



# COSTA MARE

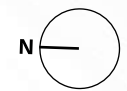
TOWER III  
FLOOR PLAN





# GROUND FLOOR TYPICAL PLAN

- 1 - Bedroom
- 2 - Bedroom
- Retail







WYNN CASINO  
VIEW

ISLAND  
VIEW

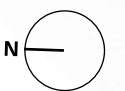
ARABIAN GULF  
VIEW



ISLAND  
VIEW

## 1<sup>st</sup>, 2<sup>nd</sup> & 3<sup>rd</sup> FLOOR TYPICAL PLAN

- Studio
- 1 - Bedroom
- 2 - Bedroom







WYNN CASINO  
VIEW

ISLAND  
VIEW

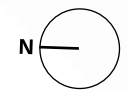
ARABIAN GULF  
VIEW



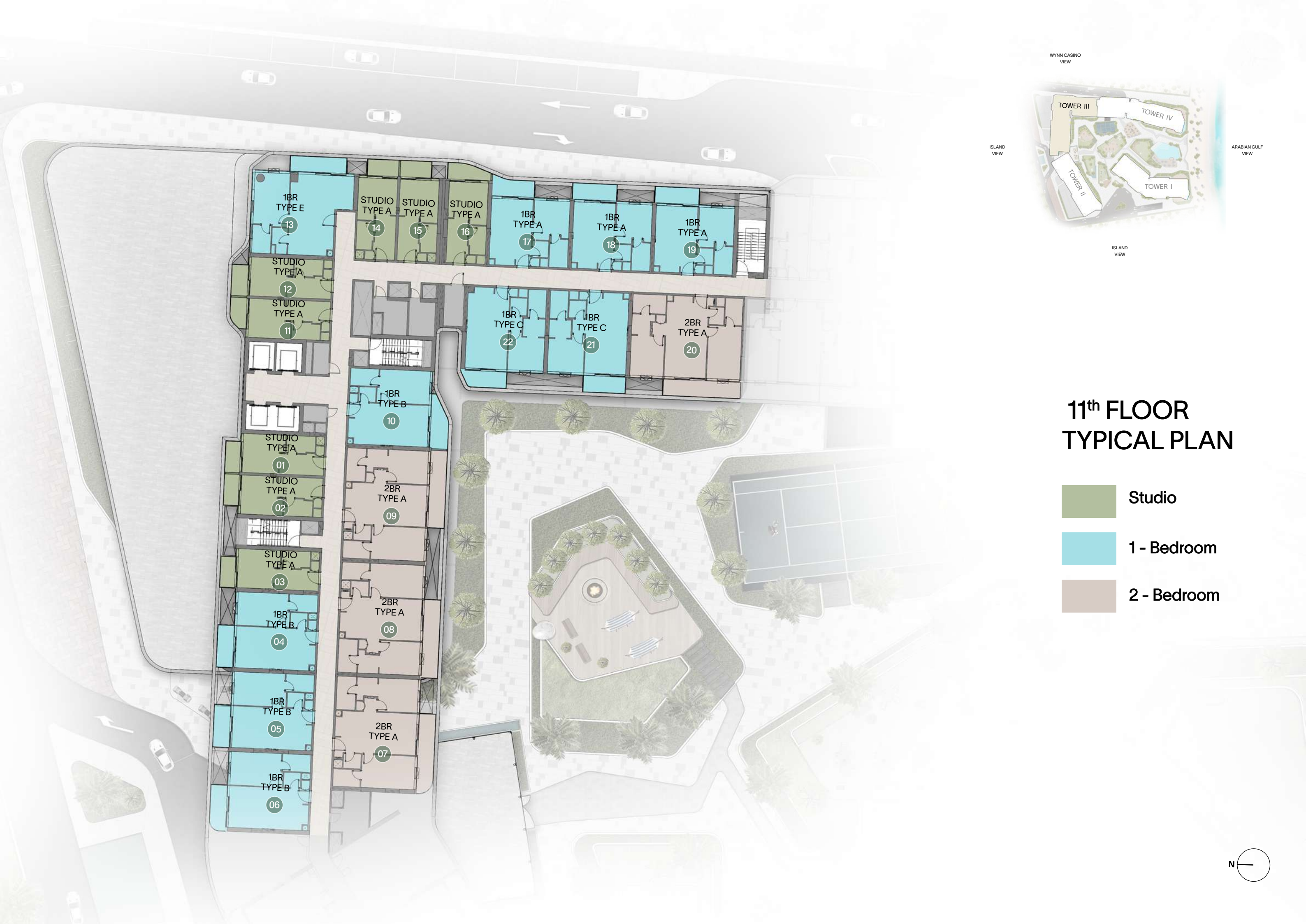
ISLAND  
VIEW

# 4<sup>th</sup> - 10<sup>th</sup> FLOOR TYPICAL PLAN

-  Studio
-  1 - Bedroom
-  2 - Bedroom







WYNN CASINO  
VIEW

ISLAND  
VIEW

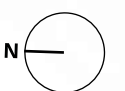
ARABIAN GULF  
VIEW



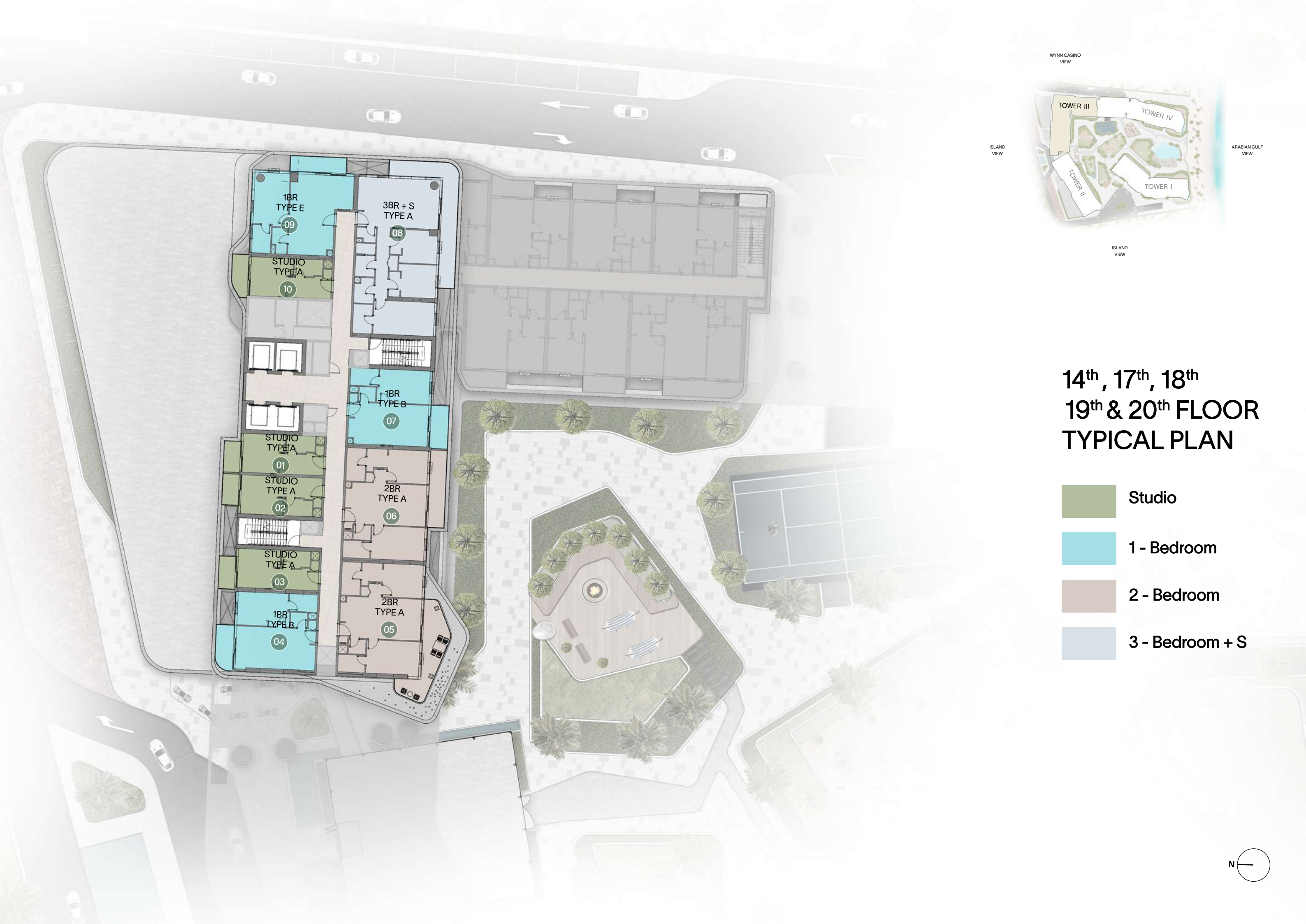
ISLAND  
VIEW

## 11<sup>th</sup> FLOOR TYPICAL PLAN

-  Studio
-  1 - Bedroom
-  2 - Bedroom

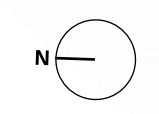






# 14<sup>th</sup>, 17<sup>th</sup>, 18<sup>th</sup> 19<sup>th</sup> & 20<sup>th</sup> FLOOR TYPICAL PLAN

- Studio
- 1 - Bedroom
- 2 - Bedroom
- 3 - Bedroom + S







WYNN CASINO  
VIEW

ISLAND  
VIEW

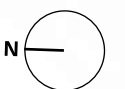
ARABIAN GULF  
VIEW



ISLAND  
VIEW

## 15<sup>th</sup> -16<sup>th</sup> FLOOR TYPICAL PLAN

-  Studio
-  1 - Bedroom
-  2 - Bedroom
-  2 - Bedroom + S



# STUDIO

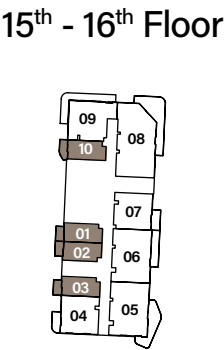
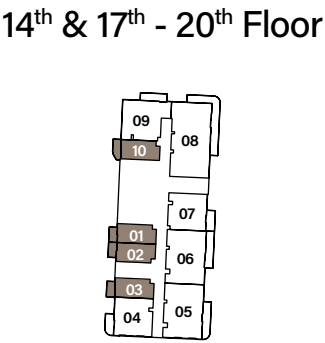
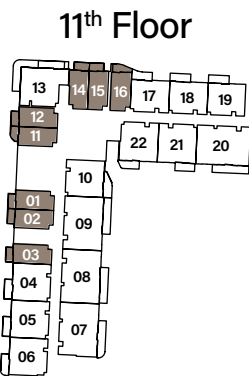
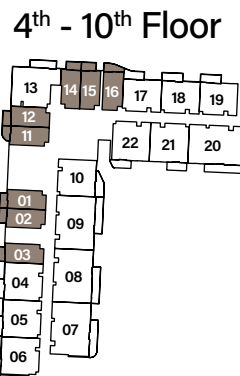
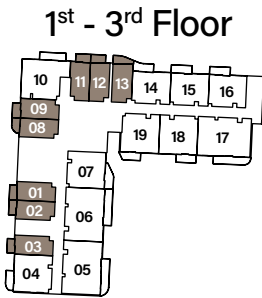
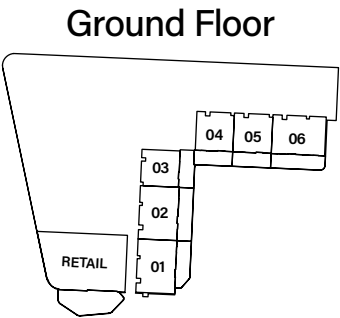
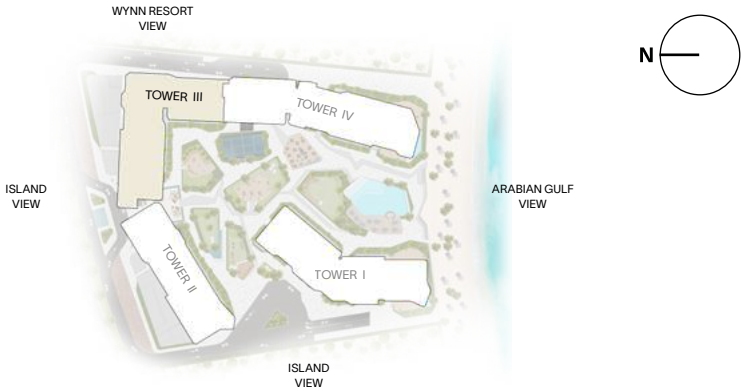
## TYPE A



Internal Living Area : **332.93 sq. ft.**

Outdoor Living Area : **53.07 sq. ft.**

Total Living Area : **385.99 sq. ft.**





# 1 - BEDROOM

## TYPE A



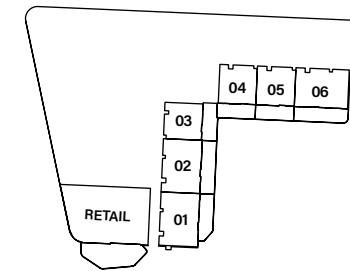
Internal Living Area : **563.60 sq. ft.**

Outdoor Living Area : **79.22 sq. ft.**

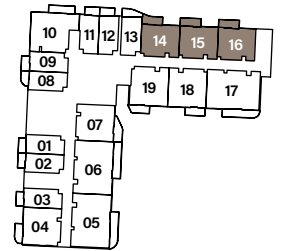
Total Living Area : **642.82 sq. ft.**



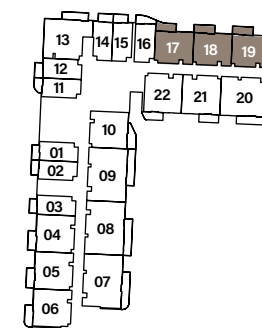
## Ground Floor



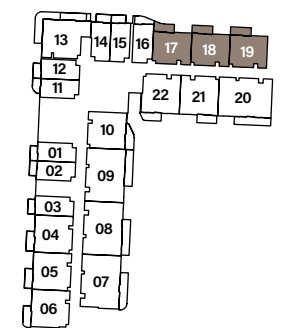
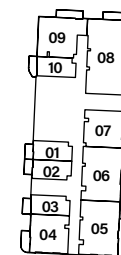
### 1<sup>st</sup> - 3<sup>rd</sup> Floor



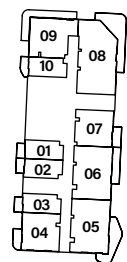
## 4<sup>th</sup> - 10<sup>th</sup> Floor



## 11<sup>th</sup> Floor

14<sup>th</sup> & 17<sup>th</sup> - 20<sup>th</sup> Floor

## 15<sup>th</sup> - 16<sup>th</sup> Floor



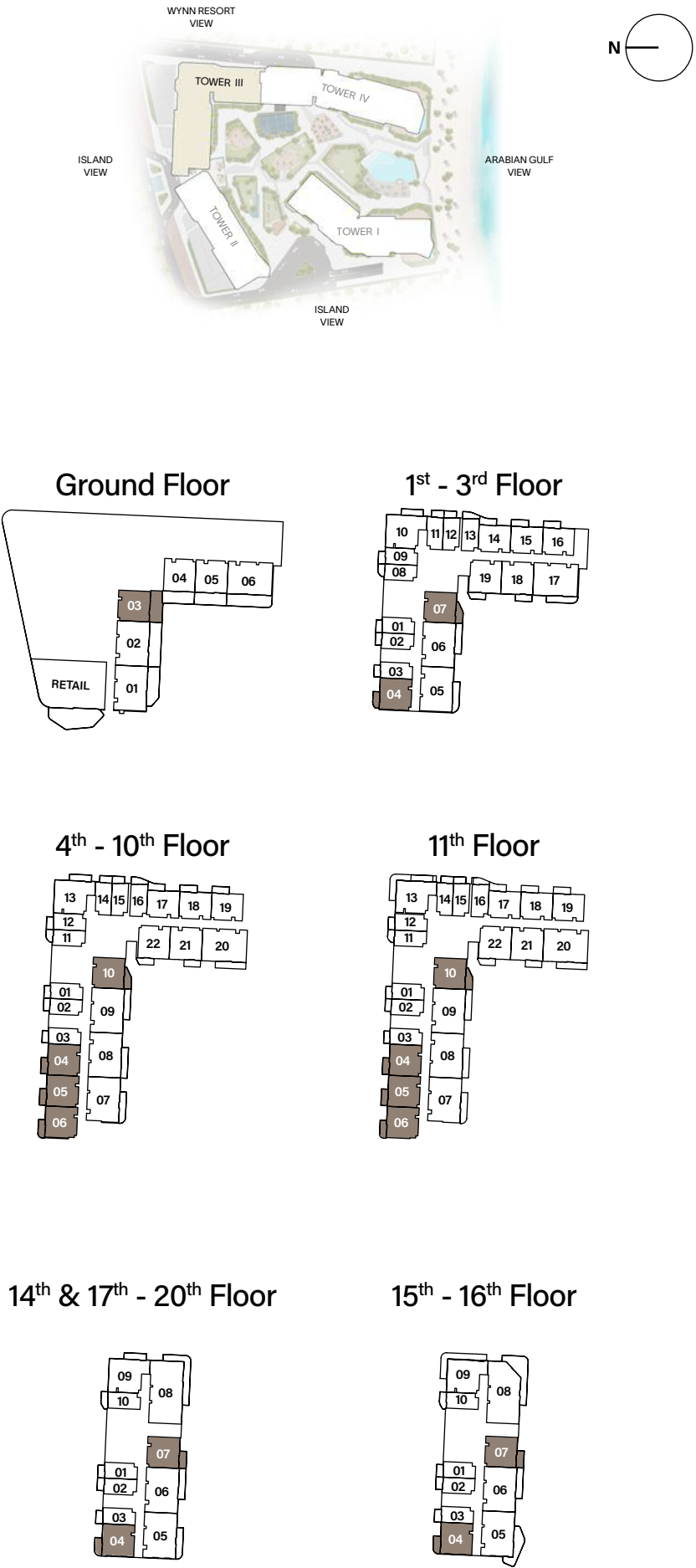


# 1 - BEDROOM

## TYPE B



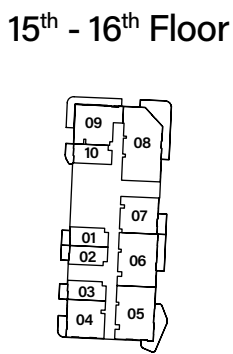
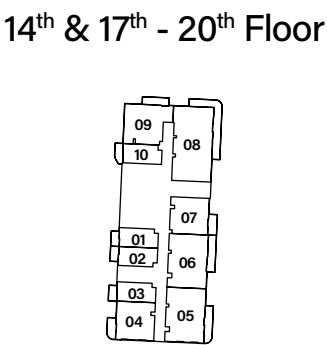
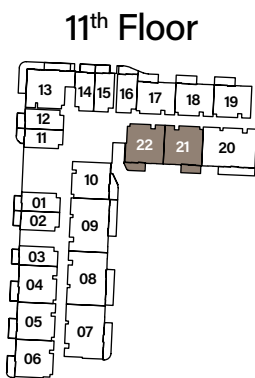
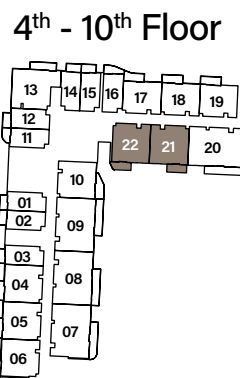
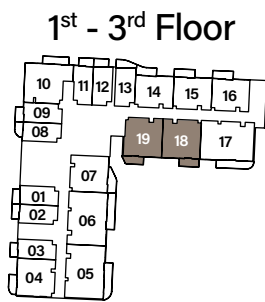
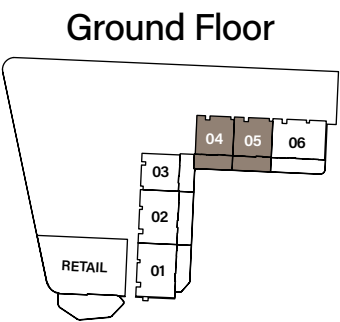
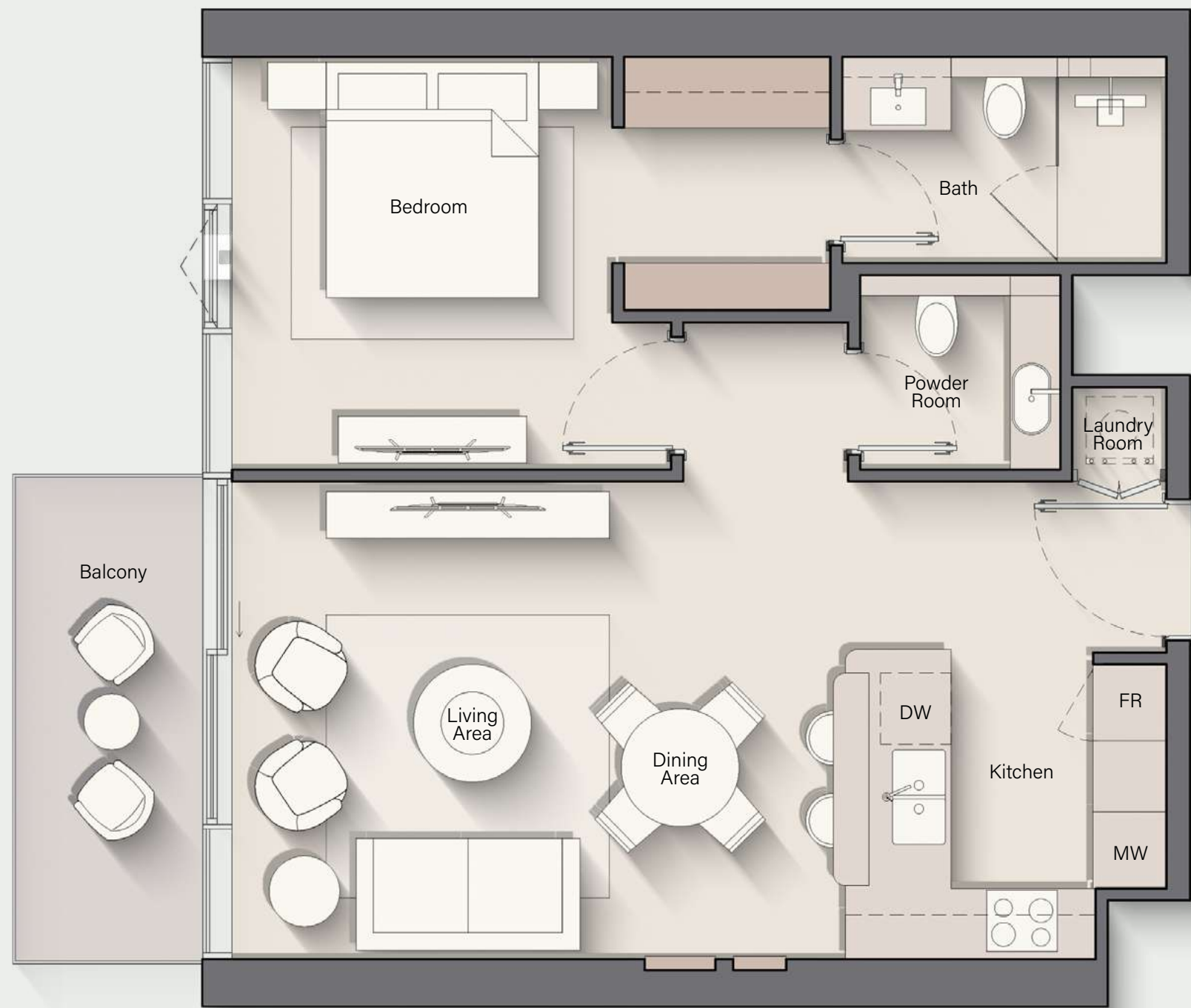
Internal Living Area : 656.17 sq. ft.      Outdoor Living Area : 75.67 sq. ft.      Total Living Area : 731.84 sq. ft.





# 1 - BEDROOM

## TYPE C



Internal Living Area : **688.35 sq. ft.**      Outdoor Living Area : **75.67 sq. ft.**      Total Living Area : **764.02 sq. ft.**

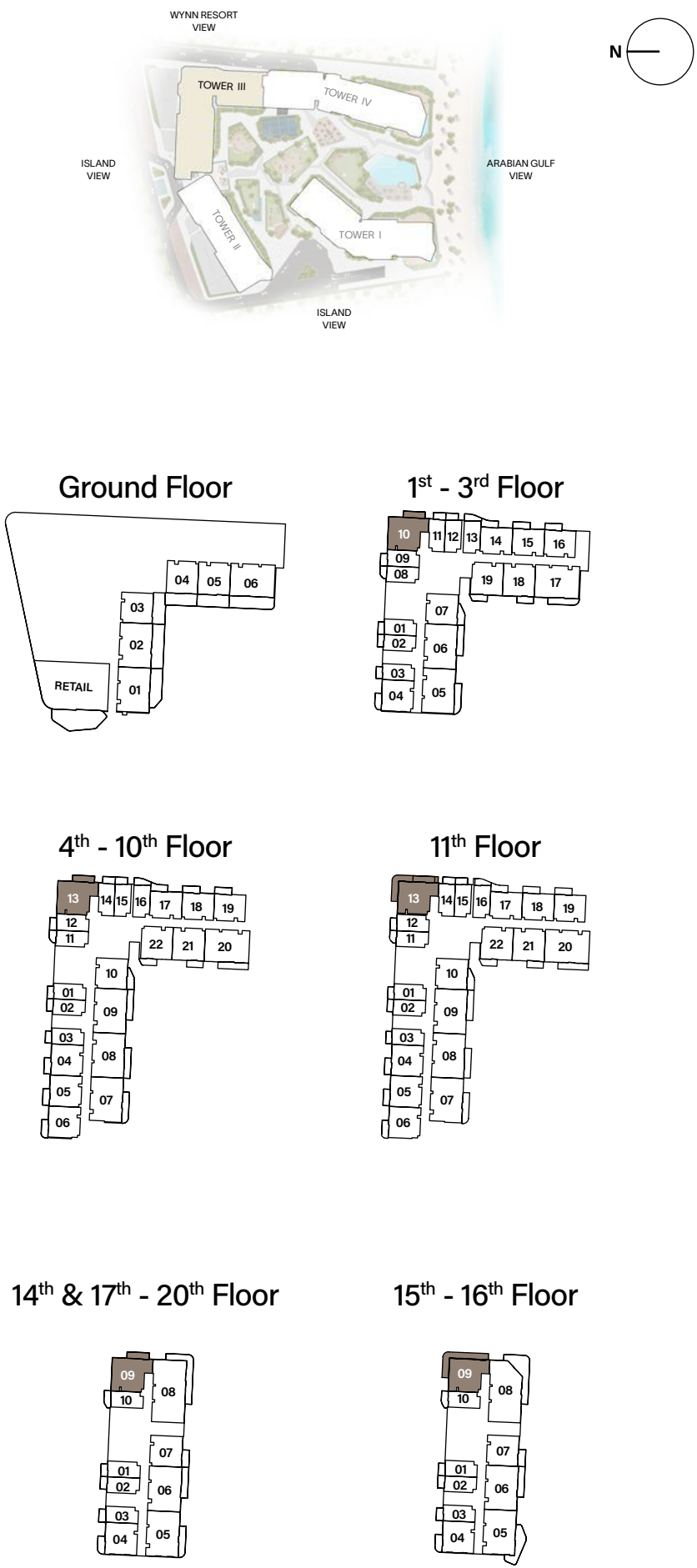


# 1 - BEDROOM

## TYPE E



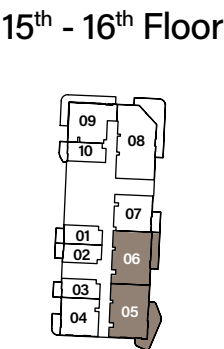
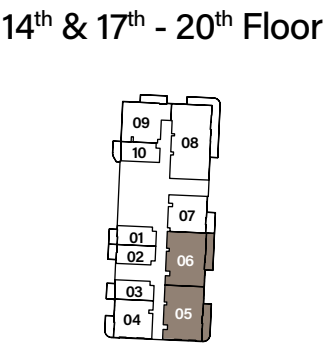
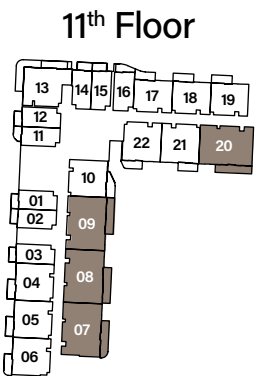
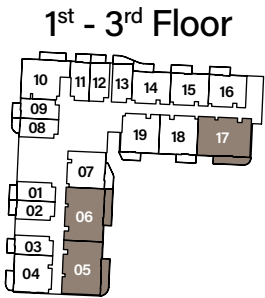
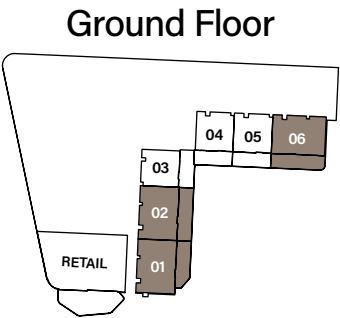
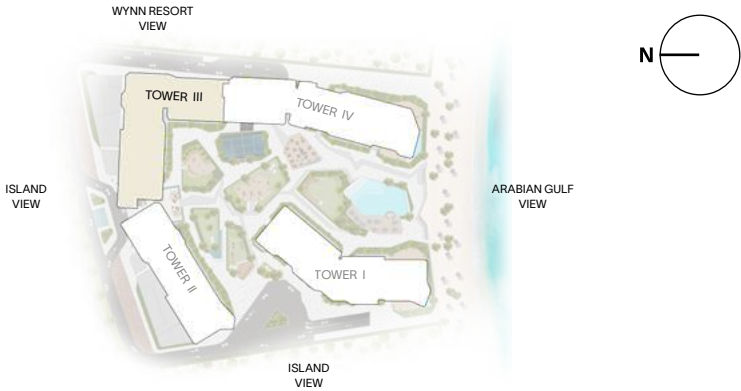
Internal Living Area : **786.95 sq. ft.**      Outdoor Living Area : **95.58 sq. ft.**      Total Living Area : **882.53 sq. ft.**





# 2 - BEDROOM

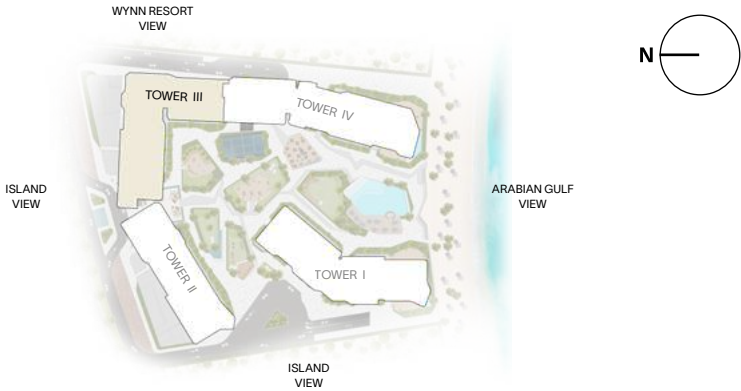
## TYPE A



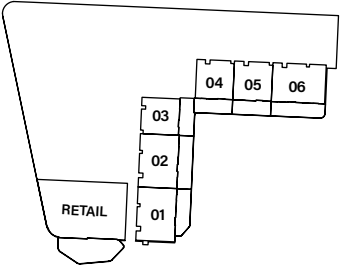


# 2 - BEDROOM + STUDY

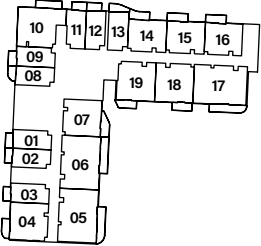
## TYPE C



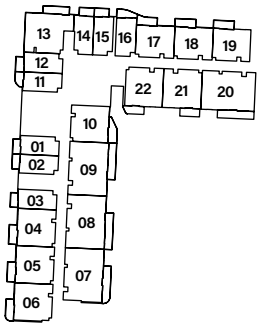
Ground Floor



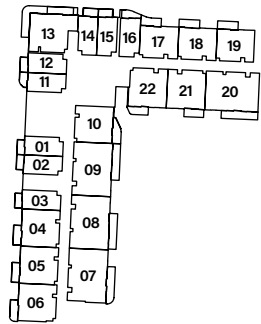
1<sup>st</sup> - 3<sup>rd</sup> Floor



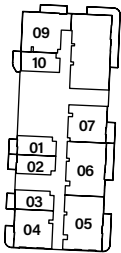
4<sup>th</sup> - 10<sup>th</sup> Floor



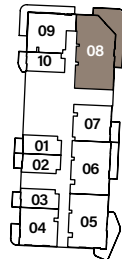
11<sup>th</sup> Floor



14<sup>th</sup> & 17<sup>th</sup> - 20<sup>th</sup> Floor



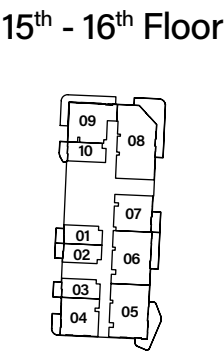
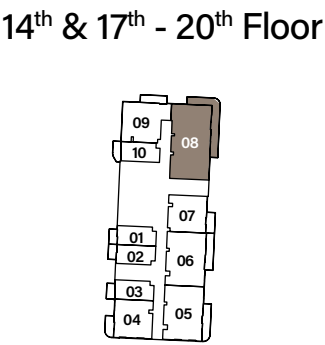
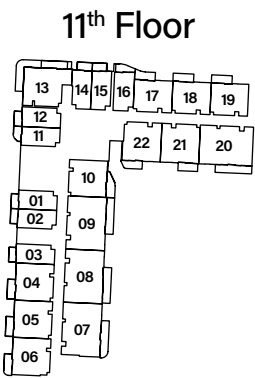
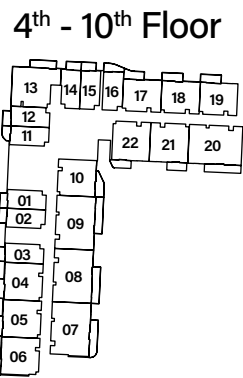
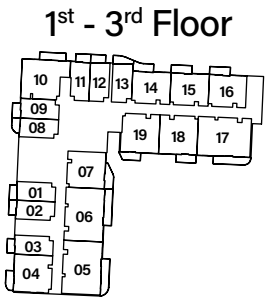
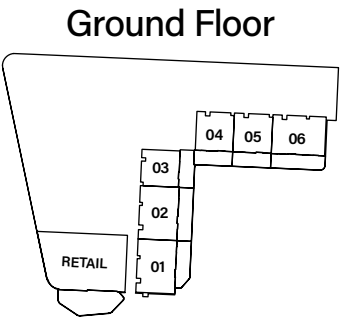
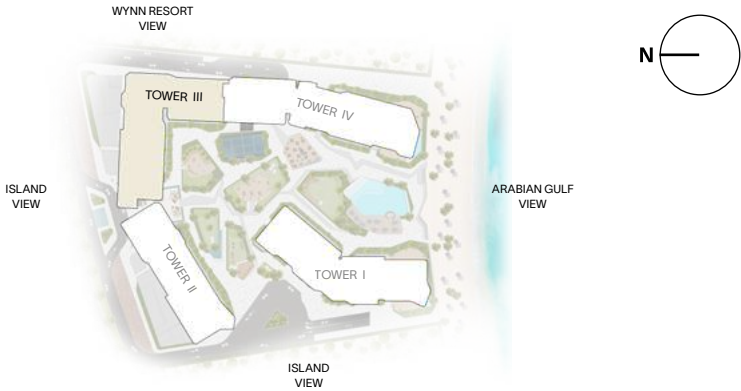
15<sup>th</sup> - 16<sup>th</sup> Floor





# 3 - BEDROOM

## TYPE A







800 8288  
info@ellingtongroup.com

ELLINGTONPROPERTIES.AE

The renderings and visualizations contained in this brochure are provided for illustrative and marketing purposes. While the information provided is believed to be accurate and reliable at the time of printing, only the information contained in the final Sales and Purchase Agreement will have any legal effect.