

# PARK GATE 2

DUBAI HILLS ESTATE

FLOOR PLANS

EMAAR



# DARK GATE 2

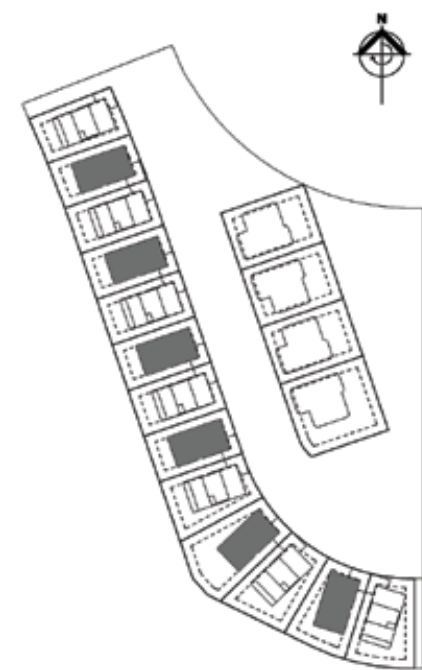
DUBAI HILLS ESTATE

## VILLA COMMUNITY DUBAI HILLS ESTATE

### 4 BEDROOM TYPE-2

UNIT	TOTAL AREA			
SUITE AREA	3583.84	SQ.FT	332.95	SQ.M
GARAGE AREA	449.39	SQ.FT	41.75	SQ.M
BALCONY/TERRACE AREA	1112.56	SQ.FT	103.36	SQ.M
TOTAL AREA	5145.79	SQ.FT	478.06	SQ.M

#### KEY PLAN



GROUND FLOOR



FIRST FLOOR



SECOND FLOOR

FLOOR PLAN 1. All dimensions are in imperial and metric, and measured from finish to finish excluding construction tolerances. 2. All materials, dimensions, and drawings are approximate only. 3. Information is subject to change without notice, at developer's absolute discretion. 4. Actual area may vary from the stated area. 5. Drawings not to scale. 6. All images used are for illustrative purposes only and do not represent the actual size, features, specifications, fittings, and furnishings. 7. The developer reserves the right to make revisions / alterations, at it's absolute discretion, without any liability whatsoever.



# DARK GATE 2

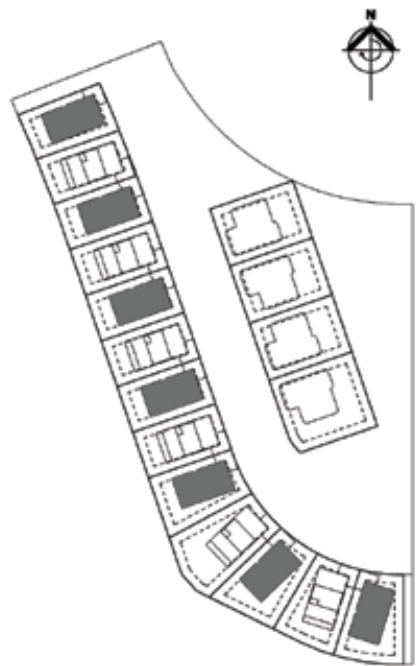
DUBAI HILLS ESTATE

## VILLA COMMUNITY DUBAI HILLS ESTATE

### 4 BEDROOM TYPE-1

UNIT	TOTAL AREA			
SUITE AREA	3583.84	SQ.FT	332.95	SQ.M
GARAGE AREA	449.39	SQ.FT	41.75	SQ.M
BALCONY/TERRACE AREA	1112.56	SQ.FT	103.36	SQ.M
TOTAL AREA	5145.79	SQ.FT	478.06	SQ.M

#### KEY PLAN



GROUND FLOOR



FIRST FLOOR



SECOND FLOOR

FLOOR PLAN 1. All dimensions are in imperial and metric, and measured from finish to finish excluding construction tolerances. 2. All materials, dimensions, and drawings are approximate only. 3. Information is subject to change without notice, at developer's absolute discretion. 4. Actual area may vary from the stated area. 5. Drawings not to scale. 6. All images used are for illustrative purposes only and do not represent the actual size, features, specifications, fittings, and furnishings. 7. The developer reserves the right to make revisions / alterations, at it's absolute discretion, without any liability whatsoever.



# DARK GATE 2

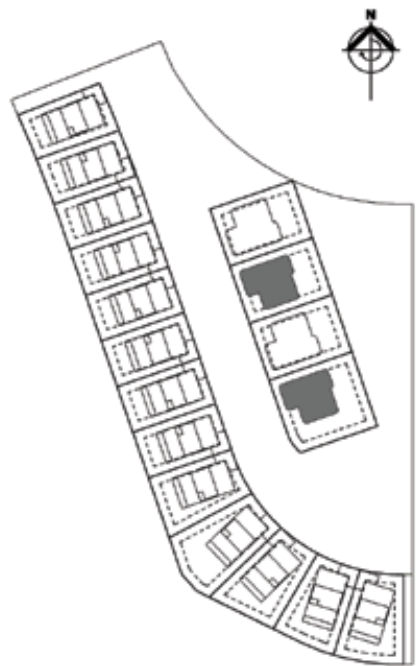
DUBAI HILLS ESTATE

## VILLA COMMUNITY DUBAI HILLS ESTATE

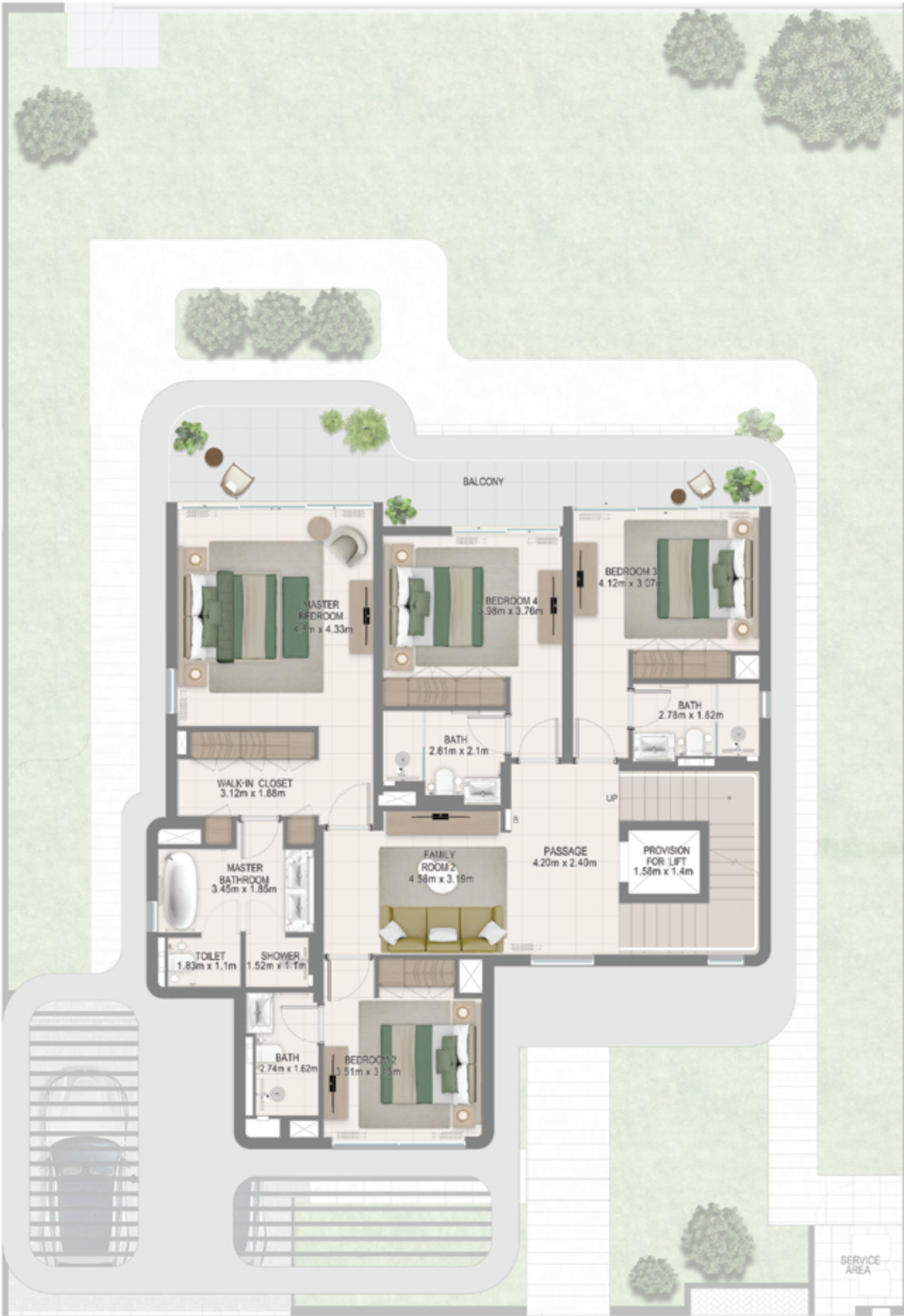
### 5 BEDROOM TYPE-4

UNIT	TOTAL AREA	
SUITE AREA	4108.37 SQ.FT	381.68 SQ.M
GARAGE AREA	486.53 SQ.FT	45.20 SQ.M
BALCONY/TERRACE AREA	796.75 SQ.FT	74.02 SQ.M
TOTAL AREA	5391.64 SQ.FT	500.90 SQ.M

#### KEY PLAN



GROUND FLOOR



FIRST FLOOR



SECOND FLOOR

FLOOR PLAN 1. All dimensions are in imperial and metric, and measured from finish to finish excluding construction tolerances. 2. All materials, dimensions, and drawings are approximate only. 3. Information is subject to change without notice, at developer's absolute discretion. 4. Actual area may vary from the stated area. 5. Drawings not to scale. 6. All images used are for illustrative purposes only and do not represent the actual size, features, specifications, fittings, and furnishings. 7. The developer reserves the right to make revisions / alterations, at it's absolute discretion, without any liability whatsoever.



# DARK GATE 2

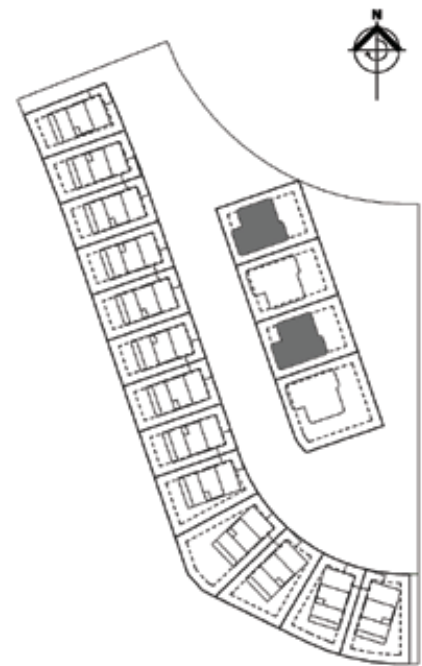
DUBAI HILLS ESTATE

## VILLA COMMUNITY DUBAI HILLS ESTATE

### 5 BEDROOM TYPE-3

UNIT	TOTAL AREA		
SUITE AREA	4108.37 SQ.FT	381.68 SQ.M	
GARAGE AREA	486.53 SQ.FT	45.20 SQ.M	
BALCONY/TERRACE AREA	796.75 SQ.FT	74.02 SQ.M	
TOTAL AREA	5391.64 SQ.FT	500.90 SQ.M	

#### KEY PLAN



GROUND FLOOR



FIRST FLOOR



SECOND FLOOR

FLOOR PLAN 1. All dimensions are in imperial and metric, and measured from finish to finish excluding construction tolerances. 2. All materials, dimensions, and drawings are approximate only. 3. Information is subject to change without notice, at developer's absolute discretion. 4. Actual area may vary from the stated area. 5. Drawings not to scale. 6. All images used are for illustrative purposes only and do not represent the actual size, features, specifications, fittings, and furnishings. 7. The developer reserves the right to make revisions / alterations, at it's absolute discretion, without any liability whatsoever.