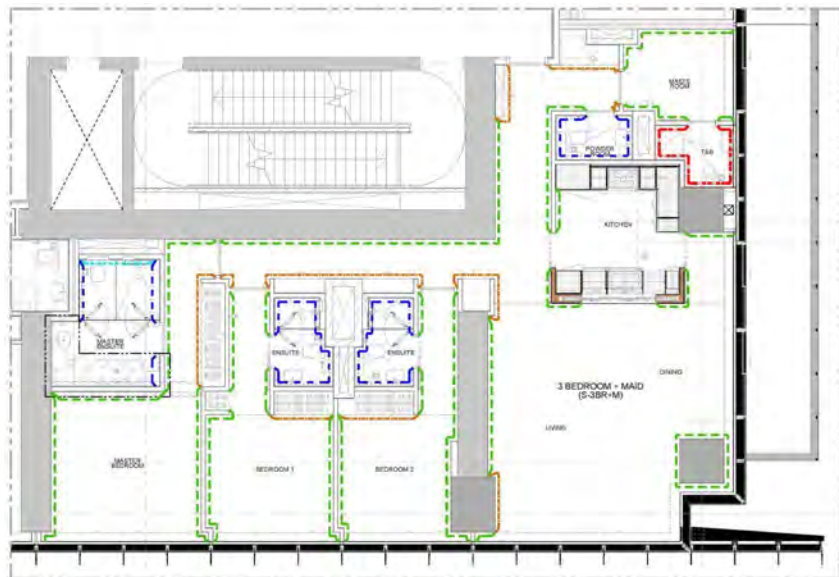


ONE ZA'ABEEL

THE RESIDENCES

SIMPLEX APARTMENT
FINISHES

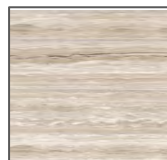
Simplex Apartment- 3BR+M Hard Finishes Reference (Wall)



Wall Paint
PT-02
Jutone/
NCS S 1005 Y50R



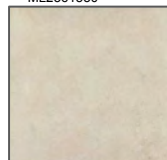
Ceiling Paint
PT-03
Jutone/
S 0300- N



Backsplash Tile
TL-06
GranitiFiandre/
Travertino Maximum
ML2361530



Bathroom Wall Tile
TL-07
GranitiFiandre/ Calacatta
Statuario



Maids bathroom
Wall Tile
TL-08
Marazzi Group /
R3RZ Season Beige
R38 MQ



Feature Wall Tile
TL-05
GranitiFiandre

LEGEND:		
	PT-02	GENERAL PAINT FINISH WITH TL-03 SKIRTING FINISH
	WD-09	WOOD VENEER FINISH
	WD-08	WOOD VENEER FINISH
	PL-01	PLASTIC LAMINATE FINISH @ MASTER ENSUITES
	TL-05	FEATURE TILE FINISH @ MASTER ENSUITES
	TL-07	GENERAL TILE FINISH @ ENSUITES & POWDER ROOMS
	TL-08	PORCELAIN TILE FINISH @ MAID'S T&B
REFER TO DWG NO. Q231317-ZL0110-DWG-TB-ZZ-ID-05036 FOR TYPICAL WALL FINISHES DETAILS.		
REFER TO DWG NO. Q231317-ZL0110-DWG-TB-ZZ-ID-04001 TO 04089 FOR WARDROBE / STORAGE / DB & MODULE TYPES		
REFER TO DWG NO. Q231317-ZL0110-DWG-TB-ZZ-ID-07001 TO 07020 FOR KITCHEN DETAILS.		
REFER TO DWG NO. Q231317-ZL0110-DWG-TB-ZZ-ID-05033 FOR TYPICAL WALL TERMINATION DETAILS.		
GENERAL NOTE:		
1. WALL FINISHES PLANS TO BE READ IN CONJUNCTION WITH KITCHEN, WARDROBE JOINERY & WALL TERMINATION DETAILS.		
2. WALL FINISHES PLANS TO BE READ IN CONJUNCTION WITH TYPICAL WALL FINISHES DETAILS.		
3. WALL FINISHES PLANS TO BE READ IN CONJUNCTION WITH SPECIFICATIONS & HARD FINISHES SCHEDULES.		

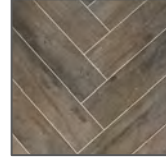
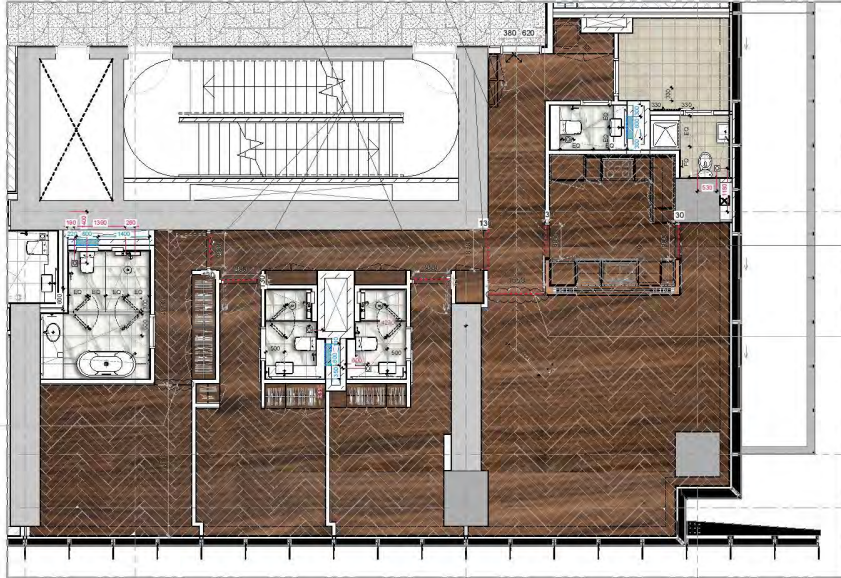


Skirting Tile
TL- 03
Taf House Material
/Walnut Woodland



Skirting Trim
MT-04
Custom Made

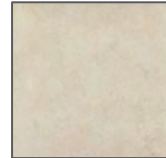
Simplex Apartment- 3BR+M Hard Finishes Reference (Floor)



Flooring Tile
TL-02
Taf House Material
Walnut



Bathroom Flooring Tile
TL-16 GranitiFiandre/
Calacatta Statuario



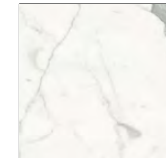
Maids Room & Bathroom Flooring
Tile
TL-08
Marazzigroup/
R3RZ Season Beige R38 MQ



Main Entrance Door
Threshold
ST-01
Grey Ecuador.

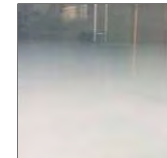


Bathroom Shower
Threshold and Ledge Top and
Niches Frame
ST-08Compac/Glacier



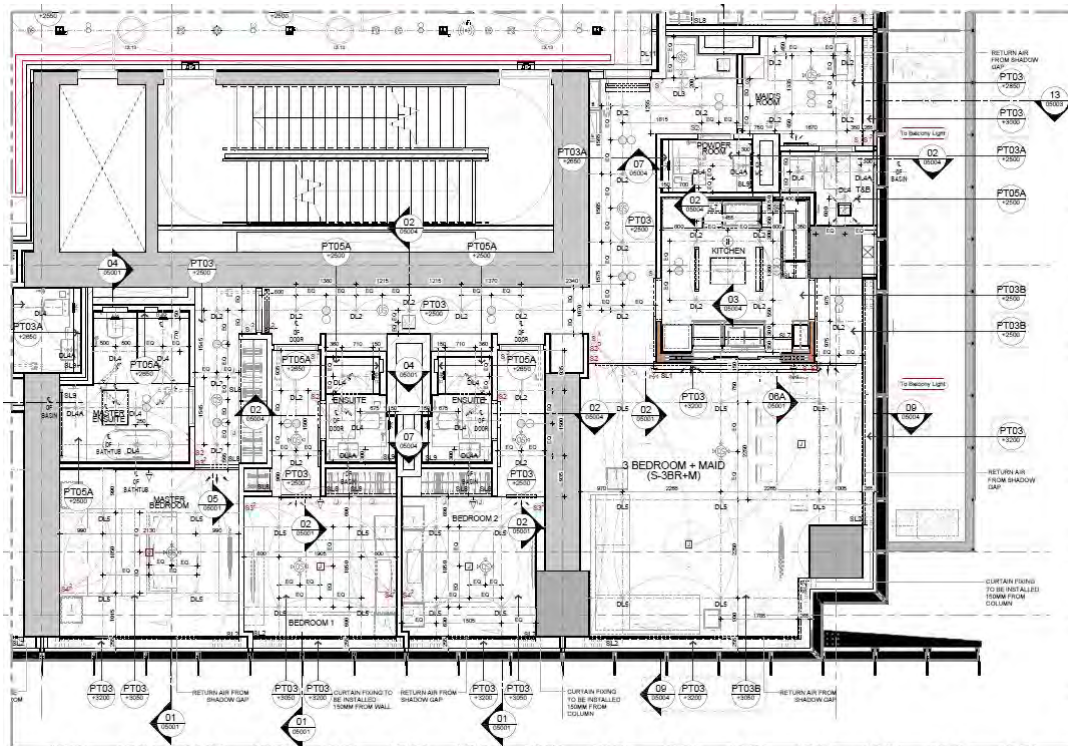
Bathroom Shower
Flooring Tile
TL-18
GranitiFiandre/ Calacatta
Statuario Honed

LEGEND:	
TL-03	PORCELAIN TILE FINISH @ APARTMENTS
TL-07	GENERAL TILE FINISH @ CORRIDORS & LIFT LOBBY
TL-08	PORCELAIN TILE FINISH @ MAID'S T&B
TL-16	GENERAL TILE FINISH @ ENSUITES
TL-17	GENERAL TILE FINISH @ POWDER ROOMS
TL-18	GENERAL TILE FINISH @ SHOWER ENCLOSURES / AREAS
REFER TO DWG NO. OZ31317-ZL0110-DWG-TB-ZZ-ID-05005 FOR TYPICAL FLOOR DETAILS.	
GENERAL NOTE:	
1. FLOORING LAYOUTS TO BE READ IN CONJUNCTION WITH SPECIFICATIONS & HARD FINISHES SCHEDULES	



Shower Partitions
10 mm Gradient Low
Iron Glass
Custom Made

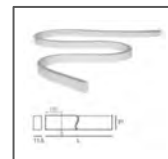
Simplex Apartment- 3BR+M Lighting and Wire Accessories Reference



Plus Pinhole Fixed Trim
Downlight-IP 20
DL 02
Huda Lighting



Recessed Ø44mm.
aperture adjustable LED
MR16 downlight-IP 44
DL 3
Huda Lighting



Surface mounted linear
strip light at mirror detail-
80391 Rubber, 10W/m
Led, 2700K, IP67, On/Off
+ 99549 channel / i-LED
/SL09



Wire Accessories



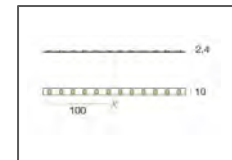
Plus Pinhole Fixed Trim
Downlight-IP44
DL 04
Huda Lighting



Recessed Ø44mm.
aperture adjustable LED
MR16 downlight-IP20t
DL 04A
Huda Lighting



Plus Pinhole Fixed Trim
Downlight-IP20
DL 05
Huda Lighting



Surface mounted linear LED
cove light L65826,
14.4 W/m Led, 2700K,
IP20, On /Off/ Froled Lighting
SL 01

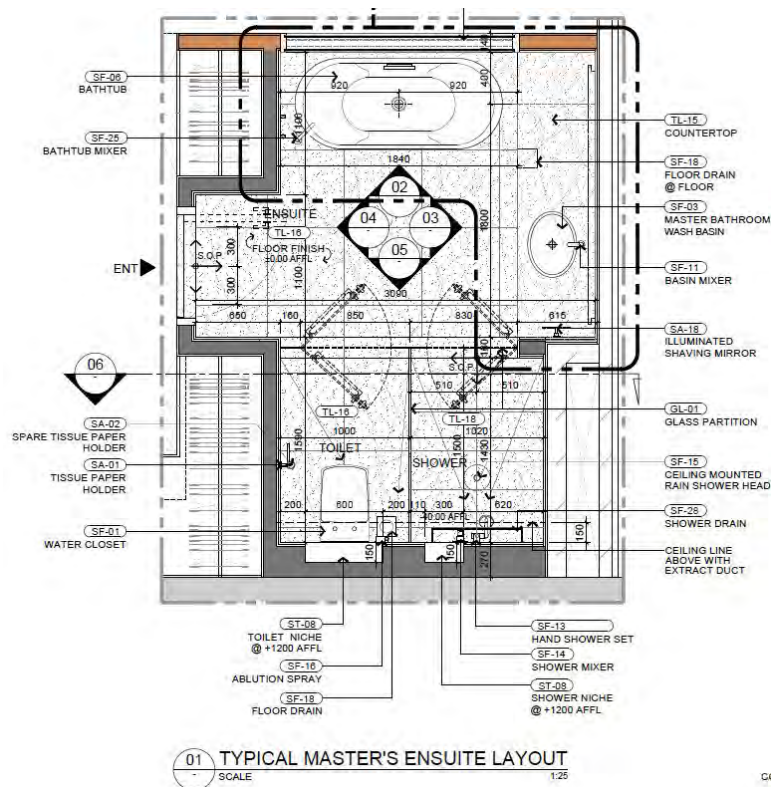


Surface mounted linear LED
curtain grazing light L65826,
14.4 W/m Led, 2700K,
IP20, Non Dimming +Aluminium
channel/ Froled Lighting /SL0 2



Surface mounted linear LED
under cabinet task light-IL65826,
14.4 W/m Led, 2700K,
IP20, Non Dimming +Aluminium
channel/ Froled Lighting/SL0 7

Simplex Apartment- 3BR+M Master Ensuite Sanitary Reference



Shower Rail Set
SF-13
Grohe Plus/
27232001



Basin Mixer
SF-11
Grohe Plus/
32618003



Flush Plate
SF-01.2
Geberit



Water Closet
SF-01
Kohler/ Modern
Life



Bathtub
SF-06
Kaldewei/
model 1112



Mirror
SA-18
Comfort 2000



Lever Bath Mixer
SF-25
Grohe Plus/
23846003



Shower Set
Mixer
SF-14
Grohe Plus/
24060003



Over Counter
Wash Basin
SF-03
Kohler/99183
vox



Paper Holder
SA-01
Grohe



Robe Hook
SA-03
Grohe



SF-28
Evi Metal/
Linear Drain



Trigger Spray
SF-16
Grohe Plus/
26354000



Head Shower
SF-15
Grohe Plus/
26559000



Spare Paper
Holder
SA-02
Grohe Plus



Towel Rail
SA-04
Hafele

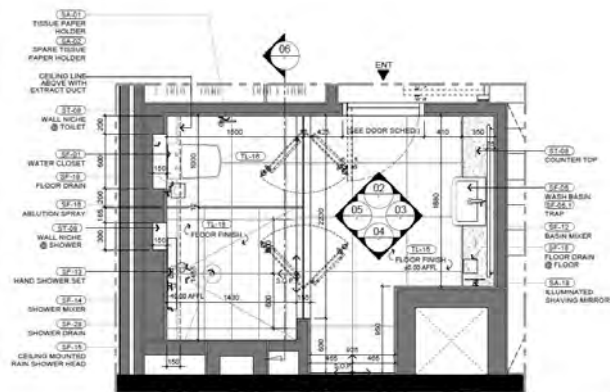


WC Set
SF-01
Geberit/ Omega 30
ABS

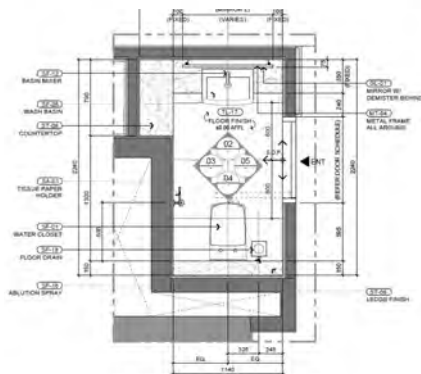


SF-18
Custom Made/
Square Drain

Simplex Apartment- 3BR+M Secondary Ensuite and Powder Room Sanitary Reference



01 TYPICAL SECONDARY ENSUITE LAYOUT
SCALE 1/32



01 TYPICAL POWDER ROOM LAYOUT
SCALE 1/32



Shower Rail Set
SF-13
Grohe Plus/
27232001



Basin Mixer
SF-11
Grohe Plus/
32612003



Flush Plate
SF-01.2
Geberit



Water Closet
SF-01
Kohler/ Modern
Life



Mirror
SA-18
Comfort 2000



Shower Set Mixer
SF-14
Grohe Plus/ 24060003



Over Counter
Wash Basin
SF-05
Kohler/Karess
Semi-recessed



Paper Holder
SA-01
Grohe



Robe Hook
SA-03
Grohe



SF-28
Evi Metal/
Linear Drain



Trigger Spray
SF-16
Grohe Plus/
26354000



Head Shower
SF-15
Grohe Plus/
26559000



Spare Paper
Holder
SA-02
Grohe Plus



Towel Rail
SA-04
Hafele

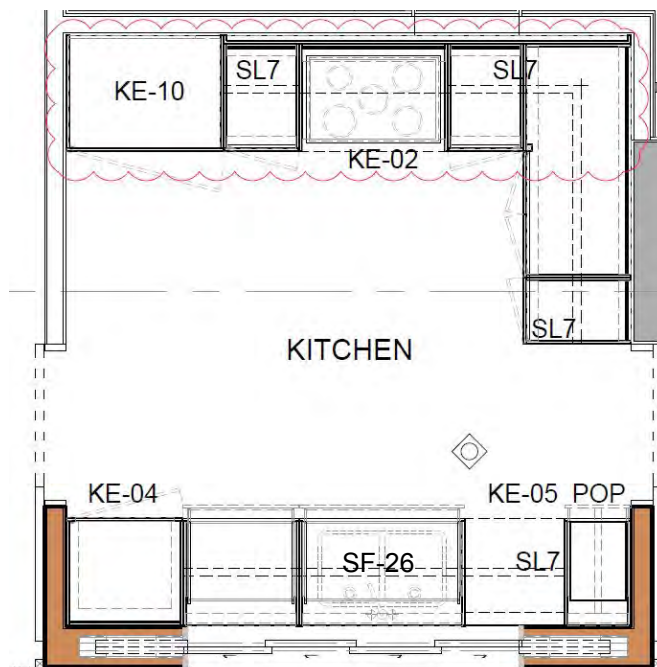


WC Set
SF-01
Geberit/ Omega 30
ABS



SF-18
Custom Made /
Square Drain

Simplex Apartment- 3BR+M Kitchen White Good and Sanitary Reference



Built in Fridge
KE-10
iQ700-CI36TP02
Siemens



Built in Dishwasher
KE-05
iQ300-SN66D010GC
Siemens



Built in Oven-90cm
KE 02.1
VB554CCR0, Black
Siemens



Automatic Washer Dryer
KE 06
iQ500-WD15G460GC
Siemens (in Laundry)



Single lever sink mixer
1/2"
SF-27
32 168 000 Minta
Grohe



Telescopic Cooker
Hood-90cm
KE-02.2
iQ100-LI93TCA10M
Siemens



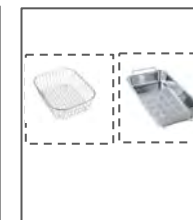
Coking Zone
Ceramic-90cm
KE-02
iQ700-EX975LXC1E
Siemens



Compact oven with
microwave
KE-02
iQ700-CM633GBS1M
Siemens



Kitchen Sink
SF-26
KUBUS-KBX
120-34-34
Franke

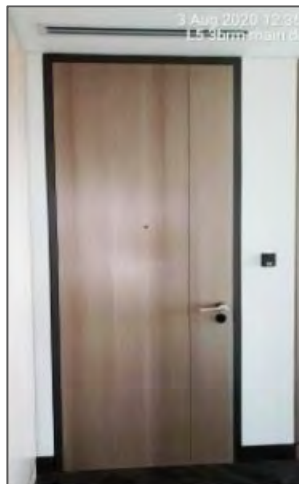


Kitchen Sink
Accessories
SF-26.1-ACCESSORY
Y SINKS - DB448
SF-26.2-ACCESSORY
Y SINKS - ST123
Franke

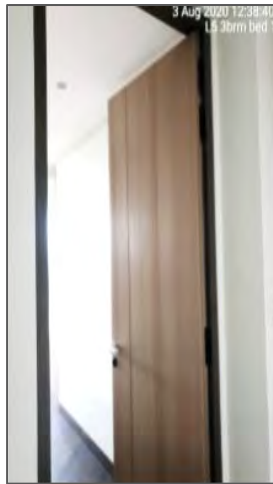
Simplex Apartment- 3BR+M Doors & Ironmongery Reference



Kitchen Sliding Door



Entrance Door

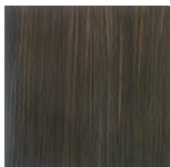


Bedroom/ Bathroom Door

Door Finishes



Door Shutter
WD 09
Natural White Veneer
Model:ES - A126A
Tabu



Door Frame
WD 08
Reconstituted Veneer WJ21
Chabros

Doors Hardwares- Internal Doors (Dark Umber-Match with MT-04)



Door Hinges
TE 240 3D
Hafele



Mortise lock
profile cylinder
911.02.145X
Hafele



Profile
thumbturn
916.81.119X-N
MK/Hafele



Custom made
Lever handle
902.92.M9CX
(Wet area side to be
without Ledder)
-Dark Umber-
Hafele



Mortise lock,
bathroom/
911.02.149X
Hafele



Door Stopper (
all doors)
937.52.080x
Hafele

Kitchen (with Sliding Door)



Sliding Door
Fitting
94080004
Hafele



Recessed Handle
PA-25-4Q4Q1800
Kawajun



Edge Pull
PC-423-4Q
Kawajun



Soft Move
94080046
Hafele

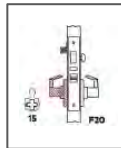


Track Buffer
94080040
Hafele

Entrance Door



Hinge
Simonwerk / dark
umber
TECTUS TE 527 3D



Latch Bolt
Dormakaba
DL 1953
Dark Umber



Door Lever Handle
FSH
K1983
Dark Umber



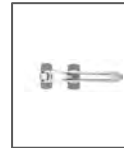
Concealed
Door Closer
Dormakaba
ITS96/Dark Umber



Auto Door
Bottom
Kilargo
ITS96



Door View
Trimco
975U

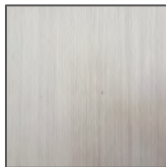


Door Guard
D&E Security
Door Restrictor

Simplex Apartment- 3BR+M Kitchen Joinery and Ironmongery Reference



Kitchen Finishes



Kitchen Cabinet Shutter
WD 09
Natural White Veneer
Model: ES - A126A
Tabu



Wardrobe Shelves, drawer,
Inner Panels PL-02
Melamine MDF
PF8045MF/ Kallegra Building
Material



Kitchen Lower Cabinet
PT-04
Lacquer Finish
Hesse Signal/DEPA
Glossy / RAL 9002



Surface mounted linear LED under
cabinet task light-IL65826,
14.4 W/m Led, 2700K,
IP20, Non Dimming +Aluminium
channel/ Proled Lighting/SL0 7

Kitchen Ironmongery



Hinge (nickel plated)
Hafele 329.15.701 Full
overlay & 329.15.705 Inset
Soft close hinge



Hafele Soft close
Concealed/undermount
drawer runner
433.03.106



Hafele 329.11.705
Blind corner hinge
Soft Close
Nickel plated



Hafele 329.29.317
Soft close 155
Degree hinge
Nickel plated



Hafele 513.07.905
Drawer runner system
with side railing
& 513.04.906 Sink
Pull out Drawer runner
system
- Metallic silver



EKU Clipo 16
Telescopic Sliding
window
for 4 Panels (2+2)
Kitchen



Hafele Corner
Cabinet
Pull out
shelving units



Hafele 372.38.553
Double Flap Lift up
fitting 90 degree
- soft close



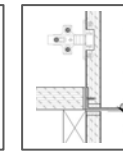
Hafele 372.27.502
Free Space fitting 90 Degree
- Soft close



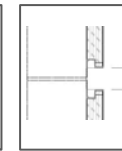
Hafele 546.59.923
Degrearder unit pull out
fitting (1600 - 2000MM) 6
nos. Hookin Shelves



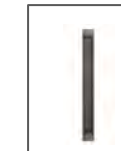
Custom Made Handle
For lower cabinets
MT-04 Finish



Custom Made Handle
For Higher Cabinets
MT-04 Finish



Custom Made Handle
For Pull Out fitting
MT-04 Finish

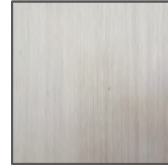


Recessed Handle
For Sliding
Window/Kawajun

Simplex Apartment- 3BR+M Joinery and Ironmongery Reference



Wardrobe Finishes



Wardrobe Shutter
WD 09
Natural White Veneer



Wardrobe Shelves,
drawer, Inner Panels
PL-03
Melamine MDF
Matching With PL-03

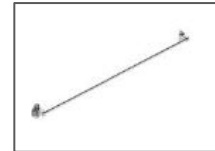
Wardrobe Ironmongery



Hettich wardrobe rail
Hafele 801.10.274 Wardrobe rail
Chrome



Drawer runner
Hafele soft close ball bearing
drawer
runner 450mm - 432.20.854



Hettich Tie rack
Hafele 807.20.743



Hafele Slido Classic
80 VF V Sliding
System
for Wardrobe Soft
close- 406.80.026



Adjustable feet
Hafele Plinth Adjusting feet
637.17.303
with clip 637.45.906



Adjustable shelf support
Hafele Shelf Support 282.01.701
+ Sleeve
282.50.704



Hinge(nickel plated)
Hafele 329.15.701 Full
overlay & 329.15.705
Inset Soft close hinge



Strip Light for Wardrobes
L65526, 14.4 W/m Led, 2700K,
IP20, Non Dimming +Aluminium
channel / Proled Lighting /SF-08

Simplex Apartment- 3BR+M Bathroom Joinery and Ironmongery Reference



Vanity Finishes



Shutters & Side Panel
PL-01
Laminate / Alpi



Joinery Inside
PL-01 Melamine MDF



Counter
TL-15 GranitiFiandre/
Calacatta Statuario



Mirror
GL-03 Low Iron mirror

Vanity Cabinet Ironmongery

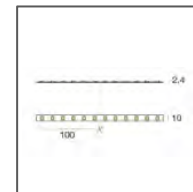


Hinge(nickel plated)
Hafele 329.15.701 Full
overlay & 329.15.705 Inset
Soft close hinge



Hafele Soft close
Concealed/undermount
drawer runner
433.03.106

Vanity Cabinet Lighting



Surface mounted linear strip light
at mirror detail- 80391 Rubber,
10W/m
Led, 2700K, IP67, On/Off +
99549 channel / i-LED /SL09

DISCLAIMER

While One Zaabeel LLC ("the Company") endeavors to ensure that the information provided in this brochure of the One Za'abeel Project is correct, you acknowledge and agree that the information and materials contained in this brochure, and the terms, conditions, and descriptions that appear, are subject to change in the absolute discretion of the Company. Not all brands, products, services and/or access rights that may be described in this brochure may be available at all times or in all areas.

Your eligibility for particular products, services and/or access rights to any of the facilities (including without limitation pools and gymnasiums) at the One Za'abeel Project is subject to the final determination and acceptance of the Company and/or the Hotel operator (Kerzner International Limited), and any agreement with the Company and/or the Hotel operator (Kerzner International Limited) will be subject only to a written agreement evidencing such.

The information and materials contained herein, including text, graphics, links or other items - are provided on an "as is" and "as available" basis. As such, the Company does not warrant the accuracy, adequacy or completeness of the information and materials and expressly disclaims liability for any errors or omissions that may appear herein. Nothing in this brochure constitutes, is intended to constitute, shall be treated as constituting or shall be deemed to constitute, the Company giving any warranties of any kind, implied, express or statutory, (including but not limited to the warranties of non-infringement of third party rights, title, merchantability, fitness for a particular purpose and where relevant, freedom from computer virus), in conjunction with the information and materials in this brochure and the One Za'abeel Project generally.

To the extent permitted by UAE law, the Company excludes all representations and warranties (whether express or implied by law) in respect of this brochure and the One Za'abeel Project generally. The Company will not be liable to you under any circumstances for any actual, direct, indirect, consequential, economic or special loss or damage howsoever arising in relation to the information and materials contained in this brochure. You release the Company from all claims (whether actual or contingent, whether in the United Arab Emirates or elsewhere) that you may have from time to time against the Company arising from this brochure.

ONE ZA'ABEEL

THE RESIDENCES

04 517 7303

SALES@ONEZAABEEL.COM

WWW.ONEZAABEEL.COM