

SOUL E/VER



morning. We were lying on
in that nook where sunlight
you, seeing me, noticing
as the sunlight trapped
treasure, like a precious
we could turn back the
whisper in our ears? No

imperfect

Smoo

inde

take

the

asf

sky

und

of our

sunrises.

Becomi

by step, l

quiet and

house like

FACT
SHEET

BEYOND

Welcome To the

INTRODUCTION



*Soulever brings together the exhilaration
of Dubai with the tranquility of luxury
waterfront living.*

These exclusive beachside residences stand together on
Dubai Maritime City's modern peninsula, offering twin
perspectives of both the city's ever-changing skyline
and the sparkling sea beyond. Where every detail is
designed, considered and made with love.



Family





MAP

SOULEVER

A DEEP CONNECTION

Everything you want and everyone you need within easy reach.

Dubai International Airport – 20 minutes

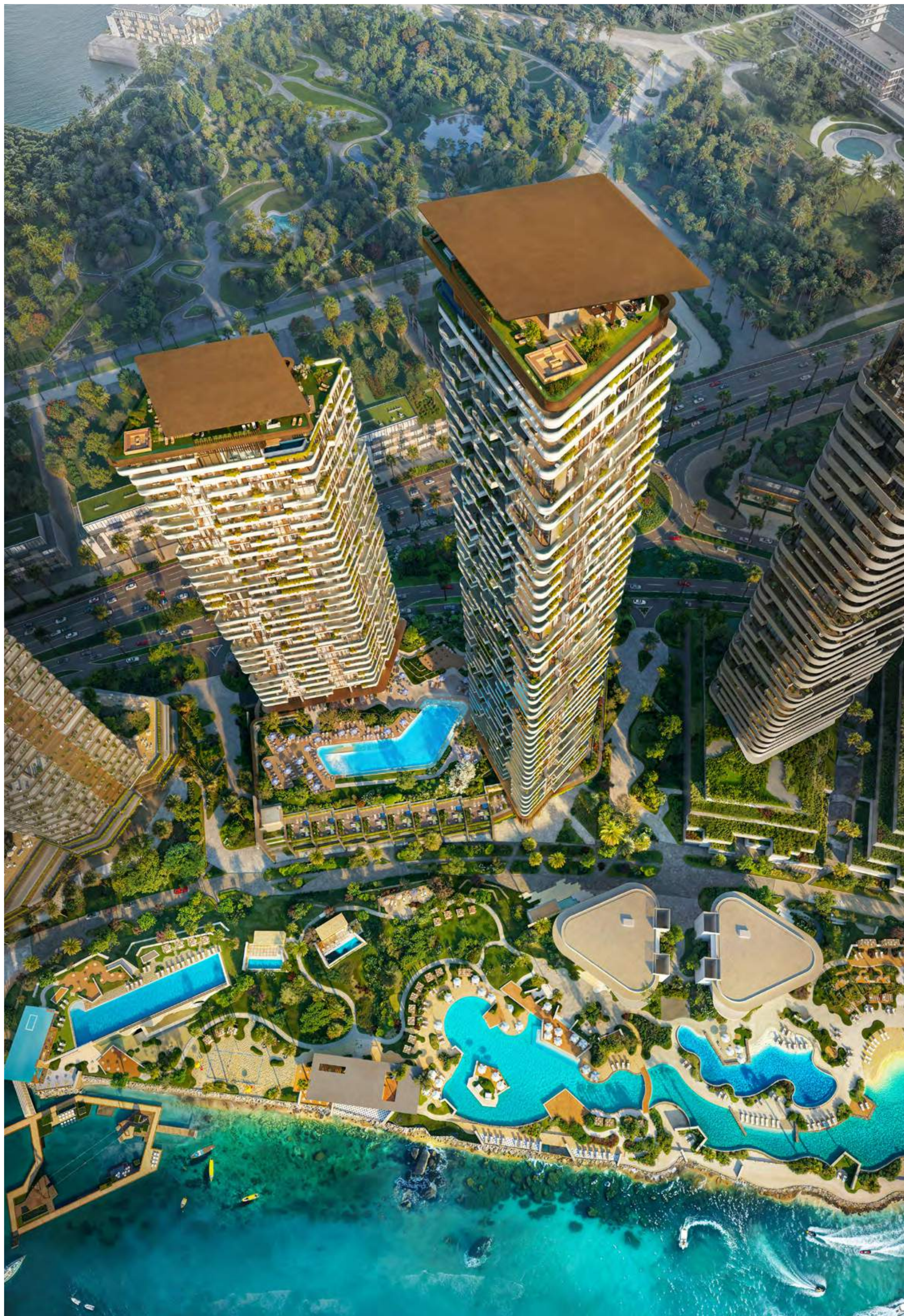
Mina Rashid – 5 minutes

Downtown /Burj Khalifa – 15 minutes

DIFC – 20 minutes

The Gold Souk – 15 minutes

Jumeirah Beach Coast – 10 minutes



THE COVE

SKYLINE TO SHORE

A dynamic waterfront community, Soulever offers sweeping 360-degree vistas of the Forest, the Cove and the Dubai skyline. It is a place where the energy of the city seamlessly blends with the calm of coastal living.





LIFESTYLE

WHERE COASTAL CALM EMBRACES URBAN PULSE

Cherish having the best of both worlds.

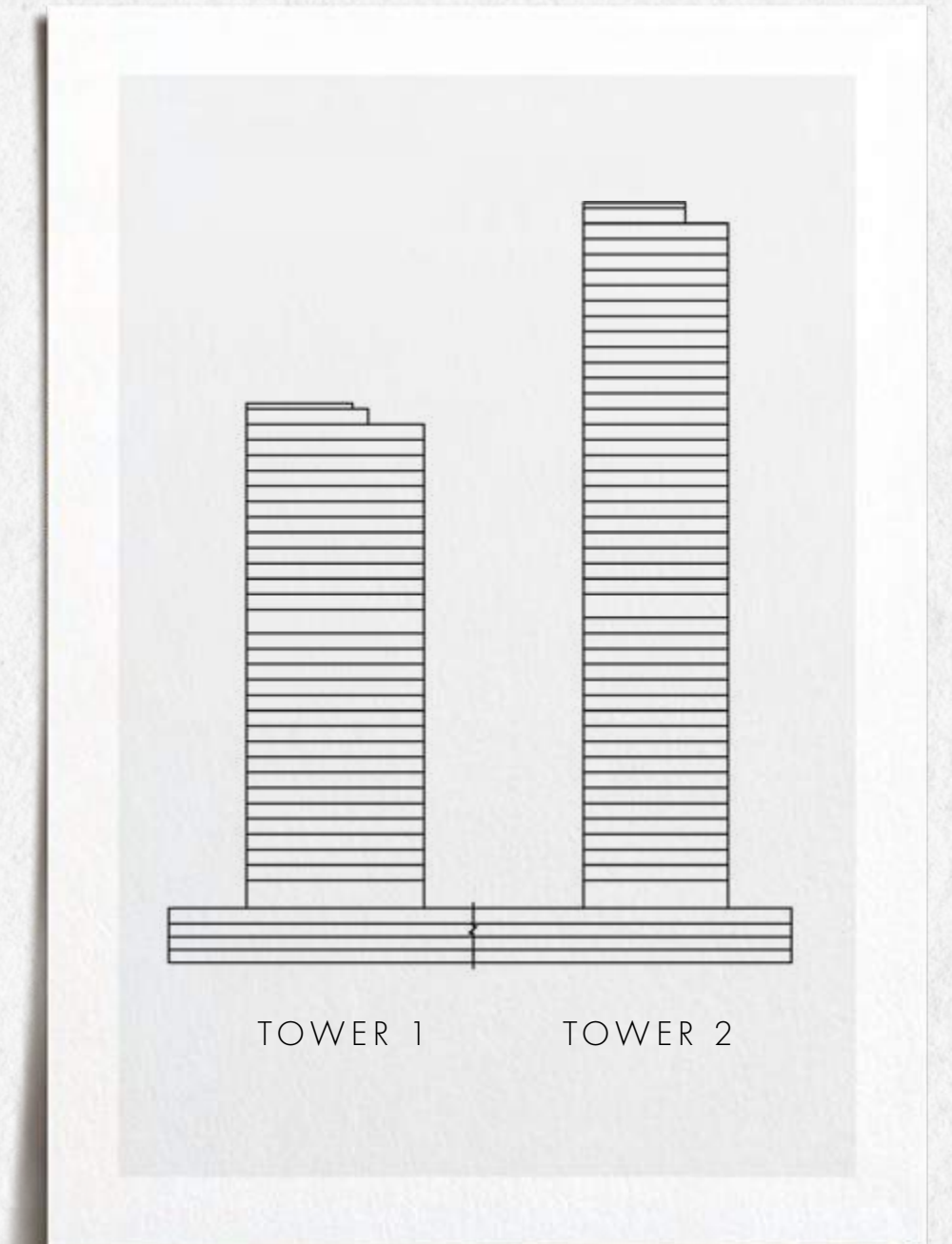
Imagine effortlessly drifting from the short trip home from a day in the world's most exciting city and into a dappled infinity pool overlooking the Arabian Sea. This is where life finds its perfect balance.

PROJECT

TWO OF A KIND

*Two landmarks, one vision of
elegance.*

The Soluever towers stand in unison, evoking the silhouette of sails catching the wind – a nod to the city's maritime heritage. Offering covetable views of the Forest, the Cove, and the Dubai skyline, they race skywards in harmony, spanning 44 levels and 31 respectively, atop a three-tier podium embraced by lush, tropical landscaping. Inside, a palette of raw materials borrowed from nature itself, fostering a close sensory connection with the world beyond.



TOWER 1

TOWER 2

31 LEVELS

44 LEVELS

3 PODIUM FLOORS

GROUND FLOOR



SPACE TO EMBRACE

THE SOULEVER COLLECTION

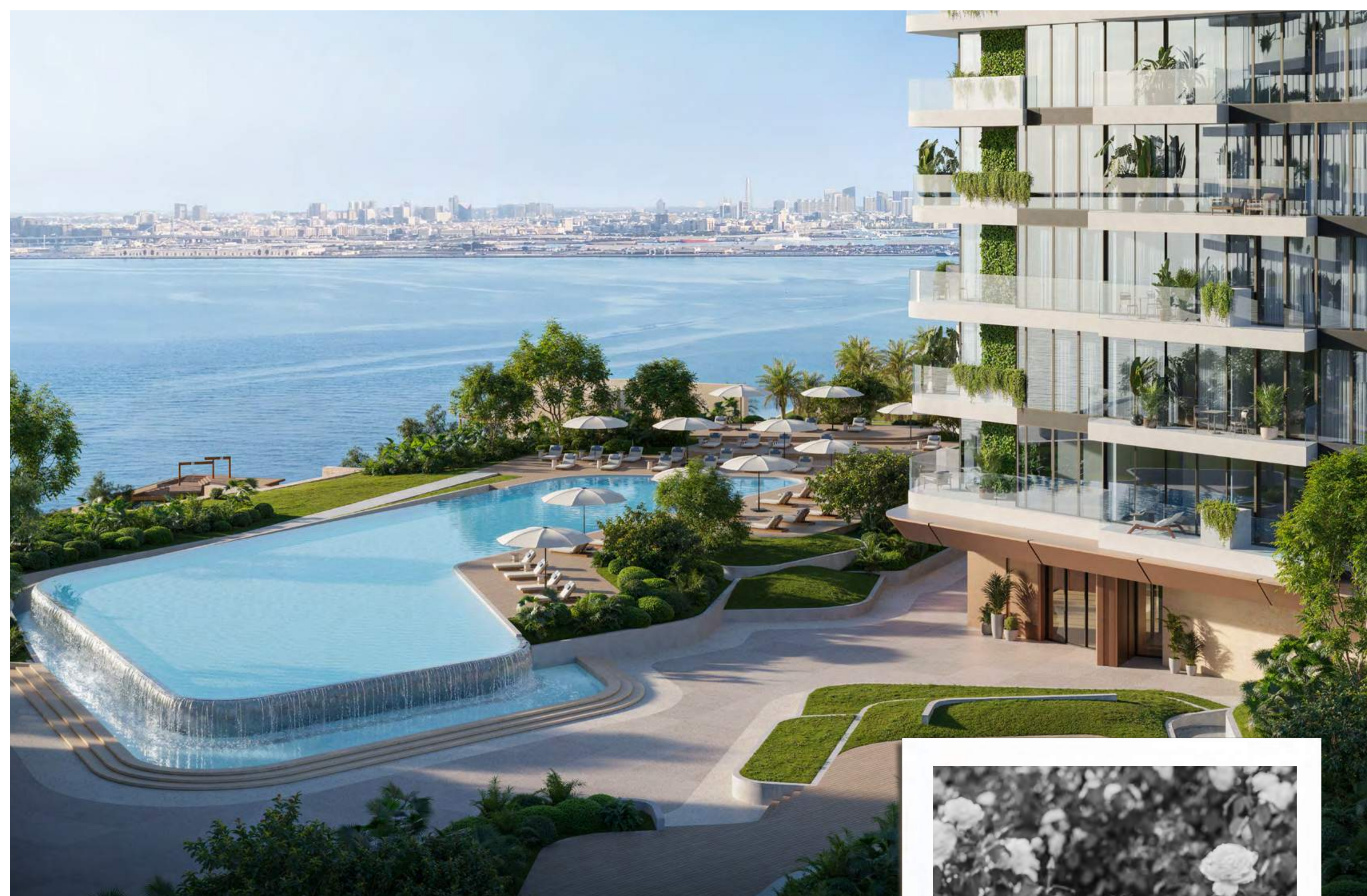
- 1-bedroom apartments : 81 sqm
- 2-bedroom apartments: 130 sqm
- 3-bedroom apartments: 178 sqm
- 4-bedroom duplexes: 286 sqm
- 2-bedroom podium chalets: 268 sqm
- 5-bedroom penthouses: 1,486 sqm

THE RESIDENCES

FEELS LIKE HOME

*Somewhere to suit every family,
whatever the size.*

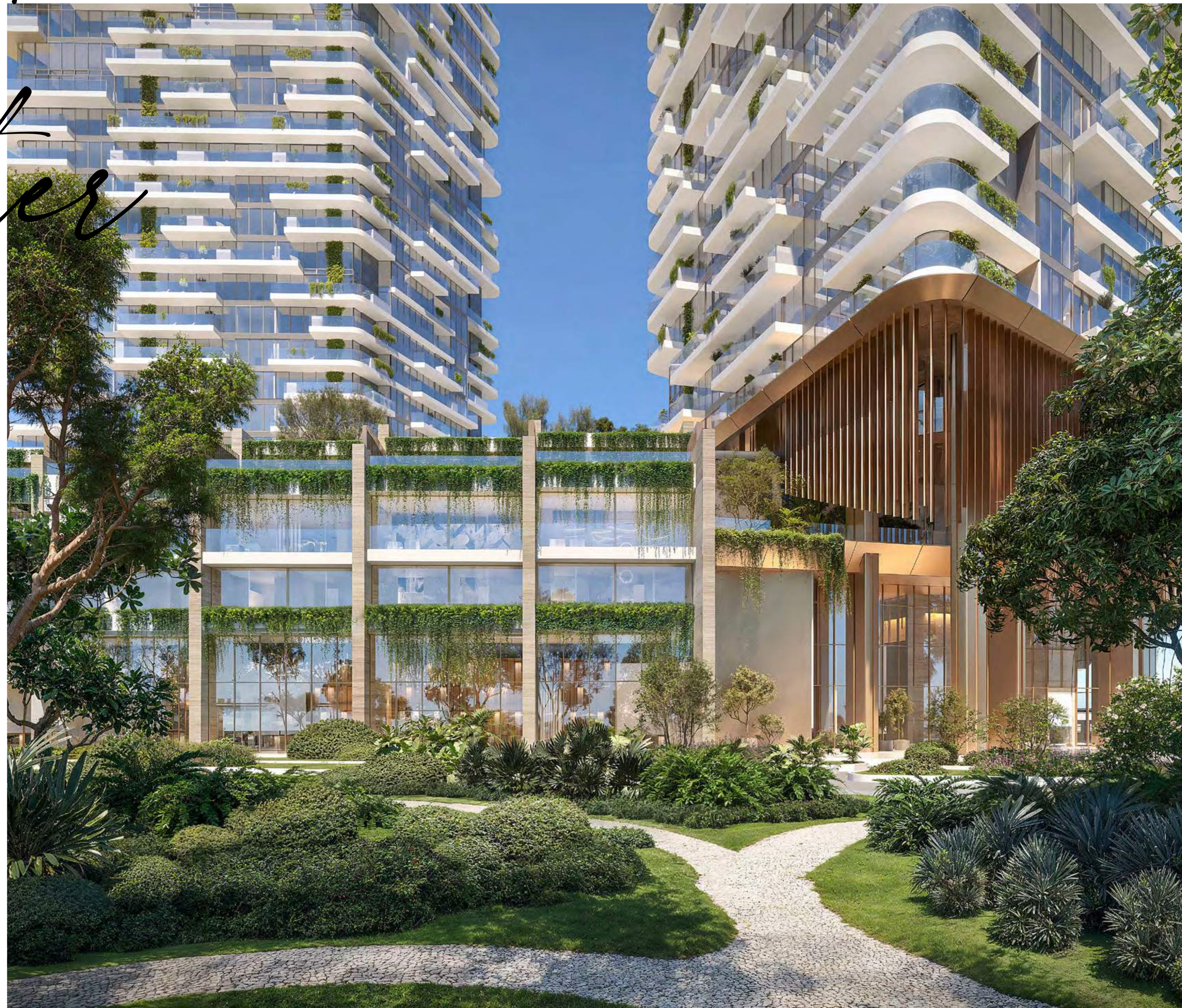
With a mix of 1-, 2-, and 3-bedroom apartments, 4-bedroom duplexes, 2-bedroom podium chalets, and 5-bedroom penthouses adorned in a warm, minimalist style, Soulever has the perfect residence for every need. Its balconies, terraces and rooftops provide unrivalled views and a peaceful private space to disconnect with the outside world.



OUTSIDE SPACE

Connected to Mother Nature

Layered terraces are carved out to maximise light and airflow, and densely planted to connect the Soulevar community with nature – a masterclass in sleek biophilic design, with sweeping views of the Forest, the Cove, and the Dubai skyline.



LIVING SPACE

A SANCTUARY OF LIGHT, SPACE, AND SERENITY



*You and I, sharing
sunrises, and twinkling
Dubai nights*

*Enter a serene haven where soaring 3.3-meter ceilings
and open-plan spaces flow effortlessly to sunlit balconies
framed by panoramic views. Every detail is designed to
inspire calm, inviting you to unwind, pause, breathe,
and savor quiet moments while immersing yourself in
the timeless beauty of your surroundings.*

BEDROOMS



INTO THE FOLD

The master bedrooms at Soulever offer a serene and elegant retreat, with private en-suite bathrooms and thoughtfully integrated storage.

Organic, flowing shapes and calm surroundings create a tranquil sanctuary, perfectly designed for rest, rejuvenation, and personal retreat.



A SPACE TO GATHER

Soulever's open-plan kitchens pair a timeless neutral palette with organic curves and natural stone. Sleek cabinetry flows into stone surfaces, creating effortless elegance. Expansive windows flood the space with light and sea views, while integrated appliances, hidden storage, and ambient lighting bring refined simplicity and ease.

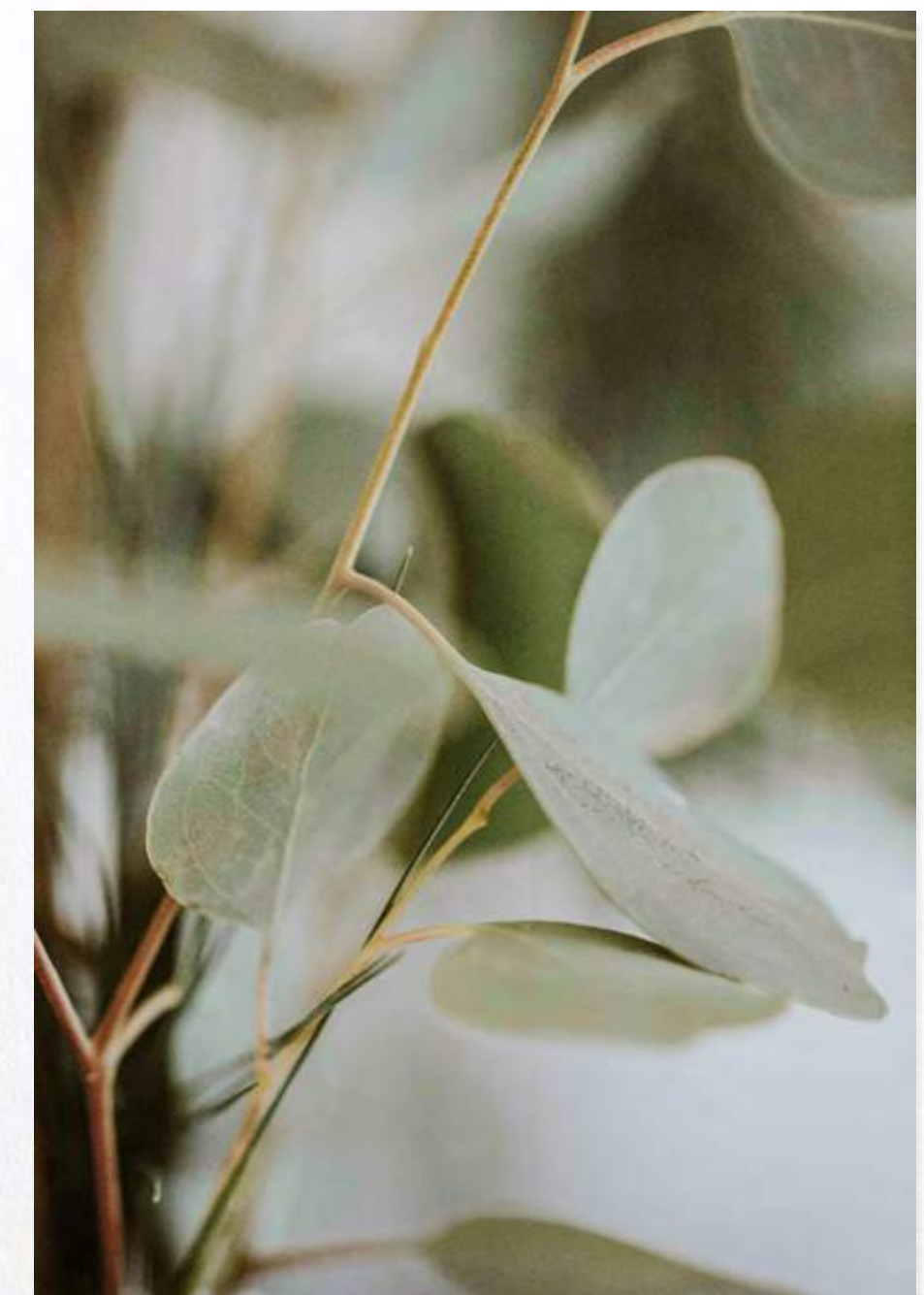


BATHROOM



DESIGNED FOR DAILY RITUALS

*Relax and unwind in your personal
spa-grade sanctuary – a serene
space to decompress.*



PODIUM CHALETs

ROOM FOR EVERYONE

Eight two-bedroom chalet units sit within the podium, richly furnished with the same tactile raw materials to mirror the natural landscape beyond. With views over the Cove and a balcony on each floor, plus a private rooftop terrace complete with an outdoor lounge and plunge pool – the perfect vantage point to watch the world go by.



PENTHOUSES

COME HOME TO EXTRAORDINARY



The Penthouse crowns each tower. Unfurling over three floors and featuring bespoke interiors, they cover an impressive 284 sqm to 344 sqm with five bedrooms including the master suite, plus staff quarters.

Grand soirees and intimate suppers are catered for in equal measure, be it at the banqueting table or the cosy breakfast nook.

Inside, the fire pit provides a striking focal point for guests to gravitate towards. Outside, the expansive terrace is equipped with its own kitchen. Retreat to the top-floor entertainment suite for world-class views out to the Forest, the Cove, and the Dubai skyline.

Every desire anticipated.

AMENITIES

Home comforts

Arranged within a lush mediterranean park, Soulever residents can enjoy the ultimate leisure landscape with a plethora of incredible facilities at their fingertips, bringing comfort, entertainment and convenience to the fore of this luxurious way of life.



Gym
Spa
Exercise park
Yoga space
Residents lounge
Library
Event space
Kids pool
Playground
Lounges
Heated pool
Splash pool
Podium park



UNIQUE SELLING POINTS



*Something
to write
home about*

Beachfront location

Breathtaking panoramic views

Luxurious amenities

A pebble-skip from the city

Elegant contemporary design

Lush urban oasis

Tree-lined retail avenues

RETAIL AND LEISURE

MEET, EAT, SHOP, REPEAT.

*Tree-lined avenues meander through
the development. Your new favourite
date-night restaurant, independent
coffee roasters and fashion boutiques
could be right downstairs.*



SOULEVER

BEYOND

WWW.BEYONDDEVELOPMENTS.AE

Interior renders: These renders are non-binding, for illustrative purposes only, and subject to change without notice. Final materials, finishes, and configurations may differ based on availability, design updates, and approvals. Loose furniture, fixtures, lighting, wall cladding, and mounted items are NOT included. In case of conflict, contractual documents, including the Sale and Purchase Agreement (SPA), will prevail. THE DEVELOPER SHALL NOT BE HELD RESPONSIBLE FOR ANY DISCREPANCIES, INACCURACIES, ERRORS, OR OMISSIONS IN THE RENDERS, NOR FOR ANY CONSEQUENCES, LOSSES, OR DAMAGES RESULTING FROM RELIANCE ON THEM AND MAKES NO GUARANTEES OF THEIR ACCURACY OR COMPLETENESS. Exterior Renders: These renders are non-binding, for illustrative purposes only, and subject to change without notice. In case of conflict, contractual documents, including the Sale and Purchase Agreement (SPA), will prevail. THE DEVELOPER SHALL NOT BE HELD RESPONSIBLE FOR ANY DISCREPANCIES, INACCURACIES, ERRORS, OR OMISSIONS IN THE RENDERS, NOR FOR ANY CONSEQUENCES, LOSSES, OR DAMAGES RESULTING FROM RELIANCE ON THEM AND MAKES NO GUARANTEES OF THEIR ACCURACY OR COMPLETENESS.