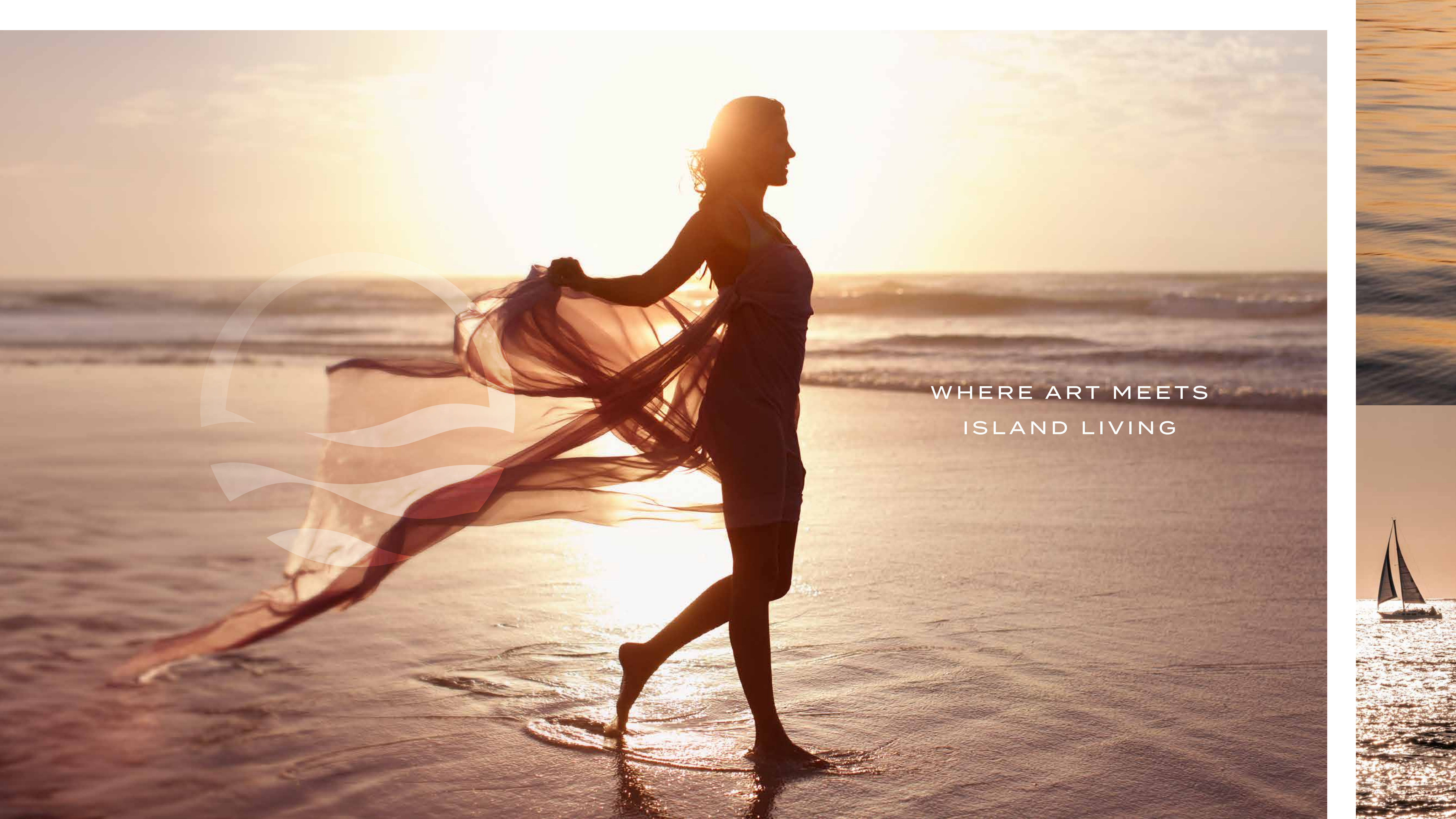




SHORELINE
BY *DAMAC*

AL MARJAN ISLAND



WHERE ART MEETS
ISLAND LIVING



PRESENTING

SHORELINE

BY *DAMAC*

AL MARJAN ISLAND

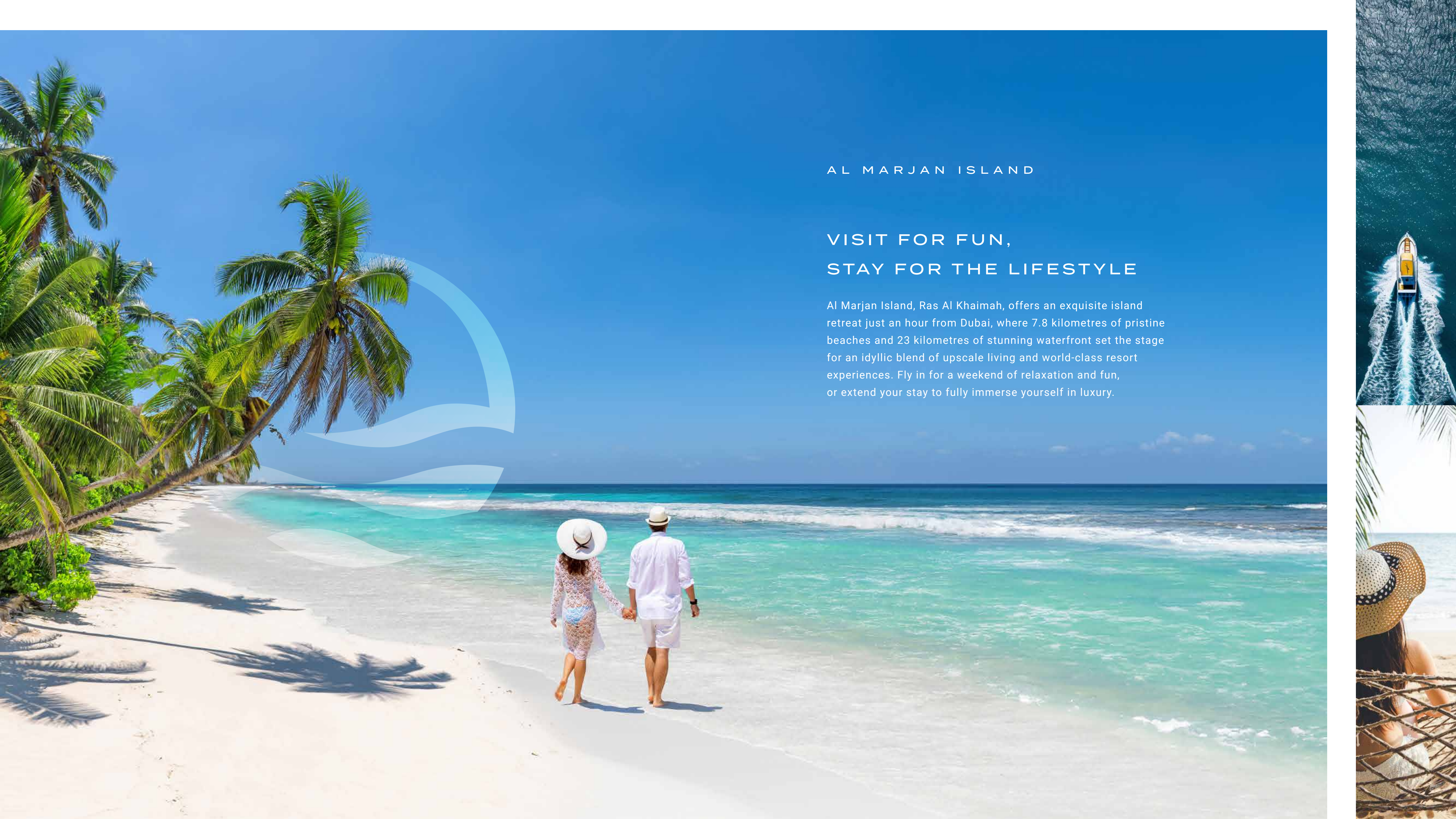




LUXURY, LEISURE,
AND ISLAND LIFE...
EXCLUSIVELY YOURS

Designed to cater to your every need, Shoreline by DAMAC is a collection of branded beachfront residences on Al Marjan Island, with world-class amenities and breathtaking views. Whether it's short leisurely stays, long luxurious holidays, or a place to live year-round, this truly is your home away from home.





AL MARJAN ISLAND

VISIT FOR FUN, STAY FOR THE LIFESTYLE

Al Marjan Island, Ras Al Khaimah, offers an exquisite island retreat just an hour from Dubai, where 7.8 kilometres of pristine beaches and 23 kilometres of stunning waterfront set the stage for an idyllic blend of upscale living and world-class resort experiences. Fly in for a weekend of relaxation and fun, or extend your stay to fully immerse yourself in luxury.



SHORELINE

BY *DAMAC*

ISLAND LIVING, BEACHSIDE
BLISS, PARADISE FOUND.



PRISTINE BEACH
with direct access



5-STAR RESORT-STYLE
amenities



STUNNING PANORAMIC
sea views

5

MINUTES FROM
Al Marjan Island
public beach

6

MINUTES FROM
Al Marjan Island Promenade
(scenic walkway)

6

MINUTES FROM
Al Marjan Island Boulevard
(shopping and dining)

WYNN
RESORT





THE PERFECT PLACE FOR YOUR PERSONAL HAVEN

Located on Al Marjan Island's View Island, the farthest from the mainland, Shoreline by DAMAC ensures residents enjoy the utmost privacy and serenity, with breathtaking views of both sunrise and sunset.



JUST BEYOND DUBAI, PURE PARADISE

Perfectly positioned near top attractions in Ras Al Khaimah and just an hour from Dubai, Shoreline by DAMAC effortlessly combines island living with urban convenience. Enjoy a serene retreat, or a lively break, with the ultimate destination for short-term escapes and long-term stays.



Royal Yacht Club RAK
17 minutes



Dreamland Aqua Park
17 minutes



Flamingo Beach
26 minutes



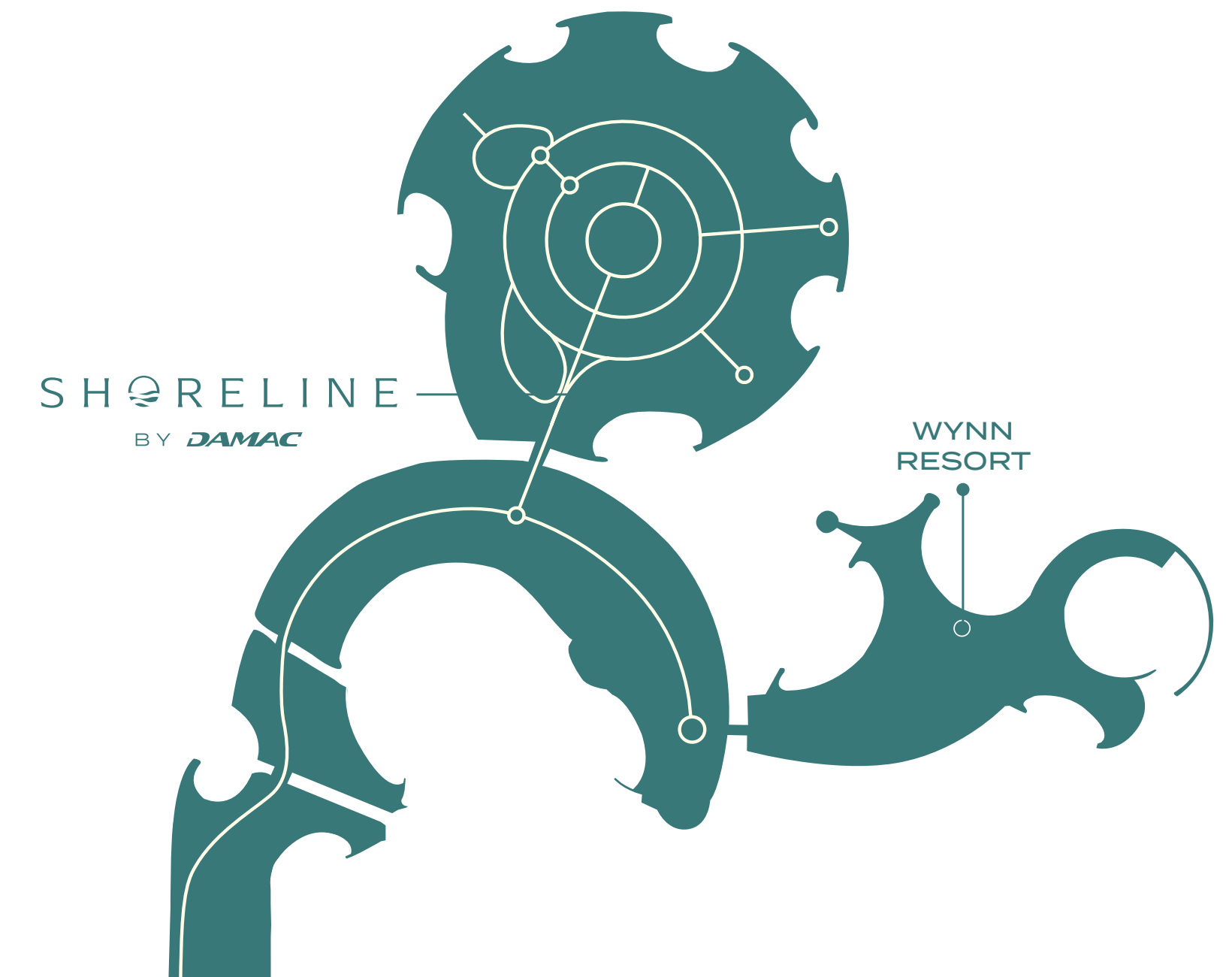
RAK Airport
34 minutes



Dubai International Airport
56 minutes



Downtown Dubai
68 minutes



SHORELINE
BY DAMAC

WYNN
RESORT

MINUTES FROM IT ALL

Direct Beach Access
0 minutes

**Al Marjan Island Promenade
(scenic walkway)**
6 minutes

Al Hamra Mall
12 minutes

WYNN Resort
5 minutes

**Al Marjan Island Boulevard
(shopping and dining)**
6 minutes

Al Hamra Golf Club
13 minutes

LEVELS OF ISLAND LIVING

GROUND FLOOR

4-BEDROOM TOWNHOUSES

WATERSPORTS

ADULT POOL

KIDS POOL

UNDERWATER VIEWING DECK

RUNNING TRACK

BAMBOO FOREST

5-BEDROOM TOWNHOUSES

GYM

AQUA OASIS

SPA

FLOATING CABANA

WATERFRONT BAR

FLOATING BAR

LEVELS 1-16

1-BEDROOM LUXURY APARTMENTS

2-BEDROOM LUXURY APARTMENTS

3-BEDROOM LUXURY APARTMENTS

ROOF LEVEL

SUNSET BAR

PANORAMA VIEW

INFINITY RELAX

ZEN GARDEN

YOGA

ROOF LEVEL

LEVELS 1-16

GROUND FLOOR



STEP INTO YOUR
GATEWAY TO
GET AWAY





FIRST GLANCE
BECOMES
A LASTING
IMPRESSION

As you step into the Shoreline by DAMAC lobby, you are instantly captivated by a seamless blend of art and design. Floor-to-ceiling windows flood the space with natural light, illuminating sleek, contemporary lines and textured accents that highlight the best of modern architecture.





“NATURAL LIGHT BREATHES LIFE INTO
A SPACE, TRANSFORMING IT INTO A VIBRANT
AND UPLIFTING SANCTUARY.”



YOUR OWN BEACH, JUST STEPS AWAY

At Shoreline by DAMAC, your pristine beachfront is just a short stroll from your doorstep. Experience island bliss with direct access to an alluring, undisturbed beach, where blue hues and golden sands create a perfect coastal retreat.

WAVES OF LEISURE ON THE GROUND FLOOR

Along with direct beach access, Shoreline by DAMAC offers a wealth of ground-level amenities, both indoors and outdoors, designed for ultimate luxury, comfort, and convenience.



Adult pool



Watersports



Running track



Underwater viewing deck



Spa



Floating cabana



Kids pool



Aqua oasis



Bamboo forest



Gym



Waterfront bar



Floating bar



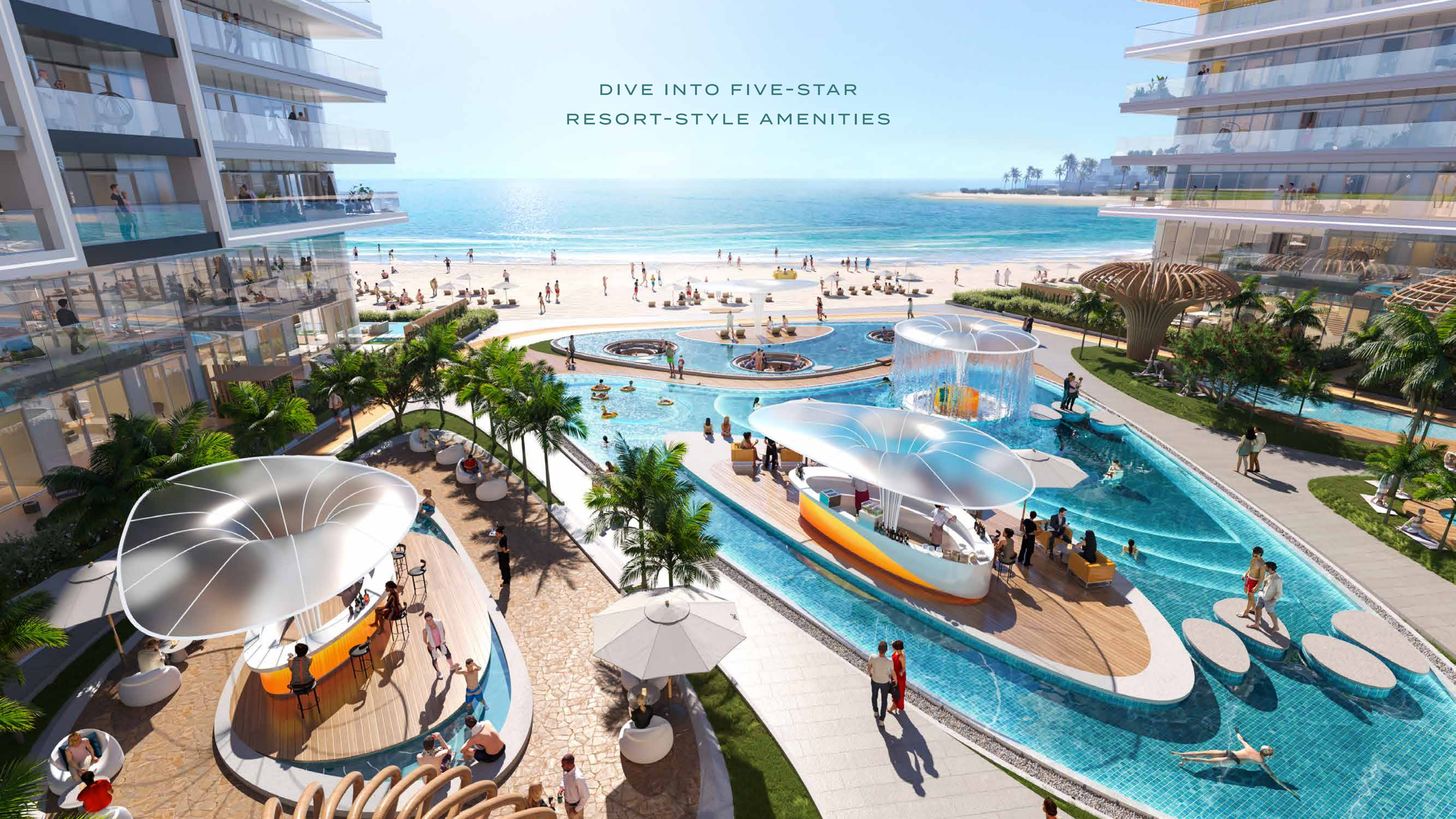


GROUND FLOOR OUTDOOR AMENITIES*

- 1 WATERSPORTS
- 2 ADULTS POOL
- 3 KIDS POOL
- 4 UNDERWATER VIEWING DECK
- 5 RUNNING TRACK
- 6 BAMBOO FOREST
- 7 AQUA OASIS
- 8 FLOATING CABANA
- 9 WATERFRONT BAR
- 10 FLOATING BAR

*SPA AND GYM INDOORS

DIVE INTO FIVE-STAR
RESORT-STYLE AMENITIES



Lounge the day away in a dedicated aqua oasis, featuring undisturbed sea views, or enjoy your time in the underwater viewing deck as water cascades down around you. Then, head to the beach, only steps away, for some thrilling watersports. Afterwards, cool off in the luxurious adult pool, whilst the children remain entertained in their very own dedicated kids pool.







A RETREAT WITHIN A RETREAT

Shoreline by DAMAC is your peaceful, poolside retreat. From a floating cabana, perfectly nestled away for an afternoon siesta, to bamboo installations that provide both shade and an amplified breeze, this is your escape into quietude.





SAVOUR THE TASTE OF PARADISE

Spend the day in the pool as you sip on a cocktail at the floating bar, or enjoy appetising bites, innovative drinks, and a vibrant atmosphere while taking in the stunning sea views at the waterfront bar. Either way, relish in the unmatched experience of luxury, leisure, and indulgence by the water's edge.







FIND YOUR ISLAND SANCTUARY

Indulge in holistic wellness as you rejuvenate your mind, body, and soul. Escape to the property's luxurious spa, where the tranquil ambiance and serene atmosphere provide the perfect setting for both traditional treatments and modern therapeutics, including a dedicated cryotherapy chamber.





HEALTH AND FITNESS IN HARMONY

Achieve your fitness goals, in a space where natural light meets organic design, with cutting-edge gym equipment focused on strength, calisthenics, and hypertrophy training. For those who prefer the outdoors, Shoreline by DAMAC's running track wraps around the tranquil pools and is ideal for a morning jog or an evening walk.





ROOF LEVEL AMENITIES

- 1 SUNSET BAR
- 2 PANORAMIC VIEW
- 3 INFINITY RELAXATION
- 4 ZEN GARDEN
- 5 YOGA

ELEVATED HEIGHTS OF ISLAND LUXURY

As well as amenities on the ground floor, Shoreline by DAMAC offers an array of rooftop amenities. Discover serene spaces and panoramic views that elevate your island living experience to new heights.



Sunset bar



Panoramic view



Zen garden



Yoga



Infinity relaxation





BALANCE AT THE TOP

Shoreline by DAMAC's rooftop yoga offers a majestically unparalleled setting. With sea views as your serene backdrop and the horizon stretching endlessly, every pose is a celebration of a balanced mind and body.





HEAVENLY HEIGHTS OF TRANQUILLITY

Find your sanctuary in the sky, with spellbinding views that take your breath away, whether you're stretched out on a hammock in the infinity relaxation area, or immersed in a peaceful meditation in the Zen garden.





SUNSET DELIGHTS AND VIBRANT NIGHTS

Surrounded by extraordinary views and the gentle waves of the Arabian Sea, at Shoreline by DAMAC, end the day with a sublime rooftop experience at the exquisite sunset bar, the ideal spot to sip on a drink and watch the sun dip below the horizon.





LUXURY TOWNHOUSES

YOUR FAMILY ISLAND RETREAT

At Shoreline by DAMAC, 4- and 5-bedroom townhouses are the perfect retreat for families. These homes have a minimalist yet grand design, with neutral tones and standout accents complimenting the high-quality materials and finishes.





With floor-to-ceiling windows, their own private pools, and easy access to the ground floor amenities, these townhouses provide an exceptional island living experience.







LUXURY APARTMENTS

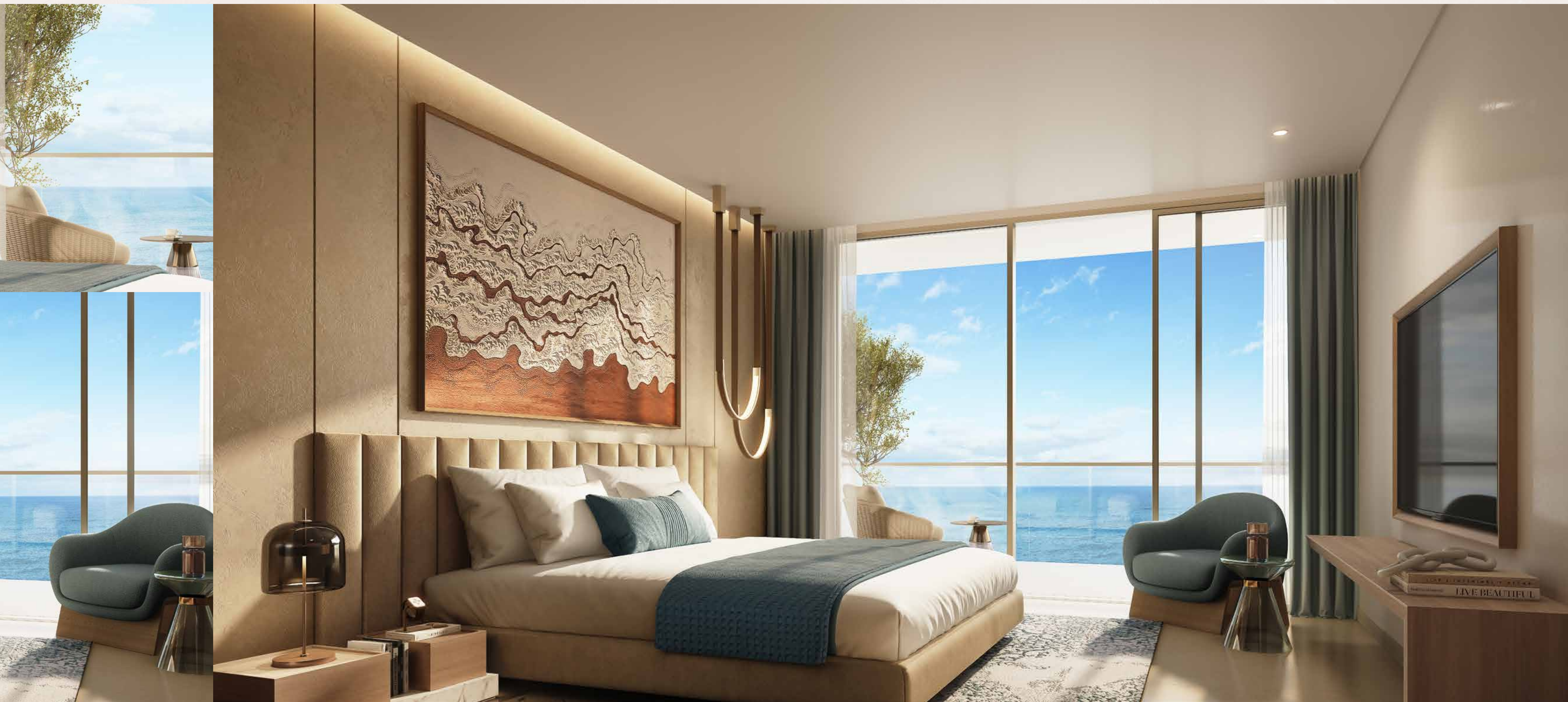
YOUR EXCLUSIVE ISLAND LIFESTYLE

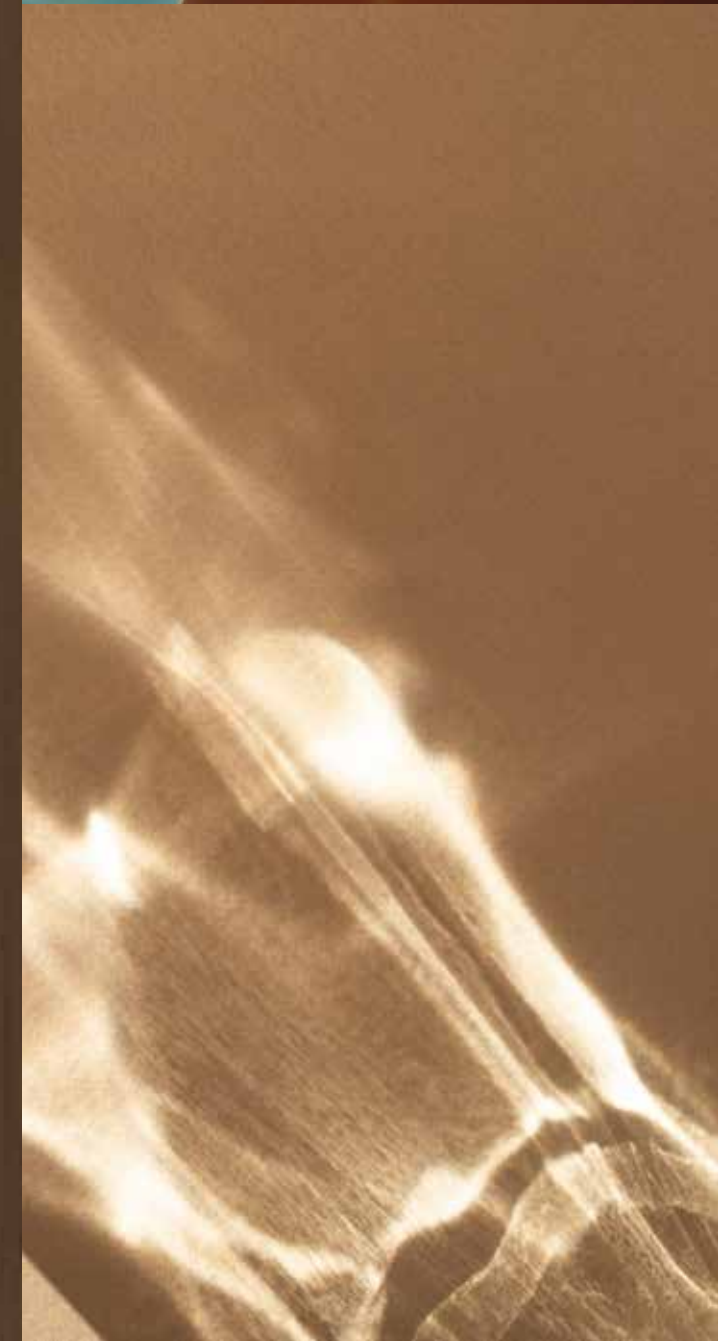
For a refined island life, look no further than the stylish and inviting 1-, 2-, and 3-bedroom luxury apartments, where meticulously designed interiors combine modern elegance with stylish comfort, including floor-to-ceiling windows and uninterrupted sea views.













LIFE FROM A NEW POINT OF VIEW

Imagine the pleasure of indulging in unparalleled views from your balcony, every day, with sweeping vistas that stretch across the horizon, including those of Al Marjan Island and the Arabian Sea.



WHERE ISLAND LIFE IS WINNING

At Shoreline by DAMAC, add a touch of vibrant charm to your island calm. Experience lively nightlife with dazzling fireworks, chic bars, and upscale dining, all within easy reach from your luxurious residence.

DAMAC GROUP: REDEFINING LUXURY LIVING WORLDWIDE

The DAMAC Group proudly launched its premier property development division, DAMAC Properties, in the UAE in 2002. Expanding globally, DAMAC now brings its luxurious living experiences to discerning buyers in over 15 cities around the world. Specialising in high-end high-rise architecture, exclusive branded residences, and expansive multi-million square-foot master-planned communities, DAMAC sets the standard for opulent living and sophisticated design.



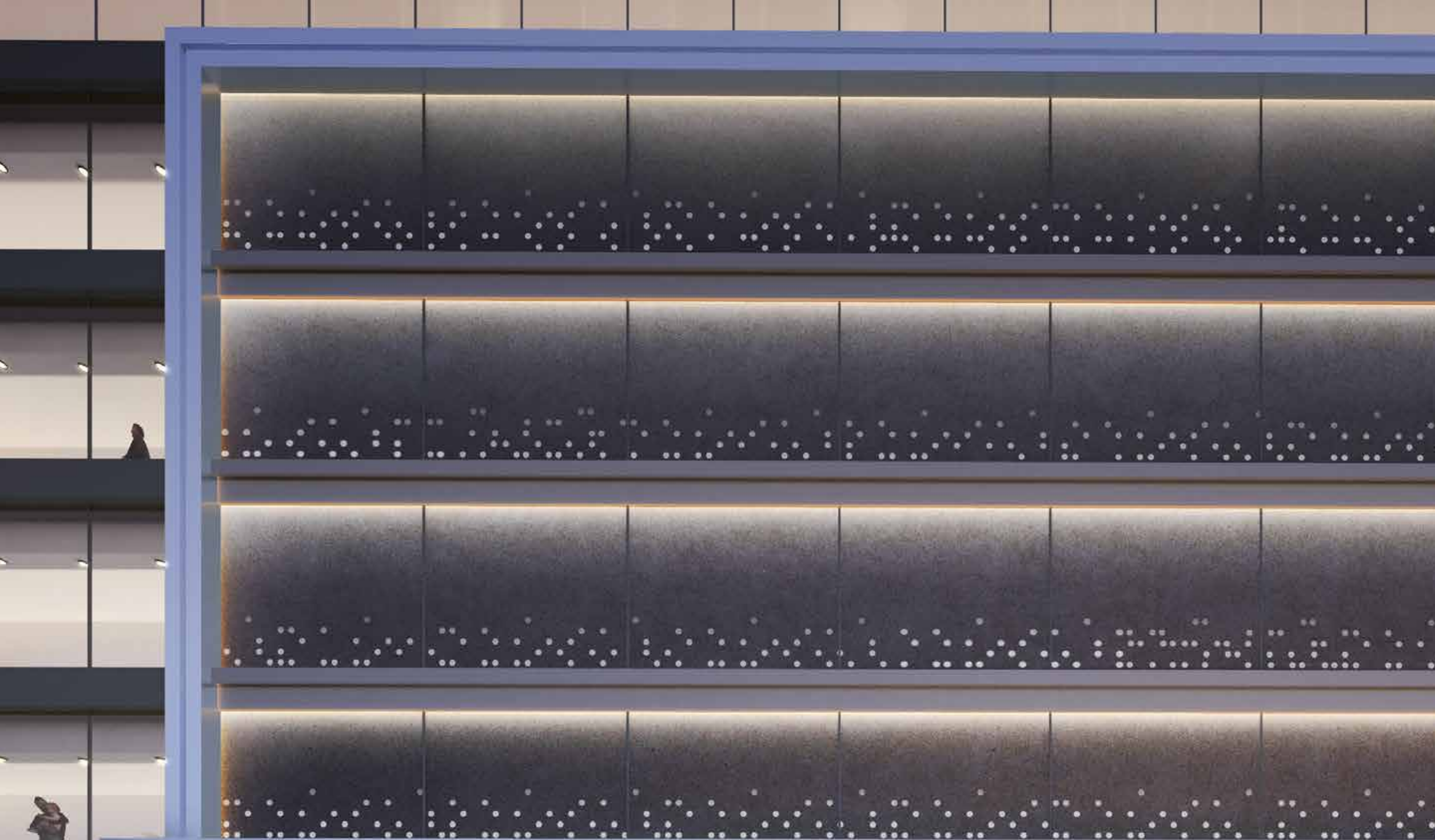
3,500+
employees worldwide



40,000+
units in progress and planning



47,600+
units delivered



AL MARJAN ISLAND, RAS AL KHAIMAH: A PREMIER DESTINATION FOR HIGH RETURNS

Ras Al Khaimah is rapidly emerging as a top investment destination in the UAE, a regional tourist hub, and an upcoming destination for holiday homes. It offers a unique blend of natural beauty, luxury living, and promising returns. Ras Al Khaimah stands out as a low-risk, high-yield investment alternative, with Al Marjan Island offering exclusivity through limited land availability and active project launches by selected developers. This makes it an exclusive location for ultra-high-net-worth individuals. Invest in Al Marjan Island, Ras Al Khaimah, for a unique opportunity to experience luxurious island living while enjoying substantial financial returns.



3.5 million
tourists annually by 2030



9%
projected rental returns



35.9%
increase in year-over-year sales prices for
apartments (recorded in december, 2023)



FLOOR PLANS

5-BEDROOM TOWNHOUSE

A

	SQ MT	SQ FT
SALEABLE AREA	488.02	5253.00



LOWER FLOOR



UPPER FLOOR



LOWER FLOOR



UPPER FLOOR

5-BEDROOM TOWNHOUSE

A-M

	SQ MT	SQ FT
SALEABLE AREA	472.58	5086.81



LOWER FLOOR



UPPER FLOOR



LOWER FLOOR



UPPER FLOOR

4-BEDROOM TOWNHOUSE

A

	SQ MT	SQ FT
SALEABLE AREA	429.87	4627.08



LOWER FLOOR



UPPER FLOOR



LOWER FLOOR



UPPER FLOOR

4-BEDROOM TOWNHOUSE

A-M

	SQ MT	SQ FT
SALEABLE AREA	427.79	4604.69



LOWER FLOOR



UPPER FLOOR



LOWER FLOOR



UPPER FLOOR

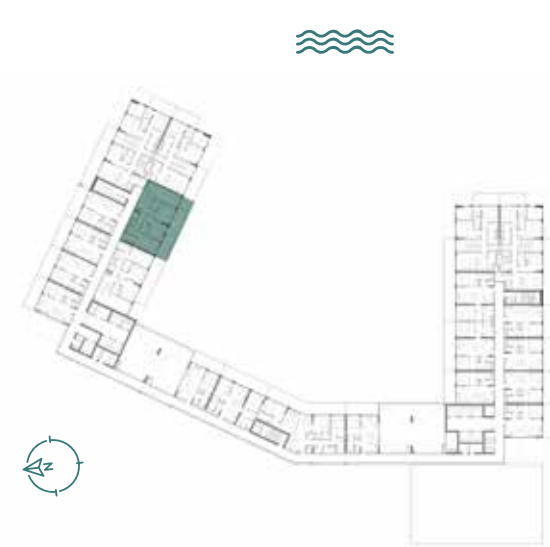
4-BEDROOM TOWNHOUSE

B

	SQ MT	SQ FT
SALEABLE AREA	300.58	3235.42



LOWER FLOOR



UPPER FLOOR



LOWER FLOOR



UPPER FLOOR

4-BEDROOM TOWNHOUSE

B-M

	SQ MT	SQ FT
SALEABLE AREA	294.31	3167.93



LOWER FLOOR



UPPER FLOOR



LOWER FLOOR



UPPER FLOOR

3-BEDROOM APARTMENT

A1

	SQ MT	SQ FT
SALEABLE AREA	192.99	2077.33



LEVELS: 6-9,15,16



AL MARJAN ISLAND

3-BEDROOM APARTMENT

A1-M

	SQ MT	SQ FT
SALEABLE AREA	192.98	2077.22



LEVELS: 2-4,11-13



AL MARJAN ISLAND

3-BEDROOM APARTMENT

A2

	SQ MT	SQ FT
SALEABLE AREA	192.99	2077.33



LEVELS: 2-5, 10-14



3-BEDROOM APARTMENT

A 2-M

	SQ MT	SQ FT
SALEABLE AREA	192.98	2077.22



LEVELS: 5-10, 14-16



3-BEDROOM APARTMENT

B1

	SQ MT	SQ FT
SALEABLE AREA	182.89 - 183.04	1968.61 - 1970.23



LEVEL: 1



LEVELS: 5-10, 14-16



3-BEDROOM APARTMENT

B2

	SQ MT	SQ FT
SALEABLE AREA	183.02	1970.01



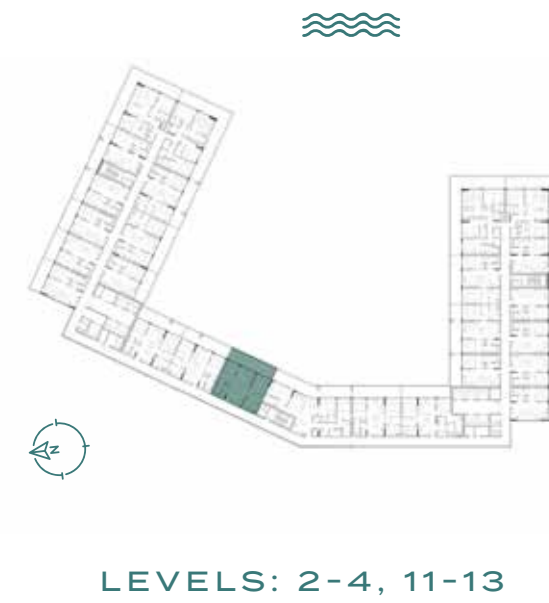
LEVELS: 2-4, 11-13



2-BEDROOM APARTMENT

A1

	SQ MT	SQ FT
SALEABLE AREA	115.36 - 115.89	1241.72 - 1247.43



2-BEDROOM APARTMENT

A1-M

	SQ MT	SQ FT
SALEABLE AREA	115.63 - 115.64	1244.63 - 1244.74



2-BEDROOM APARTMENT

A2

	SQ MT	SQ FT
SALEABLE AREA	115.64 - 115.89	1244.74 - 1247.43



LEVELS: 2-4, 11-13



LEVELS: 6-9, 15,16



2-BEDROOM APARTMENT

A 2-M

	SQ MT	SQ FT
SALEABLE AREA	115.63	1244.63



LEVELS: 2-4, 11-13



2-BEDROOM APARTMENT

A3

	SQ MT	SQ FT
SALEABLE AREA	115.36 - 115.64	1241.72 - 1244.74



LEVELS: 2-4, 11-13



LEVELS: 6-9, 15,16



2-BEDROOM APARTMENT

A3-M

	SQ MT	SQ FT
SALEABLE AREA	115.64	1244.74



LEVELS: 6-9, 15,16



2-BEDROOM APARTMENT

A4

	SQ MT	SQ FT
SALEABLE AREA	115.64	1244.74



LEVELS: 2-4, 11-13



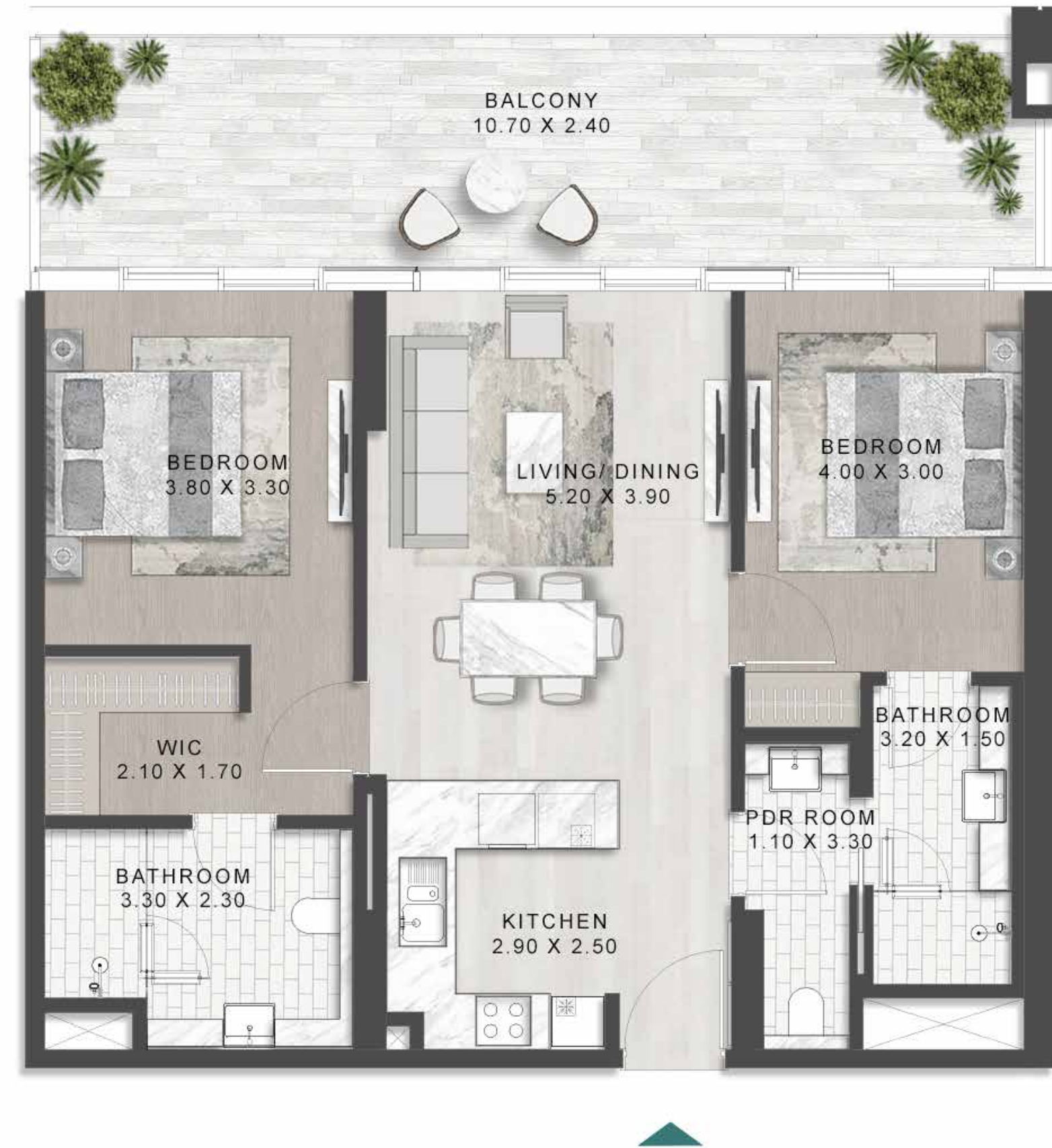
2-BEDROOM APARTMENT

A 4-M

	SQ MT	SQ FT
SALEABLE AREA	115.63	1244.63



LEVELS: 6-9, 15,16



2-BEDROOM APARTMENT

B

	SQ MT	SQ FT
SALEABLE AREA	154.31	1660.98



LEVELS: 2-16



2-BEDROOM APARTMENT

B-M

	SQ MT	SQ FT
SALEABLE AREA	154.32	1661.09



LEVELS: 2-16



2-BEDROOM APARTMENT

C1

	SQ MT	SQ FT
SALEABLE AREA	126.49	1361.53



LEVELS: 2-5, 10-14



2-BEDROOM APARTMENT

C 2

	SQ MT	SQ FT
SALEABLE AREA	126.49	1361.53



LEVELS: 6-9, 15,16



1-BEDROOM APARTMENT

A1

	SQ MT	SQ FT
SALEABLE AREA	75.39 - 77.80	811.49 - 837.43



1-BEDROOM APARTMENT

A1-M

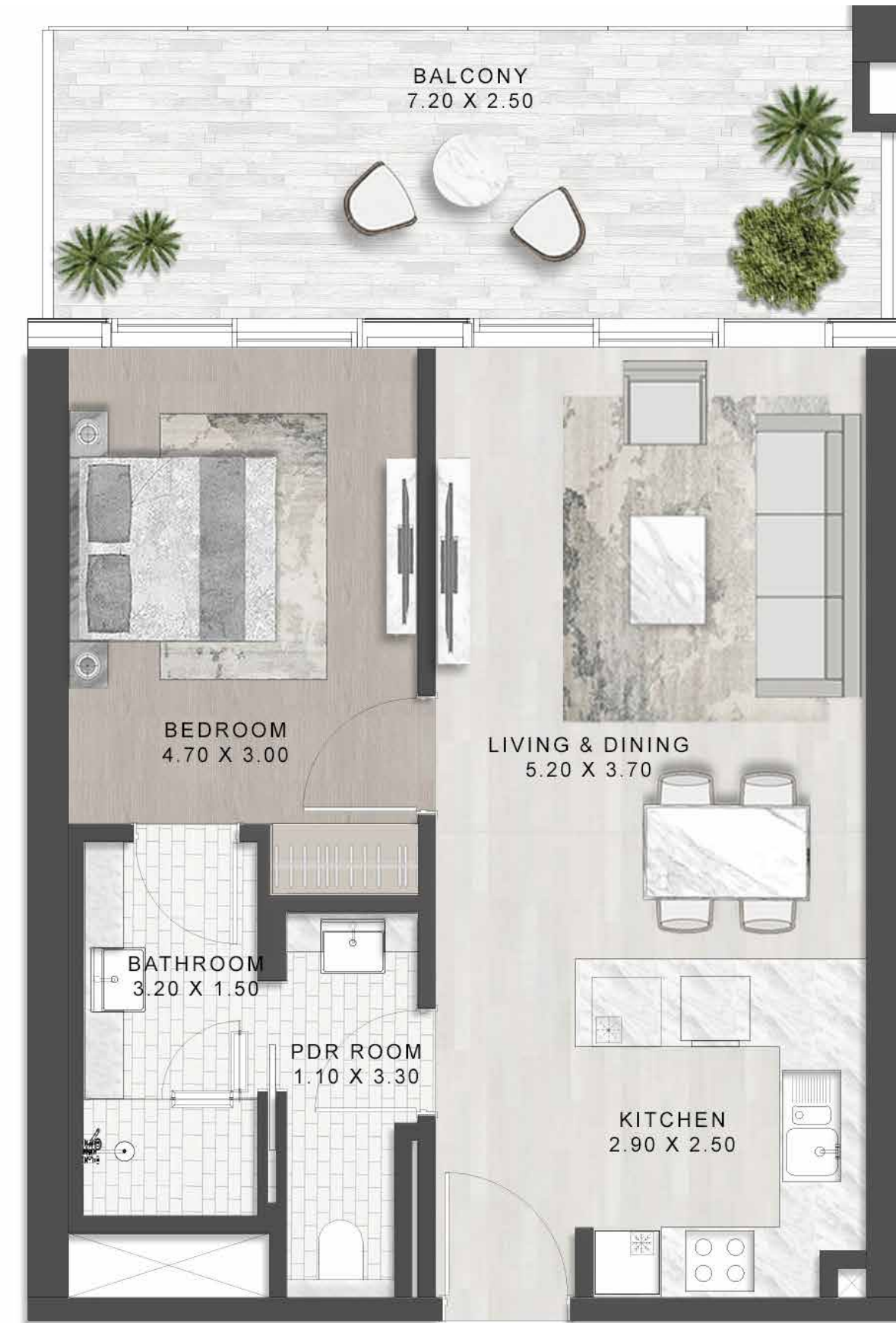
	SQ MT	SQ FT
SALEABLE AREA	75.39 - 78.10	811.49 - 840.66



1-BEDROOM APARTMENT

A2

	SQ MT	SQ FT
SALEABLE AREA	75.39 - 76.98	811.49 - 828.61



1-BEDROOM APARTMENT

A 2-M

	SQ MT	SQ FT
SALEABLE AREA	75.39 - 76.98	811.49 - 828.61



AL MARJAN ISLAND

1-BEDROOM APARTMENT

A3

	SQ MT	SQ FT
SALEABLE AREA	76.98	828.61



LEVELS: 2-4, 11-13



AL MARJAN ISLAND

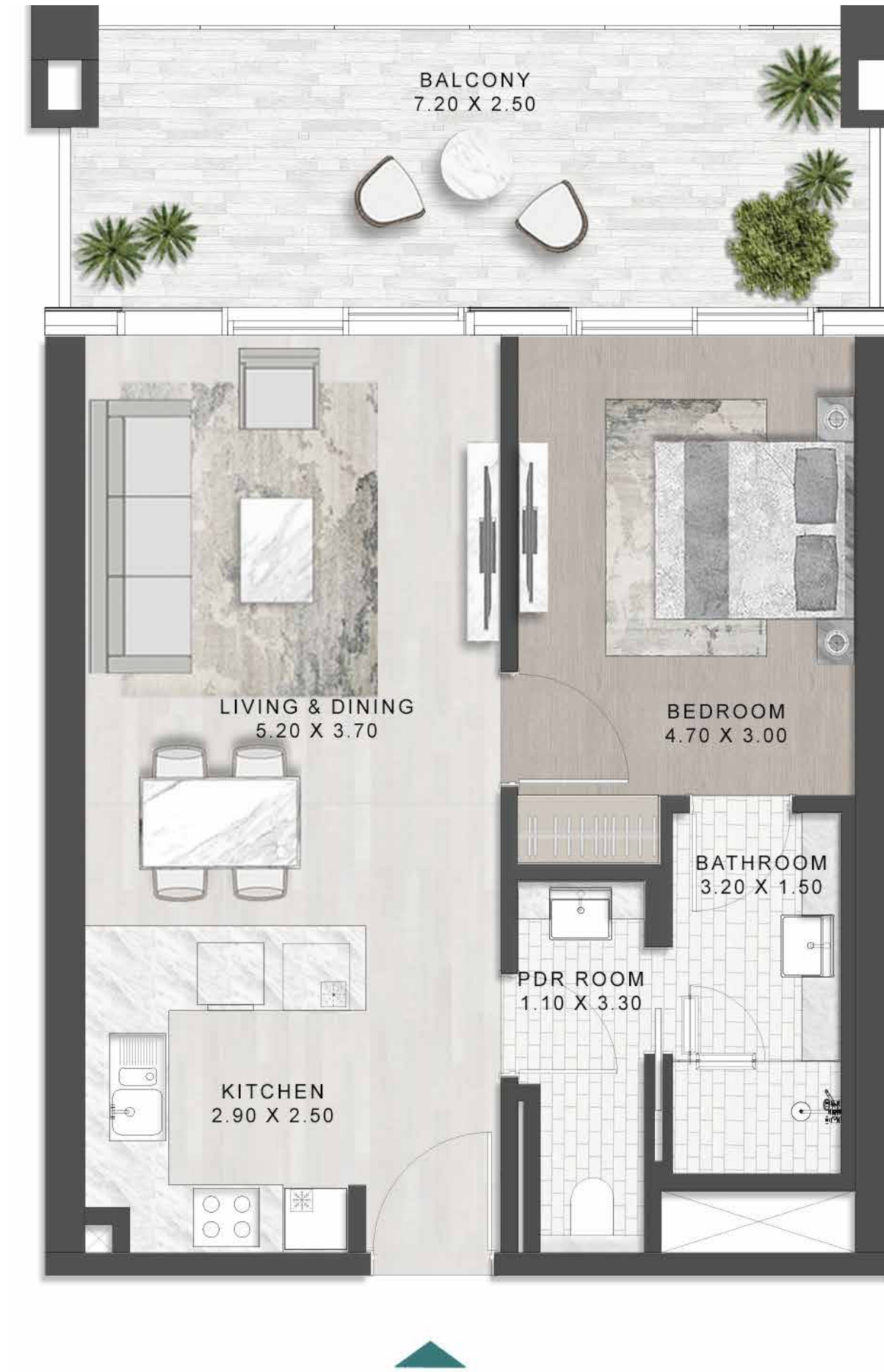
1-BEDROOM APARTMENT

A3-M

	SQ MT	SQ FT
SALEABLE AREA	76.98	828.61



LEVELS: 6-9, 15,16



AL MARJAN ISLAND

1-BEDROOM APARTMENT

A4

	SQ MT	SQ FT
SALEABLE AREA	75.39 - 77.24	811.49 - 831.40



LEVELS: 6-9, 15,16



AL MARJAN ISLAND

1-BEDROOM APARTMENT

A 4-M

	SQ MT	SQ FT
SALEABLE AREA	75.39 - 77.21	811.49 - 831.08



LEVELS: 2-4, 11-13



AL MARJAN ISLAND

1-BEDROOM APARTMENT

B1

	SQ MT	SQ FT
SALEABLE AREA	89.14	959.49



LEVELS: 6-9, 15,16



AL MARJAN ISLAND

1-BEDROOM APARTMENT

B 1 - M

	SQ MT	SQ FT
SALEABLE AREA	89.14	959.49



LEVELS: 2-4, 11-13



AL MARJAN ISLAND

1-BEDROOM APARTMENT

B2

	SQ MT	SQ FT
SALEABLE AREA	89.14	959.49



LEVELS: 2-5, 10-14



AL MARJAN ISLAND

1-BEDROOM APARTMENT

B 2-M

	SQ MT	SQ FT
SALEABLE AREA	89.14	959.49



LEVELS: 5-10, 14-16



DAMAC PROPERTIES

LIVE THE LUXURY

Since 2002, DAMAC Properties has been at the forefront of the Middle East's luxury real estate market, delivering award-winning residential, commercial and leisure properties across the region and the world. Invest with DAMAC and partner with a globally recognised leader in premium real estate development.

 **47,600+**
UNITS DELIVERED*

 **40,000+**
UNITS IN PROGRESS*

 **4 MASTER PLAN COMMUNITIES**
LEADING REAL ESTATE DEVELOPER IN THE UAE

 **80+ M SQ.FT.**
PROJECTS UNDER PLANNING & DEVELOPMENT

 **10+ CITIES**
GLOBAL PRESENCE

 **GLOBAL BRAND COLLABORATIONS**

roberto cavalli

de GRISOGONO
GENEVE

VERSACE
HOME



TRUMP
THE TRUMP ORGANIZATION

روتانا
Rotana

FENDI
CASA

Radisson



*As of Q3 2024

LUXURY BY APPOINTMENT

CONTACT US AT ANY OF OUR OFFICES OR VISIT DAMACPROPERTIES.COM

UNITED ARAB EMIRATES

Dubai
Tel: 800-DAMAC (800-32622)
E-mail: dubai@damacgroup.com

Park Towers – Sales Centre
Dubai International Financial Centre

AYKON City – Sales Centre
Floor 63, Sheikh Zayed Road

DAMAC Hills – Sales Centre
Golf Veduta, Townhouse TH2

DAMAC Hills – Sales Centre
Bellavista (Carson Building)

DAMAC Hills 2 – Sales Centre
Amazonia Cluster, Villa 333

DAMAC Hills 2 – Sales Centre
Water Town

QATAR

Building 90, New Solta Area
Ali bin Abi Talib Street
Next to Omar bin Al Khattab
Health Centre
Tel: +974 44 666 986
Fax: +974 44 554 576
E-mail: doha@damacgroup.com

KINGDOM OF SAUDI ARABIA

DAMAC Towers Riyadh
South Tower
Olaya District
King Fahd Road
PO Box 102460
Tel: +966 11 835 0300
E-mail: ksa@damacgroup.com

TURKEY

Levazım, Mah. Koru Sk.
Zorlu Centre No. 2
IC Kapi No. 347,
Beşiktaş/İstanbul
Turkey
Tel: +90 212 892 0327
Fax: +90 212 890 7184
E-mail: turkey.office@damacgroup.com

UNITED KINGDOM

DAMAC Tower
63-71 Bondway London
SW8 1SQ
Tel: +44 (0) 207 590 8050
damactower.co.uk

CHINA

Beijing
East Tower
No.1 East Middle 3rd Road
Beijing 100020
4th Floor
Unit O3

Shanghai
3 Corporate Avenue
168 Hubin Road,
Huangpu District
Shanghai 25F
25th Floor
Units 2510-2511

HONG KONG


ICBC Tower
Three Garden Road, Central
15th Floor
Suite 1511

SINGAPORE


Asia Square Tower 1
Marina View, Marina Bay
Singapore O18960
11th Floor
Unit 11-06

 DAMACPropertiesOfficial

 DAMACOfficial

 DAMACOfficial

 DAMAC Properties

 DAMACOfficial

DAMAC