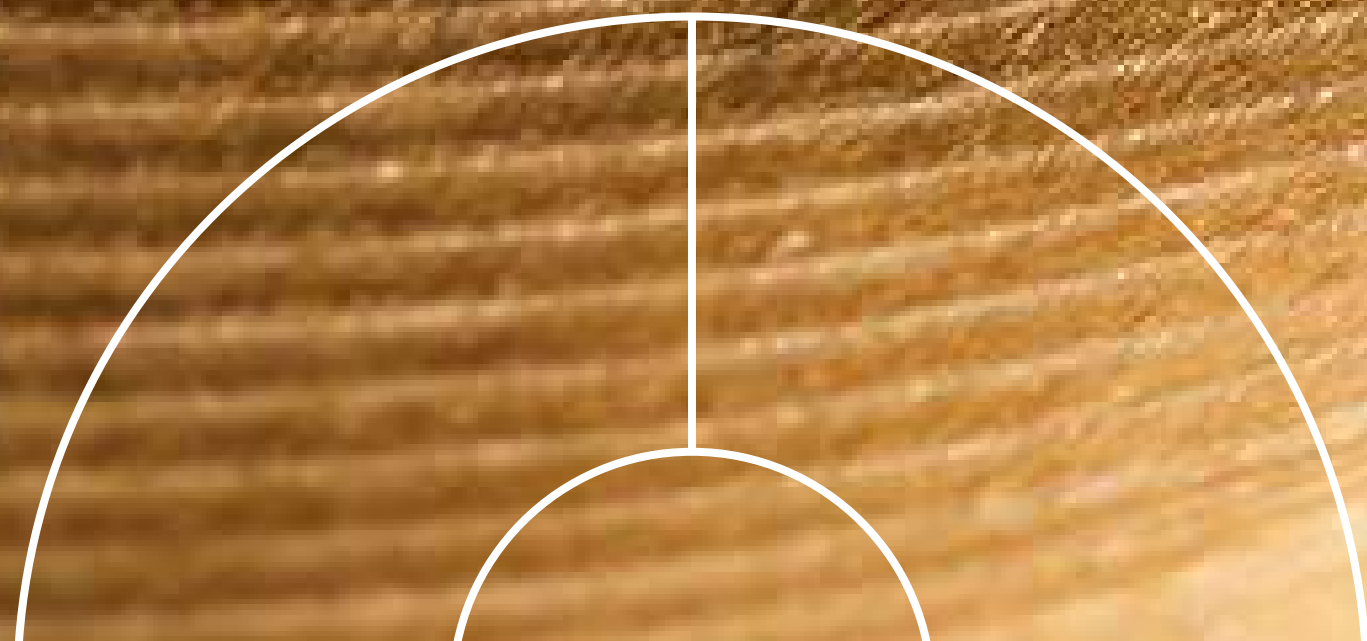


THE  
source  
II



# LIVE WELL WITH ALDAR

As one of the most trusted and recognised real estate lifestyle developers in the UAE, it's our duty to nurture wellbeing in every Abu Dhabi home. Which is why we do more than build properties.

We strive to shape communities that enrich people's lives, in homes that brim with health, happiness, and everything they love.



AED 11.2 BN  
REVENUE

AED 3.1 BN  
NET PROFIT

AED 7 BN  
ALDAR  
DEVELOPMENT  
REVENUE

AED 4.1 BN  
ALDAR  
INVESTMENT  
REVENUE

AED 14.4 BN  
DEVELOPMENT  
SALES

AED 11.3 BN  
13 COMPLETED  
ACQUISITIONS

AED 5.1 BN  
APOLLO  
TRANSACTION

AED 32 BN  
ASSETS UNDER  
MANAGEMENT

# THIS IS ABU DHABI

With its tranquil coastline, vibrant cultural scene,  
inspiring heritage and dynamic business landscape,  
Abu Dhabi is a city of balance. A place that offers  
people from all over the world a well-rounded lifestyle  
and the chance to achieve complete wellbeing.



# SAADIYAT ISLAND LIVING

Wellbeing begins here, on a natural island complete with turquoise waters, white-sand beaches and enriching experiences on every corner. For those looking for another kind of enlightenment, the inspiring Cultural District is home to Zayed National Museum, Guggenheim Abu Dhabi, Louvre Abu Dhabi and Saadiyat Grove. A lifestyle destination that is redefining the UAE's role in global culture and holistic health.





# A GROVE LIKE NO OTHER

Open your mind to inspiration at Saadiyat Grove. An ever-evolving, ever-invigorating destination at the heart of the island that makes pedigreed art and culture a part of life. Interactive artworks surround you, exquisite style is reflected through every window, and the world's most iconic collection of museums and galleries are yours to explore.



# ZAYED NATIONAL MUSEUM

The magnificent centrepiece of the Cultural District celebrates the life of our founding father and tells the story of the UAE. A precious link between ancient past and modern day.



IMAGE COURTESY OF ZAYED NATIONAL MUSEUM AND FOSTER + PARTNERS



IMAGE COURTESY OF GEHRY PARTNERS, LLP

# GUGGENHEIM ABU DHABI

The first museum of its kind in the region, with a vision to spark interest in contemporary art, and provide a powerful new creative platform for artists around the world.



# LOUVRE ABU DHABI

An architectural masterpiece and international icon,  
where treasures from near and far, past, present and  
future, are admired together under a rain of light.



# THE ABRAHAMIC FAMILY HOUSE

The first-ever interfaith community  
in the UAE, where three religious  
spaces are connected, to encourage  
acceptance between Christianity, Islam  
and Judaism.





## NATURAL HISTORY MUSEUM ABU DHABI

This is where the history of life on Earth is told through unique collections and exhibitions, while scientists tackle some of the biggest challenges facing the world today.



# SOUL BEACH, MAMSHA AL SAADIYAT

A new private beach facility on Abu Dhabi's stunning Saadiyat island. Soul beach is a 1km stretch of prime Saadiyat coastline, travel brochure views, and mesmerising blues.





THE  
source  
II

↑  
**Zaya Nurai Island**  
15 Min boat ride

■ SAADIYAT BEACH CLUB

■ SAADIYAT PUBLIC BEACH  
■ SAADIYAT BEACH GOLF CLUB

GUGGENHEIM  
ABU DHABI  
■

■ MAMSHA AL SAADIYAT

■ THE ST. REGIS SAADIYAT ISLAND RESORT

SAADIYAT GROVE ■

■ JAWAHER SAADIYAT

LOUVRE ABU DHABI ■

■ SHEIKH ZAYED  
NATIONAL  
MUSEUM

■ MANARAT AL SAADIYAT

CULTURAL  
DISTRICT

SAADIYAT ISLAND

MARINA  
DISTRICT

■ NYU ABU DHABI

ABU DHABI

■ THE BRIDGES

■ SARAYA

AL MARYAH  
ISLAND  
15 Min

■ REEM CENTRAL PARK

■ MEERA

■ BURJ  
MOHAMMED  
BIN RASHID

■ THE GATE &  
ARC TOWERS

■ WORLD  
TRADE CENTER

REEM ISLAND  
15 Min

→  
**Yas Island**  
15 Min

**Abu Dhabi Airport**  
20 Min

**Dubai**  
70 Min

■ KHALIDIYA  
VILLAGE

■ BANIYAS  
TOWERS

AL MAMOURA

←  
**Corniche Rd, Abu Dhabi**  
20 Min

■ EMIRATES PALACE

■ AL BATEEN  
PARK



# THE NEW HOME OF WELLNESS

Our goal is to enrich the lives of people in Abu Dhabi in as many ways as we can. Which is why we've made a new commitment to wellbeing; introducing a series of developments with amenities and services that embody wellness holistically. Because wellness isn't something you do; it's something you live.



CONNECT WITH SERENITY  
AND SPLENDOUR



# THE source II

## ALL IS WELL

The next step in your wellness journey is here,  
at The Source II. Invest in your wellbeing and  
a community right in the heart of Abu Dhabi's  
cultural district, with homes tailored to bring you  
tranquillity, harmony and serenity.



A COMMUNITY BUILT  
ON BALANCE



# FIND YOUR BALANCE

MIND



Take time and space to  
refocus your thoughts

BODY



Feel inspired to move  
and nourish your body

GROWTH



Feed your pursuits,  
passions and creativity

COMMUNITY



Connect with people  
who practice living well

# MEDITATION REFLEXOLOGY PATHWAYS

Take an invigorating journey through winding  
walkways bordered by scented blooms.



# INVIGORATION REVITALISING ROOMS

Begin each day with iconic inspiration and  
end with the perfect night's sleep, as you  
slip into serenity.



MIND

# FOCUS

## YOGA STUDIO

Channel your mental and physical  
energy on the mat.



# STRENGTH FITNESS HUB

Reach your personal goals in an  
environment designed to push you.



# RELAXATION

## MAJLIS TEPIDARIUM

Rest and relax between treatments, in a  
bespoke majlis lined with heated benches.



# RELAXATION

## SAUNA

Detox, destress and heal your body  
with this classic thermal treatment.





# INVIGORATION

## ICE POOL

Kickstart your metabolism or cool down after the sauna, with a plunge in the ice-cold pool.





## RECOVERY VITALITY POOL

Experience a deep tissue water massage that stimulates blood flow and relieves muscle pain.



## EXPERIENCE WALK

A unique hydrotherapy experience that reinforces the body's natural defences.





# REJUVENATION

## SALT STEAM AND SALT CAVE

Breathe in air or steam infused with salt to open the sinuses and boost your immune system.



## EXPERIENCE SHOWER

A unique hydrotherapy experience that reinforces the body's natural defences.



# INSPIRATION

## THINKING SPACE

Get inspired in our co-working and exhibition space, where work and art flow seamlessly.



GROWTH

# IMAGINATION PLAYROOM

Let little minds expand in a space that  
encourages independence.



GROWTH

# EXPLORATION COURTYARD

Open your mind to the endless  
possibilities waiting just outside.



COMMUNITY

# CONNECTION

## LOBBY LOUNGE

Be part of a vibrant community,  
where wellness is a state of being.

RECEPTION



COMMUNITY



# SHARING SOCIAL KITCHEN

Enjoy nourishing cuisine and conversation, in a  
space designed to bring people together.



COMMUNITY

# SMART & SUSTAINABLE

Designed responsibly, built from locally sourced materials and fitted with the latest sustainable features, your home will allow you to make a positive impact on the environment.

2 PEARL ESTIDAMA RATING



REDUCED CARBON EMISSIONS



GREEN BUILDING TECHNOLOGY



SUSTAINABLE MATERIALS



LOCALLY SOURCED MATERIALS



LOW-FLOW FIXTURES



TARGETTING WELL CERTIFICATION



EVERY INCH  
DESIGNED WITH YOUR  
WELLBEING IN MIND



WORLD-CLASS  
FACILITIES THAT  
ELEVATE YOUR  
DAY-TO-DAY





# AMENITIES

ICONIC VIEWS OVERLOOKING  
THE ZAYED NATIONAL MUSEUM



YOGA & MEDITATIONS ROOMS



INDOOR & OUTDOOR POOLS



SAUNA & SALT STEAM ROOM



COLD PLUNGE & VITALITY  
POOLS MAJLIS TEPIDARIUM



EXPERIENCE KNEIPP WALK, EXPERIENCE  
SHOWER, REFLEXOLOGY PATHS



SALT CAVE



COMMUNITY GYM



WELLNESS RETAIL AND DINING OPTIONS



LOBBY AND LIBRARY



COMMUNAL GARDEN  
& FARMING SPACES



CHILDREN'S PLAY AREA



WELLNESS CONCIERGE



SPA-INSPIRED BATHROOMS



CO-WORKING SPACES



SOCIAL KITCHENS



ACCESS TO THE CULTURAL DISTRICT

# EMBRACE THE ELEMENTS

Feel grounded in a biophilia-inspired apartment that overlooks Saadiyat Grove's dancing fountains, just a short walk from the island's calming white-sand, clear water beaches.



# ACHIEVE HARMONY IN THE HOME

Apartments at The Source II have been meticulously planned to enhance everyday life. With a choice of two colour schemes, as well as state-of-the-art features and exquisite finishings, your surroundings will never fail to lift your mood.

VIEWS OF ZAYED NATIONAL MUSEUM  
AND THE DANCING FOUNTAINS

◆  
AMBIENT LIGHTING

◆  
BEDROOMS DESIGNED FOR  
THE PERFECT NIGHT'S SLEEP

◆  
BUILT-IN WHITE GOODS





# FINISHES

## LIGHT SCHEME

### THROUGHOUT THE APARTMENT



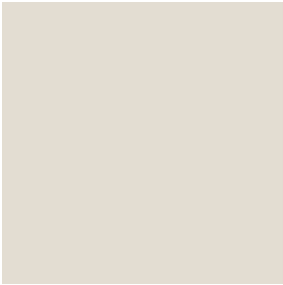
WALL TILE |  
SANIPEX-  
COEAM-LAGOS  
IVORY MATT



FLOOR |  
WOODLIKE  
PORCELAIN TILES



METAL DETAILS  
| BRUSHED  
BRITISH GOLD



WALLS |  
GENERAL PAINT

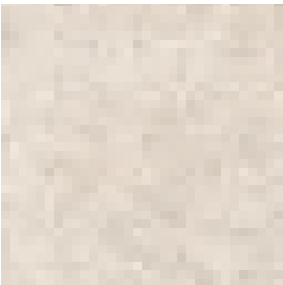


EXTERNAL DOOR |  
LAMINATE

### KITCHEN



GENERAL LOOK  
& FEEL



COUNTER TOP &  
BACKSPLASH |  
PORCELAIN



METAL DETAILS  
| BRUSHED  
NIKEL



CABINETS |  
LAMINATE

### BATHROOM



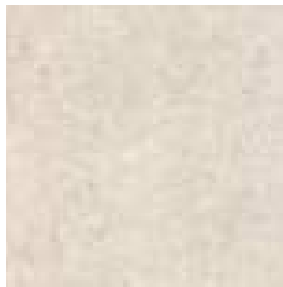
GLASS DOORS |  
TROUGHENED  
GLASS



CABINETS |  
LAMINATE



FLOOR TILES |  
PORCELAIN



SINK FINISH |  
TILE LOOK



MIXER & DETAILS  
| BRUSHED NIKEL

### CLOSET



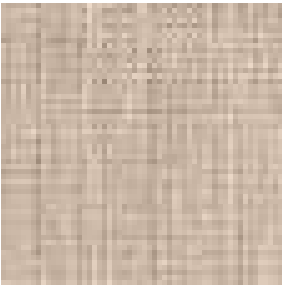
LED LIGHT  
DETAIL



CHABROS |  
NATURE BEIGE  
B116 MATTE



CLOSET DOORS  
| LAMINATE &  
TROUGHENETGLASS



INTERIOR |  
LINEN



# FINISHES

## DARK SCHEME

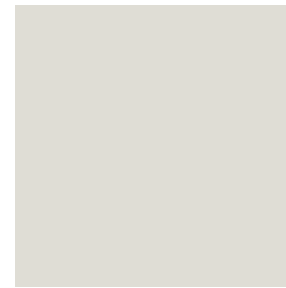
### THROUGHOUT THE APARTMENT



WALL TILE |  
MIRAGE-  
MOTLEY  
WEMBLEY MT03



FLOOR |  
WOODLIKE  
PORCELAIN TILES



VARNISH



WALLS |  
GENERAL PAINT

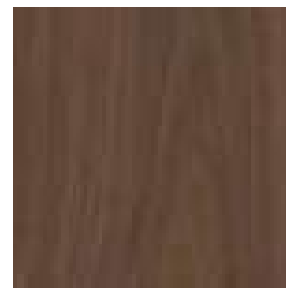


EXTERNAL DOOR |  
LAMINATE

### KITCHEN



GENERAL LOOK  
& FEEL



CABINETS |  
LAMINATE



COUNTER TOP &  
BACKSPLASH



METAL DETAILS  
| BRUSHED  
BRITISH GOLD

### BATHROOM



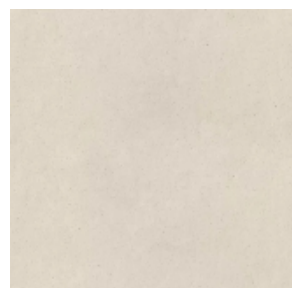
GLASS DOORS |  
TOUGHENED  
GLASS



CABINET FINISH  
| VENEERS



FLOOR TILES |  
PORCELAIN



FLOOR TILES |  
PORCELAIN

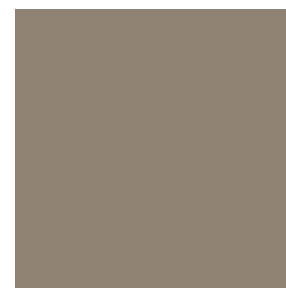


MIXER STYLE |  
BRUSHED BRONZE

### CLOSET



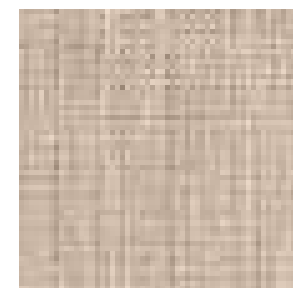
LED LIGHT  
DETAIL



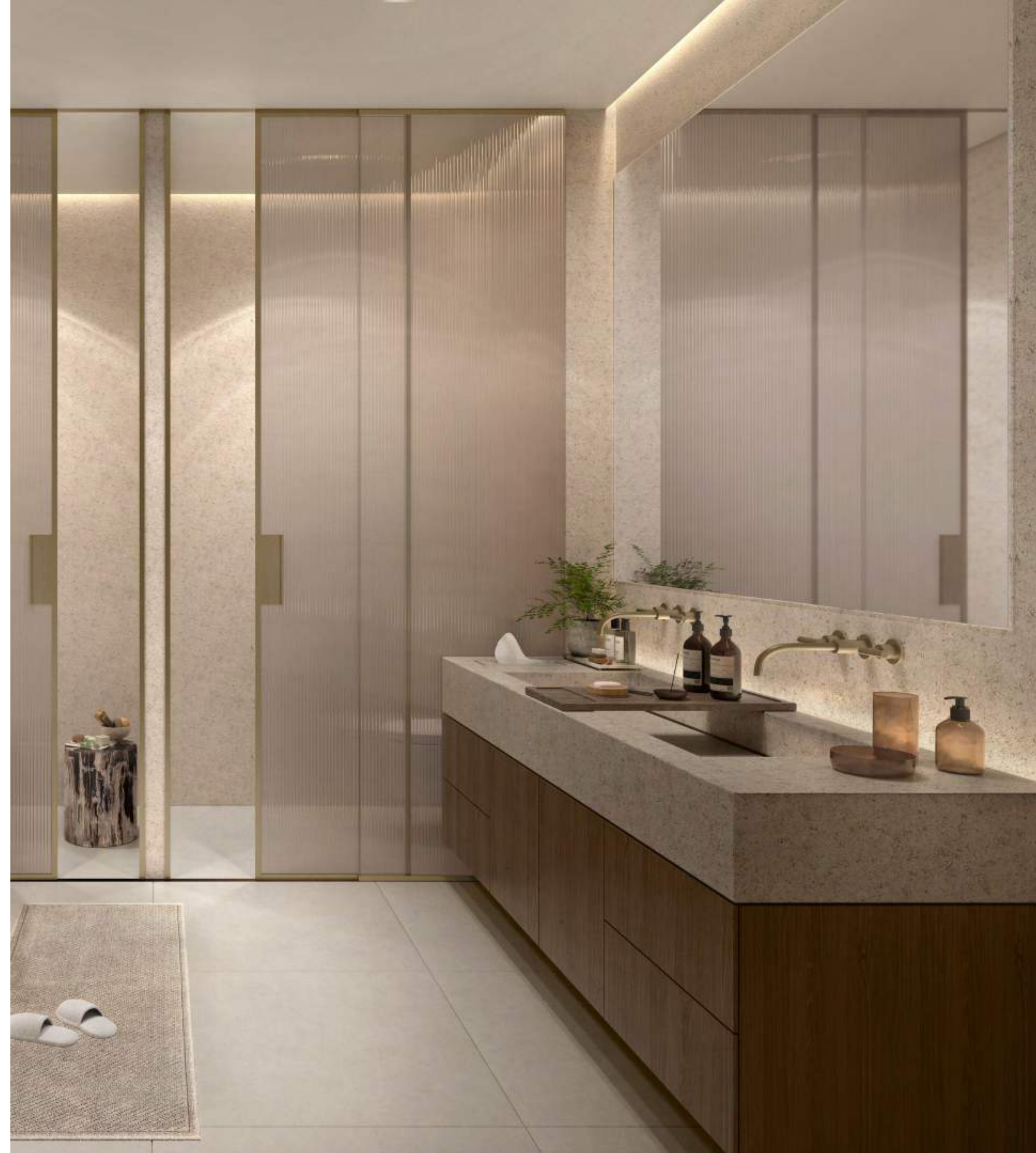
CHABROS |  
PIERRE DE LUNE  
P001 MATT



CLOSET DOORS  
| LAMINATE &  
TOUGHENETGLASS



INTERIOR |  
LINEN



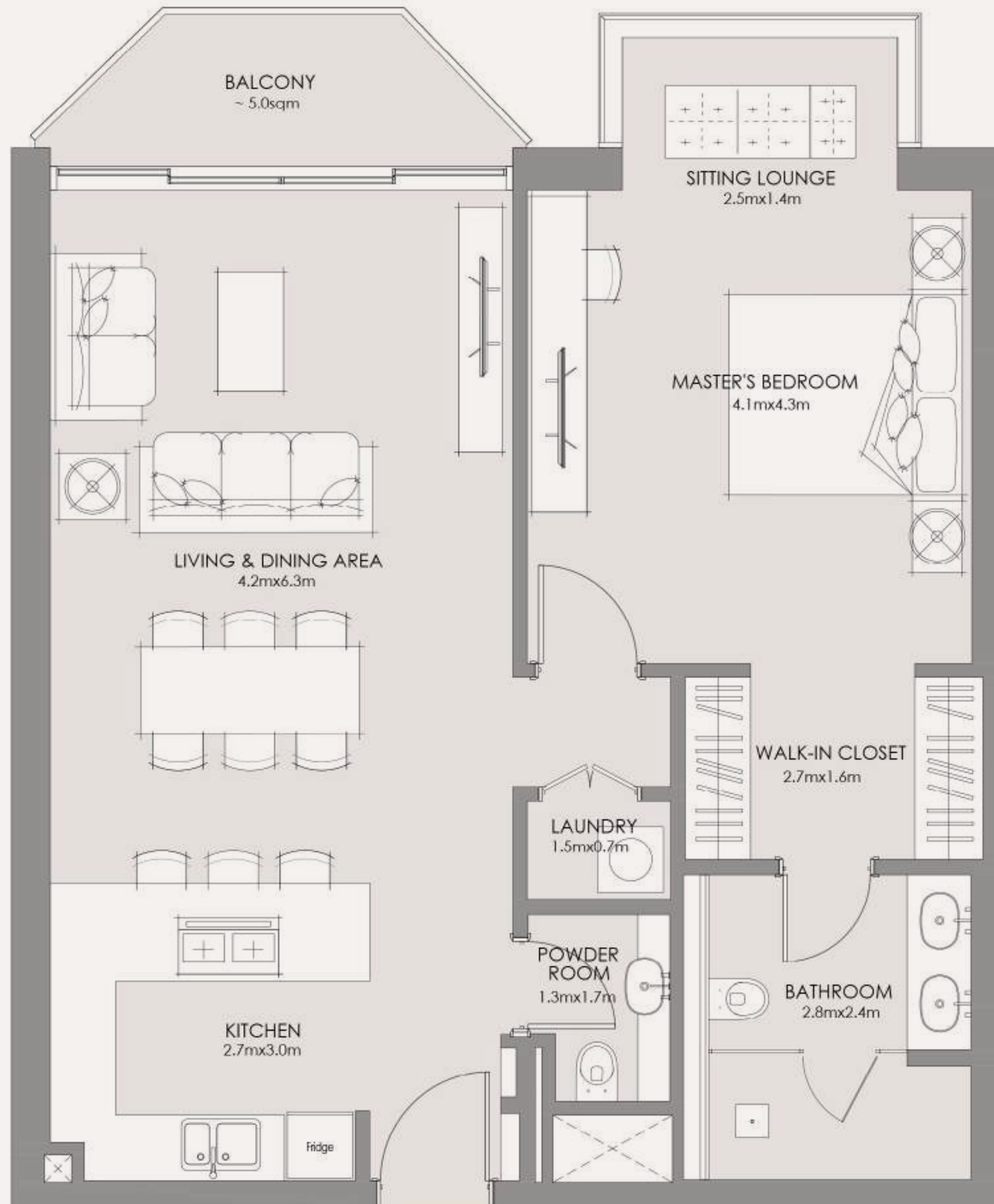




# THE SOURCE OF WELLNESS

Choose from modern 1, 2 and 3-bed  
apartments and start your journey to holistic  
health from the comfort of your home.

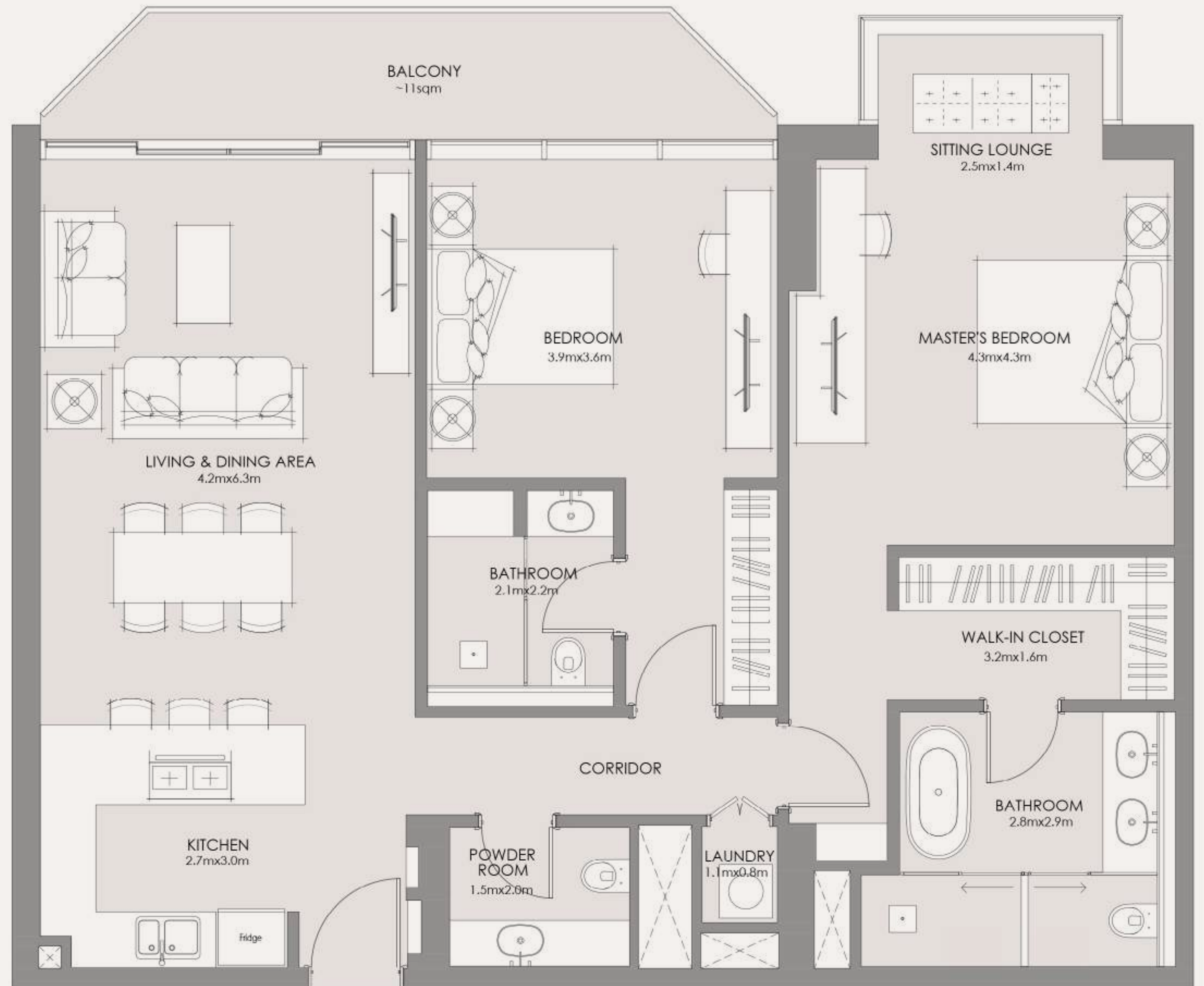


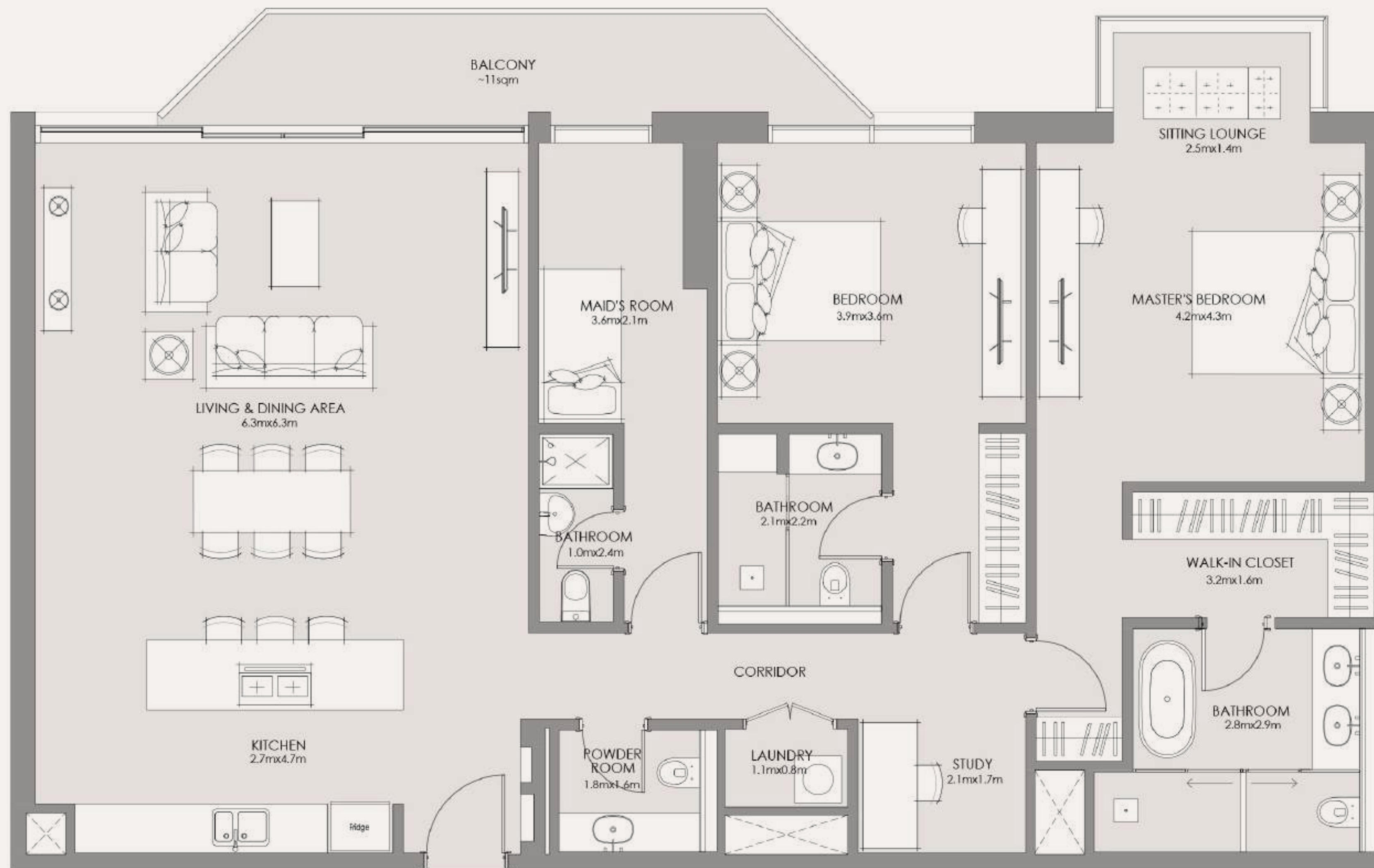


# I BEDROOM

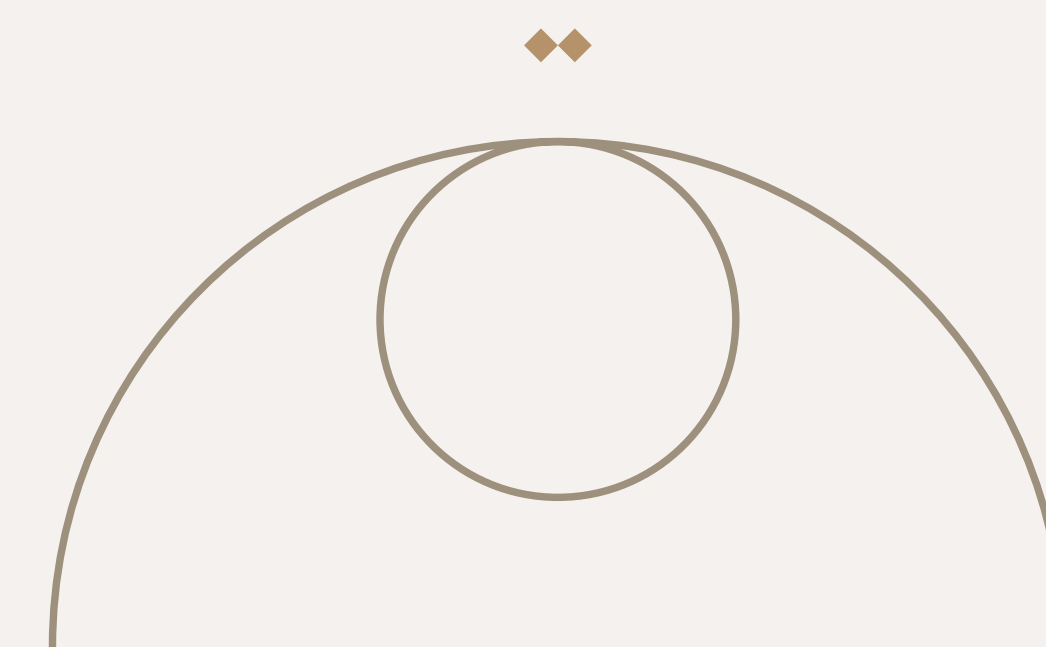


## 2 BEDROOM





## 2 BEDROOM + MAID



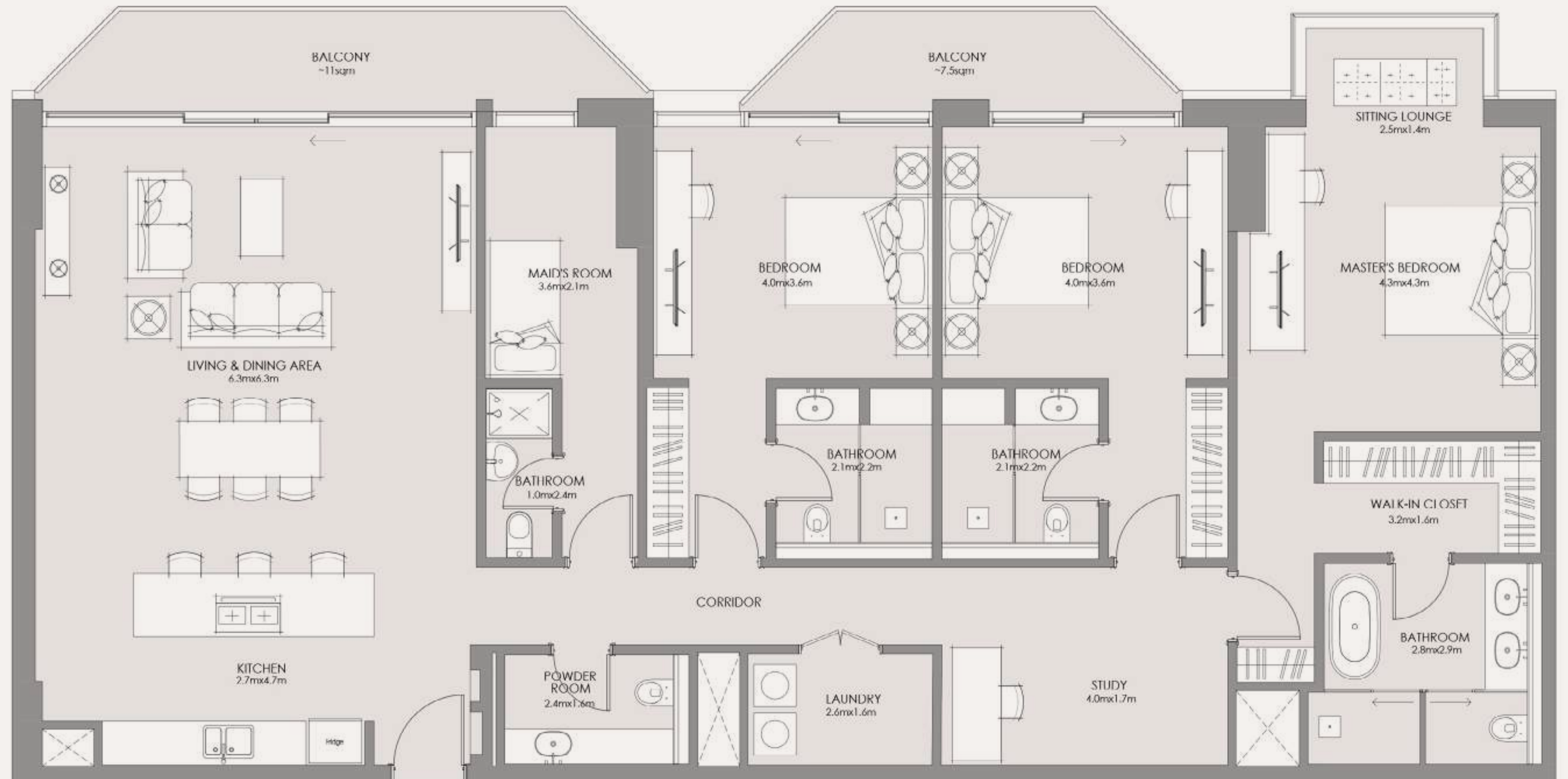
SPACE TO UNWIND  
OR ENTERTAIN

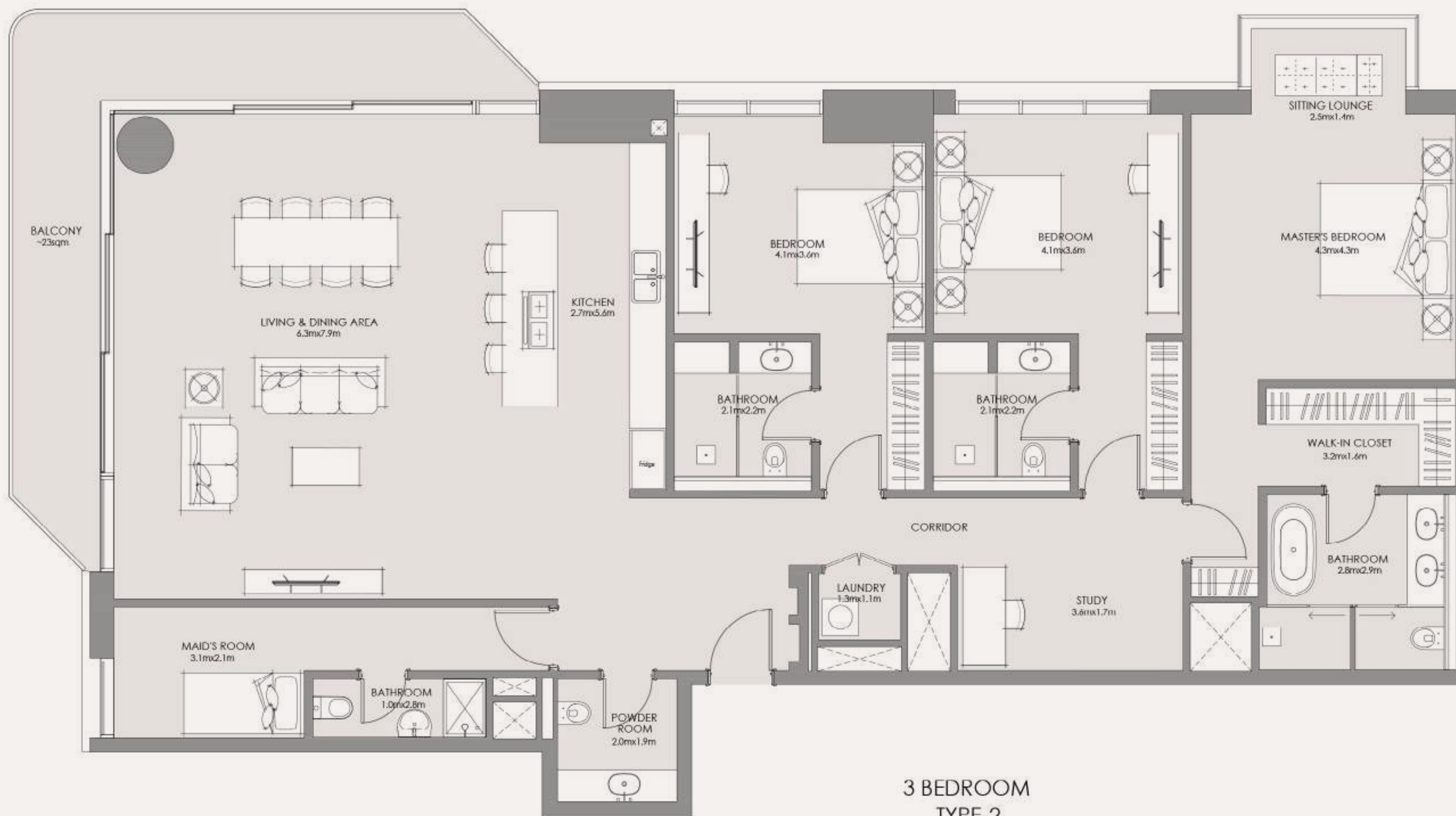


SLIP INTO 8 HOURS  
OF SERENITY

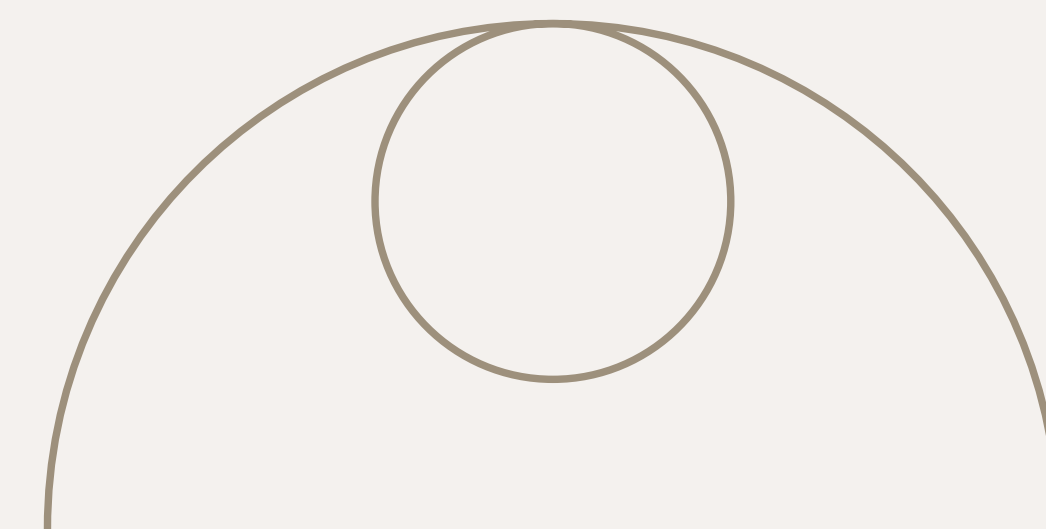


TYPE 1  
3 BEDROOM





TYPE 2  
3 BEDROOM



TYPE 3  
3 BEDROOM





# PLANNED FOR LIVING WELL

Explore your unique apartment retreat,  
thoughtfully designed to enhance every day.



FLOORPLATE  
LEVEL 01



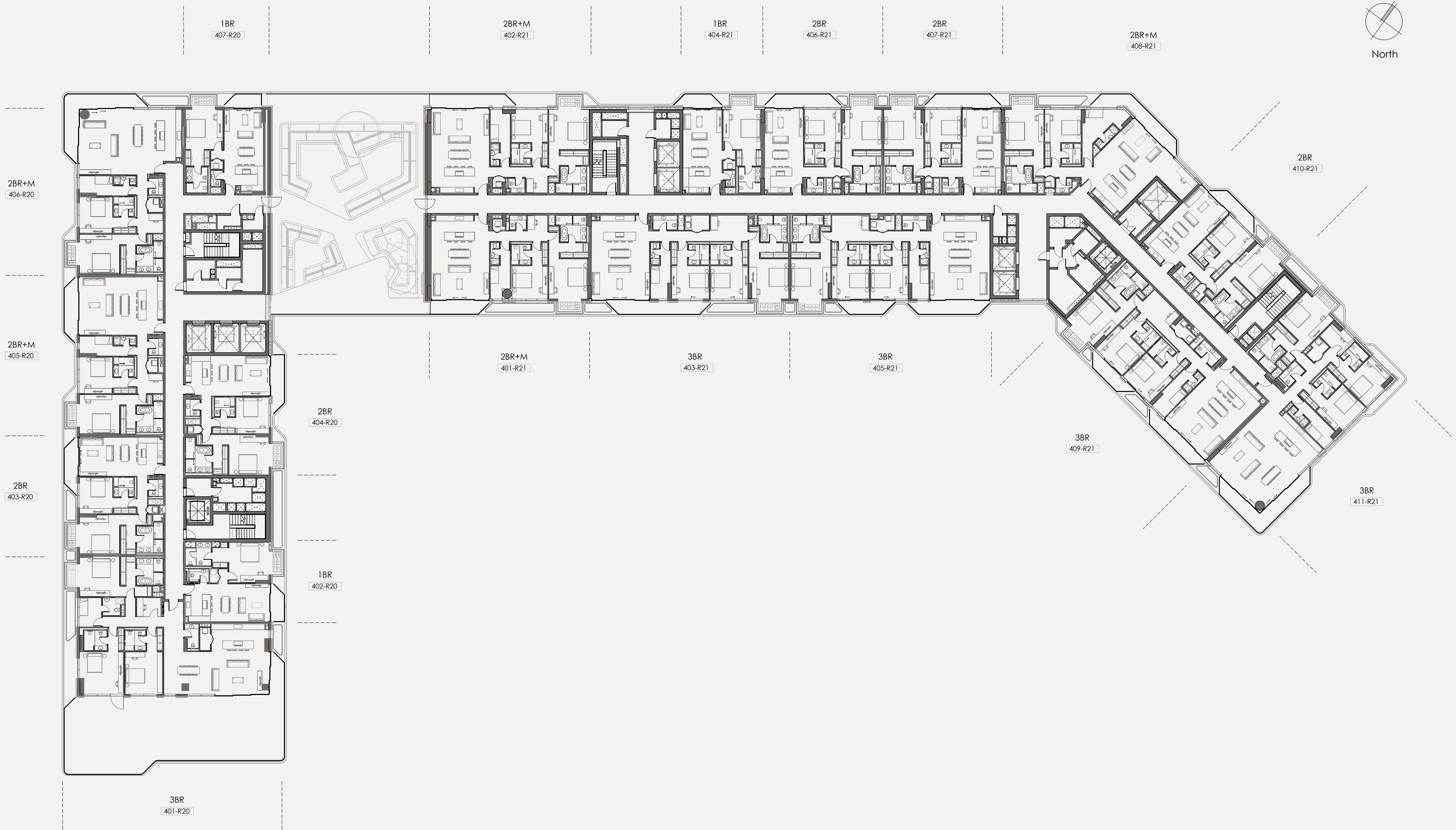
FLOORPLATE  
LEVEL 02



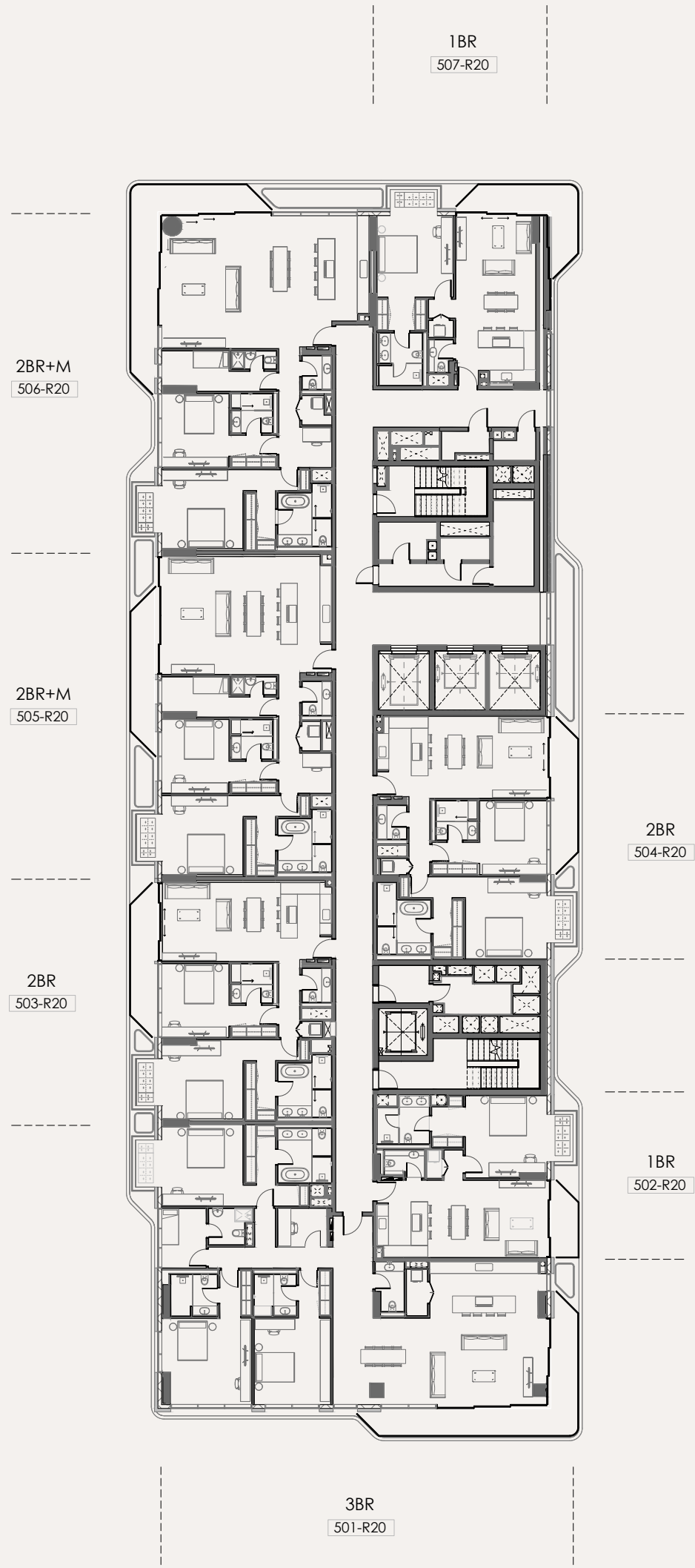
FLOORPLATE  
LEVEL 03



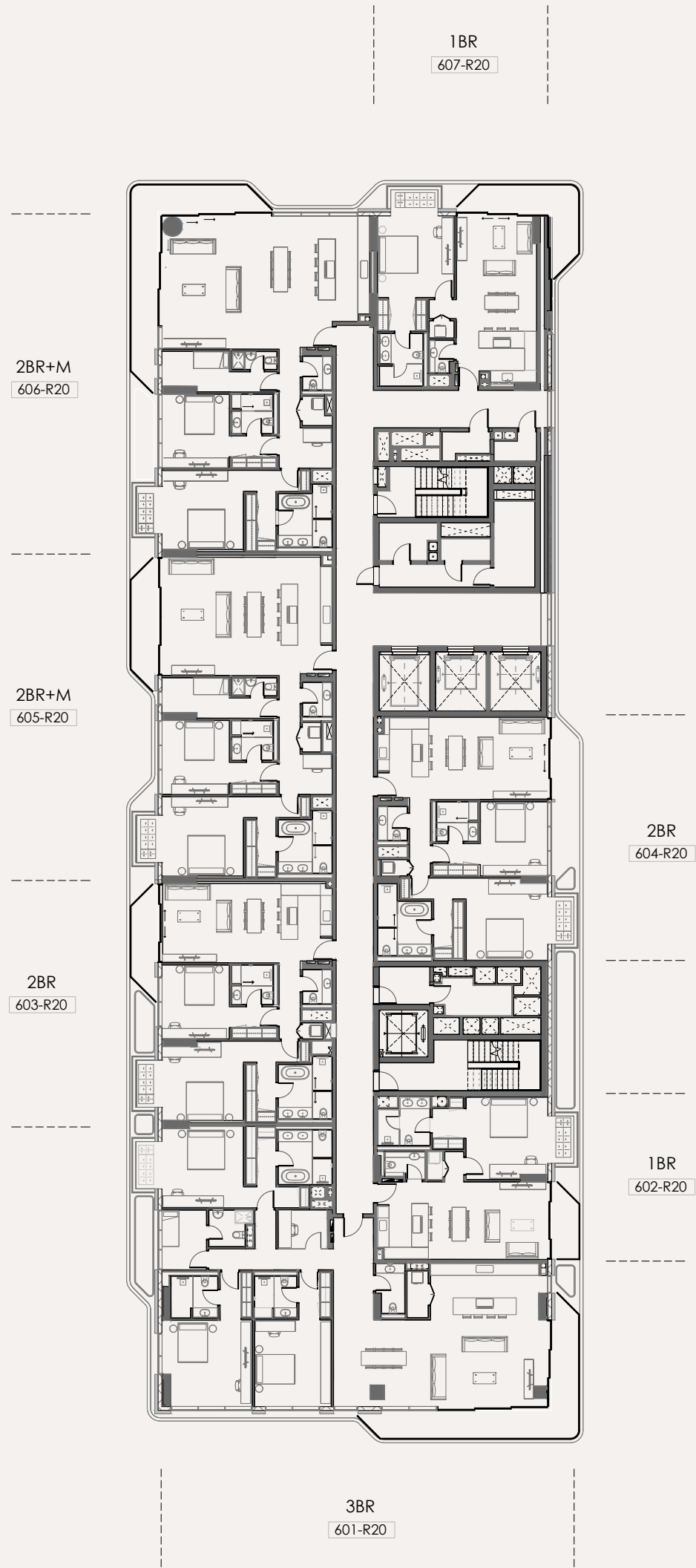
FLOORPLATE  
LEVEL 04



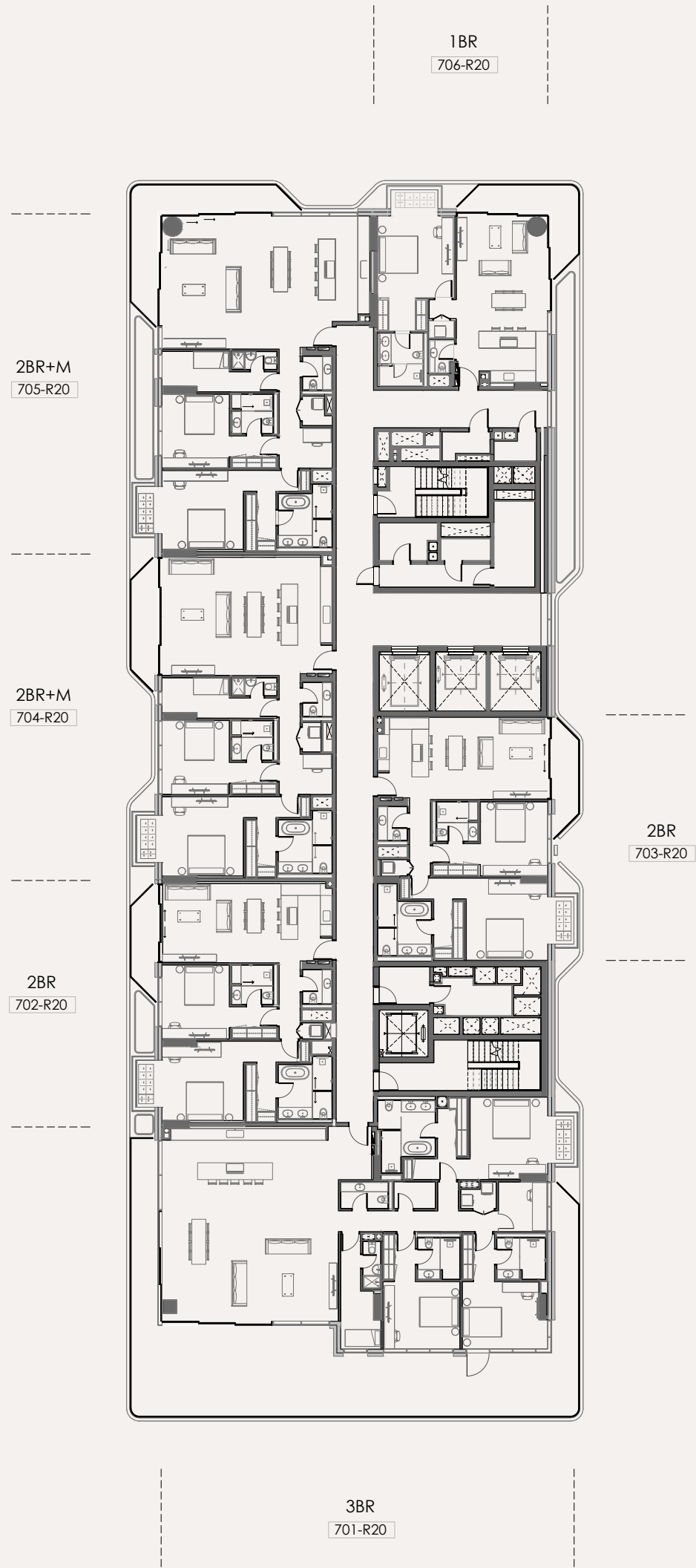
FLOORPLATE  
LEVEL 05



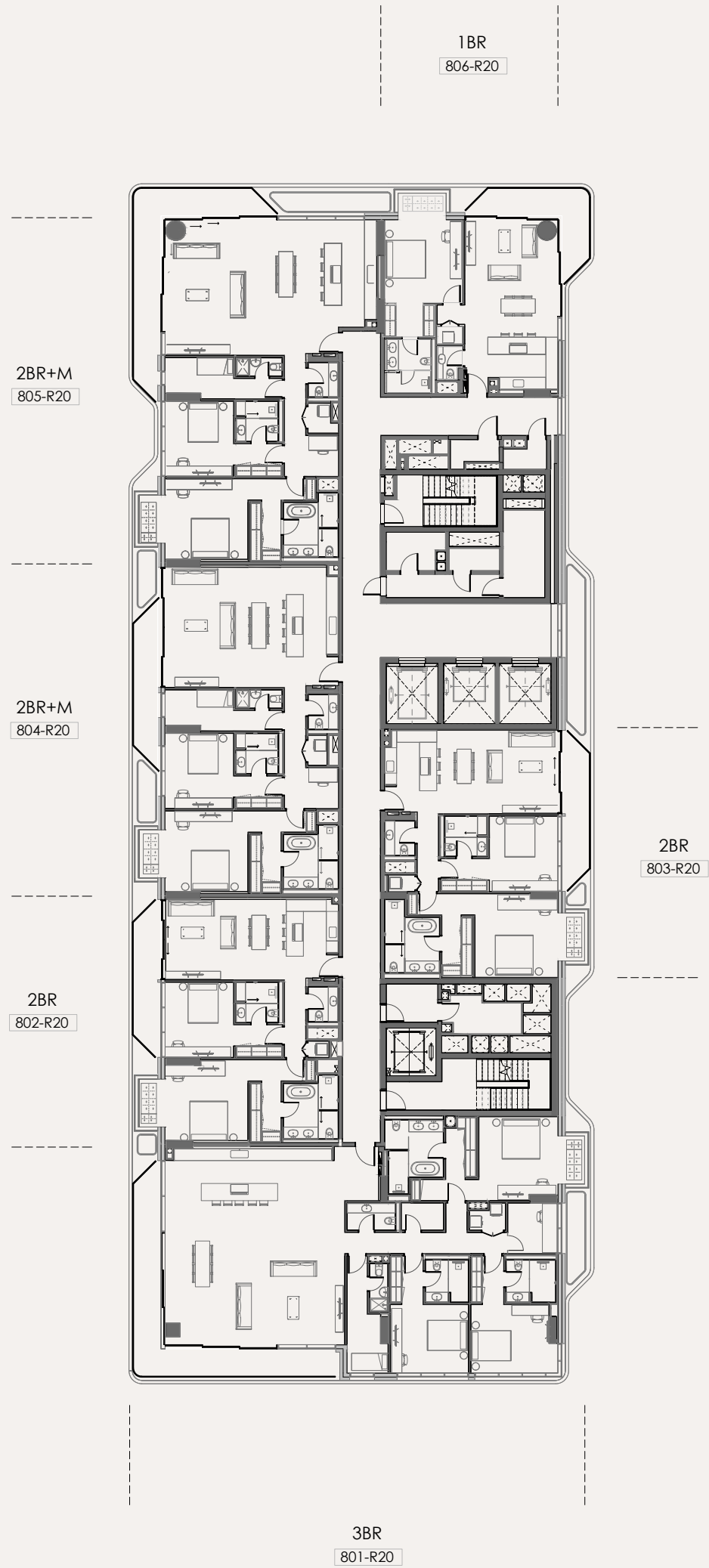
FLOORPLATE  
LEVEL 06



FLOORPLATE  
LEVEL 07



FLOORPLATE  
LEVEL 08



YOUR TRANQUIL RETREAT  
AT THE HEART OF IT ALL



AN INVIGORATING VIEW  
RISES TO MEET YOU



MINUTES FROM SAADIYAT  
GOLF CLUB AND THE LURE  
OF THE LUSH FAIRWAY



An aerial photograph of the ocean with several waves visible. The water is a deep blue-green color, and the waves are breaking, creating white foam. The text is overlaid in a white, serif font.

INHALE.

EXHALE.

ALL IS WELL



ALDAR.COM  
800 ALDAR