



ALA

RESIDENCE

AL REEM ISLAND, ABU DHABI

Object 1



AL REEM ISLAND, ABU DHABI

Building Description:

B+G+2P+17+R

Anticipated Completion: Q4 2028

A1LA RESIDENCE is a boutique sanctuary where modern luxury meets the quiet poetry of moonlit living, a boutique home for people who seek beauty that feels effortless, softness that feels powerful, and luxury that feels human. Inspired by the meaning of “Ayla” — a soft celestial glow — the residence is defined by light, serenity, and refined femininity.

Floor Plans

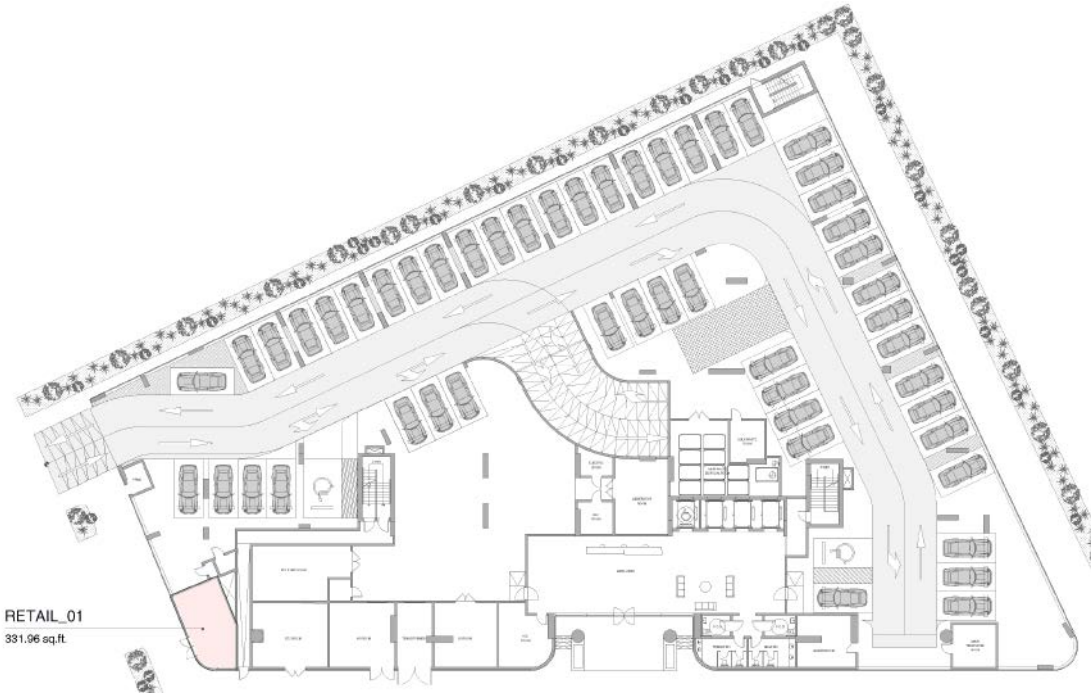


GROUND FLOOR
RETAIL

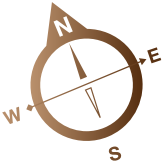


THE GATE DISTRICT

AL FAY PARK



SORBONNE UNIVERSITY ABU DHABI



AL REEM ISLAND CANAL

Disclaimer: all pictures, plans, layouts, information, data and details included in this brochure are indicative only may change at any time up to the final "as built" status in accordance with the final designs of the project, regulatory approvals and planning permissions

FLOOR 1

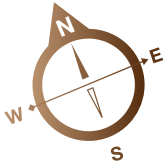


THE GATE DISTRICT

AL FAY PARK



SORBONNE UNIVERSITY ABU DHABI



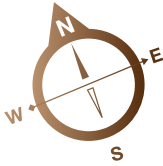
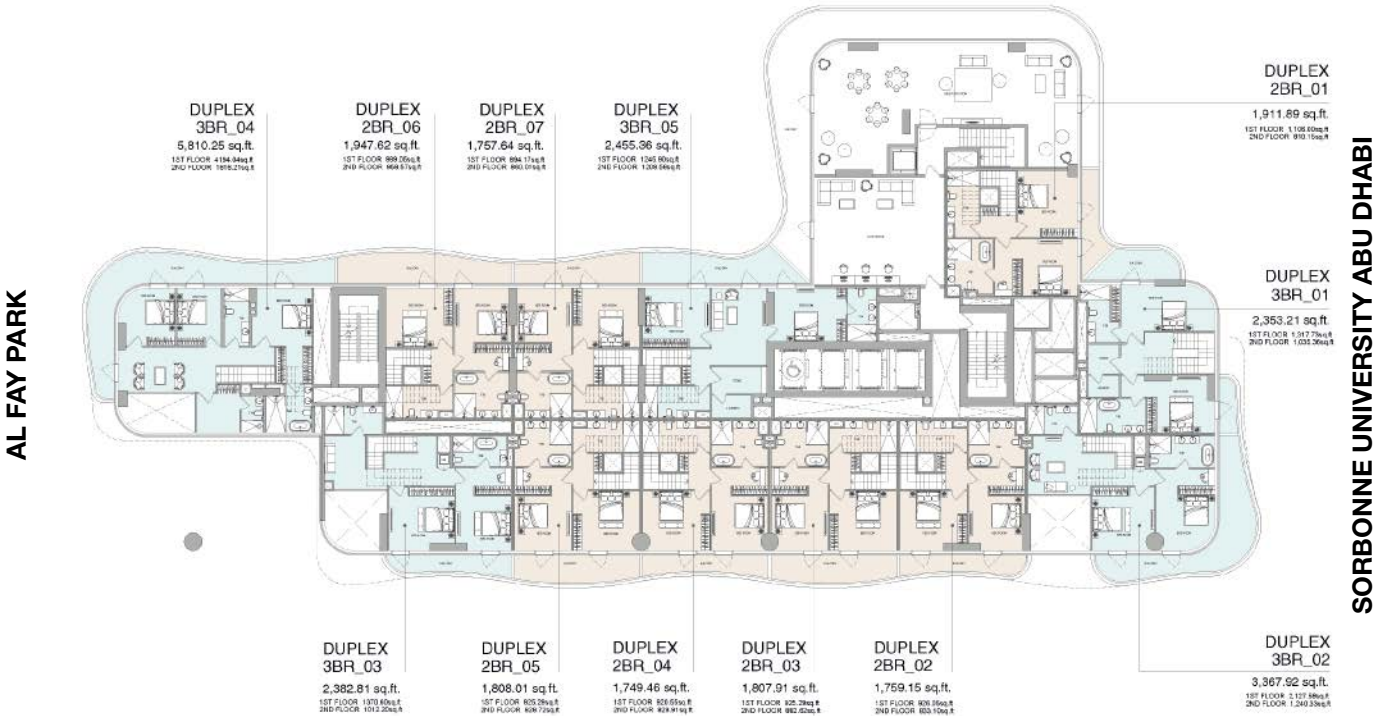
AL REEM ISLAND CANAL

Disclaimer: all pictures, plans, layouts, information, data and details included in this brochure are indicative only may change at any time up to the final "as built" status in accordance with the final designs of the project, regulatory approvals and planning permissions

FLOOR 2



THE GATE DISTRICT



AL REEM ISLAND CANAL

Disclaimer: all pictures, plans, layouts, information, data and details included in this brochure are indicative only may change at any time up to the final "as built" status in accordance with the final designs of the project, regulatory approvals and planning permissions

TYPICAL 01 FLOOR

FLOOR: 3, 4



THE GATE DISTRICT

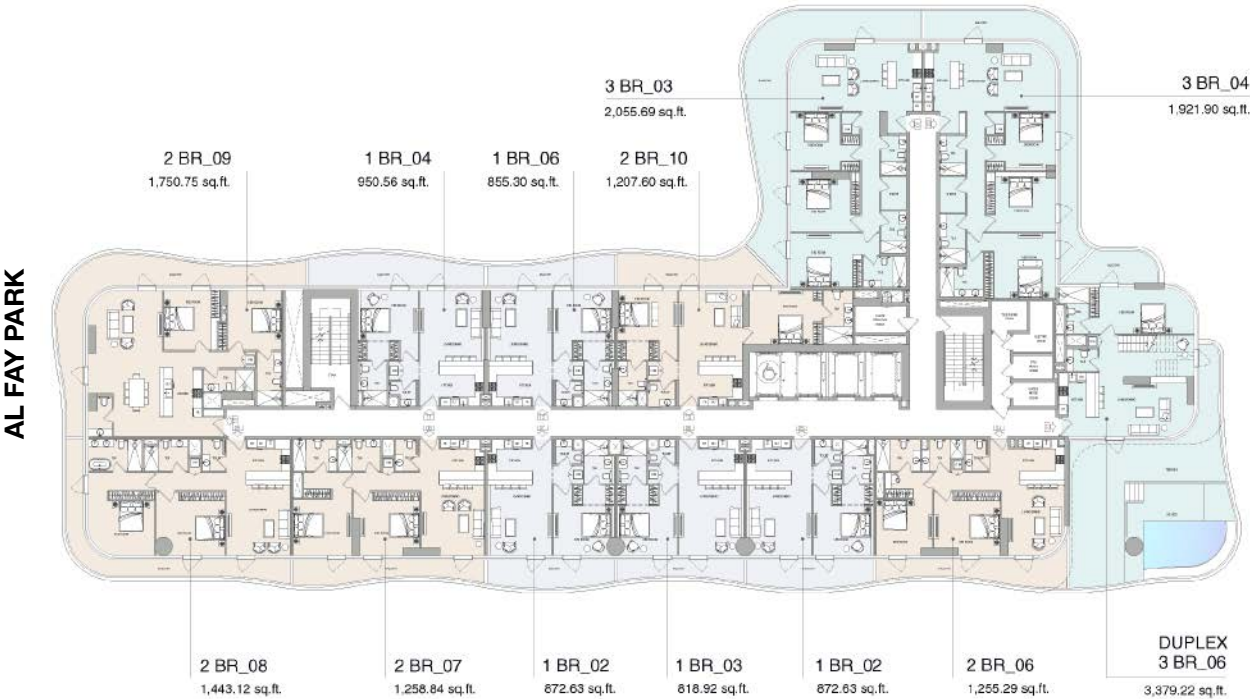


Disclaimer: all pictures, plans, layouts, information, data and details included in this brochure are indicative only may change at any time up to the final "as built" status in accordance with the final designs of the project, regulatory approvals and planning permissions

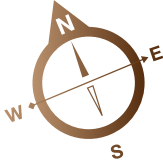
FLOOR 5



THE GATE DISTRICT



SORBONNE UNIVERSITY ABU DHABI



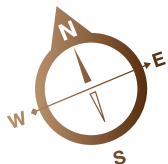
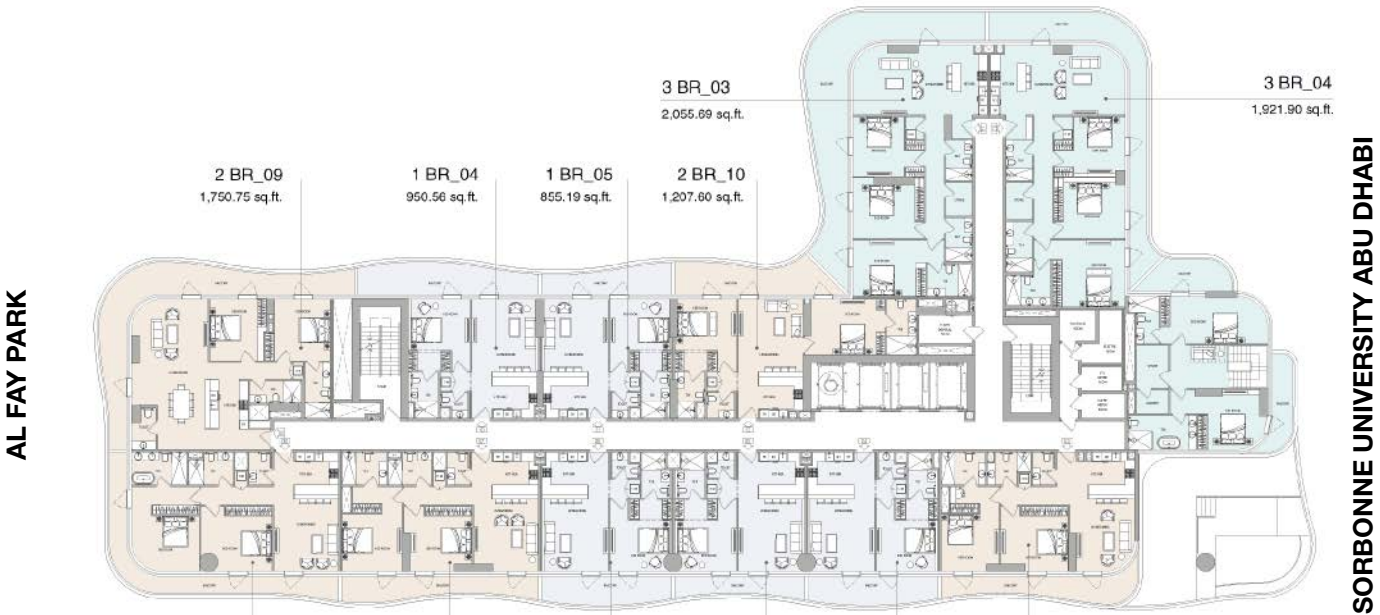
AL REEM ISLAND CANAL

Disclaimer: all pictures, plans, layouts, information, data and details included in this brochure are indicative only may change at any time up to the final "as built" status in accordance with the final designs of the project, regulatory approvals and planning permissions

FLOOR 6



THE GATE DISTRICT



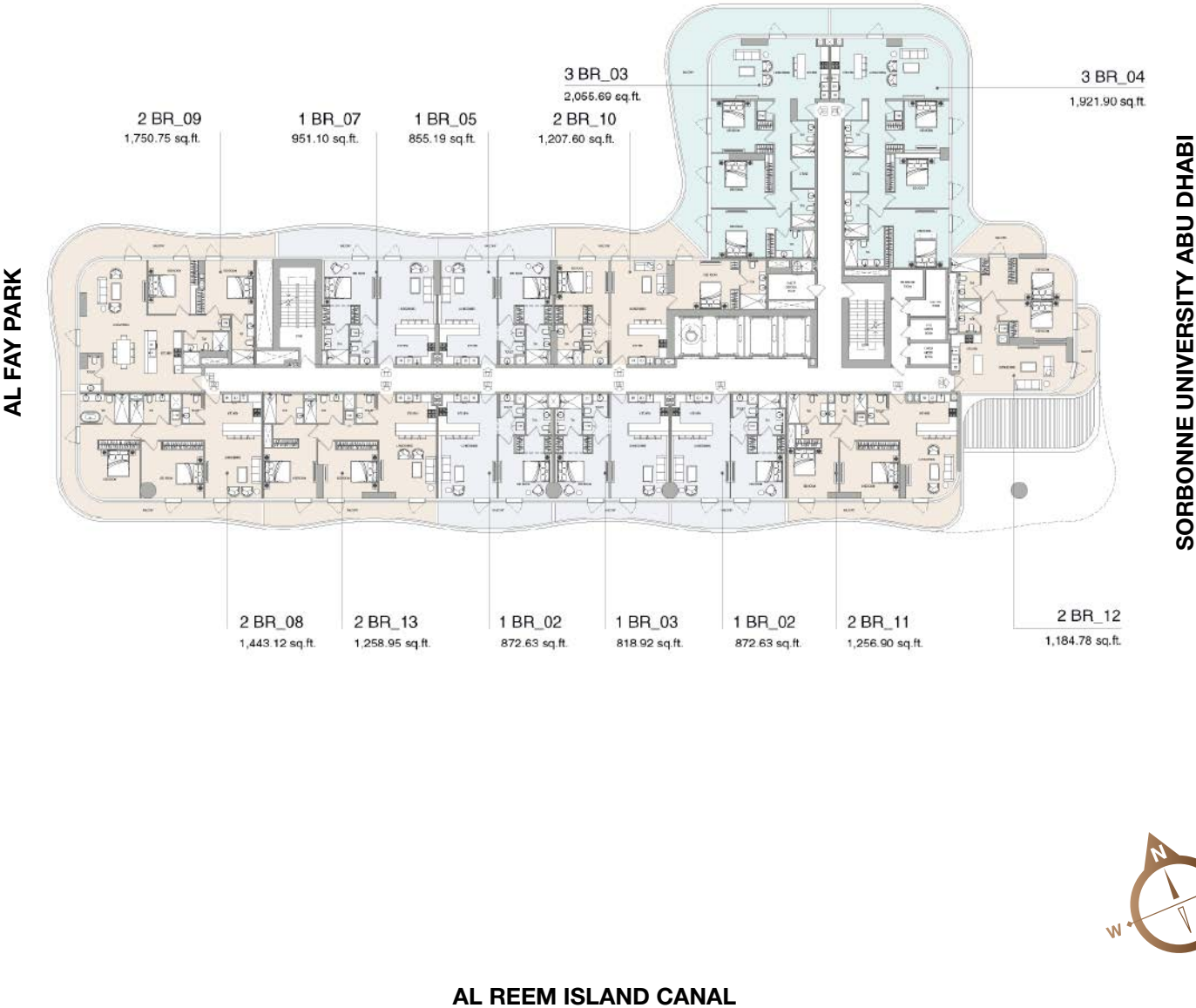
AL REEM ISLAND CANAL

Disclaimer: all pictures, plans, layouts, information, data and details included in this brochure are indicative only may change at any time up to the final "as built" status in accordance with the final designs of the project, regulatory approvals and planning permissions

FLOOR 7



THE GATE DISTRICT

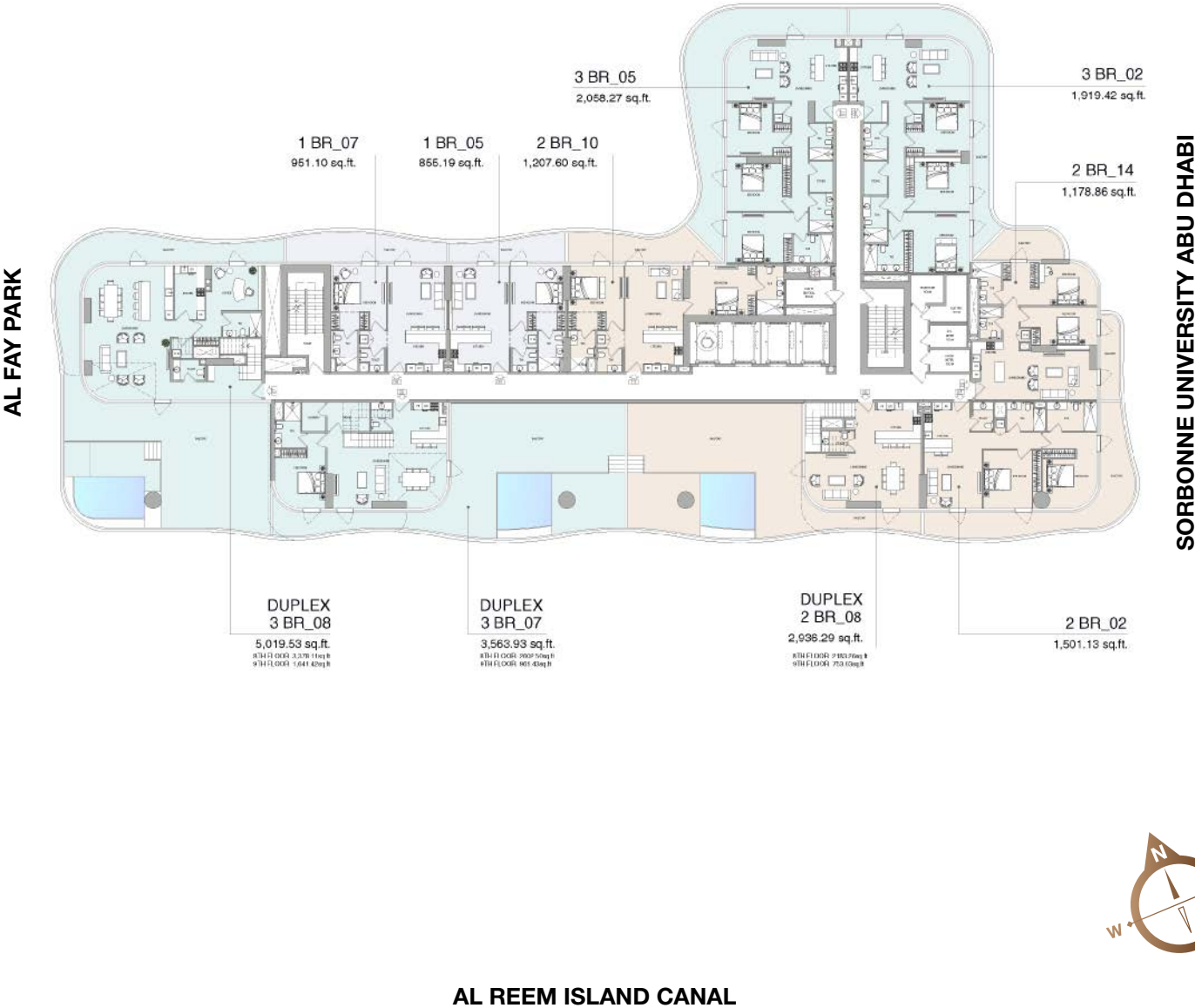


Disclaimer: all pictures, plans, layouts, information, data and details included in this brochure are indicative only may change at any time up to the final "as built" status in accordance with the final designs of the project, regulatory approvals and planning permissions

FLOOR 8



THE GATE DISTRICT

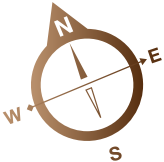
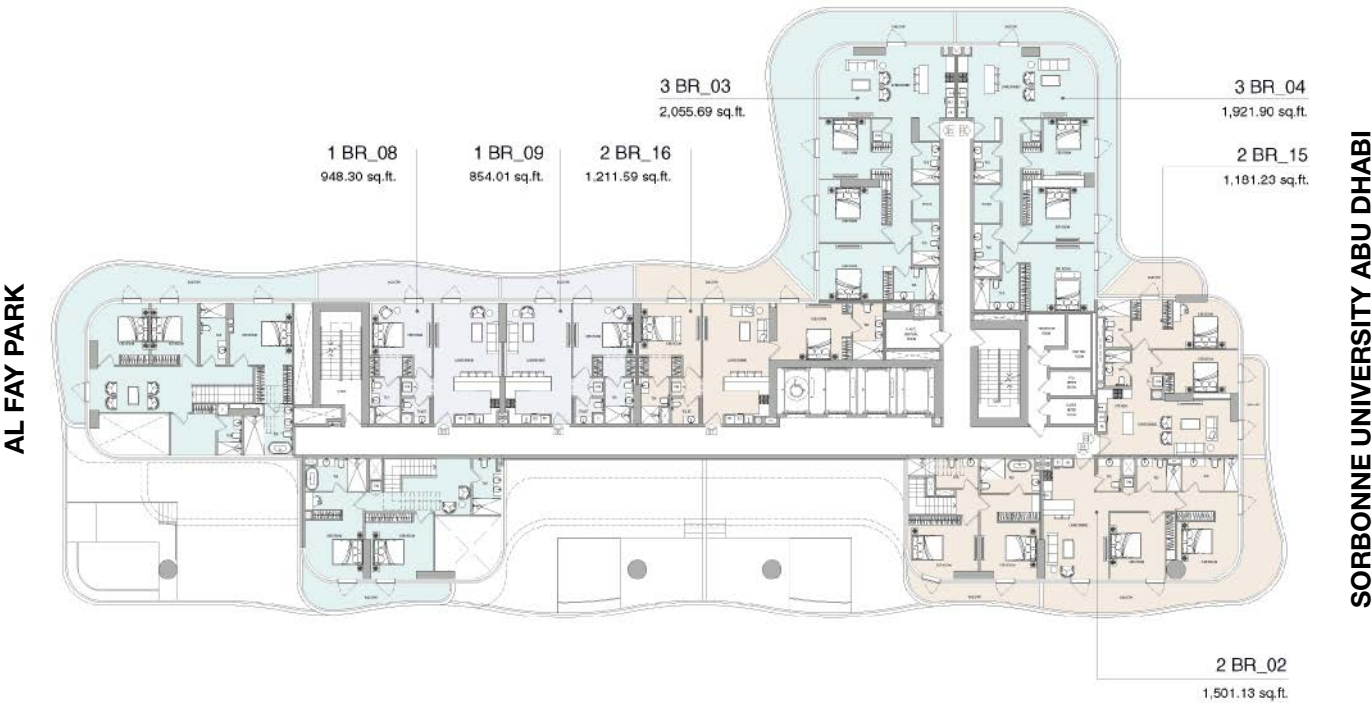


Disclaimer: all pictures, plans, layouts, information, data and details included in this brochure are indicative only may change at any time up to the final "as built" status in accordance with the final designs of the project, regulatory approvals and planning permissions

FLOOR 9



THE GATE DISTRICT



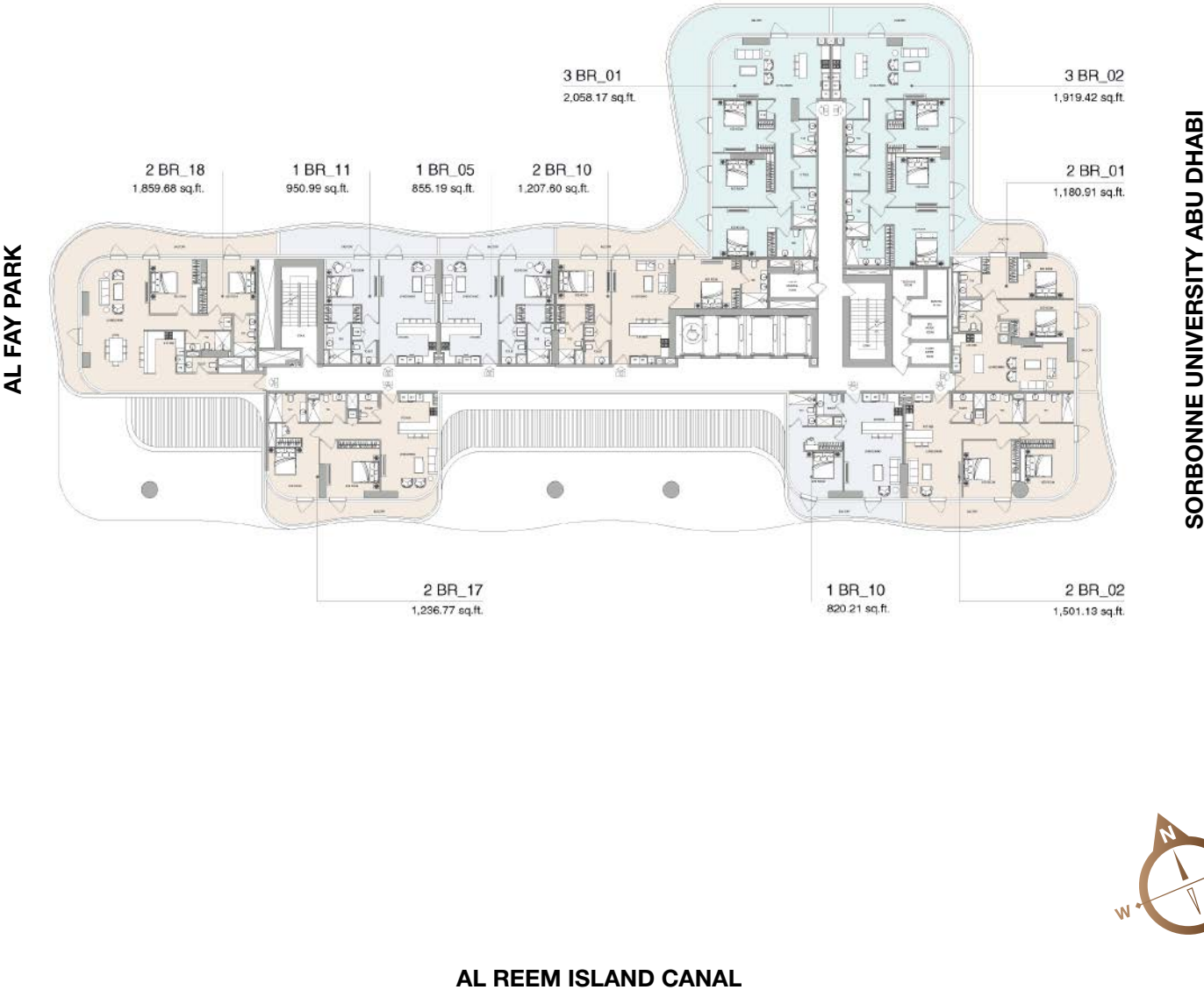
AL REEM ISLAND CANAL

Disclaimer: all pictures, plans, layouts, information, data and details included in this brochure are indicative only may change at any time up to the final "as built" status in accordance with the final designs of the project, regulatory approvals and planning permissions

FLOOR 10



THE GATE DISTRICT

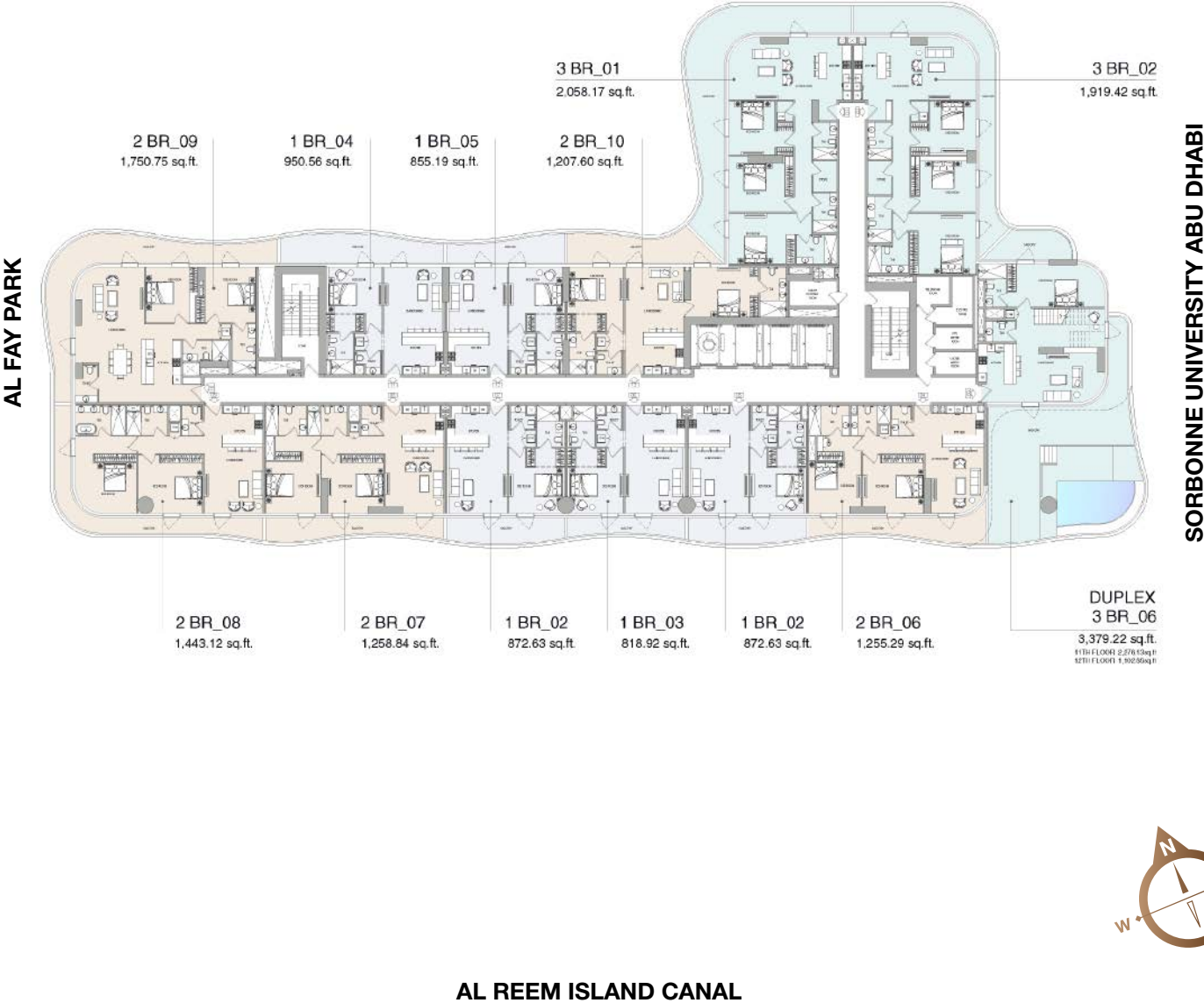


Disclaimer: all pictures, plans, layouts, information, data and details included in this brochure are indicative only may change at any time up to the final "as built" status in accordance with the final designs of the project, regulatory approvals and planning permissions

FLOOR 11



THE GATE DISTRICT



Disclaimer: all pictures, plans, layouts, information, data and details included in this brochure are indicative only may change at any time up to the final "as built" status in accordance with the final designs of the project, regulatory approvals and planning permissions

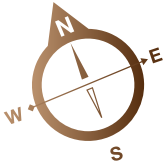
FLOOR 12



THE GATE DISTRICT

AL FAY PARK

SORBONNE UNIVERSITY ABU DHABI



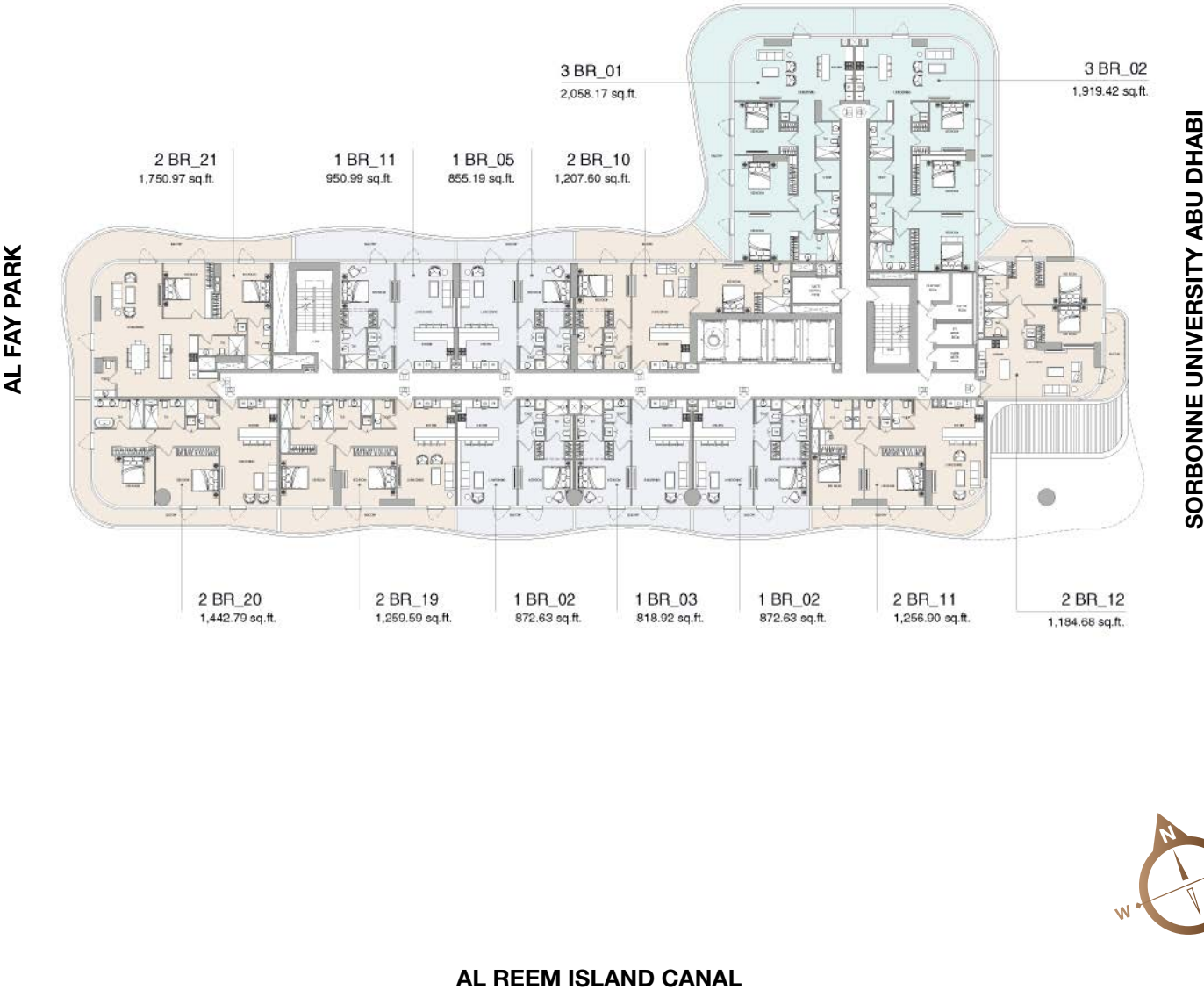
AL REEM ISLAND CANAL

Disclaimer: all pictures, plans, layouts, information, data and details included in this brochure are indicative only may change at any time up to the final "as built" status in accordance with the final designs of the project, regulatory approvals and planning permissions

FLOOR 13



THE GATE DISTRICT

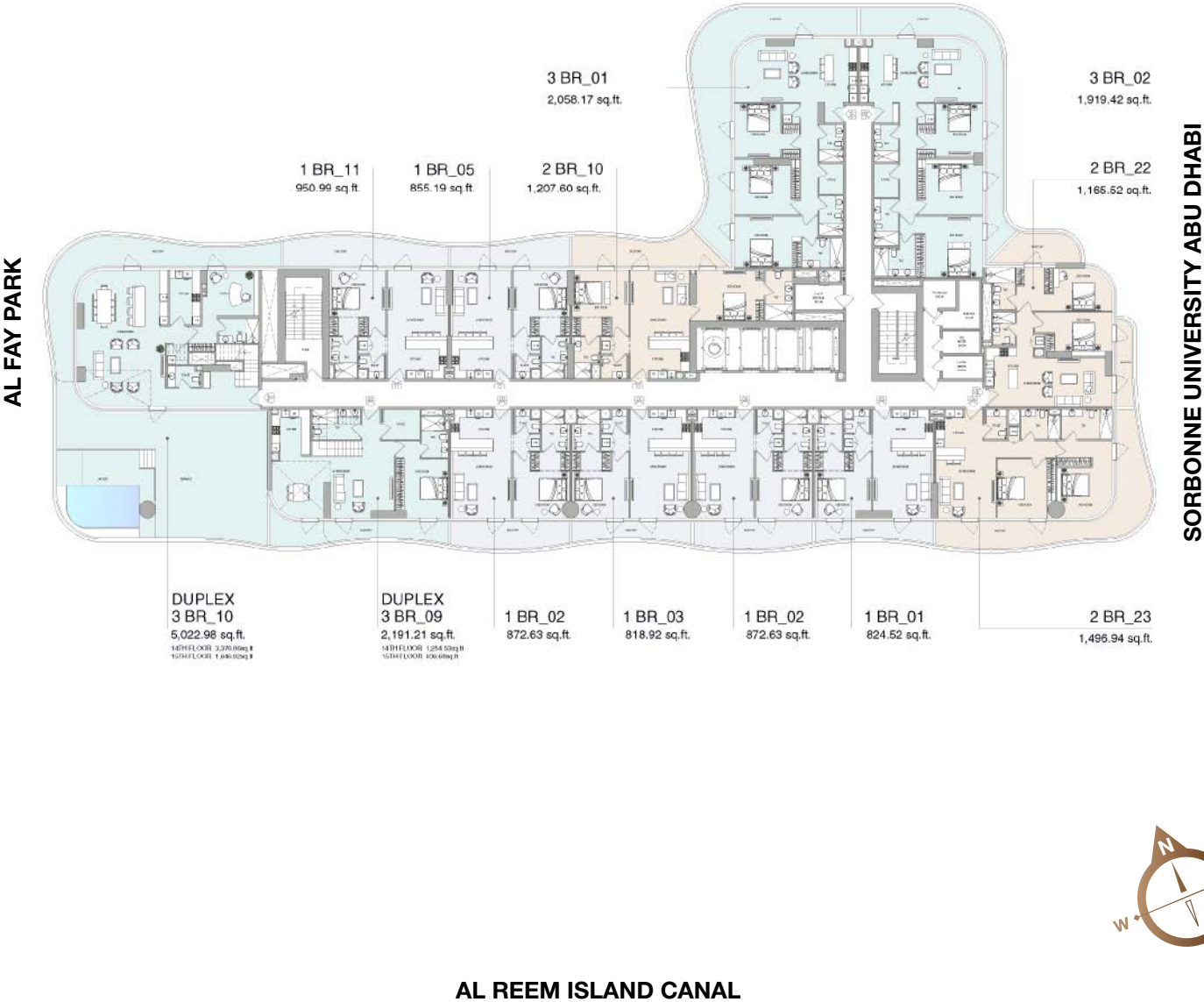


Disclaimer: all pictures, plans, layouts, information, data and details included in this brochure are indicative only may change at any time up to the final "as built" status in accordance with the final designs of the project, regulatory approvals and planning permissions

FLOOR 14



THE GATE DISTRICT

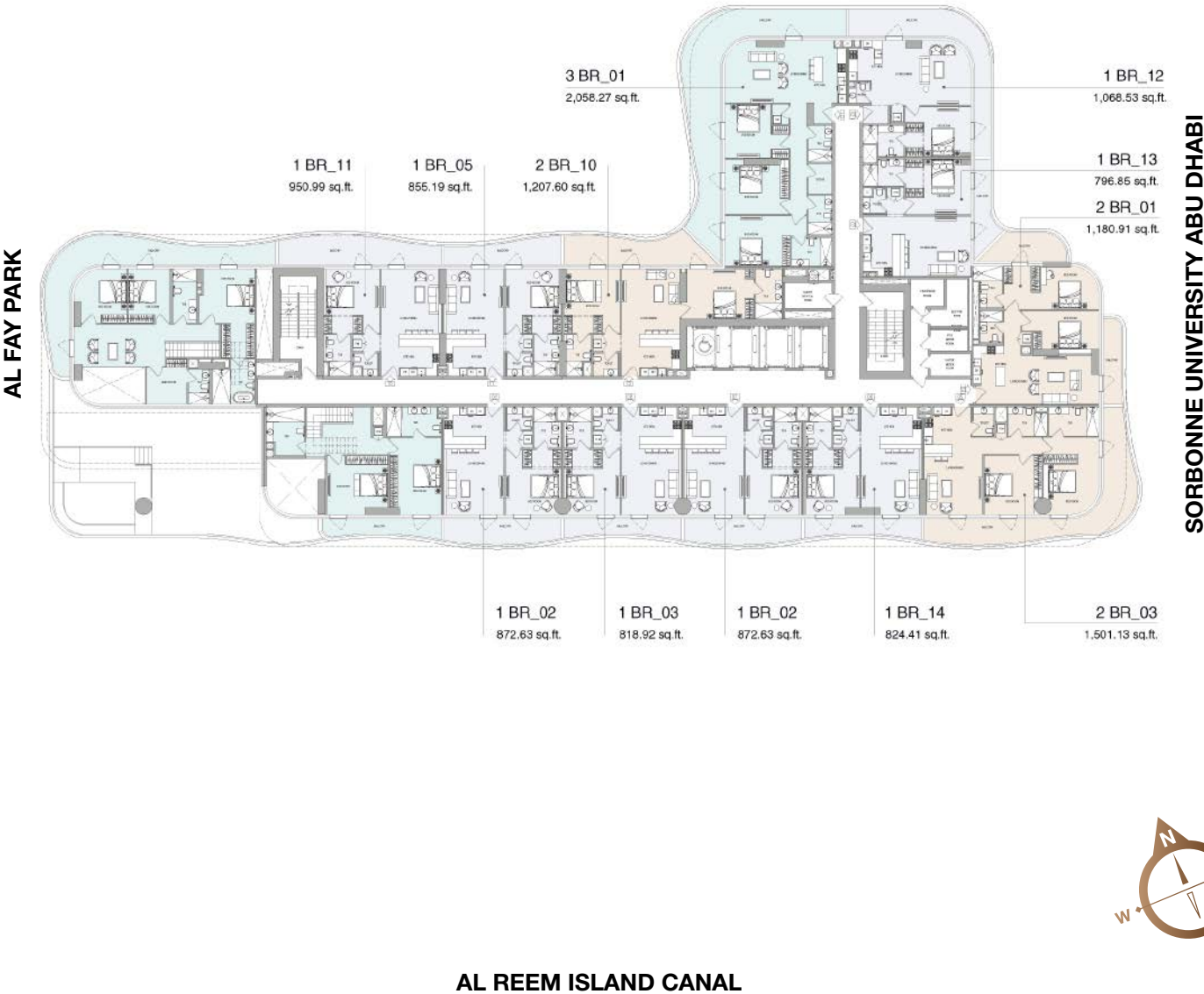


Disclaimer: all pictures, plans, layouts, information, data and details included in this brochure are indicative only may change at any time up to the final "as built" status in accordance with the final designs of the project, regulatory approvals and planning permissions

FLOOR 15



THE GATE DISTRICT

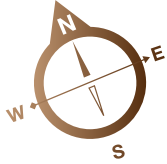
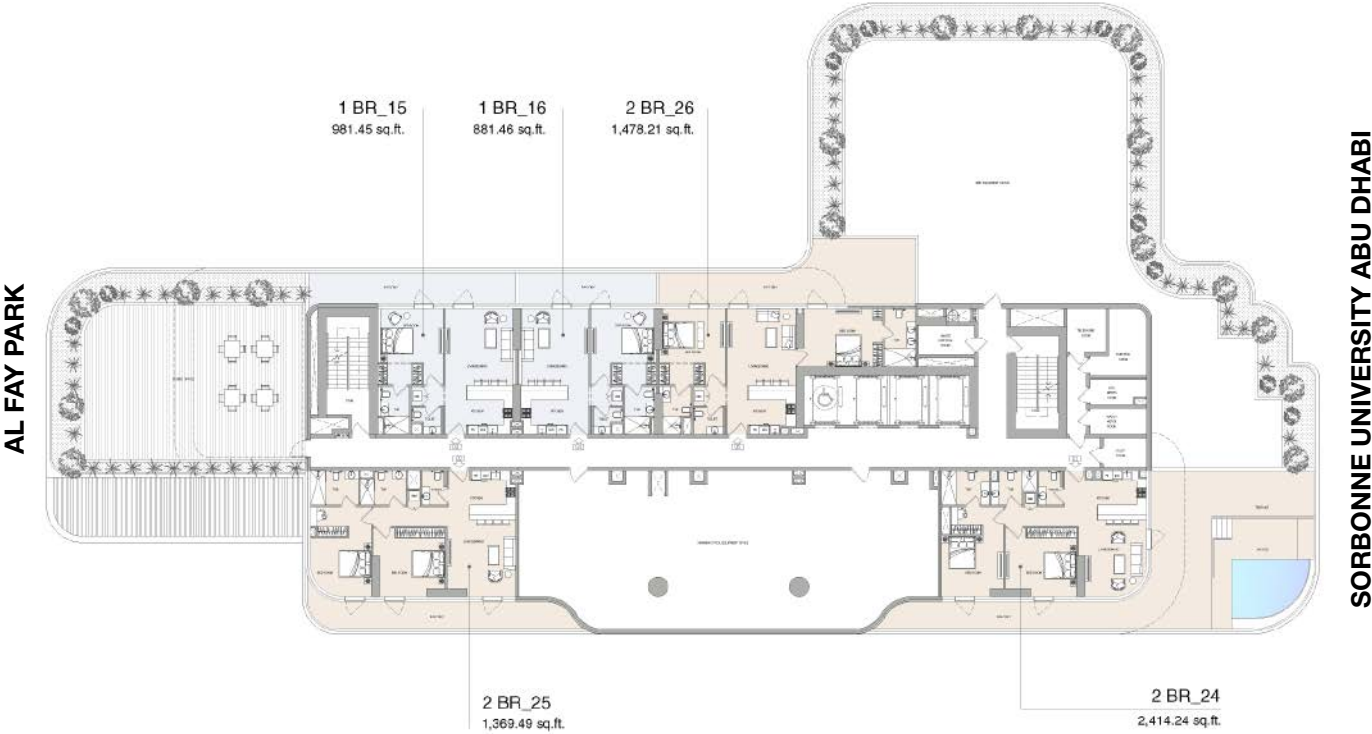


Disclaimer: all pictures, plans, layouts, information, data and details included in this brochure are indicative only may change at any time up to the final "as built" status in accordance with the final designs of the project, regulatory approvals and planning permissions

FLOOR 16



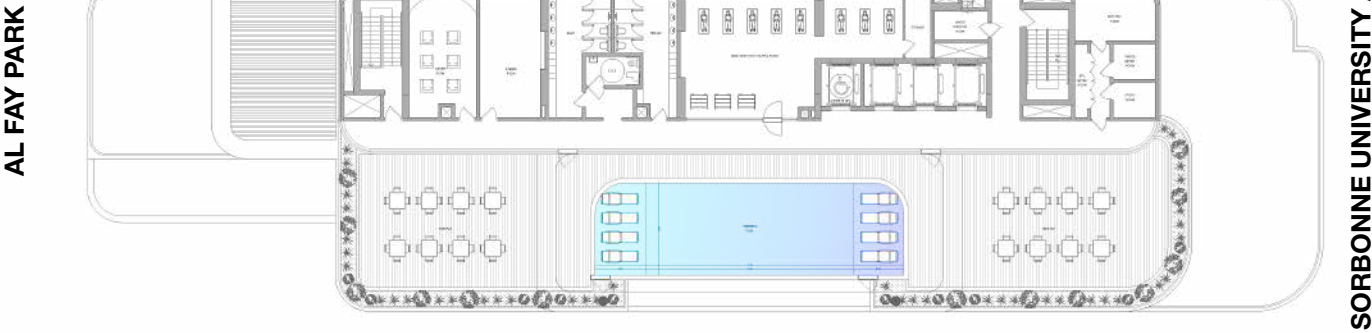
THE GATE DISTRICT



AL REEM ISLAND CANAL

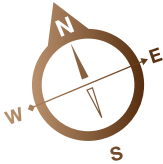
Disclaimer: all pictures, plans, layouts, information, data and details included in this brochure are indicative only may change at any time up to the final "as built" status in accordance with the final designs of the project, regulatory approvals and planning permissions

THE GATE DISTRICT



AL FAY PARK

SORBONNE UNIVERSITY ABU DHABI

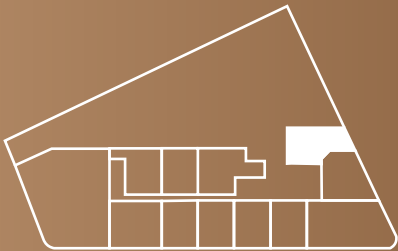
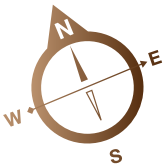


AL REEM ISLAND CANAL

Duplex



DUPLEX
FLOOR: 1, 2



DUPLEX 2 BEDROOM_01

| | |
|---------------------|-----------------|
| SUITE AREA | 1,375.95 sq. ft |
| BALCONY AREA | 535.93 sq. ft |
| TOTAL SELLABLE AREA | 1,911.89 sq. ft |

Disclaimer: all pictures, plans, layouts, information, data and details included in this brochure are indicative only may change at any time up to the final "as built" status in accordance with the final designs of the project, regulatory approvals and planning permissions

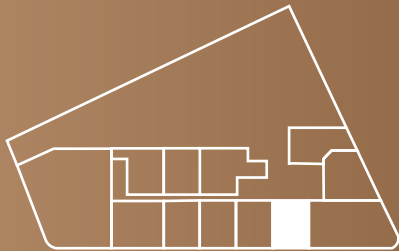
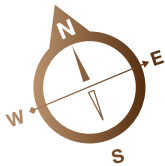
DUPLEX
FLOOR: 1, 2



LOWER LEVEL



UPPER LEVEL



DUPLEX 2 BEDROOM_02

| | |
|---------------------|-----------------|
| SUITE AREA | 1,377.78 sq. ft |
| BALCONY AREA | 381.36 sq. ft |
| TOTAL SELLABLE AREA | 1,759.15 sq. ft |

Disclaimer: all pictures, plans, layouts, information, data and details included in this brochure are indicative only may change at any time up to the final "as built" status in accordance with the final designs of the project, regulatory approvals and planning permissions

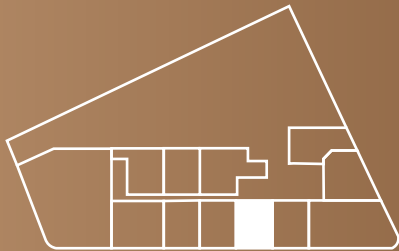
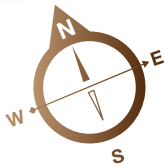
DUPLEX
FLOOR: 1, 2



LOWER LEVEL



UPPER LEVEL



DUPLEX 2 BEDROOM_03

| | |
|---------------------|-----------------|
| SUITE AREA | 1,376.16 sq. ft |
| BALCONY AREA | 431.74 sq. ft |
| TOTAL SELLABLE AREA | 1,807.91 sq. ft |

Disclaimer: all pictures, plans, layouts, information, data and details included in this brochure are indicative only may change at any time up to the final "as built" status in accordance with the final designs of the project, regulatory approvals and planning permissions

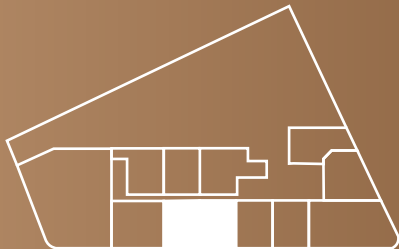
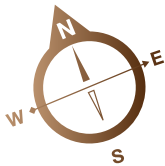
DUPLEX
FLOOR: 1, 2



LOWER LEVEL



UPPER LEVEL



DUPLEX 2 BEDROOM_04

| | |
|---------------------|-----------------|
| SUITE AREA | 1,366.69 sq. ft |
| BALCONY AREA | 382.76 sq. ft |
| TOTAL SELLABLE AREA | 1,749.46 sq. ft |

Disclaimer: all pictures, plans, layouts, information, data and details included in this brochure are indicative only may change at any time up to the final "as built" status in accordance with the final designs of the project, regulatory approvals and planning permissions

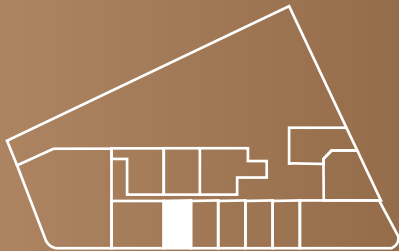
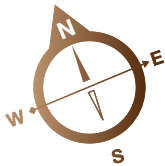
DUPLEX
FLOOR: 1, 2



LOWER LEVEL



UPPER LEVEL

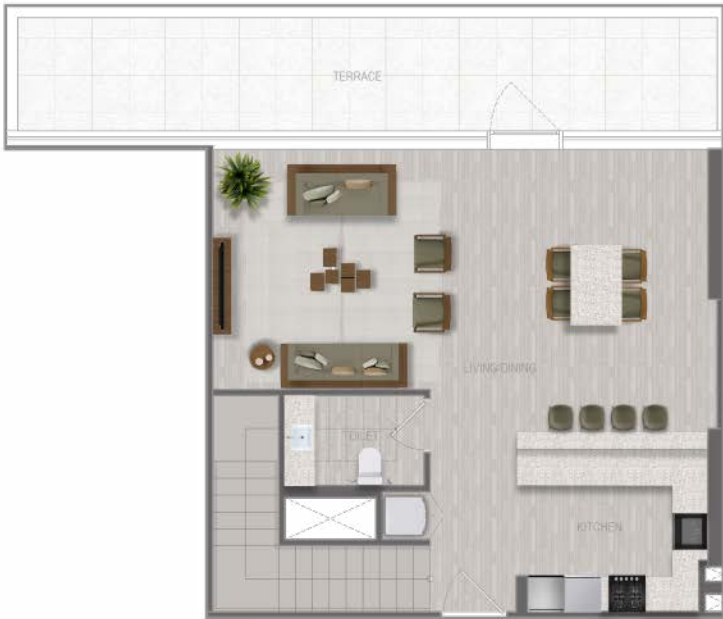


DUPLEX 2 BEDROOM_05

| | | |
|---------------------|----------|--------|
| SUITE AREA | 1,376.27 | sq. ft |
| BALCONY AREA | 431.74 | sq. ft |
| TOTAL SELLABLE AREA | 1,808.01 | sq. ft |

Disclaimer: all pictures, plans, layouts, information, data and details included in this brochure are indicative only may change at any time up to the final "as built" status in accordance with the final designs of the project, regulatory approvals and planning permissions

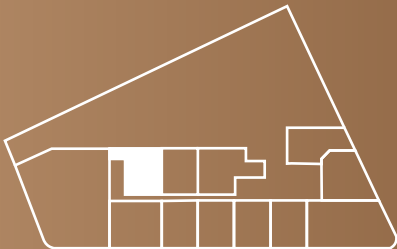
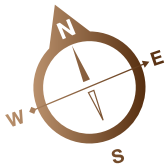
DUPLEX
FLOOR: 1, 2



LOWER LEVEL



UPPER LEVEL



DUPLEX 2 BEDROOM_06

| | |
|---------------------|-----------------|
| SUITE AREA | 1,365.62 sq. ft |
| BALCONY AREA | 582.00 sq. ft |
| TOTAL SELLABLE AREA | 1,947.62 sq. ft |

Disclaimer: all pictures, plans, layouts, information, data and details included in this brochure are indicative only may change at any time up to the final "as built" status in accordance with the final designs of the project, regulatory approvals and planning permissions

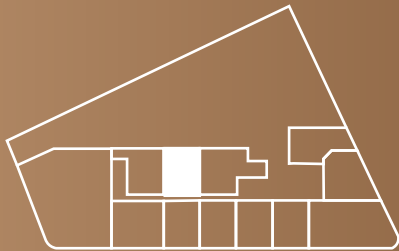
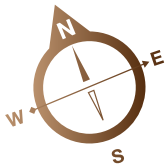
DUPLEX
FLOOR: 1, 2



LOWER LEVEL



UPPER LEVEL



DUPLEX 2 BEDROOM_07

| | |
|---------------------|-----------------|
| SUITE AREA | 1,360.02 sq. ft |
| BALCONY AREA | 397.62 sq. ft |
| TOTAL SELLABLE AREA | 1,757.64 sq. ft |

Disclaimer: all pictures, plans, layouts, information, data and details included in this brochure are indicative only may change at any time up to the final "as built" status in accordance with the final designs of the project, regulatory approvals and planning permissions

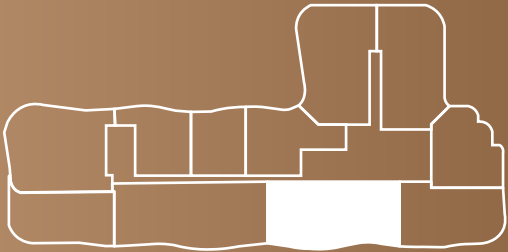
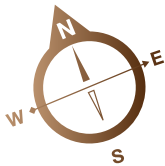
DUPLEX
FLOOR: 8



LOWER LEVEL



UPPER LEVEL



DUPLEX 2 BEDROOM_08

| | |
|---------------------|-----------------|
| SUITE AREA | 1,285.86 sq. ft |
| BALCONY AREA | 1,650.43 sq. ft |
| TOTAL SELLABLE AREA | 2,936.29 sq. ft |

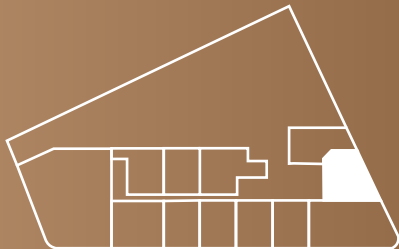
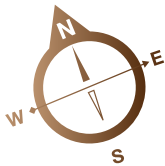
Disclaimer: all pictures, plans, layouts, information, data and details included in this brochure are indicative only may change at any time up to the final "as built" status in accordance with the final designs of the project, regulatory approvals and planning permissions

DUPLEX
FLOOR: 1, 2



LOWER LEVEL

UPPER LEVEL



DUPLEX 3 BEDROOM_01

| | |
|---------------------|-----------------|
| SUITE AREA | 1,726.10 sq. ft |
| BALCONY AREA | 627.10 sq. ft |
| TOTAL SELLABLE AREA | 2,353.21 sq. ft |

Disclaimer: all pictures, plans, layouts, information, data and details included in this brochure are indicative only may change at any time up to the final "as built" status in accordance with the final designs of the project, regulatory approvals and planning permissions

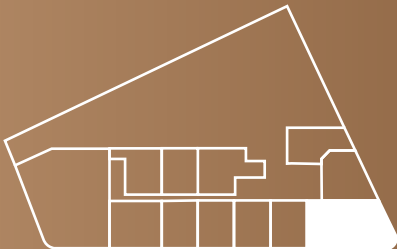
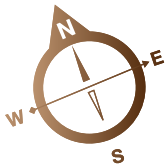
DUPLEX
FLOOR: 1, 2



LOWER LEVEL



UPPER LEVEL



DUPLEX 3 BEDROOM_02

| | |
|---------------------|-----------------|
| SUITE AREA | 1,862.69 sq. ft |
| BALCONY AREA | 1,505.22 sq. ft |
| TOTAL SELLABLE AREA | 3,367.92 sq. ft |

Disclaimer: all pictures, plans, layouts, information, data and details included in this brochure are indicative only may change at any time up to the final "as built" status in accordance with the final designs of the project, regulatory approvals and planning permissions

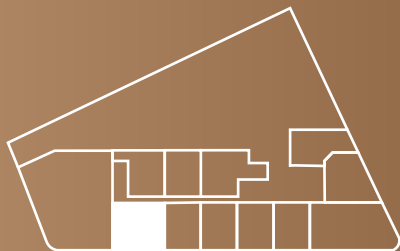
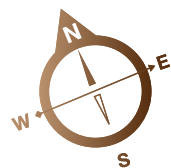
DUPLEX
FLOOR: 1, 2



LOWER LEVEL



UPPER LEVEL



DUPLEX 3 BEDROOM_03

| | | |
|---------------------|----------|--------|
| SUITE AREA | 1,878.30 | sq. ft |
| BALCONY AREA | 504.50 | sq. ft |
| TOTAL SELLABLE AREA | 2,382.81 | sq. ft |

Disclaimer: all pictures, plans, layouts, information, data and details included in this brochure are indicative only may change at any time up to the final "as built" status in accordance with the final designs of the project, regulatory approvals and planning permissions

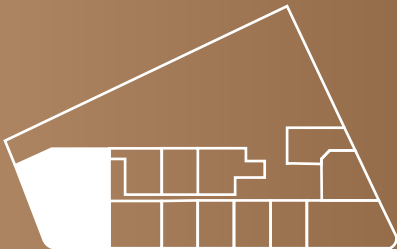
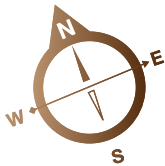
DUPLEX
FLOOR: 1, 2



LOWER LEVEL



UPPER LEVEL



DUPLEX 3 BEDROOM_04

| | |
|---------------------|-----------------|
| SUITE AREA | 2,431.57 sq. ft |
| BALCONY AREA | 3,378.68 sq. ft |
| TOTAL SELLABLE AREA | 5,810.25 sq. ft |

Disclaimer: all pictures, plans, layouts, information, data and details included in this brochure are indicative only may change at any time up to the final "as built" status in accordance with the final designs of the project, regulatory approvals and planning permissions

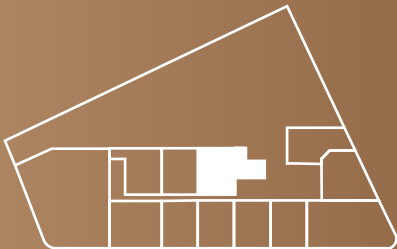
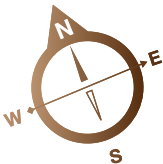
DUPLEX
FLOOR: 1, 2



LOWER LEVEL



UPPER LEVEL



DUPLEX 3 BEDROOM_05

| | |
|---------------------|-----------------|
| SUITE AREA | 1,907.36 sq. ft |
| BALCONY AREA | 547.99 sq. ft |
| TOTAL SELLABLE AREA | 2,455.36 sq. ft |

Disclaimer: all pictures, plans, layouts, information, data and details included in this brochure are indicative only may change at any time up to the final "as built" status in accordance with the final designs of the project, regulatory approvals and planning permissions

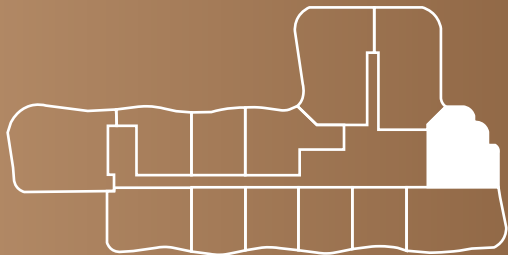
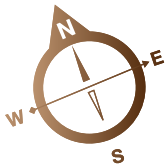
DUPLEX
FLOOR: 5, 11



LOWER LEVEL



UPPER LEVEL



DUPLEX 3 BEDROOM_06

| | |
|---------------------|-----------------|
| SUITE AREA | 1,726.96 sq. ft |
| BALCONY AREA | 1,652.26 sq. ft |
| TOTAL SELLABLE AREA | 3,379.22 sq. ft |

Disclaimer: all pictures, plans, layouts, information, data and details included in this brochure are indicative only may change at any time up to the final "as built" status in accordance with the final designs of the project, regulatory approvals and planning permissions

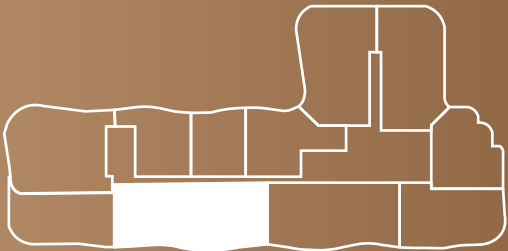
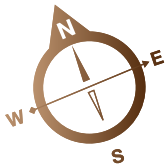
DUPLEX
FLOOR: 8



LOWER LEVEL



UPPER LEVEL



DUPLEX 3 BEDROOM_07

| | |
|---------------------|-----------------|
| SUITE AREA | 1,771.31 sq. ft |
| BALCONY AREA | 1,792.62 sq. ft |
| TOTAL SELLABLE AREA | 3,563.93 sq. ft |

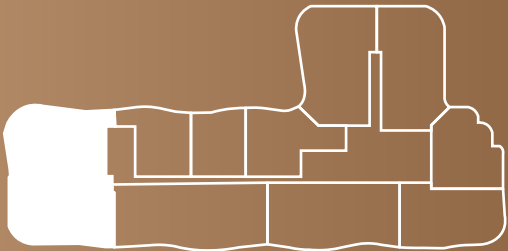
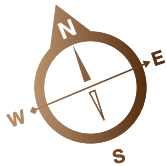
Disclaimer: all pictures, plans, layouts, information, data and details included in this brochure are indicative only may change at any time up to the final "as built" status in accordance with the final designs of the project, regulatory approvals and planning permissions

DUPLEX
FLOOR: 8



LOWER LEVEL

UPPER LEVEL



DUPLEX 3 BEDROOM_08

| | |
|---------------------|-----------------|
| SUITE AREA | 2,445.99 sq. ft |
| BALCONY AREA | 2,573.54 sq. ft |
| TOTAL SELLABLE AREA | 5,019.53 sq. ft |

Disclaimer: all pictures, plans, layouts, information, data and details included in this brochure are indicative only may change at any time up to the final "as built" status in accordance with the final designs of the project, regulatory approvals and planning permissions

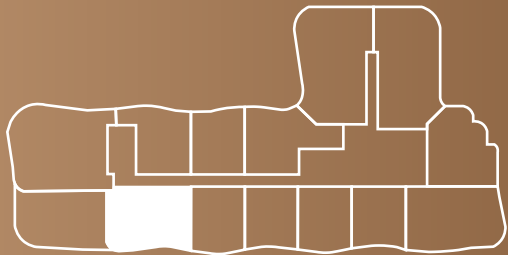
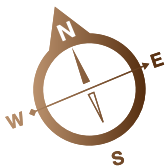
DUPLEX
FLOOR: 14



LOWER LEVEL



UPPER LEVEL



DUPLEX 3 BEDROOM_09

| | |
|---------------------|-----------------|
| SUITE AREA | 1,794.13 sq. ft |
| BALCONY AREA | 397.08 sq. ft |
| TOTAL SELLABLE AREA | 2,191.21 sq. ft |

Disclaimer: all pictures, plans, layouts, information, data and details included in this brochure are indicative only may change at any time up to the final "as built" status in accordance with the final designs of the project, regulatory approvals and planning permissions

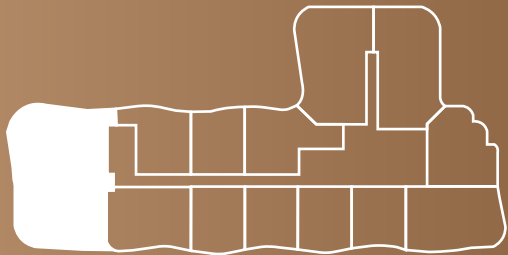
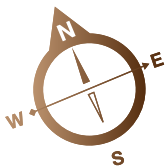
DUPLEX
FLOOR: 14



LOWER LEVEL



UPPER LEVEL



DUPLEX 3 BEDROOM_10

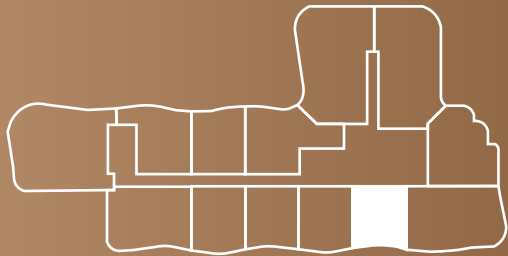
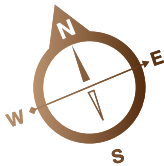
| | |
|---------------------|-----------------|
| SUITE AREA | 2,449.33 sq. ft |
| BALCONY AREA | 2,573.65 sq. ft |
| TOTAL SELLABLE AREA | 5,022.98 sq. ft |

Disclaimer: all pictures, plans, layouts, information, data and details included in this brochure are indicative only may change at any time up to the final "as built" status in accordance with the final designs of the project, regulatory approvals and planning permissions

One Bedroom



ONE BEDROOM
FLOOR: 3, 4, 14



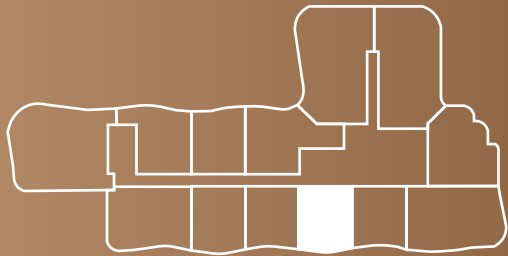
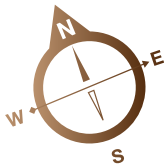
1 BR TYPE 01

| | | |
|---------------------|---------------|--------|
| SUITE AREA | 677.91 | sq. ft |
| BALCONY AREA | 146.60 | sq. ft |
| TOTAL SELLABLE AREA | 824.52 | sq. ft |

Disclaimer: all pictures, plans, layouts, information, data and details included in this brochure are indicative only may change at any time up to the final "as built" status in accordance with the final designs of the project, regulatory approvals and planning permissions

ONE BEDROOM

FLOOR: 3, 4, 5, 6, 7, 11, 12, 13, 14, 15



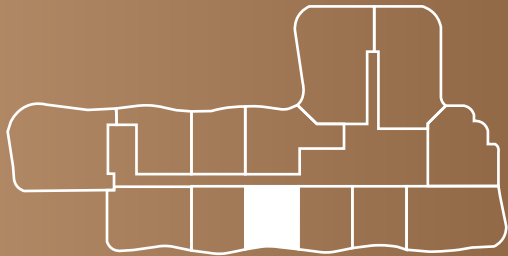
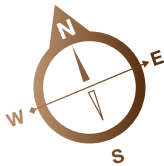
1 BR TYPE 02

| | | |
|---------------------|--------|--------|
| SUITE AREA | 677.05 | sq. ft |
| BALCONY AREA | 195.58 | sq. ft |
| TOTAL SELLABLE AREA | 872.63 | sq. ft |

Disclaimer: all pictures, plans, layouts, information, data and details included in this brochure are indicative only may change at any time up to the final "as built" status in accordance with the final designs of the project, regulatory approvals and planning permissions

ONE BEDROOM

FLOOR: 3, 4, 5, 6, 7, 12, 13, 14, 15



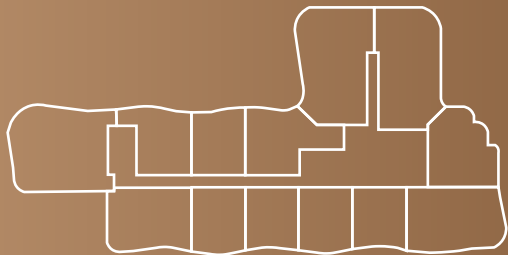
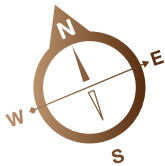
1 BR TYPE 03

| | | |
|---------------------|--------|--------|
| SUITE AREA | 672.31 | sq. ft |
| BALCONY AREA | 146.60 | sq. ft |
| TOTAL SELLABLE AREA | 818.92 | sq. ft |

Disclaimer: all pictures, plans, layouts, information, data and details included in this brochure are indicative only may change at any time up to the final "as built" status in accordance with the final designs of the project, regulatory approvals and planning permissions

ONE BEDROOM

FLOOR: 3, 4, 5, 6, 10, 11, 12



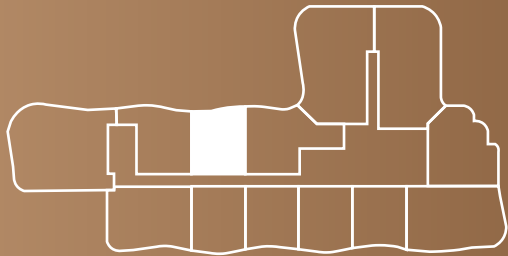
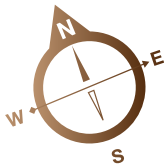
1 BR TYPE 04

| | | |
|---------------------|--------|--------|
| SUITE AREA | 671.24 | sq. ft |
| BALCONY AREA | 279.32 | sq. ft |
| TOTAL SELLABLE AREA | 950.56 | sq. ft |

Disclaimer: all pictures, plans, layouts, information, data and details included in this brochure are indicative only may change at any time up to the final "as built" status in accordance with the final designs of the project, regulatory approvals and planning permissions

ONE BEDROOM

FLOOR: 3, 4, 6, 7, 8, 9, 10, 11, 12, 13, 14, 15

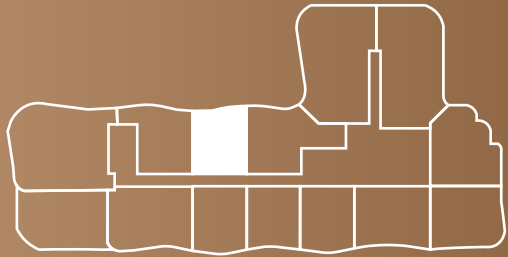
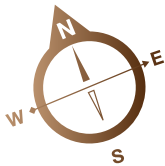


1 BR TYPE 05

| | | |
|---------------------|--------|--------|
| SUITE AREA | 673.50 | sq. ft |
| BALCONY AREA | 181.69 | sq. ft |
| TOTAL SELLABLE AREA | 855.19 | sq. ft |

Disclaimer: all pictures, plans, layouts, information, data and details included in this brochure are indicative only may change at any time up to the final "as built" status in accordance with the final designs of the project, regulatory approvals and planning permissions

ONE BEDROOM
FLOOR: 5

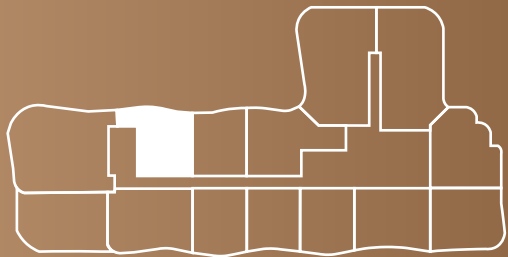
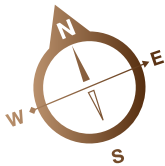


1 BR TYPE 06

| | | |
|---------------------|--------|--------|
| SUITE AREA | 673.60 | sq. ft |
| BALCONY AREA | 181.69 | sq. ft |
| TOTAL SELLABLE AREA | 855.30 | sq. ft |

Disclaimer: all pictures, plans, layouts, information, data and details included in this brochure are indicative only may change at any time up to the final "as built" status in accordance with the final designs of the project, regulatory approvals and planning permissions

ONE BEDROOM
FLOOR: 7, 8

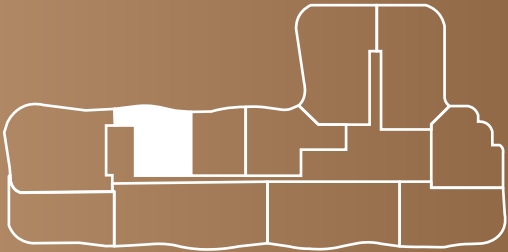
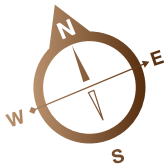


1 BR TYPE 07

| | | |
|---------------------|--------|--------|
| SUITE AREA | 671.77 | sq. ft |
| BALCONY AREA | 279.32 | sq. ft |
| TOTAL SELLABLE AREA | 951.10 | sq. ft |

Disclaimer: all pictures, plans, layouts, information, data and details included in this brochure are indicative only may change at any time up to the final "as built" status in accordance with the final designs of the project, regulatory approvals and planning permissions

ONE BEDROOM
FLOOR: 9

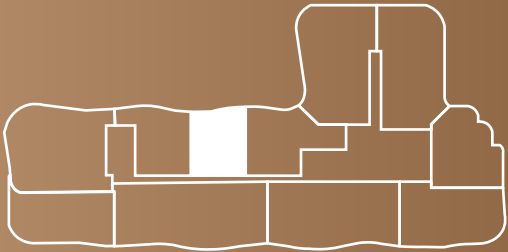
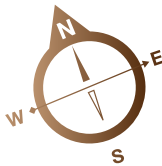


1 BR TYPE 08

| | | |
|---------------------|--------|--------|
| SUITE AREA | 671.77 | sq. ft |
| BALCONY AREA | 276.52 | sq. ft |
| TOTAL SELLABLE AREA | 948.30 | sq. ft |

Disclaimer: all pictures, plans, layouts, information, data and details included in this brochure are indicative only may change at any time up to the final "as built" status in accordance with the final designs of the project, regulatory approvals and planning permissions

ONE BEDROOM
FLOOR: 9

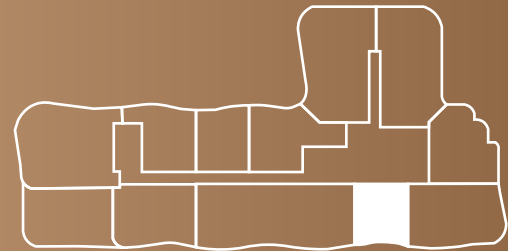
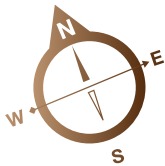


1 BR TYPE 09

| | | |
|---------------------|--------|--------|
| SUITE AREA | 673.50 | sq. ft |
| BALCONY AREA | 180.51 | sq. ft |
| TOTAL SELLABLE AREA | 854.01 | sq. ft |

Disclaimer: all pictures, plans, layouts, information, data and details included in this brochure are indicative only may change at any time up to the final "as built" status in accordance with the final designs of the project, regulatory approvals and planning permissions

ONE BEDROOM
FLOOR: 10



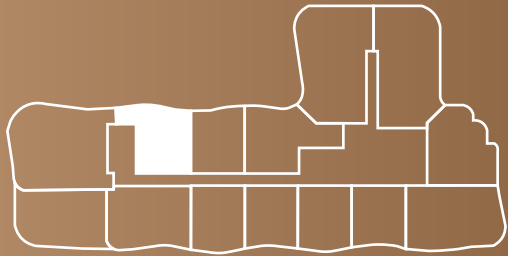
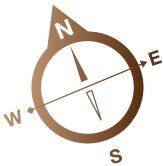
1 BR TYPE 10

| | | |
|---------------------|--------|--------|
| SUITE AREA | 671.45 | sq. ft |
| BALCONY AREA | 148.76 | sq. ft |
| TOTAL SELLABLE AREA | 820.21 | sq. ft |

Disclaimer: all pictures, plans, layouts, information, data and details included in this brochure are indicative only may change at any time up to the final "as built" status in accordance with the final designs of the project, regulatory approvals and planning permissions

ONE BEDROOM

FLOOR: 10, 13, 14, 15

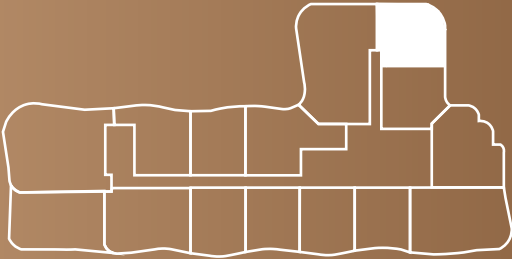
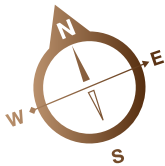


1 BR TYPE 11

| | | |
|---------------------|--------|--------|
| SUITE AREA | 671.67 | sq. ft |
| BALCONY AREA | 279.32 | sq. ft |
| TOTAL SELLABLE AREA | 950.99 | sq. ft |

Disclaimer: all pictures, plans, layouts, information, data and details included in this brochure are indicative only may change at any time up to the final "as built" status in accordance with the final designs of the project, regulatory approvals and planning permissions

ONE BEDROOM
FLOOR: 15

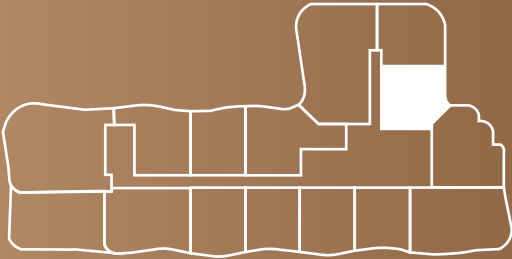
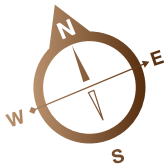


1 BR TYPE 12

| | | |
|---------------------|----------|--------|
| SUITE AREA | 706.00 | sq. ft |
| BALCONY AREA | 362.53 | sq. ft |
| TOTAL SELLABLE AREA | 1,068.53 | sq. ft |

Disclaimer: all pictures, plans, layouts, information, data and details included in this brochure are indicative only may change at any time up to the final "as built" status in accordance with the final designs of the project, regulatory approvals and planning permissions

ONE BEDROOM
FLOOR: 15

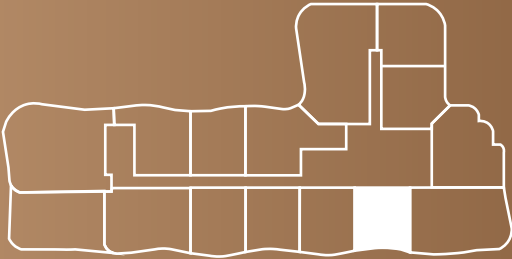
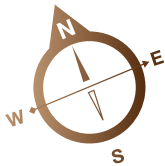


1 BR TYPE 13

| | | |
|---------------------|--------|--------|
| SUITE AREA | 677.26 | sq. ft |
| BALCONY AREA | 119.59 | sq. ft |
| TOTAL SELLABLE AREA | 796.85 | sq. ft |

Disclaimer: all pictures, plans, layouts, information, data and details included in this brochure are indicative only may change at any time up to the final "as built" status in accordance with the final designs of the project, regulatory approvals and planning permissions

ONE BEDROOM
FLOOR: 15

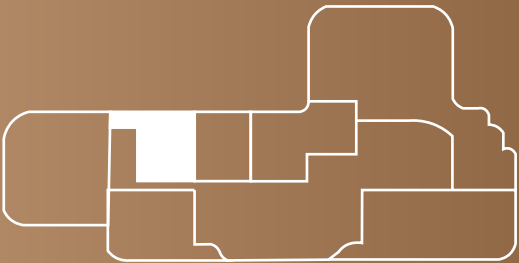
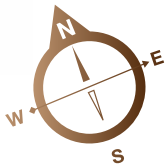


1 BR TYPE 14

| | | |
|---------------------|--------|--------|
| SUITE AREA | 677.80 | sq. ft |
| BALCONY AREA | 146.60 | sq. ft |
| TOTAL SELLABLE AREA | 824.41 | sq. ft |

Disclaimer: all pictures, plans, layouts, information, data and details included in this brochure are indicative only may change at any time up to the final "as built" status in accordance with the final designs of the project, regulatory approvals and planning permissions

ONE BEDROOM
FLOOR: 16

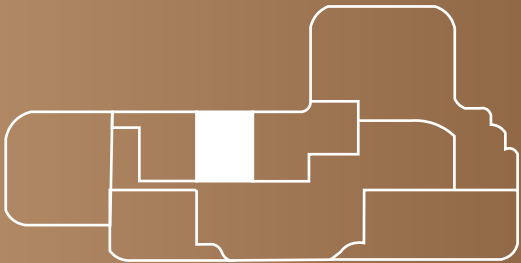
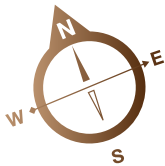


1 BR TYPE 15

| | | |
|---------------------|--------|--------|
| SUITE AREA | 671.77 | sq. ft |
| BALCONY AREA | 309.68 | sq. ft |
| TOTAL SELLABLE AREA | 981.45 | sq. ft |

Disclaimer: all pictures, plans, layouts, information, data and details included in this brochure are indicative only may change at any time up to the final "as built" status in accordance with the final designs of the project, regulatory approvals and planning permissions

ONE BEDROOM
FLOOR: 16



1 BR TYPE 16

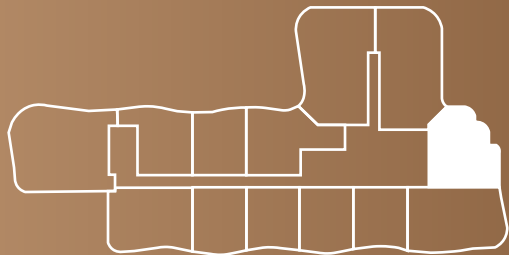
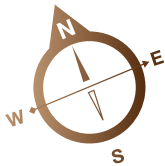
| | | |
|---------------------|--------|--------|
| SUITE AREA | 673.50 | sq. ft |
| BALCONY AREA | 207.96 | sq. ft |
| TOTAL SELLABLE AREA | 881.46 | sq. ft |

Disclaimer: all pictures, plans, layouts, information, data and details included in this brochure are indicative only may change at any time up to the final "as built" status in accordance with the final designs of the project, regulatory approvals and planning permissions

Two Bedroom



TWO BEDROOM
FLOOR: 3, 4, 10, 15



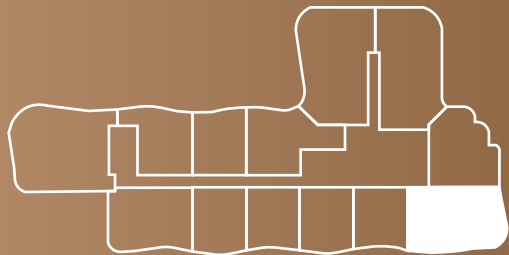
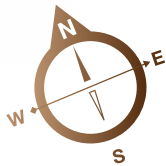
2 BR TYPE 01

| | | |
|---------------------|-----------------|--------|
| SUITE AREA | 919.56 | sq. ft |
| BALCONY AREA | 261.35 | sq. ft |
| TOTAL SELLABLE AREA | 1,180.91 | sq. ft |

Disclaimer: all pictures, plans, layouts, information, data and details included in this brochure are indicative only may change at any time up to the final "as built" status in accordance with the final designs of the project, regulatory approvals and planning permissions

TWO BEDROOM

FLOOR: 3, 4, 8, 9, 10, 14

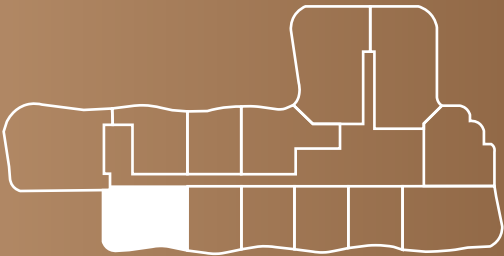
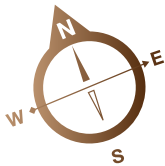


2 BR TYPE 02

| | | |
|---------------------|----------|--------|
| SUITE AREA | 999.54 | sq. ft |
| BALCONY AREA | 501.60 | sq. ft |
| TOTAL SELLABLE AREA | 1,501.13 | sq. ft |

Disclaimer: all pictures, plans, layouts, information, data and details included in this brochure are indicative only may change at any time up to the final "as built" status in accordance with the final designs of the project, regulatory approvals and planning permissions

TWO BEDROOM
FLOOR: 3, 4, 15



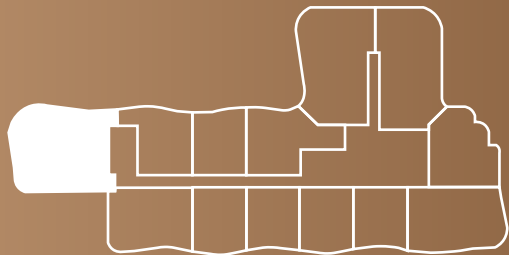
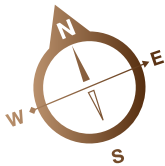
2 BR TYPE 03

| | |
|---------------------|------------------------|
| SUITE AREA | 1,002.23 sq. ft |
| BALCONY AREA | 250.91 sq. ft |
| TOTAL SELLABLE AREA | 1,253.13 sq. ft |

Disclaimer: all pictures, plans, layouts, information, data and details included in this brochure are indicative only may change at any time up to the final "as built" status in accordance with the final designs of the project, regulatory approvals and planning permissions

TWO BEDROOM
FLOOR: 3, 4

A1LA
RESIDENCE

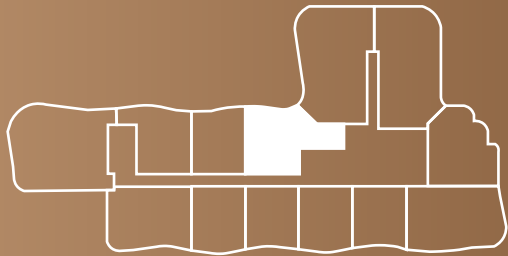
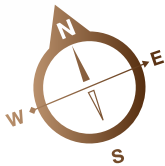


2 BR TYPE 04

| | |
|---------------------|------------------------|
| SUITE AREA | 1,303.29 sq. ft |
| BALCONY AREA | 557.35 sq. ft |
| TOTAL SELLABLE AREA | 1,860.65 sq. ft |

Disclaimer: all pictures, plans, layouts, information, data and details included in this brochure are indicative only may change at any time up to the final "as built" status in accordance with the final designs of the project, regulatory approvals and planning permissions

TWO BEDROOM
FLOOR: 3, 4

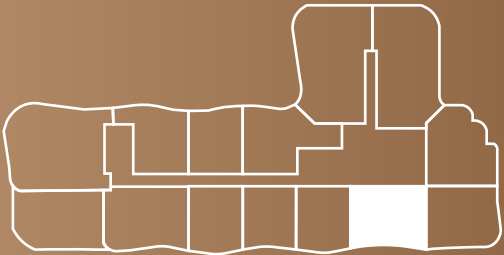
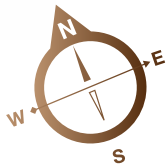


2 BR TYPE 05

| | | |
|---------------------|-----------------|--------|
| SUITE AREA | 947.55 | sq. ft |
| BALCONY AREA | 260.16 | sq. ft |
| TOTAL SELLABLE AREA | 1,207.71 | sq. ft |

Disclaimer: all pictures, plans, layouts, information, data and details included in this brochure are indicative only may change at any time up to the final "as built" status in accordance with the final designs of the project, regulatory approvals and planning permissions

TWO BEDROOM
FLOOR: 5, 11

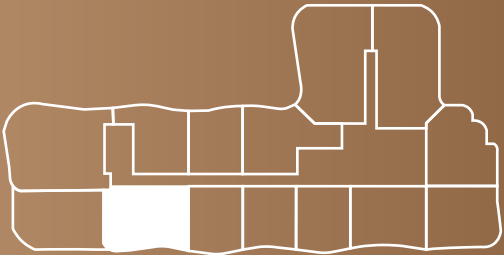
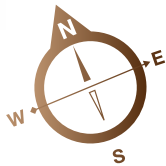


2 BR TYPE 06

| | |
|---------------------|------------------------|
| SUITE AREA | 1,000.50 sq. ft |
| BALCONY AREA | 254.78 sq. ft |
| TOTAL SELLABLE AREA | 1,255.29 sq. ft |

Disclaimer: all pictures, plans, layouts, information, data and details included in this brochure are indicative only may change at any time up to the final "as built" status in accordance with the final designs of the project, regulatory approvals and planning permissions

TWO BEDROOM
FLOOR: 5, 6, 11, 12



2 BR TYPE 07

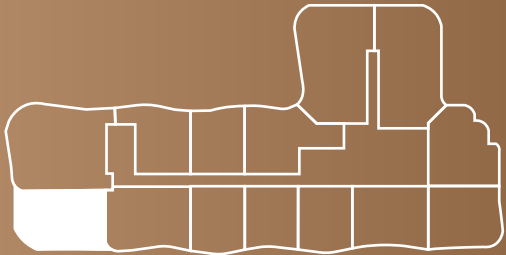
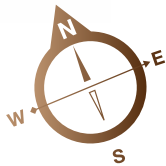
| | |
|---------------------|------------------------|
| SUITE AREA | 1,017.73 sq. ft |
| BALCONY AREA | 241.11 sq. ft |
| TOTAL SELLABLE AREA | 1,258.84 sq. ft |

Disclaimer: all pictures, plans, layouts, information, data and details included in this brochure are indicative only may change at any time up to the final "as built" status in accordance with the final designs of the project, regulatory approvals and planning permissions

TWO BEDROOM

FLOOR: 5, 6, 7, 11, 12

A1LA
RESIDENCE

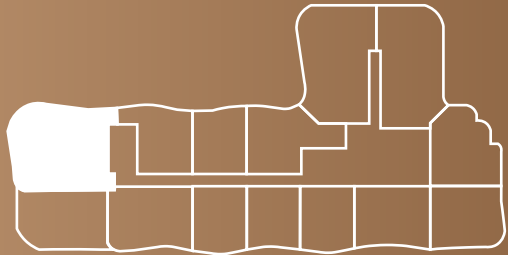
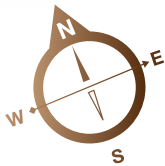


2 BR TYPE 08

| | |
|---------------------|-----------------|
| SUITE AREA | 1,083.17 sq. ft |
| BALCONY AREA | 359.94 sq. ft |
| TOTAL SELLABLE AREA | 1,443.12 sq. ft |

Disclaimer: all pictures, plans, layouts, information, data and details included in this brochure are indicative only may change at any time up to the final "as built" status in accordance with the final designs of the project, regulatory approvals and planning permissions

TWO BEDROOM
FLOOR: 5, 6, 7, 11, 12



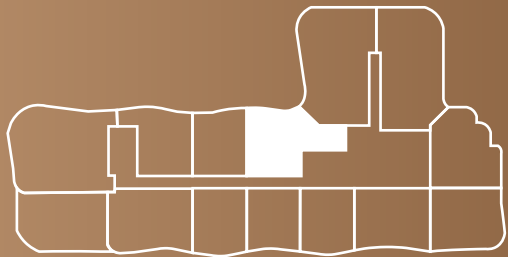
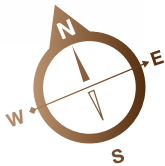
2 BR TYPE 09

| | |
|---------------------|------------------------|
| SUITE AREA | 1,205.77 sq. ft |
| BALCONY AREA | 544.98 sq. ft |
| TOTAL SELLABLE AREA | 1,750.75 sq. ft |

Disclaimer: all pictures, plans, layouts, information, data and details included in this brochure are indicative only may change at any time up to the final "as built" status in accordance with the final designs of the project, regulatory approvals and planning permissions

TWO BEDROOM

FLOOR: 5, 6, 7, 8, 10, 11, 12, 13, 14, 15

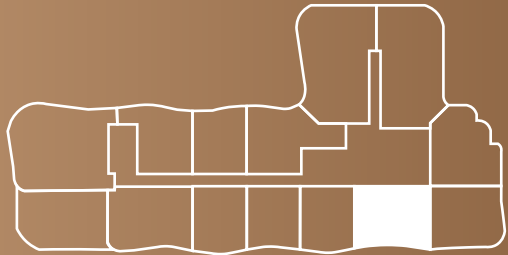
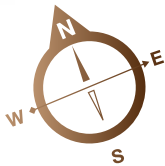


2 BR TYPE 10

| | | |
|---------------------|----------|--------|
| SUITE AREA | 947.44 | sq. ft |
| BALCONY AREA | 260.16 | sq. ft |
| TOTAL SELLABLE AREA | 1,207.60 | sq. ft |

Disclaimer: all pictures, plans, layouts, information, data and details included in this brochure are indicative only may change at any time up to the final "as built" status in accordance with the final designs of the project, regulatory approvals and planning permissions

TWO BEDROOM
FLOOR: 6, 7, 12, 13

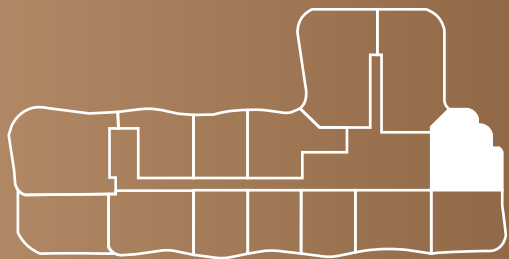
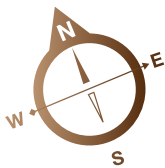


2 BR TYPE 11

| | |
|---------------------|------------------------|
| SUITE AREA | 1,000.50 sq. ft |
| BALCONY AREA | 256.40 sq. ft |
| TOTAL SELLABLE AREA | 1,256.90 sq. ft |

Disclaimer: all pictures, plans, layouts, information, data and details included in this brochure are indicative only may change at any time up to the final "as built" status in accordance with the final designs of the project, regulatory approvals and planning permissions

TWO BEDROOM
FLOOR: 7, 13

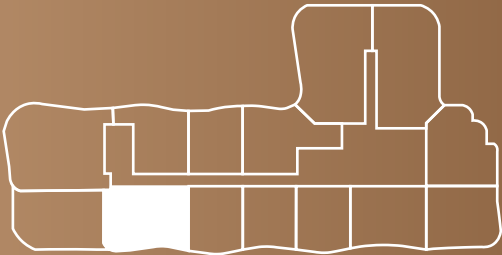
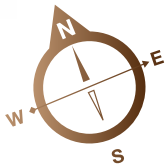


2 BR TYPE 12

| | | |
|---------------------|-----------------|--------|
| SUITE AREA | 910.30 | sq. ft |
| BALCONY AREA | 274.48 | sq. ft |
| TOTAL SELLABLE AREA | 1,184.78 | sq. ft |

Disclaimer: all pictures, plans, layouts, information, data and details included in this brochure are indicative only may change at any time up to the final "as built" status in accordance with the final designs of the project, regulatory approvals and planning permissions

TWO BEDROOM
FLOOR: 7



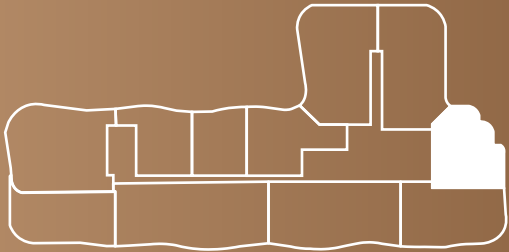
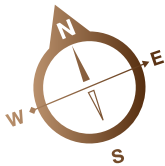
2 BR TYPE 13

| | |
|---------------------|------------------------|
| SUITE AREA | 1,017.83 sq. ft |
| BALCONY AREA | 241.11 sq. ft |
| TOTAL SELLABLE AREA | 1,258.95 sq. ft |

Disclaimer: all pictures, plans, layouts, information, data and details included in this brochure are indicative only may change at any time up to the final "as built" status in accordance with the final designs of the project, regulatory approvals and planning permissions

TWO BEDROOM
FLOOR: 8

A1LA
RESIDENCE

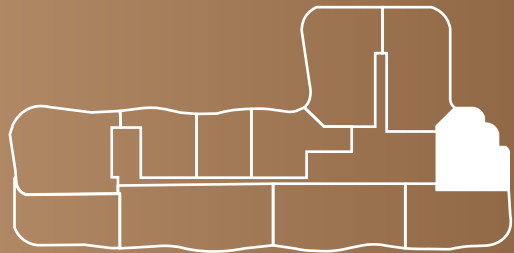
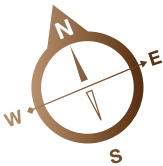


2 BR TYPE 14

| | | |
|---------------------|-----------------|--------|
| SUITE AREA | 919.56 | sq. ft |
| BALCONY AREA | 259.30 | sq. ft |
| TOTAL SELLABLE AREA | 1,178.86 | sq. ft |

Disclaimer: all pictures, plans, layouts, information, data and details included in this brochure are indicative only may change at any time up to the final "as built" status in accordance with the final designs of the project, regulatory approvals and planning permissions

TWO BEDROOM
FLOOR: 9

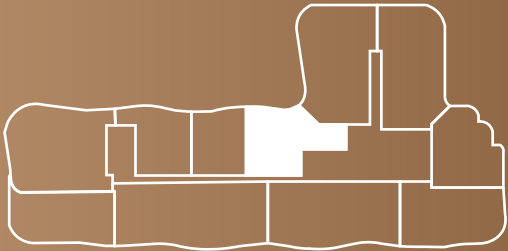
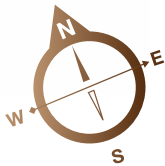


2 BR TYPE 15

| | | |
|---------------------|-----------------|--------|
| SUITE AREA | 917.84 | sq. ft |
| BALCONY AREA | 263.39 | sq. ft |
| TOTAL SELLABLE AREA | 1,181.23 | sq. ft |

Disclaimer: all pictures, plans, layouts, information, data and details included in this brochure are indicative only may change at any time up to the final "as built" status in accordance with the final designs of the project, regulatory approvals and planning permissions

TWO BEDROOM
FLOOR: 9

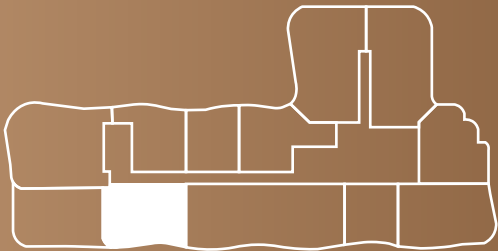
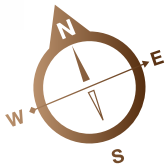


2 BR TYPE 16

| | | |
|---------------------|-----------------|--------|
| SUITE AREA | 947.44 | sq. ft |
| BALCONY AREA | 264.15 | sq. ft |
| TOTAL SELLABLE AREA | 1,211.59 | sq. ft |

Disclaimer: all pictures, plans, layouts, information, data and details included in this brochure are indicative only may change at any time up to the final "as built" status in accordance with the final designs of the project, regulatory approvals and planning permissions

TWO BEDROOM
FLOOR: 10



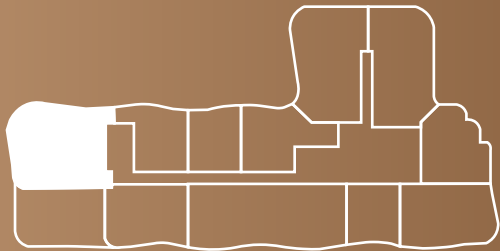
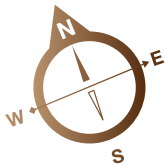
2 BR TYPE 17

| | | |
|---------------------|-----------------|--------|
| SUITE AREA | 984.25 | sq. ft |
| BALCONY AREA | 252.52 | sq. ft |
| TOTAL SELLABLE AREA | 1,236.77 | sq. ft |

Disclaimer: all pictures, plans, layouts, information, data and details included in this brochure are indicative only may change at any time up to the final "as built" status in accordance with the final designs of the project, regulatory approvals and planning permissions

TWO BEDROOM
FLOOR: 10

A1LA
RESIDENCE

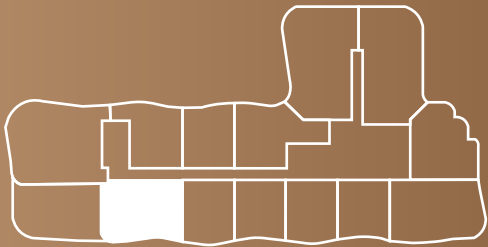
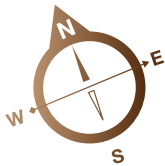


2 BR TYPE 18

| | |
|---------------------|------------------------|
| SUITE AREA | 1,302.32 sq. ft |
| BALCONY AREA | 557.35 sq. ft |
| TOTAL SELLABLE AREA | 1,859.68 sq. ft |

Disclaimer: all pictures, plans, layouts, information, data and details included in this brochure are indicative only may change at any time up to the final "as built" status in accordance with the final designs of the project, regulatory approvals and planning permissions

TWO BEDROOM
FLOOR: 13



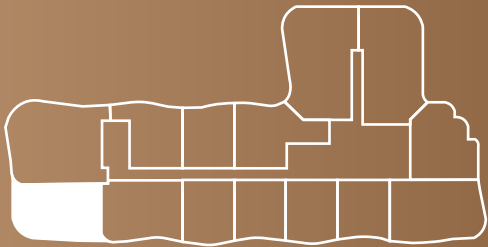
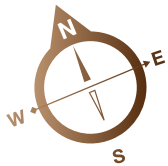
2 BR TYPE 19

| | |
|---------------------|------------------------|
| SUITE AREA | 1,018.48 sq. ft |
| BALCONY AREA | 241.11 sq. ft |
| TOTAL SELLABLE AREA | 1,259.59 sq. ft |

Disclaimer: all pictures, plans, layouts, information, data and details included in this brochure are indicative only may change at any time up to the final "as built" status in accordance with the final designs of the project, regulatory approvals and planning permissions

TWO BEDROOM
FLOOR: 13

A1LA
RESIDENCE

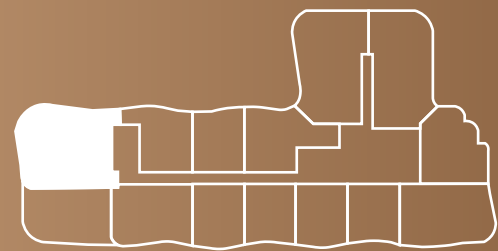
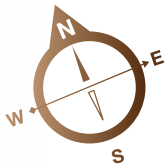


2 BR TYPE 20

| | |
|---------------------|------------------------|
| SUITE AREA | 1,083.06 sq. ft |
| BALCONY AREA | 359.73 sq. ft |
| TOTAL SELLABLE AREA | 1,442.79 sq. ft |

Disclaimer: all pictures, plans, layouts, information, data and details included in this brochure are indicative only may change at any time up to the final "as built" status in accordance with the final designs of the project, regulatory approvals and planning permissions

TWO BEDROOM
FLOOR: 13

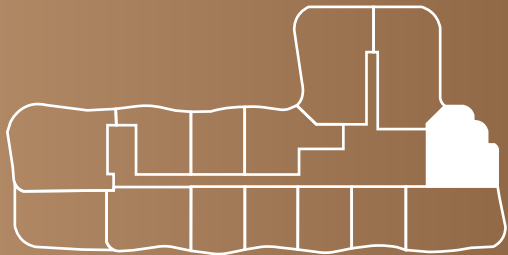
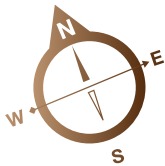


2 BR TYPE 21

| | |
|---------------------|------------------------|
| SUITE AREA | 1,205.77 sq. ft |
| BALCONY AREA | 545.19 sq. ft |
| TOTAL SELLABLE AREA | 1,750.97 sq. ft |

Disclaimer: all pictures, plans, layouts, information, data and details included in this brochure are indicative only may change at any time up to the final "as built" status in accordance with the final designs of the project, regulatory approvals and planning permissions

TWO BEDROOM
FLOOR: 14

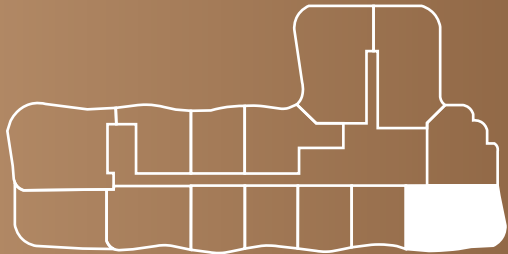
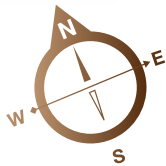


2 BR TYPE 22

| | | |
|---------------------|----------|--------|
| SUITE AREA | 919.56 | sq. ft |
| BALCONY AREA | 245.96 | sq. ft |
| TOTAL SELLABLE AREA | 1,165.52 | sq. ft |

Disclaimer: all pictures, plans, layouts, information, data and details included in this brochure are indicative only may change at any time up to the final "as built" status in accordance with the final designs of the project, regulatory approvals and planning permissions

TWO BEDROOM
FLOOR: 14

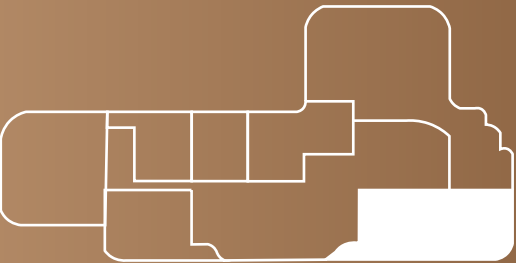
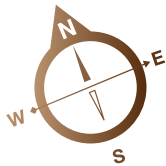


2 BR TYPE 23

| | | |
|---------------------|-----------------|--------|
| SUITE AREA | 999.43 | sq. ft |
| BALCONY AREA | 497.51 | sq. ft |
| TOTAL SELLABLE AREA | 1,496.94 | sq. ft |

Disclaimer: all pictures, plans, layouts, information, data and details included in this brochure are indicative only may change at any time up to the final "as built" status in accordance with the final designs of the project, regulatory approvals and planning permissions

TWO BEDROOM
FLOOR: 16

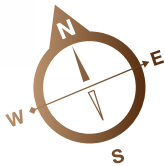


2 BR TYPE 24

| | |
|---------------------|------------------------|
| SUITE AREA | 1,000.50 sq. ft |
| BALCONY AREA | 1,413.73 sq. ft |
| TOTAL SELLABLE AREA | 2,414.24 sq. ft |

Disclaimer: all pictures, plans, layouts, information, data and details included in this brochure are indicative only may change at any time up to the final "as built" status in accordance with the final designs of the project, regulatory approvals and planning permissions

TWO BEDROOM
FLOOR: 16

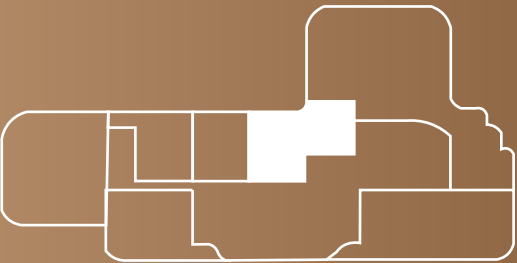
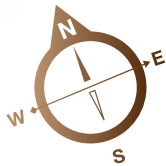


2 BR TYPE 25

| | |
|---------------------|------------------------|
| SUITE AREA | 1,002.23 sq. ft |
| BALCONY AREA | 367.26 sq. ft |
| TOTAL SELLABLE AREA | 1,369.49 sq. ft |

Disclaimer: all pictures, plans, layouts, information, data and details included in this brochure are indicative only may change at any time up to the final "as built" status in accordance with the final designs of the project, regulatory approvals and planning permissions

TWO BEDROOM
FLOOR: 16



2 BR TYPE 26

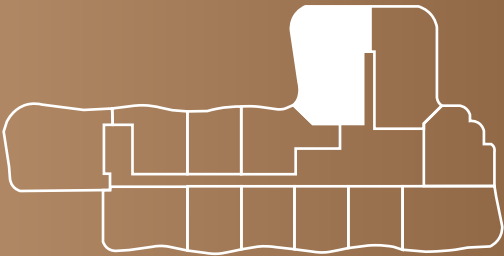
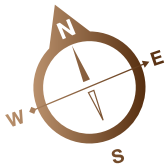
| | | |
|---------------------|-----------------|--------|
| SUITE AREA | 947.55 | sq. ft |
| BALCONY AREA | 530.66 | sq. ft |
| TOTAL SELLABLE AREA | 1,478.21 | sq. ft |

Disclaimer: all pictures, plans, layouts, information, data and details included in this brochure are indicative only may change at any time up to the final "as built" status in accordance with the final designs of the project, regulatory approvals and planning permissions

Three Bedroom

THREE BEDROOM

FLOOR: 3, 4, 10, 11, 12, 13, 14, 15



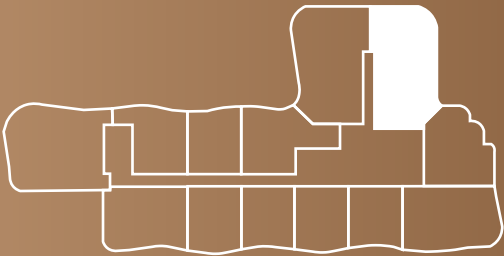
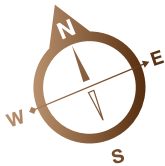
3 BR TYPE 01

| | |
|---------------------|-----------------|
| SUITE AREA | 1,372.29 sq. ft |
| BALCONY AREA | 685.88 sq. ft |
| TOTAL SELLABLE AREA | 2,058.17 sq. ft |

Disclaimer: all pictures, plans, layouts, information, data and details included in this brochure are indicative only may change at any time up to the final "as built" status in accordance with the final designs of the project, regulatory approvals and planning permissions

THREE BEDROOM

FLOOR: 3, 4, 8, 9, 10, 11, 12, 13, 14

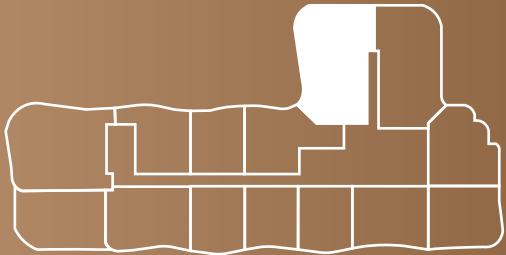
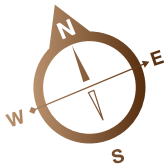


3 BR TYPE 02

| | |
|---------------------|-----------------|
| SUITE AREA | 1,434.07 sq. ft |
| BALCONY AREA | 485.34 sq. ft |
| TOTAL SELLABLE AREA | 1,919.42 sq. ft |

Disclaimer: all pictures, plans, layouts, information, data and details included in this brochure are indicative only may change at any time up to the final "as built" status in accordance with the final designs of the project, regulatory approvals and planning permissions

THREE BEDROOM
FLOOR: 5, 6, 7, 9

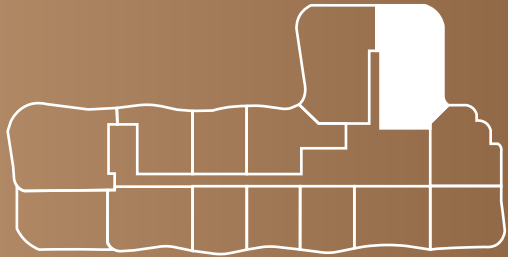
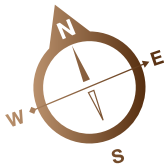


3 BR TYPE 03

| | |
|---------------------|------------------------|
| SUITE AREA | 1,372.29 sq. ft |
| BALCONY AREA | 683.40 sq. ft |
| TOTAL SELLABLE AREA | 2,055.69 sq. ft |

Disclaimer: all pictures, plans, layouts, information, data and details included in this brochure are indicative only may change at any time up to the final "as built" status in accordance with the final designs of the project, regulatory approvals and planning permissions

THREE BEDROOM
FLOOR: 5, 6, 7, 9



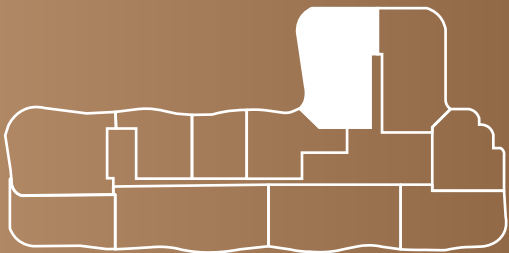
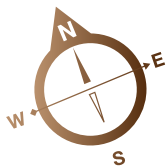
3 BR TYPE 04

| | |
|---------------------|-----------------|
| SUITE AREA | 1,434.07 sq. ft |
| BALCONY AREA | 487.82 sq. ft |
| TOTAL SELLABLE AREA | 1,921.90 sq. ft |

Disclaimer: all pictures, plans, layouts, information, data and details included in this brochure are indicative only may change at any time up to the final "as built" status in accordance with the final designs of the project, regulatory approvals and planning permissions

THREE BEDROOM
FLOOR: 8

A1LA
RESIDENCE



3 BR TYPE 05

| | |
|---------------------|-----------------|
| SUITE AREA | 1,372.40 sq. ft |
| BALCONY AREA | 685.88 sq. ft |
| TOTAL SELLABLE AREA | 2,058.27 sq. ft |

Disclaimer: all pictures, plans, layouts, information, data and details included in this brochure are indicative only may change at any time up to the final "as built" status in accordance with the final designs of the project, regulatory approvals and planning permissions





Object 1