

# Hilton®

RESIDENCES  
DUBAI MARITIME CITY



# FLOOR PLANS





## Ground Floor

Dubai skyline & Atlantis view

Forest & Sea View

Sea view



**PRESTIGE ONE**  
DEVELOPMENTS

All images, renderings, floor plans, layouts, and other visuals in this material are indicative artistic impressions for conceptual purposes only and do not represent actual photographs of the project or Units and is copyright of the Developer which shall not be reproduced or used without consent. Designs, finishes, colors, materials, dimensions, landscaping, amenities, and surrounding views may vary during design development or construction. Furniture, appliances, and decorative elements shown are illustrative and only included where expressly stated in the Sale and Purchase Agreement (SPA). This material does not constitute an offer, warranty, or representation beyond the specifications and obligations expressly set out in the SPA.





## Podium 01-Dropoff

Dubai skyline & Atlantis view

Forest & Sea view

Sea view

**PRESTIGE ONE**  
DEVELOPMENTS

All images, renderings, floor plans, layouts, and other visuals in this material are indicative artistic impressions for conceptual purposes only and do not represent actual photographs of the project or Units and is copyright of the Developer which shall not be reproduced or used without consent. Designs, finishes, colors, materials, dimensions, landscaping, amenities, and surrounding views may vary during design development or construction. Furniture, appliances, and decorative elements shown are illustrative and only included where expressly stated in the Sale and Purchase Agreement (SPA). This material does not constitute an offer, warranty, or representation beyond the specifications and obligations expressly set out in the SPA.





# Podium Paradise Level 1

Dubai skyline & Atlantis view

Forest & Sea view

Sea view



**PRESTIGE ONE**  
DEVELOPMENTS

All images, renderings, floor plans, layouts, and other visuals in this material are indicative artistic impressions for conceptual purposes only and do not represent actual photographs of the project or Units and is copyright of the Developer which shall not be reproduced or used without consent. Designs, finishes, colors, materials, dimensions, landscaping, amenities, and surrounding views may vary during design development or construction. Furniture, appliances, and decorative elements shown are illustrative and only included where expressly stated in the Sale and Purchase Agreement (SPA). This material does not constitute an offer, warranty, or representation beyond the specifications and obligations expressly set out in the SPA.





# Hilton.

RESIDENCES  
DUBAI MARITIME CITY

## Living Deck Level 2

Forest & Sea view



Dubai skyline & Atlantis view



Sea view



PRESTIGE ONE  
DEVELOPMENTS

All images, renderings, floor plans, layouts, and other visuals in this material are indicative artistic impressions for conceptual purposes only and do not represent actual photographs of the project or Units and is copyright of the Developer which shall not be reproduced or used without consent. Designs, finishes, colors, materials, dimensions, landscaping, amenities, and surrounding views may vary during design development or construction. Furniture, appliances, and decorative elements shown are illustrative and only included where expressly stated in the Sale and Purchase Agreement (SPA). This material does not constitute an offer, warranty, or representation beyond the specifications and obligations expressly set out in the SPA.





## Typical Level 3-8

Dubai skyline & Atlantis view

Forest & Sea view

Sea view

  
**PRESTIGE ONE**  
DEVELOPMENTS

All images, renderings, floor plans, layouts, and other visuals in this material are indicative artistic impressions for conceptual purposes only and do not represent actual photographs of the project or Units and is copyright of the Developer which shall not be reproduced or used without consent. Designs, finishes, colors, materials, dimensions, landscaping, amenities, and surrounding views may vary during design development or construction. Furniture, appliances, and decorative elements shown are illustrative and only included where expressly stated in the Sale and Purchase Agreement (SPA). This material does not constitute an offer, warranty, or representation beyond the specifications and obligations expressly set out in the SPA.





## Living Deck Level 9

Dubai skyline & Atlantis view

Forest & Sea view

Sea view

  
**PRESTIGE ONE**  
DEVELOPMENTS

All images, renderings, floor plans, layouts, and other visuals in this material are indicative artistic impressions for conceptual purposes only and do not represent actual photographs of the project or Units and is copyright of the Developer which shall not be reproduced or used without consent. Designs, finishes, colors, materials, dimensions, landscaping, amenities, and surrounding views may vary during design development or construction. Furniture, appliances, and decorative elements shown are illustrative and only included where expressly stated in the Sale and Purchase Agreement (SPA). This material does not constitute an offer, warranty, or representation beyond the specifications and obligations expressly set out in the SPA.





## Level 10

Forest & Sea view

Dubai skyline & Atlantis view

Sea view

  
**PRESTIGE ONE**  
DEVELOPMENTS

All images, renderings, floor plans, layouts, and other visuals in this material are indicative artistic impressions for conceptual purposes only and do not represent actual photographs of the project or Units and is copyright of the Developer which shall not be reproduced or used without consent. Designs, finishes, colors, materials, dimensions, landscaping, amenities, and surrounding views may vary during design development or construction. Furniture, appliances, and decorative elements shown are illustrative and only included where expressly stated in the Sale and Purchase Agreement (SPA). This material does not constitute an offer, warranty, or representation beyond the specifications and obligations expressly set out in the SPA.





## Typical Level 11-16

Dubai skyline & Atlantis view

Forest & Sea view

Sea view

  
**PRESTIGE ONE**  
DEVELOPMENTS

All images, renderings, floor plans, layouts, and other visuals in this material are indicative artistic impressions for conceptual purposes only and do not represent actual photographs of the project or Units and is copyright of the Developer which shall not be reproduced or used without consent. Designs, finishes, colors, materials, dimensions, landscaping, amenities, and surrounding views may vary during design development or construction. Furniture, appliances, and decorative elements shown are illustrative and only included where expressly stated in the Sale and Purchase Agreement (SPA). This material does not constitute an offer, warranty, or representation beyond the specifications and obligations expressly set out in the SPA.





## Level 17

Forest & Sea view



Dubai skyline & Atlantis view



Sea view



**PRESTIGE ONE**  
DEVELOPMENTS

All images, renderings, floor plans, layouts, and other visuals in this material are indicative artistic impressions for conceptual purposes only and do not represent actual photographs of the project or Units and is copyright of the Developer which shall not be reproduced or used without consent. Designs, finishes, colors, materials, dimensions, landscaping, amenities, and surrounding views may vary during design development or construction. Furniture, appliances, and decorative elements shown are illustrative and only included where expressly stated in the Sale and Purchase Agreement (SPA). This material does not constitute an offer, warranty, or representation beyond the specifications and obligations expressly set out in the SPA.





## Level 18

Forest & Sea view

Dubai skyline & Atlantis view

Sea view

  
**PRESTIGE ONE**  
DEVELOPMENTS

All images, renderings, floor plans, layouts, and other visuals in this material are indicative artistic impressions for conceptual purposes only and do not represent actual photographs of the project or Units and is copyright of the Developer which shall not be reproduced or used without consent. Designs, finishes, colors, materials, dimensions, landscaping, amenities, and surrounding views may vary during design development or construction. Furniture, appliances, and decorative elements shown are illustrative and only included where expressly stated in the Sale and Purchase Agreement (SPA). This material does not constitute an offer, warranty, or representation beyond the specifications and obligations expressly set out in the SPA.





## Typical Level 19-24

Dubai skyline & Atlantis view

Forest & Sea view

Sea view

**PRESTIGE ONE**  
DEVELOPMENTS

All images, renderings, floor plans, layouts, and other visuals in this material are indicative artistic impressions for conceptual purposes only and do not represent actual photographs of the project or Units and is copyright of the Developer which shall not be reproduced or used without consent. Designs, finishes, colors, materials, dimensions, landscaping, amenities, and surrounding views may vary during design development or construction. Furniture, appliances, and decorative elements shown are illustrative and only included where expressly stated in the Sale and Purchase Agreement (SPA). This material does not constitute an offer, warranty, or representation beyond the specifications and obligations expressly set out in the SPA.





## Level 25

Forest & Sea view



Dubai skyline & Atlantis view



Sea view



**PRESTIGE ONE**  
DEVELOPMENTS

All images, renderings, floor plans, layouts, and other visuals in this material are indicative artistic impressions for conceptual purposes only and do not represent actual photographs of the project or Units and is copyright of the Developer which shall not be reproduced or used without consent. Designs, finishes, colors, materials, dimensions, landscaping, amenities, and surrounding views may vary during design development or construction. Furniture, appliances, and decorative elements shown are illustrative and only included where expressly stated in the Sale and Purchase Agreement (SPA). This material does not constitute an offer, warranty, or representation beyond the specifications and obligations expressly set out in the SPA.



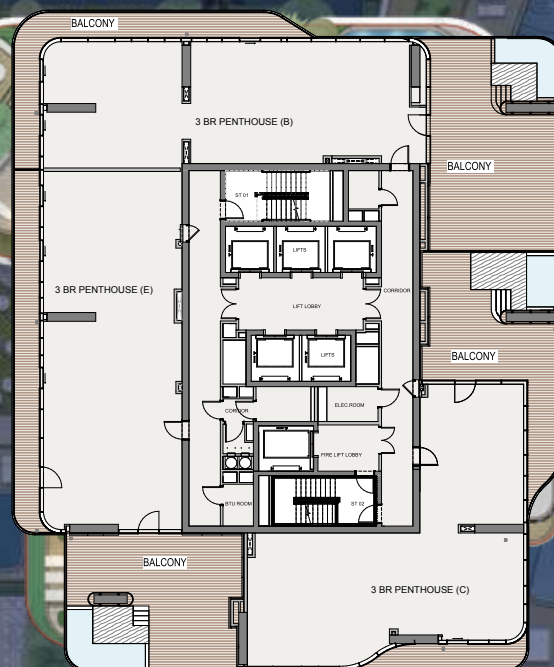


## Level 26

Forest & Sea view

Dubai skyline & Atlantis view

Sea view



**PRESTIGE ONE**  
DEVELOPMENTS

All images, renderings, floor plans, layouts, and other visuals in this material are indicative artistic impressions for conceptual purposes only and do not represent actual photographs of the project or Units and is copyright of the Developer which shall not be reproduced or used without consent. Designs, finishes, colors, materials, dimensions, landscaping, amenities, and surrounding views may vary during design development or construction. Furniture, appliances, and decorative elements shown are illustrative and only included where expressly stated in the Sale and Purchase Agreement (SPA). This material does not constitute an offer, warranty, or representation beyond the specifications and obligations expressly set out in the SPA.





## Typical Level 27-31

Dubai skyline & Atlantis view

Forest & Sea view

Sea view

  
**PRESTIGE ONE**  
DEVELOPMENTS

All images, renderings, floor plans, layouts, and other visuals in this material are indicative artistic impressions for conceptual purposes only and do not represent actual photographs of the project or Units and is copyright of the Developer which shall not be reproduced or used without consent. Designs, finishes, colors, materials, dimensions, landscaping, amenities, and surrounding views may vary during design development or construction. Furniture, appliances, and decorative elements shown are illustrative and only included where expressly stated in the Sale and Purchase Agreement (SPA). This material does not constitute an offer, warranty, or representation beyond the specifications and obligations expressly set out in the SPA.





## Level 32

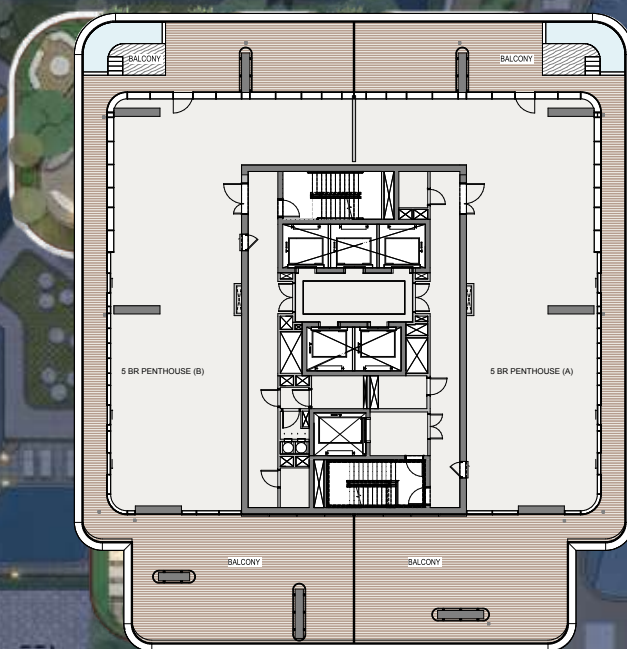
Forest & Sea view



Dubai skyline & Atlantis view



Sea view



**PRESTIGE ONE**  
DEVELOPMENTS

All images, renderings, floor plans, layouts, and other visuals in this material are indicative artistic impressions for conceptual purposes only and do not represent actual photographs of the project or Units and is copyright of the Developer which shall not be reproduced or used without consent. Designs, finishes, colors, materials, dimensions, landscaping, amenities, and surrounding views may vary during design development or construction. Furniture, appliances, and decorative elements shown are illustrative and only included where expressly stated in the Sale and Purchase Agreement (SPA). This material does not constitute an offer, warranty, or representation beyond the specifications and obligations expressly set out in the SPA.





## Level 33

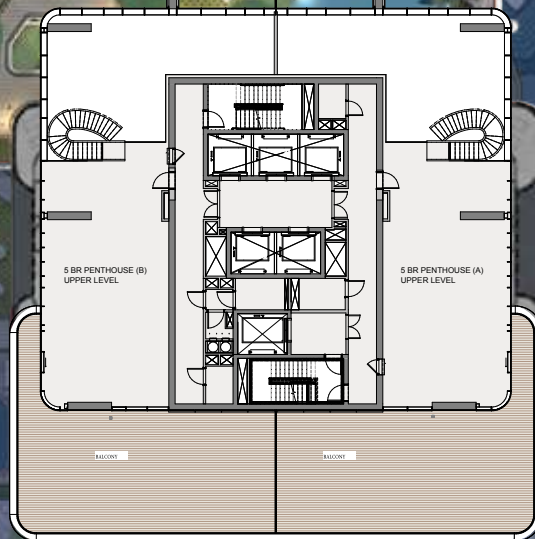
Forest & Sea view



Dubai skyline & Atlantis view



Sea view



**PRESTIGE ONE**  
DEVELOPMENTS

All images, renderings, floor plans, layouts, and other visuals in this material are indicative artistic impressions for conceptual purposes only and do not represent actual photographs of the project or Units and is copyright of the Developer which shall not be reproduced or used without consent. Designs, finishes, colors, materials, dimensions, landscaping, amenities, and surrounding views may vary during design development or construction. Furniture, appliances, and decorative elements shown are illustrative and only included where expressly stated in the Sale and Purchase Agreement (SPA). This material does not constitute an offer, warranty, or representation beyond the specifications and obligations expressly set out in the SPA.





## Roof Top Amenities

Dubai skyline & Atlantis view

Forest & Sea view

Sea view



**PRESTIGE ONE**  
DEVELOPMENTS

All images, renderings, floor plans, layouts, and other visuals in this material are indicative artistic impressions for conceptual purposes only and do not represent actual photographs of the project or Units and is copyright of the Developer which shall not be reproduced or used without consent. Designs, finishes, colors, materials, dimensions, landscaping, amenities, and surrounding views may vary during design development or construction. Furniture, appliances, and decorative elements shown are illustrative and only included where expressly stated in the Sale and Purchase Agreement (SPA). This material does not constitute an offer, warranty, or representation beyond the specifications and obligations expressly set out in the SPA.







# PRESTIGE ONE

DEVELOPMENTS

*The Heart of Every Location*

[prestigeone.ae](https://prestigeone.ae)



800 PRESTIGE

The "Hilton" brand and "Hilton" trademarks (collectively, the "Trademarks") are owned by Hilton Worldwide Manage Limited, an affiliate of Hilton Worldwide Holdings Inc. ("Hilton"). The Trademarks may in the future be transferred to other affiliates of Hilton. The Residential Units are not owned, developed, or sold by Hilton and Hilton does not make any representations, warranties or guaranties whatsoever with respect to the Hilton Residences Dubai Maritime City. The Licensee uses the "Hilton" brand and certain of the Trademarks under a limited, non-exclusive, non-transferable licence from Hilton or its affiliate(s). The licence may be terminated or may expire without renewal, in which case the Hilton Residences Dubai Maritime City will not be identified as a "Hilton" branded project and the Licensee will not have any rights to use the Trademarks.