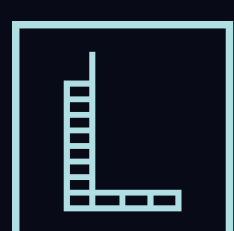


# HADLEY HEIGHTS 2

OLYMPIC CHAMPION  
EDITION

THE WORLD'S FIRST BRANDED RESIDENCE  
BY AN OLYMPIC CHAMPION

FACTSHEET



LEOS





# HADLEY HEIGHTS 2

Setting a new benchmark for futuristic sports living in Dubai Sports City. Engineered for tomorrow's champions, this visionary development fuses bold, aerodynamic architecture with next-generation wellness, performance, and digital innovation. Every element is crafted to inspire peak physical and mental performance, ideal for ambitious families driven by movement, mastery, and momentum.

From AI-powered fitness arenas and immersive content studios to esports-ready play zones and holistic wellness sanctuaries.

Blending the precision of British futuristic design with fluid, organic aesthetics, this smart, high-energy environment is more than a home it's a launchpad for champion.



# EXTERIORS





# INTERIORS





# INNOVATIVE AMENITIES



SKYLINE BEACH POOL



AQUA SOUND SPA



KIDS SPLASH POOL ZONE



SKY VITALITY DECK



FUTURE FIELD  
(YOUTH FOOTBALL CORNER)



STREET BASKETBALL



PADEL COURT



VITAL RUN TRACK  
& FITNESS PODS



BBQ & PIZZARIA



STARLIGHT LOUNGE



PARTY DECK & DJ STATION



AL-FRESCO DINING



SKY YOGA DECK



CREATOR POD



SMART PERFORMANCE GYM



VITA LOUNGE



VITAPLAY ARENA  
(GAMING & VR LOUNGE)



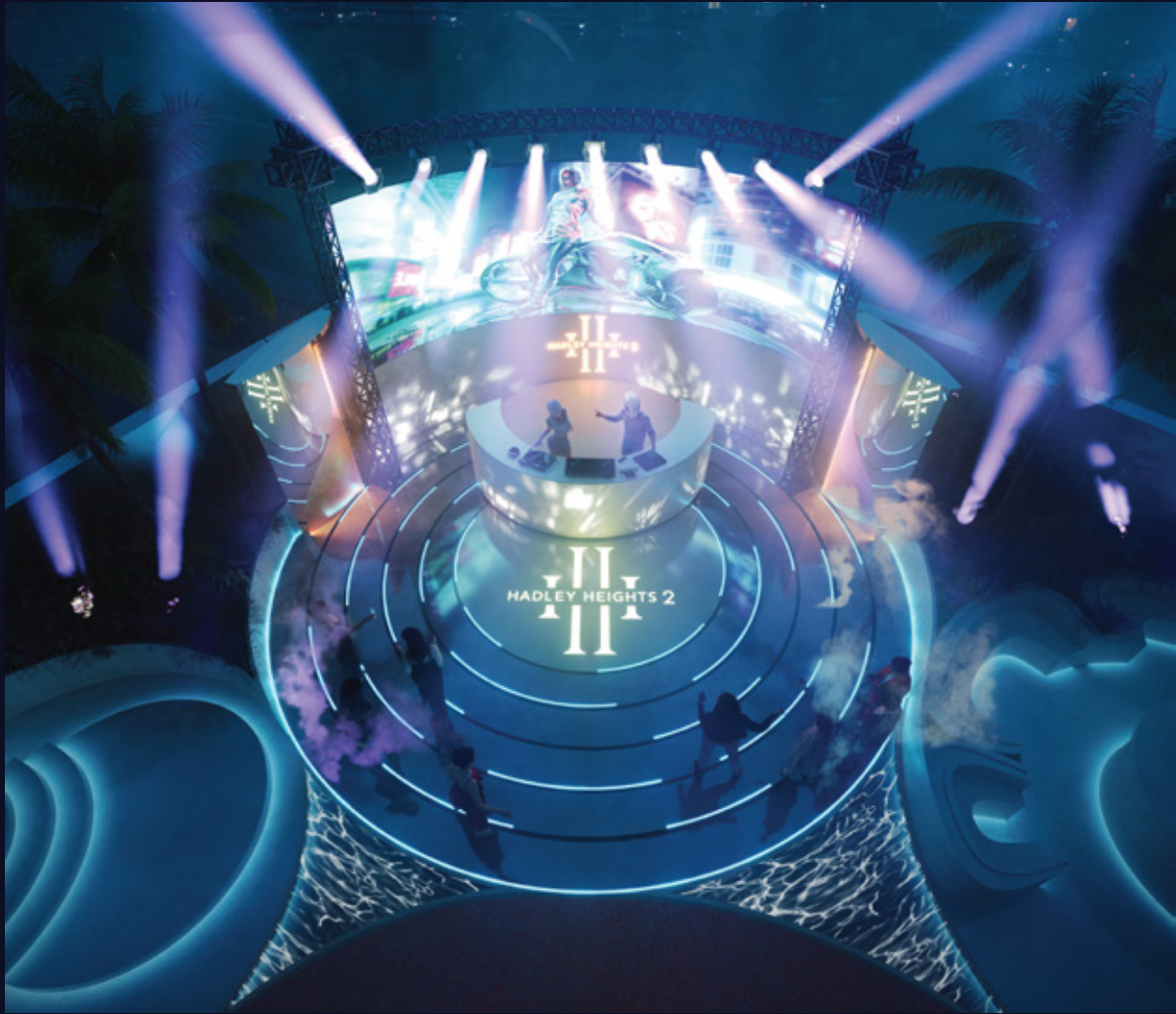
MOON WALK SPA



LEOS

UAE TOLL-FREE 800 535 | [WWW.LEOSDEVELOPMENTS.COM](http://WWW.LEOSDEVELOPMENTS.COM)







## UNIT DETAILS

Unit Type	Number of Units	Saleable Area Range	Ceiling Height	Starting Price
Studio (with Private Pool)	57	422 - 515 sq.ft	3.2m	AED 727,328
1 Bedroom (with Private Pool)	69	858 - 1,039 sq.ft	3.2m	AED 1,109,792
2 Bedrooms (with Private Pool)	93	1,208 - 1,390 sq.ft	3.2m	AED 1,580,626
3 Bedrooms (with Private Pool)	11	1,587 - 1,632 sq.ft	3.2m	AED 2,025,145



## Payment Plans

**50% - 50%**  
On Completion

60% - 40%

2 Years Post Completion

**65% - 35%**  
3 Years Post Completion



### Anticipated Completion Date

## Q4 - 2027

Located in one of Dubai's most premium and connected communities, Dubai Sports City offers seamless access to both of the city's airports, E311, Hessa Street, and key destinations like Dubai Marina and Palm Jumeirah, all within a 20-minute drive.

The upcoming Dubai Metro Line will further enhance connectivity, placing the city's business and leisure hubs even closer to home. Surrounded by elite schools, championship golf courses, and world-class sports academies, Dubai Sports City is a vibrant hub for families, professionals, and investors, where lifestyle, convenience, and longterm growth potential converge.

## LOCATION MAP

## 5 MINUTES

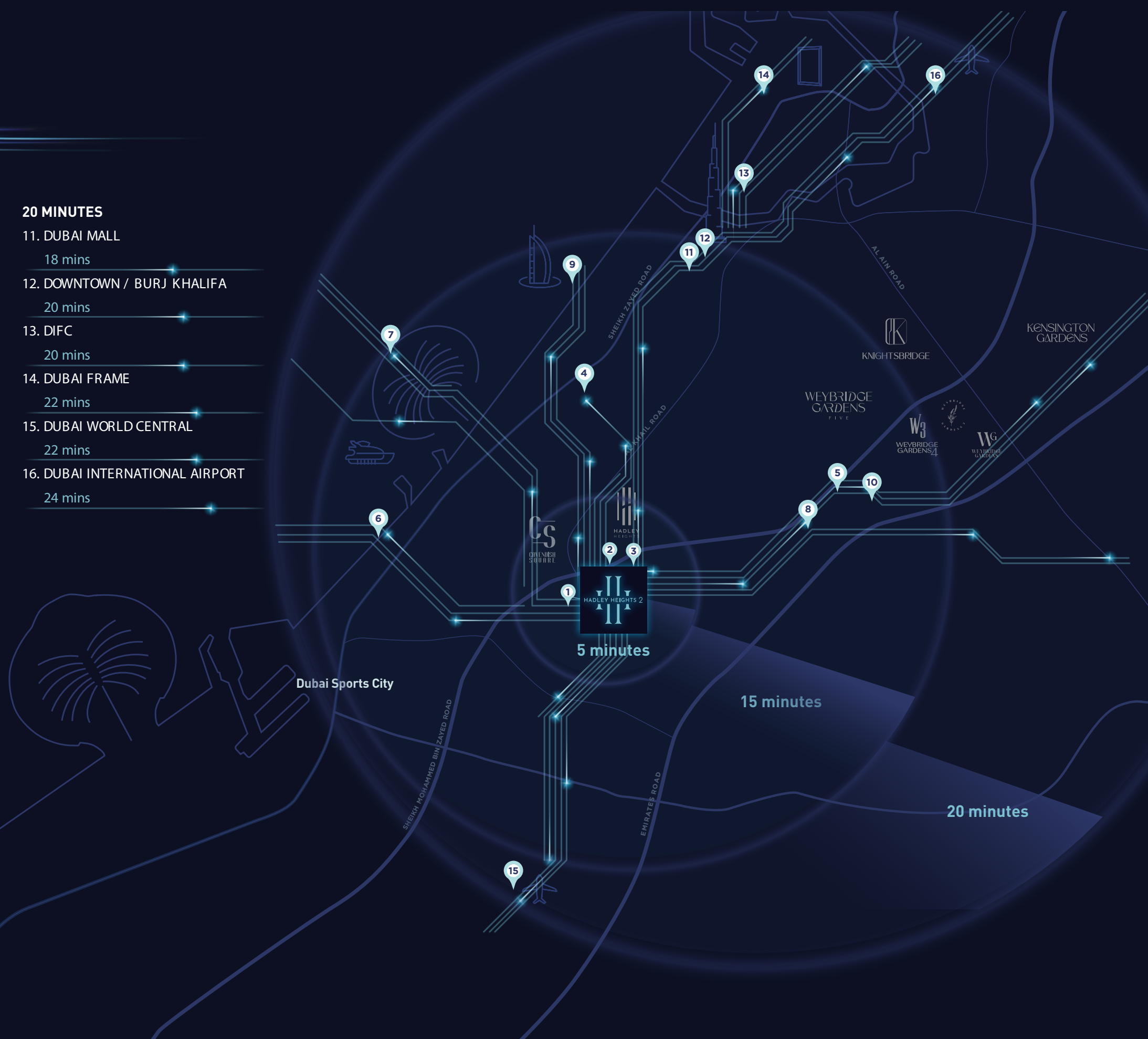
1. ELS GOLF CLUB DUBAI  
4 mins
2. INTERNATIONAL CRICKET STADIUM  
5 mins
3. ISD MULTI-SPORTS STADIUM  
6 mins

## 15 MINUTES

4. MALL OF THE EMIRATES  
12 mins
5. IMG WORLDS DUBAI  
14 mins
6. DUBAI MARINA  
14 mins
7. PALM JUMEIRAH  
14 mins
8. GLOBAL VILLAGE  
16 mins
9. BURJ AL ARAB / JUMEIRAH  
16 mins
10. AL HABTOOR POLO RESORT  
18 mins

## 20 MINUTES

- 
11. DUBAI MALL  
18 mins
12. DOWNTOWN / BURJ KHALIFA  
20 mins
13. DIFC  
20 mins
14. DUBAI FRAME  
22 mins
15. DUBAI WORLD CENTRAL  
22 mins
16. DUBAI INTERNATIONAL AIRPORT  
24 mins



# LEOS

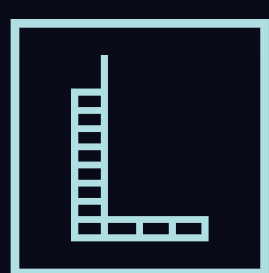
UAE TOLL-FREE 800 535 | [WWW.LEOSDEVELOPMENTS.COM](http://WWW.LEOSDEVELOPMENTS.COM)



OLYMPIC CHAMPION  
EDITION

UAE TOLL-FREE 800 535

[WWW.LEOSDEVELOPMENTS.COM](http://WWW.LEOSDEVELOPMENTS.COM)



LEOS