



L' H O R I Z O N

*by*

ELIE SAAB



QATAR'S *first Ever*  
BRANDED RESIDENCES BY THE  
LEGENDARY ELIE SAAB



AN  
OASIS OF  
CALM  
AND  
*Serenity*



DIVE  
INTO  
SWELLS  
OF  
*Luxury*



AN ODE TO  
*Excellence*

T H E   E L I E   S A A B   E X P E R I E N C E



# WELCOME TO *Qatar*

Qatar is a stunning blend of natural beauty and modern sophistication. Its landscape is a striking tapestry of golden deserts meeting the clear waters of the Arabian Gulf, creating a breathtaking coastal skyline dotted with world-class marinas and luxury resorts. The capital, Doha, showcases a harmonious fusion of contemporary architecture and traditional Arabian design, with its iconic skyline and pristine waterfront promenades. Beyond its visual appeal, Qatar offers unparalleled opportunities for investment, supported by a stable economy, strategic location, and a business-friendly environment.









# UNBELIEVABLE *Experiences*

Immerse yourself in Qatar's extraordinary experiences, where every corner reveals a new adventure. Wander through the vibrant Souqs, marvel at the masterpieces housed in the National Museum, Dune bash, sandboard, and camel ride through the golden deserts, then plunge into the beauty of the Banana Islands.

Whether you're exploring the serene mangroves of Al Thakira or diving into the turquoise waters of the Arabian Gulf, Qatar promises unforgettable experiences that blend cultural richness with natural beauty and modern luxury.









# LUSAIL *City*

4 M A N - M A D E I S L A N D S N O T H I N G  
S H O R T O F B R E A T H T A K I N G

Lusail City is a testament to the beauty and ambition of Qatar. This visionary metropolis is adorned with gleaming skyscrapers, cutting edge infrastructure, and smart technology, all set amidst four stunning man-made islands: Jabal Thuaileb Island, Qetaifan Islands North and South, and Al Maha Island.

Lusail's innovative architecture, combined with its 19 diverse districts offering residential, mixed-use, entertainment, and commercial spaces, creates a vibrant urban landscape. With 22 internationally rated luxury hotels, Lusail City promises a living experience that is both opulent and awe-inspiring, marking it as a true jewel of the Middle East.



QETAIFAN ISLAND NORTH

WHERE OPULENCE IS  
NOW *Undisputed*





ELIE SAAB

## CRAFTING A *Legacy*

ELIE SAAB is known for his captivating aesthetic and inspired sense of fashion, using intricate craftsmanship and sophisticated design to create glamorous silhouettes that exude bold style and a timeless feminine appeal. The first non-Italian designer invited to the Camera Nazionale della Moda in Rome in 1997, he chose Milan to launch his ready-to-wear line the following year. Elie Saab's fate in the fashion industry was sealed in Paris when admitted to the prestigious Chambre Syndical in 2003, and where he debuted his first ready-to-wear runway show in 2005.

Sought out by celebrities, royalty, and public figures alike, ELIE SAAB is one of the most significant global designers at the forefront of fashion. With ateliers and boutiques throughout the world, his fashion universe continues to grow into a leading luxury lifestyle brand, offering diversified lines, from ready-to-wear and bridal, to accessories, eyewear, children's wear, watches and fragrances. He recently established MAISON (2019), which offers signature furniture collections and exclusive interiors for global real-estate ventures.



# YOUR GATEWAY TO THE ELIE SAAB *Experience*

Investing in L'Horizon by ELIE SAAB at Qetaifan Island North grants you exclusive access to the ELIE SAAB Experience, a bespoke showroom where you can select from an exquisite range of MAISON furniture, accessories, and fragrances. This privilege enhances your living experience, ensuring your new home reflects the timeless elegance of the ELIE SAAB brand.



# OPULENCE BY THE *Shore*

It's easy to see why Qetaifan Island North is the perfect match for ELIE SAAB. Nestled right at the forefront of the island's shores, L'Horizon with interiors by ELIE SAAB are opulent seafront residences that gently punctuate the coast with clean and contemporary lines, softened by carefully selected palms and tropical foliage.





UNVEILING COASTAL  
*Grandeur*

ISLAND LIVING,  
REDEFINED IN LUXURY



DAR | ELIE SAAB  
GLOBAL

D I S C O V E R

# L' HORIZON

*by*

ELIE SAAB

Following the success of Les Vagues, ELIE SAAB collaborates with DarGlobal once again to elevate the living experience on Qatar's Qetaifan Island North.

QETAIFAN ISLAND **NORTH**



# SYMPHONY BY THE *Sea*

ELIE SAAB and DarGlobal deliver a harmonious conclusion to the golden coast – L’Horizon A and L’Horizon B, punctuate the final stretch of Qetaifan Island North. Like two glittering edifices, these waterfront sanctuaries offer ultimate privacy while being a masterclass in luxury living.

## L’HORIZON A

Drawing inspiration from golden horizons, L’Horizon A rises like a vision of shimmering glass, encircled by emerald tropical foliage on one side and the turquoise sea on the other. Every seafront sanctuary offers residents a view of life unfolding at the marina — observe the laid-back rhythm of coastal living, evoking a perpetual sense of resort-inspired serenity, while firmly ensconced in the all-encompassing privacy the property offers.

## L’HORIZON B

L’Horizon B, where seaside elegance meets perfection, offers unmatched panoramas from its prime corner location, overlooking both the lagoon and the sea. Designed for those who expect the extraordinary, its gracefully cascading lines, exclusive ocean scenery, and expansive terraces create endless opportunities for alfresco moments. Here, the breathtaking views transform your home into a daily retreat.



# A LANDMARK *Destination*

A man-made paradise on earth, spanning 1.3 million square meters of picturesque luxury, is destined to become internationally recognized—a landmark location and a symbol of Qatar's burgeoning future. The island's main artery, linking all zones together, is the Linear Park—an artificial saltwater lake flowing into the sea, where you can fish, boat, and live an unparalleled island lifestyle.





# SANCTUARY OF

*Luxury*

Qetaifan Island North is a waterfront hub to dream, to indulge, to relax. Luxurious beach resorts, private beaches, clubhouses, world-class boating facilities, boutique shopping experiences, a water park, and a living garden, to name just a few of the island's amenities, are designed to cater to your every whim.

## KEY DESTINATIONS WITHIN MINUTES

3 Min	MERYAL WATERPARK	25 Min	THE PEARL QATAR
10 Min	LUSAIL	25 Min	DOHA
18 Min	AL MAHA ISLAND	30 Min	HAMAD INTERNATIONAL AIRPORT

QETAIFAN ISLAND **NORTH**





# KEY *Highlights*



## PROXIMITY TO QATAR'S LARGEST THEME AND WATER PARK

Qetaifan Island, home to luxurious resorts and private beaches, is just steps away from the Guinness World Record-holding 76m water slide.



## SPECTACULAR BEACHFRONT

Boasting 7 kilometers of pristine beach shoreline, Qetaifan Island North provides stunning ocean views and endless recreational opportunities.

## VIBRANT MARINA

Experience the allure of a bustling marina, offering a dynamic hub for leisure and social activities.



## CHAMPIONSHIP GOLF

Home to a signature 18-hole championship golf course and clubhouse, providing a world-class experience for golf enthusiasts.

## COMMERCIAL HUB

The city offers a dynamic commercial landscape, with modern office spaces, retail centers, and business districts designed to attract leading companies and entrepreneurs.



## SURROUNDED BY LUXURY HOSPITALITY

Enjoy the privilege of being steps away from 5-star hospitality, where world-class service and sophistication enhance your lifestyle and investment value.









# THE WAVES AT YOUR *Window*

A lifetime of golden sunsets awaits you at L'Horizon by ELIE SAAB. Continuing the architectural legacy, L'Horizon extends the vision of luxury further along the coast culminating into two gently ascending glittering edifices of splendour. Floor-to-ceiling windows let the ocean vista flood in – a jaw-dropping, expansive panorama that will leave even the most hardened of visitors speechless.









# A PARADISE ON *Earth*

Qetaifan Island North is a place where leisure, adventure, and comfort converge for an unforgettable experience.



A Man-Made Island  
Spanning 1.3 Million  
Square Meters



A 1.3km Canal Running  
Through The Island



A Grand Waterpark With 36  
Different Rides And The Highest  
Slide In The World (76m)



Upscale Residential  
Communities



Luxury Hotels



Cafes And Restaurants



Souqs



Retail Plazas



Diverse Dining Options



Shopping Districts





# DESIGNER LEGACY *Interiors*

The interiors of L'Horizon showcase refined accents by ELIE SAAB MAISON, taking the glamour quotient up a notch. Shades of creams and grey, metals with shiny finishes, bronze, marble, and noble stones, reflect a level of exquisite craftsmanship rarely seen. These elements leave a lasting impression of refined elegance, embodying the legacy of the world's leading designer of Haute Couture, ELIE SAAB.



# EMBRACE THE SUNSET GLOW IN THE WINTER *Garden*

One of the most important features of L'Horizon by ELIE SAAB is enjoying the waves right outside your window. And with that, your very own Winter Garden, is born. Open it up during beautiful weather, where you can bask in the sunlight and breathtaking views.







# ELEGANT *Retreat*

Crafting spaces which encourage well-earned deep relaxation while enveloping residents in a sense of secluded sophistication, L'Horizon by ELIE SAAB feature elegant design details and panoramic views to create a serene retreat from the world beyond.







# TAILORED *Amenities*

The amenities at L'Horizon are tailored to your individual needs.  
You'll be welcomed with



State of the art fitness center



Luxury retail



Infinity swimming pool



24hrs reception desk



Landscaped community  
courtyard with sea views



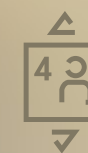
Public areas furniture designed  
and selected by ELIE SAAB



A la carte concierge services



Parking for all units



4 Passenger elevators, inclusive  
of a service elevator to all floors







16 REASONS TO *Invest*  
IN L'HORIZON BY ELIE SAAB

01 Freehold Property

02 0% Property Tax

03 1% Registration Fees

04 100% Foreign Ownership

05 Situated in Qetaifan  
Island North

06 Only 30 minutes away  
from Hamad International  
Airport, the top-rated  
airport in the world

07 The first branded residences  
in Qatar

08 Waterfront residences and  
winter garden

09 Interiors by ELIE SAAB

10 Uninterrupted views of the  
coast and the Doha skyline

11 Easy access to all touristic,  
shopping, and entertainment  
landmarks in Qatar

12 Stable economy with the  
highest GDP per capita in  
the world

13 Permanent residency. With an  
investment of 1M USD access  
to world class healthcare,  
education, and the ability to  
live, work and study

14 Ranking number one in  
education in the Arab Region

15 Quality healthcare for all and  
one of the safest countries  
in the world

16 Hosted the successful  
World Cup 2022 and the  
2023 Asian Cup



# L'HORIZON

*by*

ELIE SAAB

## F L O O R P L A N S

The following floor plans are only applicable to Building A and Building B. All pictures, plans, layouts, information, data and details included in this brochure are indicative only and may change at any time up to the final 'as built' status in accordance with final designs of the project, regulatory approvals and planning permissions. All accessories and interior finishes such as wallpaper, chandeliers, furniture, electronics, white goods, curtains, hard and soft landscaping, pavements, features, gym, swimming pool(s) and other elements displayed in the brochure, or within the show apartment or between the plot boundary and the unit, are not part of the unit and are shown for illustrative purposes only.



# L'HORIZON *Building A*

F L O O R   P L A N S









L'HORIZON

by

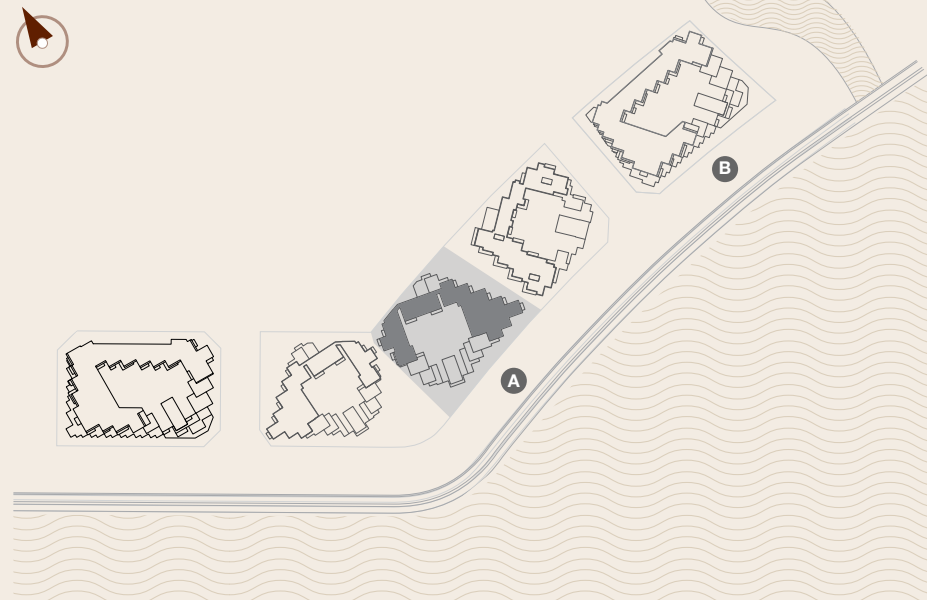
ELIE SAAB

1 BEDROOM + DEN

BUILDING A - TYPE A1

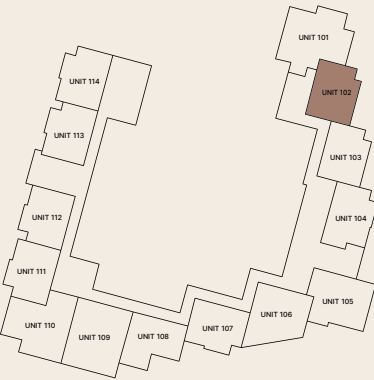
FLOORS	1, 2, 3, 4, 5	
RESIDENCE	79 sqm	850 sqft
BALCONY / TERRACE	12 - 134 sqm	129 - 1,442 sqft
TOTAL	92 - 213 sqm	990 - 2,293 sqft

MASTERPLAN



The following floor plans are only applicable to Building A. All pictures, plans, layouts, information, data and details included in this brochure are indicative only and may change at any time up to the final 'as built' status in accordance with final designs of the project, regulatory approvals and planning permissions. All accessories and interior finishes such as wallpaper, chandeliers, furniture, electronics, white goods, curtains, hard and soft landscaping, pavements, features, gym, swimming pool(s) and other elements displayed in the brochure, or within the show apartment or between the plot boundary and the unit, are not part of the unit and are shown for illustrative purposes only.

FLOOR 1



FLOOR 3



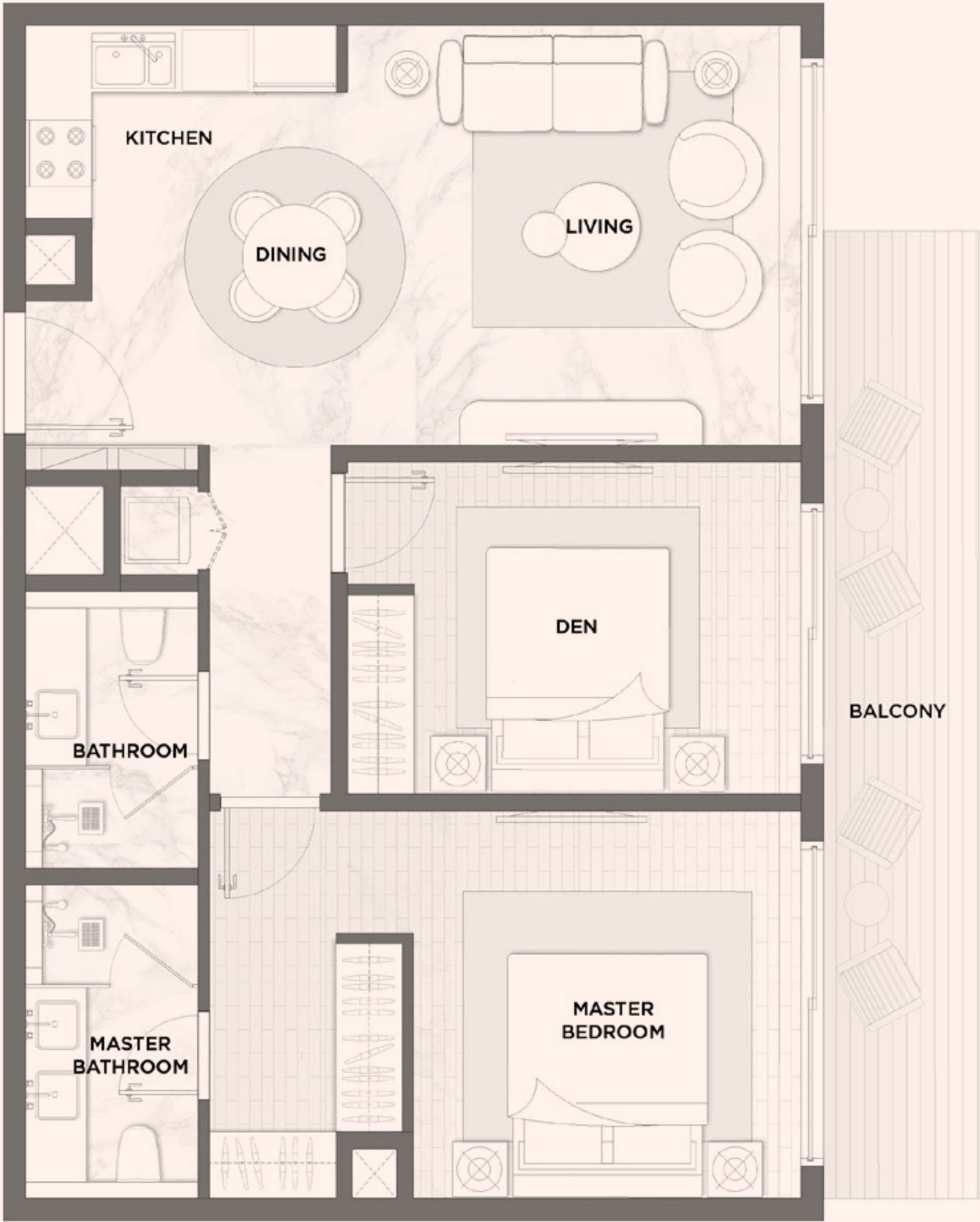
FLOOR 5



FLOOR 2



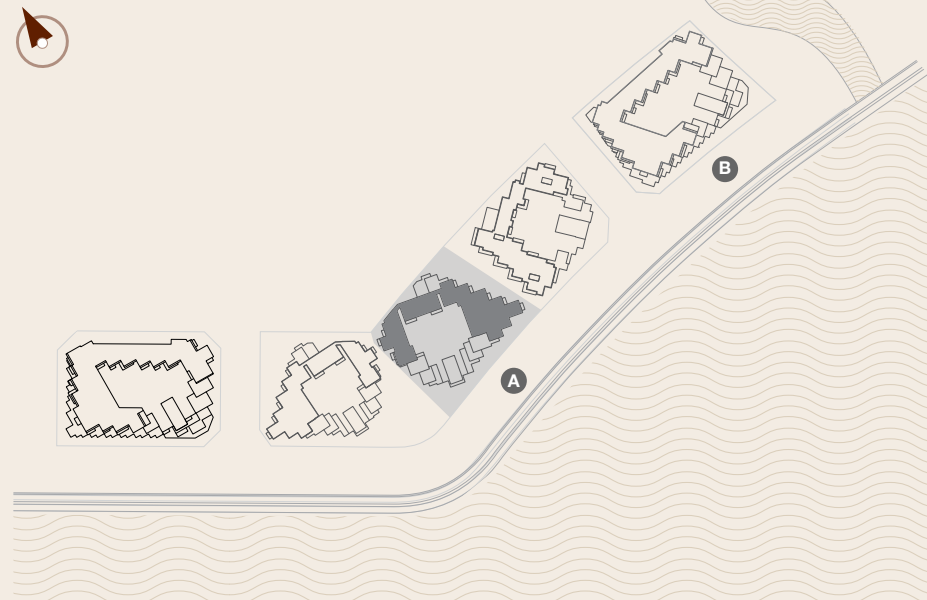
FLOOR 4





L'HORIZON <i>by</i> ELIE SAAB		
1 BEDROOM + DEN BUILDING A - TYPE A2		
FLOORS	1, 2, 3, 4	
RESIDENCE	97 sqm	1,044 sqft
BALCONY / TERRACE	10 - 14 sqm	108 - 151 sqft
TOTAL	107 - 111 sqm	1,152 - 1,195 sqft

MASTERPLAN



The following floor plans are only applicable to Building A. All pictures, plans, layouts, information, data and details included in this brochure are indicative only and may change at any time up to the final 'as built' status in accordance with final designs of the project, regulatory approvals and planning permissions. All accessories and interior finishes such as wallpaper, chandeliers, furniture, electronics, white goods, curtains, hard and soft landscaping, pavements, features, gym, swimming pool(s) and other elements displayed in the brochure, or within the show apartment or between the plot boundary and the unit, are not part of the unit and are shown for illustrative purposes only.

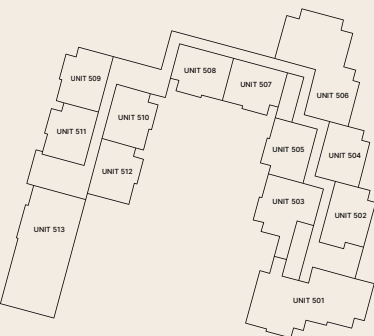
FLOOR 1



FLOOR 3



FLOOR 5



FLOOR 2



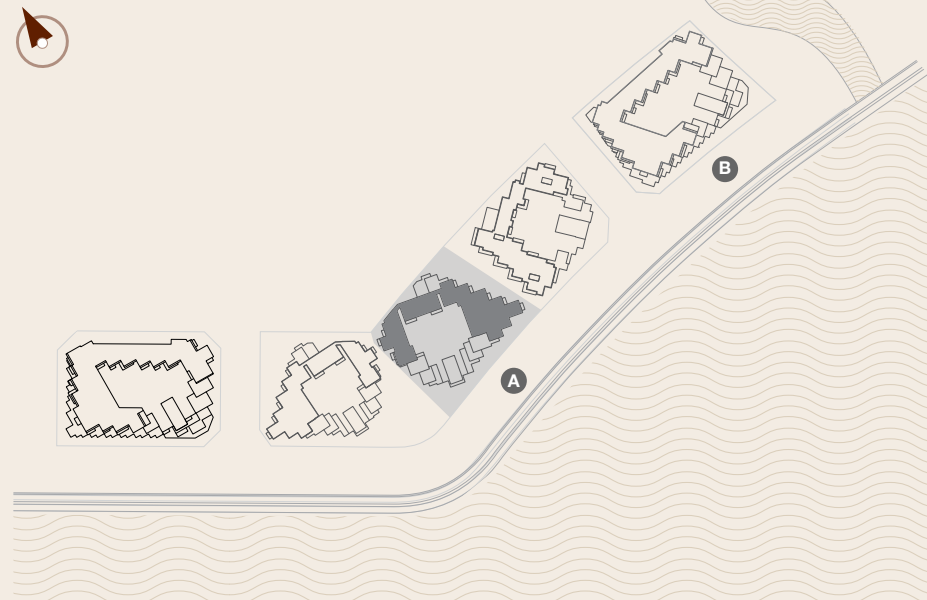
FLOOR 4





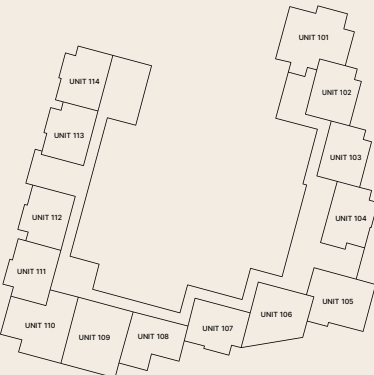
L'HORIZON <i>by</i> ELIE SAAB		
1 BEDROOM + DEN BUILDING A - TYPE A3		
FLOOR		5
RESIDENCE	102 sqm	1,098 sqft
BALCONY / TERRACE	122 sqm	1,313 sqft
TOTAL	224 sqm	2,626 sqft

MASTERPLAN

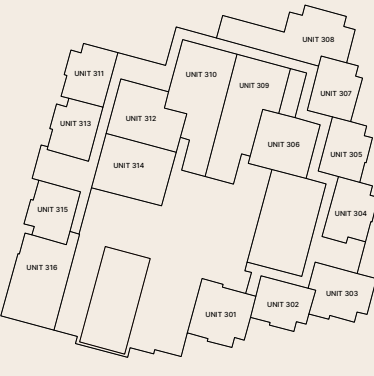


The following floor plans are only applicable to Building A. All pictures, plans, layouts, information, data and details included in this brochure are indicative only and may change at any time up to the final 'as built' status in accordance with final designs of the project, regulatory approvals and planning permissions. All accessories and interior finishes such as wallpaper, chandeliers, furniture, electronics, white goods, curtains, hard and soft landscaping, pavements, features, gym, swimming pool(s) and other elements displayed in the brochure, or within the show apartment or between the plot boundary and the unit, are not part of the unit and are shown for illustrative purposes only.

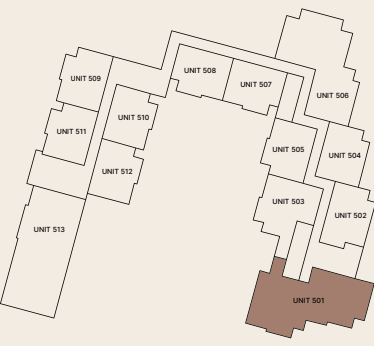
FLOOR 1



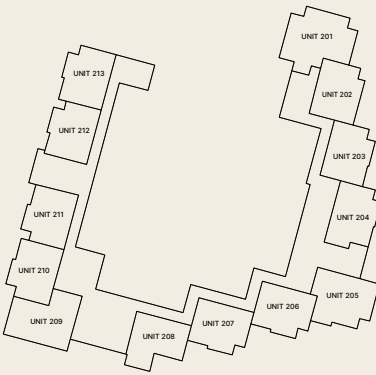
FLOOR 3



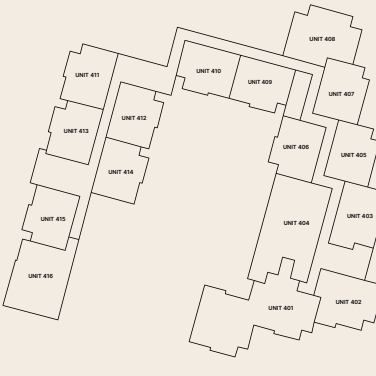
FLOOR 5



FLOOR 2



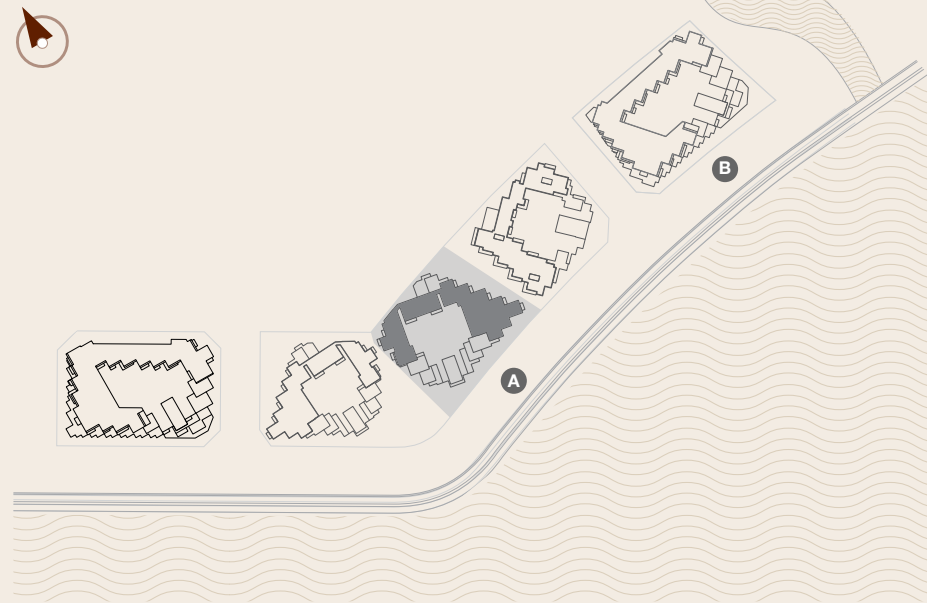
FLOOR 4





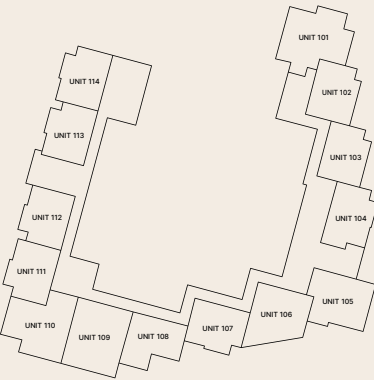
L'HORIZON <i>by</i> ELIE SAAB		
1 BEDROOM + DEN BUILDING A - TYPE A4		
FLOOR		3
RESIDENCE	105 sqm	1,130 sqft
BALCONY / TERRACE	9 sqm	97 sqft
TOTAL	115 sqm	1,239 sqft

MASTERPLAN

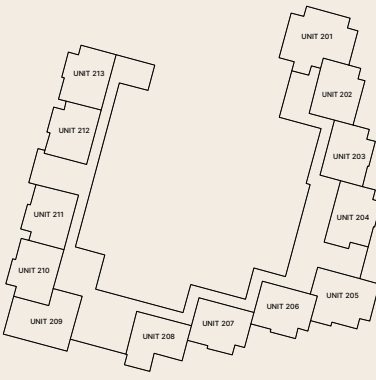


The following floor plans are only applicable to Building A. All pictures, plans, layouts, information, data and details included in this brochure are indicative only and may change at any time up to the final 'as built' status in accordance with final designs of the project, regulatory approvals and planning permissions. All accessories and interior finishes such as wallpaper, chandeliers, furniture, electronics, white goods, curtains, hard and soft landscaping, pavements, features, gym, swimming pool(s) and other elements displayed in the brochure, or within the show apartment or between the plot boundary and the unit, are not part of the unit and are shown for illustrative purposes only.

FLOOR 1



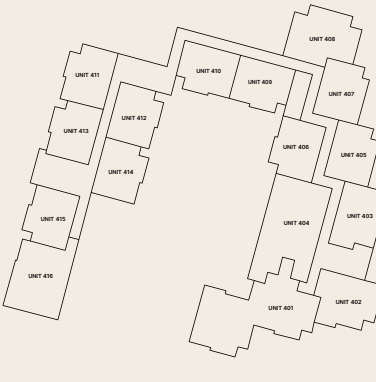
FLOOR 2



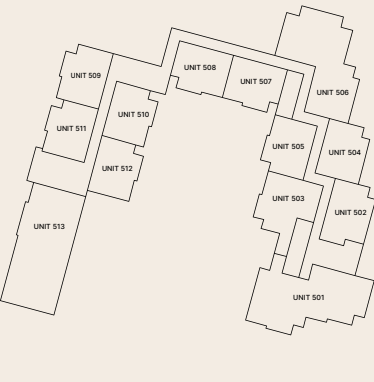
FLOOR 3



FLOOR 4



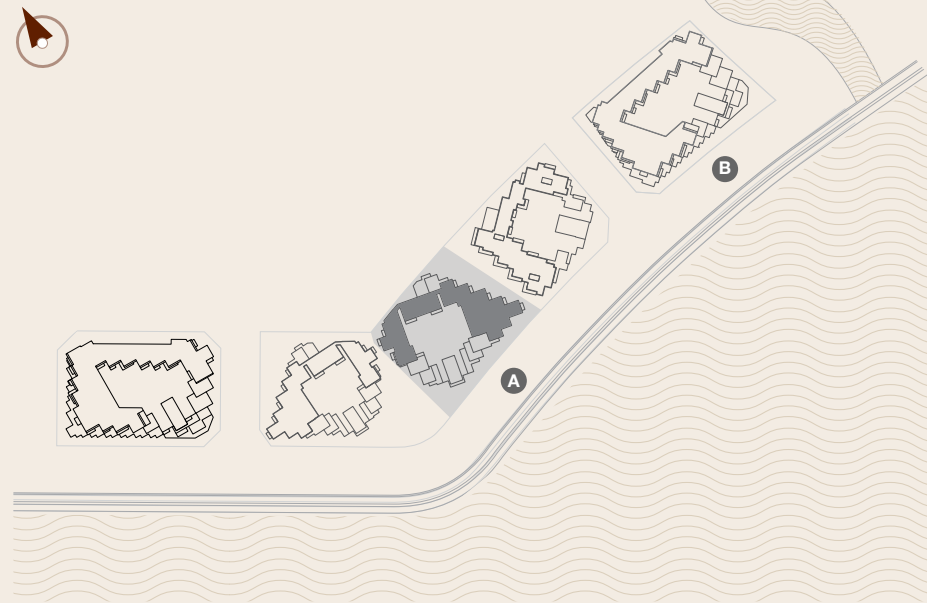
FLOOR 5





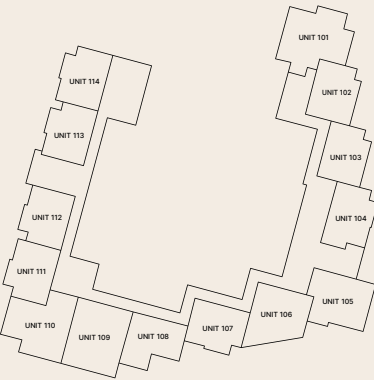
L'HORIZON <i>by</i> ELIE SAAB		
1 BEDROOM + DEN BUILDING A - TYPE A5		
FLOORS		4, 5
RESIDENCE	106 sqm	1,141 sqft
BALCONY / TERRACE	9 - 55 sqm	97 - 592 sqft
TOTAL	115 - 160 sqm	1,237 - 1722 sqft

MASTERPLAN

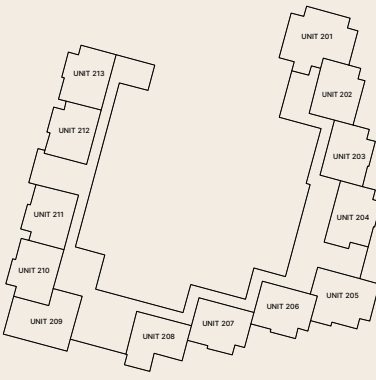


The following floor plans are only applicable to Building A. All pictures, plans, layouts, information, data and details included in this brochure are indicative only and may change at any time up to the final 'as built' status in accordance with final designs of the project, regulatory approvals and planning permissions. All accessories and interior finishes such as wallpaper, chandeliers, furniture, electronics, white goods, curtains, hard and soft landscaping, pavements, features, gym, swimming pool(s) and other elements displayed in the brochure, or within the show apartment or between the plot boundary and the unit, are not part of the unit and are shown for illustrative purposes only.

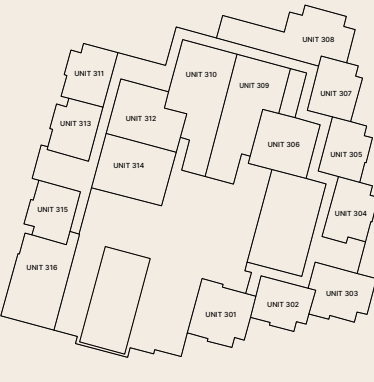
FLOOR 1



FLOOR 2



FLOOR 3



FLOOR 4



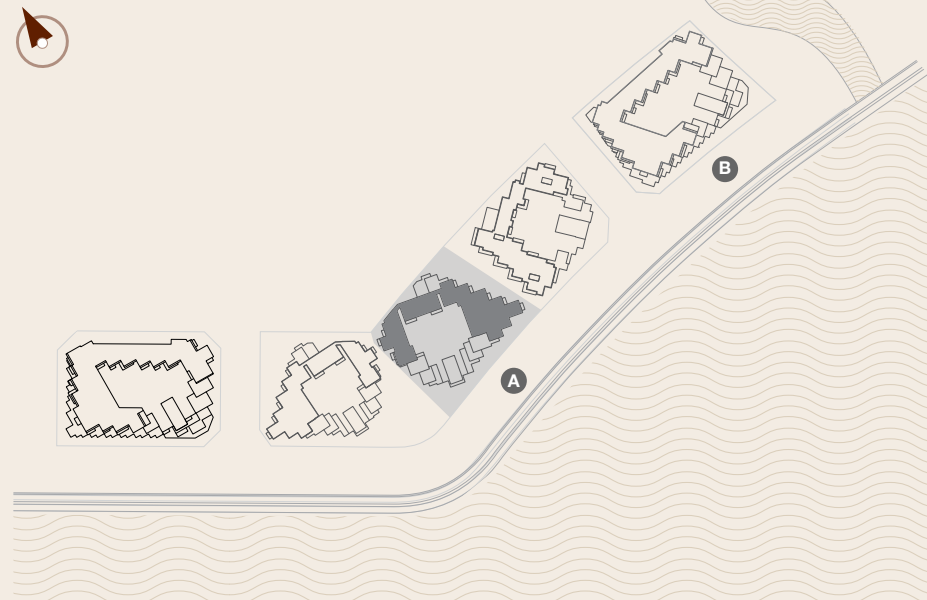
FLOOR 5





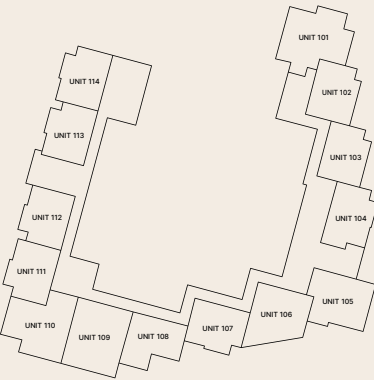
L'HORIZON <i>by</i> ELIE SAAB		
1 BEDROOM + DEN BUILDING A - TYPE A6		
FLOORS		4
RESIDENCE	101 sqm	1,087 sqft
BALCONY / TERRACE	134 sqm	1,442 sqft
TOTAL	235 sqm	2,529 sqft

MASTERPLAN

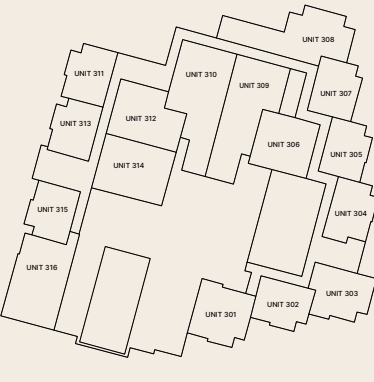


The following floor plans are only applicable to Building A. All pictures, plans, layouts, information, data and details included in this brochure are indicative only and may change at any time up to the final 'as built' status in accordance with final designs of the project, regulatory approvals and planning permissions. All accessories and interior finishes such as wallpaper, chandeliers, furniture, electronics, white goods, curtains, hard and soft landscaping, pavements, features, gym, swimming pool(s) and other elements displayed in the brochure, or within the show apartment or between the plot boundary and the unit, are not part of the unit and are shown for illustrative purposes only.

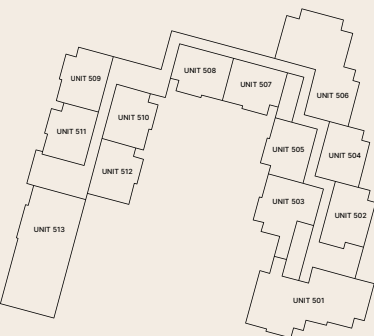
FLOOR 1



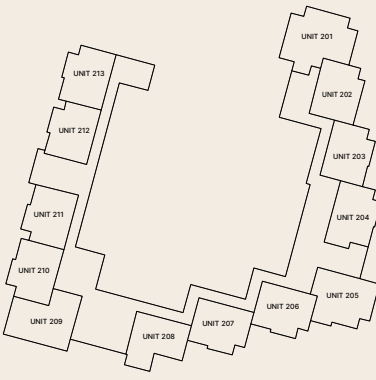
FLOOR 3



FLOOR 5



FLOOR 2



FLOOR 4





L'HORIZON  
*by*  
ELIE SAAB

**1 BEDROOM + DEN**  
**BUILDING A - TYPE A7**

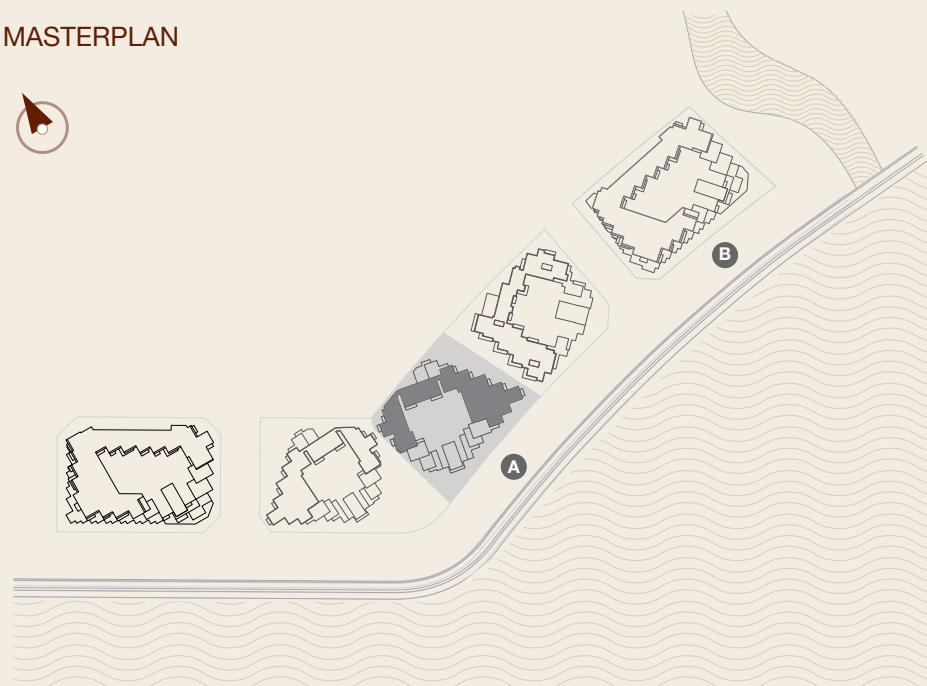
FLOORS	1, 2, 3, 4, 5
--------	---------------

**RESIDENCE** 86 sqm 926 sqft

BALCONY / TERRACE	8 sqm	86 sqft
-------------------	-------	---------

TOTAL	95 sqm	1,022 sqft
-------	--------	------------

## MASTERPLAN



The following floor plans are only applicable to Building A. All pictures, plans, layouts, information, data and details included in this brochure are indicative only and may change at any time up to the final 'as built' status in accordance with final designs of the project, regulatory approvals and planning permissions. All accessories and interior finishes such as wallpaper, chandeliers, furniture, electronics, white goods, curtains, hard and soft landscaping, pavements, features, gym, swimming pool(s) and other elements displayed in the brochure, or within the show apartment or between the plot boundary and the unit are not part of the unit and are shown for illustrative purposes only.

## FLOOR 1



## FLOOR 2



## FLOOR 3



## FLOOR 4



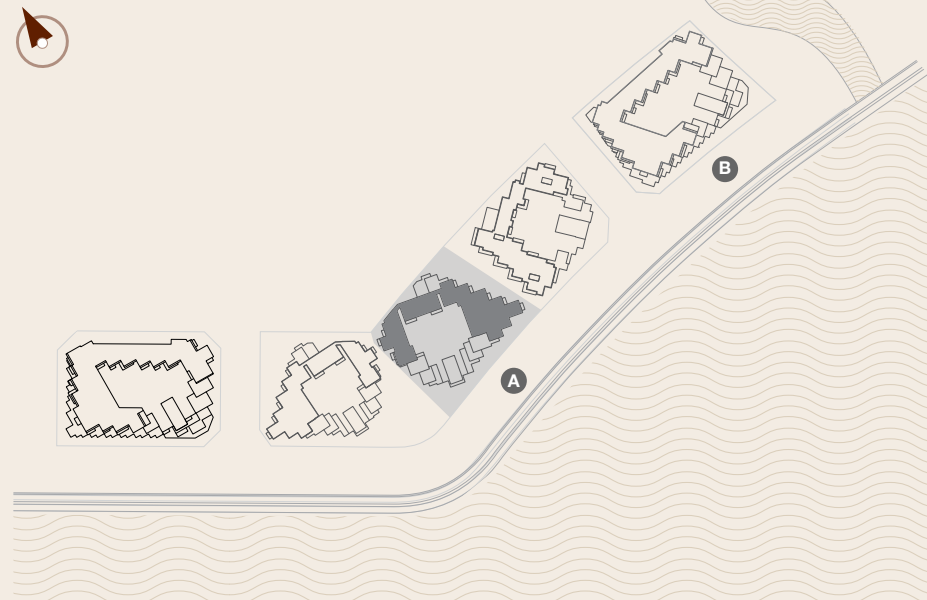
## FLOOR 5





L'HORIZON <i>by</i> ELIE SAAB		
1 BEDROOM + DEN BUILDING A - TYPE A8		
FLOOR		1
RESIDENCE	90 sqm	967 sqft
BALCONY / TERRACE	51 sqm	549 sqft
TOTAL	140 sqm	151 sqft

MASTERPLAN

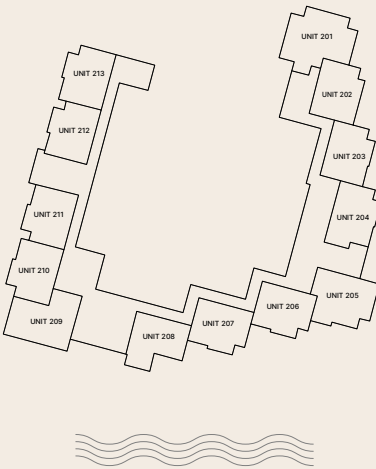


The following floor plans are only applicable to Building A. All pictures, plans, layouts, information, data and details included in this brochure are indicative only and may change at any time up to the final 'as built' status in accordance with final designs of the project, regulatory approvals and planning permissions. All accessories and interior finishes such as wallpaper, chandeliers, furniture, electronics, white goods, curtains, hard and soft landscaping, pavements, features, gym, swimming pool(s) and other elements displayed in the brochure, or within the show apartment or between the plot boundary and the unit, are not part of the unit and are shown for illustrative purposes only.

FLOOR 1



FLOOR 2



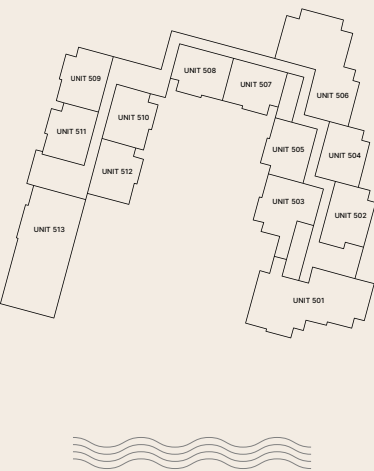
FLOOR 3



FLOOR 4



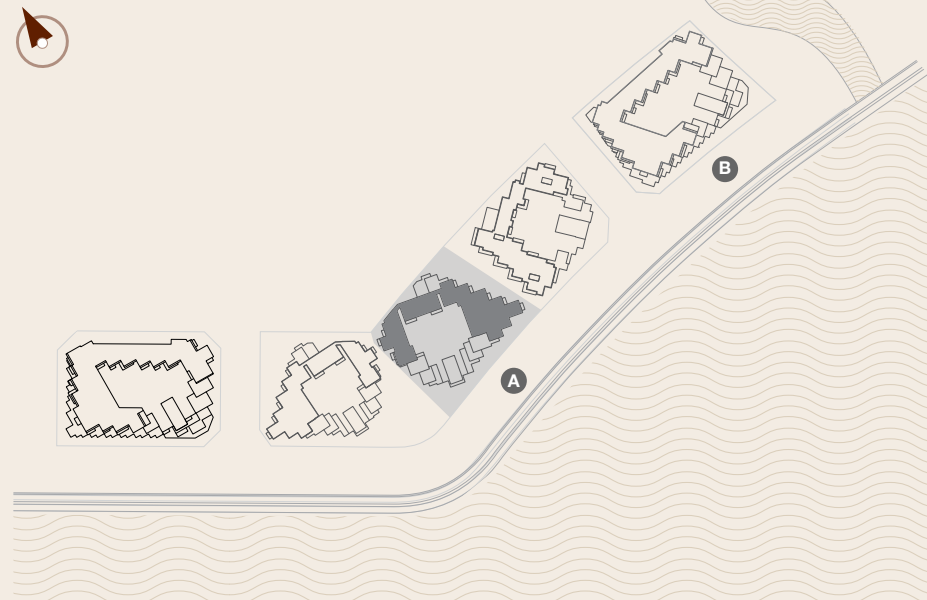
FLOOR 5





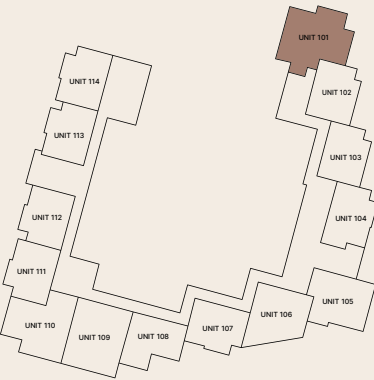
L'HORIZON <i>by</i> ELIE SAAB		
	FLOORS	1, 2
RESIDENCE	111 sqm	1,195 sqft
BALCONY / TERRACE	17 sqm	183 sqft
TOTAL	128 sqm	1,378 sqft

MASTERPLAN

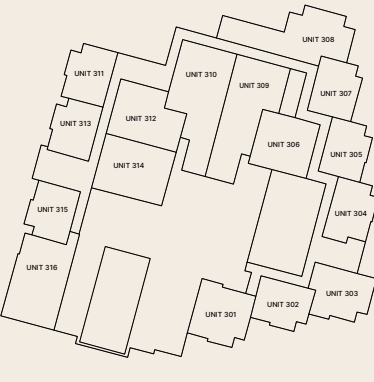


The following floor plans are only applicable to Building A. All pictures, plans, layouts, information, data and details included in this brochure are indicative only and may change at any time up to the final 'as built' status in accordance with final designs of the project, regulatory approvals and planning permissions. All accessories and interior finishes such as wallpaper, chandeliers, furniture, electronics, white goods, curtains, hard and soft landscaping, pavements, features, gym, swimming pool(s) and other elements displayed in the brochure, or within the show apartment or between the plot boundary and the unit, are not part of the unit and are shown for illustrative purposes only.

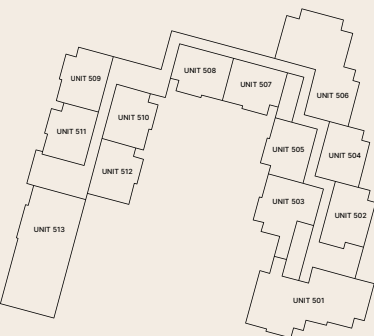
FLOOR 1



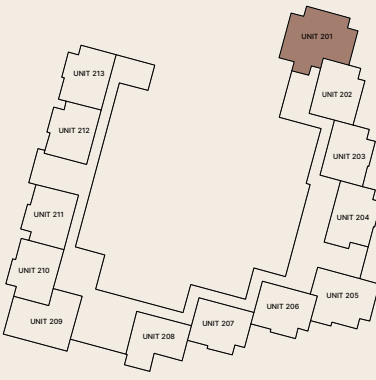
FLOOR 3



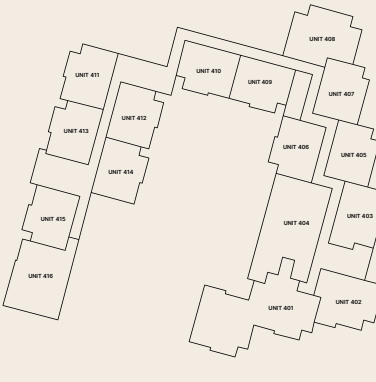
FLOOR 5



FLOOR 2



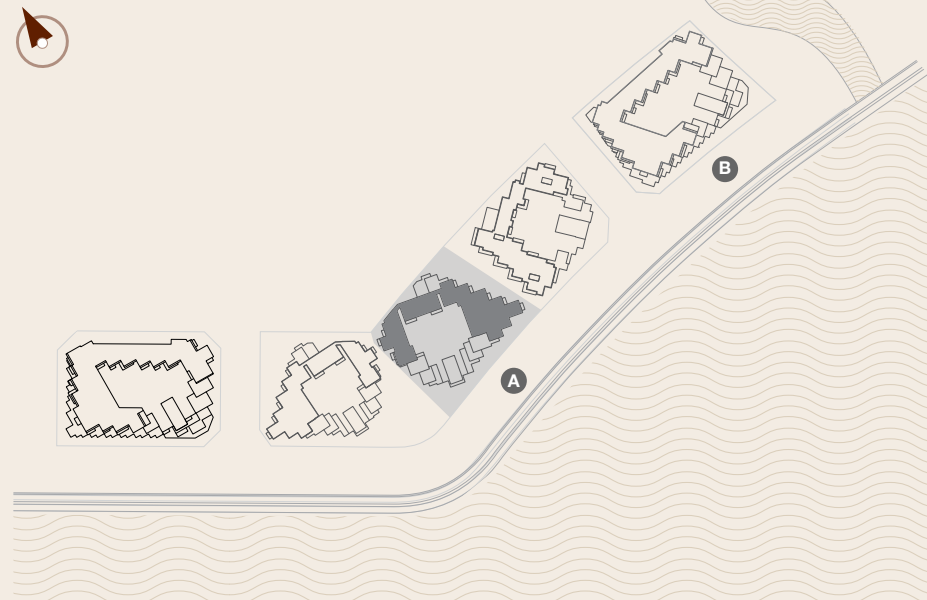
FLOOR 4





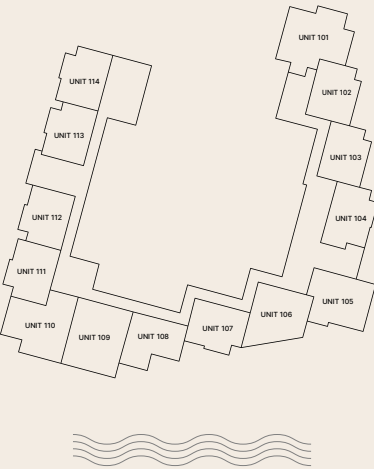
L'HORIZON <i>by</i> ELIE SAAB			1 BEDROOM + DEN BUILDING A - TYPE B1	
FLOORS			3, 4	
RESIDENCE		104 sqm	1,119 sqft	
BALCONY / TERRACE		17 sqm	183 sqft	
TOTAL		121 sqm	1,302 sqft	

MASTERPLAN

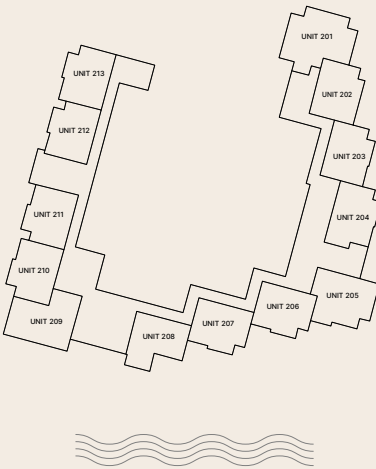


The following floor plans are only applicable to Building A. All pictures, plans, layouts, information, data and details included in this brochure are indicative only and may change at any time up to the final 'as built' status in accordance with final designs of the project, regulatory approvals and planning permissions. All accessories and interior finishes such as wallpaper, chandeliers, furniture, electronics, white goods, curtains, hard and soft landscaping, pavements, features, gym, swimming pool(s) and other elements displayed in the brochure, or within the show apartment or between the plot boundary and the unit, are not part of the unit and are shown for illustrative purposes only.

FLOOR 1



FLOOR 2



FLOOR 3



FLOOR 4



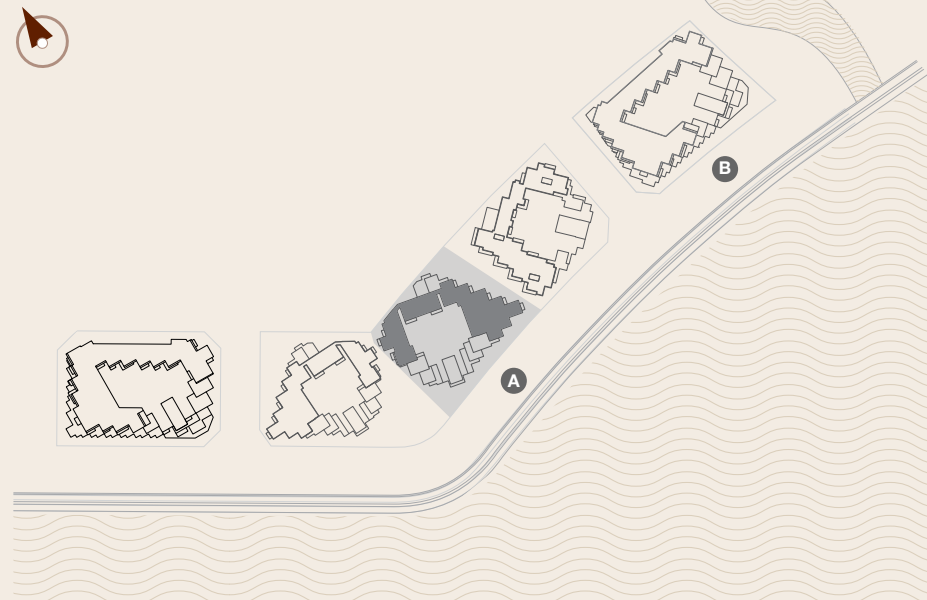
FLOOR 5





L'HORIZON <i>by</i> ELIE SAAB		
1 BEDROOM + DEN BUILDING A - TYPE C		
FLOORS	1, 2	
RESIDENCE	88 sqm	947 sqft
BALCONY / TERRACE	22 - 42 sqm	237 - 452 sqft
TOTAL	111 - 130 sqm	1,195 - 1,399 sqft

MASTERPLAN

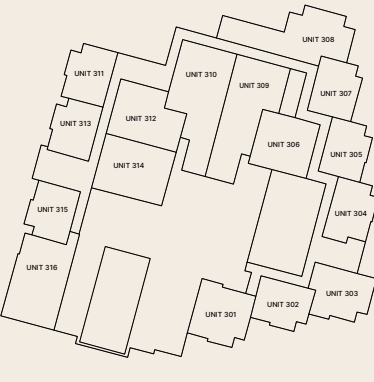


The following floor plans are only applicable to Building A. All pictures, plans, layouts, information, data and details included in this brochure are indicative only and may change at any time up to the final 'as built' status in accordance with final designs of the project, regulatory approvals and planning permissions. All accessories and interior finishes such as wallpaper, chandeliers, furniture, electronics, white goods, curtains, hard and soft landscaping, pavements, features, gym, swimming pool(s) and other elements displayed in the brochure, or within the show apartment or between the plot boundary and the unit, are not part of the unit and are shown for illustrative purposes only.

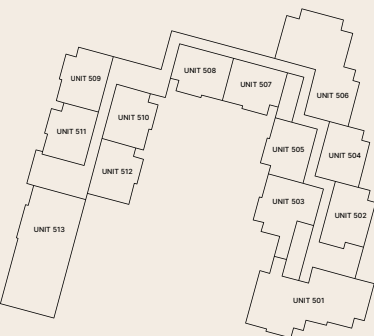
FLOOR 1



FLOOR 3



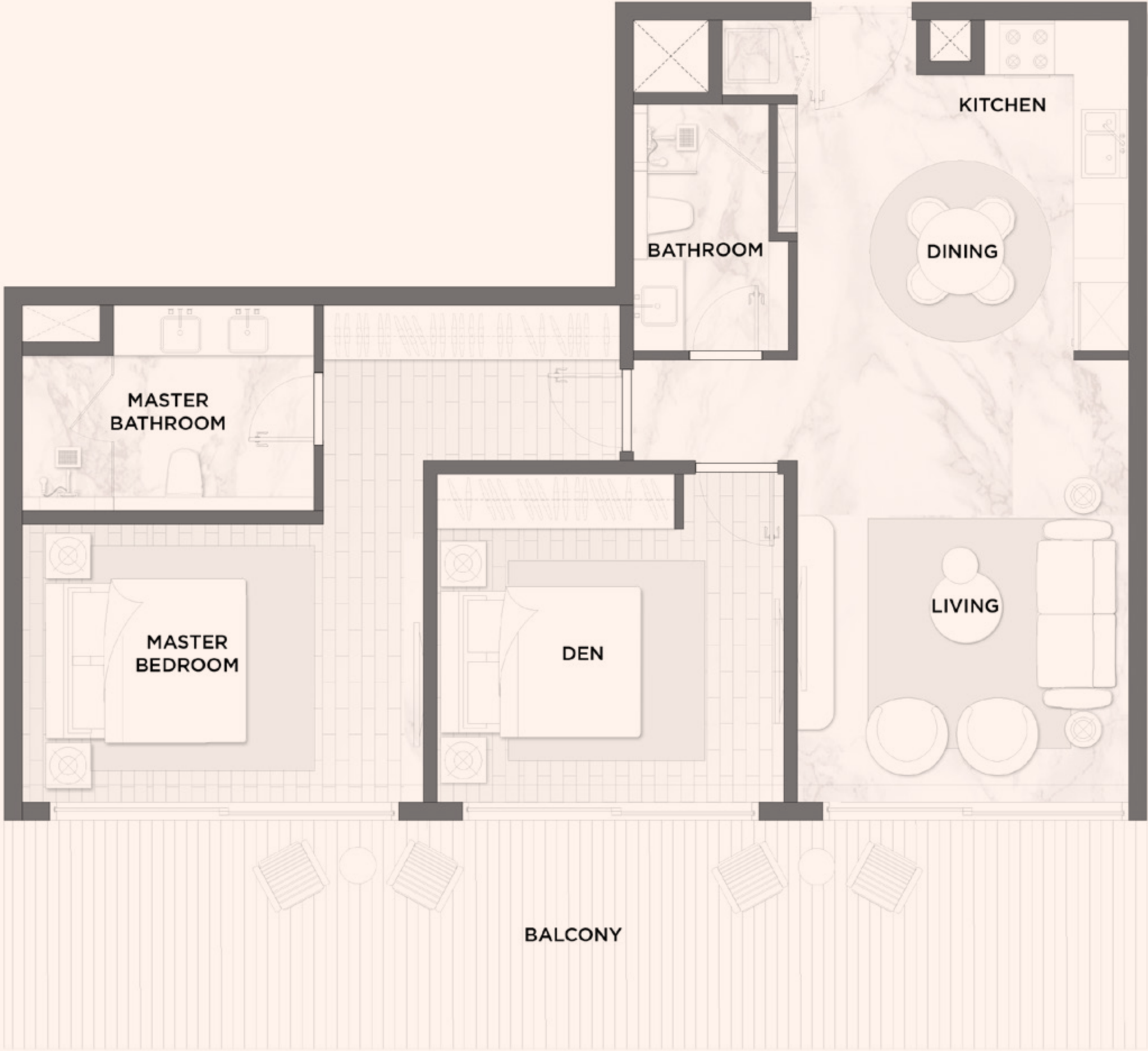
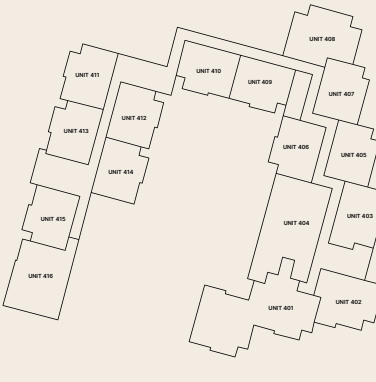
FLOOR 5



FLOOR 2



FLOOR 4





L'HORIZON

by

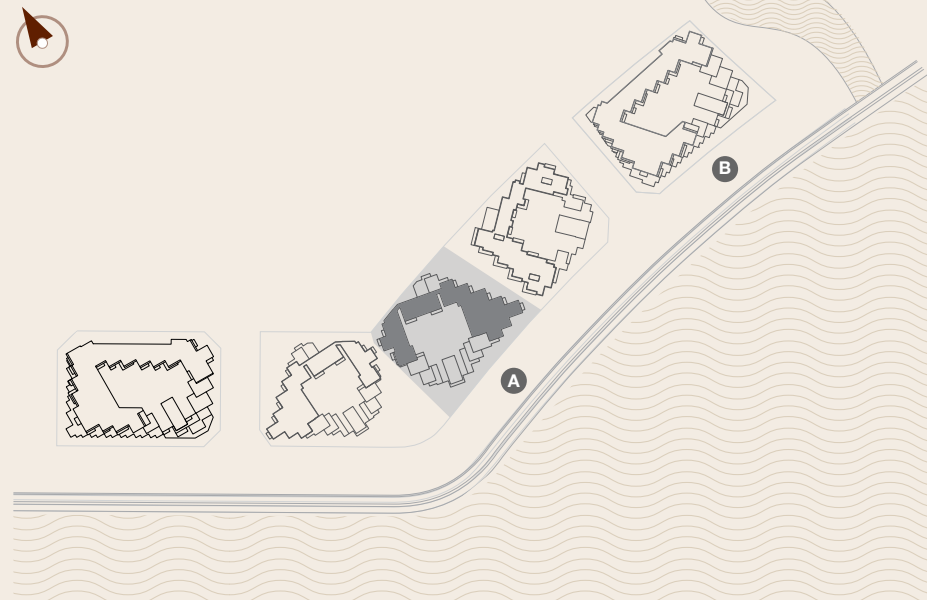
ELIE SAAB

1 BEDROOM + DEN

BUILDING A - TYPE D

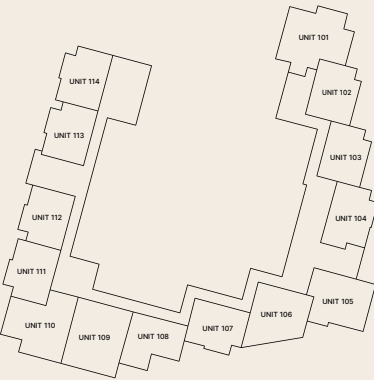
	FLOORS	3, 4
RESIDENCE	108 sqm	1,162 sqft
BALCONY / TERRACE	32 - 71 sqm	344 - 764 sqft
TOTAL	141 - 179 sqm	1,518 - 1,926 sqft

MASTERPLAN

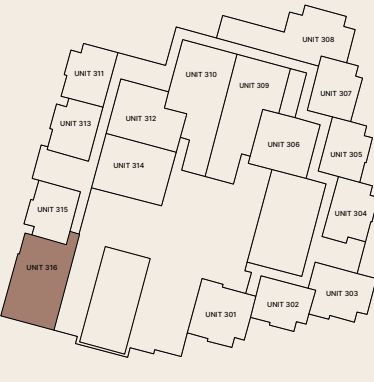


The following floor plans are only applicable to Building A. All pictures, plans, layouts, information, data and details included in this brochure are indicative only and may change at any time up to the final 'as built' status in accordance with final designs of the project, regulatory approvals and planning permissions. All accessories and interior finishes such as wallpaper, chandeliers, furniture, electronics, white goods, curtains, hard and soft landscaping, pavements, features, gym, swimming pool(s) and other elements displayed in the brochure, or within the show apartment or between the plot boundary and the unit, are not part of the unit and are shown for illustrative purposes only.

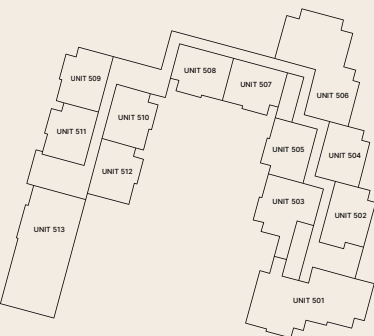
FLOOR 1



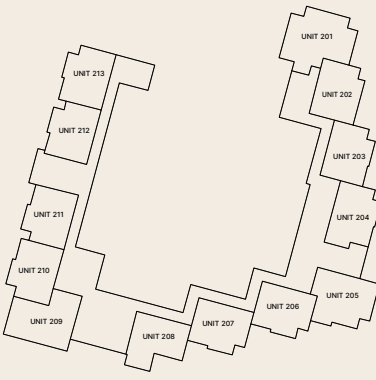
FLOOR 3



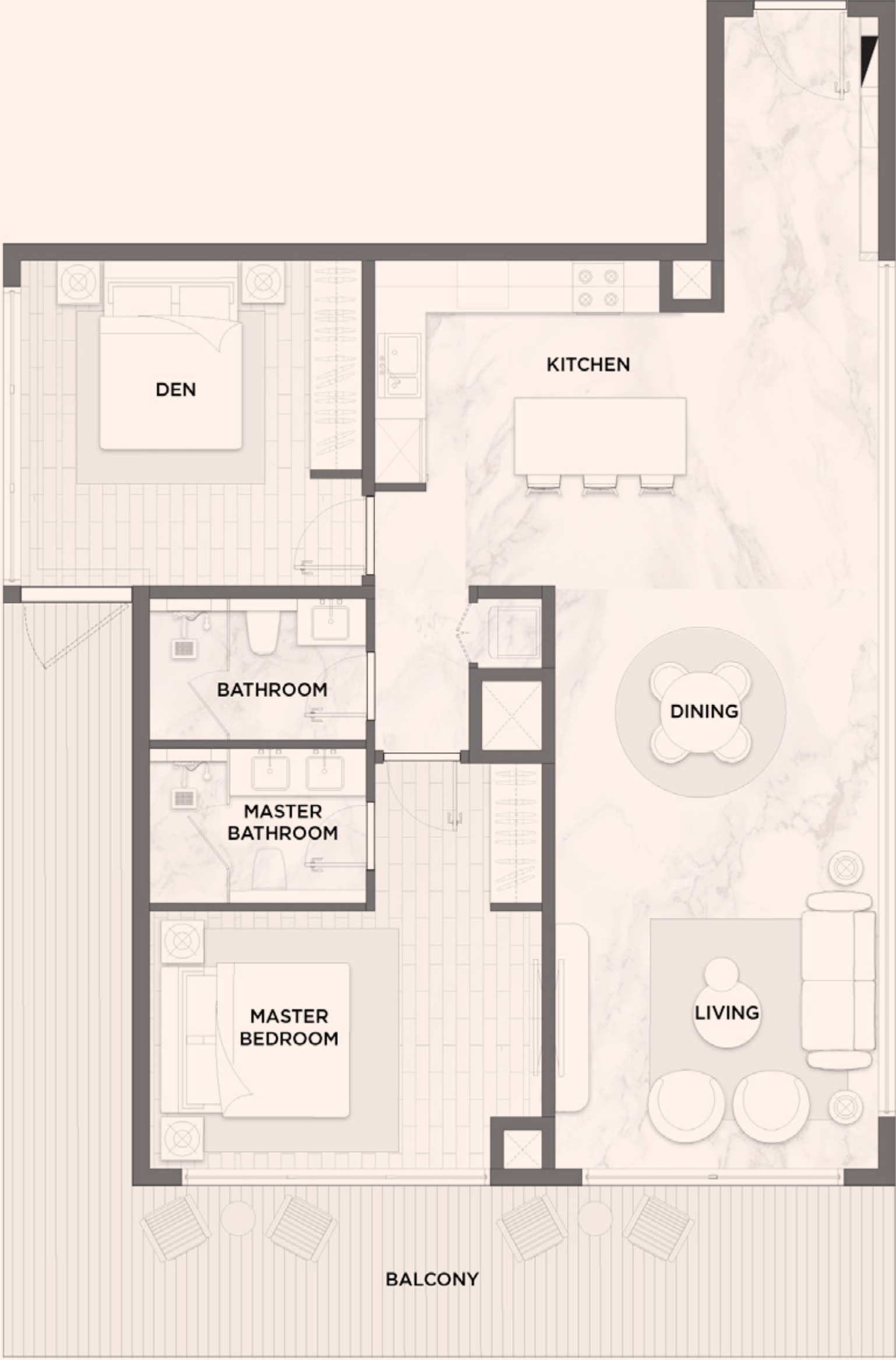
FLOOR 5



FLOOR 2



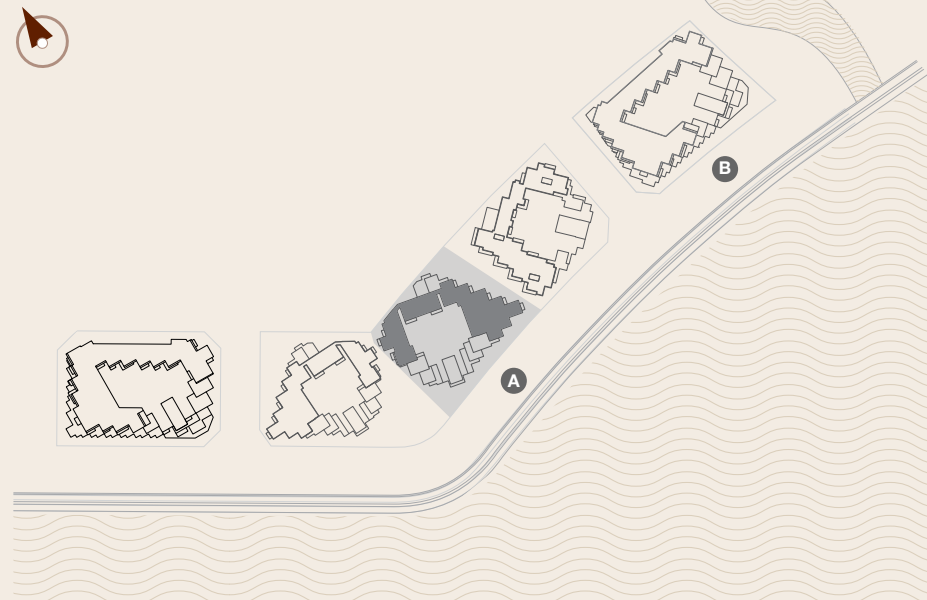
FLOOR 4





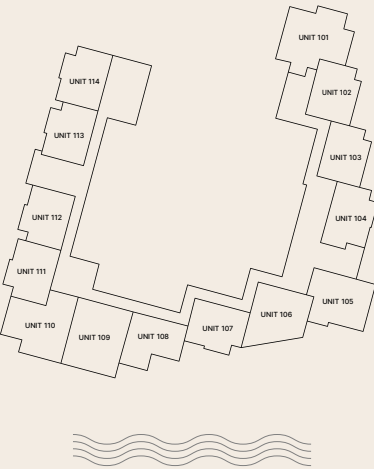
L'HORIZON <i>by</i> ELIE SAAB		
1 BEDROOM + DEN BUILDING A - TYPE D1		
FLOOR		5
RESIDENCE	103 sqm	1,109 sqft
BALCONY / TERRACE	149 sqm	1,604 sqft
TOTAL	252 sqm	2,712 sqft

MASTERPLAN

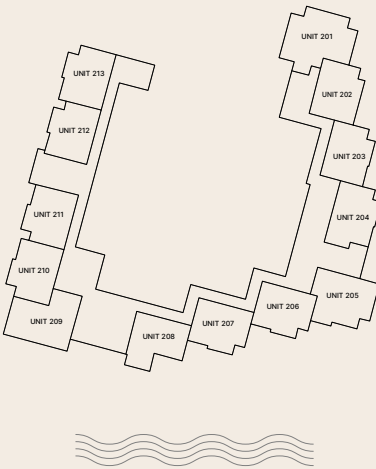


The following floor plans are only applicable to Building A. All pictures, plans, layouts, information, data and details included in this brochure are indicative only and may change at any time up to the final 'as built' status in accordance with final designs of the project, regulatory approvals and planning permissions. All accessories and interior finishes such as wallpaper, chandeliers, furniture, electronics, white goods, curtains, hard and soft landscaping, pavements, features, gym, swimming pool(s) and other elements displayed in the brochure, or within the show apartment or between the plot boundary and the unit, are not part of the unit and are shown for illustrative purposes only.

FLOOR 1



FLOOR 2



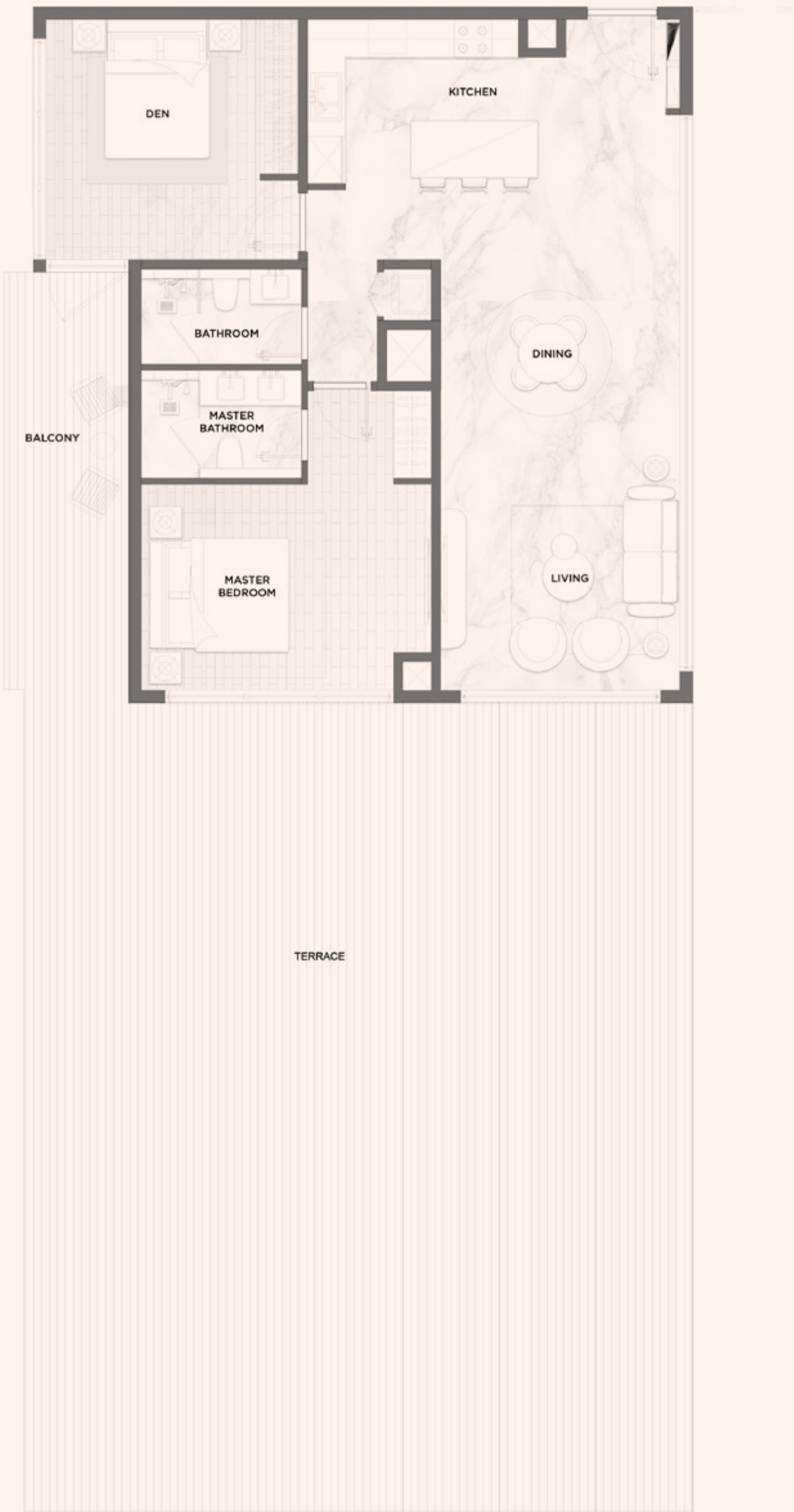
FLOOR 3



FLOOR 4



FLOOR 5





# L'HORIZON *Building B*

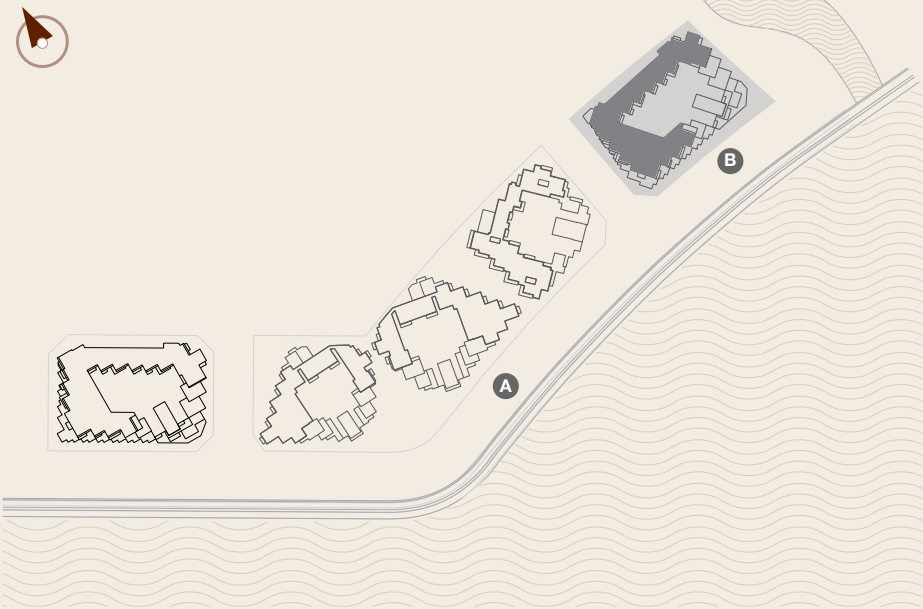
F L O O R   P L A N S





L'HORIZON <i>by</i> ELIE SAAB		
	FLOORS	1, 2, 3, 4, 5
RESIDENCE	80 - 81 sqm	861 - 872 sqft
BALCONY / TERRACE	10 - 158 sqm	108 - 1,701 sqft
TOTAL	89 - 239 sqm	958 - 2,572 sqft

MASTERPLAN



The following floor plans are only applicable to Building B. All pictures, plans, layouts, information, data and details included in this brochure are indicative only and may change at any time up to the final 'as built' status in accordance with final designs of the project, regulatory approvals and planning permissions. All accessories and interior finishes such as wallpaper, chandeliers, furniture, electronics, white goods, curtains, hard and soft landscaping, pavements, features, gym, swimming pool(s) and other elements displayed in the brochure, or within the show apartment or between the plot boundary and the unit, are not part of the unit and are shown for illustrative purposes only.

FLOOR 1



FLOOR 2



FLOOR 3



FLOOR 4



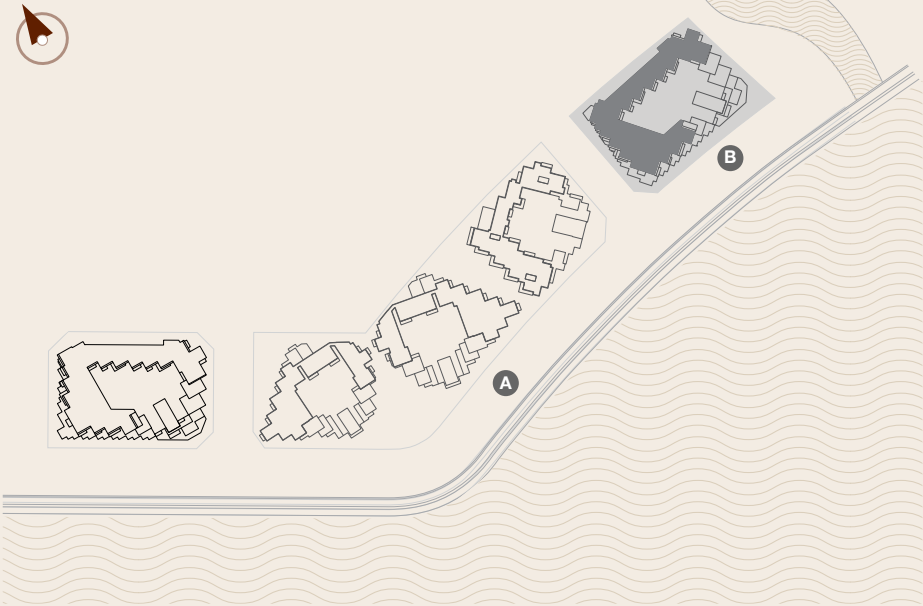
FLOOR 5





L'HORIZON <i>by</i> ELIE SAAB		
	FLOORS	3, 4, 5
RESIDENCE	121 sqm	1,302 sqft
BALCONY / TERRACE	15 - 40 sqm	161 - 430 sqft
TOTAL	136 - 161 sqm	1,464 - 1,733 sqft

MASTERPLAN

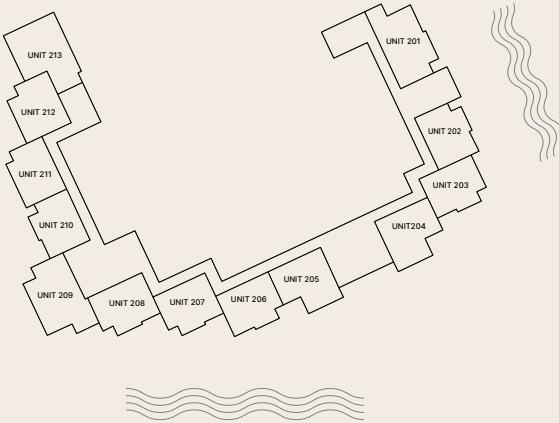


The following floor plans are only applicable to Building B. All pictures, plans, layouts, information, data and details included in this brochure are indicative only and may change at any time up to the final 'as built' status in accordance with final designs of the project, regulatory approvals and planning permissions. All accessories and interior finishes such as wallpaper, chandeliers, furniture, electronics, white goods, curtains, hard and soft landscaping, pavements, features, gym, swimming pool(s) and other elements displayed in the brochure, or within the show apartment or between the plot boundary and the unit, are not part of the unit and are shown for illustrative purposes only.

FLOOR 1



FLOOR 2



FLOOR 3



FLOOR 4



FLOOR 5





L'HORIZON

by

ELIE SAAB

1 BEDROOM + DEN

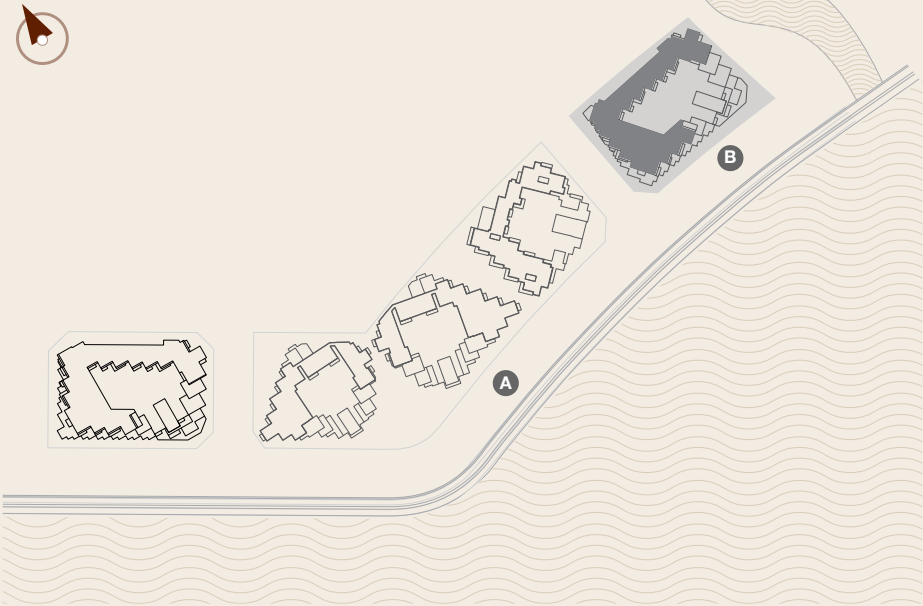
BUILDING B - TYPE A2

FLOORS

1, 2, 3, 4, 5

RESIDENCE	102 sqm	1,098 sqft
BALCONY / TERRACE	25 sqm	269 sqft
TOTAL	126 sqm	1,356 sqft

MASTERPLAN

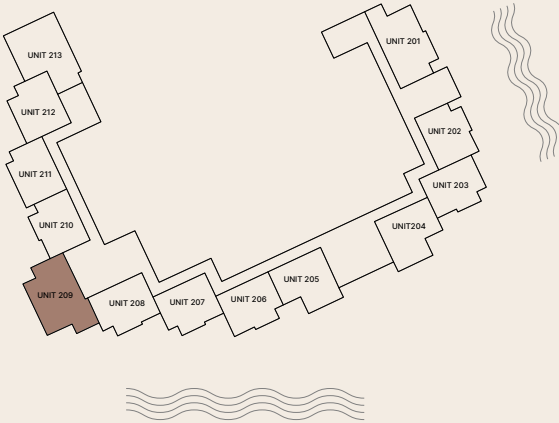


The following floor plans are only applicable to Building B. All pictures, plans, layouts, information, data and details included in this brochure are indicative only and may change at any time up to the final 'as built' status in accordance with final designs of the project, regulatory approvals and planning permissions. All accessories and interior finishes such as wallpaper, chandeliers, furniture, electronics, white goods, curtains, hard and soft landscaping, pavements, features, gym, swimming pool(s) and other elements displayed in the brochure, or within the show apartment or between the plot boundary and the unit, are not part of the unit and are shown for illustrative purposes only.

FLOOR 1



FLOOR 2



FLOOR 3



FLOOR 4



FLOOR 5





L'HORIZON

by

ELIE SAAB

1 BEDROOM + DEN

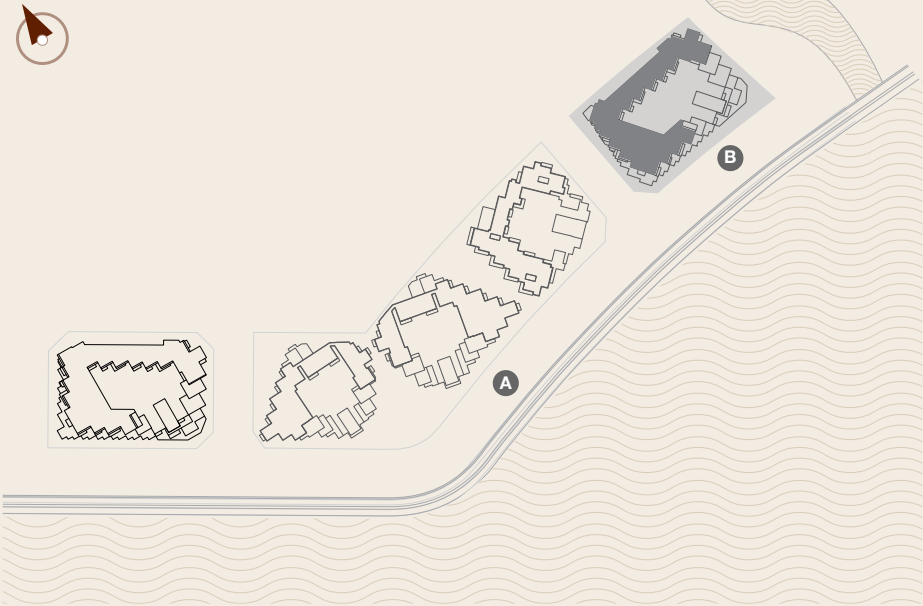
BUILDING B - TYPE A3

FLOOR

3

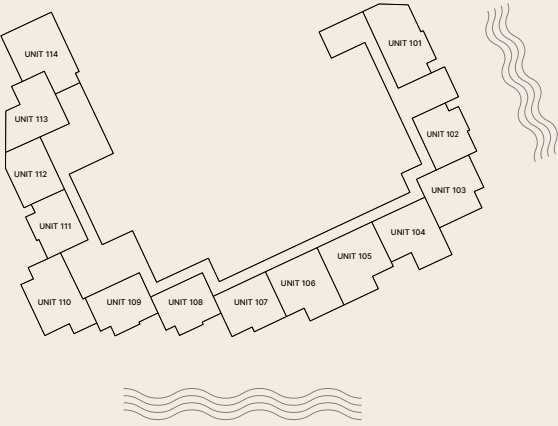
RESIDENCE	85 sqm	915 sqft
BALCONY / TERRACE	29 sqm	301 sqft
TOTAL	114 sqm	1,227 sqft

MASTERPLAN

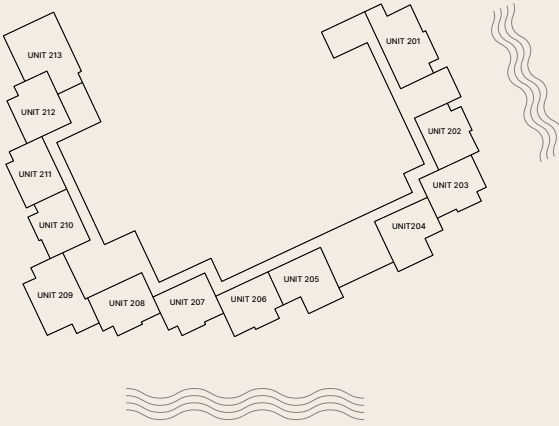


The following floor plans are only applicable to Building B. All pictures, plans, layouts, information, data and details included in this brochure are indicative only and may change at any time up to the final 'as built' status in accordance with final designs of the project, regulatory approvals and planning permissions. All accessories and interior finishes such as wallpaper, chandeliers, furniture, electronics, white goods, curtains, hard and soft landscaping, pavements, features, gym, swimming pool(s) and other elements displayed in the brochure, or within the show apartment or between the plot boundary and the unit, are not part of the unit and are shown for illustrative purposes only.

FLOOR 1



FLOOR 2



FLOOR 3



FLOOR 4



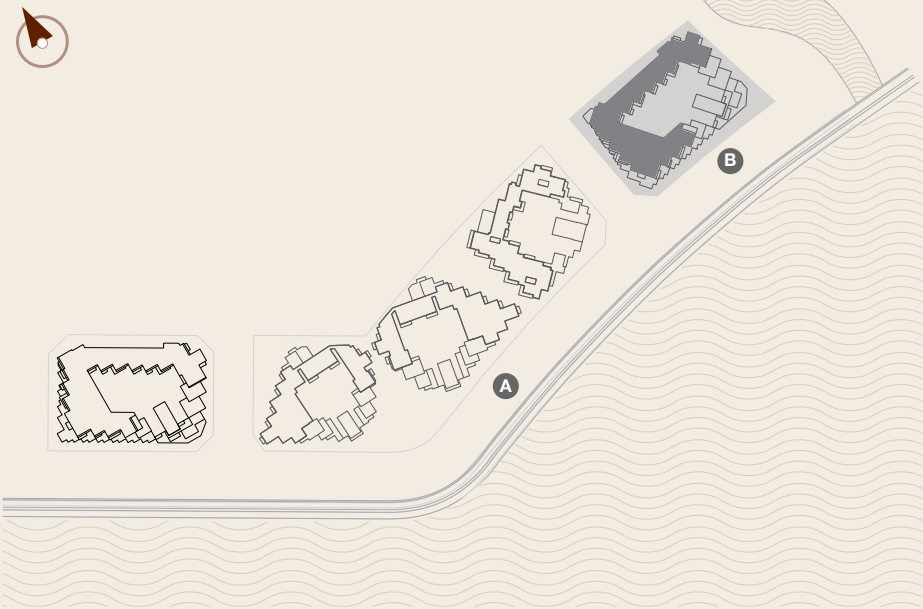
FLOOR 5





L'HORIZON		
by		
ELIE SAAB		
1 BEDROOM + DEN		
BUILDING B - TYPE A4		
FLOORS	3, 4, 5	
RESIDENCE	84 sqm	904 sqft
BALCONY / TERRACE	11 - 78 sqm	118 - 839 sqft
TOTAL	96 - 162 sqm	1,033 - 1,744 sqft

MASTERPLAN

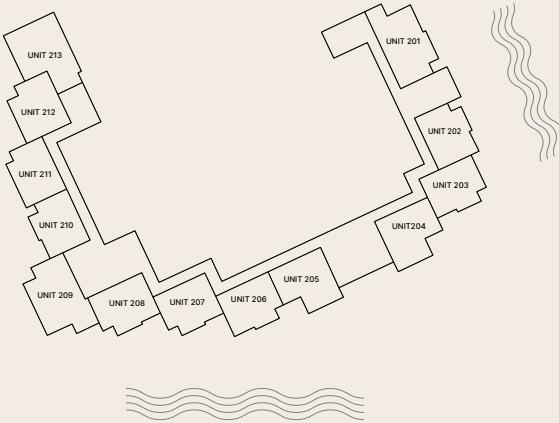


The following floor plans are only applicable to Building B. All pictures, plans, layouts, information, data and details included in this brochure are indicative only and may change at any time up to the final 'as built' status in accordance with final designs of the project, regulatory approvals and planning permissions. All accessories and interior finishes such as wallpaper, chandeliers, furniture, electronics, white goods, curtains, hard and soft landscaping, pavements, features, gym, swimming pool(s) and other elements displayed in the brochure, or within the show apartment or between the plot boundary and the unit, are not part of the unit and are shown for illustrative purposes only.

FLOOR 1



FLOOR 2



FLOOR 3



FLOOR 4



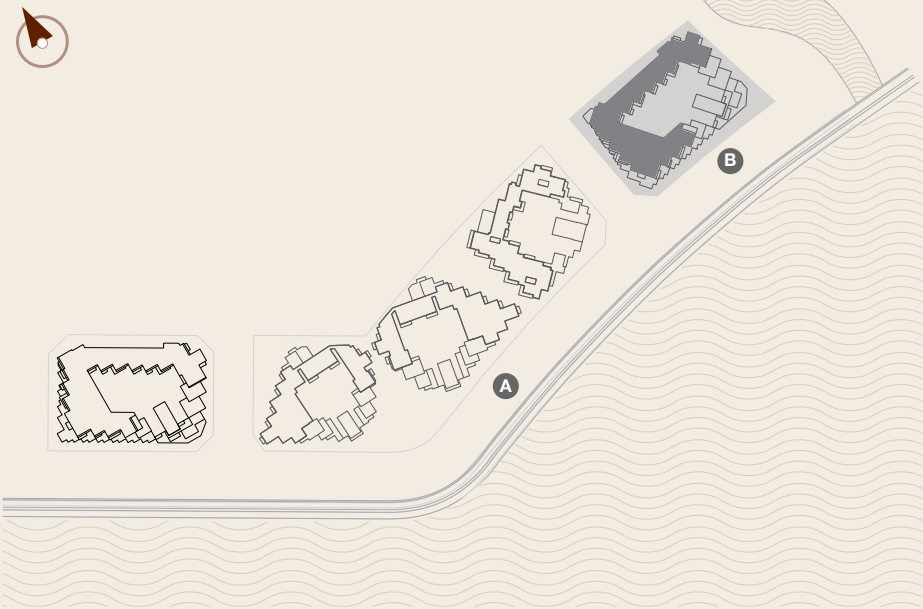
FLOOR 5





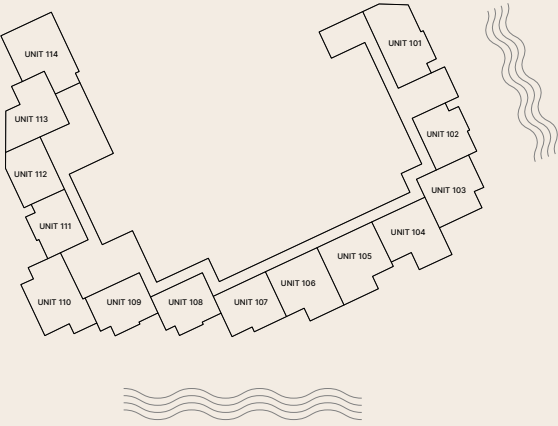
L'HORIZON		
by		
ELIE SAAB		
1 BEDROOM + DEN		
BUILDING B - TYPE A5		
FLOORS	3, 4, 5	
RESIDENCE	93 sqm	1,001 sqft
BALCONY / TERRACE	11 sqm	118 sqft
TOTAL	110 sqm	1,184 sqft

MASTERPLAN

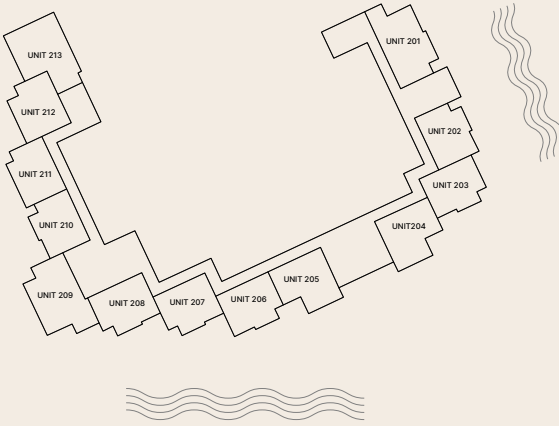


The following floor plans are only applicable to Building B. All pictures, plans, layouts, information, data and details included in this brochure are indicative only and may change at any time up to the final 'as built' status in accordance with final designs of the project, regulatory approvals and planning permissions. All accessories and interior finishes such as wallpaper, chandeliers, furniture, electronics, white goods, curtains, hard and soft landscaping, pavements, features, gym, swimming pool(s) and other elements displayed in the brochure, or within the show apartment or between the plot boundary and the unit, are not part of the unit and are shown for illustrative purposes only.

FLOOR 1



FLOOR 2



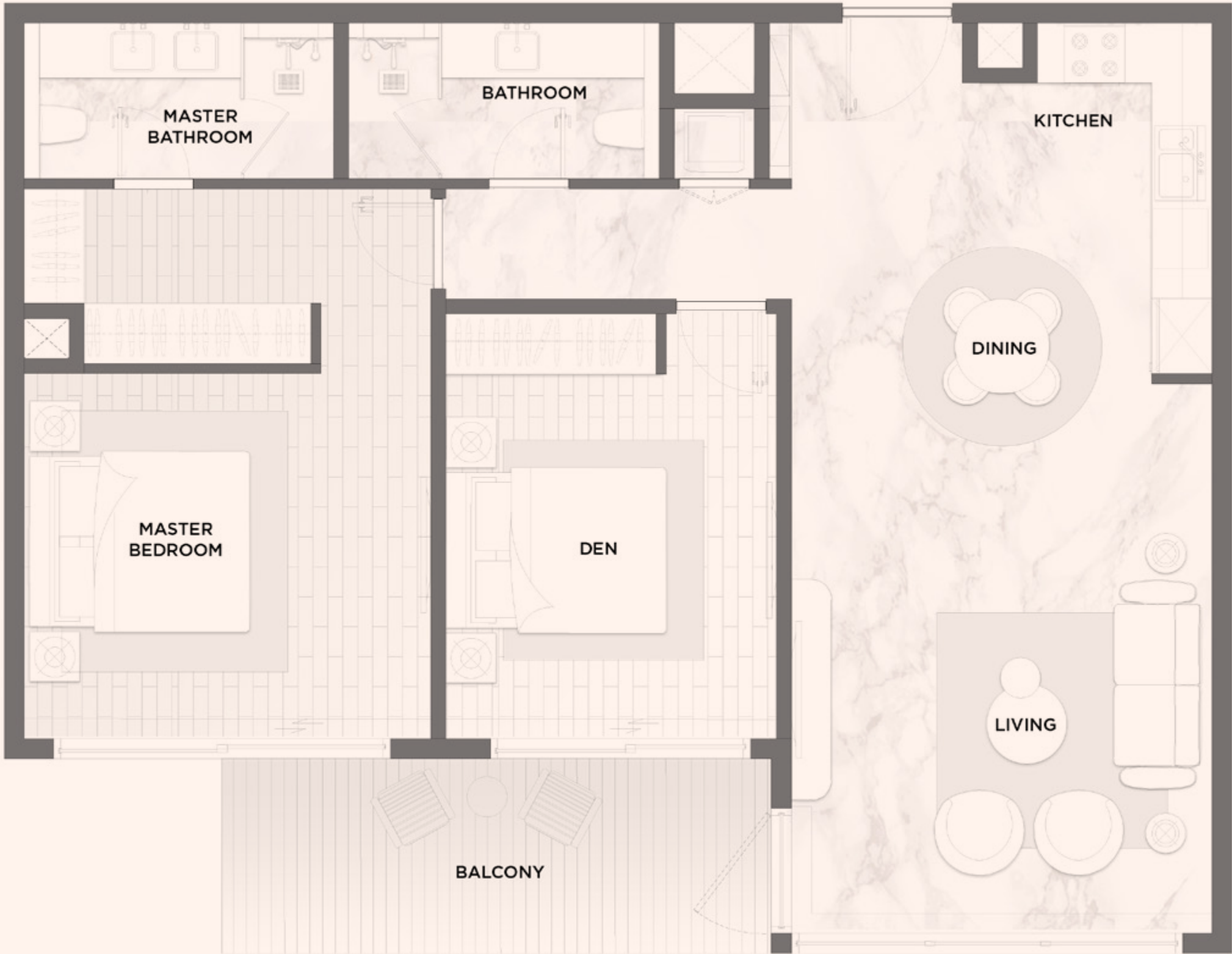
FLOOR 3



FLOOR 4



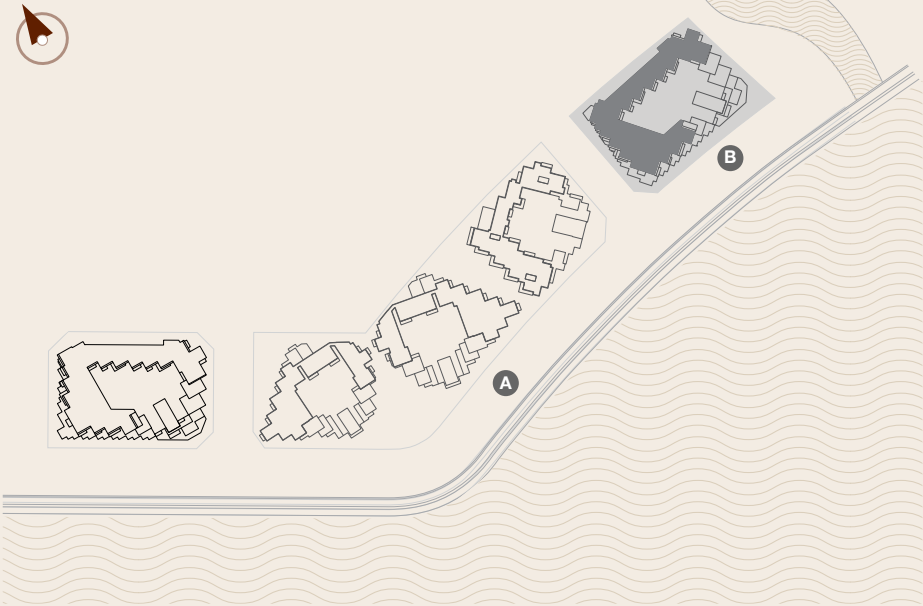
FLOOR 5





L'HORIZON <i>by</i> ELIE SAAB			1 BEDROOM + DEN BUILDING B - TYPE A6		
FLOORS			4, 5		
RESIDENCE			95 sqm	1,022 sqft	
BALCONY / TERRACE			14 - 19 sqm	151 - 204 sqft	
TOTAL			109 - 114 sqm	1,173 - 1,227 sqft	

MASTERPLAN

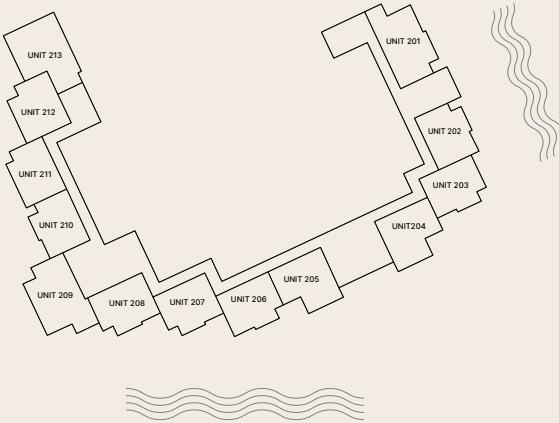


The following floor plans are only applicable to Building B. All pictures, plans, layouts, information, data and details included in this brochure are indicative only and may change at any time up to the final 'as built' status in accordance with final designs of the project, regulatory approvals and planning permissions. All accessories and interior finishes such as wallpaper, chandeliers, furniture, electronics, white goods, curtains, hard and soft landscaping, pavements, features, gym, swimming pool(s) and other elements displayed in the brochure, or within the show apartment or between the plot boundary and the unit, are not part of the unit and are shown for illustrative purposes only.

FLOOR 1



FLOOR 2



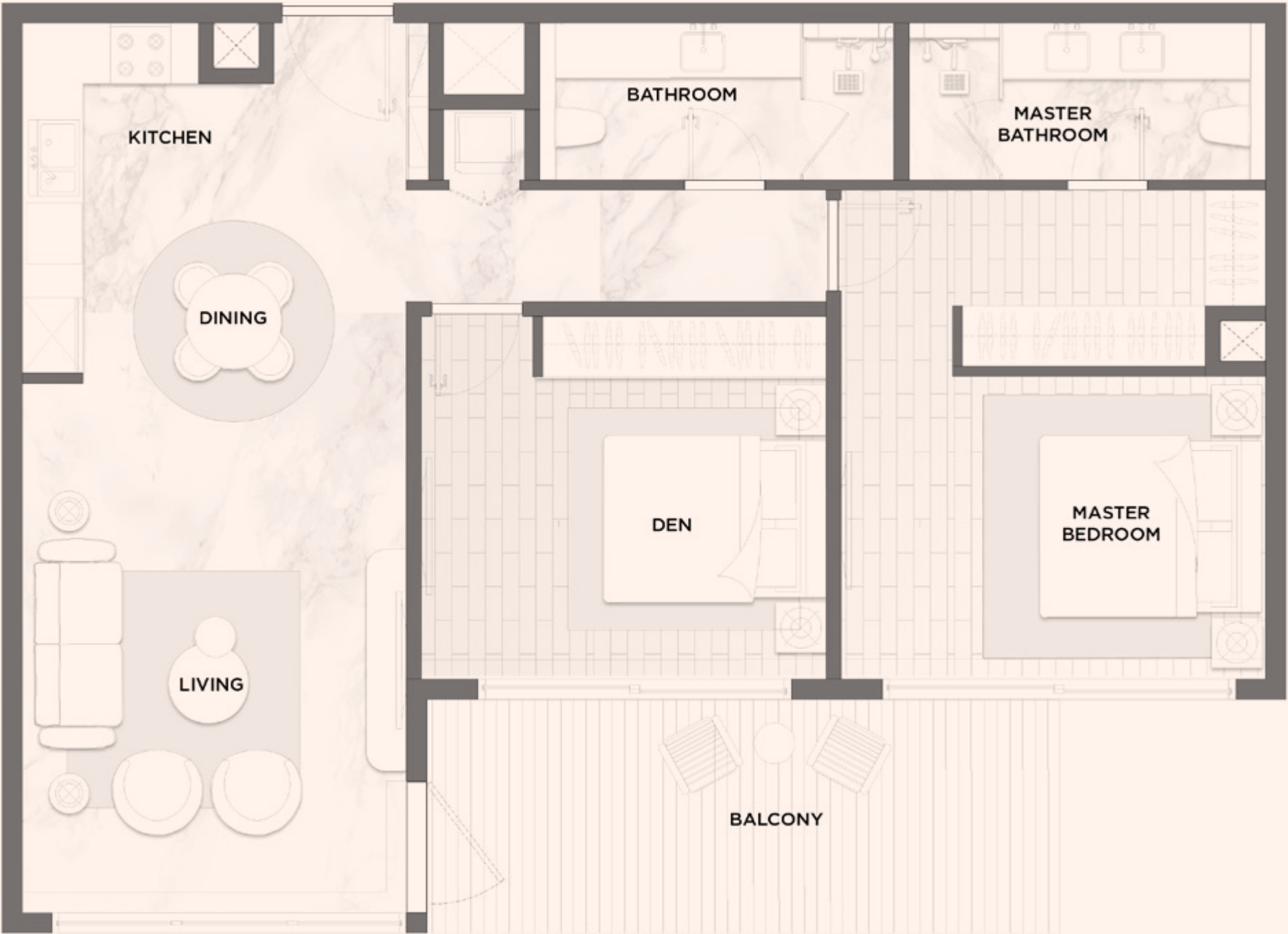
FLOOR 3



FLOOR 4



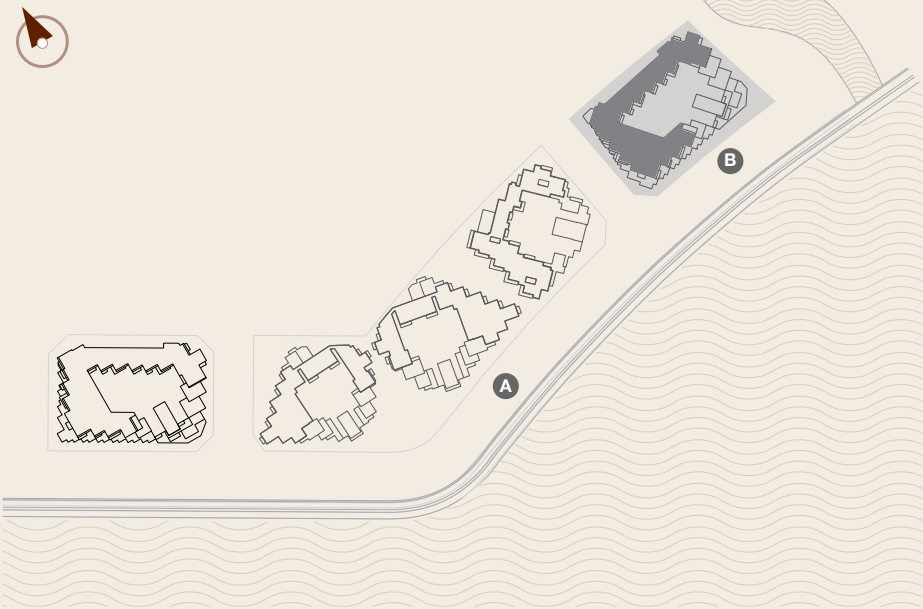
FLOOR 5





L'HORIZON		
by		
ELIE SAAB		
1 BEDROOM + DEN		
BUILDING B - TYPE A7		
FLOORS	1, 2, 3, 4, 5	
RESIDENCE	84 sqm	904 sqft
BALCONY / TERRACE	10 sqm	108 sqft
TOTAL	94 sqm	1,012 sqft

MASTERPLAN



The following floor plans are only applicable to Building B. All pictures, plans, layouts, information, data and details included in this brochure are indicative only and may change at any time up to the final 'as built' status in accordance with final designs of the project, regulatory approvals and planning permissions. All accessories and interior finishes such as wallpaper, chandeliers, furniture, electronics, white goods, curtains, hard and soft landscaping, pavements, features, gym, swimming pool(s) and other elements displayed in the brochure, or within the show apartment or between the plot boundary and the unit, are not part of the unit and are shown for illustrative purposes only.

FLOOR 1



FLOOR 2



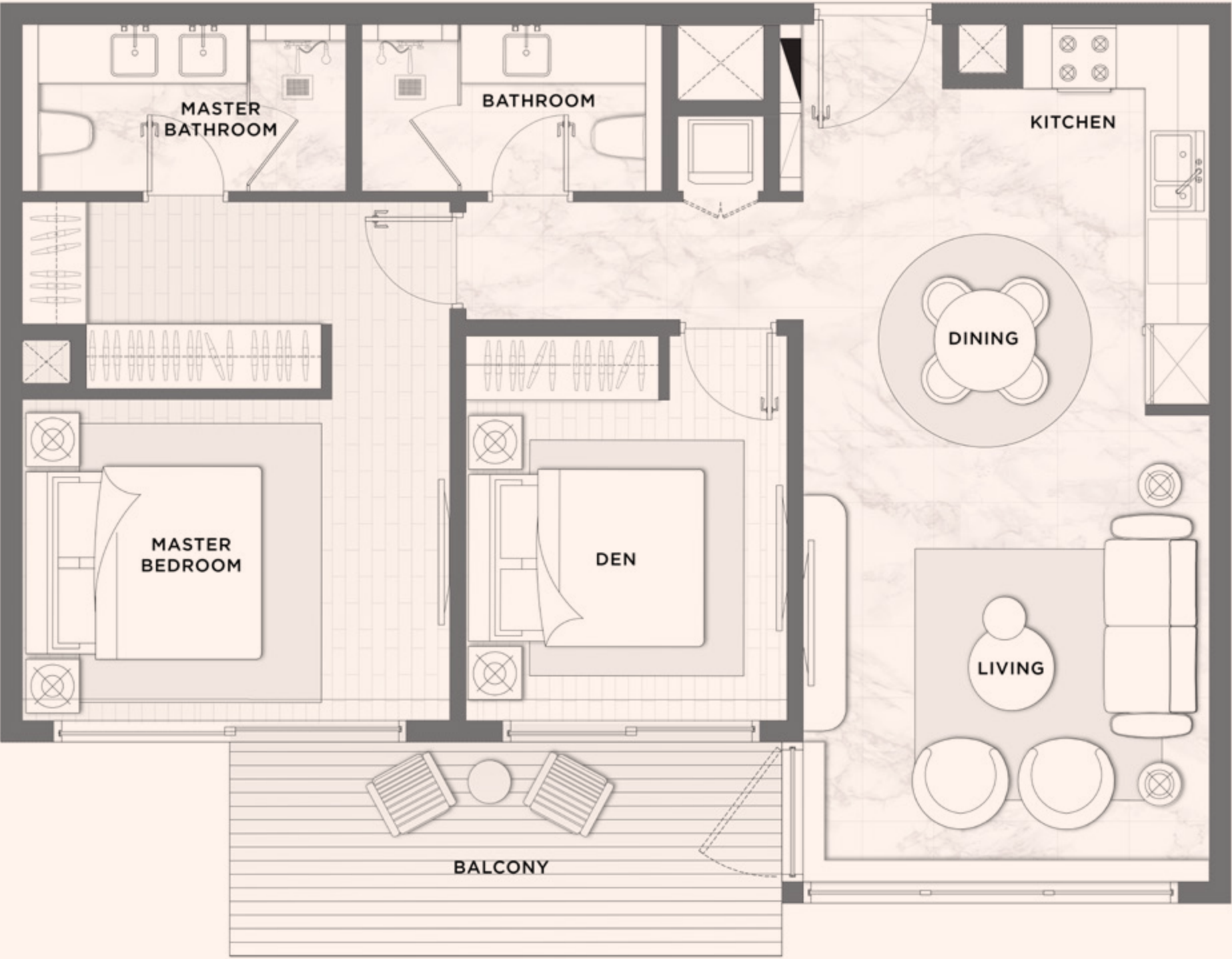
FLOOR 3



FLOOR 4



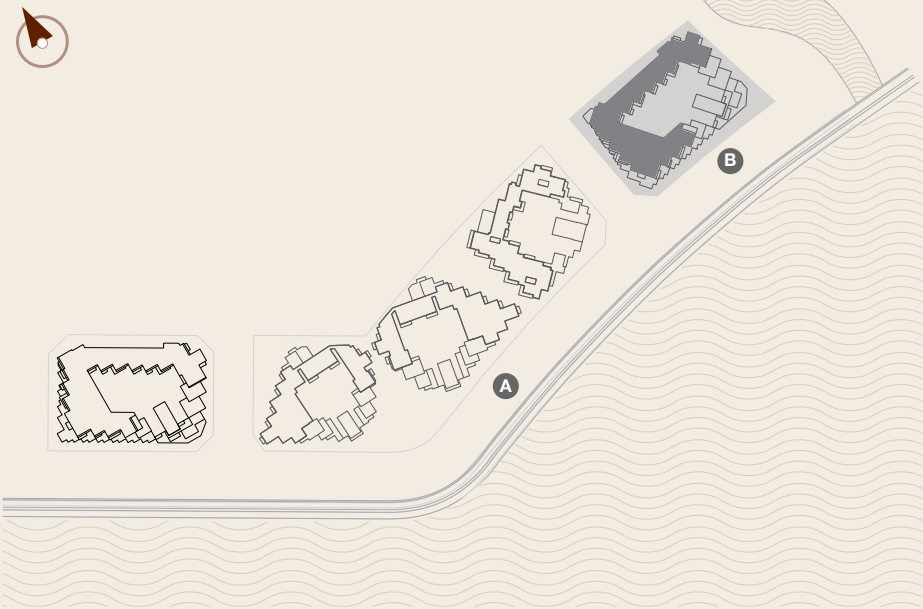
FLOOR 5





L'HORIZON		
by		
ELIE SAAB		
1 BEDROOM + DEN		
BUILDING B - TYPE A8		
FLOOR		1
RESIDENCE	85 sqm	915 sqft
BALCONY / TERRACE	41 sqm	441 sqft
TOTAL	126 sqm	1,356 sqft

MASTERPLAN

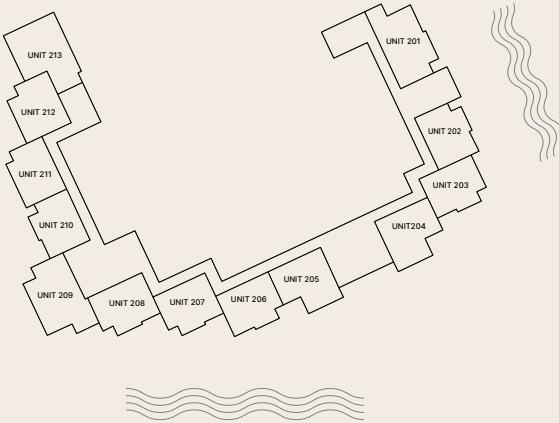


The following floor plans are only applicable to Building B. All pictures, plans, layouts, information, data and details included in this brochure are indicative only and may change at any time up to the final 'as built' status in accordance with final designs of the project, regulatory approvals and planning permissions. All accessories and interior finishes such as wallpaper, chandeliers, furniture, electronics, white goods, curtains, hard and soft landscaping, pavements, features, gym, swimming pool(s) and other elements displayed in the brochure, or within the show apartment or between the plot boundary and the unit, are not part of the unit and are shown for illustrative purposes only.

FLOOR 1



FLOOR 2



FLOOR 3



FLOOR 4



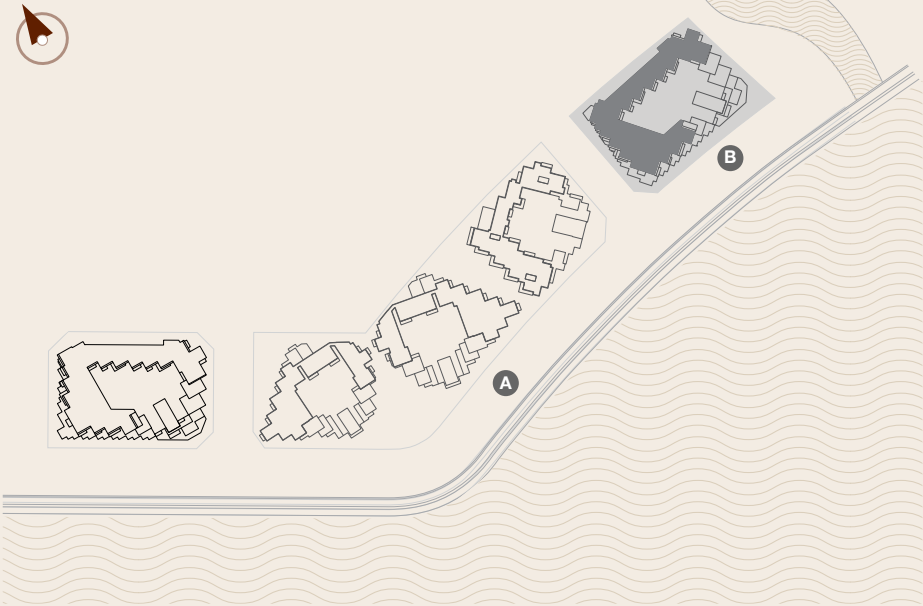
FLOOR 5





L'HORIZON		
by		
ELIE SAAB		
1 BEDROOM + DEN		
BUILDING B - TYPE A9		
FLOORS	1, 2, 3, 4, 5	
RESIDENCE	84 sqm	904 sqft
BALCONY / TERRACE	11 - 23 sqm	118 - 247 sqft
TOTAL	95 - 107 sqm	1,022 - 1,152 sqft

MASTERPLAN

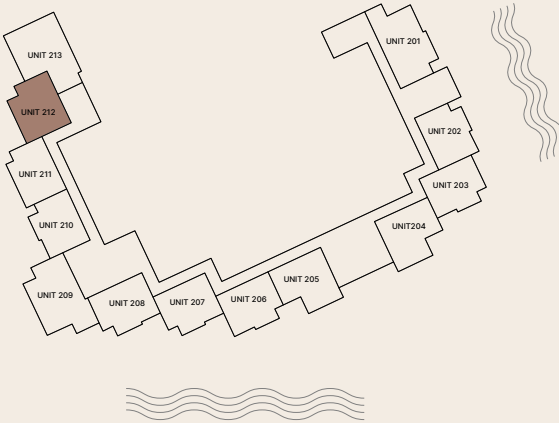


The following floor plans are only applicable to Building B. All pictures, plans, layouts, information, data and details included in this brochure are indicative only and may change at any time up to the final 'as built' status in accordance with final designs of the project, regulatory approvals and planning permissions. All accessories and interior finishes such as wallpaper, chandeliers, furniture, electronics, white goods, curtains, hard and soft landscaping, pavements, features, gym, swimming pool(s) and other elements displayed in the brochure, or within the show apartment or between the plot boundary and the unit, are not part of the unit and are shown for illustrative purposes only.

FLOOR 1



FLOOR 2



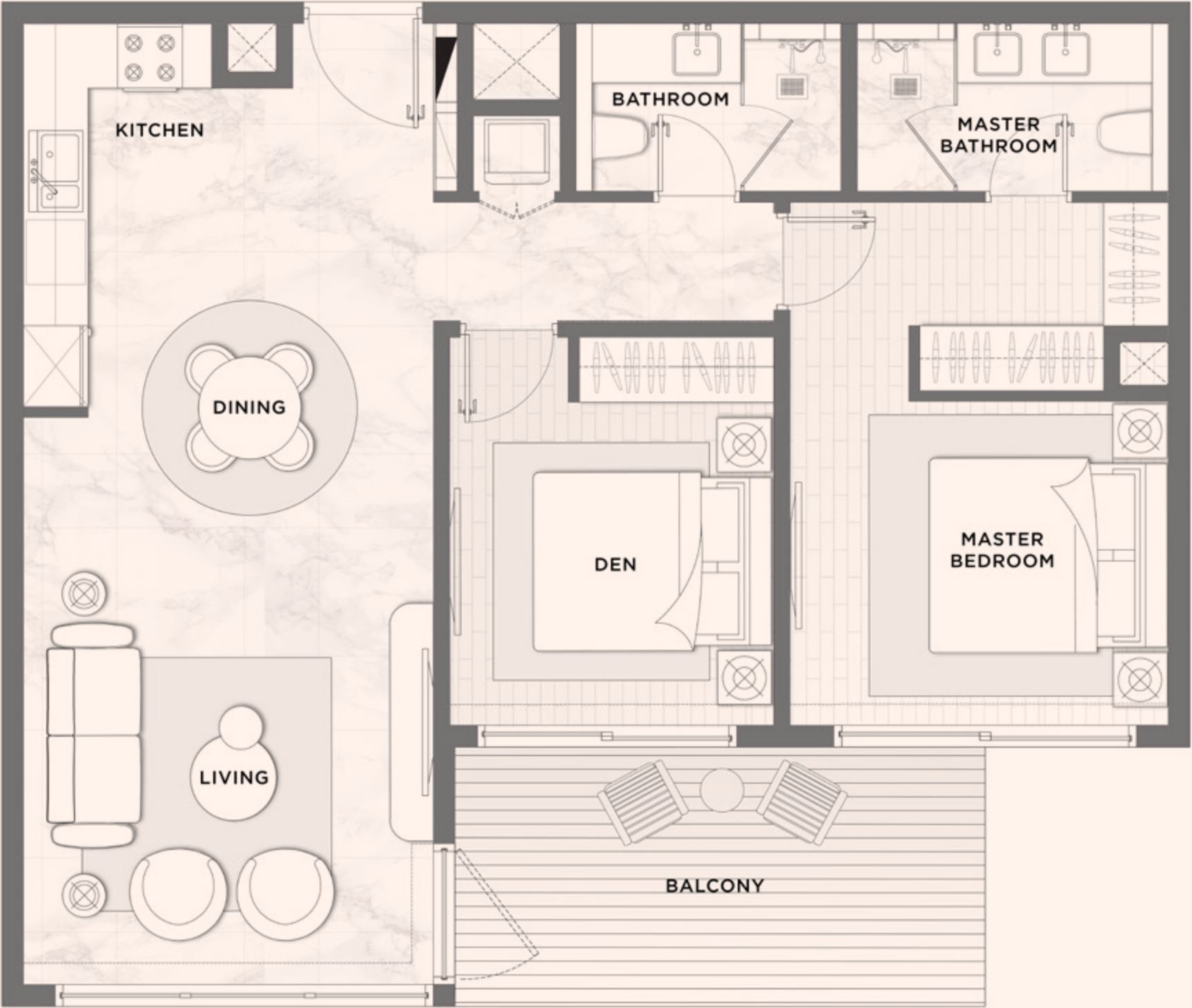
FLOOR 3



FLOOR 4



FLOOR 5





L'HORIZON

by

ELIE SAAB

1 BEDROOM + DEN

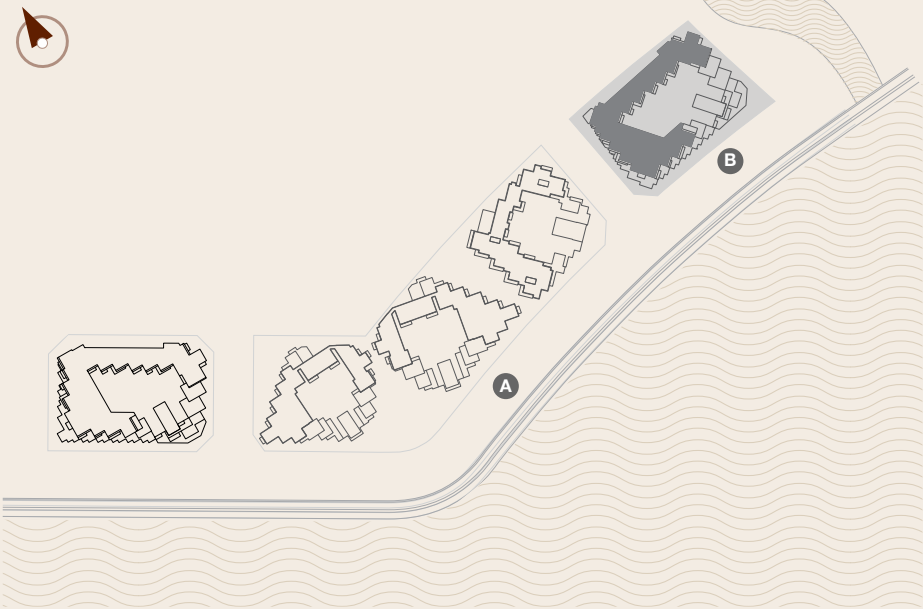
BUILDING B - TYPE A10

FLOORS

1, 2, 3, 4, 5

RESIDENCE	110 sqm	1,184 sqft
BALCONY / TERRACE	12 sqm	129 sqft
TOTAL	122 sqm	1,313 sqft

MASTERPLAN



The following floor plans are only applicable to Building B. All pictures, plans, layouts, information, data and details included in this brochure are indicative only and may change at any time up to the final 'as built' status in accordance with final designs of the project, regulatory approvals and planning permissions. All accessories and interior finishes such as wallpaper, chandeliers, furniture, electronics, white goods, curtains, hard and soft landscaping, pavements, features, gym, swimming pool(s) and other elements displayed in the brochure, or within the show apartment or between the plot boundary and the unit, are not part of the unit and are shown for illustrative purposes only.

FLOOR 1



FLOOR 2



FLOOR 3



FLOOR 4



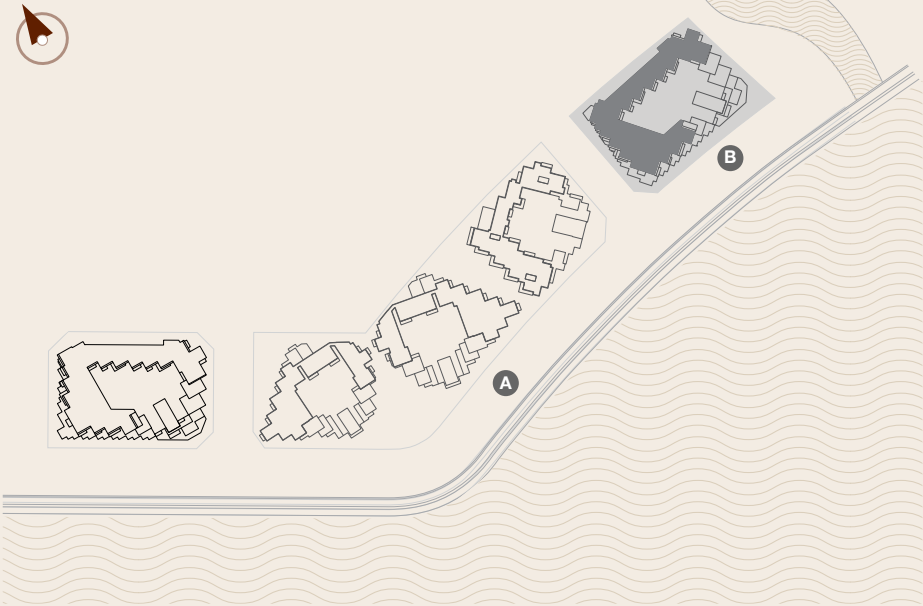
FLOOR 5





L'HORIZON		1 BEDROOM + DEN	
by		BUILDING B - TYPE B	
ELIE SAAB			
FLOORS		3, 4, 5	
RESIDENCE	97 sqm	1,044 sqft	
BALCONY / TERRACE	18 sqm	193 sqft	
TOTAL	115 sqm	1,238 sqft	

MASTERPLAN

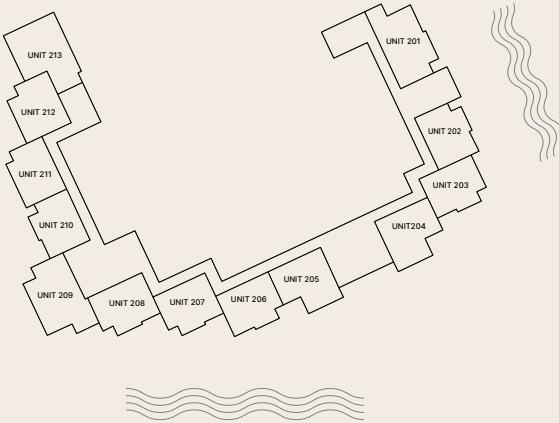


The following floor plans are only applicable to Building B. All pictures, plans, layouts, information, data and details included in this brochure are indicative only and may change at any time up to the final 'as built' status in accordance with final designs of the project, regulatory approvals and planning permissions. All accessories and interior finishes such as wallpaper, chandeliers, furniture, electronics, white goods, curtains, hard and soft landscaping, pavements, features, gym, swimming pool(s) and other elements displayed in the brochure, or within the show apartment or between the plot boundary and the unit, are not part of the unit and are shown for illustrative purposes only.

FLOOR 1



FLOOR 2



FLOOR 3



FLOOR 4



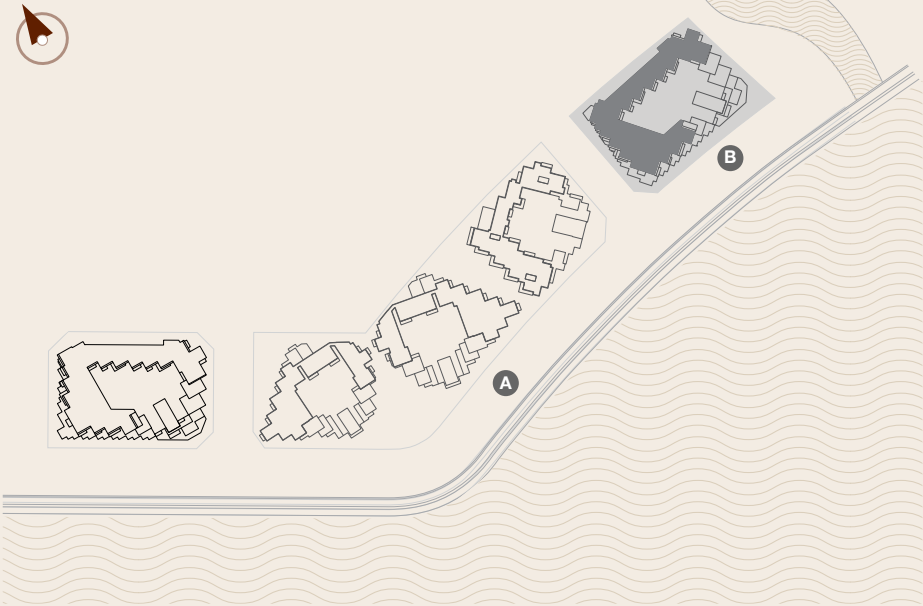
FLOOR 5





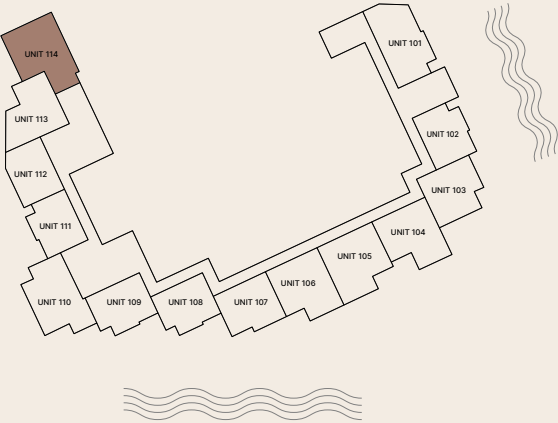
L'HORIZON <i>by</i> ELIE SAAB		
1 BEDROOM + DEN BUILDING B - TYPE B1		
FLOORS		1, 2
RESIDENCE	108 sqm	1,162 sqft
BALCONY / TERRACE	18 sqm	194 sqft
TOTAL	126 sqm	1,356 sqft

MASTERPLAN

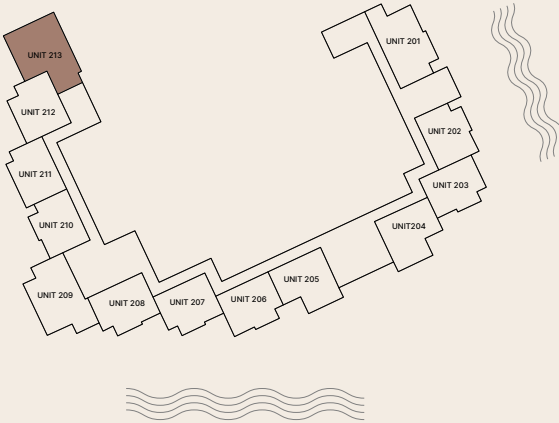


The following floor plans are only applicable to Building B. All pictures, plans, layouts, information, data and details included in this brochure are indicative only and may change at any time up to the final 'as built' status in accordance with final designs of the project, regulatory approvals and planning permissions. All accessories and interior finishes such as wallpaper, chandeliers, furniture, electronics, white goods, curtains, hard and soft landscaping, pavements, features, gym, swimming pool(s) and other elements displayed in the brochure, or within the show apartment or between the plot boundary and the unit, are not part of the unit and are shown for illustrative purposes only.

FLOOR 1



FLOOR 2



FLOOR 3



FLOOR 4



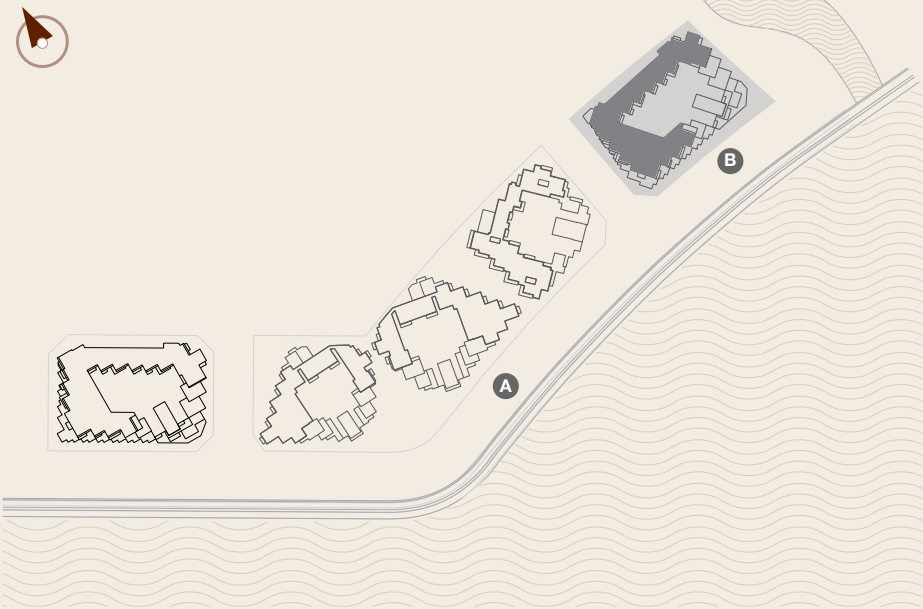
FLOOR 5





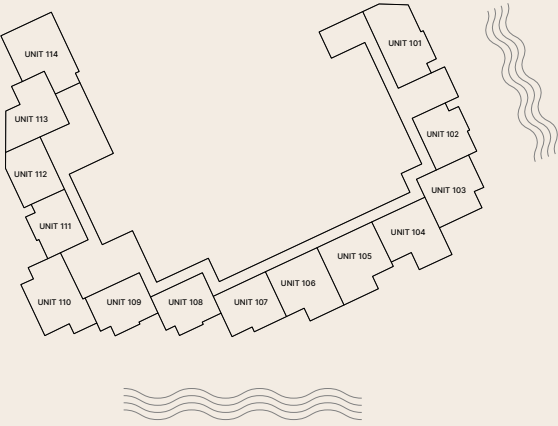
L'HORIZON <i>by</i> ELIE SAAB			1 BEDROOM + DEN BUILDING B - TYPE B2		
FLOORS			4, 5		
RESIDENCE			87 sqm	936 sqft	
BALCONY / TERRACE			40 sqm	430 sqft	
TOTAL			128 sqm	1,378 sqft	

MASTERPLAN

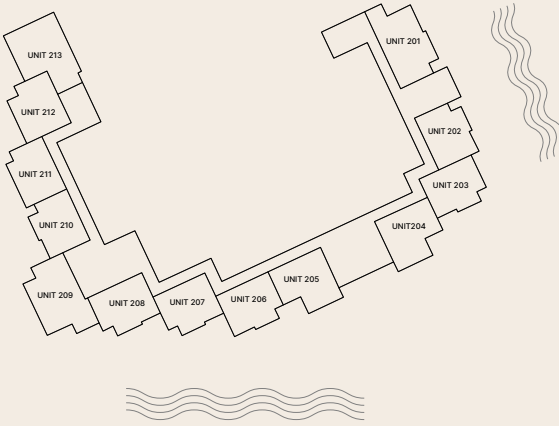


The following floor plans are only applicable to Building B. All pictures, plans, layouts, information, data and details included in this brochure are indicative only and may change at any time up to the final 'as built' status in accordance with final designs of the project, regulatory approvals and planning permissions. All accessories and interior finishes such as wallpaper, chandeliers, furniture, electronics, white goods, curtains, hard and soft landscaping, pavements, features, gym, swimming pool(s) and other elements displayed in the brochure, or within the show apartment or between the plot boundary and the unit, are not part of the unit and are shown for illustrative purposes only.

FLOOR 1



FLOOR 2



FLOOR 3



FLOOR 4



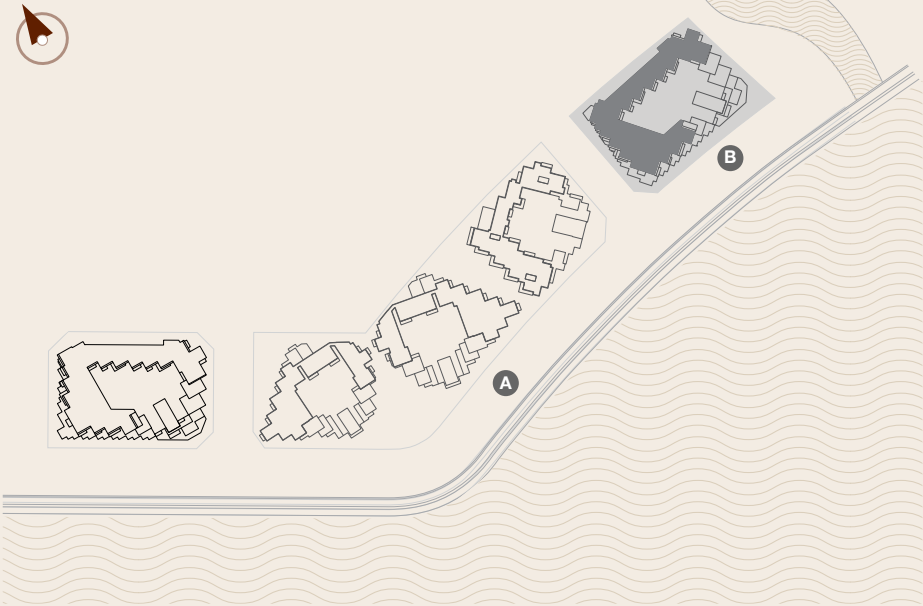
FLOOR 5





L'HORIZON <i>by</i> ELIE SAAB		
1 BEDROOM + DEN BUILDING B - TYPE C		
FLOOR		3
RESIDENCE	109 sqm	1,173 sqft
BALCONY / TERRACE	127 sqm	1,367 sqft
TOTAL	235 sqm	2,529 sqft

MASTERPLAN

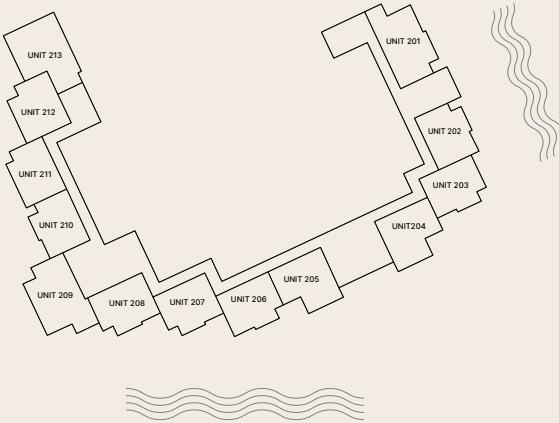


The following floor plans are only applicable to Building B. All pictures, plans, layouts, information, data and details included in this brochure are indicative only and may change at any time up to the final 'as built' status in accordance with final designs of the project, regulatory approvals and planning permissions. All accessories and interior finishes such as wallpaper, chandeliers, furniture, electronics, white goods, curtains, hard and soft landscaping, pavements, features, gym, swimming pool(s) and other elements displayed in the brochure, or within the show apartment or between the plot boundary and the unit, are not part of the unit and are shown for illustrative purposes only.

FLOOR 1



FLOOR 2



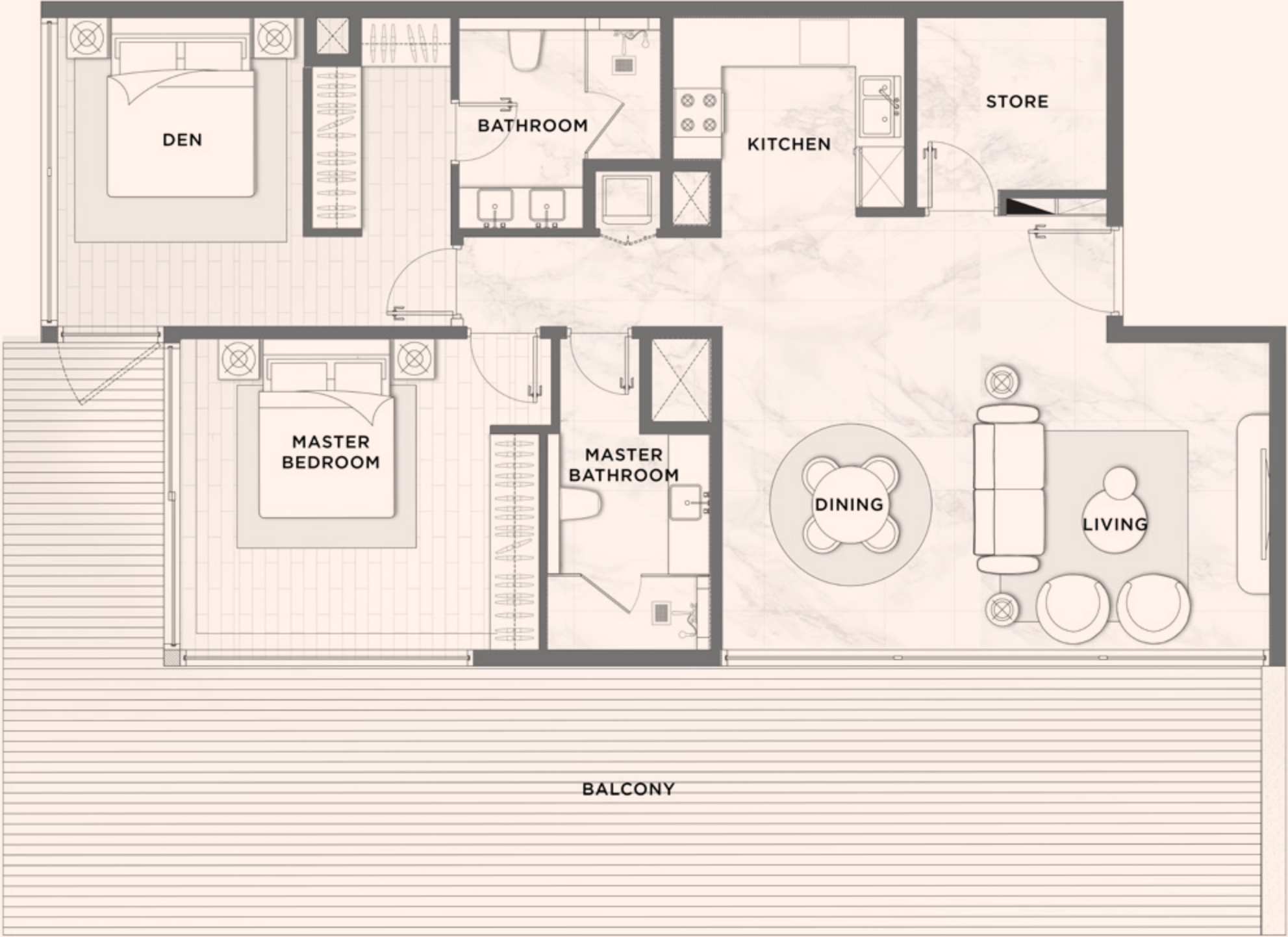
FLOOR 3



FLOOR 4



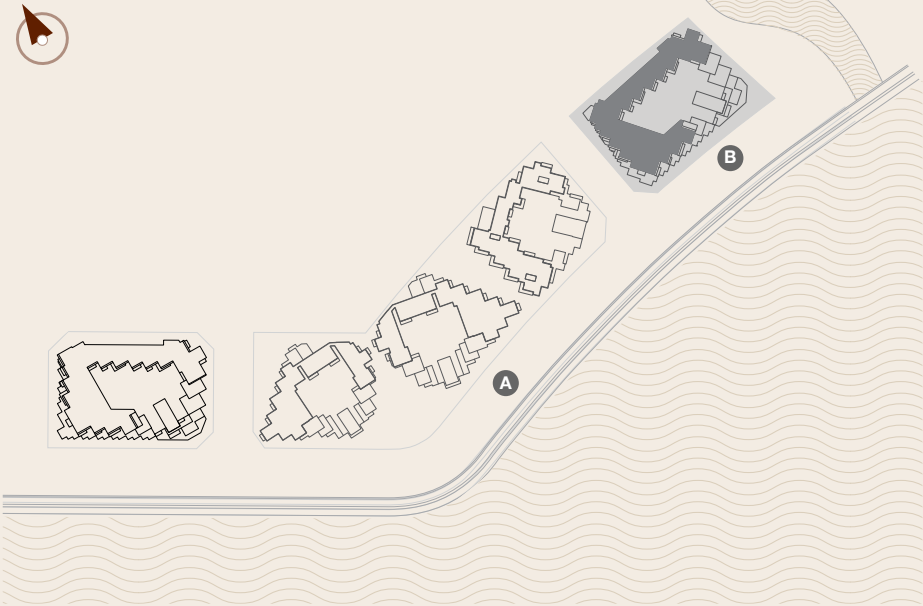
FLOOR 5





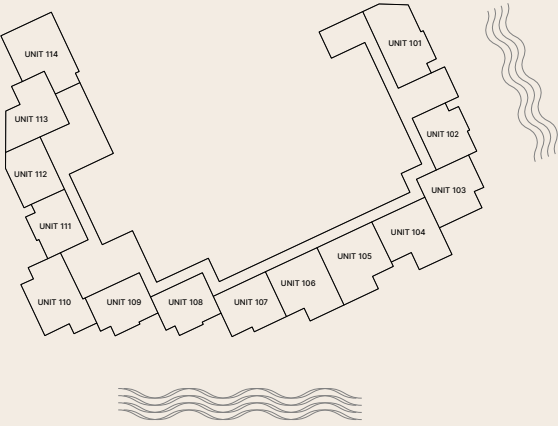
L'HORIZON <i>by</i> ELIE SAAB		
1 BEDROOM + DEN BUILDING B - TYPE C1		
FLOORS		4, 5
RESIDENCE	118 sqm	1,270 sqft
BALCONY / TERRACE	39 sqm	420 sqft
TOTAL	157 sqm	1,690 sqft

MASTERPLAN

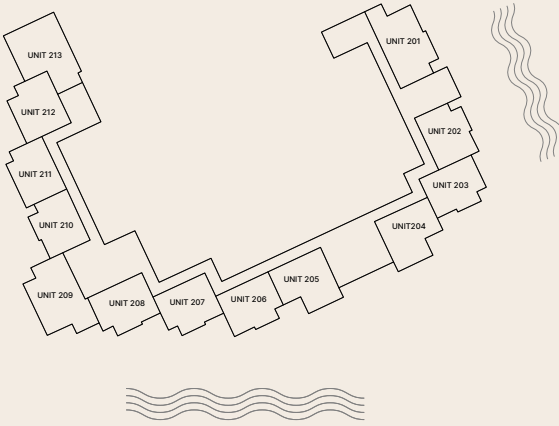


The following floor plans are only applicable to Building B. All pictures, plans, layouts, information, data and details included in this brochure are indicative only and may change at any time up to the final 'as built' status in accordance with final designs of the project, regulatory approvals and planning permissions. All accessories and interior finishes such as wallpaper, chandeliers, furniture, electronics, white goods, curtains, hard and soft landscaping, pavements, features, gym, swimming pool(s) and other elements displayed in the brochure, or within the show apartment or between the plot boundary and the unit, are not part of the unit and are shown for illustrative purposes only.

FLOOR 1



FLOOR 2



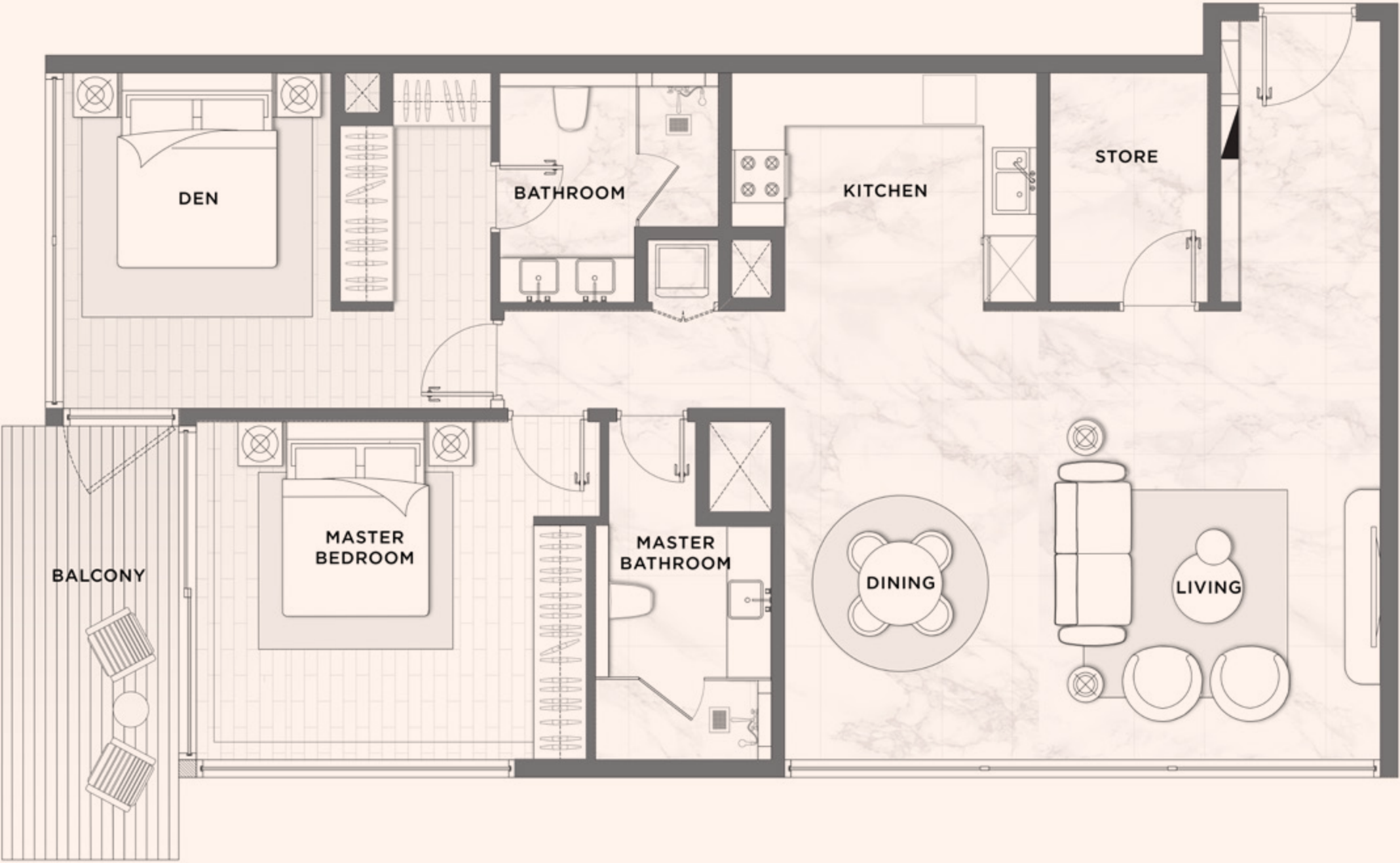
FLOOR 3



FLOOR 4



FLOOR 5







DarGlobal PLC is an international real estate developer specializing in exclusive luxury developments across the world's most coveted cosmopolitan cities .

Catering to global citizens seeking prime investments, second homes, and luxury living, DarGlobal transforms real estate into economic catalysts, unlocking opportunities for both investors and the countries it enters.

DarGlobal has partnered with over 10 world-renowned luxury brands, including Trump Organization, Aston Martin, Automobili Lamborghini, ELIE SAAB, Marriott Residences, Missoni, Mouawad, Pagani Automobili, W Hotels, and Versace. These collaborations offer unique investment opportunities in global cities, providing both wealth growth and protection.

Listed on the London Stock Exchange, DarGlobal goes beyond property development, it drives economic transformation by attracting international clients and Foreign Direct Investment (FDI). By injecting capital, confidence, and industry expertise, DarGlobal enhances local infrastructure while elevating the global appeal of each destination.

With a presence in 14 international cities across 9 countries, DarGlobal's portfolio spans the United Kingdom, Spain, Greece, Saudi Arabia, the UAE, Oman, and Qatar. The company is also expanding into world-class hospitality, developing luxury hotels in Dubai, the Maldives, and Oman.

To support its international clientele, DarGlobal has sales and customer service offices in New York, London, Marbella, Athens, Dubai, Jeddah, Riyadh, Muscat, and Doha.







## OUR OFFICES

### DOHA, QATAR

Malibu Building,  
Lusail Entertainment City,  
Doha, Qatar  
+974 4410 8282

### MUSCAT, OMAN

Royal Opera House Muscat  
Shatti Al Qurum,  
Muscat, Oman  
+968 2270 2771

### LONDON, UK

50 Hans Crescent,  
Knightsbridge, London,  
SW1X 0NA, UK  
+44 20 8135 4699

### DUBAI, UAE

Jumeirah Emirates Towers  
30th Floor, Sheikh Zayed Road,  
PO Box 2523, Dubai, UAE  
+971 4 562 9616

### MARBELLA, SPAIN

Marbella Club Golden Mile,  
Av. Bulevar Principe Alfonso de  
Hohenlohe, Marbella 29602  
Málaga, Spain  
+34 951 121 221

### RIYADH, KSA

2135 Tahlia St.,  
Al Olaya, 12222  
Riyadh, KSA  
+966 800 118 8081

### JEDDAH, KSA

Ash Shati, 23613,  
King Abdulaziz Road,  
Jeddah, KSA  
+966 800 118 8081

### NEW YORK CITY, USA

19th floor - Trump Tower  
New York, 725 5th Ave,  
NY 10022, USA  
+1 212 715 1067

---

For more information on L'Horizon by ELIE SAAB, please call 4410 8282 (Qatar)  
You can visit our website at [darglobal.co.uk](https://darglobal.co.uk) or via our social media platforms







[DARGLOBAL.CO.UK](http://DARGLOBAL.CO.UK)