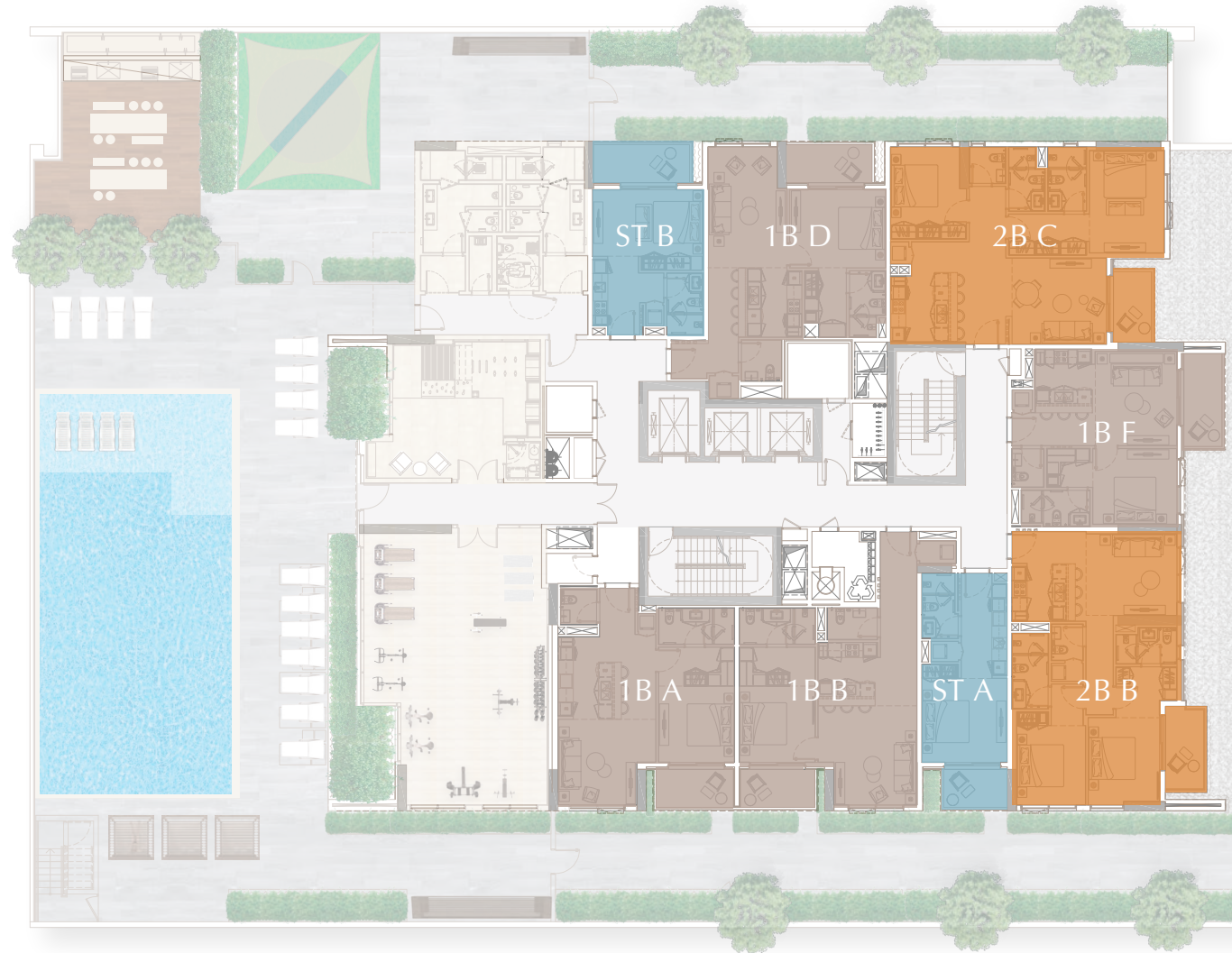




FIRST FLOOR

THE PORTMAN



1ST FLOOR TYPICAL PLAN

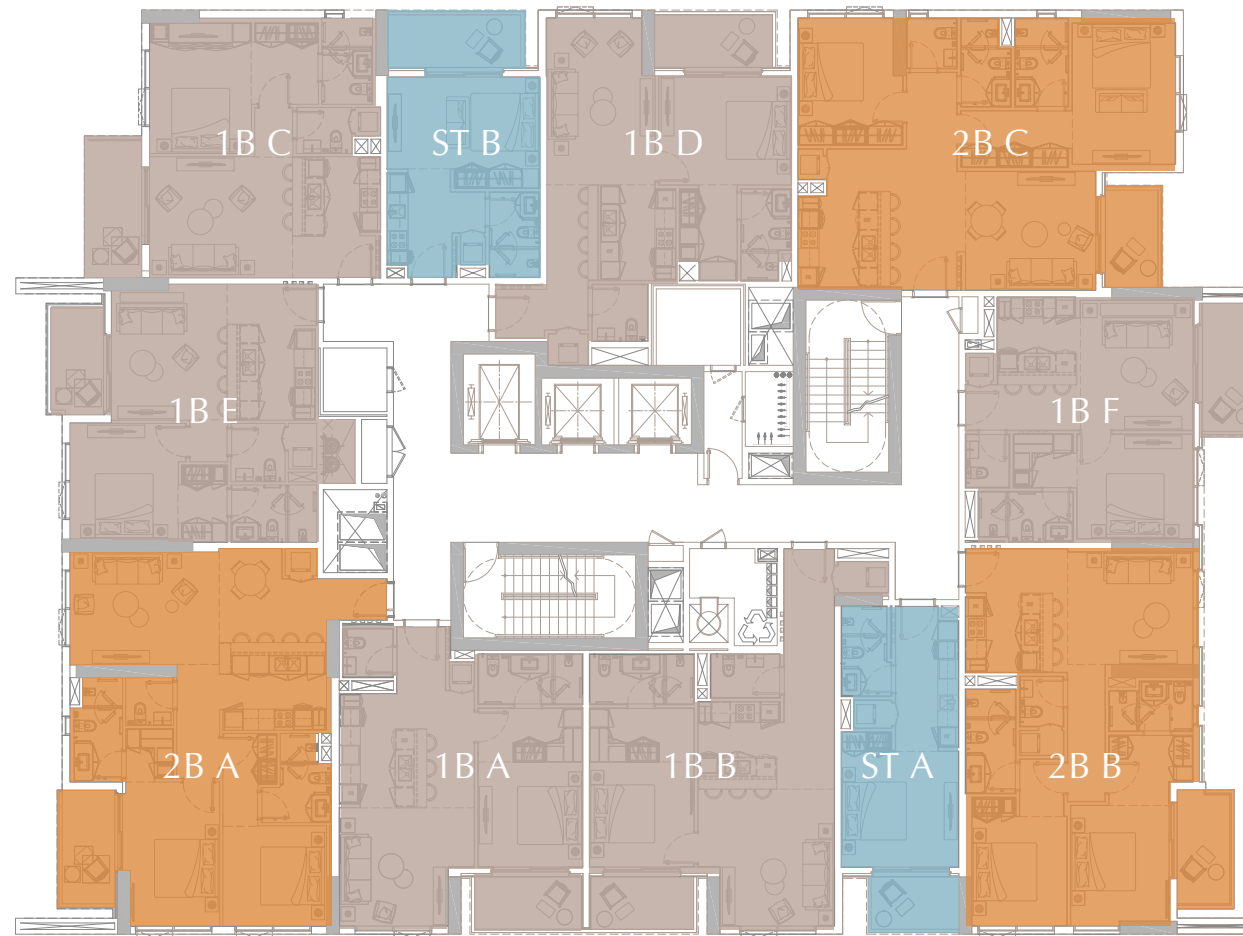
STUDIO
 1 BEDROOM UNIT
 2 BEDROOM UNIT



All drawings and dimensions are approximate. Drawings are not to scale and are subject to change without notice. The developer reserves the right to make revisions. The units are measured at typical floor in the building and columns may vary in size depending on the floor level. The furnishings and accessories shown are for representation only. The length and width of the Unit and balcony varies depending on which floor and which orientation the unit is located within the building to comply with the building authority regulations. Apartment unit sizes may vary. Actual unit sizes will be reflected on the Sales and Purchase Agreement.

2ND - 16TH FLOOR

THE PORTMAN



2ND to 16^H FLOOR TYPICAL PLAN

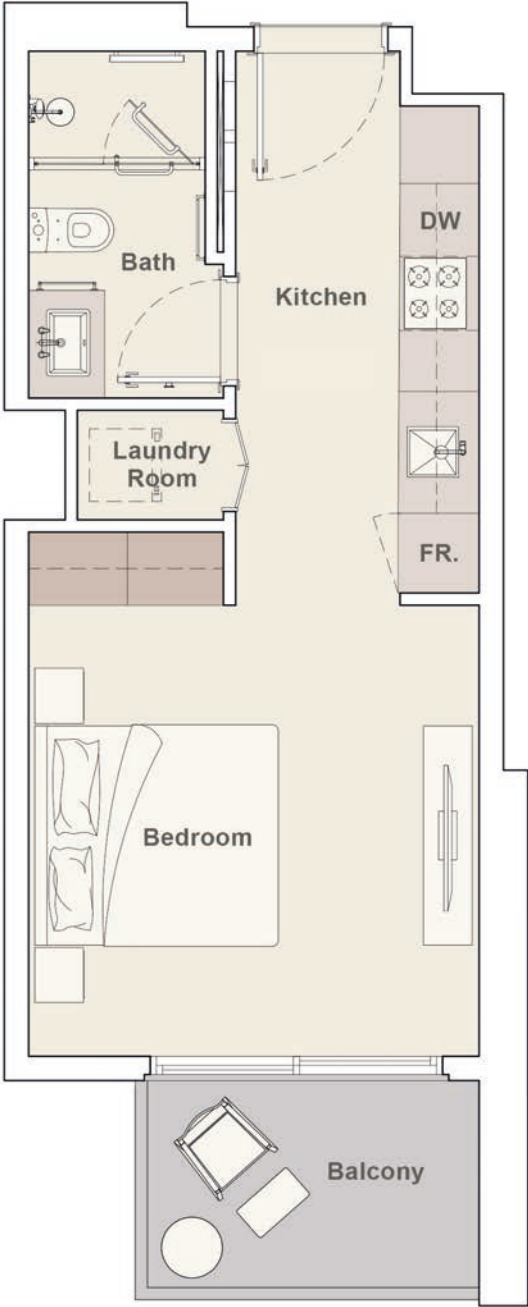
STUDIO
 1 BEDROOM UNIT
 2 BEDROOM UNIT



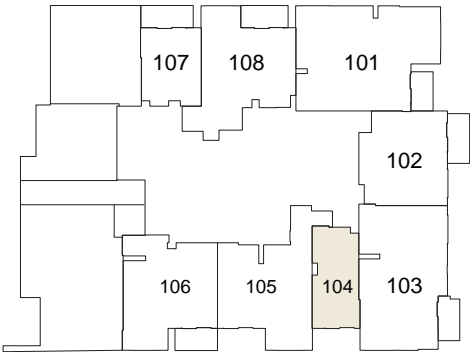
All drawings and dimensions are approximate. Drawings are not to scale and are subject to change without notice. The developer reserves the right to make revisions. The units are measured at typical floor in the building and columns may vary in size depending on the floor level. The furnishings and accessories shown are for representation only. The length and width of the Unit and balcony varies depending on which floor and which orientation the unit is located within the building to comply with the building authority regulations. Apartment unit sizes may vary. Actual unit sizes will be reflected on the Sales and Purchase Agreement.

STUDIO TYPE A

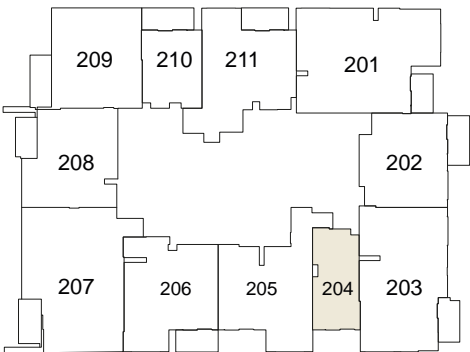
THE PORTMAN



1st Floor



2nd - 16th Floor

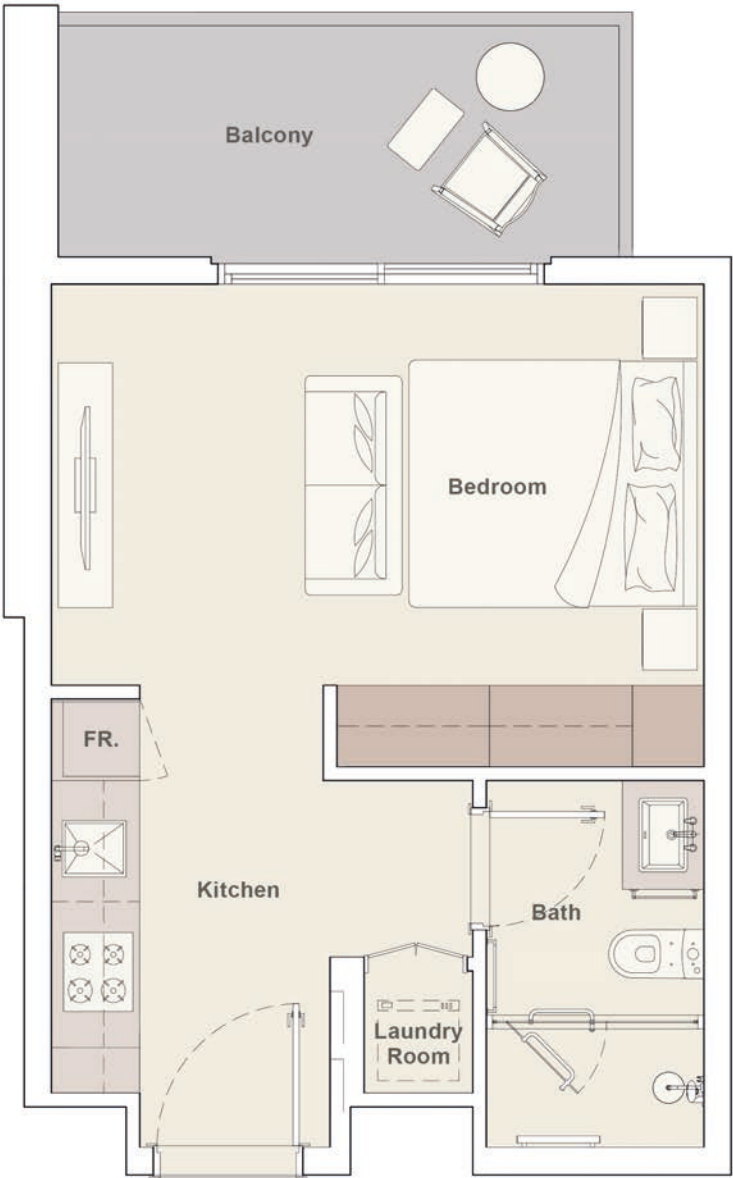


Internal Living Area	349.50 sq.ft.
Outdoor Living Area	59.95 sq.ft.
Total Living Area	409.46 sq.ft.

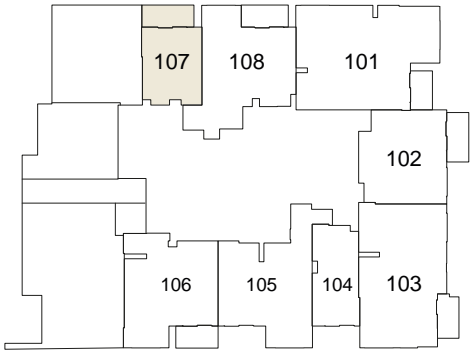
All drawings and dimensions are approximate. Drawings are not to scale and are subject to change without notice. The developer reserves the right to make revisions. The units are measured at typical floor in the building and columns may vary in size depending on the floor level. The furnishings and accessories shown are for representation only. The length and width of the Unit and balcony varies depending on which floor and which orientation the unit is located within the building to comply with the building authority regulations. Apartment unit sizes may vary. Actual unit sizes will be reflected on the Sales and Purchase Agreement.

STUDIO TYPE B

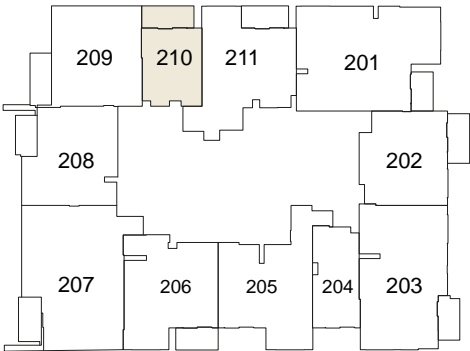
THE PORTMAN



1st Floor



2nd - 16th Floor



Internal Living Area	347.35 sq.ft.
Outdoor Living Area	87.83 sq.ft.
Total Living Area	445.18 sq.ft.

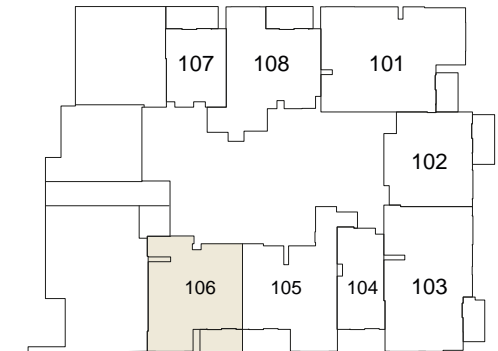
All drawings and dimensions are approximate. Drawings are not to scale and are subject to change without notice. The developer reserves the right to make revisions. The units are measured at typical floor in the building and columns may vary in size depending on the floor level. The furnishings and accessories shown are for representation only. The length and width of the Unit and balcony varies depending on which floor and which orientation the unit is located within the building to comply with the building authority regulations. Apartment unit sizes may vary. Actual unit sizes will be reflected on the Sales and Purchase Agreement.

1 BEDROOM TYPE A

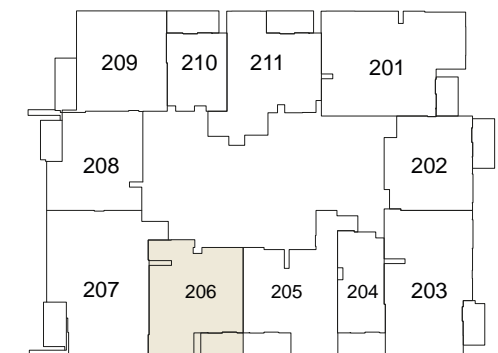
THE PORTMAN



1st Floor



2nd - 16th Floor



Internal Living Area	697.39 sq.ft.
Outdoor Living Area	71.36 sq.ft.
Total Living Area	768.76 sq.ft.

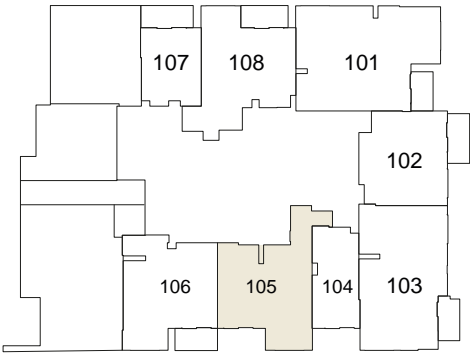
All drawings and dimensions are approximate. Drawings are not to scale and are subject to change without notice. The developer reserves the right to make revisions. The units are measured at typical floor in the building and columns may vary in size depending on the floor level. The furnishings and accessories shown are for representation only. The length and width of the Unit and balcony varies depending on which floor and which orientation the unit is located within the building to comply with the building authority regulations. Apartment unit sizes may vary. Actual unit sizes will be reflected on the Sales and Purchase Agreement.

1 BEDROOM TYPE B

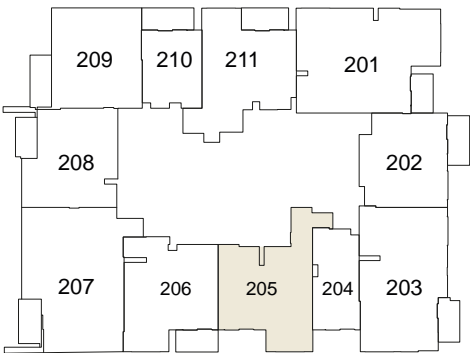
THE PORTMAN



1st Floor



2nd - 16th Floor

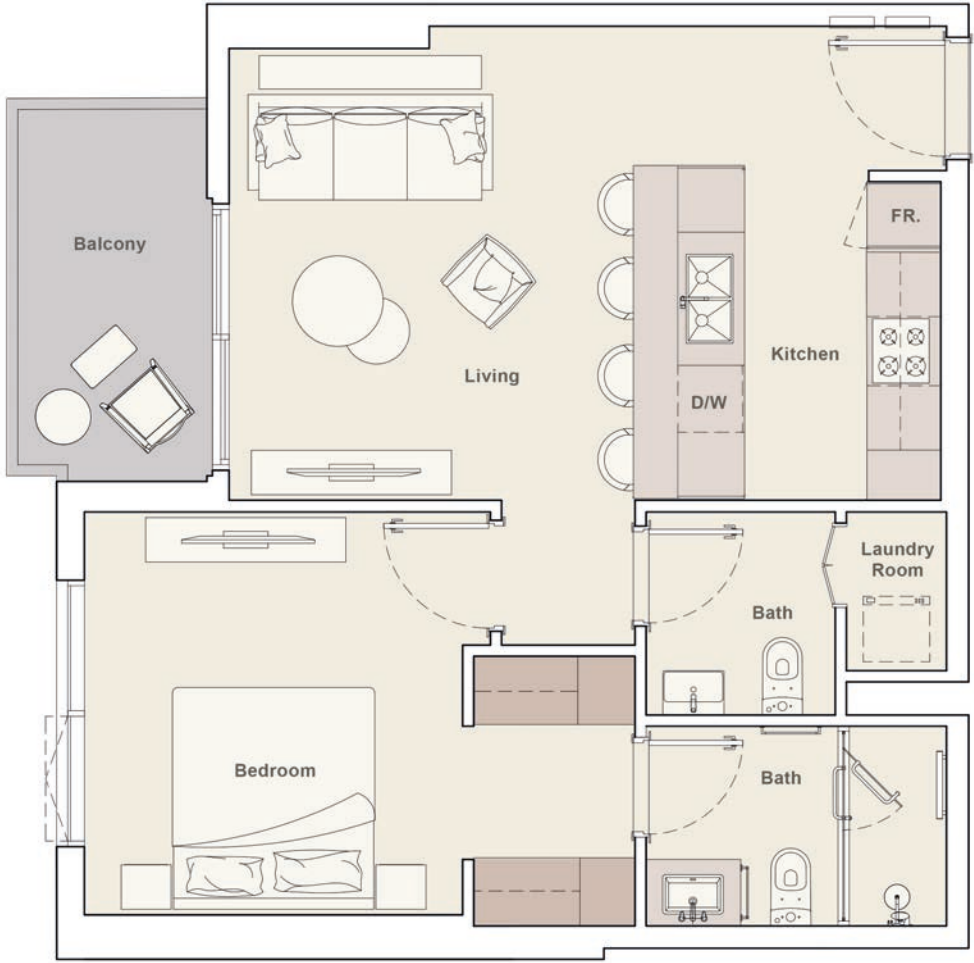


Internal Living Area	754.55 sq.ft.
Outdoor Living Area	68.89 sq.ft.
Total Living Area	823.44 sq.ft.

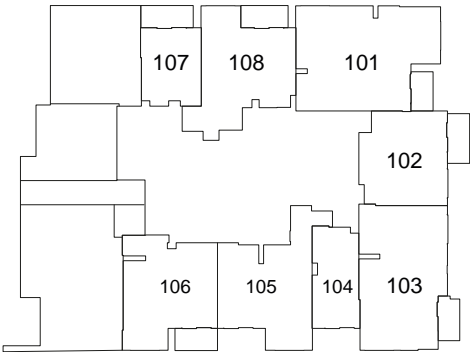
All drawings and dimensions are approximate. Drawings are not to scale and are subject to change without notice. The developer reserves the right to make revisions. The units are measured at typical floor in the building and columns may vary in size depending on the floor level. The furnishings and accessories shown are for representation only. The length and width of the Unit and balcony varies depending on which floor and which orientation the unit is located within the building to comply with the building authority regulations. Apartment unit sizes may vary. Actual unit sizes will be reflected on the Sales and Purchase Agreement.

1 BEDROOM TYPE C

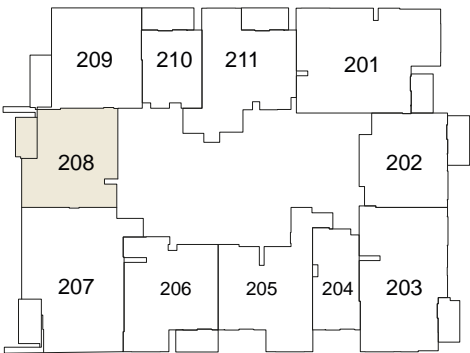
THE PORTMAN



1st Floor



2nd - 16th Floor



Internal Living Area	644.00 sq.ft.
Outdoor Living Area	69.86 sq.ft.
Total Living Area	716.86 sq.ft.

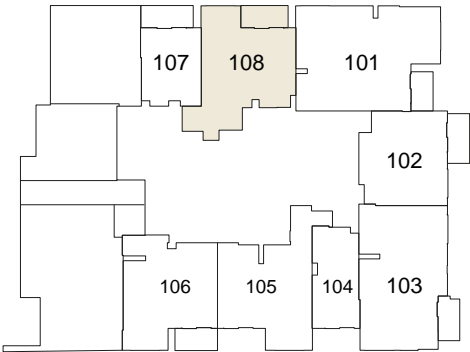
All drawings and dimensions are approximate. Drawings are not to scale and are subject to change without notice. The developer reserves the right to make revisions. The units are measured at typical floor in the building and columns may vary in size depending on the floor level. The furnishings and accessories shown are for representation only. The length and width of the Unit and balcony varies depending on which floor and which orientation the unit is located within the building to comply with the building authority regulations. Apartment unit sizes may vary. Actual unit sizes will be reflected on the Sales and Purchase Agreement.

1 BEDROOM TYPE D

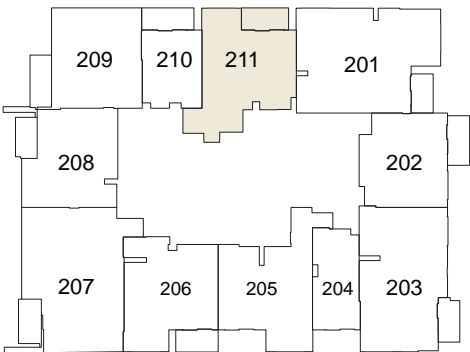
THE PORTMAN



1st Floor



2nd - 16th Floor

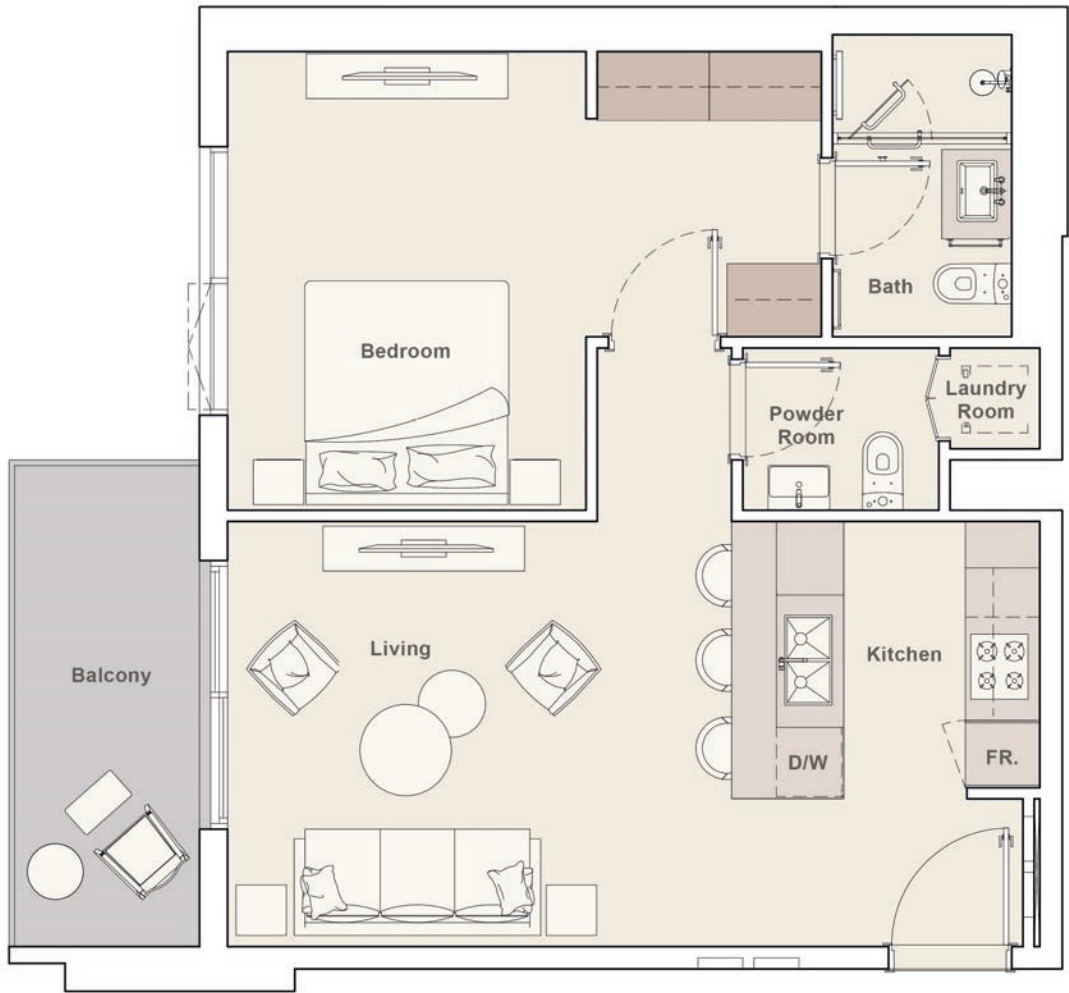


Internal Living Area	738.40 sq.ft.
Outdoor Living Area	79.22 sq.ft.
Total Living Area	817.63 sq.ft.

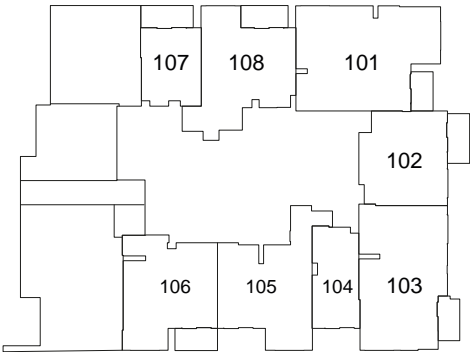
All drawings and dimensions are approximate. Drawings are not to scale and are subject to change without notice. The developer reserves the right to make revisions. The units are measured at typical floor in the building and columns may vary in size depending on the floor level. The furnishings and accessories shown are for representation only. The length and width of the Unit and balcony varies depending on which floor and which orientation the unit is located within the building to comply with the building authority regulations. Apartment unit sizes may vary. Actual unit sizes will be reflected on the Sales and Purchase Agreement.

1 BEDROOM TYPE E

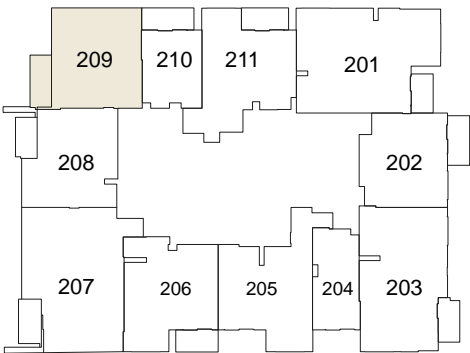
THE PORTMAN



1st Floor



2nd - 16th Floor

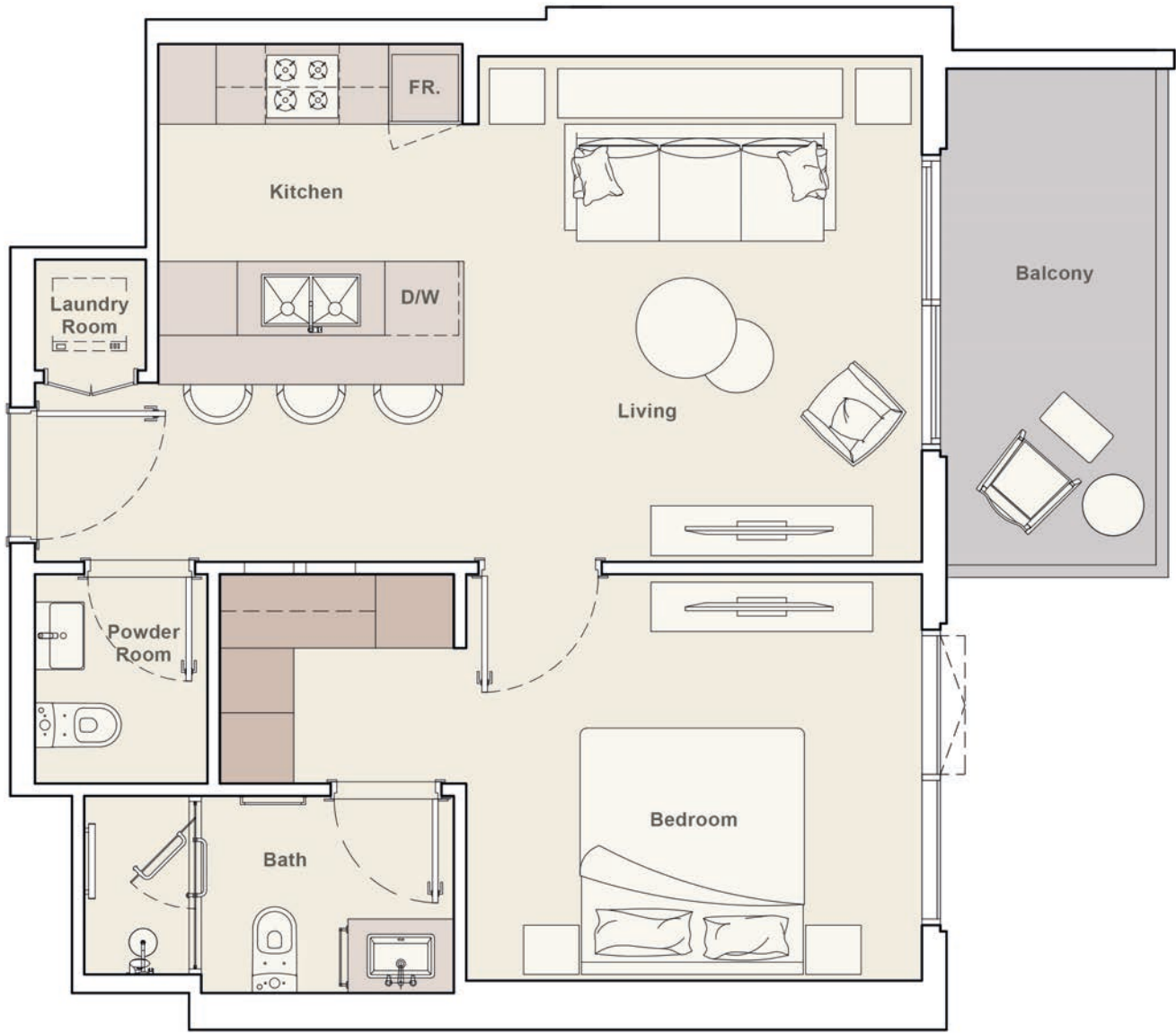


Internal Living Area	660.80 sq.ft.
Outdoor Living Area	88.37 sq.ft.
Total Living Area	749.17 sq.ft.

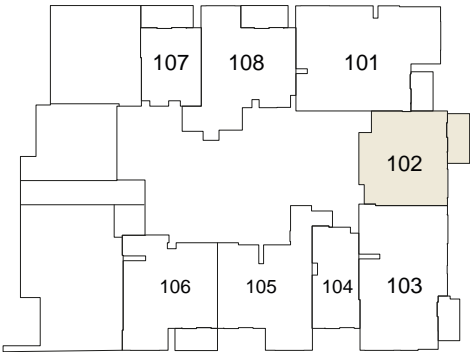
All drawings and dimensions are approximate. Drawings are not to scale and are subject to change without notice. The developer reserves the right to make revisions. The units are measured at typical floor in the building and columns may vary in size depending on the floor level. The furnishings and accessories shown are for representation only. The length and width of the Unit and balcony varies depending on which floor and which orientation the unit is located within the building to comply with the building authority regulations. Apartment unit sizes may vary. Actual unit sizes will be reflected on the Sales and Purchase Agreement.

1 BEDROOM TYPE F

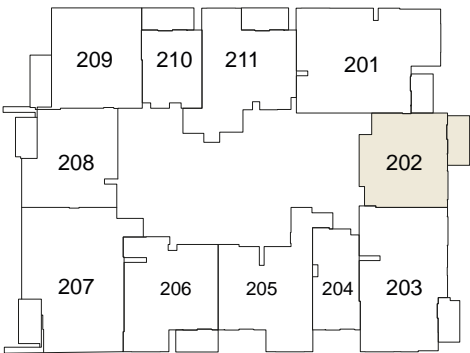
THE PORTMAN



1st Floor



2nd - 16th Floor



Internal Living Area	599.01 sq.ft.
Outdoor Living Area	83.31 sq.ft
Total Living Area	682.32 sq.ft.

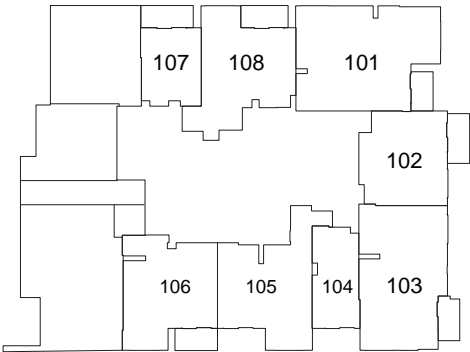
All drawings and dimensions are approximate. Drawings are not to scale and are subject to change without notice. The developer reserves the right to make revisions. The units are measured at typical floor in the building and columns may vary in size depending on the floor level. The furnishings and accessories shown are for representation only. The length and width of the Unit and balcony varies depending on which floor and which orientation the unit is located within the building to comply with the building authority regulations. Apartment unit sizes may vary. Actual unit sizes will be reflected on the Sales and Purchase Agreement.

2 BEDROOM TYPE A

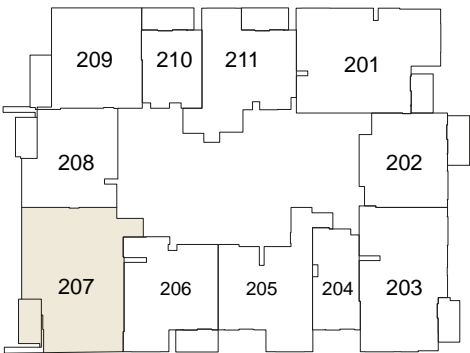
THE PORTMAN



1st Floor



2nd - 16th Floor

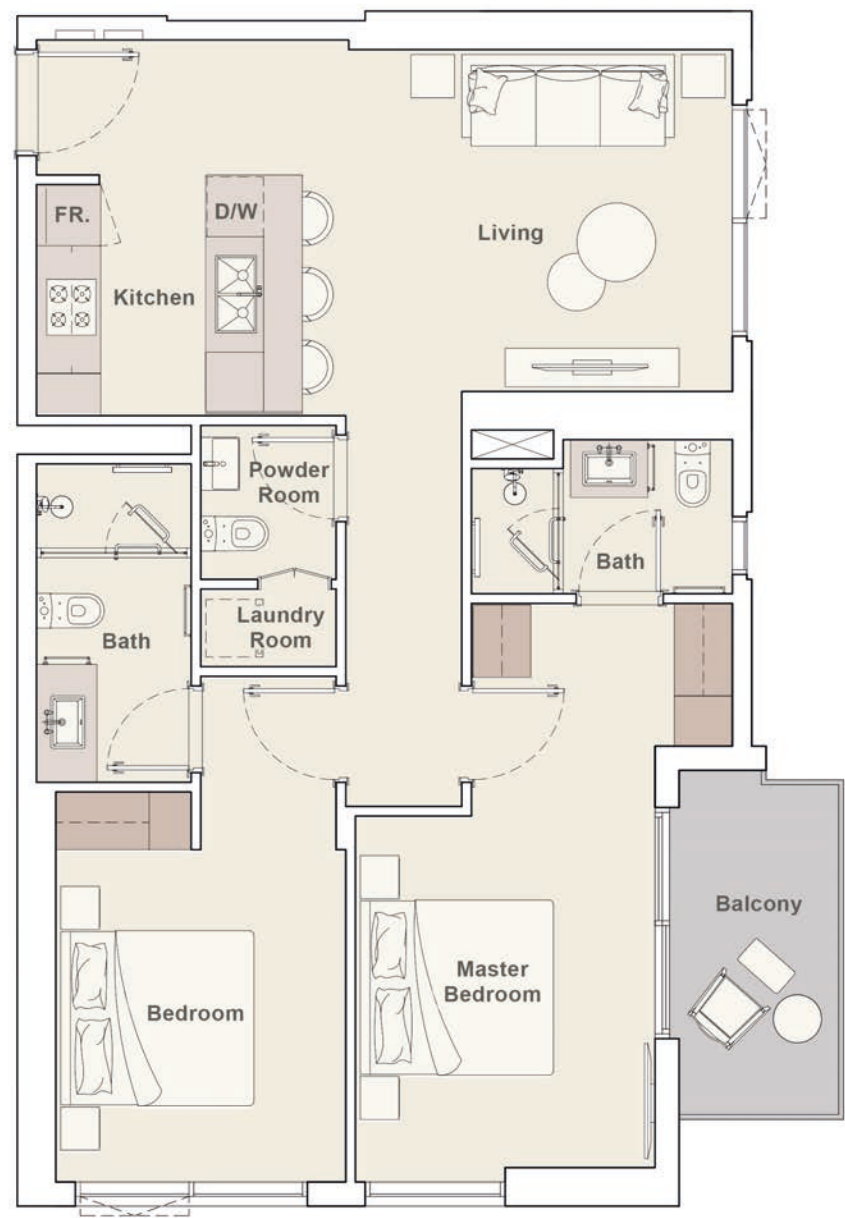


Internal Living Area	1022.46 sq.ft.
Outdoor Living Area	77.07 sq.ft.
Total Living Area	1099.53 sq.ft.

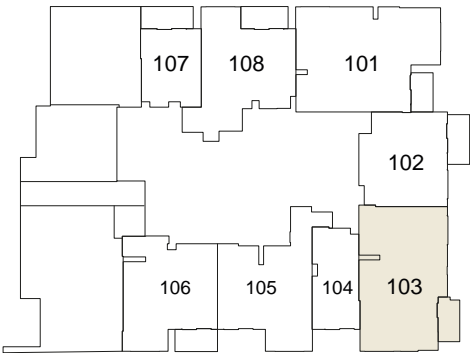
All drawings and dimensions are approximate. Drawings are not to scale and are subject to change without notice. The developer reserves the right to make revisions. The units are measured at typical floor in the building and columns may vary in size depending on the floor level. The furnishings and accessories shown are for representation only. The length and width of the Unit and balcony varies depending on which floor and which orientation the unit is located within the building to comply with the building authority regulations. Apartment unit sizes may vary. Actual unit sizes will be reflected on the Sales and Purchase Agreement.

2 BEDROOM TYPE B

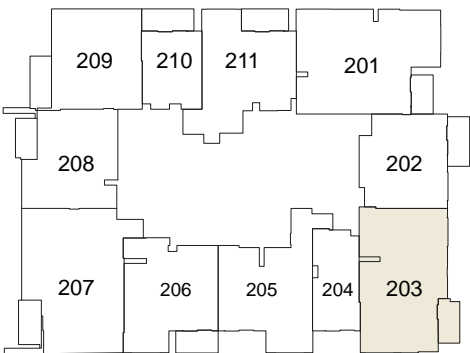
THE PORTMAN



1st Floor



2nd - 16th Floor



Internal Living Area	906.86 sq.ft.
Outdoor Living Area	71.26 sq.ft.
Total Living Area	978.12 sq.ft.

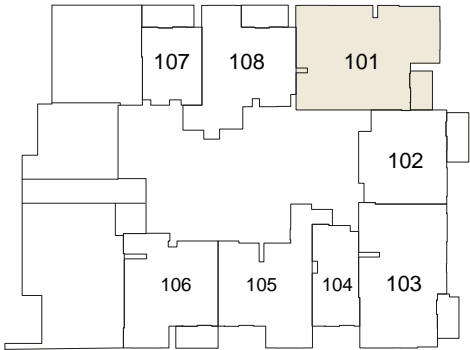
All drawings and dimensions are approximate. Drawings are not to scale and are subject to change without notice. The developer reserves the right to make revisions. The units are measured at typical floor in the building and columns may vary in size depending on the floor level. The furnishings and accessories shown are for representation only. The length and width of the Unit and balcony varies depending on which floor and which orientation the unit is located within the building to comply with the building authority regulations. Apartment unit sizes may vary. Actual unit sizes will be reflected on the Sales and Purchase Agreement.

2 BEDROOM TYPE C

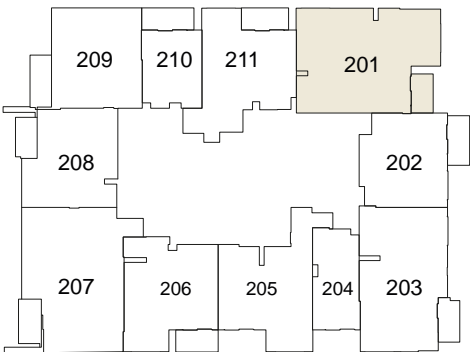
THE PORTMAN



1st Floor



2nd - 16th Floor

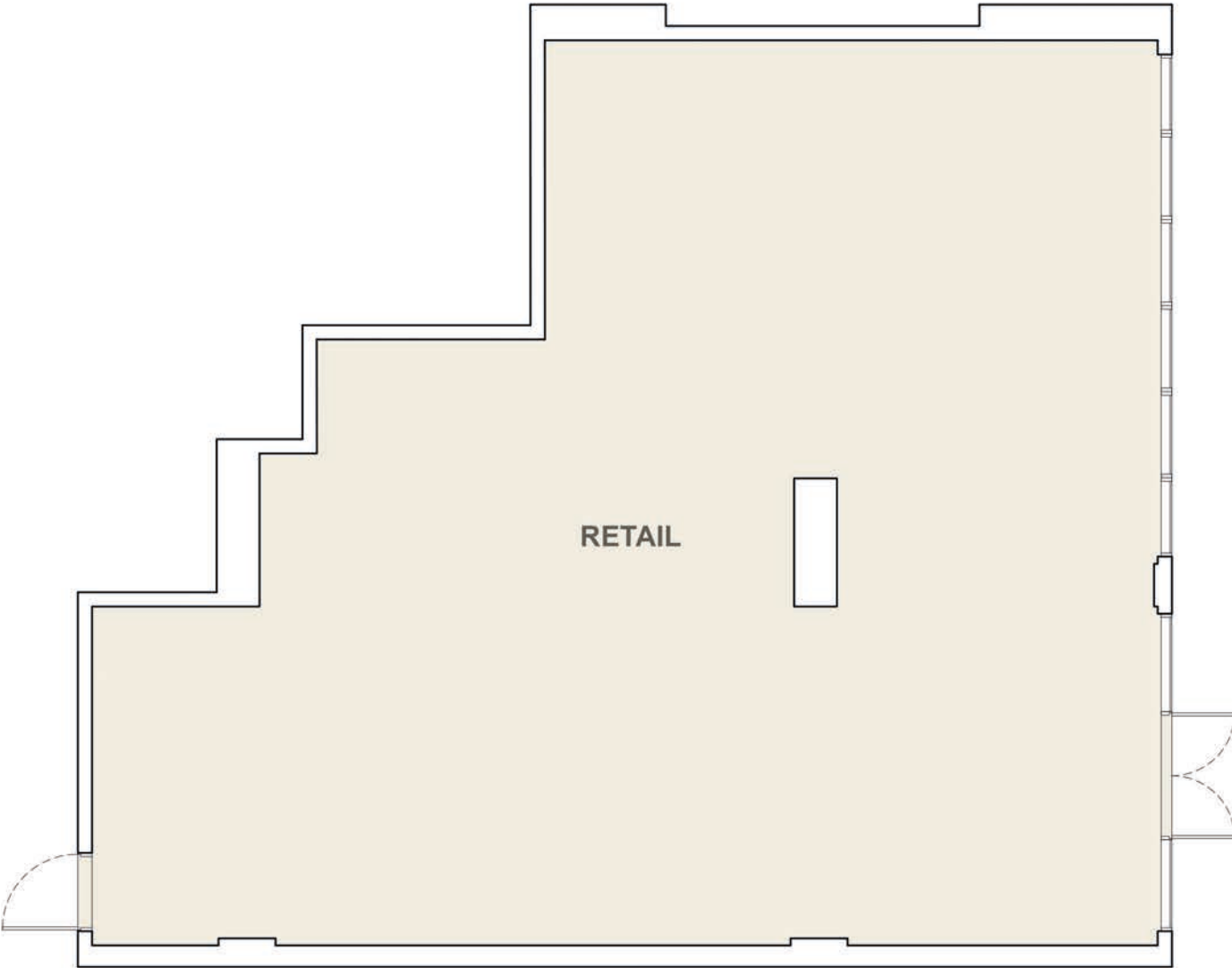


Internal Living Area	1,025.59 sq.ft.
Outdoor Living Area	65.88 sq.ft.
Total Living Area	1,091.46 sq.ft.

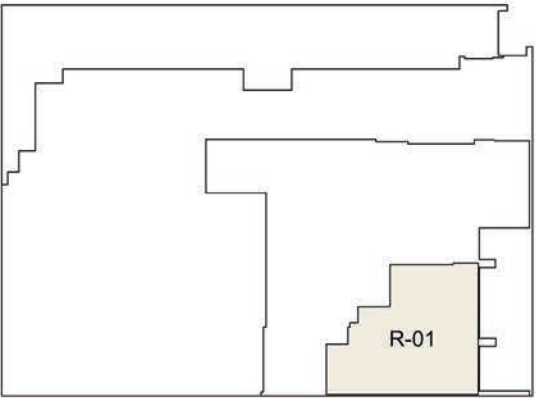
All drawings and dimensions are approximate. Drawings are not to scale and are subject to change without notice. The developer reserves the right to make revisions. The units are measured at typical floor in the building and columns may vary in size depending on the floor level. The furnishings and accessories shown are for representation only. The length and width of the Unit and balcony varies depending on which floor and which orientation the unit is located within the building to comply with the building authority regulations. Apartment unit sizes may vary. Actual unit sizes will be reflected on the Sales and Purchase Agreement.

RETAIL

THE PORTMAN



Ground Floor



Internal Living Area	1,724.49 sq.ft.
Outdoor Living Area	00.00 sq.ft.
Total Living Area	1,724.49 sq.ft.

All drawings and dimensions are approximate. Drawings are not to scale and are subject to change without notice. The developer reserves the right to make revisions. The units are measured at typical floor in the building and columns may vary in size depending on the floor level. The furnishings and accessories shown are for representation only. The length and width of the Unit and balcony varies depending on which floor and which orientation the unit is located within the building to comply with the building authority regulations. Apartment unit sizes may vary. Actual unit sizes will be reflected on the Sales and Purchase Agreement.



LIVE IN *DESIGN*

ELLINGTONPROPERTIES.AE