



# COSTA MARE

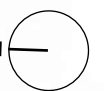
TOWER II  
FLOOR PLAN





## GROUND FLOOR TYPICAL PLAN


-  1 - Bedroom
-  2 - Bedroom
-  2 - Bedroom + S
-  RETAIL

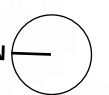






# 1<sup>st</sup>, 2<sup>nd</sup> & 3<sup>rd</sup> FLOOR TYPICAL PLAN

-  Studio
-  1 - Bedroom
-  2 - Bedroom
-  2 - Bedroom + S

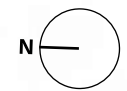






# 4<sup>th</sup> FLOOR TYPICAL PLAN

- Studio
- 1 - Bedroom
- 2 - Bedroom
- 2 - Bedroom + S





WYNN CASINO  
VIEW

ISLAND  
VIEW

ARABIAN GULF  
VIEW

ISLAND  
VIEW

## 5<sup>th</sup> - 10<sup>th</sup> FLOOR TYPICAL PLAN

- Studio
- 1 - Bedroom
- 2 - Bedroom
- 2 - Bedroom + S





WYNN CASINO  
VIEW

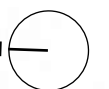
ISLAND  
VIEW

ARABIAN GULF  
VIEW



## 11<sup>th</sup> FLOOR TYPICAL PLAN

- Studio
- 1 - Bedroom
- 2 - Bedroom
- 2 - Bedroom + S

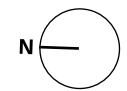






# 14<sup>th</sup>, 15<sup>th</sup>, 16<sup>th</sup> 19<sup>th</sup> & 20<sup>th</sup> FLOOR TYPICAL PLAN

-  Studio
-  1 - Bedroom
-  2 - Bedroom
-  2 - Bedroom + S
-  3 - Bedroom

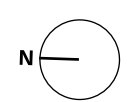






# 17<sup>th</sup> FLOOR TYPICAL PLAN

- Studio
- 1 - Bedroom
- 2 - Bedroom
- 2 - Bedroom + S
- 3 - Bedroom Duplex

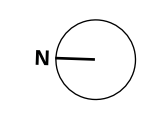






# 18<sup>th</sup> FLOOR TYPICAL PLAN

-  Studio
-  1 - Bedroom
-  2 - Bedroom
-  2 - Bedroom + S
-  3 - Bedroom Duplex





# STUDIO

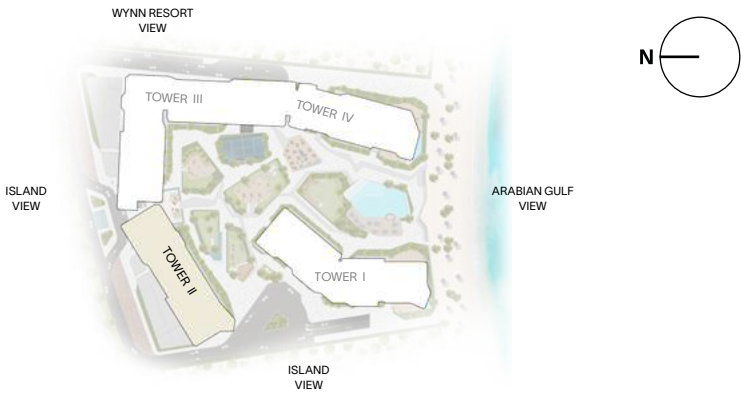
## TYPE A



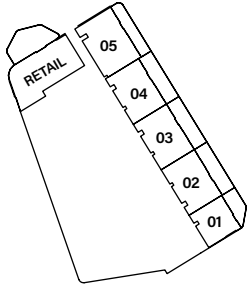
Internal Living Area : **339.39 sq. ft.**

Outdoor Living Area : **53.47 sq. ft.**

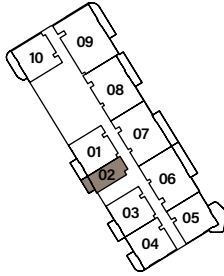
Total Living Area : **393.85 sq. ft.**



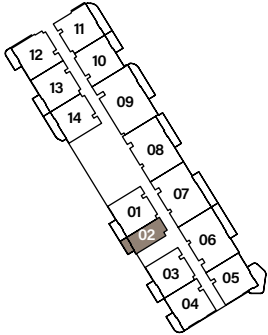
Ground Floor



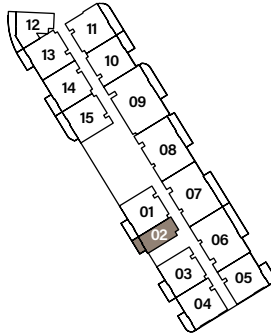
1<sup>st</sup> - 3<sup>rd</sup> Floor



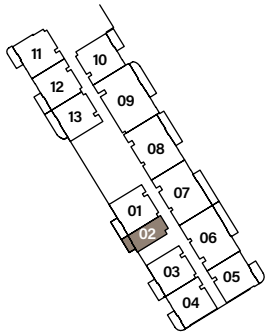
4<sup>th</sup> Floor



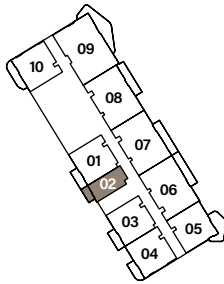
5<sup>th</sup> - 10<sup>th</sup> Floor



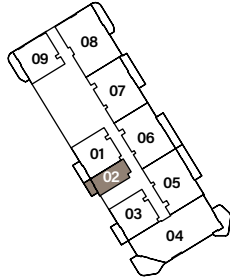
11<sup>th</sup> Floor



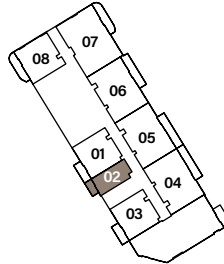
14<sup>th</sup> - 16<sup>th</sup> & 19<sup>th</sup> - 20<sup>th</sup> Floor



17<sup>th</sup> Floor



18<sup>th</sup> Floor



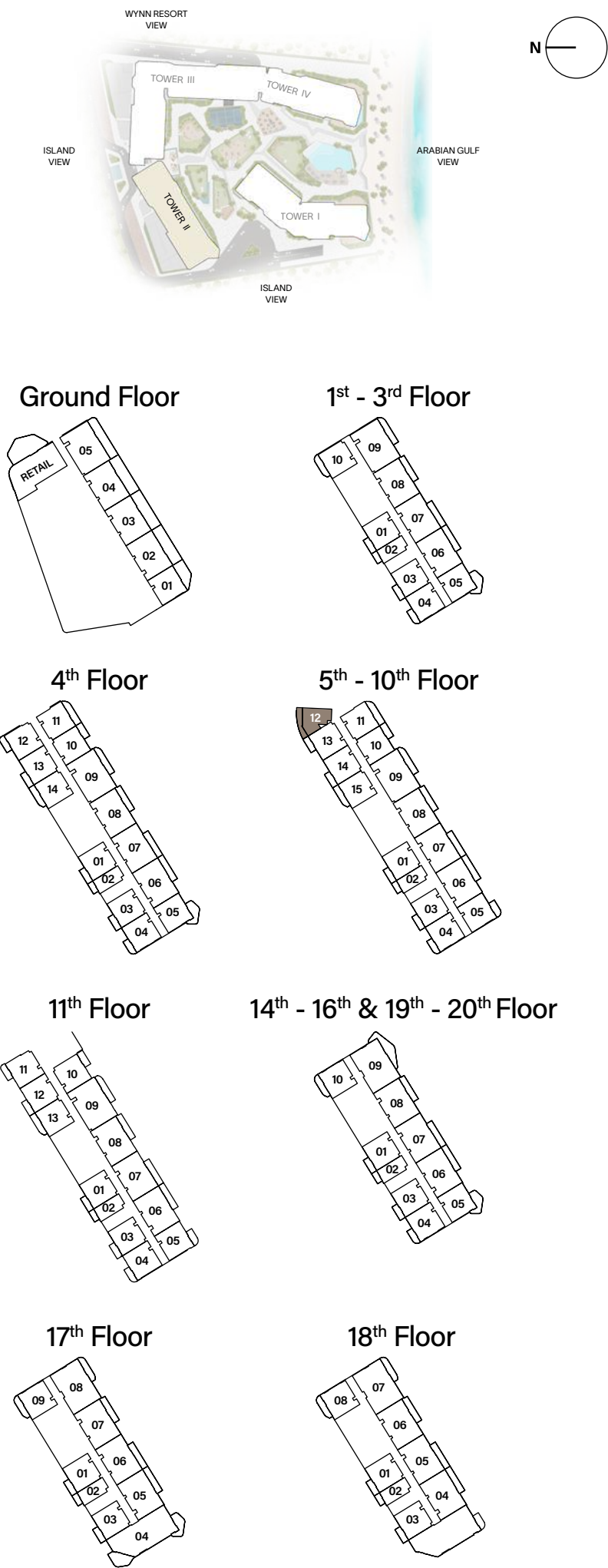


# STUDIO

## TYPE B



Internal Living Area : **470.71 sq. ft.**      Outdoor Living Area : **135.84 sq. ft.**      Total Living Area : **606.55 sq. ft.**



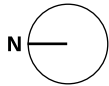


# 1 - BEDROOM

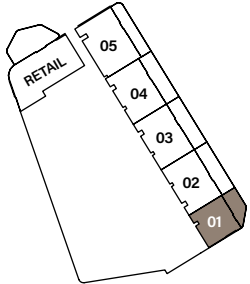
## TYPE B



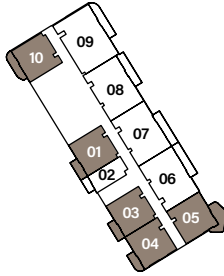
Internal Living Area : 639.05 sq. ft.      Outdoor Living Area : 78.79 sq. ft.      Total Living Area : 717.85 sq. ft.



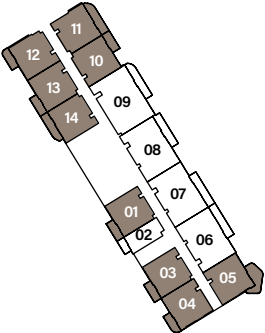
Ground Floor



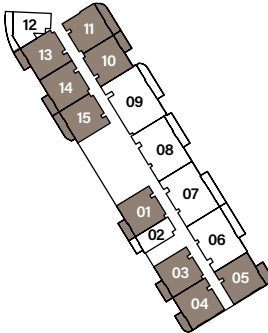
1<sup>st</sup> - 3<sup>rd</sup> Floor



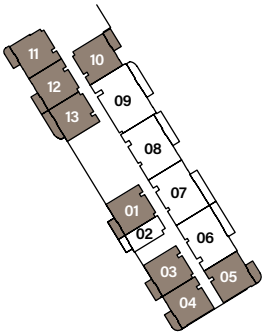
4<sup>th</sup> Floor



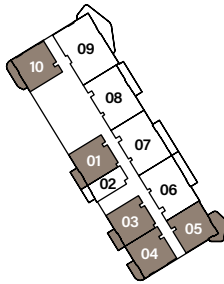
5<sup>th</sup> - 10<sup>th</sup> Floor



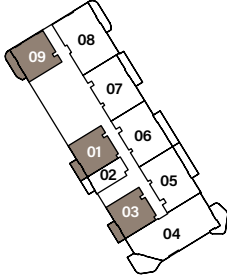
11<sup>th</sup> Floor



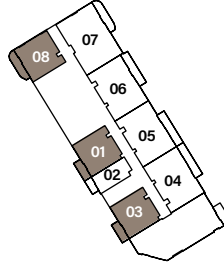
14<sup>th</sup> - 16<sup>th</sup> & 19<sup>th</sup> - 20<sup>th</sup> Floor



17<sup>th</sup> Floor



18<sup>th</sup> Floor



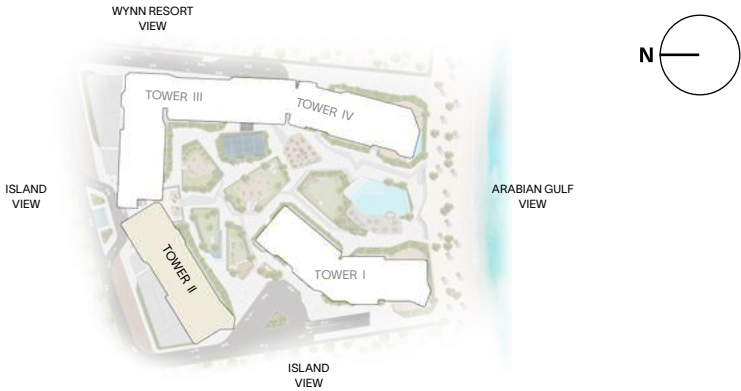


# 2 - BEDROOM

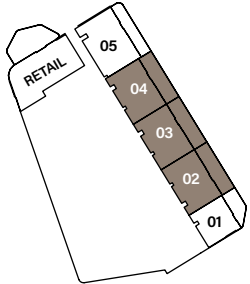
## TYPE A



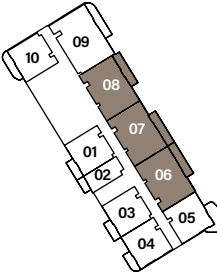
Internal Living Area : **959.82 sq. ft.**      Outdoor Living Area : **137.89 sq. ft.**      Total Living Area : **1097.70 sq. ft.**



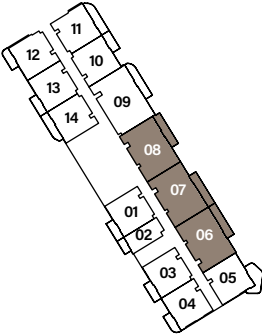
Ground Floor



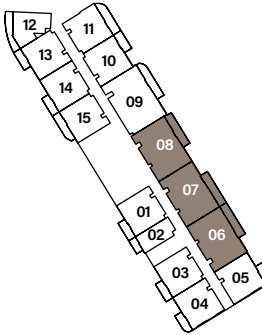
1<sup>st</sup> - 3<sup>rd</sup> Floor



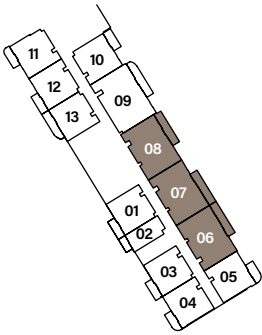
4<sup>th</sup> Floor



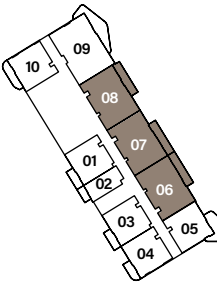
5<sup>th</sup> - 10<sup>th</sup> Floor



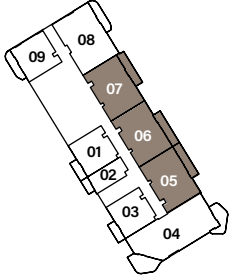
11<sup>th</sup> Floor



14<sup>th</sup> - 16<sup>th</sup> & 19<sup>th</sup> - 20<sup>th</sup> Floor



17<sup>th</sup> Floor



18<sup>th</sup> Floor



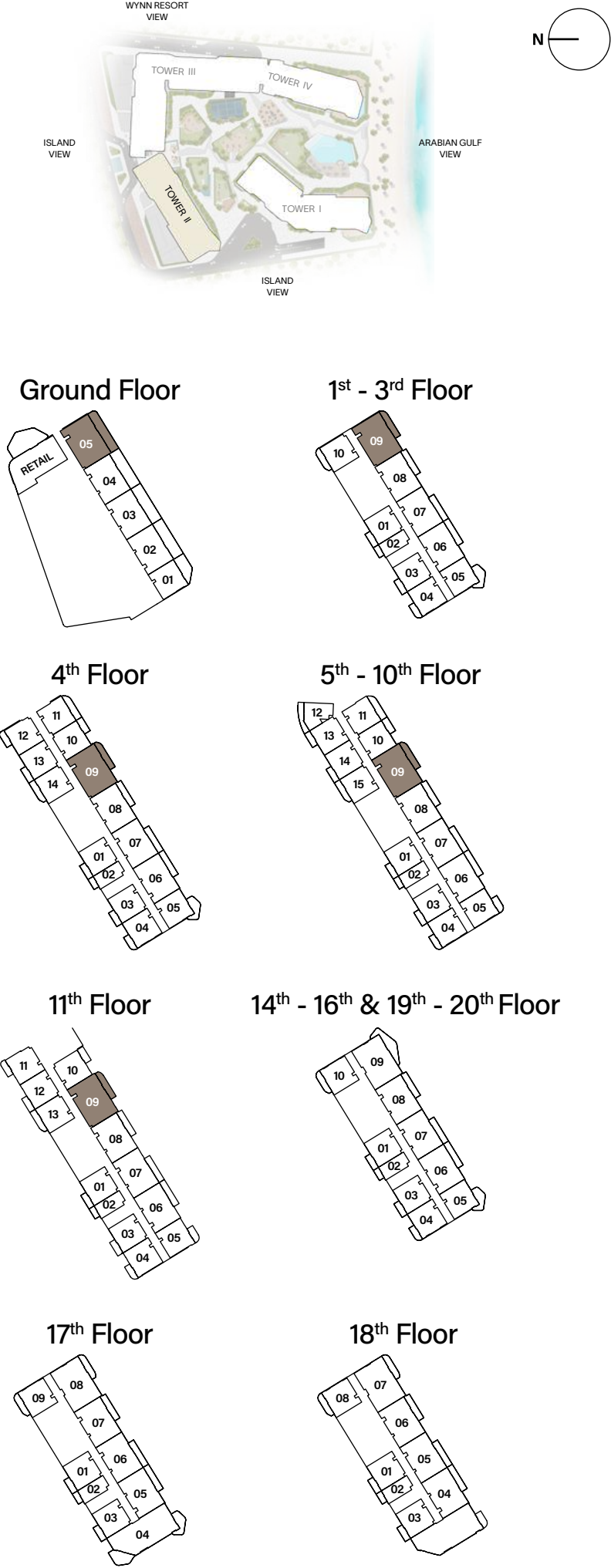


# 2 - BEDROOM + STUDY

## TYPE A



Internal Living Area : 1152.17 sq. ft.      Outdoor Living Area : 125.94 sq. ft.      Total Living Area : 1278.11 sq. ft.





# 2 - BEDROOM + STUDY

## TYPE B



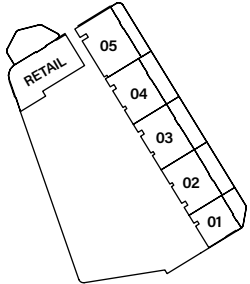
Internal Living Area : 1150.77 sq. ft.

Outdoor Living Area : 150.16 sq. ft.

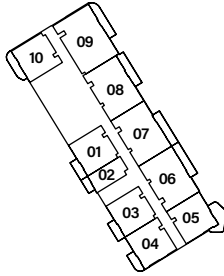
Total Living Area : 1300.93 sq. ft.



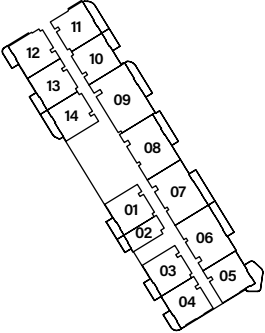
Ground Floor



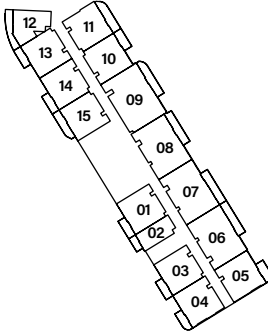
1st - 3rd Floor



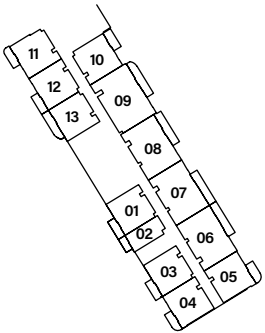
4th Floor



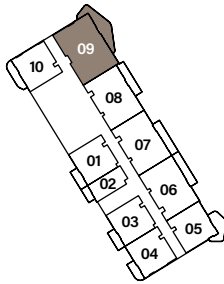
5th - 10th Floor



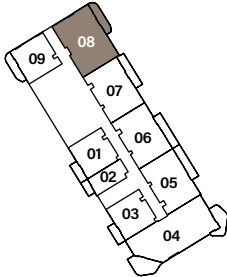
11th Floor



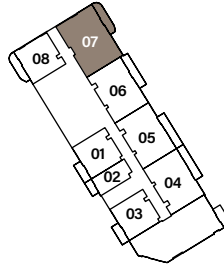
14th - 16th & 19th - 20th Floor



17th Floor



18th Floor



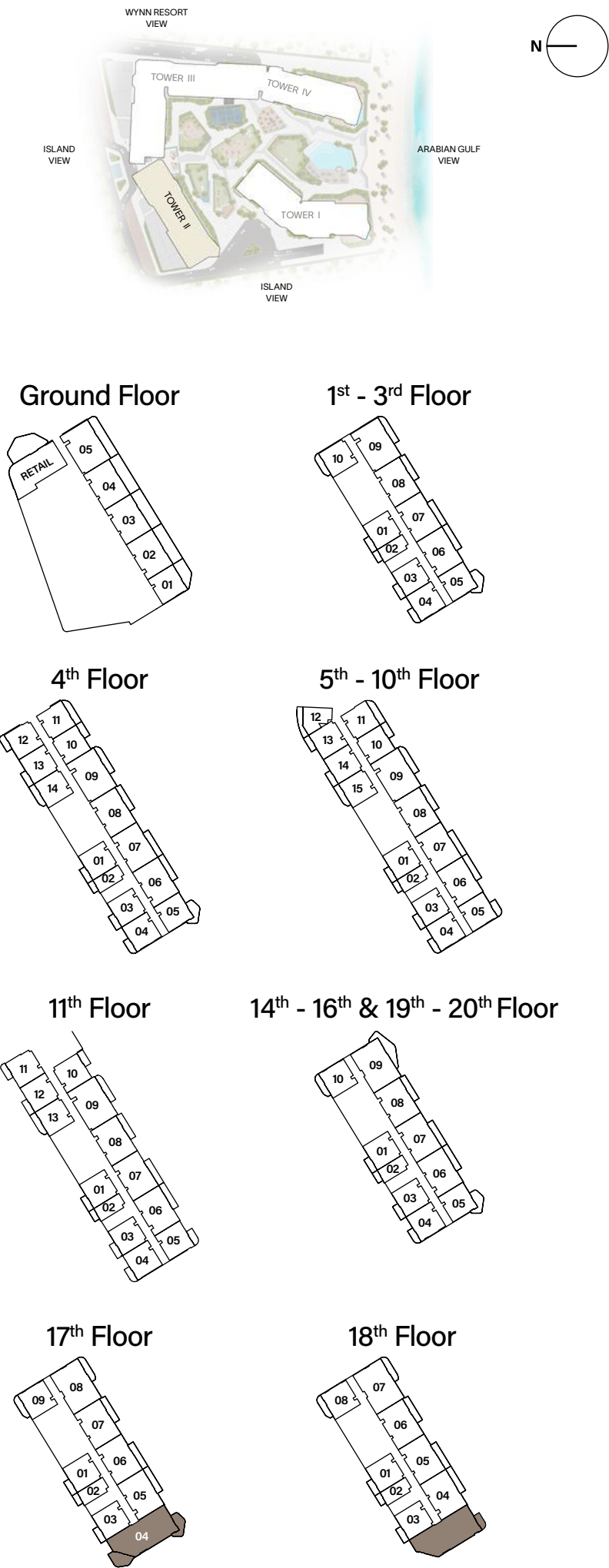


# 3 - BEDROOM DUPLEX

## TYPE A



Internal Living Area : **2682.15 sq. ft.**      Outdoor Living Area : **499.12 sq. ft.**      Total Living Area : **3181.27 sq. ft.**







ELLINGTON  
P R O P E R T I E S

800 8288  
[info@ellingtongroup.com](mailto:info@ellingtongroup.com)

[ELLINGTONPROPERTIES.AE](http://ELLINGTONPROPERTIES.AE)

The renderings and visualizations contained in this brochure are provided for illustrative and marketing purposes. While the information provided is believed to be accurate and reliable at the time of printing, only the information contained in the final Sales and Purchase Agreement will have any legal effect.