

# Hilton®

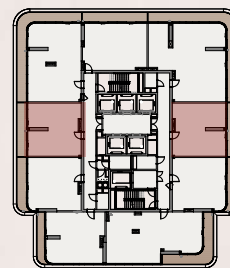
RESIDENCES  
DUBAI MARITIME CITY



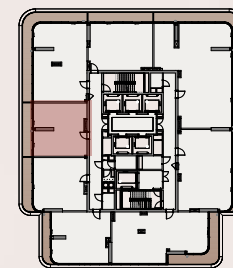
## Unit Plans

Name	Area (m <sup>2</sup> )	Area (ft <sup>2</sup> )
Suite	67	724
Balcony	12	133
TotalArea	79	857

### 1 BR TYPE A



Level 3-8 & 11-16



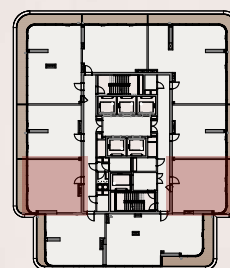
Level 19-24 & 27-31



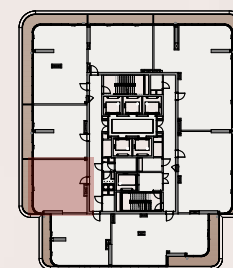
## Unit Plans

Name	Area (m <sup>2</sup> )	Area (ft <sup>2</sup> )
Suite	66	718
Balcony	13	133
Total Area	79	851

### 1 BR TYPE B



Level 3-8 & 11-16



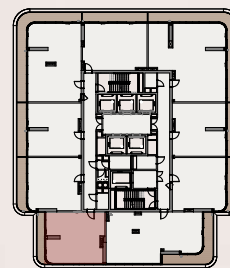
Level 19-24 & 27-31



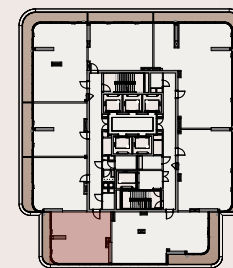
## Unit Plans

Name	Area (m <sup>2</sup> )	Area (ft <sup>2</sup> )
Suite	72	772
Balcony	09	101
Total Area	81	873

### 1 BR TYPE C



Level 3-8 & 11-16



Level 19-24 & 27-31

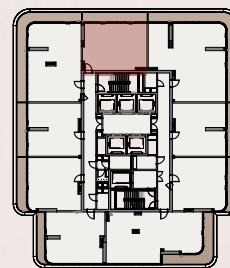




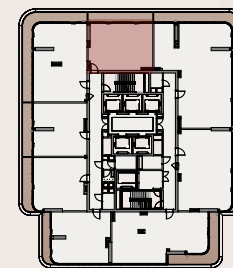
## Unit Plans

Name	Area (m <sup>2</sup> )	Area (ft <sup>2</sup> )
Suite	72	781
Balcony	15	162
Total Area	87	943

### 1 BR TYPE D



Level 3-8 & 11-16



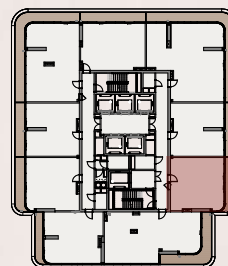
Level 19-24 & 27-31



## Unit Plans

Name	Area (m <sup>2</sup> )	Area (ft <sup>2</sup> )
Suite	66	709
Balcony	13	137
Total Area	79	846

### 1 BR TYPE E



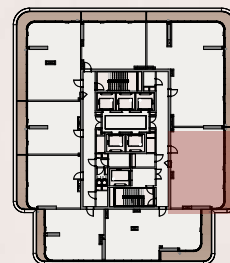
Level 3-8 & 11-16



## Unit Plans

Name	Area (m <sup>2</sup> )	Area (ft <sup>2</sup> )
Suite	100	1084
Balcony	18	201
Total Area	118	1285

## TYPICAL 2 BR A



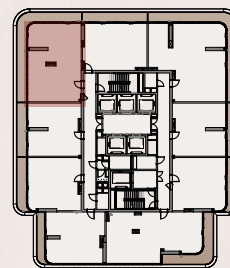
Level 19-24 & 27-31



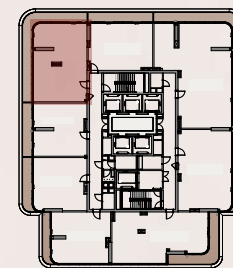
## Unit Plans

Name	Area (m <sup>2</sup> )	Area (ft <sup>2</sup> )
Suite	98	1059
Balcony	32	345
Total Area	130	1404

## TYPICAL 2 BR B



Level 3-8 & 11-16



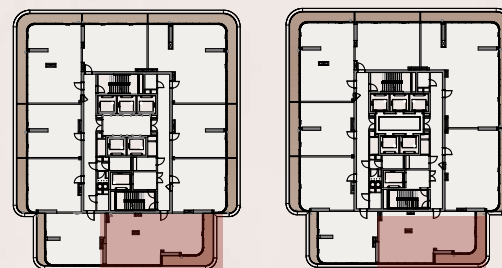
Level 19-24 & 27-31



## Unit Plans

Name	Area (m <sup>2</sup> )	Area (ft <sup>2</sup> )
Suite Area	107	1155
Balcony	21	227
Total Area	128	1382

## TYPICAL 2 BR C



Level 3-8 & 11-16

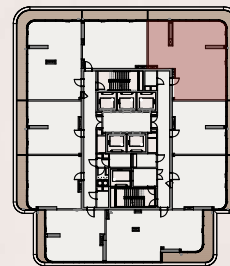
Level 19-24 & 27-31



## Unit Plans

Name	Area (m <sup>2</sup> )	Area (ft <sup>2</sup> )
Suite	123	1327
Balcony	37	403
Total Area	160	1730

2BR + MAID (A)



Level 3-8 & 11-16

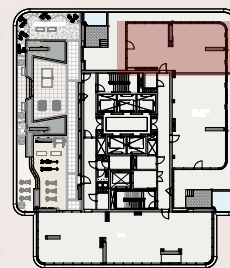




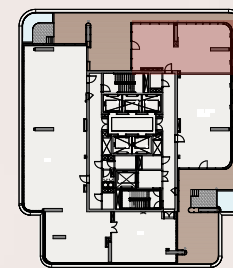
## Unit Plans

Name	Area (m <sup>2</sup> )	Area (ft <sup>2</sup> )
Suite	111	1199
Balcony	139	1499
Total Area	250	2698

## 2BR - PENTHOUSE (A)



Level 9



Level 17

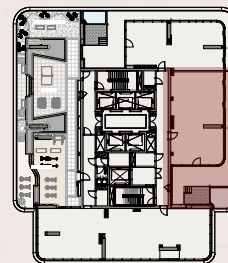




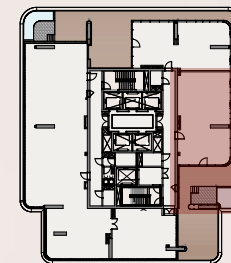
## Unit Plans

Name	Area (m <sup>2</sup> )	Area (ft <sup>2</sup> )
Suite	117	1263
Balcony	132	1427
Total Area	249	2690

## 2BR - PENTHOUSE (B)



Level 9



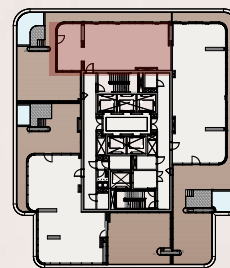
Level 17



## Unit Plans

Name	Area (m <sup>2</sup> )	Area (ft <sup>2</sup> )
Suite	124	1339
Balcony	123	1326
Total Area	247	2665

## 2BR - PENTHOUSE (A)



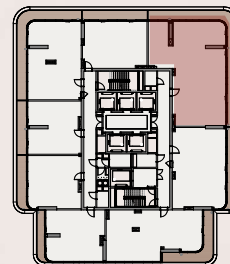
Level 25



## Unit Plans

Name	Area (m <sup>2</sup> )	Area (ft <sup>2</sup> )
Suite	157	1688
Balcony	43	467
Total Area	200	2155

### 3 BR TYPE A



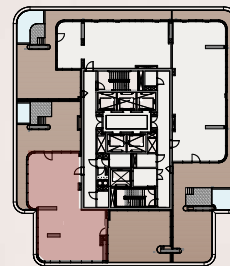
Level 19-24 & 27-31



## Unit Plans

Name	Area (m <sup>2</sup> )	Area (ft <sup>2</sup> )
Suite	154	1664
Balcony	166	1784
Total Area	320	3448

### 3BR - PENTHOUSE (A)



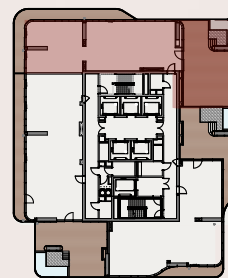
Level 25



## Unit Plans

Name	Area (m <sup>2</sup> )	Area (ft <sup>2</sup> )
Suite	158	1702
Balcony	131	1406
Total Area	289	3108

### 3BR - PENTHOUSE (B)



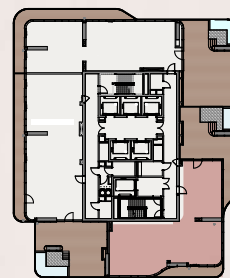
Level 10,18,26



## Unit Plans

Name	Area (m <sup>2</sup> )	Area (ft <sup>2</sup> )
Suite	171	1841
Balcony	86	921
Total Area	257	2762

## 3BR - PENTHOUSE (C)



Level 10,18,26

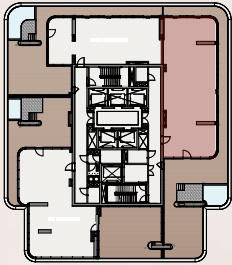




Unit Plans

Name	Area (m <sup>2</sup> )	Area (ft <sup>2</sup> )
Suite	175	1889
Balcony	162	1748
Total Area	337	3637

3BR - PENTHOUSE (D)



Level 25

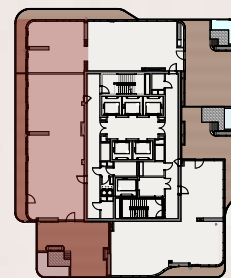




## Unit Plans

Name	Area (m <sup>2</sup> )	Area (ft <sup>2</sup> )
Suite	173	1859
Balcony	111	1197
Total Area	284	3056

### 3BR - PENTHOUSE (E)



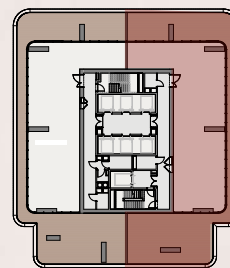
Level 10,18,26



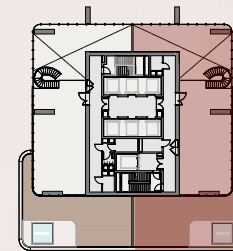
## Unit Plans

Name	Area (m <sup>2</sup> )	Area (ft <sup>2</sup> )
Suite	379	4083
Balcony	357	3846
Total Area	736	7929

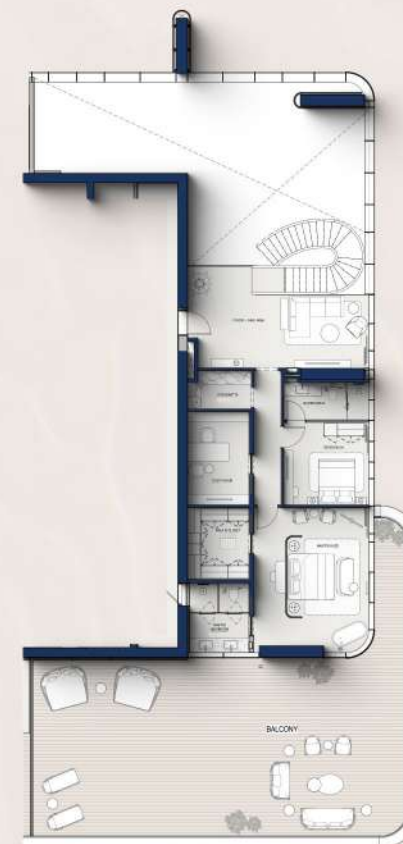
## 5 BR - PENTHOUSE (A)



Level 32



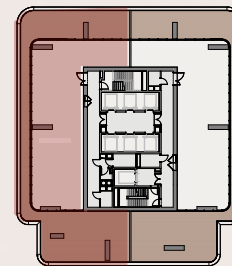
Level 33



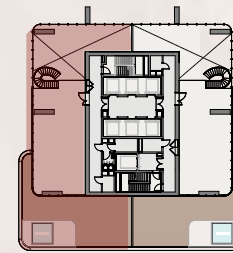
## Unit Plans

Name	Area (m <sup>2</sup> )	Area (ft <sup>2</sup> )
Suite	379	4083
Balcony	357	3846
Total Area	736	7929

## 5 BR - PENTHOUSE(B)



Level 32



Level 33





# PRESTIGE ONE

DEVELOPMENTS

*The Heart of Every Location*

[prestigeone.ae](https://prestigeone.ae)



800 PRESTIGE

The "Hilton" brand and "Hilton" trademarks (collectively, the "Trademarks") are owned by Hilton Worldwide Manage Limited, an affiliate of Hilton Worldwide Holdings Inc. ("Hilton"). The Trademarks may in the future be transferred to other affiliates of Hilton. The Residential Units are not owned, developed, or sold by Hilton and Hilton does not make any representations, warranties or guaranties whatsoever with respect to the Hilton Residences Dubai Maritime City. The Licensee uses the "Hilton" brand and certain of the Trademarks under a limited, non-exclusive, non-transferable licence from Hilton or its affiliate(s). The licence may be terminated or may expire without renewal, in which case the Hilton Residences Dubai Maritime City will not be identified as a "Hilton" branded project and the Licensee will not have any rights to use the Trademarks.