



*Balcony sizes vary

1 bedroom - Unit type A

| Area | Min | Max |
|----------------|---------------------------|---------------------------|
| Suite | 54.90 Sq.m / 590.94 Sq.ft | 55.15 Sq.m / 593.63 Sq.ft |
| Balcony | 4.19 Sq.m / 45.10 Sq.ft | 4.19 Sq.m / 45.10 Sq.ft |
| Total built-up | 59.09 Sq.m / 636.04 Sq.ft | 59.34 Sq.m / 638.73 Sq.ft |

Disclaimer

1. All room dimensions are in metric and measured to structural elements and exclude wall finishes and construction tolerances. 2. All dimensions have been provided by our consultant architects. 3. All materials, dimensions, drawings features and amenities are approximate at the time of printing. 4. Actual area may vary from stated area. Drawings not to scale E&OE. The developer reserves the right to make revisions to the floor plans and any features, materials, dimensions, drawings and amenities mentioned in this brochure without notice.

OLBIA



*Balcony sizes vary

1 bedroom - Unit type A1

| Area | Min | Max |
|----------------|---------------------------|---------------------------|
| Suite | 54.67 Sq.m / 588.46 Sq.ft | 55.26 Sq.m / 594.81 Sq.ft |
| Balcony | 4.19 Sq.m / 45.10 Sq.ft | 4.19 Sq.m / 45.10 Sq.ft |
| Total built-up | 58.86 Sq.m / 633.56 Sq.ft | 59.45 Sq.m / 639.91 Sq.ft |

Disclaimer

1. All room dimensions are in metric and measured to structural elements and exclude wall finishes and construction tolerances. 2. All dimensions have been provided by our consultant architects. 3. All materials, dimensions, drawings features and amenities are approximate at the time of printing. 4. Actual area may vary from stated area. Drawings not to scale E&OE. The developer reserves the right to make revisions to the floor plans and any features, materials, dimensions, drawings and amenities mentioned in this brochure without notice.

OLBIA



*Balcony sizes vary

1 bedroom - Unit type A2

| | |
|----------------|---------------------------|
| Suite | 54.84 Sq.m / 590.29 Sq.ft |
| Balcony | 4.26 Sq.m / 45.85 Sq.ft |
| Total built-up | 59.10 Sq.m / 636.15 Sq.ft |

OLBIA

Disclaimer

1. All room dimensions are in metric and measured to structural elements and exclude wall finishes and construction tolerances. 2. All dimensions have been provided by our consultant architects. 3. All materials, dimensions, drawings features and amenities are approximate at the time of printing. 4. Actual area may vary from stated area. Drawings not to scale E&OE. The developer reserves the right to make revisions to the floor plans and any features, materials, dimensions, drawings and amenities mentioned in this brochure without notice.



*Balcony sizes vary

1 bedroom - Unit type A3

| Area | Min | Max |
|----------------|---------------------------|---------------------------|
| Suite | 54.67 Sq.m / 588.46 Sq.ft | 55.09 Sq.m / 592.98 Sq.ft |
| Balcony | 16.74 Sq.m / 180.19 Sq.ft | 16.74 Sq.m / 180.19 Sq.ft |
| Total built-up | 71.41 Sq.m / 768.65 Sq.ft | 71.83 Sq.m / 773.17 Sq.ft |

Disclaimer

1. All room dimensions are in metric and measured to structural elements and exclude wall finishes and construction tolerances. 2. All dimensions have been provided by our consultant architects. 3. All materials, dimensions, drawings features and amenities are approximate at the time of printing. 4. Actual area may vary from stated area. Drawings not to scale E&OE. The developer reserves the right to make revisions to the floor plans and any features, materials, dimensions, drawings and amenities mentioned in this brochure without notice.

OLBIA



*Balcony sizes vary

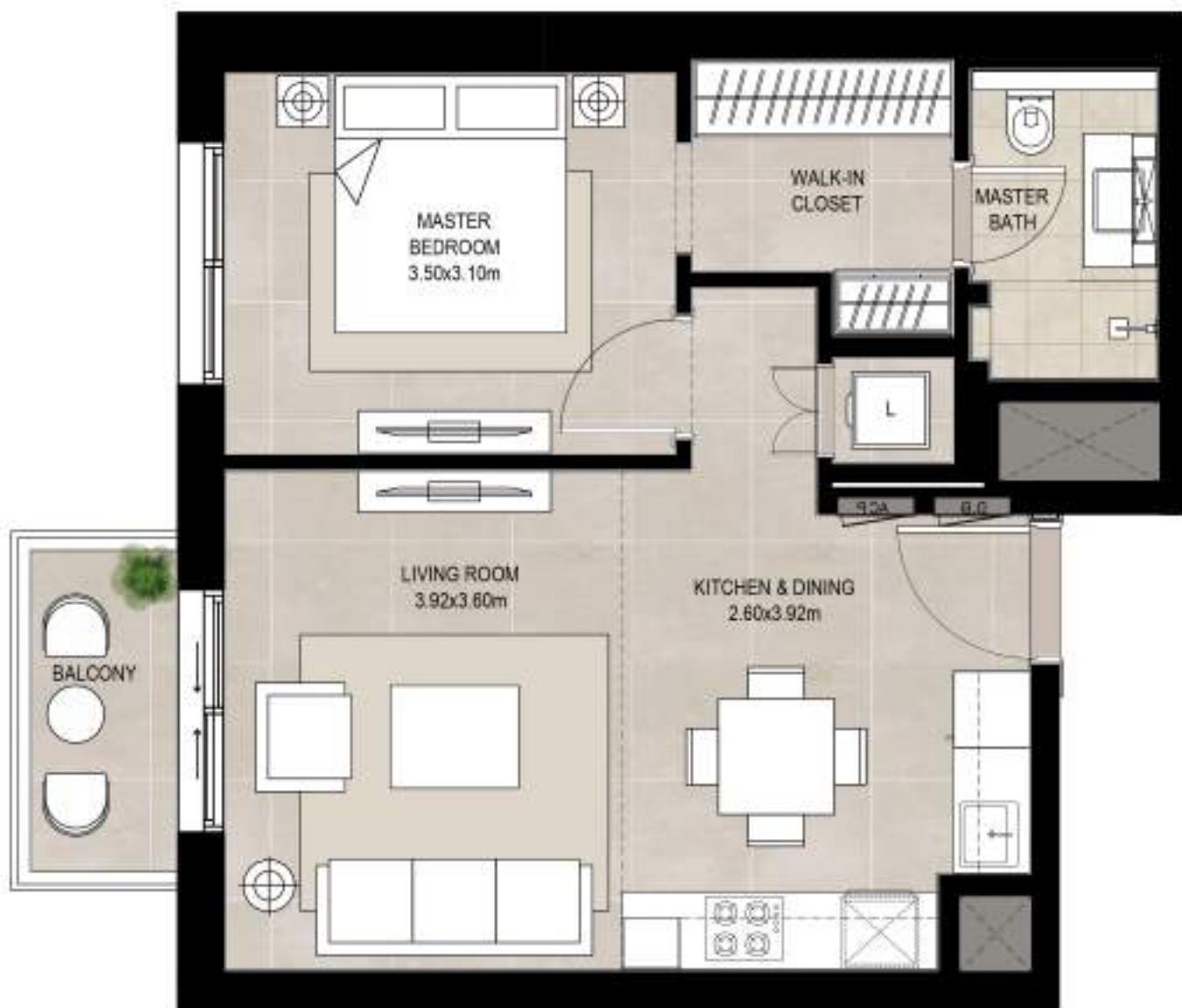
1 bedroom - Unit type A4

| Area | Min | Max |
|----------------|---------------------------|---------------------------|
| Suite | 54.82 Sq.m / 590.08 Sq.ft | 54.90 Sq.m / 590.94 Sq.ft |
| Balcony | 4.19 Sq.m / 45.10 Sq.ft | 17.08 Sq.m / 183.85 Sq.ft |
| Total built-up | 59.09 Sq.m / 636.04 Sq.ft | 71.90 Sq.m / 773.93 Sq.ft |

Disclaimer

1. All room dimensions are in metric and measured to structural elements and exclude wall finishes and construction tolerances. 2. All dimensions have been provided by our consultant architects. 3. All materials, dimensions, drawings features and amenities are approximate at the time of printing. 4. Actual area may vary from stated area. Drawings not to scale E&OE. The developer reserves the right to make revisions to the floor plans and any features, materials, dimensions, drawings and amenities mentioned in this brochure without notice.

OLBIA



*Balcony sizes vary

1 bedroom - Unit type B

| Area | Min | Max |
|----------------|---------------------------|---------------------------|
| Suite | 50.35 Sq.m / 541.96 Sq.ft | 50.36 Sq.m / 542.07 Sq.ft |
| Balcony | 4.19 Sq.m / 45.10 Sq.ft | 4.19 Sq.m / 45.10 Sq.ft |
| Total built-up | 54.54 Sq.m / 587.06 Sq.ft | 54.55 Sq.m / 587.17 Sq.ft |

Disclaimer

1. All room dimensions are in metric and measured to structural elements and exclude wall finishes and construction tolerances. 2. All dimensions have been provided by our consultant architects. 3. All materials, dimensions, drawings features and amenities are approximate at the time of printing. 4. Actual area may vary from stated area. Drawings not to scale E&OE. The developer reserves the right to make revisions to the floor plans and any features, materials, dimensions, drawings and amenities mentioned in this brochure without notice.

OLBIA



*Balcony sizes vary

1 bedroom - Unit type B (M)

| | |
|----------------|---------------------------|
| Suite | 50.63 Sq.m / 544.98 Sq.ft |
| Balcony | 4.19 Sq.m / 45.10 Sq.ft |
| Total built-up | 54.82 Sq.m / 590.08 Sq.ft |

Disclaimer

1. All room dimensions are in metric and measured to structural elements and exclude wall finishes and construction tolerances. 2. All dimensions have been provided by our consultant architects. 3. All materials, dimensions, drawings features and amenities are approximate at the time of printing. 4. Actual area may vary from stated area. Drawings not to scale E&OE. The developer reserves the right to make revisions to the floor plans and any features, materials, dimensions, drawings and amenities mentioned in this brochure without notice.

OLBIA



*Balcony sizes vary

1 bedroom - Unit type B1

| | |
|----------------|---------------------------|
| Suite | 50.36 Sq.m / 542.07 Sq.ft |
| Balcony | 15.72 Sq.m / 169.21 Sq.ft |
| Total built-up | 66.08 Sq.m / 711.28 Sq.ft |

Disclaimer

1. All room dimensions are in metric and measured to structural elements and exclude wall finishes and construction tolerances. 2. All dimensions have been provided by our consultant architects. 3. All materials, dimensions, drawings features and amenities are approximate at the time of printing. 4. Actual area may vary from stated area. Drawings not to scale E&OE. The developer reserves the right to make revisions to the floor plans and any features, materials, dimensions, drawings and amenities mentioned in this brochure without notice.

OLBIA



*Balcony sizes vary

1 bedroom - Unit type B1 (M)

| | |
|----------------|---------------------------|
| Suite | 50.63 Sq.m / 544.98 Sq.ft |
| Balcony | 15.02 Sq.m / 161.67 Sq.ft |
| Total built-up | 65.65 Sq.m / 706.65 Sq.ft |

Disclaimer

1. All room dimensions are in metric and measured to structural elements and exclude wall finishes and construction tolerances. 2. All dimensions have been provided by our consultant architects. 3. All materials, dimensions, drawings features and amenities are approximate at the time of printing. 4. Actual area may vary from stated area. Drawings not to scale E&OE. The developer reserves the right to make revisions to the floor plans and any features, materials, dimensions, drawings and amenities mentioned in this brochure without notice.



*Balcony sizes vary

2 bedroom - Unit type A

| | |
|----------------|---------------------------|
| Suite | 81.10 Sq.m / 872.95 Sq.ft |
| Balcony | 6.80 Sq.m / 73.19 Sq.ft |
| Total built-up | 87.90 Sq.m / 946.15 Sq.ft |

OLBIA

Disclaimer

1. All room dimensions are in metric and measured to structural elements and exclude wall finishes and construction tolerances. 2. All dimensions have been provided by our consultant architects. 3. All materials, dimensions, drawings features and amenities are approximate at the time of printing. 4. Actual area may vary from stated area. Drawings not to scale E&OE. The developer reserves the right to make revisions to the floor plans and any features, materials, dimensions, drawings and amenities mentioned in this brochure without notice.



*Balcony sizes vary

2 bedroom - Unit type A (M)

| Area | Min | Max |
|----------------|---------------------------|---------------------------|
| Suite | 80.54 Sq.m / 866.93 Sq.ft | 80.87 Sq.m / 870.48 Sq.ft |
| Balcony | 6.80 Sq.m / 73.19 Sq.ft | 8.23 Sq.m / 88.59 Sq.ft |
| Total built-up | 87.34 Sq.m / 940.12 Sq.ft | 89.10 Sq.m / 959.06 Sq.ft |

Disclaimer

1. All room dimensions are in metric and measured to structural elements and exclude wall finishes and construction tolerances. 2. All dimensions have been provided by our consultant architects. 3. All materials, dimensions, drawings features and amenities are approximate at the time of printing. 4. Actual area may vary from stated area. Drawings not to scale E&OE. The developer reserves the right to make revisions to the floor plans and any features, materials, dimensions, drawings and amenities mentioned in this brochure without notice.

OLBIA



2 bedroom - Unit type A1

| Area | Min | Max |
|----------------|---------------------------|------------------------------|
| Suite | 80.54 Sq.m / 866.93 Sq.ft | 80.87 Sq.m / 870.48 Sq.ft |
| Balcony | 6.80 Sq.m / 73.19 Sq.ft | 8.23 Sq.m / 88.59 Sq.ft 9.24 |
| Total built-up | 87.34 Sq.m / 940.12 Sq.ft | 89.10 Sq.m / 959.06 Sq.ft |

Disclaimer

1. All room dimensions are in metric and measured to structural elements and exclude wall finishes and construction tolerances. 2. All dimensions have been provided by our consultant architects. 3. All materials, dimensions, drawings features and amenities are approximate at the time of printing. 4. Actual area may vary from stated area. Drawings not to scale E&OE. The developer reserves the right to make revisions to the floor plans and any features, materials, dimensions, drawings and amenities mentioned in this brochure without notice.



2 bedroom - Unit type A1 (M)

| Area | Min | Max |
|----------------|---------------------------|---------------------------|
| Suite | 80.94 Sq.m / 871.23 Sq.ft | 81.19 Sq.m / 873.92 Sq.ft |
| Balcony | 7.59 Sq.m / 81.70 Sq.ft | 7.59 Sq.m / 81.70 Sq.ft |
| Total built-up | 88.53 Sq.m / 952.93 Sq.ft | 88.78 Sq.m / 955.62 Sq.ft |

Disclaimer

1. All room dimensions are in metric and measured to structural elements and exclude wall finishes and construction tolerances. 2. All dimensions have been provided by our consultant architects. 3. All materials, dimensions, drawings features and amenities are approximate at the time of printing. 4. Actual area may vary from stated area. Drawings not to scale E&OE. The developer reserves the right to make revisions to the floor plans and any features, materials, dimensions, drawings and amenities mentioned in this brochure without notice.



*Balcony sizes vary

2 bedroom - Unit type A2

| | |
|----------------|-----------------------------|
| Suite | 80.74 Sq.m / 869.08 Sq.ft |
| Balcony | 27.27 Sq.m / 293.53 Sq.ft |
| Total built-up | 108.01 Sq.m / 1162.61 Sq.ft |

Disclaimer

1. All room dimensions are in metric and measured to structural elements and exclude wall finishes and construction tolerances. 2. All dimensions have been provided by our consultant architects. 3. All materials, dimensions, drawings features and amenities are approximate at the time of printing. 4. Actual area may vary from stated area. Drawings not to scale E&OE. The developer reserves the right to make revisions to the floor plans and any features, materials, dimensions, drawings and amenities mentioned in this brochure without notice.

OLBIA



*Balcony sizes vary

2 bedroom - Unit type A3

| | |
|----------------|-----------------------------|
| Suite | 80.87 Sq.m / 870.48 Sq.ft |
| Balcony | 26.88 Sq.m / 289.33 Sq.ft |
| Total built-up | 107.75 Sq.m / 1159.81 Sq.ft |

OLBIA

Disclaimer

1. All room dimensions are in metric and measured to structural elements and exclude wall finishes and construction tolerances. 2. All dimensions have been provided by our consultant architects. 3. All materials, dimensions, drawings features and amenities are approximate at the time of printing. 4. Actual area may vary from stated area. Drawings not to scale E&OE. The developer reserves the right to make revisions to the floor plans and any features, materials, dimensions, drawings and amenities mentioned in this brochure without notice.



*Balcony sizes vary

2 bedroom - Unit type A4

| | |
|----------------|-----------------------------|
| Suite | 80.94 Sq.m / 871.23 Sq.ft |
| Balcony | 26.84 Sq.m / 288.90 Sq.ft |
| Total built-up | 107.78 Sq.m / 1160.13 Sq.ft |

Disclaimer

1. All room dimensions are in metric and measured to structural elements and exclude wall finishes and construction tolerances. 2. All dimensions have been provided by our consultant architects. 3. All materials, dimensions, drawings features and amenities are approximate at the time of printing. 4. Actual area may vary from stated area. Drawings not to scale E&OE. The developer reserves the right to make revisions to the floor plans and any features, materials, dimensions, drawings and amenities mentioned in this brochure without notice.

OLBIA



*Balcony sizes vary

2 bedroom - Unit type B

| | |
|----------------|---------------------------|
| Suite | 73.95 Sq.m / 795.99 Sq.ft |
| Balcony | 11.14 Sq.m / 119.91 Sq.ft |
| Total built-up | 85.09 Sq.m / 915.90 Sq.ft |

Disclaimer

1. All room dimensions are in metric and measured to structural elements and exclude wall finishes and construction tolerances. 2. All dimensions have been provided by our consultant architects. 3. All materials, dimensions, drawings features and amenities are approximate at the time of printing. 4. Actual area may vary from stated area. Drawings not to scale E&OE. The developer reserves the right to make revisions to the floor plans and any features, materials, dimensions, drawings and amenities mentioned in this brochure without notice.

OLBIA



*Balcony sizes vary

2 bedroom - Unit type B1

| | |
|----------------|-----------------------------|
| Suite | 73.97 Sq.m / 796.21 Sq.ft |
| Balcony | 31.46 Sq.m / 338.63 Sq.ft |
| Total built-up | 105.43 Sq.m / 1134.84 Sq.ft |

Disclaimer

1. All room dimensions are in metric and measured to structural elements and exclude wall finishes and construction tolerances. 2. All dimensions have been provided by our consultant architects. 3. All materials, dimensions, drawings features and amenities are approximate at the time of printing. 4. Actual area may vary from stated area. Drawings not to scale E&OE. The developer reserves the right to make revisions to the floor plans and any features, materials, dimensions, drawings and amenities mentioned in this brochure without notice.

OLBIA



*Balcony sizes vary

2 bedroom - Unit type C

| | |
|----------------|----------------------------|
| Suite | 88.74 Sq.m / 955.19 Sq.ft |
| Balcony | 6.14 Sq.m / 66.09 Sq.ft |
| Total built-up | 94.88 Sq.m / 1021.28 Sq.ft |

Disclaimer

1. All room dimensions are in metric and measured to structural elements and exclude wall finishes and construction tolerances. 2. All dimensions have been provided by our consultant architects. 3. All materials, dimensions, drawings features and amenities are approximate at the time of printing. 4. Actual area may vary from stated area. Drawings not to scale E&OE. The developer reserves the right to make revisions to the floor plans and any features, materials, dimensions, drawings and amenities mentioned in this brochure without notice.

OLBIA



*Balcony sizes vary

2 bedroom - Unit type C1

| | |
|----------------|----------------------------|
| Suite | 88.80 Sq.m / 955.84 Sq.ft |
| Balcony | 7.54 Sq.m / 81.16 Sq.ft |
| Total built-up | 96.34 Sq.m / 1037.00 Sq.ft |

Disclaimer

1. All room dimensions are in metric and measured to structural elements and exclude wall finishes and construction tolerances. 2. All dimensions have been provided by our consultant architects. 3. All materials, dimensions, drawings features and amenities are approximate at the time of printing. 4. Actual area may vary from stated area. Drawings not to scale E&OE. The developer reserves the right to make revisions to the floor plans and any features, materials, dimensions, drawings and amenities mentioned in this brochure without notice.

OLBIA



*Balcony sizes vary

2 bedroom - Unit type C2

| | |
|----------------|----------------------------|
| Suite | 88.72 Sq.m / 954.97 Sq.ft |
| Balcony | 6.16 Sq.m / 66.31 Sq.ft |
| Total built-up | 94.88 Sq.m / 1021.28 Sq.ft |

Disclaimer

1. All room dimensions are in metric and measured to structural elements and exclude wall finishes and construction tolerances. 2. All dimensions have been provided by our consultant architects. 3. All materials, dimensions, drawings features and amenities are approximate at the time of printing. 4. Actual area may vary from stated area. Drawings not to scale E&OE. The developer reserves the right to make revisions to the floor plans and any features, materials, dimensions, drawings and amenities mentioned in this brochure without notice.

OLBIA



*Balcony sizes vary

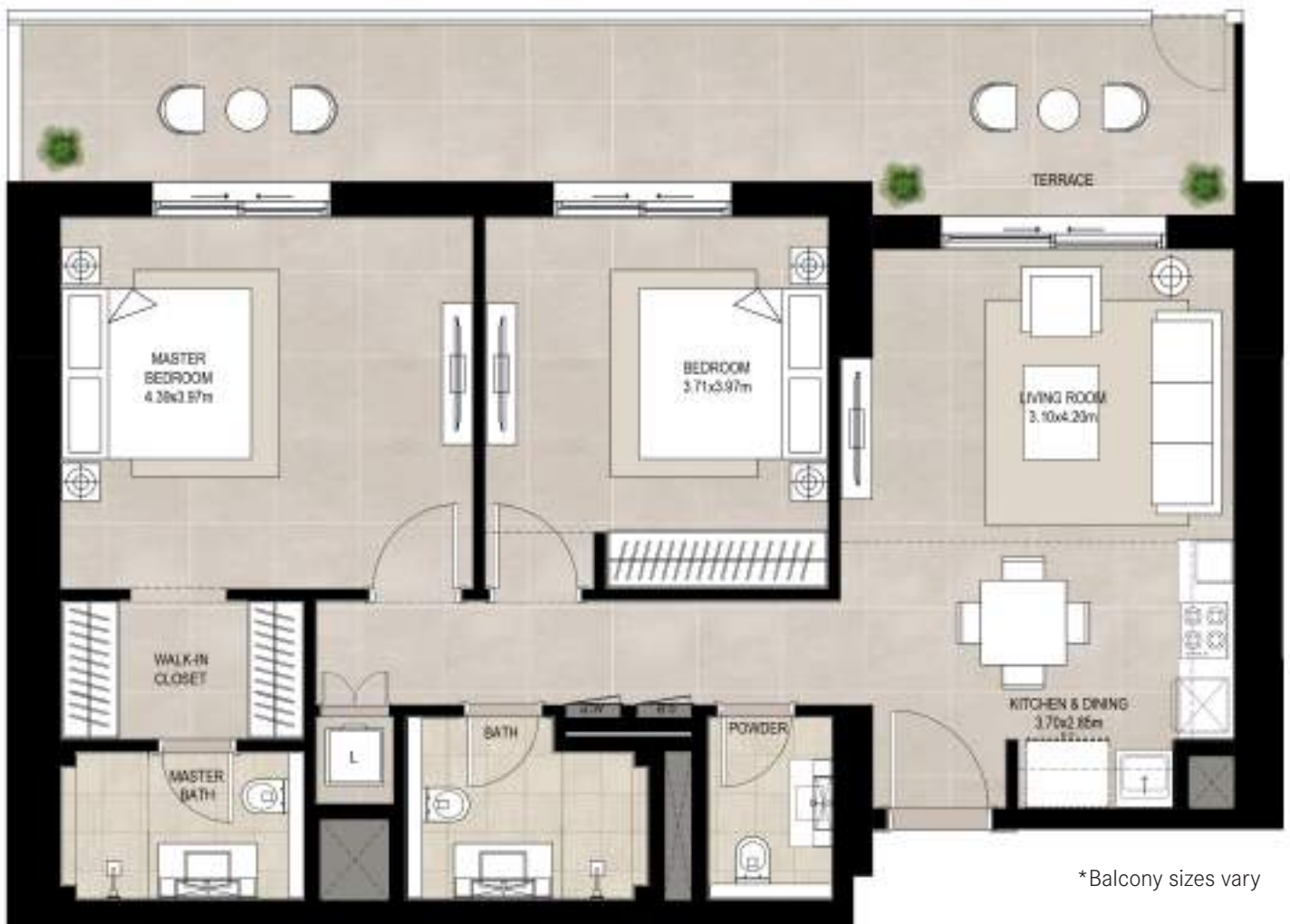
2 bedroom - Unit type C3

| | |
|----------------|-----------------------------|
| Suite | 88.59 Sq.m / 953.57 Sq.ft |
| Balcony | 27.76 Sq.m / 298.81 Sq.ft |
| Total built-up | 116.35 Sq.m / 1252.38 Sq.ft |

Disclaimer

1. All room dimensions are in metric and measured to structural elements and exclude wall finishes and construction tolerances. 2. All dimensions have been provided by our consultant architects. 3. All materials, dimensions, drawings features and amenities are approximate at the time of printing. 4. Actual area may vary from stated area. Drawings not to scale E&OE. The developer reserves the right to make revisions to the floor plans and any features, materials, dimensions, drawings and amenities mentioned in this brochure without notice.

OLBIA



2 bedroom - Unit type C4

| | |
|----------------|-----------------------------|
| Suite | 88.79 Sq.m / 955.73 Sq.ft |
| Balcony | 26.80 Sq.m / 288.47 Sq.ft |
| Total built-up | 115.59 Sq.m / 1244.20 Sq.ft |

Disclaimer

1. All room dimensions are in metric and measured to structural elements and exclude wall finishes and construction tolerances. 2. All dimensions have been provided by our consultant architects. 3. All materials, dimensions, drawings features and amenities are approximate at the time of printing. 4. Actual area may vary from stated area. Drawings not to scale E&OE. The developer reserves the right to make revisions to the floor plans and any features, materials, dimensions, drawings and amenities mentioned in this brochure without notice.

OLBIA



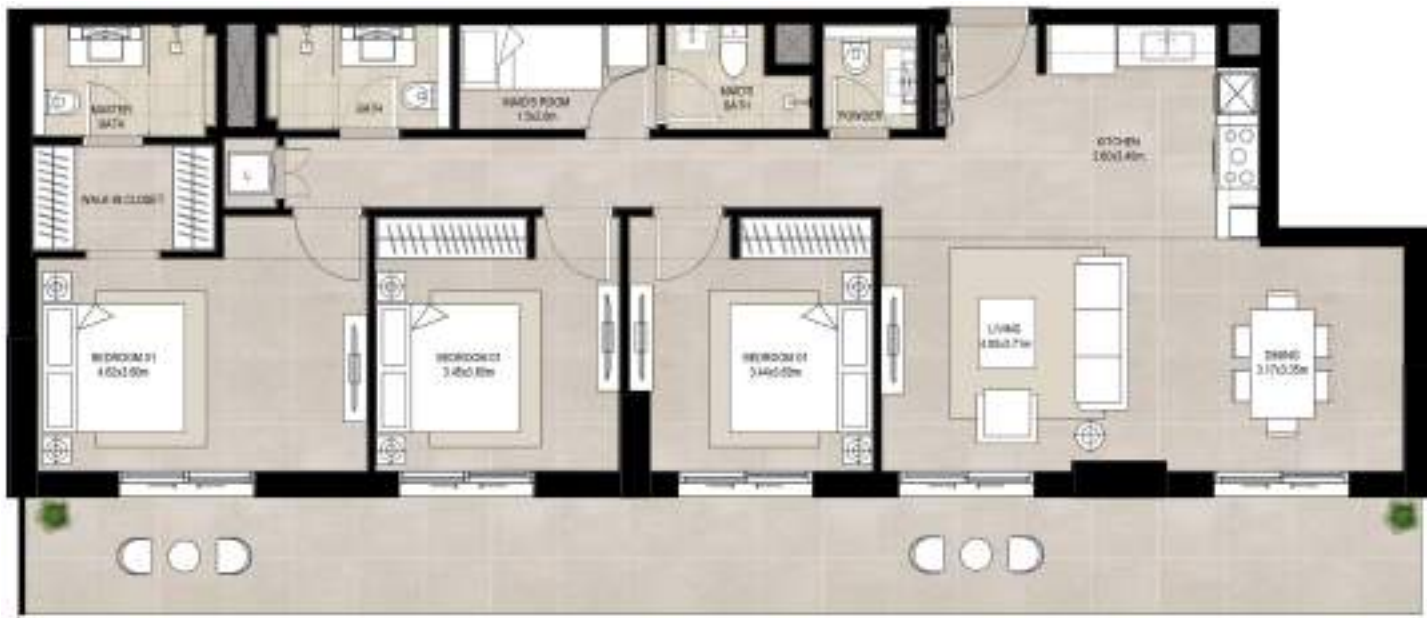
*Balcony sizes vary

3 bedroom - Unit type A

| | |
|----------------|-----------------------------|
| Suite | 119.73 Sq.m / 1288.76 Sq.ft |
| Balcony | 10.41 Sq.m / 112.05 Sq.ft |
| Total built-up | 130.14 Sq.m / 1400.82 Sq.ft |

Disclaimer

1. All room dimensions are in metric and measured to structural elements and exclude wall finishes and construction tolerances. 2. All dimensions have been provided by our consultant architects. 3. All materials, dimensions, drawings features and amenities are approximate at the time of printing. 4. Actual area may vary from stated area. Drawings not to scale E&OE. The developer reserves the right to make revisions to the floor plans and any features, materials, dimensions, drawings and amenities mentioned in this brochure without notice.



*Balcony sizes vary

3 bedroom - Unit type A1

| | |
|----------------|-----------------------------|
| Suite | 119.75 Sq.m / 1288.98 Sq.ft |
| Balcony | 38.57 Sq.m / 415.16 Sq.ft |
| Total built-up | 158.32 Sq.m / 1704.14 Sq.ft |

Disclaimer

1. All room dimensions are in metric and measured to structural elements and exclude wall finishes and construction tolerances. 2. All dimensions have been provided by our consultant architects. 3. All materials, dimensions, drawings features and amenities are approximate at the time of printing. 4. Actual area may vary from stated area. Drawings not to scale E&OE. The developer reserves the right to make revisions to the floor plans and any features, materials, dimensions, drawings and amenities mentioned in this brochure without notice.

OLBIA

GROUND FLOOR



FIRST FLOOR



*Balcony sizes vary

3 bedroom duplex - Unit type A

| Area | Min | Max |
|----------------|-----------------------------|-----------------------------|
| Suite | 163.43 Sq.m / 1759.15 Sq.ft | 163.48 Sq.m / 1759.68 Sq.ft |
| Balcony | 38.57 Sq.m / 415.16 Sq.ft | 38.66 Sq.m / 416.13 Sq.ft |
| Total built-up | 202.05 Sq.m / 2174.85 Sq.ft | 202.09 Sq.m / 2175.28 Sq.ft |

Disclaimer

1. All room dimensions are in metric and measured to structural elements and exclude wall finishes and construction tolerances. 2. All dimensions have been provided by our consultant architects. 3. All materials, dimensions, drawings features and amenities are approximate at the time of printing. 4. Actual area may vary from stated area. Drawings not to scale E&OE. The developer reserves the right to make revisions to the floor plans and any features, materials, dimensions, drawings and amenities mentioned in this brochure without notice.

GROUND FLOOR



FIRST FLOOR



*Balcony sizes vary

3 bedroom duplex - Unit type A (M)

| | |
|----------------|-----------------------------|
| Suite | 163.46 Sq.m / 1759.47 Sq.ft |
| Balcony | 38.64 Sq.m / 415.92 Sq.ft |
| Total built-up | 202.10 Sq.m / 2175.39 Sq.ft |

Disclaimer

1. All room dimensions are in metric and measured to structural elements and exclude wall finishes and construction tolerances. 2. All dimensions have been provided by our consultant architects. 3. All materials, dimensions, drawings features and amenities are approximate at the time of printing. 4. Actual area may vary from stated area. Drawings not to scale E&OE. The developer reserves the right to make revisions to the floor plans and any features, materials, dimensions, drawings and amenities mentioned in this brochure without notice.