

ONE RIVER POINT

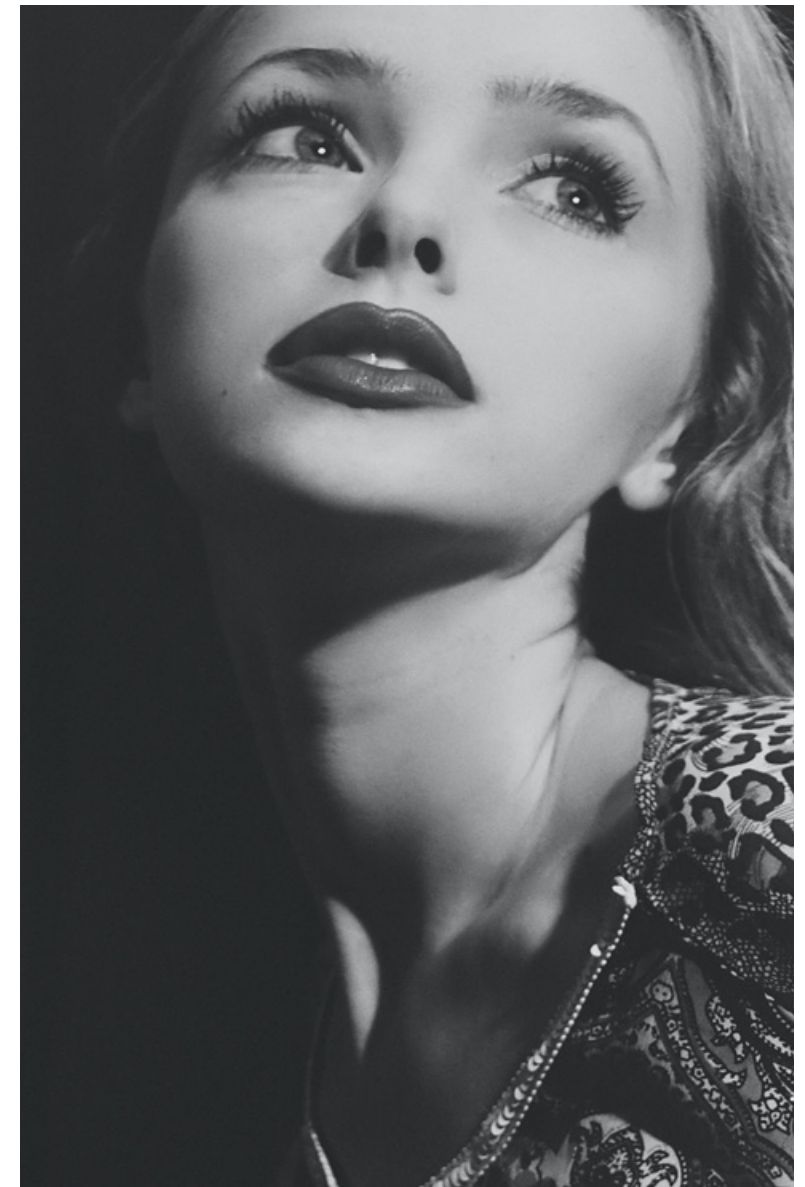


BUSINESS BAY

ONE RIVER POINT

Crafted and curated with the design connoisseur in mind, One River Point is Ellington's latest arrival in Business Bay. Located on the southwest side, its vast triangular plot faces Dubai Water Canal to the north. In addition to a wealth of sumptuous amenities, the building offers studios, one, two, and three bedroom apartments, as well as duplexes and penthouse suites.

The atmosphere inside is soft, contemporary, and welcoming, with low lighting that emulates a calm return from the vitality that keeps Business Bay one of Dubai's most eclectic and inspiring locations.



BUSINESS BAY'S MOST
ECLECTIC LIFESTYLE





ELLINGTON | DUTCO

Ellington Properties and Dutco are bringing together a wealth of experience and expertise in the development of One River Point.

Combining Ellington's resident-first philosophy with the attention to detail and efficiency for which Dutco is renowned, we can achieve perfection with speed. Our partnership marks a new era of growth for Ellington, and the rapid expansion of Dubai.



THE RHYTHM OF THE CITY

Business Bay has long held a reputation for being home to a vibrant community of innovation and aspiration. It has since attracted a wealth of exciting venues for dining, art culture, and socialising.

With its canalside spaces, collection of fitness amenities, and, of course, close connection to Downtown Dubai, residents of One River Point take full advantage of Dubai's wealth of opportunities.



CANALSIDE COSMOPOLITAN
WITH DUBAI WATER CANAL VIEWS



Dubai Water Canal Boardwalk	1 minute
Dubai Waterfall	2 minutes
Business Bay Metro Station Business Bay Marina Al Quoz Pond Park	5 minutes
Burj Khalifa Dubai Mall	7 minutes
Museum of The Future	8 minutes
Dubai International Financial Centre City Walk Meydan Racecourse	10 minutes
Mall of the Emirates	13 minutes
Dubai Design District Dubai Festival City Kite Beach	15 minutes
Burj Al Arab	17 minutes
Palm Jumeirah	19 minutes
Emirates Golf Club Dubai International Airport	20 minutes
Al Maktoum International Airport	39 minutes

DRIVING DISTANCES





MAKE AN ENTRANCE

Returning home via one of the area's cycle routes, by car, or via taxi using the hotel-style drop-off area with concierge service, the entrance lobby at One River Point is always a warm welcome. A bright and active space, the lobby is centred on beautiful marble flooring.







SOPHISTICATION
WITH AN EDGE

WHERE STYLE MEETS CHARACTER

Refined in its detailing and expressive in its tone, One River Point creates the warmth of home and amplifies modern life at its most beautiful.

Contemporary aesthetics, cutting-edge technology, and a prime location connect residents to a lifestyle that crosses paths, creates opportunities, and revitalises wellbeing. The entire building, inside and out is created to help its residents flourish in their new home.

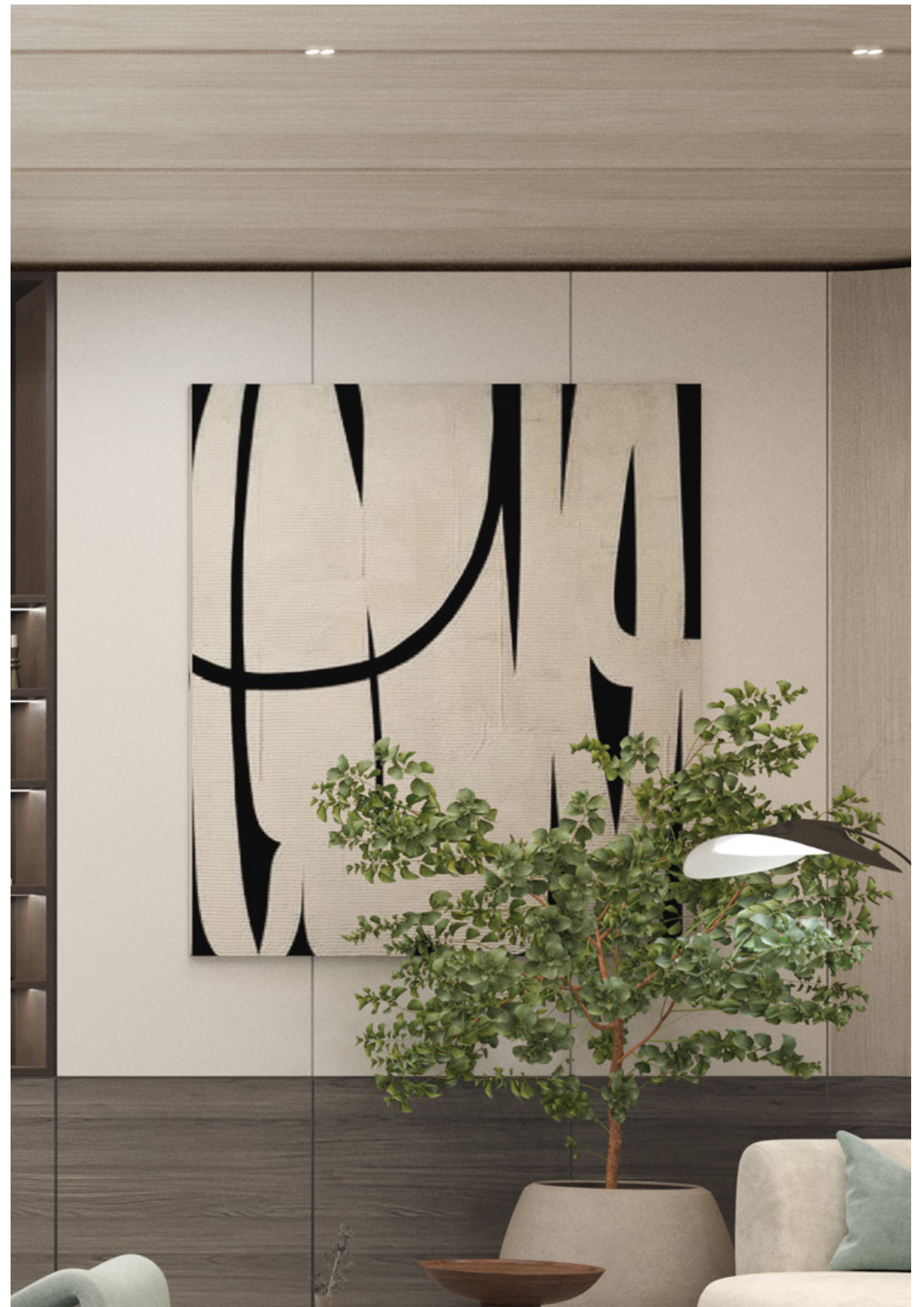
The presence of local artists adds to this positive influence, with their works on display throughout the corridors.



SEAMLESS FLOW

With sparkling canals on either side, the podium marks the base of One River Point, the triangular structure from which the property gets its name.

The podium marks a confidence that means to go on, housing a pool and decking area on its roof before the tower extends upwards in exquisite architectural layers.





THE RIVER CLUB

Balanced on the outermost point of The Podium, the pool deck at One River Point provides a shaded terrace, family and adult infinity pools, BBQ areas and sun-loungers.

It is the ideal place for watching the sun go down over the canal, elevated, sophisticated and relaxing, The River Club is already set to be a favourite of One River Point residents.



FLOW AND DYNAMISM





THE CLUBHOUSE

A refined interiors palette invites you to a sophisticated shared space. Formal yet dynamic, the Clubhouse sits on the upper floor of The Podium, overlooking the swimming pool through large glass doors.

Opening into an elegant lounge space, with sumptuous furnishings, co-working spaces, a coffee station and pantry, it is an ideal meeting spot to inspire your next idea.



KID'S PLAY AREAS

Children at One River Point are encouraged to learn, play and explore among the property's dynamic spaces. Indoors, children have access to interactive toys and games, as well as children's furniture, bathrooms and baby change.

The Podium features a playground equipped with soft features and high-end play equipment, and, for poolside fun, there is a dedicated kids' splash play area for endless entertainment.



INDOOR AND OUTDOOR
ADVENTURES





IMMERSIVE ROOM

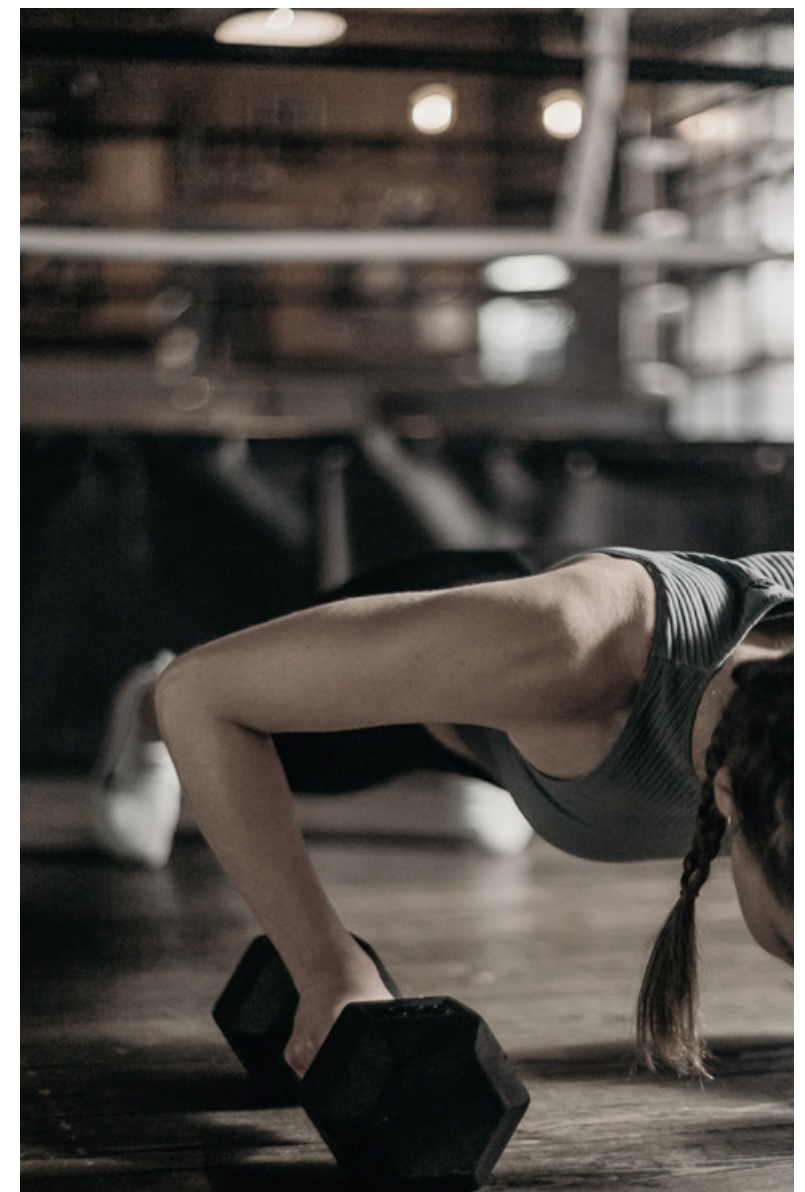
Enter a zone of contemplation and find a moment away from your busy life. In this unique experience at One River Point, residents can immerse themselves in a portal-like experience. The room instils a calming presence straight away, as you lie on one of the day beds strategically placed around the room, a multi-projector display fills the space with beautiful patterns and textures.



FITNESS CENTER

Designed to help One River Point residents achieve balance, the fitness centre creates space for workouts, stretches and mindfulness practices. The layout is professionally certified and equipped with high-end equipment, a climbing net, as well as spa-like showers and changing rooms.

There is also an interactive yoga screen and studio overlooking the pool terrace.



VITALITY THROUGH DESIGN





YOGA STUDIO

The yoga studio serves as a haven for well-being, with a thoughtful design that aims to foster a deeper connection between the body, mind, and the natural beauty outside its windows. The ambiance is intentionally calming, with a focus on the mesmerizing canal views.

To boost both functionality and visual appeal, sturdy wooden flooring provides a stable and comfortable foundation for yoga practice, ensuring a secure experience for everyone. Additionally, a cutting-edge virtual trainer is projected onto the wall, guiding participants through their yoga sessions with expert guidance and precision.



THE RESIDENCES

One River Point is tailored to a range of lifestyles, offering a beautifully designed collection of studios, apartments, four-bedroom duplexes, and decadent penthouses with private swimming pools. While different in their character, every home at One River Point encapsulates style and quality, down to the last detail.



DESIGNED WITH
PERSONALITY





LIVING SPACES

Clean design and contemporary floor plans create a playful dynamic between floods of natural light and shadow. This interplay is the result of expansive windows softening darker tones and illuminating the space. High ceilings and expansive balconies draw on this interplay, bringing about a unique yet sophisticated personality in every home.



THE KITCHENS

Floor-to-ceiling windows allow natural light to fill the modern kitchens of One River Point. Contrasting with the black accents and elevating the neutral colour palette, the light brings out an edge of sophistication surrounding the ingenious storage solutions, appliances, and integrated spaces. At the centre, a grand kitchen island draws the family to a space for enjoying quality time together, over food, social occasions, and coffee.

Specifically selected for 3-bedroom apartments, Duplexes and Penthouses, are a bespoke collection of extra kitchen appliances. This includes an integrated waterfall drop-in sink, in a sleek and contemporary gunmetal grey, featuring rainfall and pull-out faucets, a cup washer, drain control, chopping board, and drain basket. Additionally, our most exclusive kitchens will feature an integrated energy-efficient Teka Downdraft Hood Slider with touch control settings and charcoal filter.



IMBUED WITH
THE WARMTH OF HOME



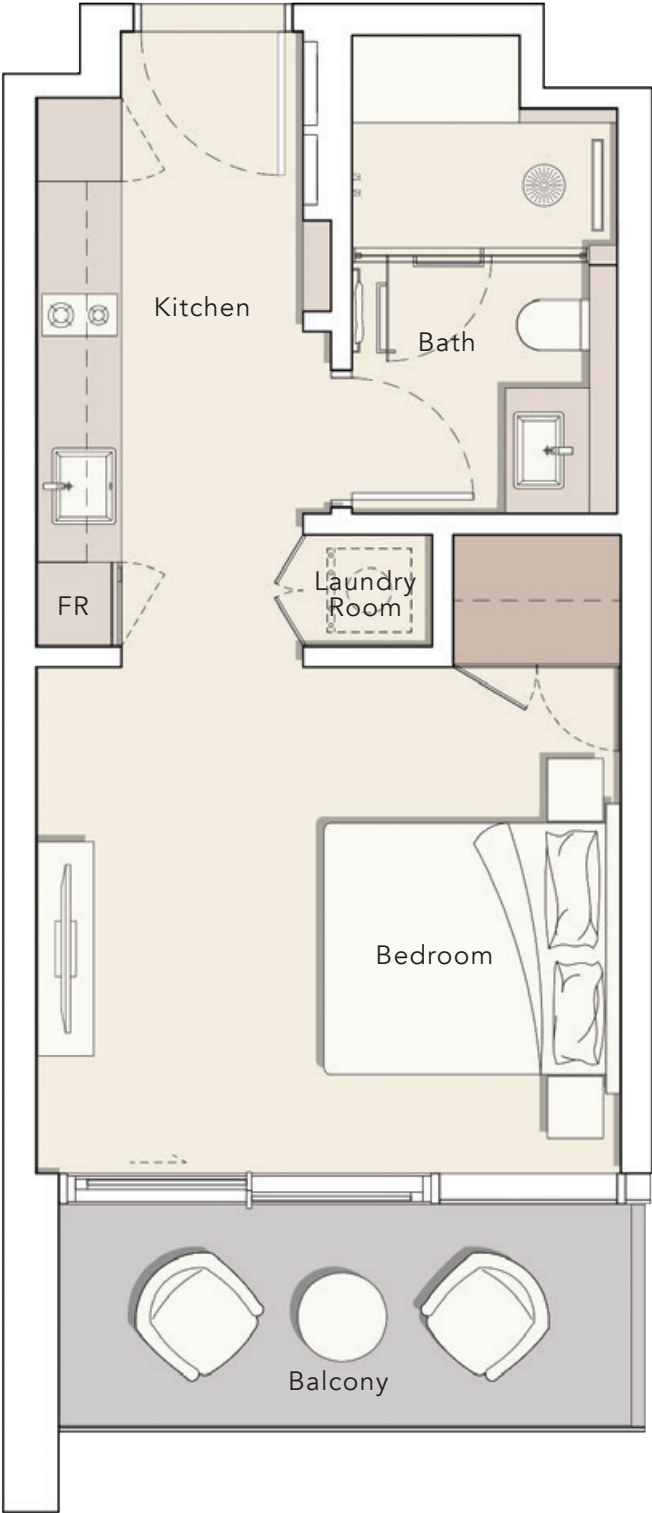


BATHROOMS & POWDER ROOMS

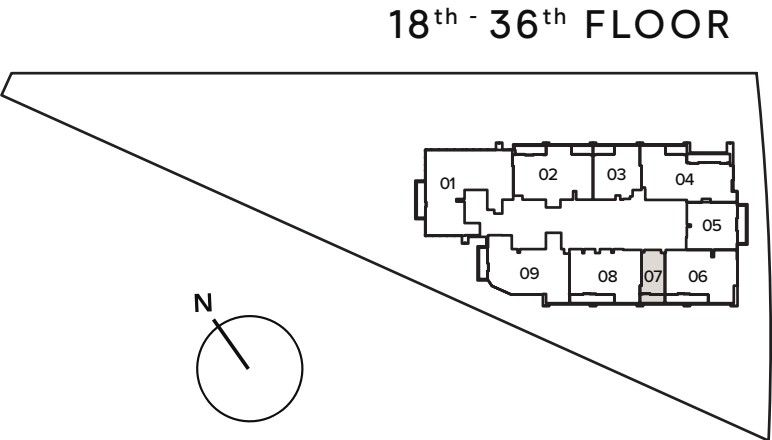
Fresh and functional, with warm finishes and intricately applied detailing set the scene for self-care and relaxing cleansing rituals. While, behind the scenes, subtle ambient lighting, ample hidden storage, and a generous rain shower allow for seamless daily routines.

FLOOR PLANS

STUDIO
TYPE A



Internal Living Area : 401.06 Sq. Ft
Outdoor Living Area : 86.43 Sq. Ft
Total Living Area : 487.50 Sq. Ft



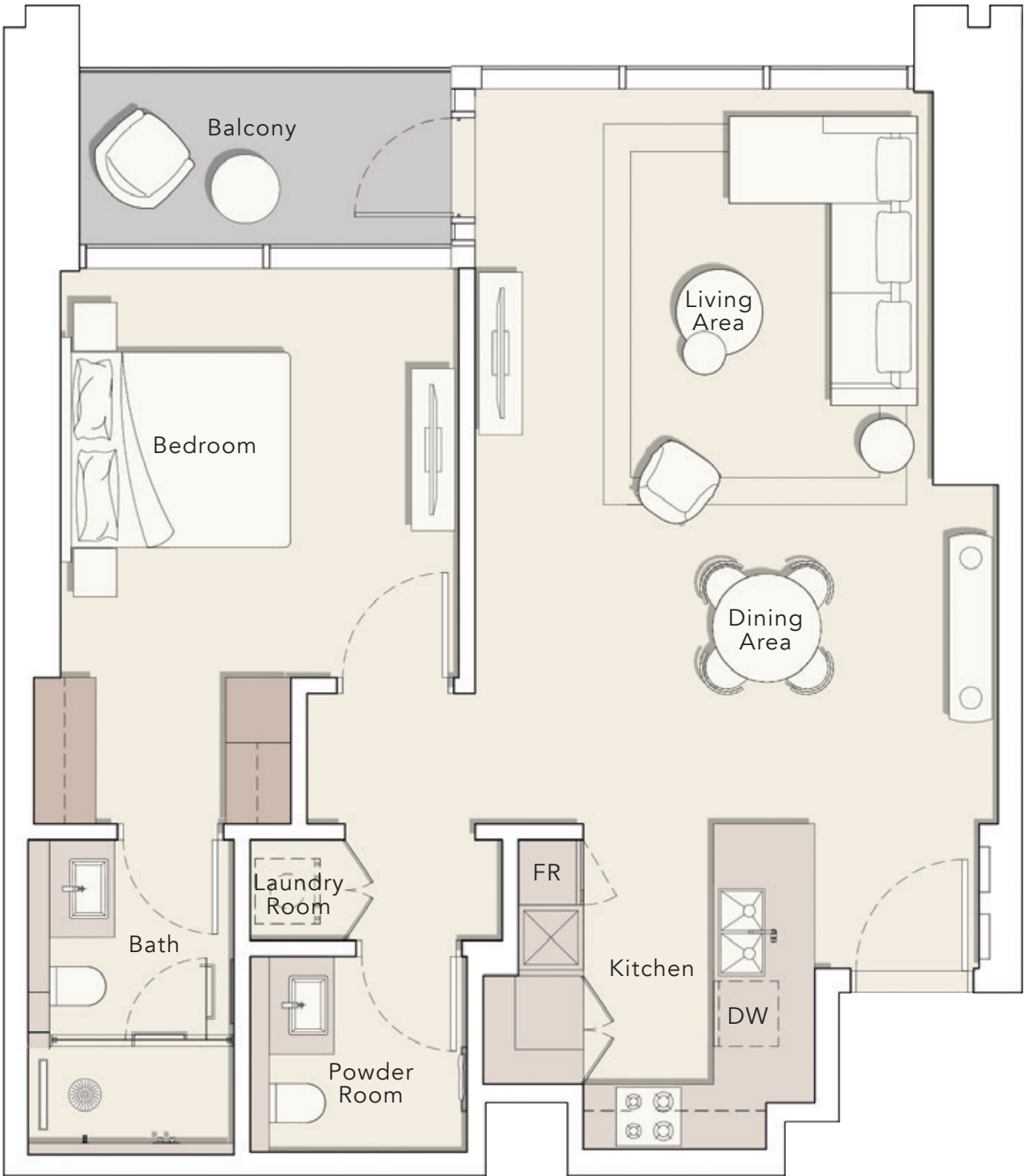
1 B E D R O O M

T Y P E A

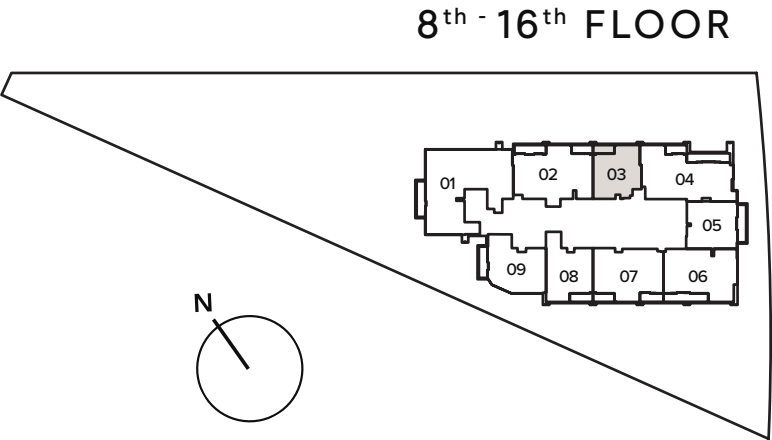
Internal Living Area : 886.41 Sq. Ft

Outdoor Living Area : 71.69 Sq. Ft

Total Living Area : 958.10 Sq. Ft



3rd FLOOR	7th FLOOR
301	701
4th FLOOR	8th - 16th FLOOR
401	803
5th FLOOR	18th - 36th FLOOR
501	1803
6th FLOOR	
601	



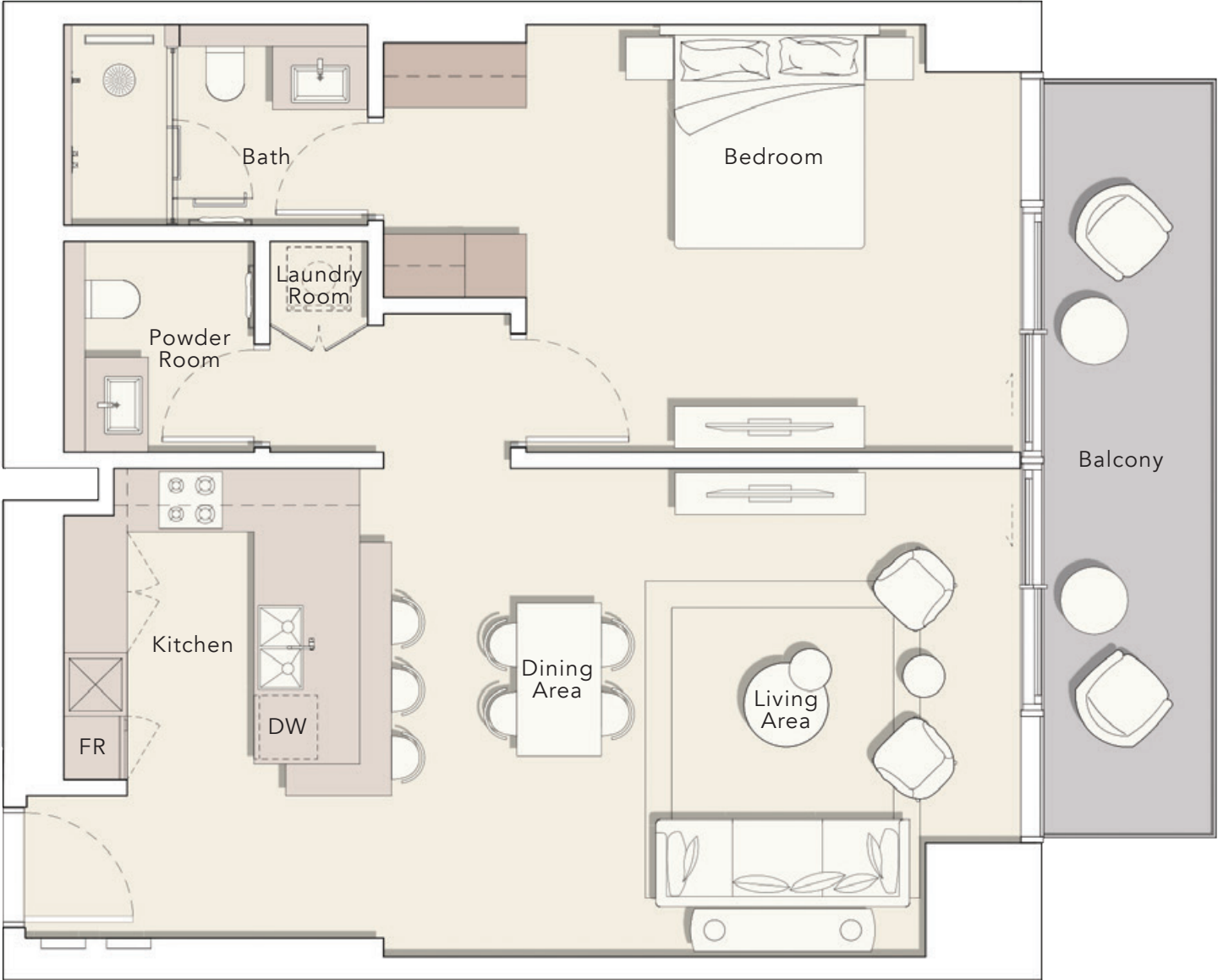
1 B E D R O O M

T Y P E B

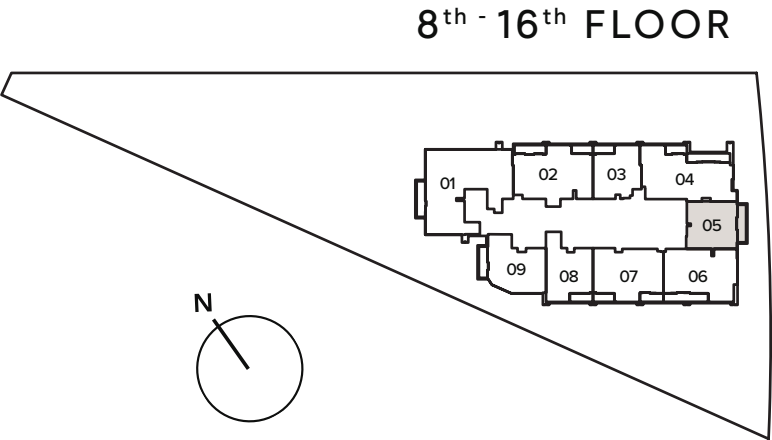
Internal Living Area : 930.43 Sq. Ft

Outdoor Living Area : 129.81 Sq. Ft

Total Living Area : 1060.25 Sq. Ft



3rd FLOOR	7th FLOOR
303	703
4th FLOOR	8th - 16th FLOOR
403	805
5th FLOOR	18th - 36th FLOOR
503	1805
6th FLOOR	
603	



1 B E D R O O M

T Y P E C

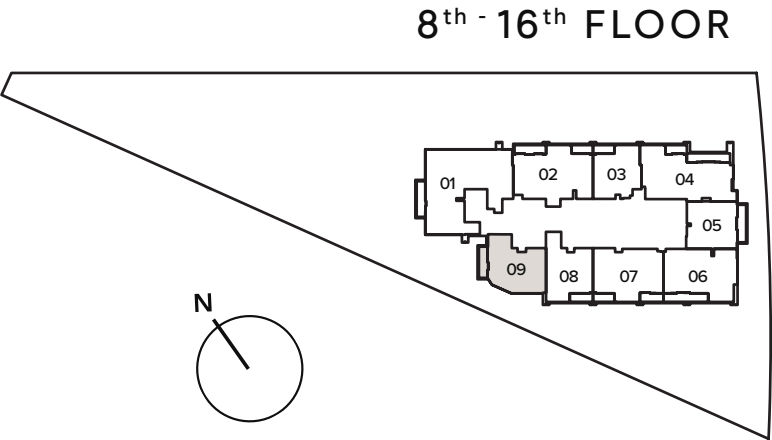


Internal Living Area : 1090.49 Sq. Ft

Outdoor Living Area : 107.10 Sq. Ft

Total Living Area : 1197.59 Sq. Ft

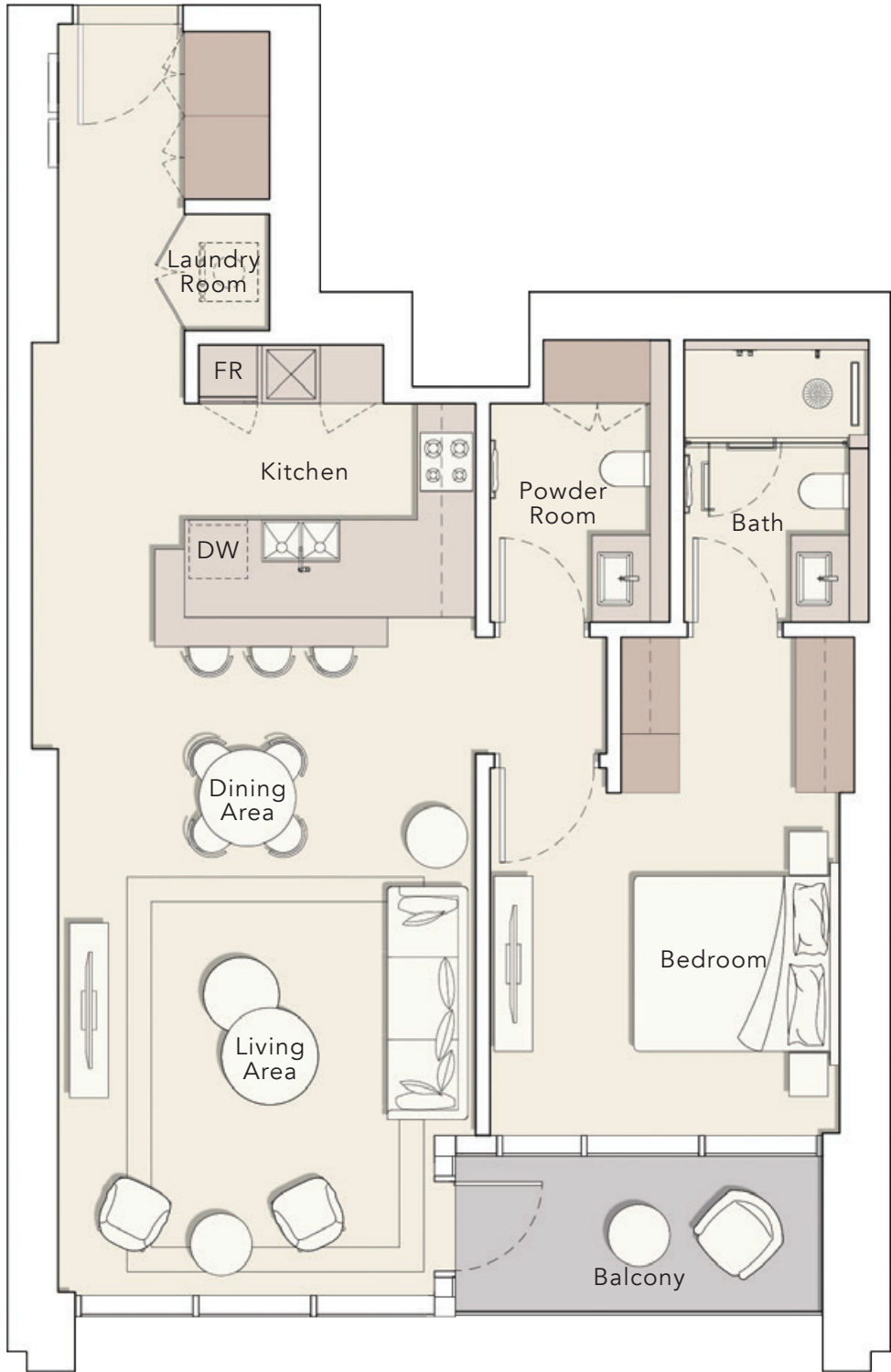
3 rd FLOOR	7 th FLOOR
307	707
4 th FLOOR	8 th - 16 th FLOOR
407	809
5 th FLOOR	
507	
6 th FLOOR	
607	



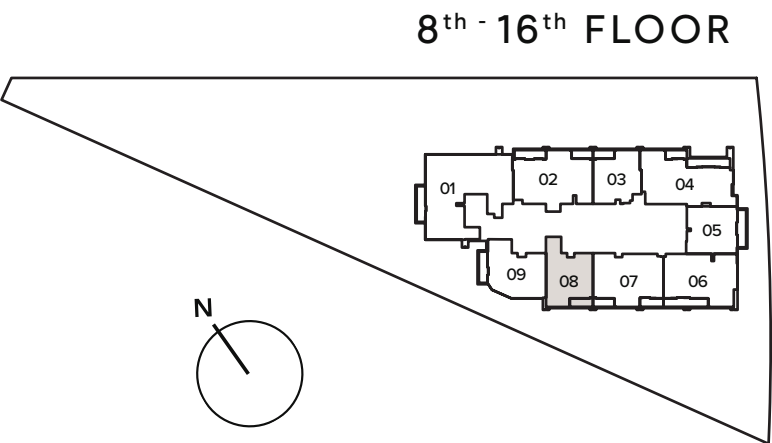
1 BEDROOM

TYPE D

Internal Living Area : 991.03 Sq. Ft
Outdoor Living Area : 77.82 Sq. Ft
Total Living Area : 1068.86 Sq. Ft



3rd FLOOR 306	7th FLOOR 706
4th FLOOR 406	8th - 16th FLOOR 808
5th FLOOR 506	
6th FLOOR 606	



2 B E D R O O M
T Y P E A

Internal Living Area : 1337.31 Sq. Ft
Outdoor Living Area : 152.63 Sq. Ft
Total Living Area : 1489.94 Sq. Ft



3rd FLOOR
304

4th FLOOR
404

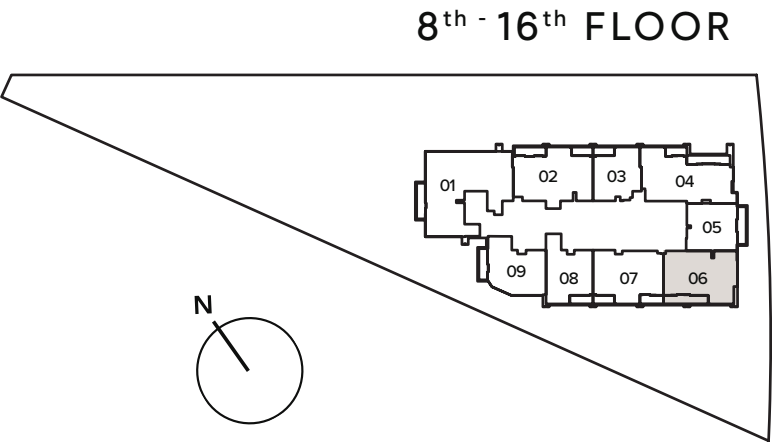
5th FLOOR
504

6th FLOOR
604

7th FLOOR
704

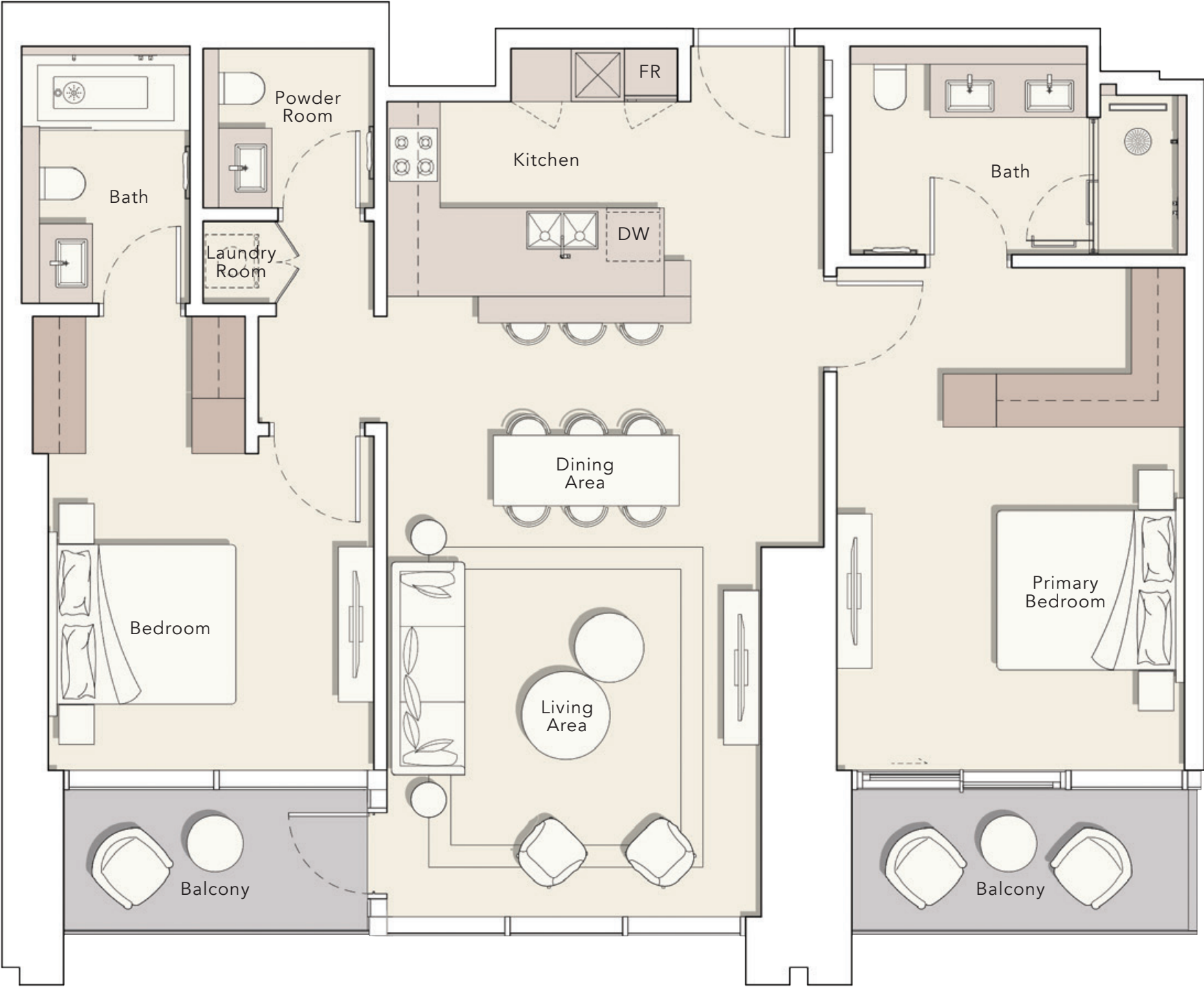
8th - 16th FLOOR
806

18th - 36th FLOOR
1806



2 BEDROOM
TYPE B

Internal Living Area : 1295.22 Sq. Ft
Outdoor Living Area : 152.63 Sq. Ft
Total Living Area : 1447.85 Sq. Ft



3rd FLOOR
305

7th FLOOR
705

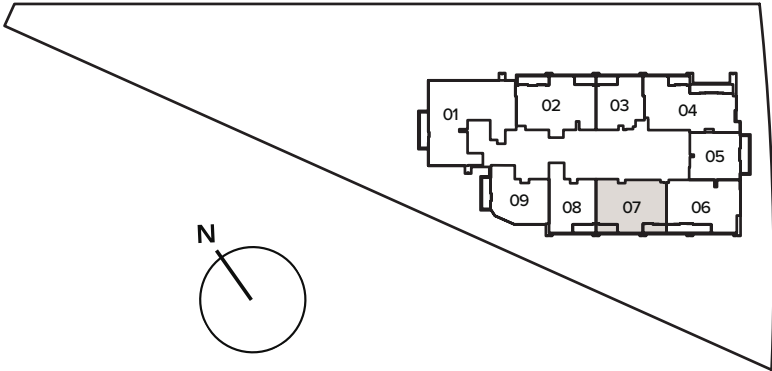
4th FLOOR
405

8th - 16th FLOOR
807

5th FLOOR
505

6th FLOOR
605

8th - 16th FLOOR

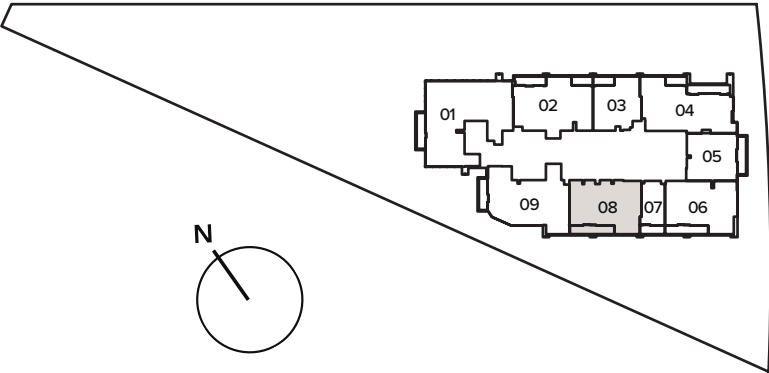


2 B E D R O O M
T Y P E C

Internal Living Area : 1328.48 Sq. Ft
Outdoor Living Area : 151.77 Sq. Ft
Total Living Area : 1480.25 Sq. Ft



18th - 36th FLOOR



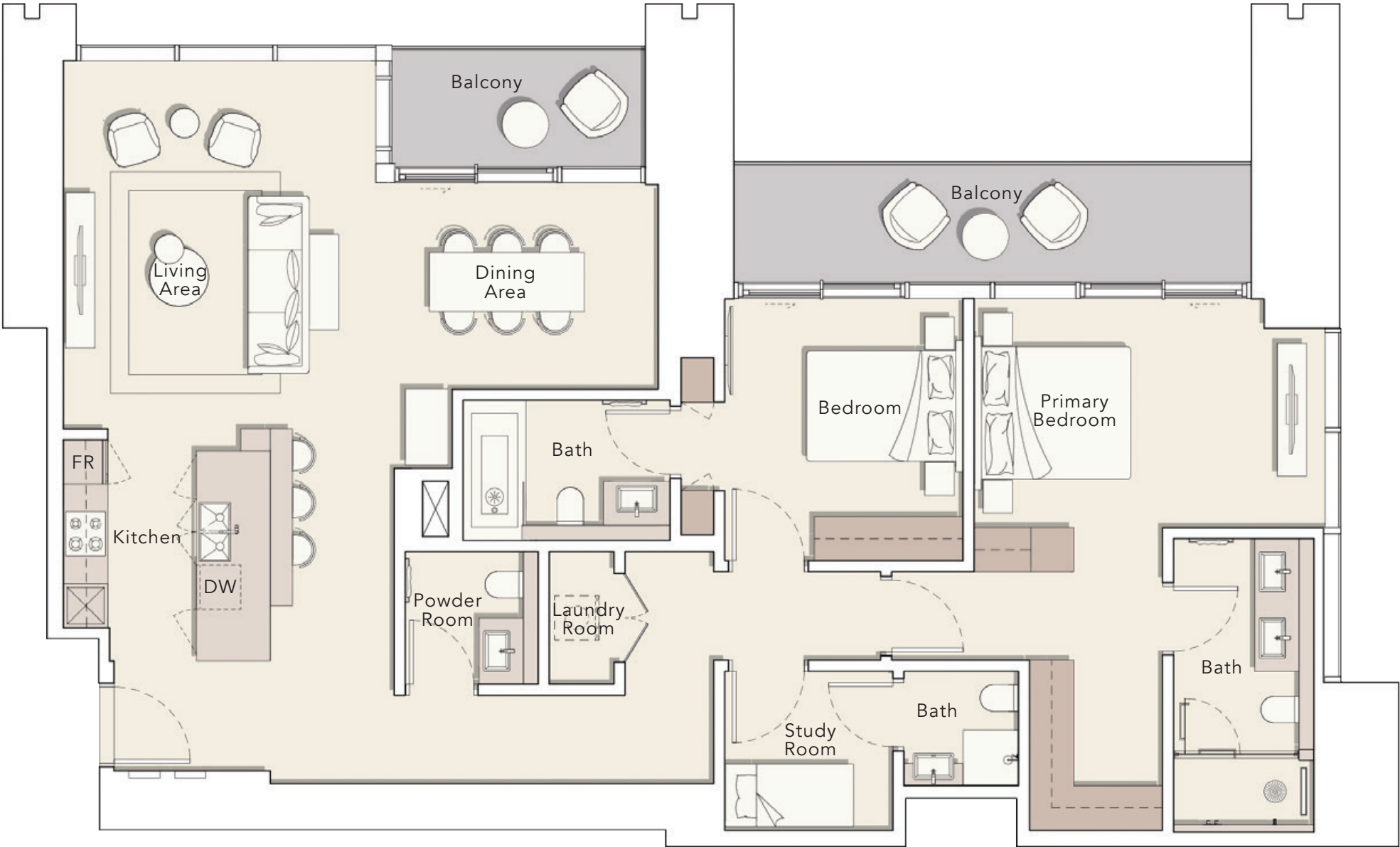
2 BEDROOM + S

TYPE A

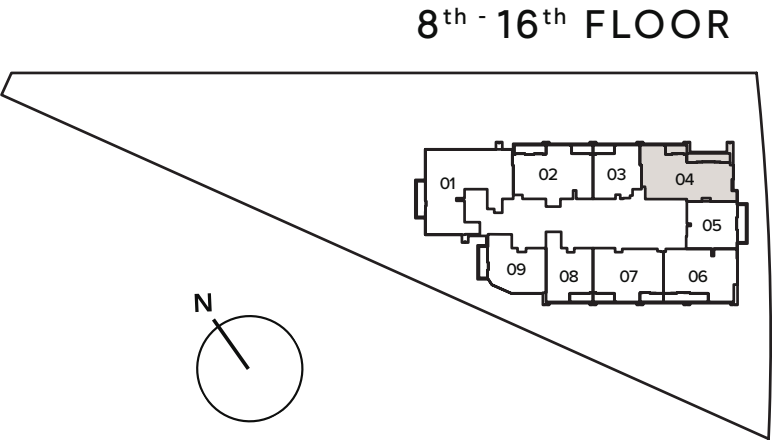
Internal Living Area : 1573.04 Sq. Ft

Outdoor Living Area : 222.92 Sq. Ft

Total Living Area : 1795.96 Sq. Ft



3rd FLOOR 302	7th FLOOR 702
4th FLOOR 402	8th - 16th FLOOR 804
5th FLOOR 502	18th - 36th FLOOR 1804
6th FLOOR 602	



2 BEDROOM + S
TYPE B

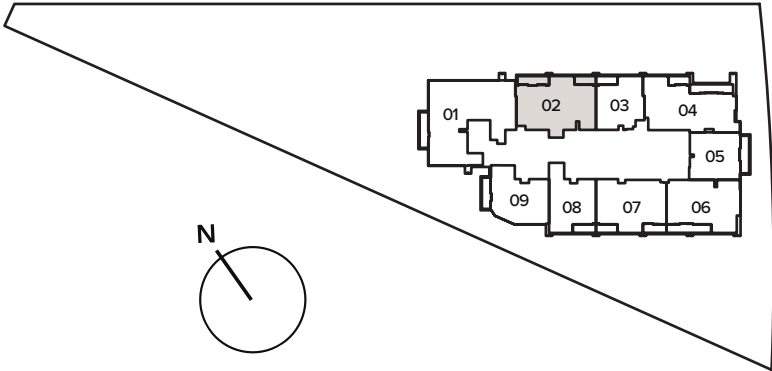
Internal Living Area : 1509.53 Sq. Ft
Outdoor Living Area : 178.79 Sq. Ft
Total Living Area : 1688.32 Sq. Ft



8th - 16th FLOOR
802

18th - 36th FLOOR
1802

8th - 16th FLOOR

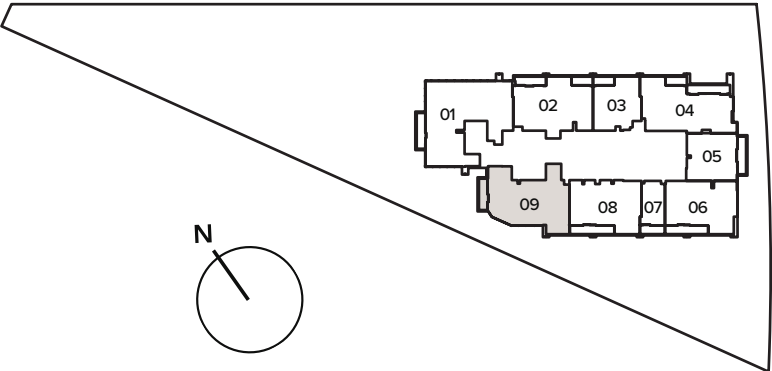


2 B E D R O O M + S
T Y P E C

Internal Living Area : 1678.20 Sq. Ft
Outdoor Living Area : 107.10 Sq. Ft
Total Living Area : 1785.30 Sq. Ft

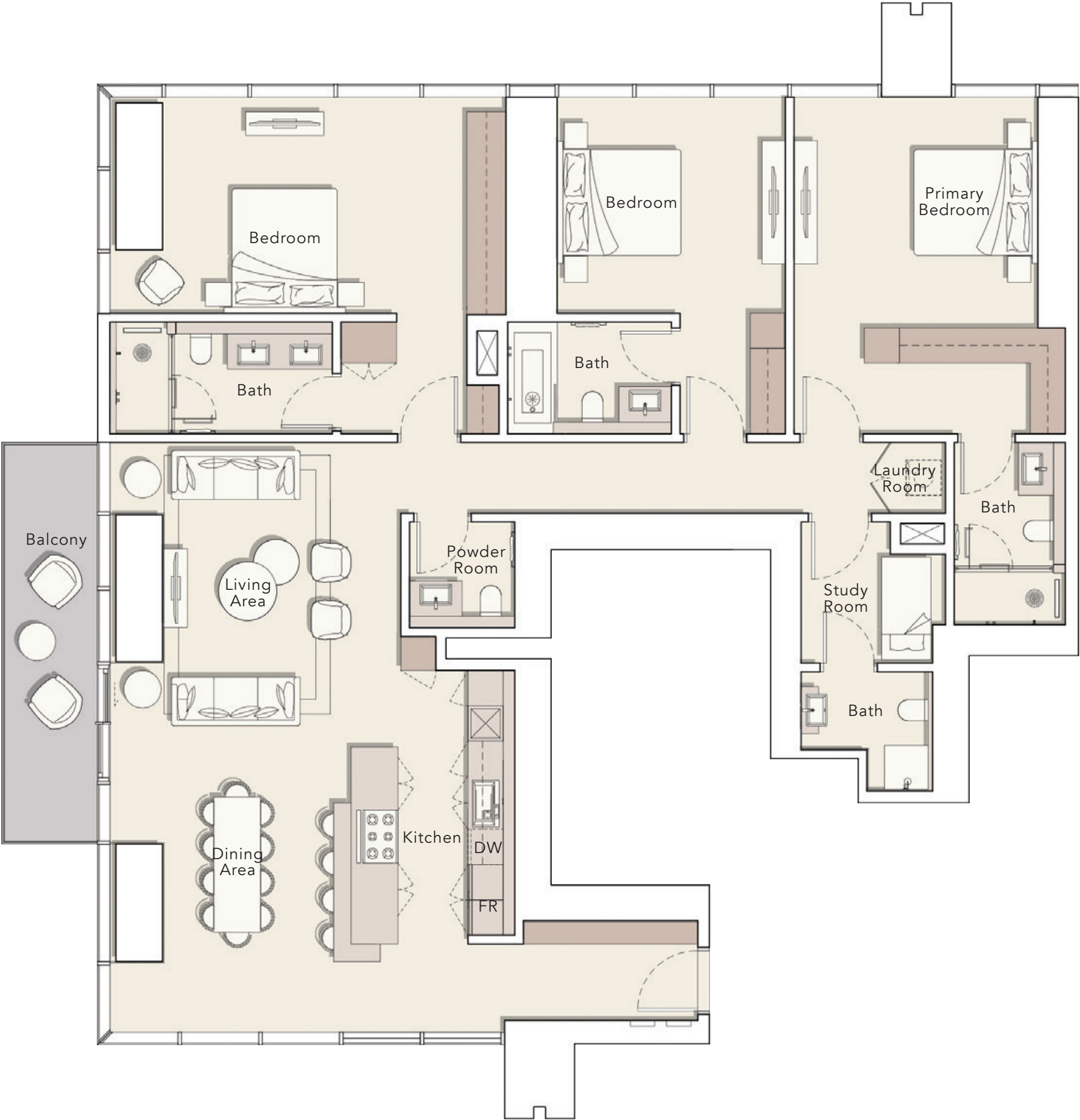


18th - 36th FLOOR



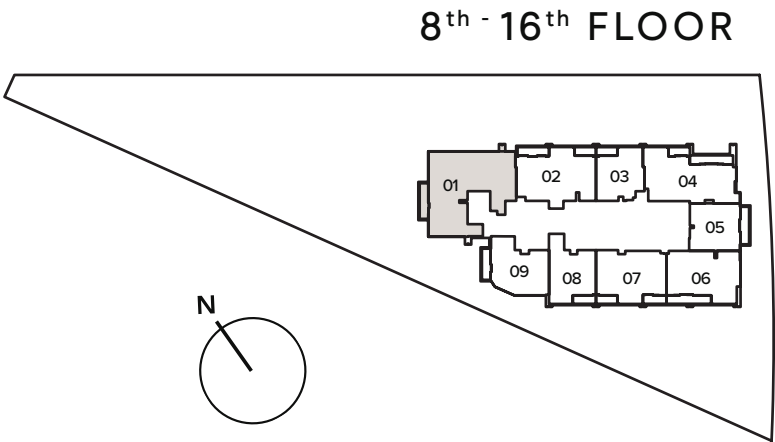
3 B E D R O O M
T Y P E A

Internal Living Area : 2276.24 Sq. Ft
Outdoor Living Area : 121.09 Sq. Ft
Total Living Area : 2397.34 Sq. Ft



8th - 16th FLOOR
801

18th - 36th FLOOR
1801



P R E M I U M
A P A R T M E N T S

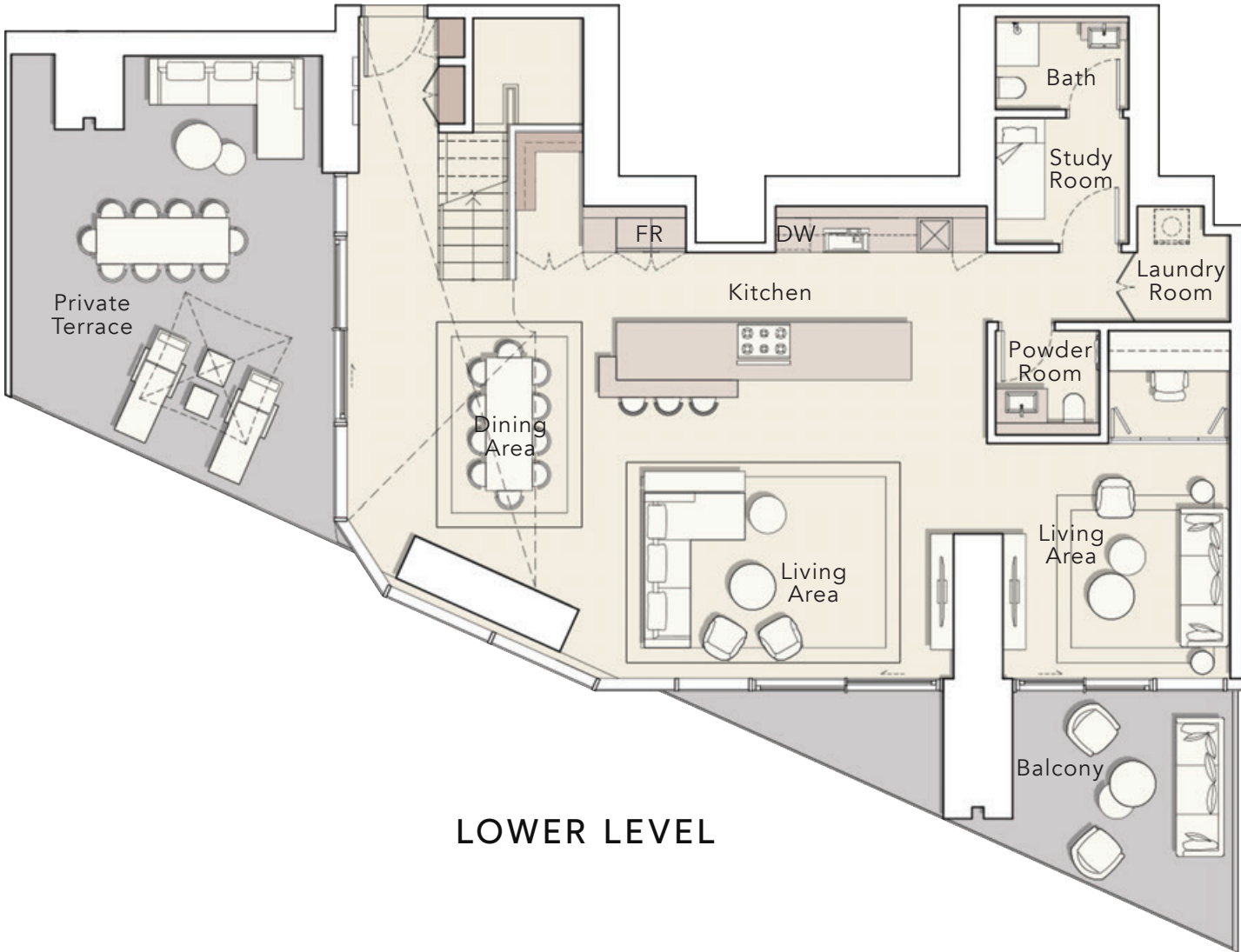
3 BEDROOM DUPLEX

TYPE A

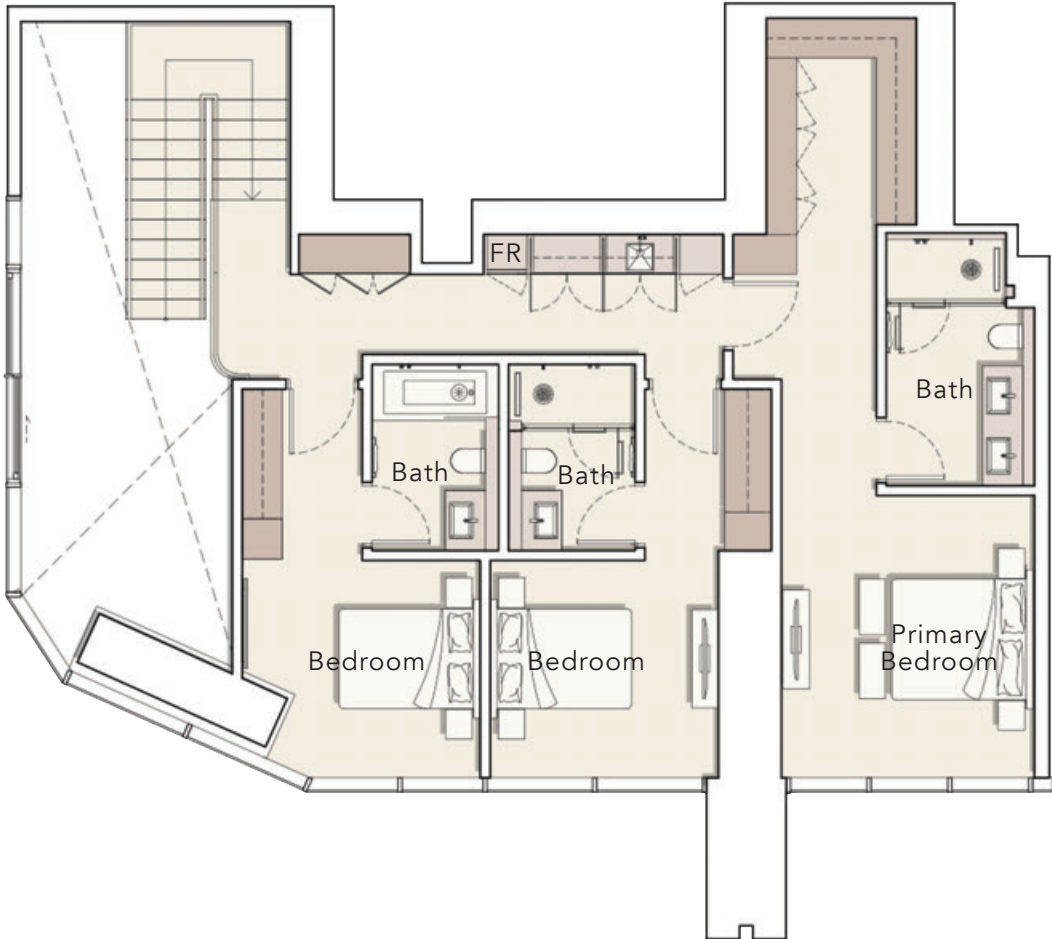
Internal Living Area : 3007.22 Sq. Ft

Outdoor Living Area : 707.30 Sq. Ft

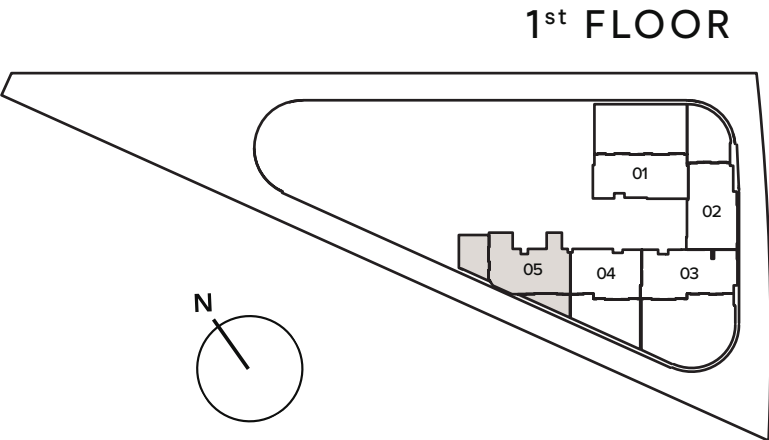
Total Living Area : 3714.52 Sq. Ft



LOWER LEVEL



UPPER LEVEL



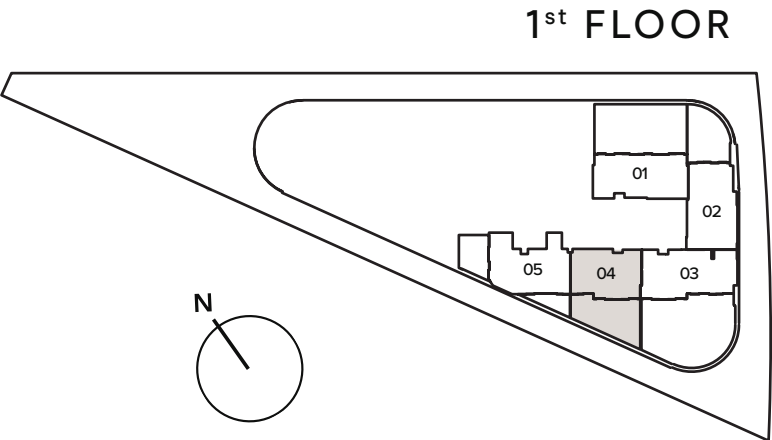
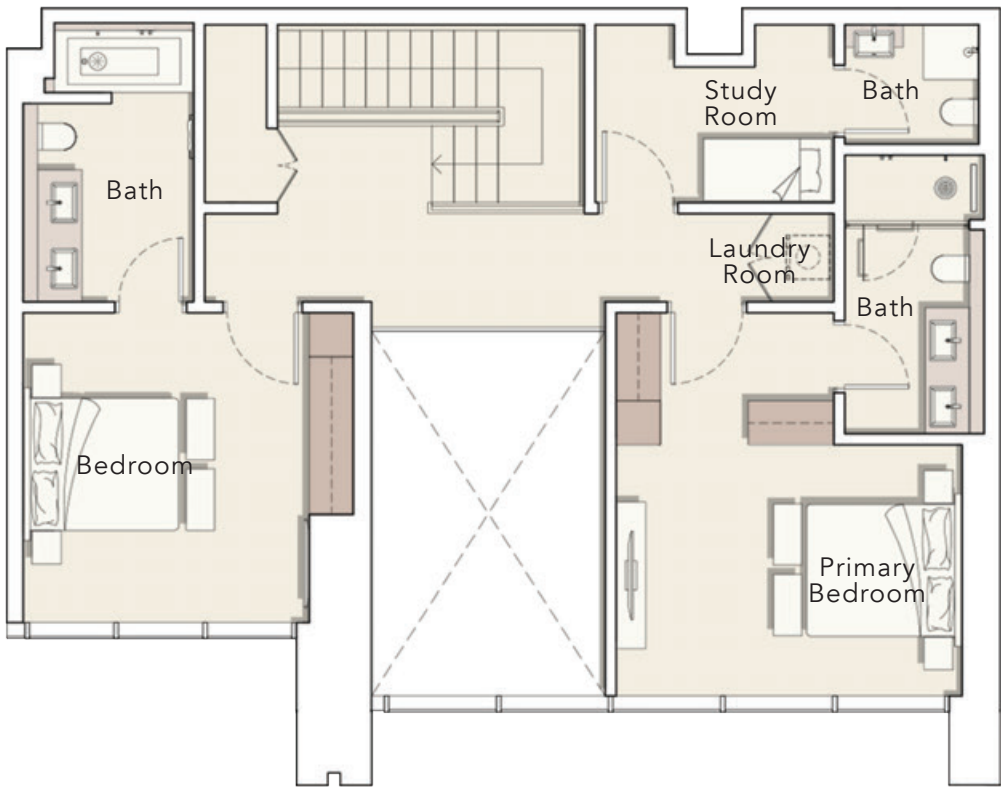
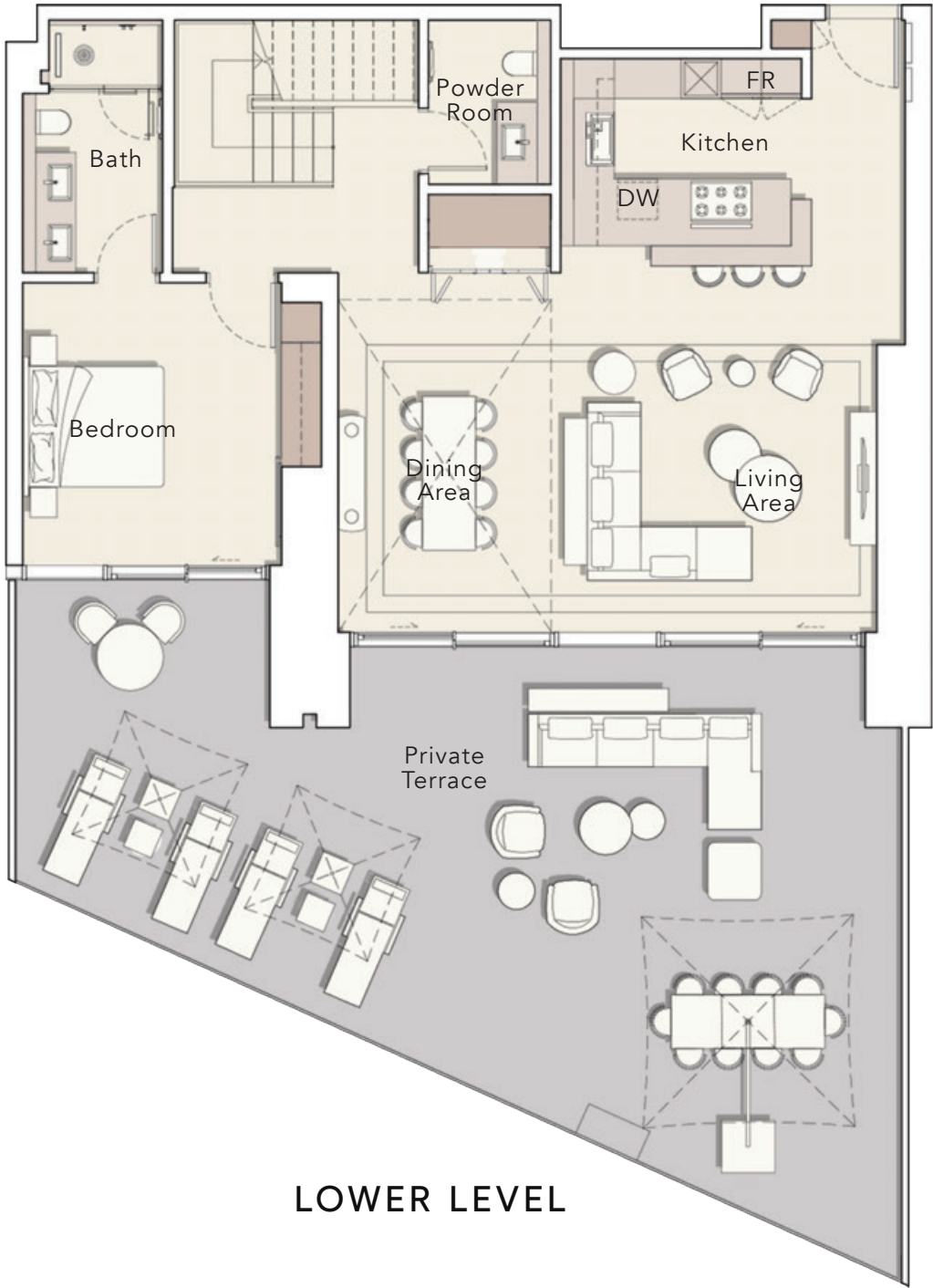
3 BEDROOM DUPLEX

TYPE B

Internal Living Area : 2468.49 Sq. Ft

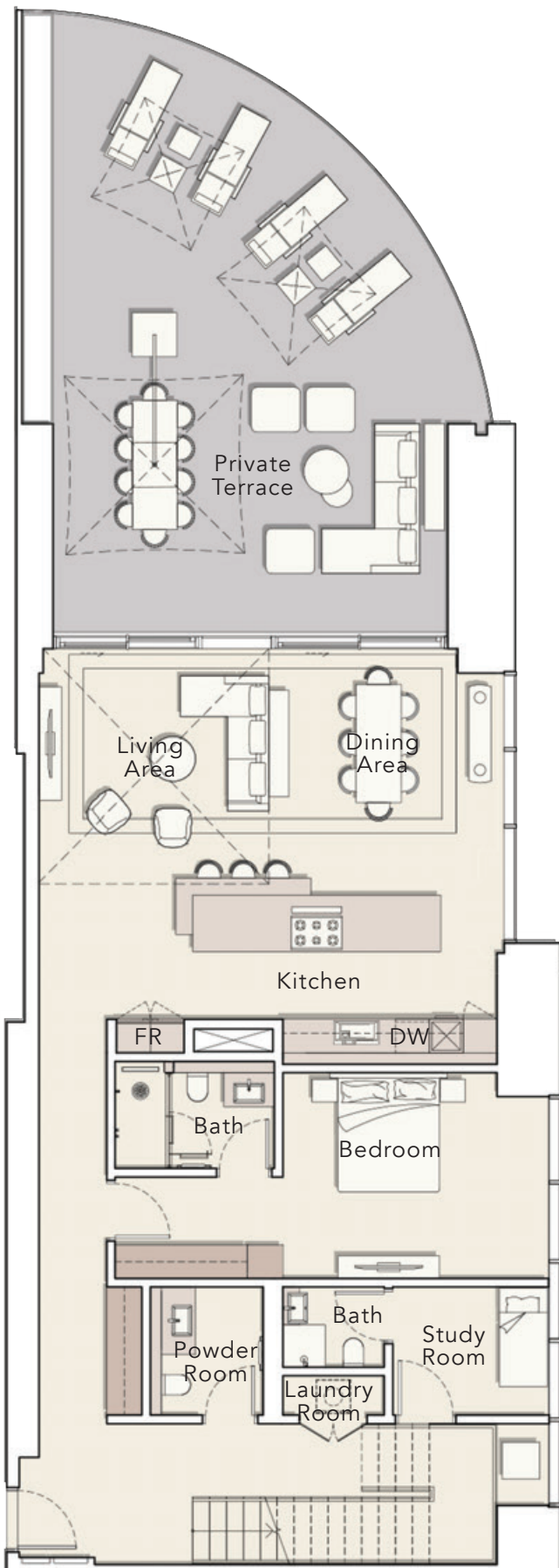
Outdoor Living Area : 993.62 Sq. Ft

Total Living Area : 3462.10 Sq. Ft

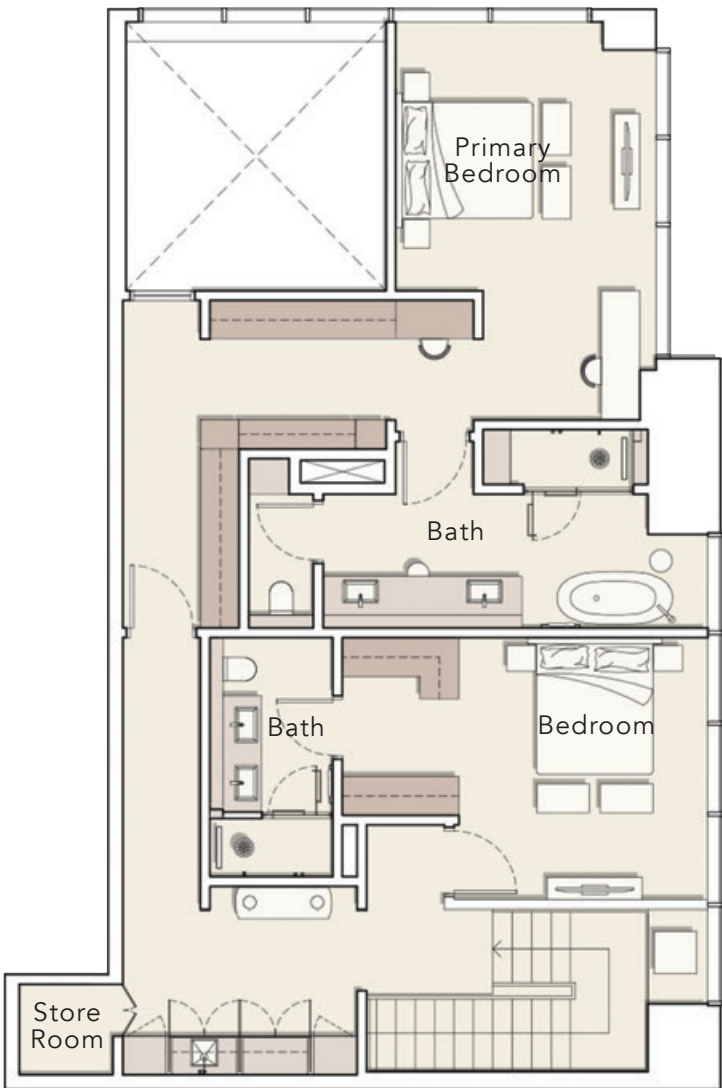


3 BEDROOM DUPLEX
TYPE C

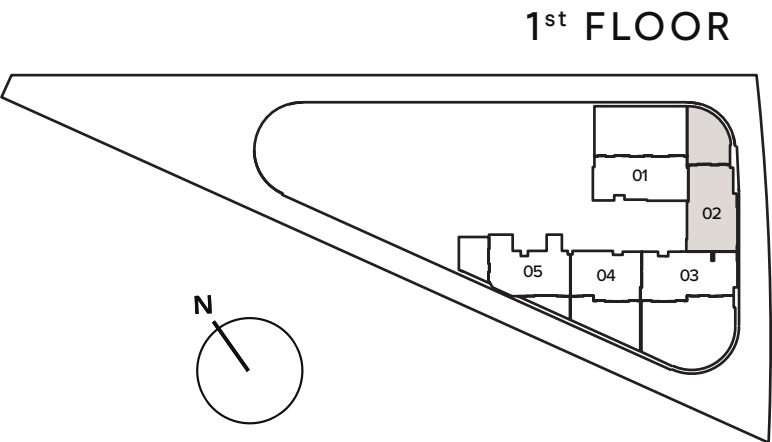
Internal Living Area : 3125.73 Sq. Ft
Outdoor Living Area : 842.92 Sq. Ft
Total Living Area : 3968.65 Sq. Ft



LOWER LEVEL



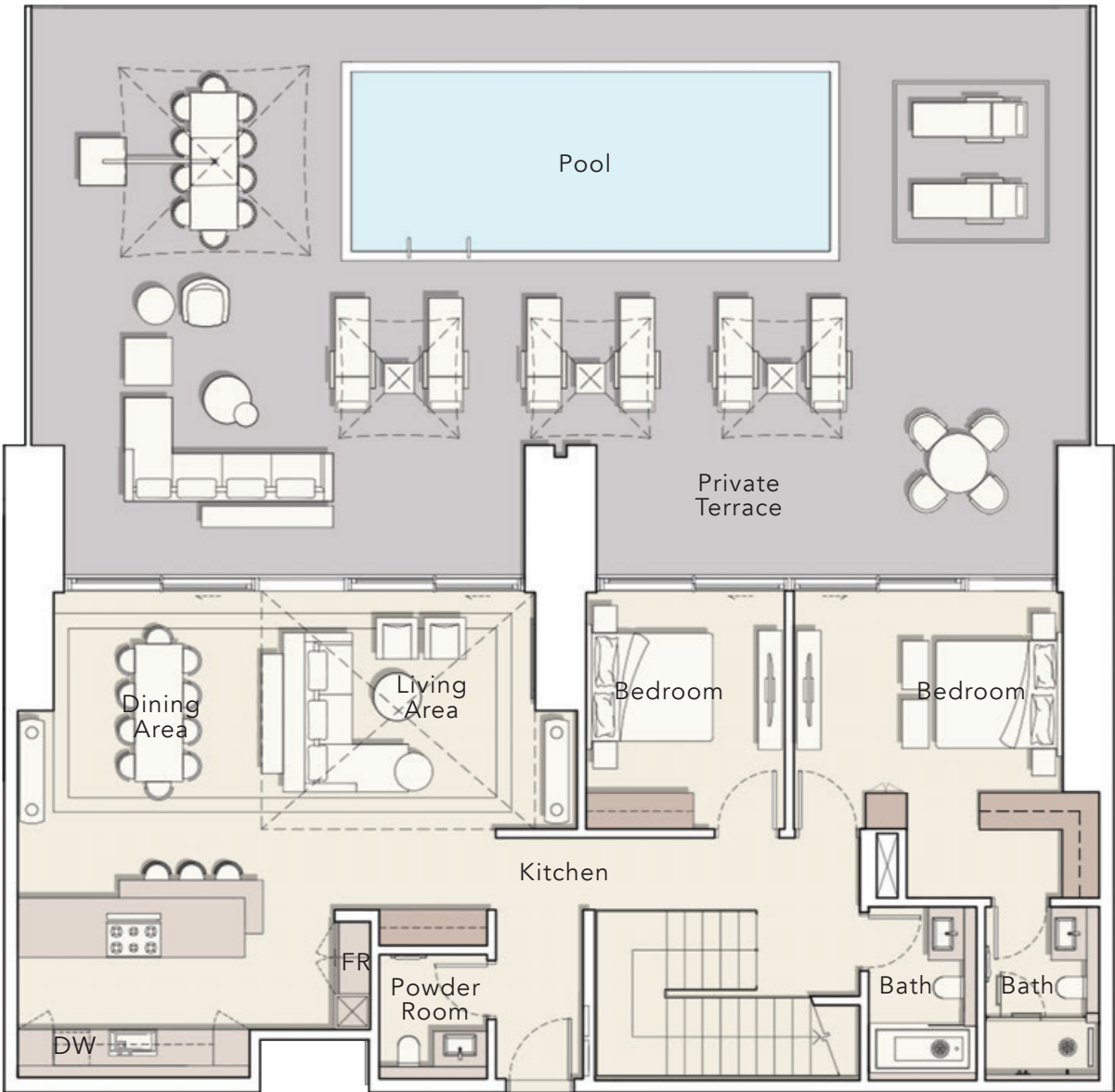
UPPER LEVEL



4 BEDROOM DUPLEX

TYPE A

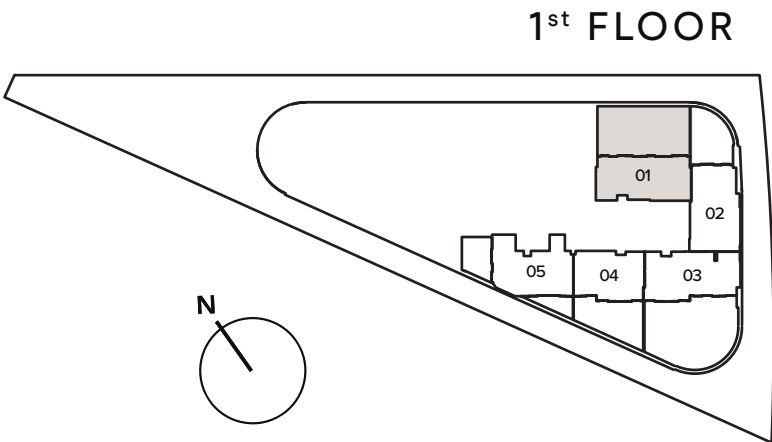
Internal Living Area : 3128.96 Sq. Ft
Outdoor Living Area : 1842.89 Sq. Ft
Total Living Area : 4971.85 Sq. Ft



LOWER LEVEL



UPPER LEVEL

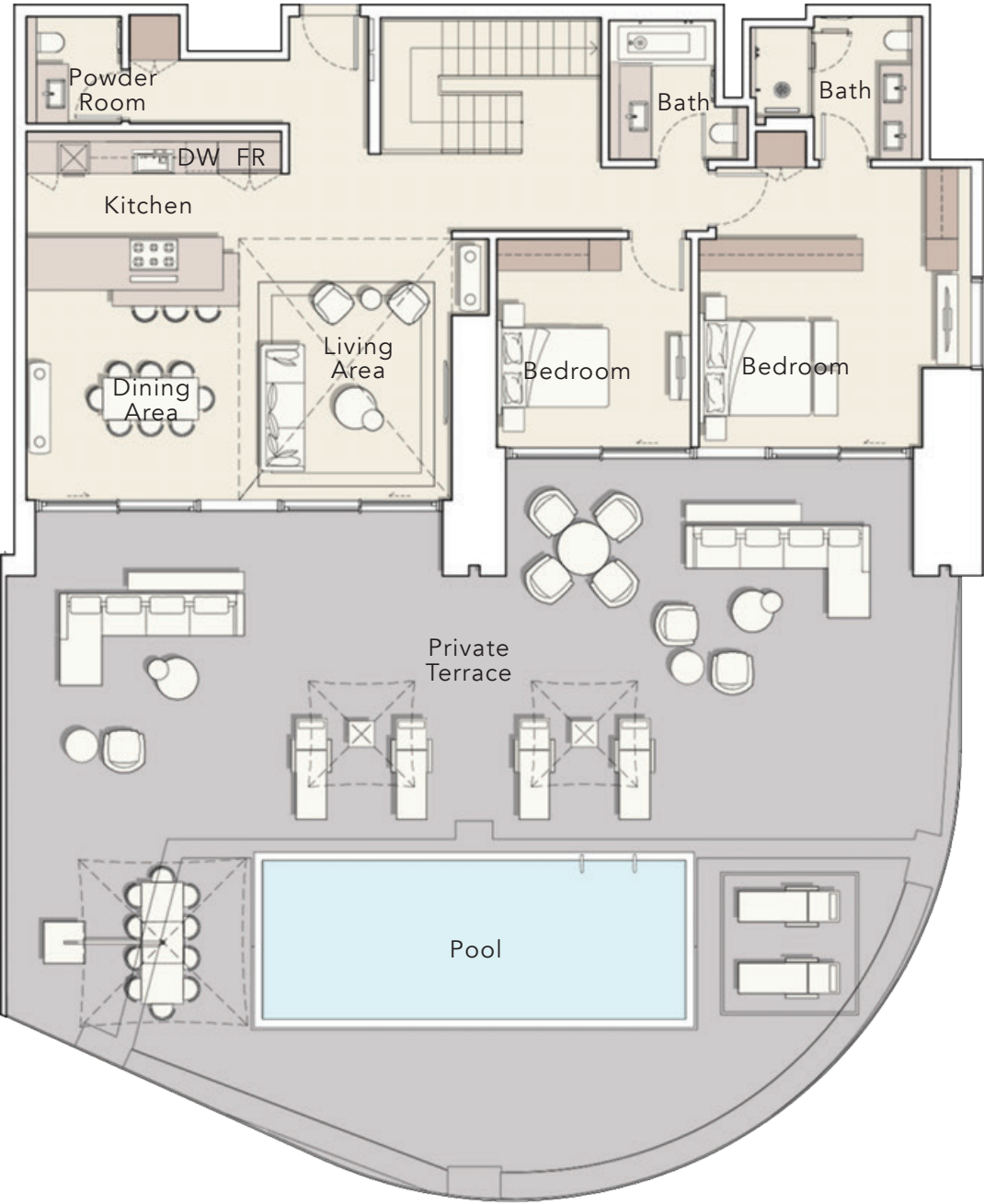


1st FLOOR

4 BEDROOM DUPLEX

TYPE B

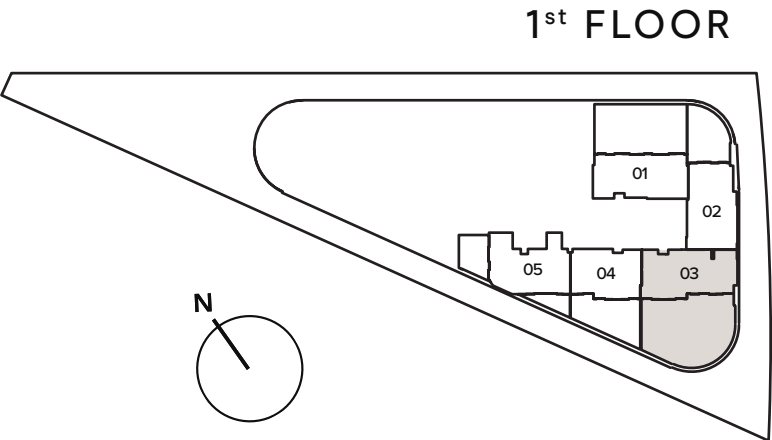
Internal Living Area : 3246.50 Sq. Ft
Outdoor Living Area : 2329.74 Sq. Ft
Total Living Area : 5576.24 Sq. Ft



LOWER LEVEL



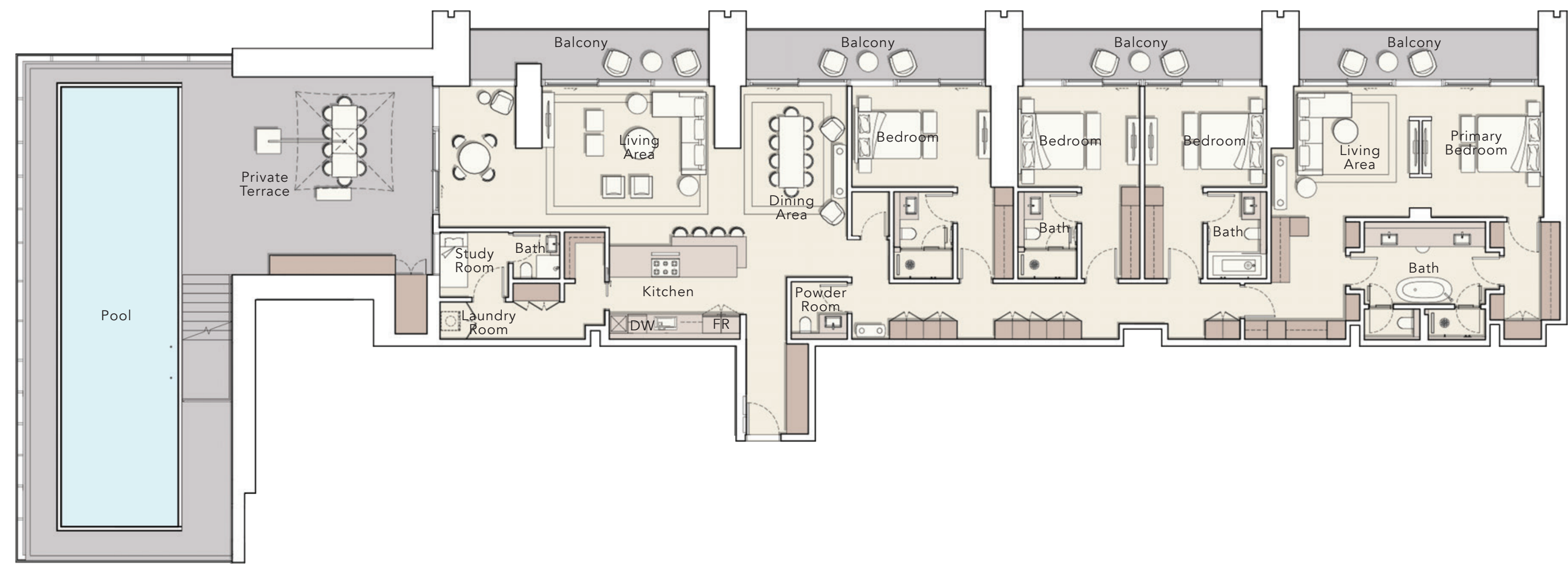
UPPER LEVEL



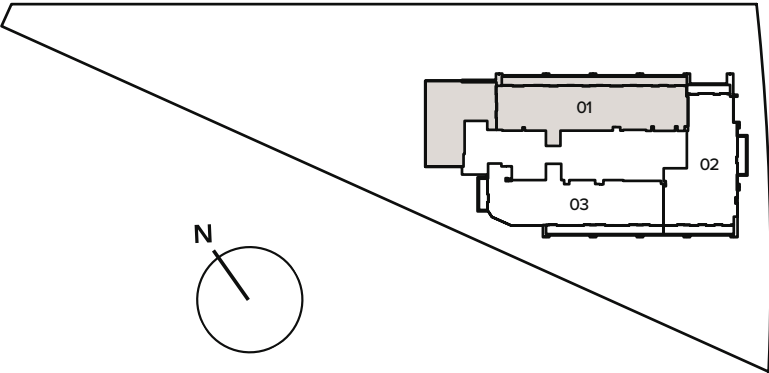
1st FLOOR

P E N T H O U S E
T Y P E A

Internal Living Area : **3398.92 Sq. Ft**
Outdoor Living Area : **2448.57 Sq. Ft**
Total Living Area : **5847.49 Sq. Ft**

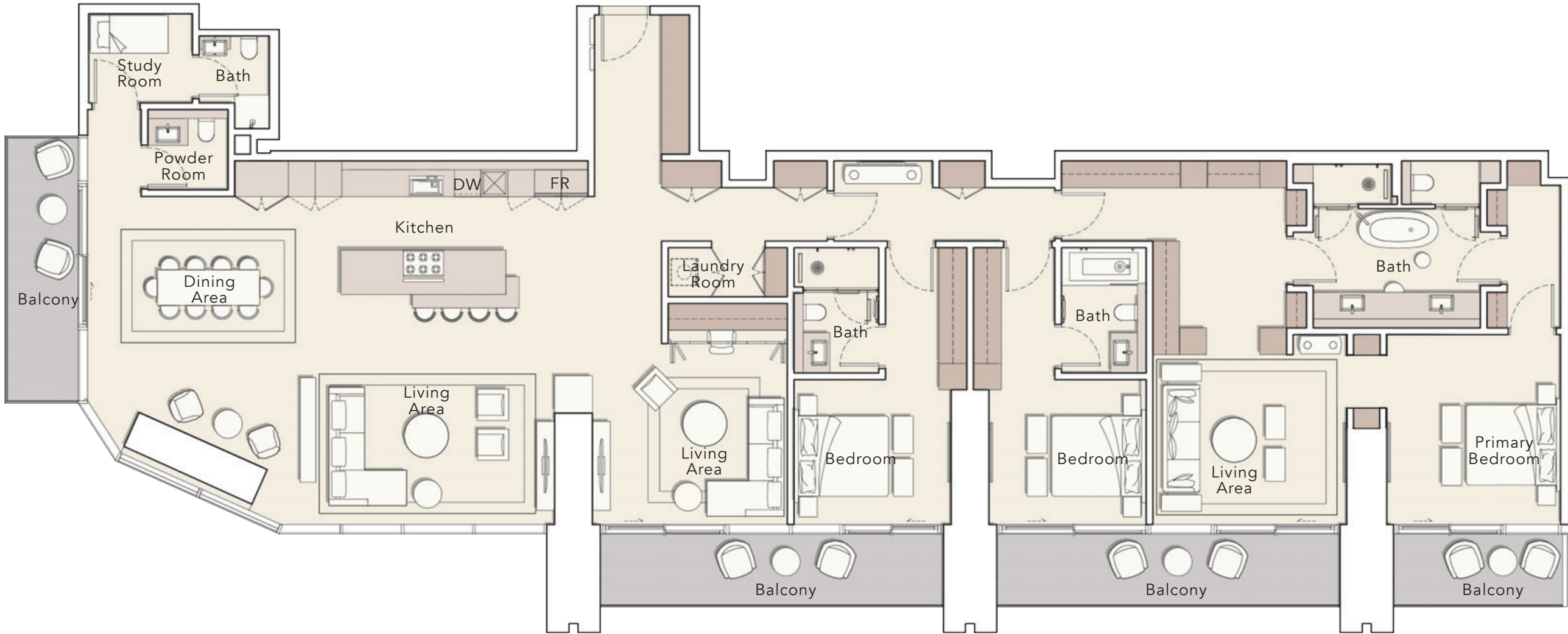


37th FLOOR

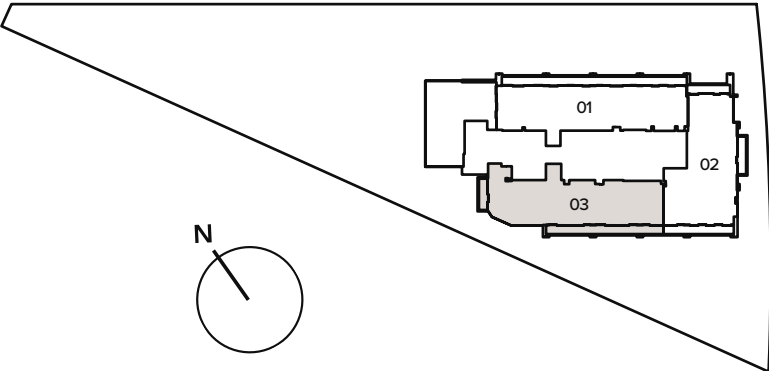


P E N T H O U S E
T Y P E B

Internal Living Area : 3221.42 Sq. Ft
Outdoor Living Area : 513.22 Sq. Ft
Total Living Area : 3734.65 Sq. Ft

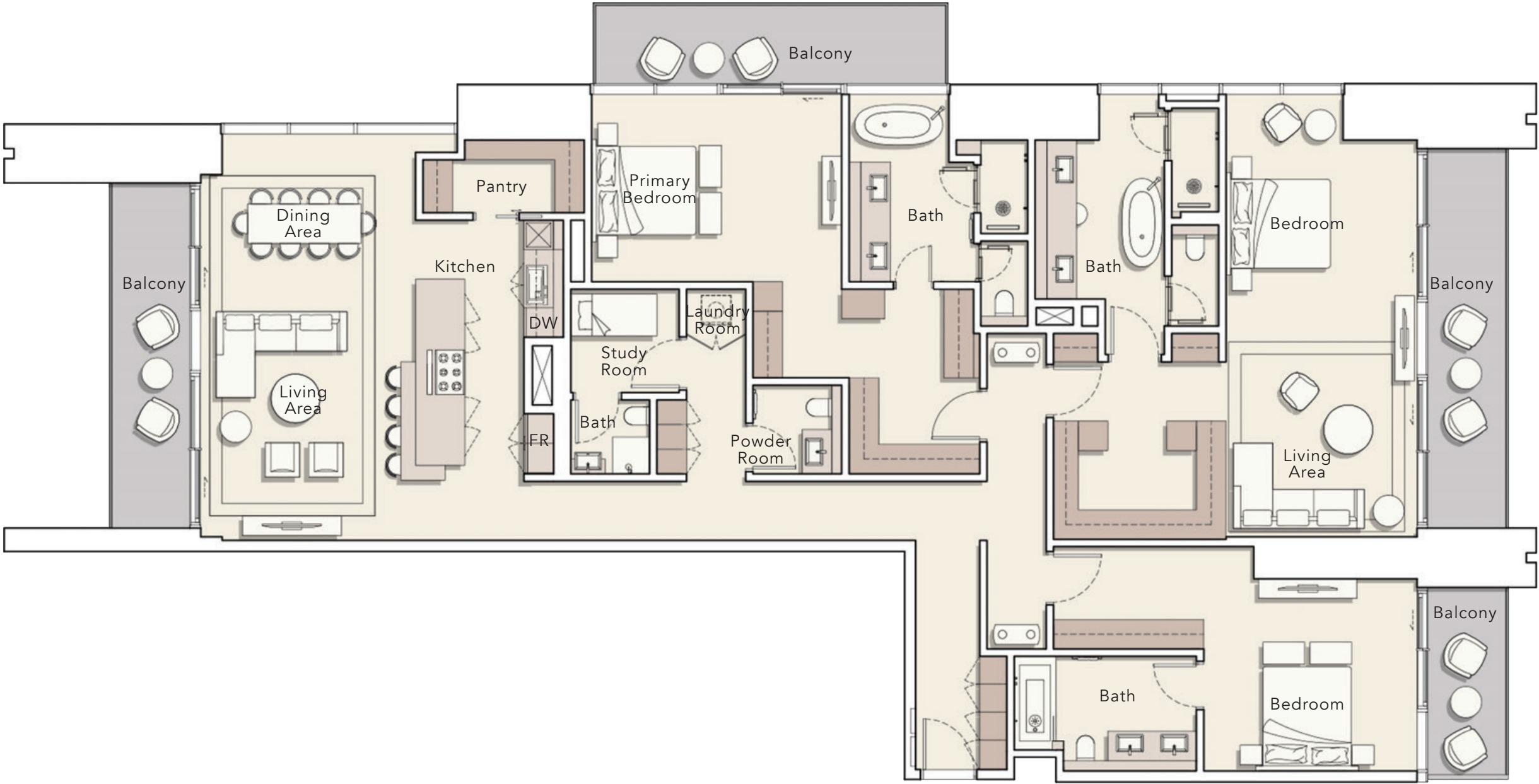


37th FLOOR

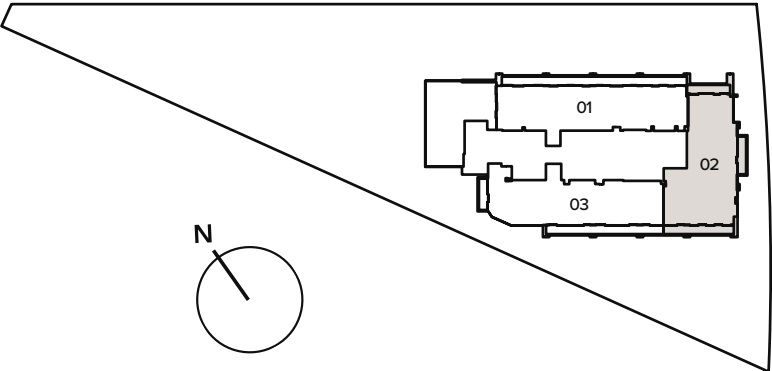


P E N T H O U S E
T Y P E C

Internal Living Area : 2980.96 Sq. Ft
Outdoor Living Area : 521.83 Sq. Ft
Total Living Area : 3502.79 Sq. Ft



37th FLOOR



 ELLINGTON | **DUTCO**