

# SANCTUARY

BY PRESTIGE ONE

# UNIT PLANS



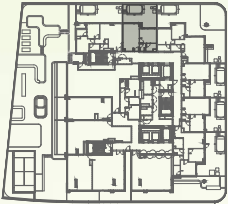
# Unit Plans | Residential

Name	Area (m²)	Area (ft²)
Suite Area	54.92	591.2
Balcony Area	48.36	520.5
Total Area	103.28	1111.7



## 1 BEDROOM TYPE A

### BALCONY 01



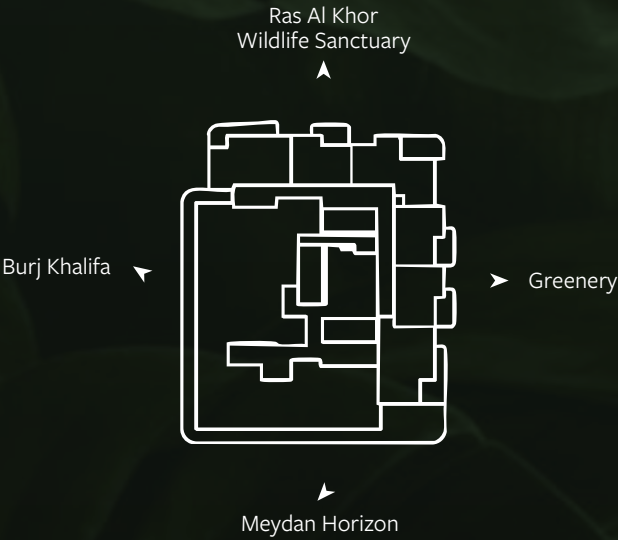
Level 01



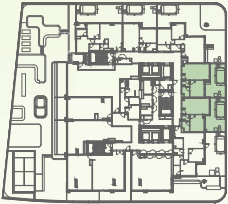


# Unit Plans | Residential

Name	Area (m²)	Area (ft²)
Suite Area	55.22	594.4
Balcony Area	39.38	423.9
Total Area	94.6	1018.3



## 1 BEDROOM TYPE A BALCONY 02



Level 01



# Unit Plans | Residential

Name	Area (m²)	Area (ft²)
Suite Area	54.63	588.0
Balcony Area	10.41	112.1
Total Area	65.04	700.1



## 1 BEDROOM TYPE A

### BALCONY 03



Level 02-08



Level 10-12

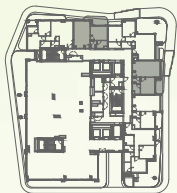


Level 13-20

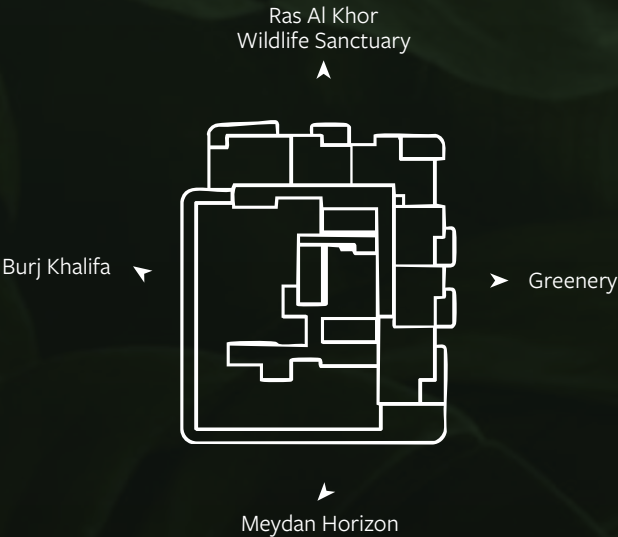


# Unit Plans | Residential

Name	Area (m²)	Area (ft²)
Suite Area	54.94	591.4
Balcony Area	6.22	67.0
Total Area	61.16	658.3



Level 02-08



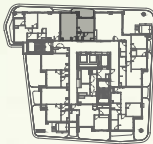
## 1 BEDROOM TYPE A BALCONY 04

# Unit Plans | Residential

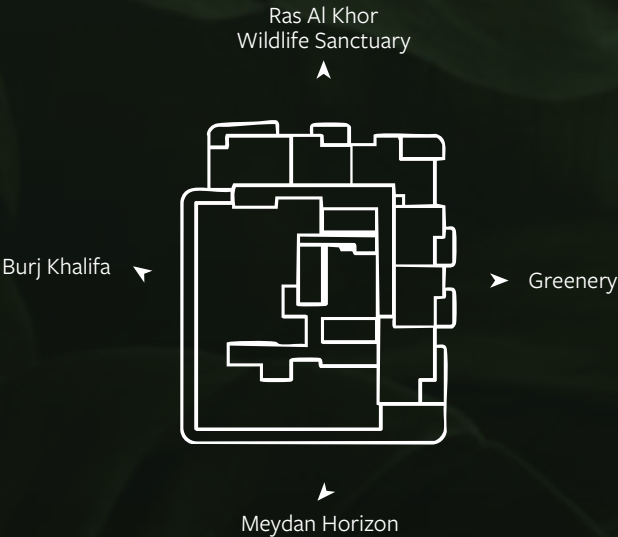
Name	Area (m²)	Area (ft²)
Suite Area	54.84	590.3
Balcony Area	6.04	65.0
Total Area	60.88	655.3



Level 10-12



Level 13-20



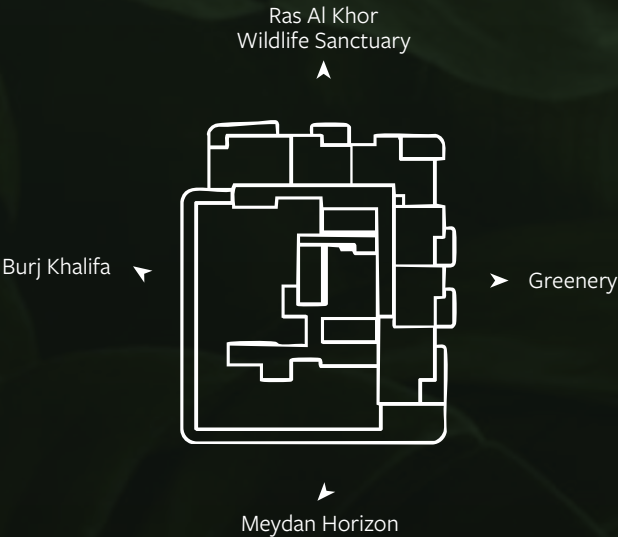
## 1 BEDROOM TYPE A BALCONY 5



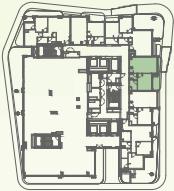


# Unit Plans | Residential

Name	Area (m²)	Area (ft²)
Suite Area	54.83	590.2
Balcony Area	12.26	132.0
Total Area	67.09	722.2



## 1 BEDROOM TYPE A BALCONY 6



Level 02-08



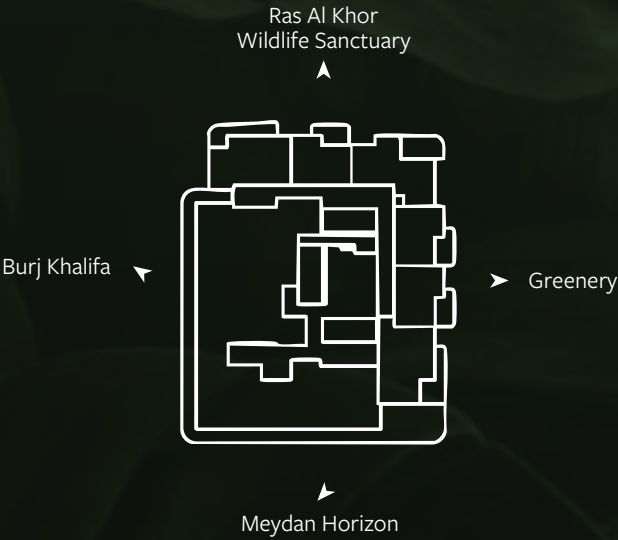
Level 10-12





# Unit Plans | Residential

Name	Area (m²)	Area (ft²)
Suite Area	54.6	587.7
Balcony Area	9.97	107.3
Total Area	64.57	695.0



## 1 BEDROOM TYPE A BALCONY 7

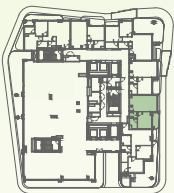


Level 10-12



# Unit Plans | Residential

Name	Area (m²)	Area (ft²)
Suite Area	54.98	591.8
Balcony Area	6.7	72.1
Total Area	61.68	663.9



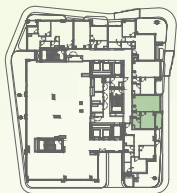
Level 02-08



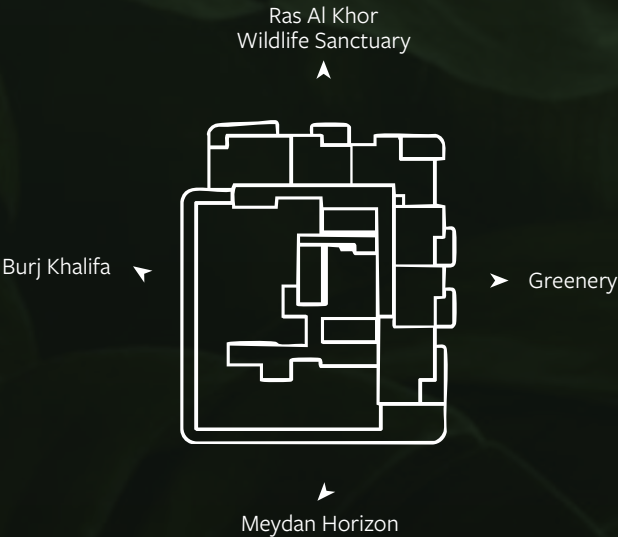
## 1 BEDROOM TYPE A BALCONY 8

# Unit Plans | Residential

Name	Area (m²)	Area (ft²)
Suite Area	54.98	591.8
Balcony Area	7.42	79.9
Total Area	62.4	671.7



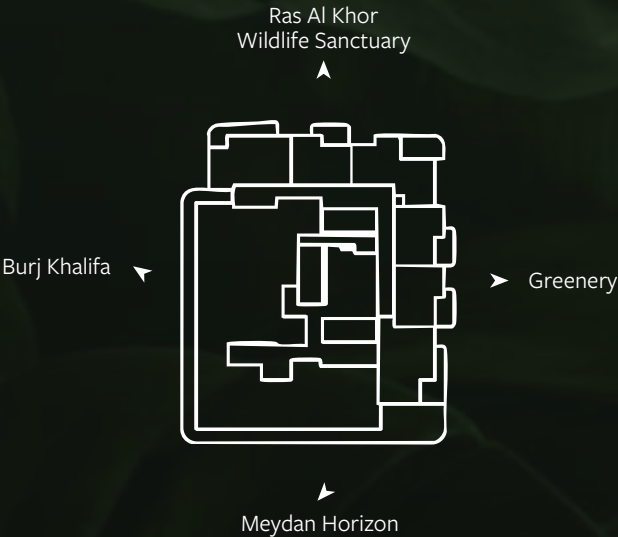
Level 02-08



## 1 BEDROOM TYPE A BALCONY 9

# Unit Plans | Residential

Name	Area (m²)	Area (ft²)
Suite Area	54.88	590.7
Balcony Area	36.08	388.4
Total Area	90.96	979.1



## 1 BEDROOM TYPE A BALCONY 10



Level 10-12



Level 13-20

SANCTUARY  
BY PRESTIGE ONE



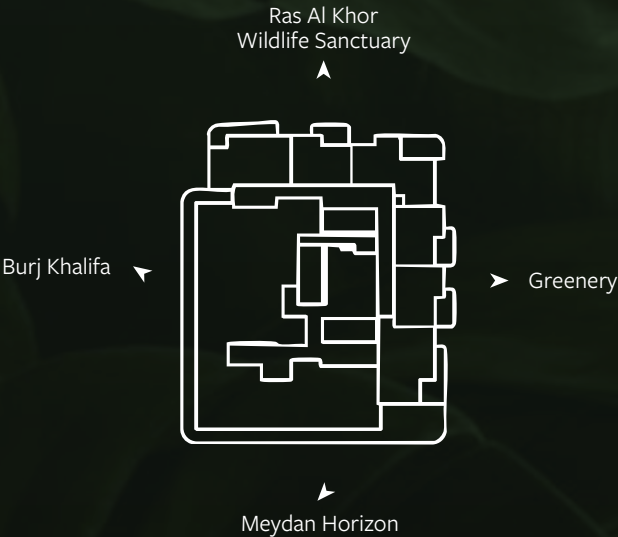
PRESTIGE ONE  
DEVELOPMENTS

All drawings and dimensions are approximate. Drawings are not to scale and are subject to change without notice. The developer reserves the right in the building and columns may vary in size depending on the floor level. The furnishings and accessories shown are for representation only. Theon which floor and which orientation the unit is located within the building to comply with the building authority regulations. Apartment unit sizesand Purchase Agreement.



# Unit Plans | Residential

Name	Area (m²)	Area (ft²)
Suite Area	54.88	590.7
Balcony Area	33.98	365.8
Total Area	88.86	956.5

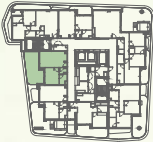


## 1 BEDROOM TYPE A

### BALCONY 11



Level 10-12

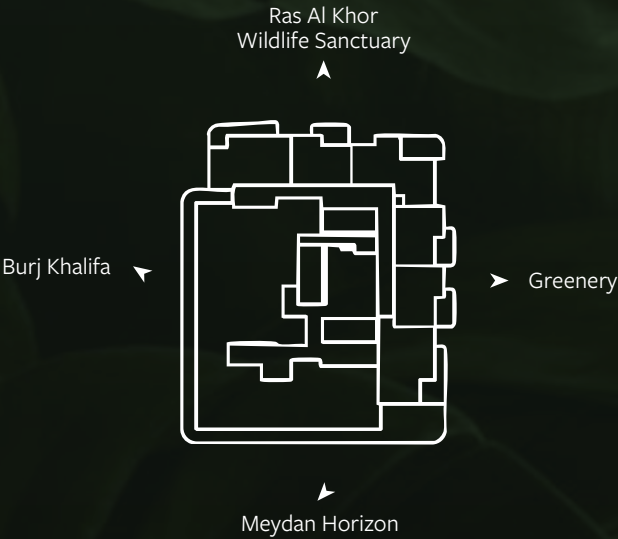


Level 13-20



# Unit Plans | Residential

Name	Area (m²)	Area (ft²)
Suite Area	54.83	590.2
Balcony Area	34.18	367.9
Total Area	89.01	958.1



## 1 BEDROOM TYPE A

BALCONY 12

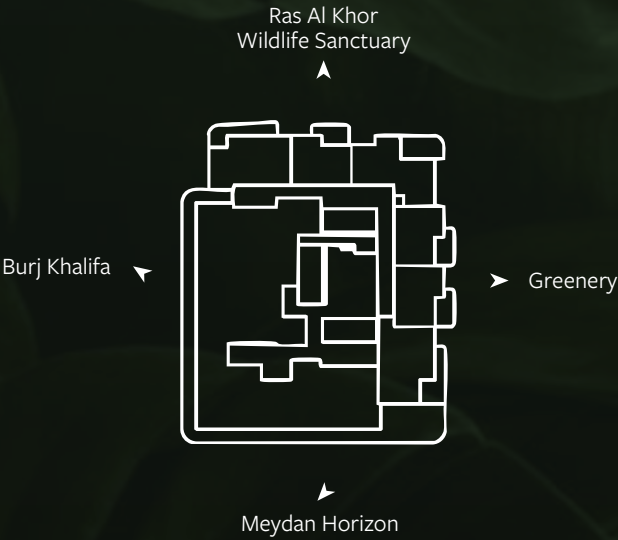


Level 10-12



# Unit Plans | Residential

Name	Area (m²)	Area (ft²)
Suite Area	56.15	604.4
Balcony Area	44.9	483.3
Total Area	101.05	1087.7



## 1 BEDROOM TYPE A

BALCONY 13



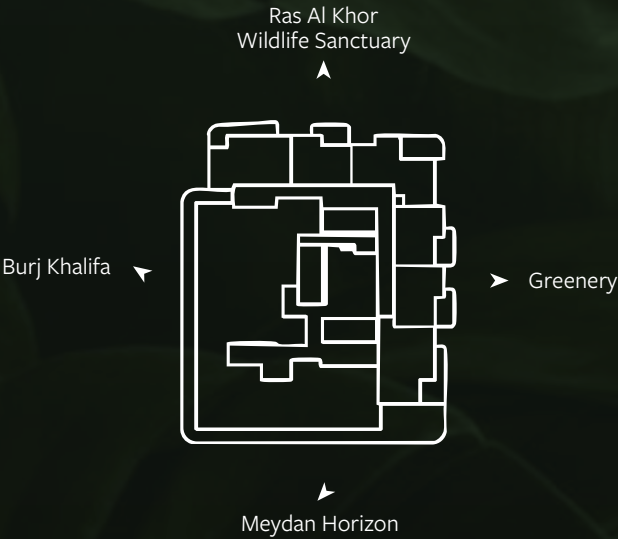
Level 13-20





# Unit Plans | Residential

Name	Area (m²)	Area (ft²)
Suite Area	61.08	657.5
Balcony Area	44.9	483.3
Total Area	105.98	1140.8



## 1 BEDROOM TYPE B BALCONY 01



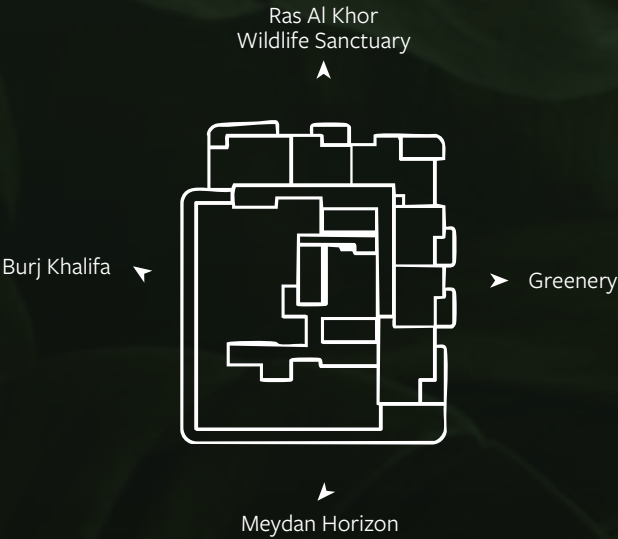
Level 10-12





# Unit Plans | Residential

Name	Area (m²)	Area (ft²)
Suite Area	60.23	648.3
Balcony Area	83.12	894.7
Total Area	143.35	1543.0



## 1 BEDROOM TYPE B BALCONY 02



Level 10-12

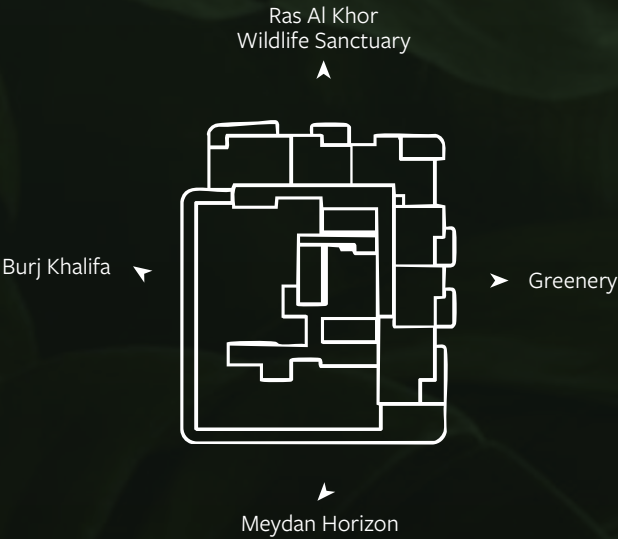
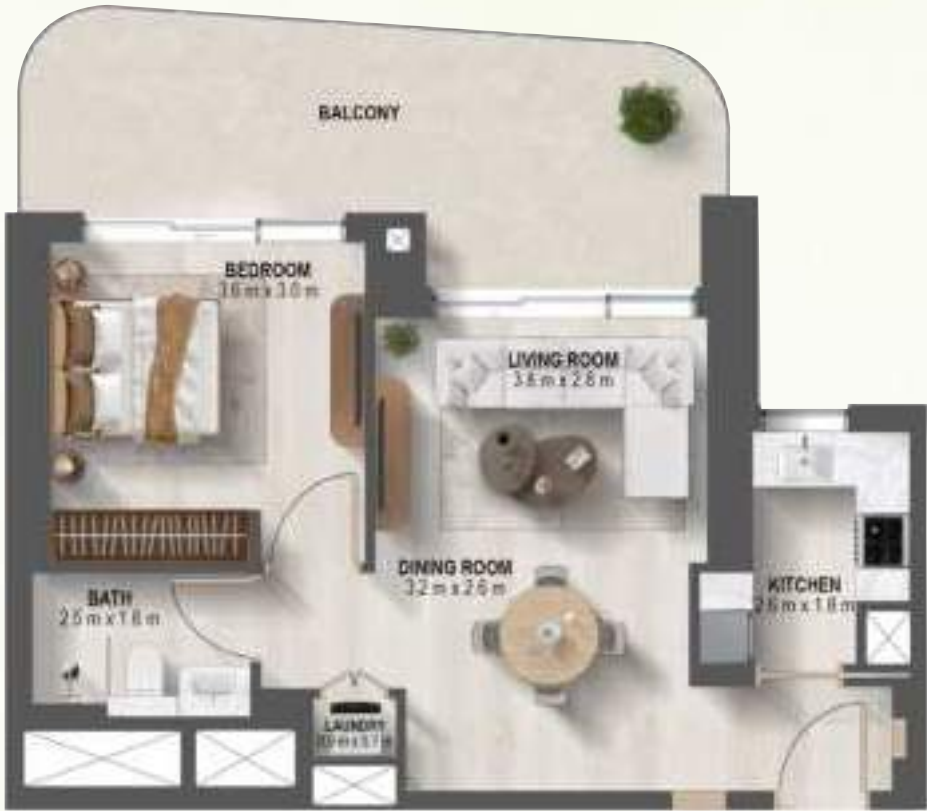


# Unit Plans | Residential

Name	Area (m²)	Area (ft²)
Suite Area	57.24	616.1
Balcony Area	20.66	222.4
Total Area	77.9	838.5



Level 13-20

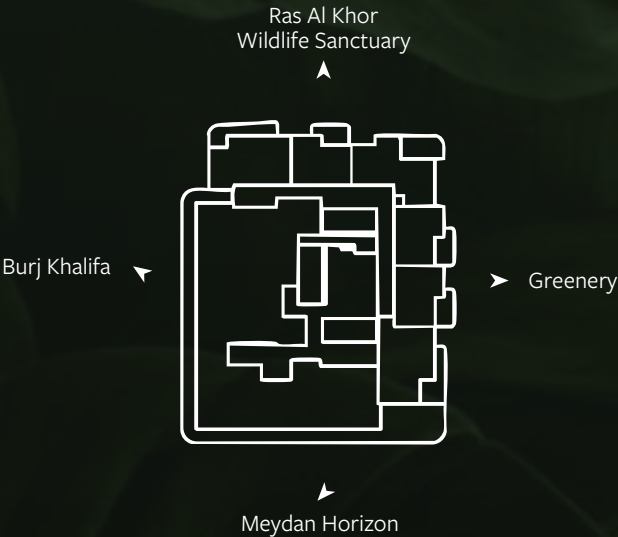


## 1 BEDROOM TYPE C BALCONY 01

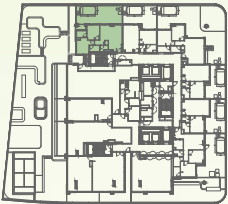


# Eloib Plaza Residential

Name	Area (m²)	Area (ft²)
Suite Area	80.56	867.1
Balcony Area	62.23	669.8
Total Area	142.79	1537.0



## 2 BEDROOM TYPE A BALCONY 01



Level 01

SANCTUARY  
BY PRESTIGE ONE



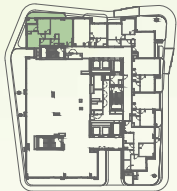
PRESTIGE ONE  
DEVELOPMENTS

All drawings and dimensions are approximate. Drawings are not to scale and are subject to change without notice. The developer reserves the right in the building and columns may vary in size depending on the floor level. The furnishings and accessories shown are for representation only. Theon which floor and which orientation the unit is located within the building to comply with the building authority regulations. Apartment unit sizesand Purchase Agreement.



# Unit Plans | Residential

Name	Area (m²)	Area (ft²)
Suite Area	80.4	865.4
Balcony Area	16.49	177.5
Total Area	96.89	1042.9



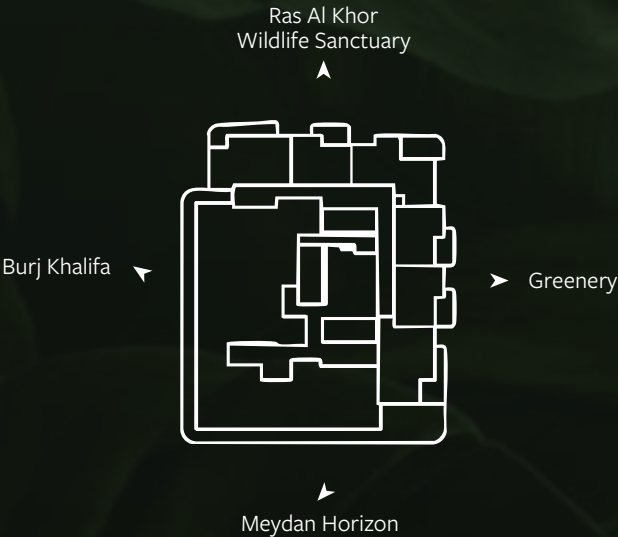
Level 02-08



Level 10-12



Level 13-20

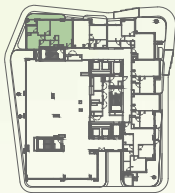


## 2 BEDROOM TYPE A BALCONY 02



# Unit Plans | Residential

Name	Area (m²)	Area (ft²)
Suite Area	80.4	865.4
Balcony Area	19.97	215.0
Total Area	100.37	1080.4



Level 02-08

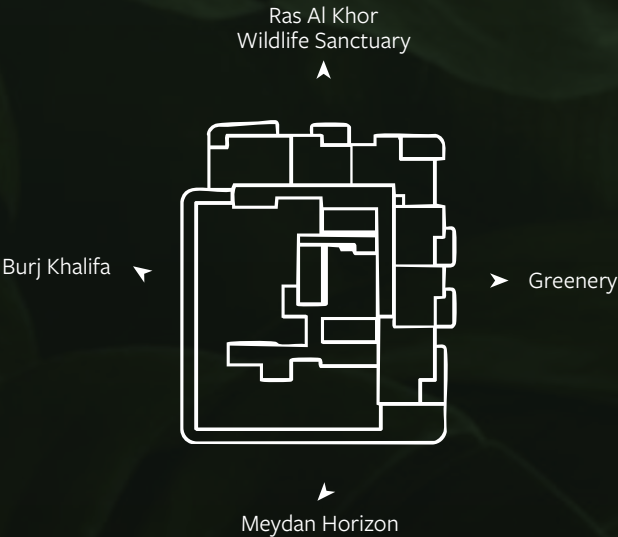


Level 10-12



Level 13-20

SANCTUARY  
BY PRESTIGE ONE



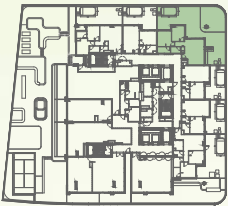
## 2 BEDROOM TYPE A BALCONY 03

PRESTIGE ONE  
DEVELOPMENTS

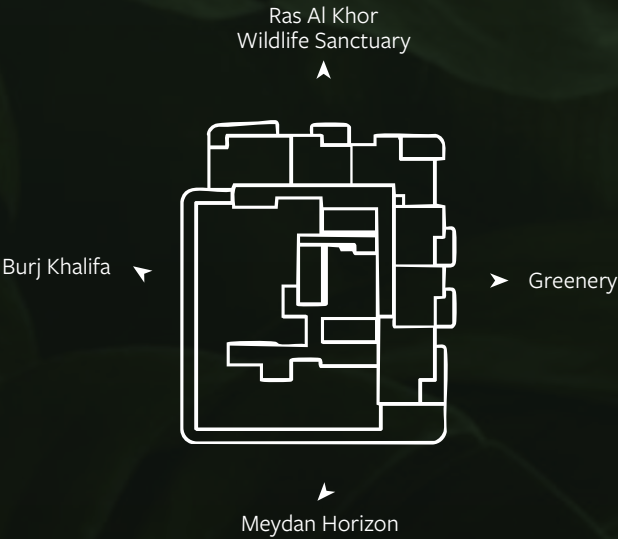
All drawings and dimensions are approximate. Drawings are not to scale and are subject to change without notice. The developer reserves the right in the building and columns may vary in size depending on the floor level. The furnishings and accessories shown are for representation only. Theon which floor and which orientation the unit is located within the building to comply with the building authority regulations. Apartment unit sizesand Purchase Agreement.

# Unit Plans | Residential

Name	Area (m²)	Area (ft²)
Suite Area	82.3	885.9
Balcony Area	155.65	1675.4
Total Area	237.95	2561.3



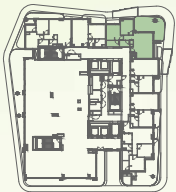
Level 01



## 2 BEDROOM TYPE B BALCONY 01

# Unit Plans | Residential

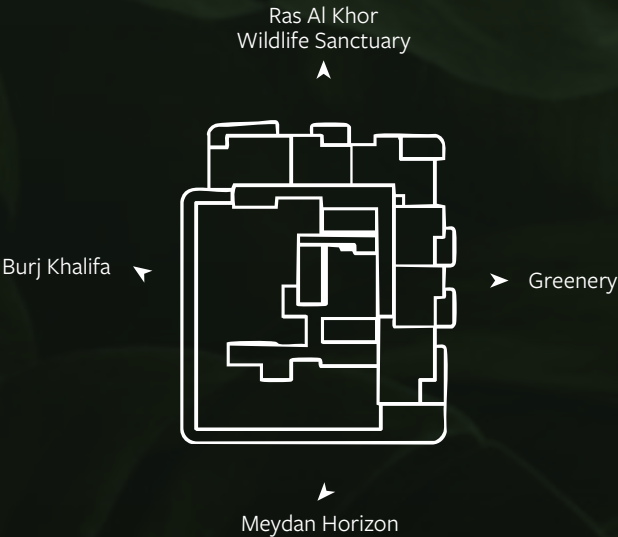
Name	Area (m²)	Area (ft²)
Suite Area	80.05	861.7
Balcony Area	34.88	375.4
Total Area	114.93	1237.1



Level 02-08



Level 10-12



## 2 BEDROOM TYPE B BALCONY 02



# Unit Plans | Residential

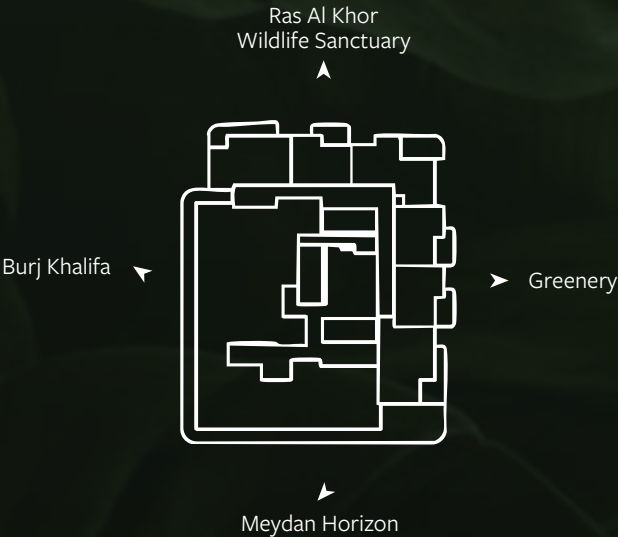
Name	Area (m²)	Area (ft²)
Suite Area	79.81	859.1
Balcony Area	36.22	389.9
Total Area	116.03	1248.9



Level 02-08



Level 10-12

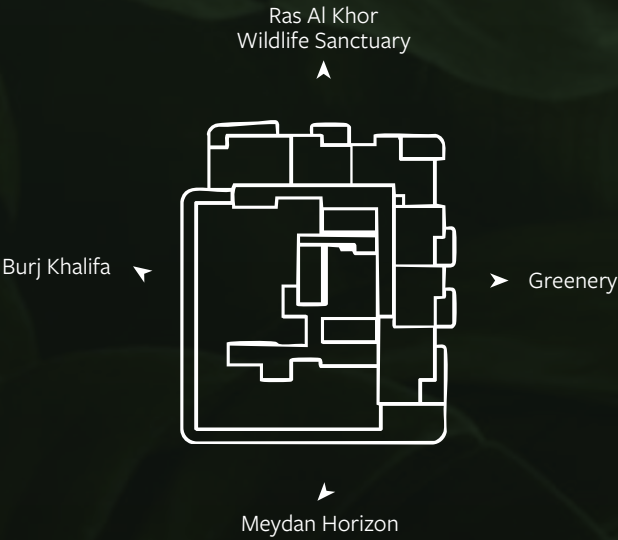


## 2 BEDROOM TYPE B BALCONY 03



# Unit Plans | Residential

Name	Area (m²)	Area (ft²)
Suite Area	85.2	917.1
Balcony Area	65.53	705.4
Total Area	150.73	1622.5



## 2 BEDROOM TYPE C BALCONY 01



Level 01

SANCTUARY  
BY PRESTIGE ONE



PRESTIGE ONE  
DEVELOPMENTS

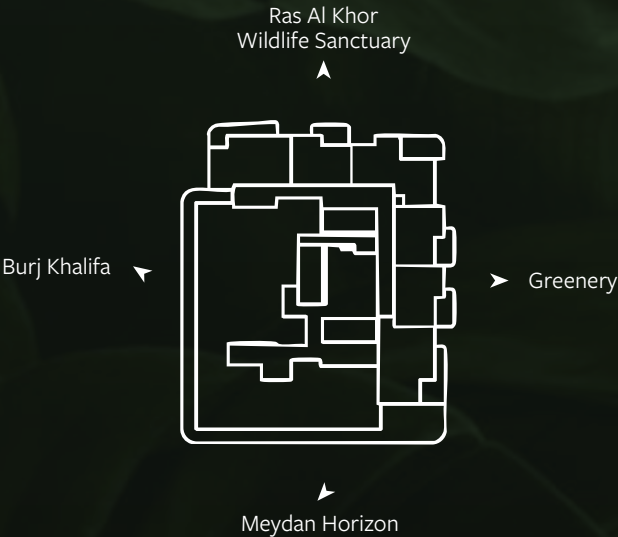
All drawings and dimensions are approximate. Drawings are not to scale and are subject to change without notice. The developer reserves the right in the building and columns may vary in size depending on the floor level. The furnishings and accessories shown are for representation only. Theon which floor and which orientation the unit is located within the building to comply with the building authority regulations. Apartment unit sizesand Purchase Agreement.

# Unit Plans | Residential

Name	Area (m²)	Area (ft²)
Suite Area	86	925.7
Balcony Area	16.5	177.6
Total Area	102.5	1103.3



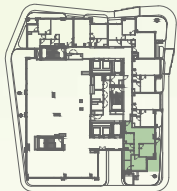
Level 02-08



## 2 BEDROOM TYPE C BALCONY 02

# Unit Plans | Residential

Name	Area (m²)	Area (ft²)
Suite Area	85.2	917.1
Balcony Area	21.57	232.2
Total Area	106.77	1149.3



Level 02-08



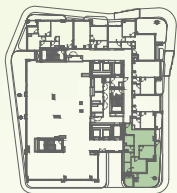
## 2 BEDROOM TYPE C

BALCONY 03

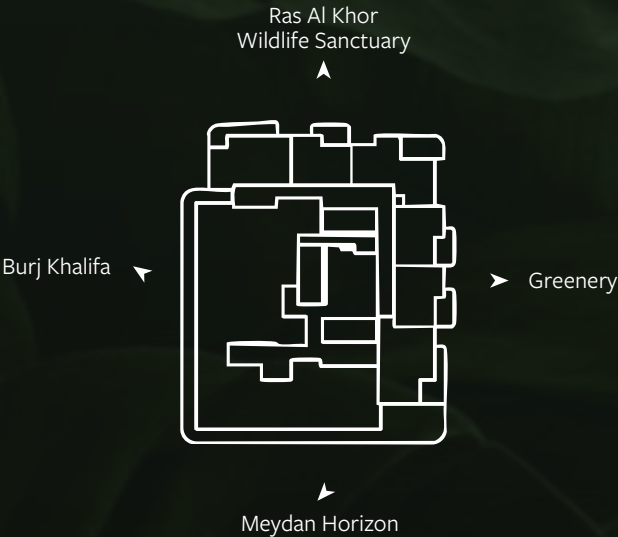


# Unit Plans | Residential

Name	Area (m²)	Area (ft²)
Suite Area	85.76	923.1
Balcony Area	76.86	827.3
Total Area	162.62	1750.4



Level 02-08



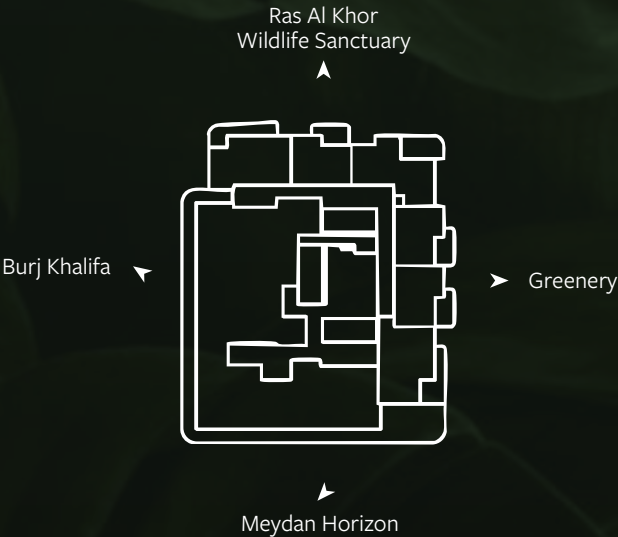
## 2 BEDROOM TYPE C

BALCONY 04



# Unit Plans | Residential

Name	Area (m²)	Area (ft²)
Suite Area	87.55	942.4
Balcony Area	54.37	585.2
Total Area	141.92	1527.6



## 2 BEDROOM TYPE C

### BALCONY 05

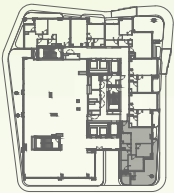


Level 02-08

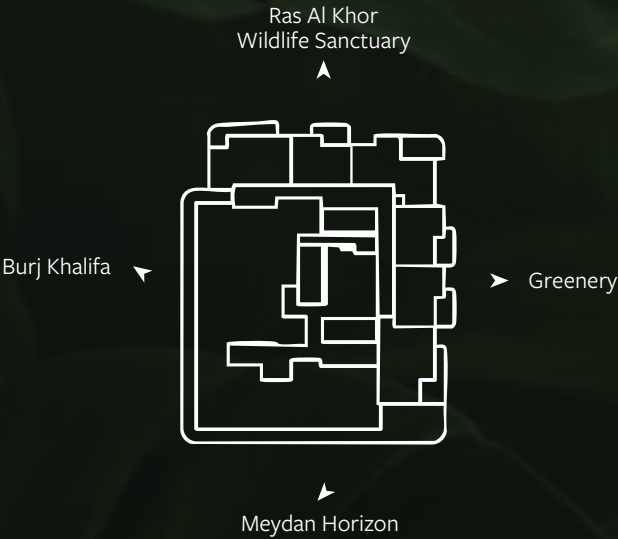
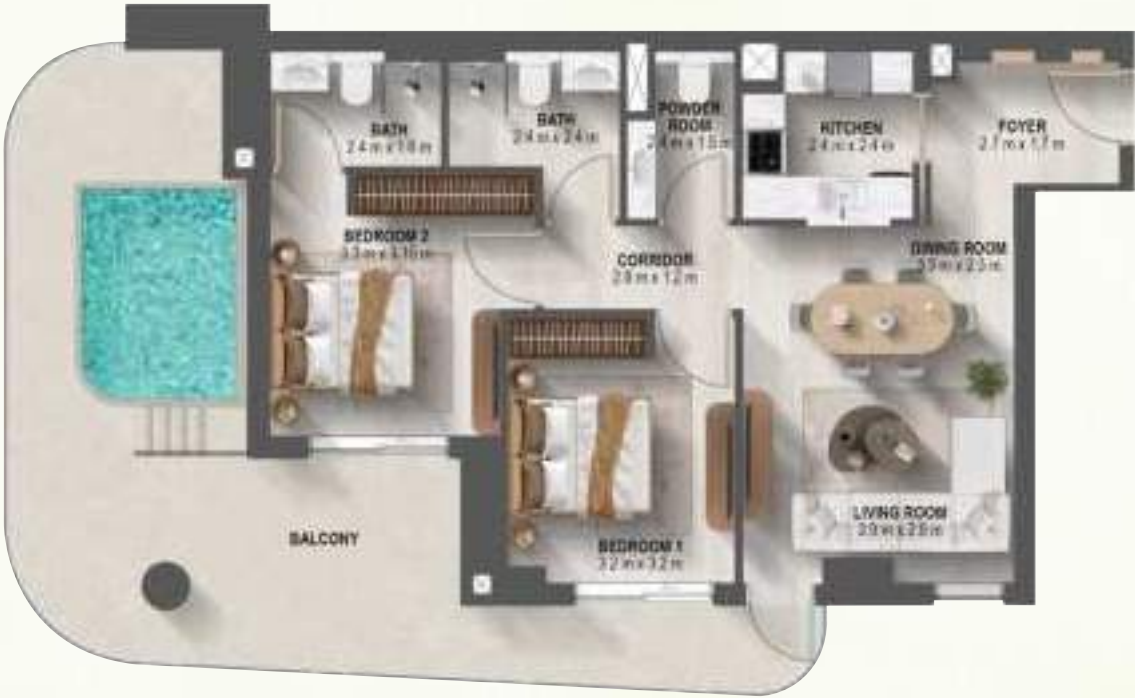


# Unit Plans | Residential

Name	Area (m²)	Area (ft²)
Suite Area	85.8	923.6
Balcony Area	46.4	499.4
Total Area	132.2	1423.0



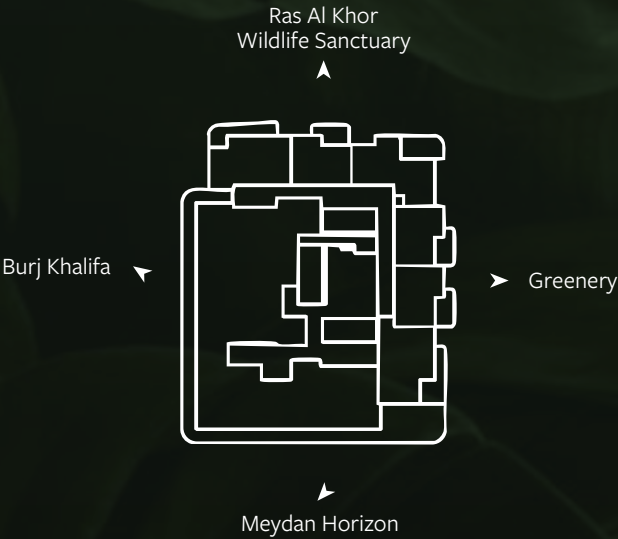
Level 02-08



## 2 BEDROOM TYPE C BALCONY 06

# Unit Plans | Residential

Name	Area (m²)	Area (ft²)
Suite Area	82.67	889.9
Balcony Area	126.51	1361.8
Total Area	209.18	2251.6



## 2 BEDROOM TYPE D

### BALCONY 01

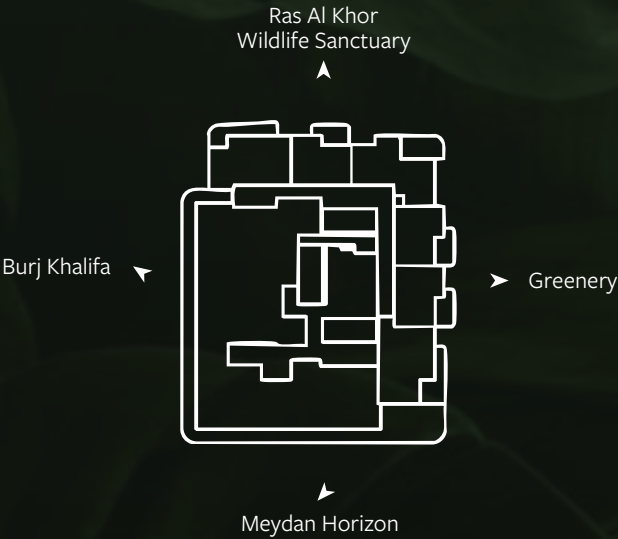


Level 10-12



# Unit Plans | Residential

Name	Area (m²)	Area (ft²)
Suite Area	83.36	897.3
Balcony Area	123.99	1334.6
Total Area	207.35	2231.9



## 2 BEDROOM TYPE D BALCONY 02



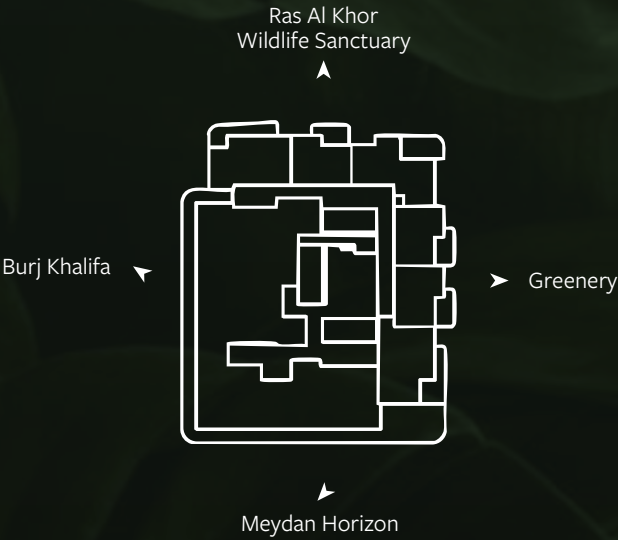
Level 10-12





# Unit Plans | Residential

Name	Area (m²)	Area (ft²)
Suite Area	83.01	893.5
Balcony Area	118.51	1275.6
Total Area	201.52	2169.2



## 2 BEDROOM TYPE D

BALCONY 03

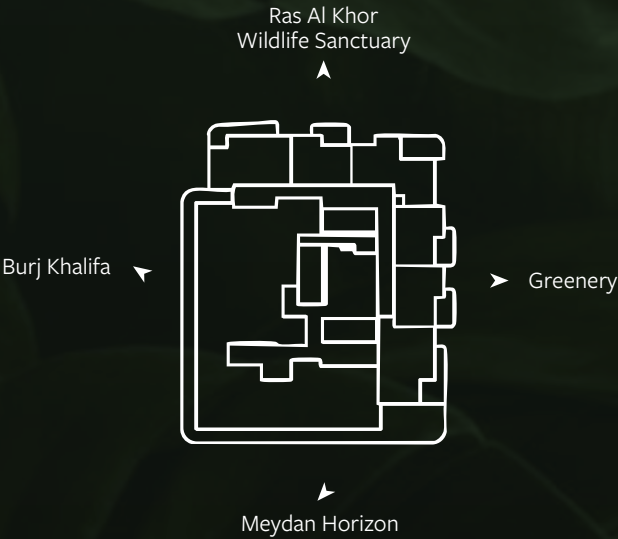


Level 10-12



# Unit Plans | Residential

Name	Area (m²)	Area (ft²)
Suite Area	81.07	872.6
Balcony Area	27.5	296.0
Total Area	108.57	1168.6



## 2 BEDROOM TYPE D

BALCONY 04

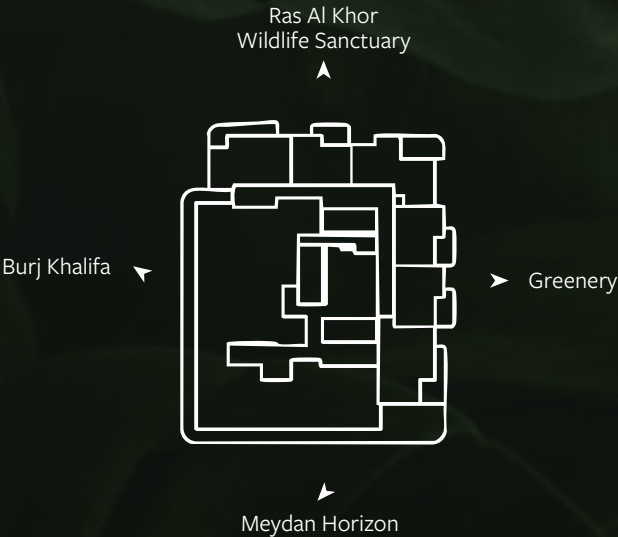


Level 13-20



# Unit Plans | Residential

Name	Area (m²)	Area (ft²)
Suite Area	81.11	873.1
Balcony Area	32.26	347.2
Total Area	113.37	1220.3

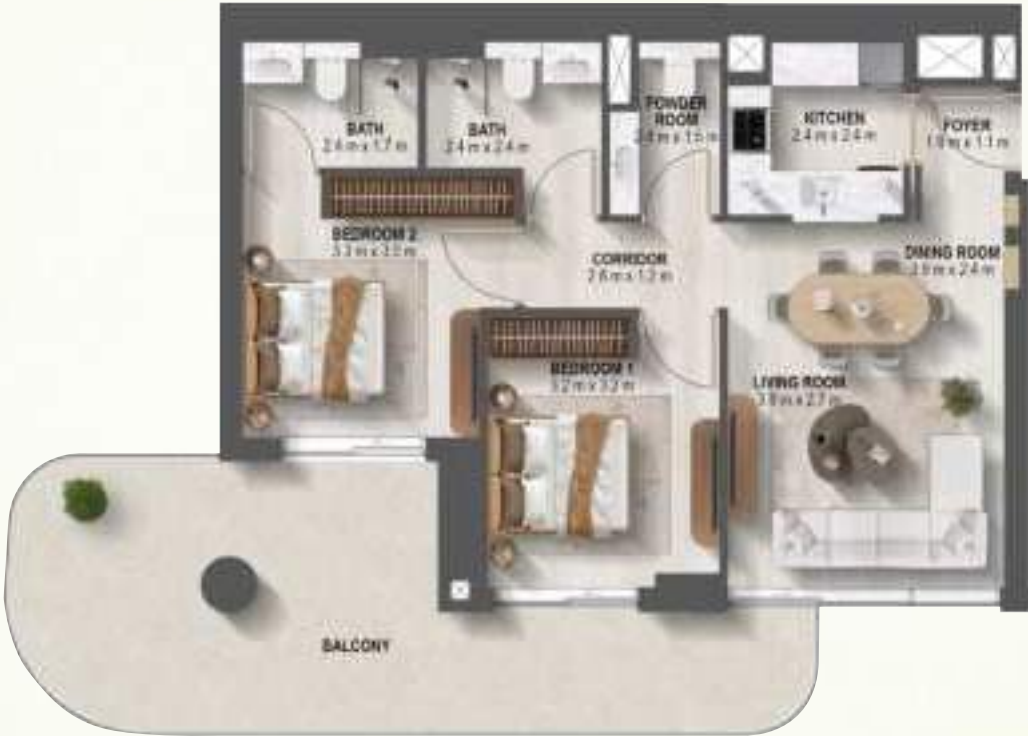


## 2 BEDROOM TYPE D

BALCONY 05

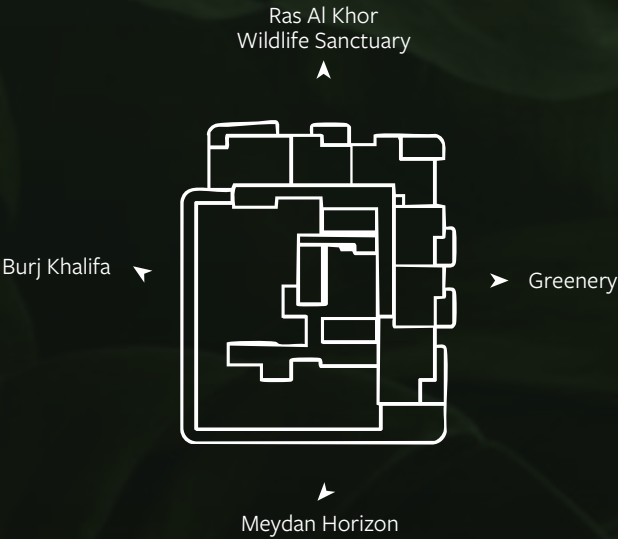


Level 13-20



# Unit Plans | Residential

Name	Area (m²)	Area (ft²)
Suite Area	135.52	1458.7
Balcony Area	56.77	611.1
Total Area	192.29	2069.8



## 3 BEDROOM TYPE A

BALCONY 01



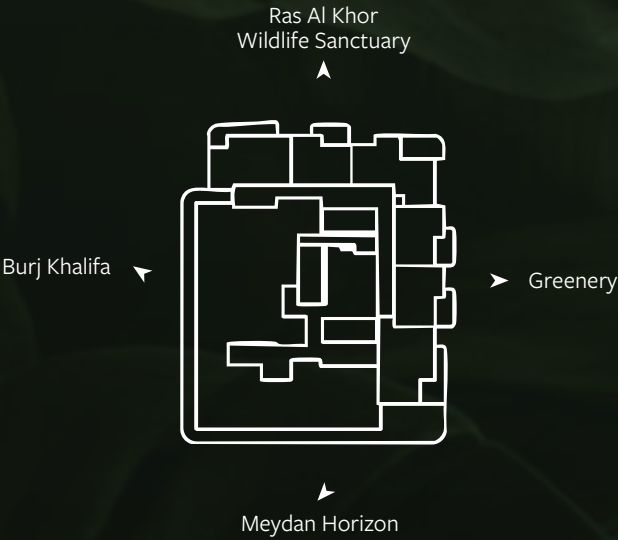
Level 13-20





# Unit Plans | Residential

Name	Area (m²)	Area (ft²)
Suite Area	135.58	1459.4
Balcony Area	58.4	628.6
Total Area	193.98	2088.0



## 3 BEDROOM TYPE A BALCONY 02



Level 13-20





# PRESTIGE ONE

DEVELOPMENTS

*The Heart of Every Location*

[prestigeone.ae](https://prestigeone.ae)



Subject to marketing T&C\*  
Scan to know more

800 PRESTIGE

All images, renderings, floor plans, layouts, and other visuals in this material are indicative artistic impressions for conceptual purposes only and do not represent actual photographs of the project or Units and is copyright of the Developer which shall not be reproduced or used without consent. Designs, finishes, colors, materials, dimensions, landscaping, amenities, and surrounding views may vary during design development or construction. Furniture, appliances, and decorative elements shown are illustrative and only included where expressly stated in the Sale and Purchase Agreement (SPA). This material does not constitute an offer, warranty, or representation beyond the specifications and obligations expressly set out in the SPA."