

Floor Plans



FASHIONZ

◇ fashiontv

by **DANUBE**

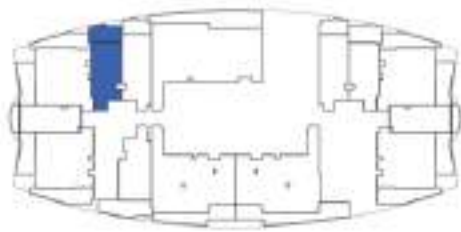
Dubai's First FashionTV Branded Residences



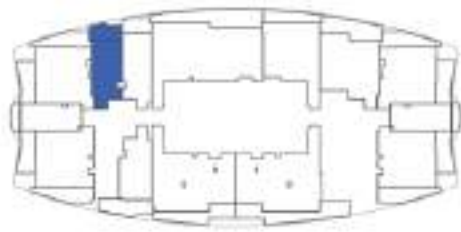




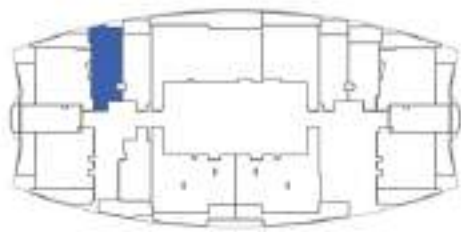
FLOOR : 21 & 47 (Typ)



FLOOR : 22 - 24 (Typ)



FLOOR : 25 - 45 & 48 - 56 (Typ)



SITE PLAN



PRESIDENTIAL STUDIO - A

AREA in Sq.Ft :

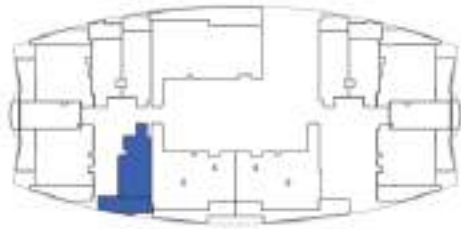
Apartment	336 to 337
Balcony	95 to 97
Total	431 to 433

UNITS :

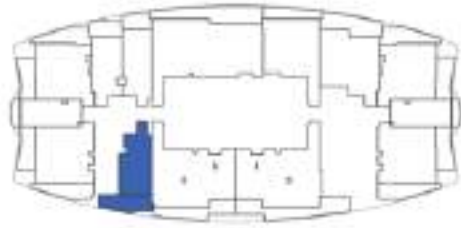
FLOOR	UNIT Nos
21 & 47 (Typ)	(2108) & (4708)
22 - 24 (Typ)	(2208) to (2408)
25 - 45 & 48 - 56 (Typ)	(2509) to (4509) & (4809) to (5609)

FEATURES : ☒ Pool

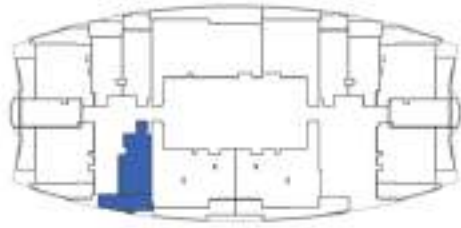
FLOOR : 21 & 47 (Typ)



FLOOR : 22 - 24 (Typ)



FLOOR : 25 - 45 & 48 - 56 (Typ)



SITE PLAN



PRESIDENTIAL STUDIO - B

AREA in Sq.Ft :

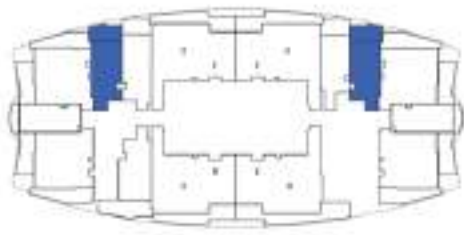
Apartment	375 to 376
Balcony	153
Total	528 to 529

UNITS :

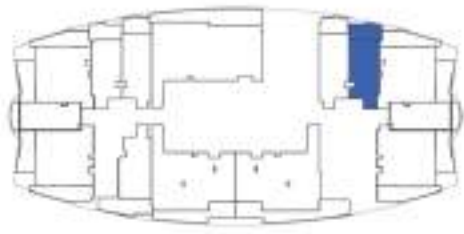
FLOOR	UNIT Nos
21 & 47 (Typ)	(2112) & (4712)
22 - 24 (Typ)	(2212) to (2412)
25 - 45 & 48 - 56 (Typ)	(2513) to (4513) & (4813) to (5613)

FEATURES : ☒ Pool

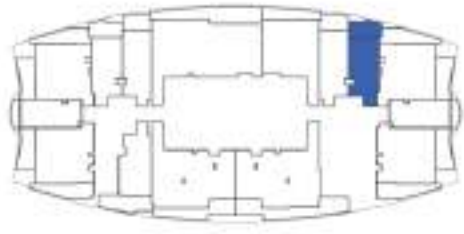
FLOOR : 2 - 19 (Typ)



FLOOR : 21 & 47 (Typ)



FLOOR : 25 - 45 & 48 - 56 (Typ)



SITE PLAN



STUDIO TYPE - A

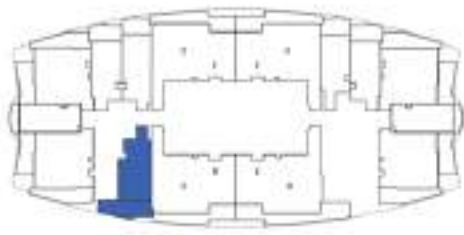
AREA in Sq.Ft :

Apartment	335 to 336
Balcony	97 to 99
Total	433 to 434

UNITS :

FLOOR	UNIT Nos
2 - 19 (Typ)	(204) (209) to (1904) (1909)
21 & 47 (Typ)	(2104) & (4704)
25 - 45 & 48 - 56 (Typ)	(2504) to (4504) & (4804) to (5604)

FLOOR : 2 - 19 (Typ)



STUDIO TYPE - B

AREA in Sq.Ft :

Apartment	376
Balcony	153
Total	529

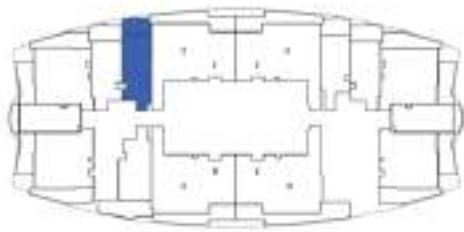
UNITS :

FLOOR	UNIT Nos
2 - 19 (Typ)	(213) to (1913)

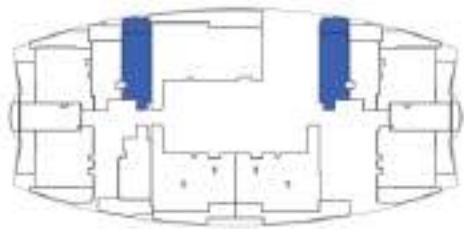
SITE PLAN



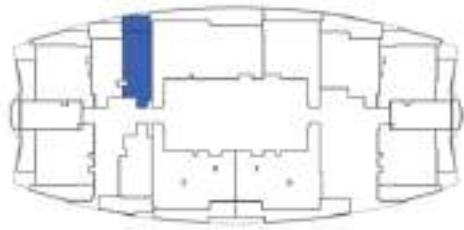
FLOOR : 2 - 19 (Typ)



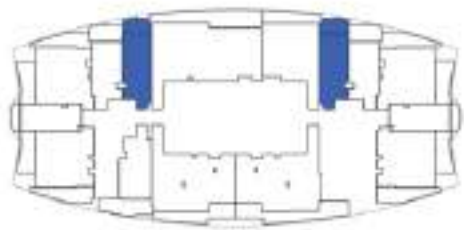
FLOOR : 21 & 47 (Typ)



FLOOR : 22 - 24 (Typ)



FLOOR : 25 - 45 & 48 - 56 (Typ)



SITE PLAN



EXECUTIVE STUDIO - C

AREA in Sq.Ft :

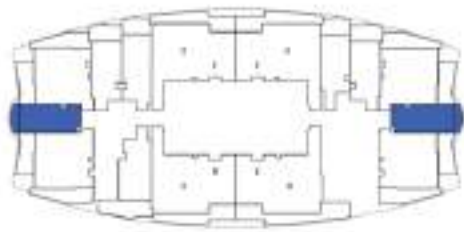
Apartment	377 to 378
Balcony	80 to 82
Total	457 to 460

UNITS:

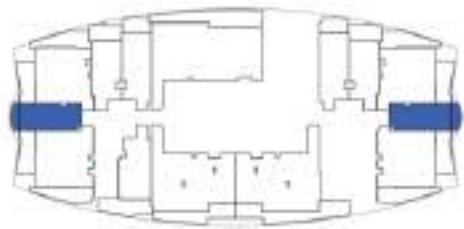
FLOOR	UNIT Nos
2 - 19 (Typ)	(208) to (1908)
21 & 47 (Typ)	(2105) (2107) & (4705) (4707)
22 - 24 (Typ)	(2207) to (2407)
25 - 45 & 48 - 56 (Typ)	(2505) (2508) to (4505) (4508) & (4805) (4808) to (5605) (5608)

FEATURES : ☒ Convertible 1 BHK

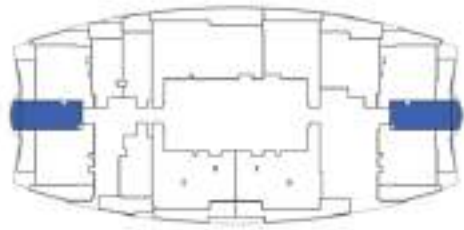
FLOOR : 2 - 19 (Typ)



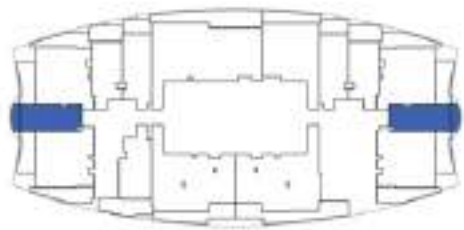
FLOOR : 21 & 47 (Typ)



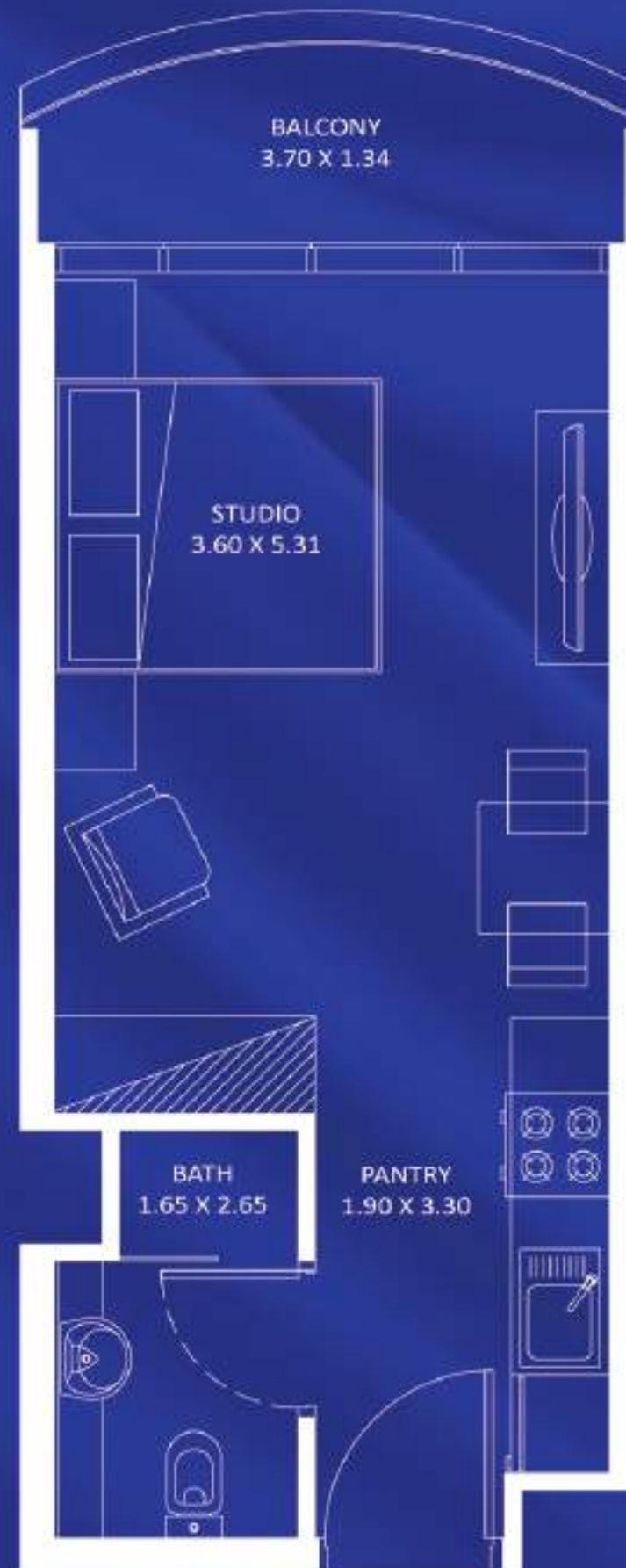
FLOOR : 22 - 24 (Typ)



FLOOR : 25 - 45 & 48 - 56 (Typ)



SITE PLAN



STUDIO TYPE - D

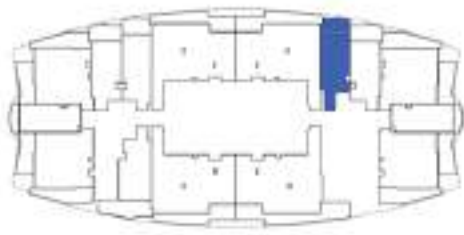
AREA in Sq.Ft :

Apartment	303
Balcony	44
Total	347

UNITS :

FLOOR	UNIT Nos
2 - 19 (Typ)	(202) (211) to (1902) (1911)
21 & 47 (Typ)	(2102) (2110) & (4702) (4710)
22 - 24 (Typ)	(2202) (2210) to (2402) (2410)
25 - 45 & 48 - 56 (Typ)	(2502) (2511) to (4502) (4511) & (4802) (4811) to (5602) (5611)

FLOOR : 2 - 19 (Typ)



SITE PLAN



STUDIO TYPE - E

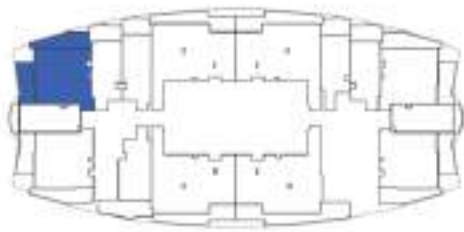
AREA in Sq.Ft :

Apartment	344
Balcony	81
Total	425

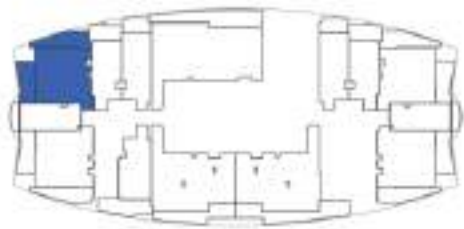
UNITS :

FLOOR	UNIT Nos
2 - 19 (Typ)	(205) to (1905)

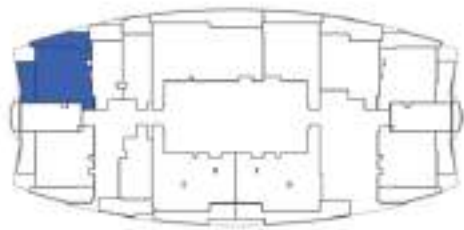
FLOOR : 2 - 19 (Typ)



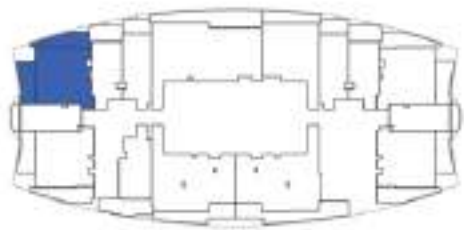
FLOOR : 21 & 47 (Typ)



FLOOR : 22 - 24 (Typ)



FLOOR : 25 - 45 & 48 - 56 (Typ)



SITE PLAN



PRESIDENTIAL SUITE

AREA in Sq.Ft :

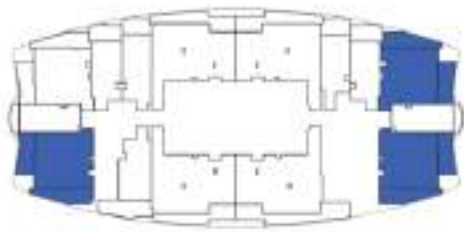
Apartment	596
Balcony	250 to 252
Total	846 to 848

UNITS:

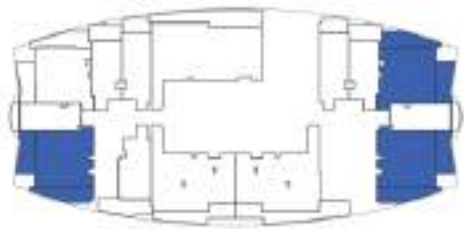
FLOOR	UNIT Nos
2 - 19 (Typ)	(210) to (1910)
21 & 47 (Typ)	(2109) & (4709)
22 - 24 (Typ)	(2209) to (2409)
25 - 45 & 48 - 56 (Typ)	(2510) to (4510) & (4810) to (5610)

FEATURES : ☒ Pool ☒ Office

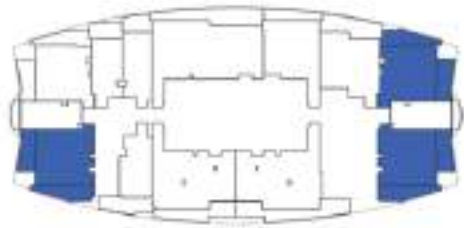
FLOOR : 2 - 19 (Typ)



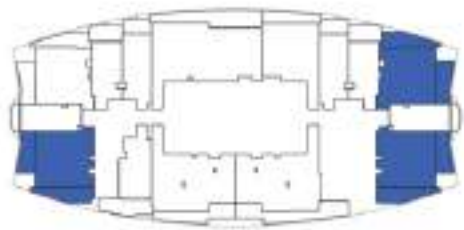
FLOOR : 21 & 47 (Typ)



FLOOR : 22 - 24 (Typ)



FLOOR : 25 - 45 & 48 - 56 (Typ)



SITE PLAN



1 BEDROOM TYPE - A

AREA in Sq.Ft :

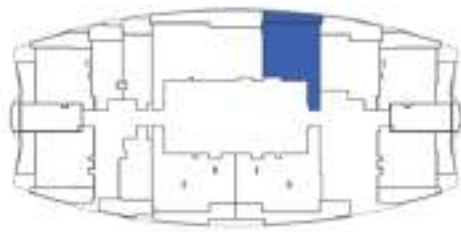
Apartment	596 to 610
Balcony	253 to 264
Total	849 to 873

UNITS:

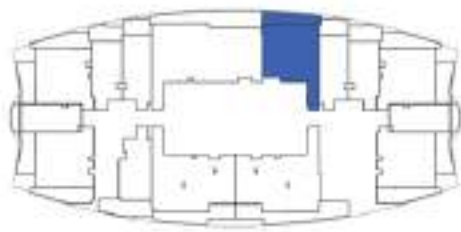
FLOOR	UNIT Nos
2 - 19 (Typ)	(201) (203) (212) to (1901) (1903) (1912)
21 & 47 (Typ)	(2101) (2103) (2111) & (4701) (4703) (4711)
22 - 24 (Typ)	(2201) (2203) (2211) to (2401) (2403) (2411)
25 - 45 & 48 - 56 (Typ)	(2501) (2503) (2512) to (4501) (4503) (4512) & (4801) (4803) (4812) to (5601) (5603) (5612)

FEATURES : ☒ Office

FLOOR : 22 - 24 (Typ)



FLOOR : 25 - 45 & 48 - 56 (Typ)



SITE PLAN



1 BEDROOM TYPE - B

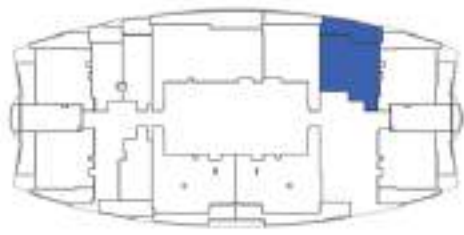
AREA in Sq.Ft :

Apartment	647 to 649
Balcony	110 to 112
Total	759

UNITS:

FLOOR	UNIT Nos
22 - 24 (Typ)	(2205) to (2405)
25 - 45 & 48 - 56 (Typ)	(2506) to (4506) & (4806) to (5606)

FLOOR : 22 - 24 (Typ)



1 BEDROOM TYPE - C

AREA in Sq.Ft :

Apartment	654
Balcony	193
Total	847

UNITS:

FLOOR	UNIT Nos
22 - 24 (Typ)	(2204) to (2404)

FEATURES : ☒ Pool

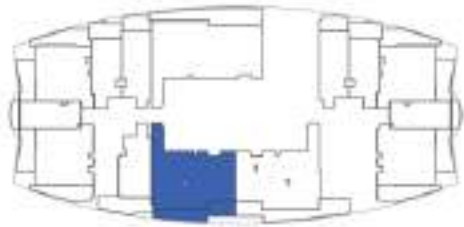
SITE PLAN



FLOOR : 2 - 19 (Typ)



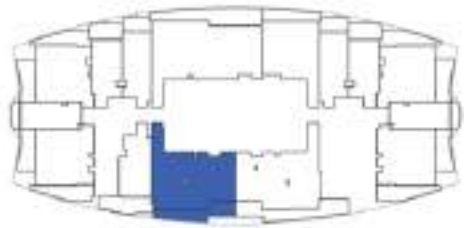
FLOOR : 21 & 47 (Typ)



FLOOR : 22 - 24 (Typ)



FLOOR : 25 - 45 & 48 - 56 (Typ)



SITE PLAN



2 BEDROOM TYPE - A

AREA in Sq.Ft :

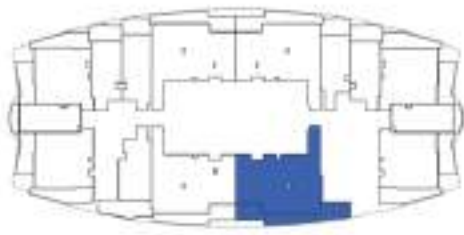
Apartment	891 to 894
Balcony	177 to 186
Total	1,070 to 1,078

UNITS:

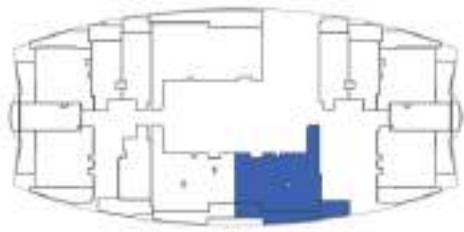
FLOOR	UNIT Nos
2 - 19 (Typ)	(206 - 207) (214) to (1906 - 1907) (1914)
21 & 47 (Typ)	(2113) & (4713)
22 - 24 (Typ)	(2213) to (2413)
25 - 45 & 48 - 56 (Typ)	(2514) to (4514) & (4814) to (5614)

FEATURES : ☒ Pool

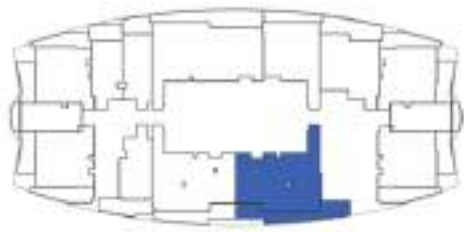
FLOOR : 2 - 19 (Typ)



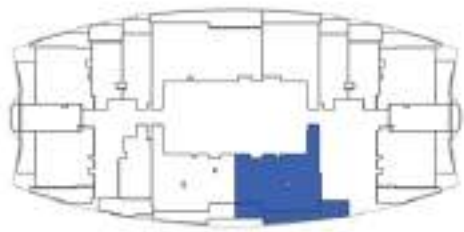
FLOOR : 21 & 47 (Typ)



FLOOR : 22 - 24 (Typ)



FLOOR : 25 - 45 & 48 - 56 (Typ)



SITE PLAN



2 BEDROOM TYPE - B



AREA in Sq.Ft :

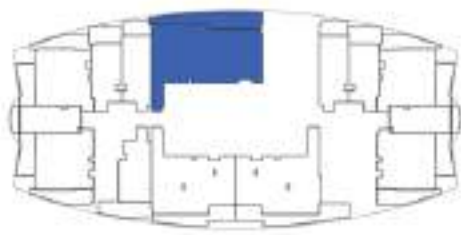
Apartment	902 to 907
Balcony	271 to 274
Total	1,176 to 1,177

UNITS:

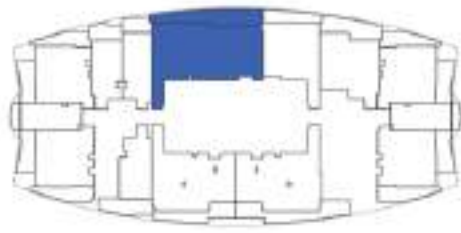
FLOOR	UNIT Nos
2 - 19 (Typ)	(215) to (1915)
21 & 47 (Typ)	(2114) & (4714)
22 - 24 (Typ)	(2214) to (2414)
25 - 45 & 48 - 56 (Typ)	(2515) to (4515) & (4815) to (5615)

FEATURES : ☒ Pool

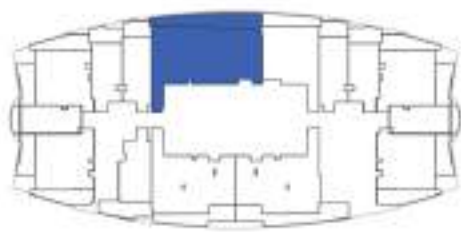
FLOOR : 21 & 47 (Typ)



FLOOR : 22 - 24 (Typ)



FLOOR : 25 - 45 & 48 - 56 (Typ)



SITE PLAN



3 BEDROOM TYPE - A



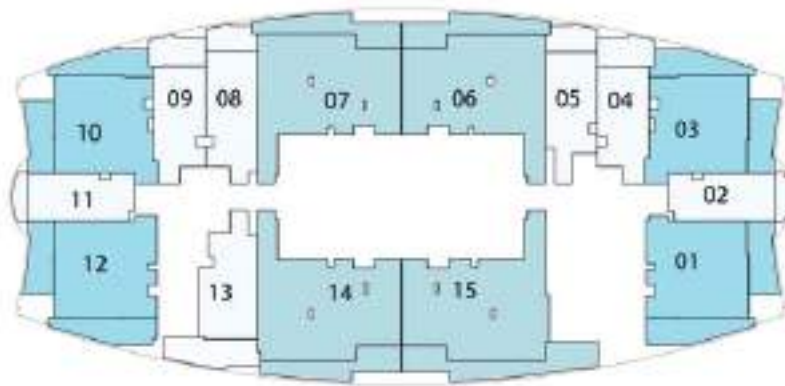
AREA in Sq.Ft :

Apartment	1,188
Balcony	280 to 284
Total	1,468 to 1,472

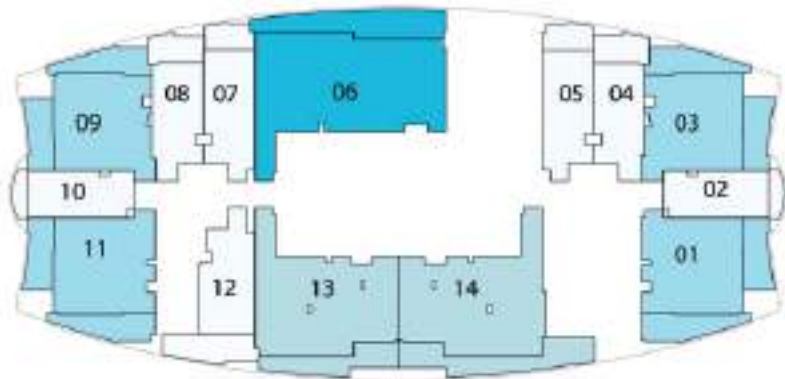
FEATURES : ☒ Pool ☒ Maid Room

UNITS :

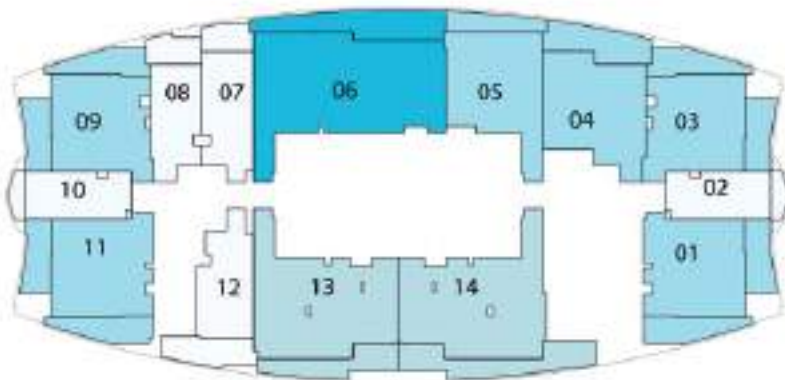
FLOOR	UNIT Nos
21 & 47 (Typ)	(2106) & (4706)
22 - 24 (Typ)	(2206) to (2406)
25 - 45 & 48 - 56 (Typ)	(2507) to (4507) & (4807) to (5607)



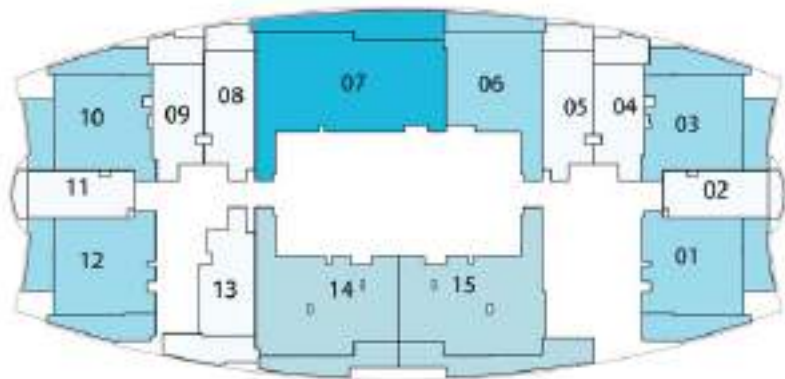
2- 19 (TYP) FLOOR



21 & 47 (TYP) FLOOR



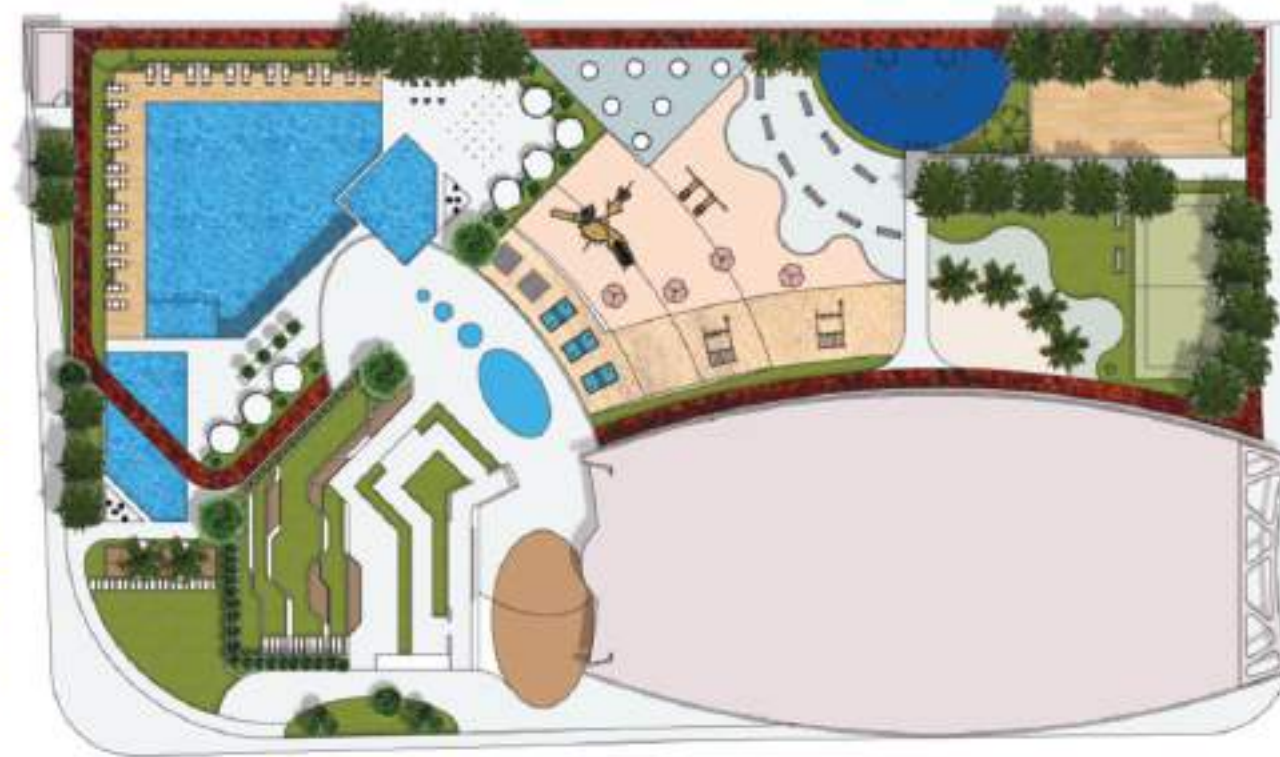
22 - 24 (TYP) FLOOR



25 - 45 & 48 - 56 (TYP) FLOOR



PANAROMIC AMENITY VIEW



COMMUNITY VIEW

BAYSIDE VIEW

CITY VIEW

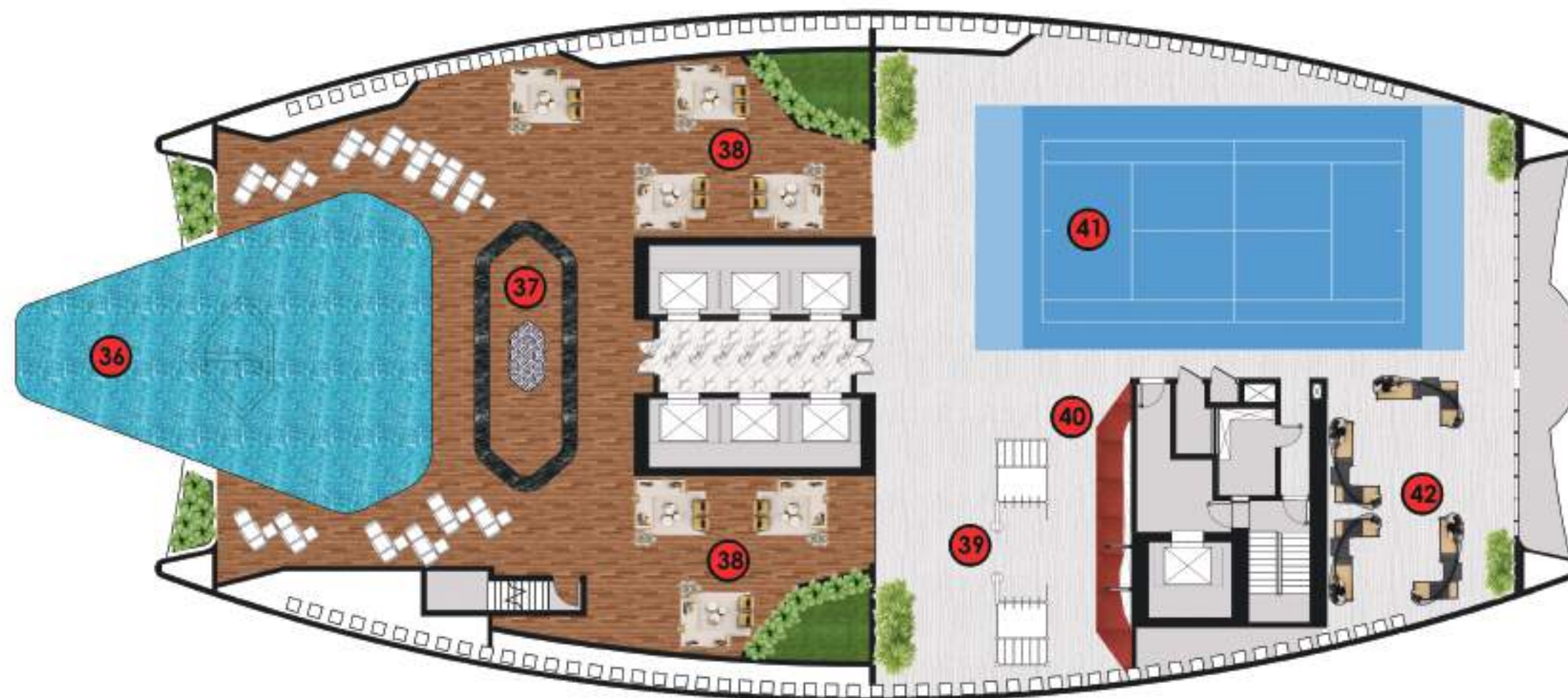
- STUDIO
- 1 BEDROOM
- 2 BEDROOM
- 3 BEDROOM

LEGEND

1. Swimming Pool
2. Kids Pool
3. Jacuzzi
4. Aquatic Gym
5. Outdoor Fashion Gym
6. Trampoline Park
7. Pool Deck
8. Kids Splash Pad
9. Kids Play Area
10. Table Tennis Zone
11. Jogging Track
12. Chess Board Area
13. Badminton Court
14. Multi Purpose Court
15. Skating Park
16. Meditation Zone
17. Fashion Plaza
18. Japanese Garden
19. Outdoor Party Area
20. Party Hall Area
21. Outdoor Cinema
22. Fashion Ramp
23. BBQ Area
24. Zumba & Dance Studio
25. Snooker Zone
26. Fashion Gym
27. Open Cigar Zone
28. Spa & Therapy
29. Doctor on Call
30. Fashion School
31. Kids Day Care
32. Business Center
33. Fashion Library
34. Beauty Parlour
35. Gazebo



HEALTH CLUB LEVEL

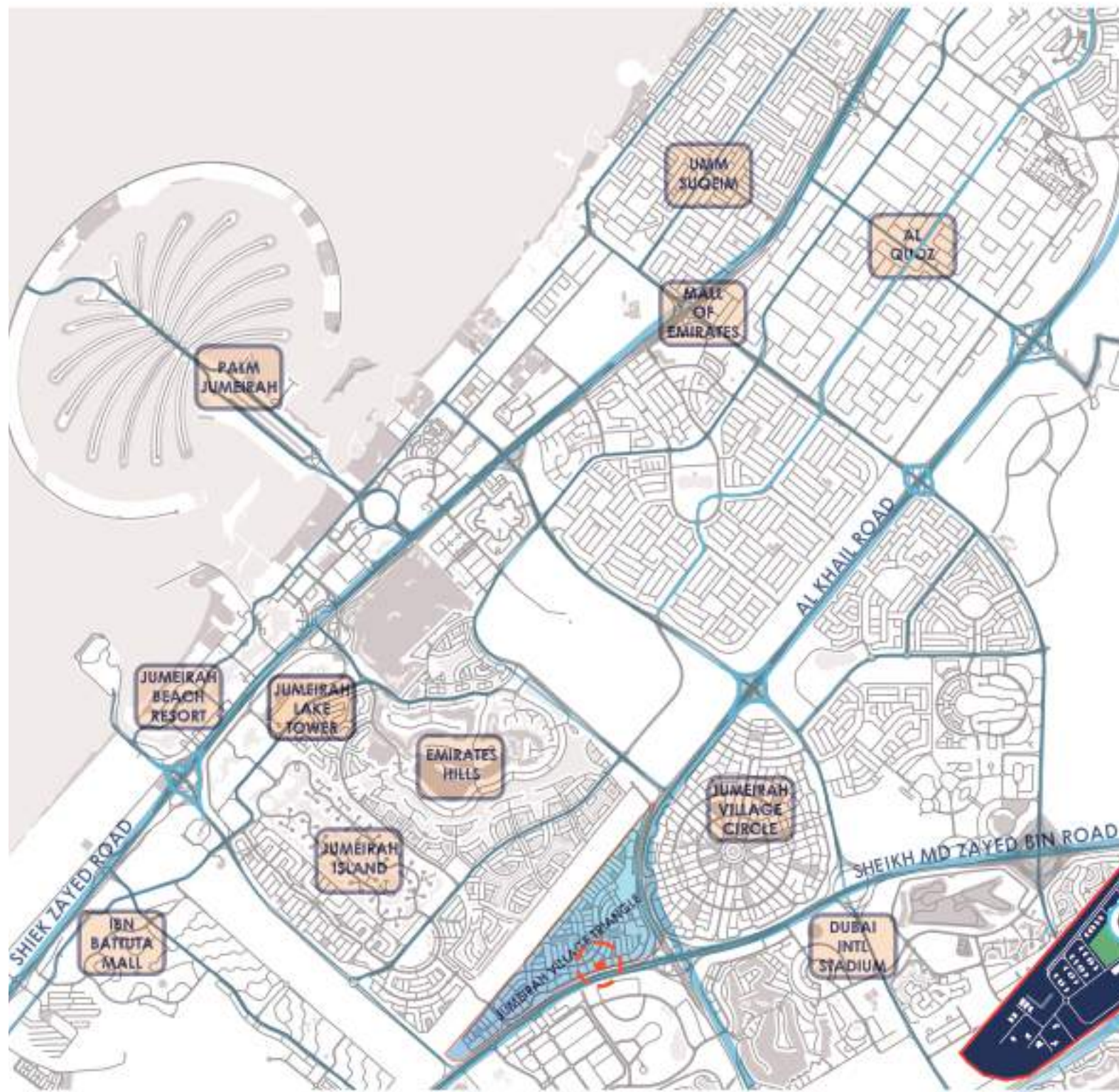


LEGEND

- 36. Roof Top Infinity Pool
- 37. Health Bar
- 38. Rooftop Lounge
- 39. Outdoor Gym
- 40. Rock Climbing Wall
- 41. Padel Court
- 42. Viewing Deck

ROOF HEALTH CLUB LEVEL

1. All information, materials, plans and amenities are approximate and provided for illustrative purposes only. The developer reserves the right to make revisions to the floor plans and any features, materials, dimensions, drawings, and amenities of the project without notice.
2. Units areas, actual dimensions, layout, location, specifications of balcony, door, wardrobe or other fixtures may vary floor to floor and between units and are subject to revision by the developer.
3. Furniture and electric devices will not be provided by the developer, unless specified otherwise in the Unit Sale Purchase Agreement.



JVT OVERVIEW







Dubai | Abu Dhabi | Muscat | Riyadh | Bahrain
Mumbai | New Delhi | Ahmedabad | Kochi | China

 **+971 800 57 57**

 **danubeproperties.ae**

 **info@danubeproperties.ae**

1. All Information, materials, plans and amenities are approximate and provided for illustrative purposes only. The developer reserves the right to make revisions to the floor plans and any features, materials, dimensions, drawings, and amenities of the project without notice.
2. Units areas, actual dimensions, layout, location, specifications of balcony, door, wardrobe or other fixtures may vary floor to floor and between units and are subject to revision by the developer.
3. Furniture and electric devices will not be provided by the developer, unless specified otherwise in the Unit Sale Purchase Agreement.