

SAMANA  
OCEAN CREST



A SYMPHONY BY THE SEA

# SAMANA

DEVELOPERS

## WHERE PURPOSE SHAPES EVERY SPACE

SAMANA's legacy is rooted in a singular vision—to craft environments that elevate everyday life. Over three decades, we've transformed that vision into a portfolio of communities that stand as benchmarks of design, purpose, and aspiration.

From idea to execution, we pursue progress with intention and purpose, fusing innovation, aesthetic clarity, and community thinking into every development. The result is more than architecture. It's a curation of refined lifestyles that inspire, endure, and lead the way forward.

Where Complete Control  
*Meets* Timeless Quality

SAMANA's end-to-end integration means no detail is outsourced, ensuring absolute control over timelines, costs, and uncompromised luxury.



#### DESIGN & PLANNING

Visionary concepts  
engineered for reality.

#### ENGINEERING & CONSTRUCTION

Structural artistry meets  
technical brilliance.

#### PROCUREMENT

Utilizing cutting-edge platforms  
streamline sourcing and ensure  
unmatched consistency.

#### QUALITY CONTROL

Precision-led systems that track,  
review, and deliver quality.

#### CUSTOMER EXPERIENCE

End-to-end service with  
precision and care.



## FIVE ISLES OF WATERFRONT LUXURY

Set against the shimmering coastline of Dubai, Dubai Islands is an extraordinary waterfront destination that blends luxury, leisure, and lifestyle. This iconic master community offers pristine beaches, world-class hospitality, vibrant retail experiences, and exceptional connectivity — creating a destination where every moment feels like a getaway.

## DUBAI ISLANDS

5

Interconnected  
Islands

86+

Resorts &  
Hotels

21KMS

Spread-out  
Beaches



Golf Courses



Shopping Malls



Healthcare Facilities



## SAMANA OCEAN CREST





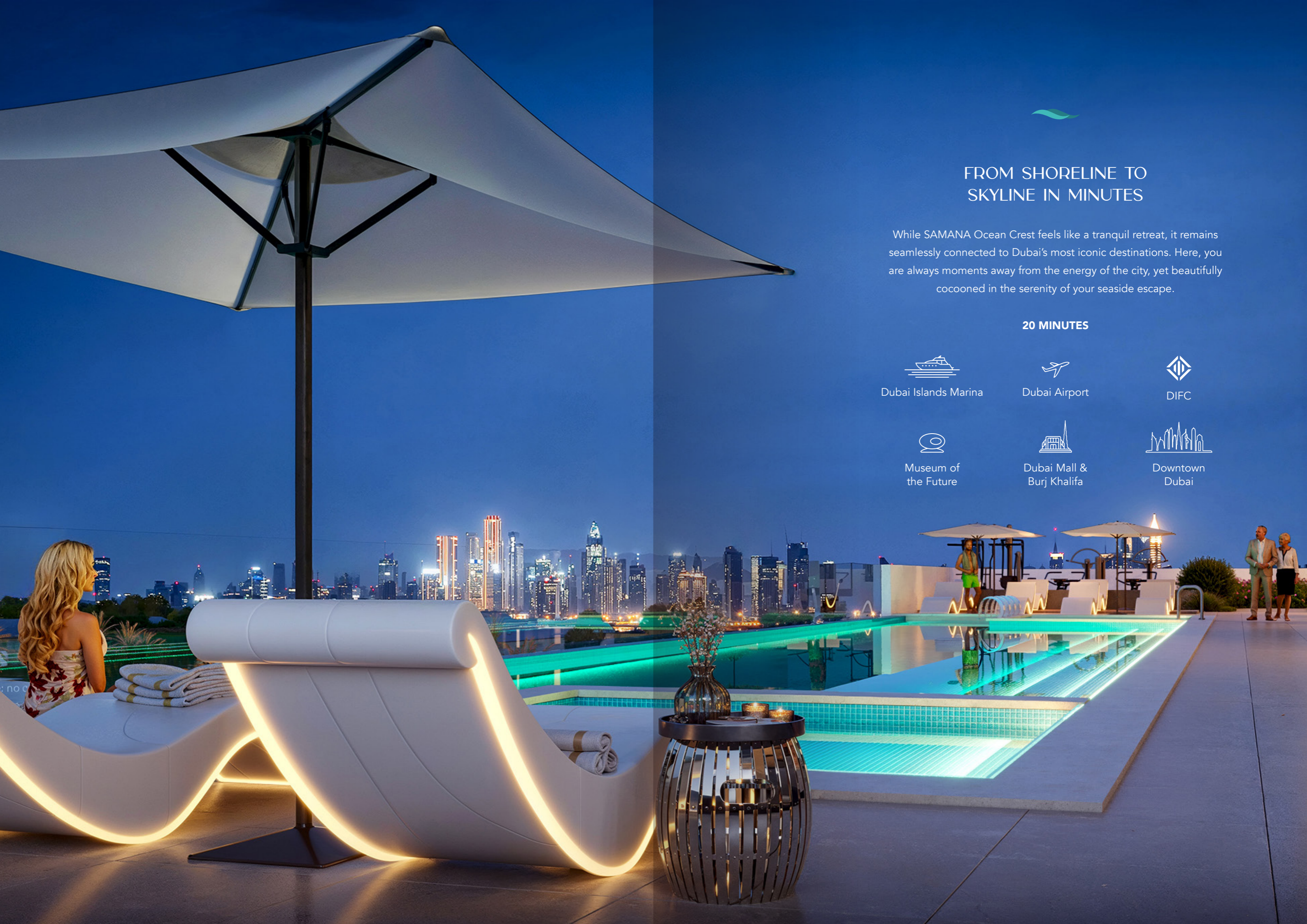
SAMANA  
OCEAN CREST

A SYMPHONY BY THE SEA





SAMANA Ocean Crest welcomes you to a sanctuary where sea breezes soothe the spirit and immaculate design revives the soul. Tucked within the iconic Dubai Islands, this exclusive retreat brings the rhythm of the ocean to your doorstep. From curated interiors to panoramic views, every space whispers refinement—and every day feels like an escape.



## FROM SHORELINE TO SKYLINE IN MINUTES

While SAMANA Ocean Crest feels like a tranquil retreat, it remains seamlessly connected to Dubai's most iconic destinations. Here, you are always moments away from the energy of the city, yet beautifully cocooned in the serenity of your seaside escape.

### 20 MINUTES



Dubai Islands Marina



Dubai Airport



DIFC




Museum of the Future



Dubai Mall & Burj Khalifa



Downtown Dubai



## WHERE THE SEA LEADS YOU HOME

SAMANA Ocean Crest is a serene expression of waterfront living. This coastal address blends architectural grace with breathtaking surroundings — where every view opens to the calm of the Arabian Gulf and every breeze carries the spirit of retreat. This location is not just picturesque; it is purposeful, private, prestigious, and offers a sense of poetic escape.





## A SILHOUETTE INSPIRED BY THE SEA

Inspired by the gentle movement of the sea and sculpted with intention, SAMANA Ocean Crest presents a bold yet graceful architectural identity. Clean lines and layered textures come together in a composition that reflects its coastal surroundings. With only 56 residences, SAMANA Ocean Crest offers a rare sense of privacy in an emerging island destination, where contemporary design rises in harmony with the horizon.



## ELEGANCE IN EVERY DETAIL

Here, luxury is expressed in the quietest of ways—through soft textures, intelligent layouts, and finishes chosen not just for their elegance, but for how they make you feel. This is not just a home, but an experience crafted for those who appreciate grace in the details and calm in the everyday.









## A LIFESTYLE CURATED AROUND YOU

At SAMANA Ocean Crest, amenities are more than just conveniences. Every space is designed to promote balance and connection, offering moments of movement and stillness, energy and ease.

## IMMERSED IN LEISURE

Leisure water lounge

Children's splash pad

Infinity Pool

Kids' Pool

Jacuzzi

Outdoor Shower

## WELLNESS IN MOTION

Kids' Play Area

Outdoor Gym

Indoor Gym

Jogging Track

## RETREAT INTO CALM

Steam

Sauna

## SOCIAL CORNERS

BBQ

Sun deck

Shaded seating









## SPACES SHAPED BY LIGHT AND FLOW

Carefully curated to reflect the elegance of coastal living, each residence offers a refined sense of space and functionality. Intelligent layouts, clean design language, and fluid transitions between living areas create an atmosphere that feels calm, spacious, and beautifully connected.

# SAMANA

DEVELOPERS



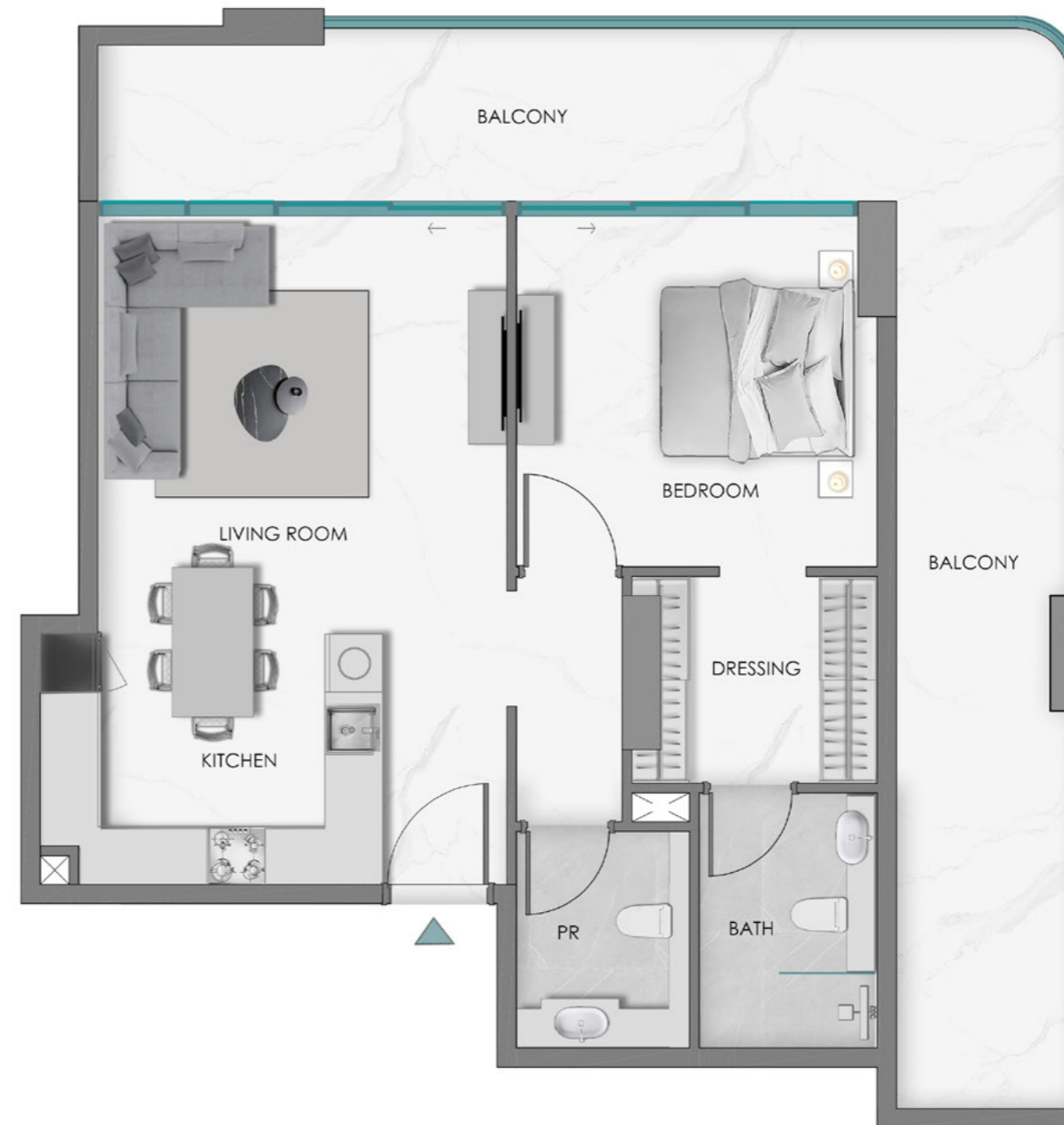
## 1 BEDROOM



PODIUM 1ST FLOOR KEYPLAN  
UNIT - P101, P102



PODIUM 2ND FLOOR KEYPLAN  
UNIT - P201, P202



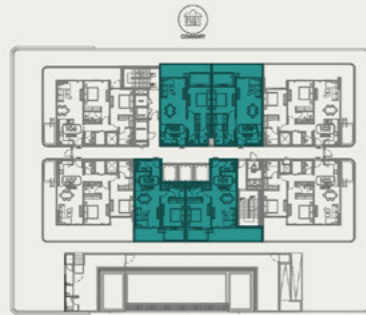
**Disclaimer:**  
1. All room dimensions are measured to structural elements and exclude wall finishes and construction tolerances.  
2. All dimensions have been provided by our consultant architects.  
3. All materials, dimensions and drawings are approximate. Information is subject to change without notice.  
4. Actual suite area may vary from the stated area. Drawings not to scale. The developer reserves the right to make revisions.  
5. For each unit type, unit sizes and details might be slightly different. Please refer to the sales and purchase agreement for the actual size of each specific unit.  
6. North direction as per the Keyplan

# SAMANA

DEVELOPERS



## 1 BEDROOM + POOL



1ST FLOOR KEYPLAN  
UNIT - 101, 104, 105, 108



2ND - 4TH TYPICAL FLOOR KEYPLAN  
UNIT - 201, 208, 301, 308, 401, 408,



7TH FLOOR KEYPLAN  
UNIT - 704



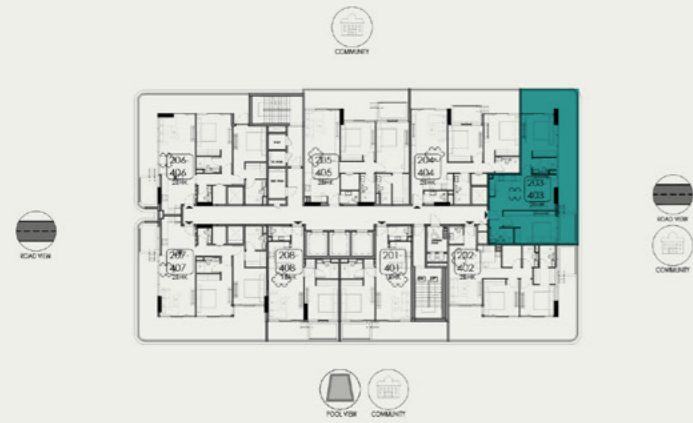
8TH FLOOR KEYPLAN  
UNIT - 803



**Disclaimer:**  
1. All room dimensions are measured to structural elements and exclude wall finishes and construction tolerances.  
2. All dimensions have been provided by our consultant architects.  
3. All materials, dimensions and drawings are approximate. Information is subject to change without notice.  
4. Actual suite area may vary from the stated area. Drawings not to scale. The developer reserves the right to make revisions.  
5. For each unit type, unit sizes and details might be slightly different. Please refer to the sales and purchase agreement for the actual size of each specific unit.  
6. North direction as per the Keyplan



## 2 BEDROOM + POOL (TYPE 1)



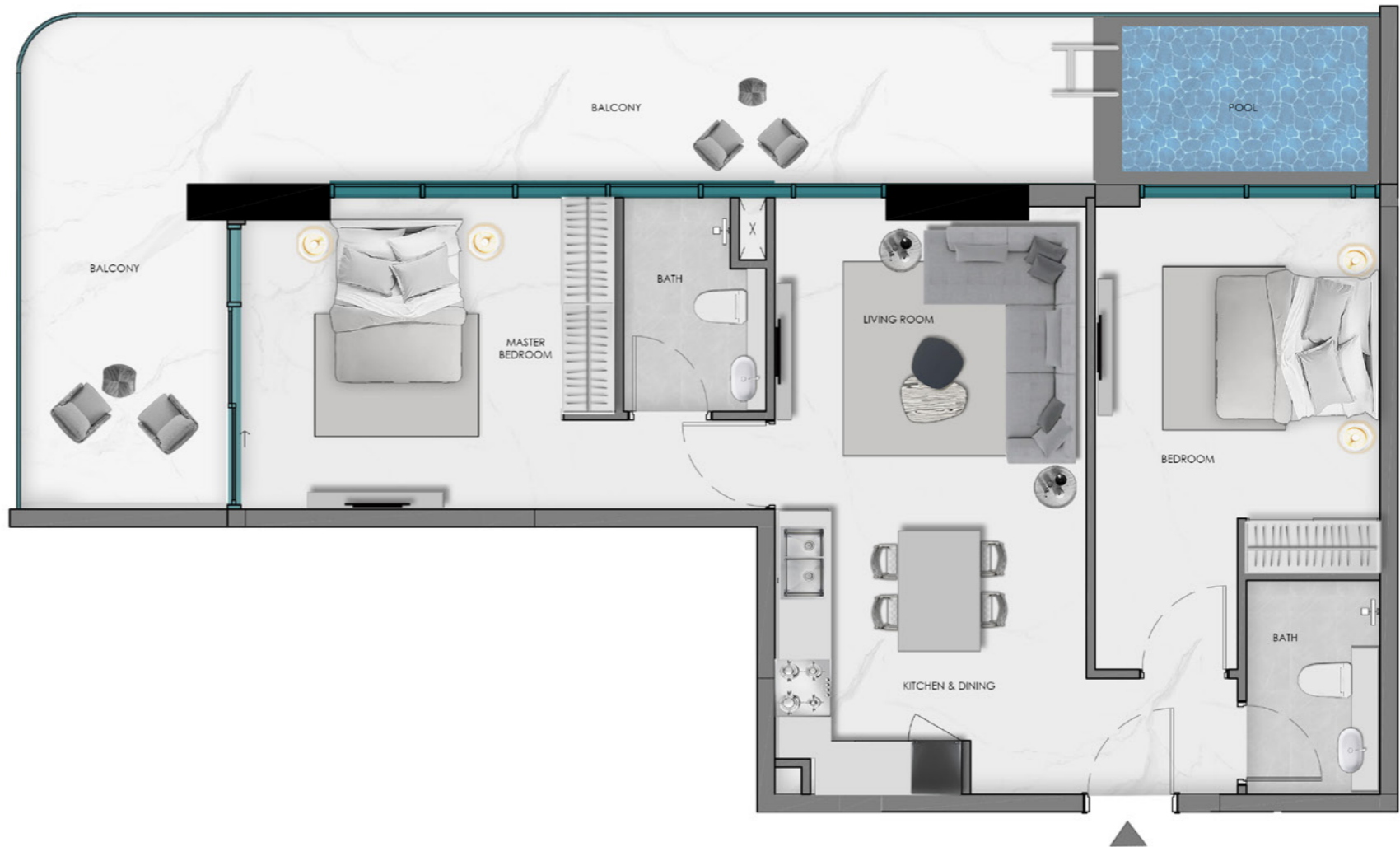
2ND TO 4TH TYPICAL FLOOR KEYPLAN

UNIT - 203, 303, 403



5TH & 6TH TYPICAL FLOOR KEYPLAN

UNIT - 503, 603

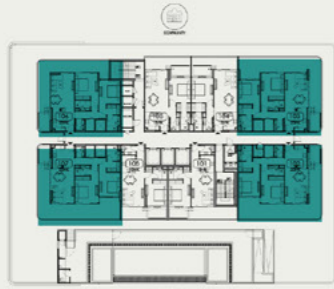


**Disclaimer:**  
 1. All room dimensions are measured to structural elements and exclude wall finishes and construction tolerances.  
 2. All dimensions have been provided by our consultant architects.  
 3. All materials, dimensions and drawings are approximate. Information is subject to change without notice.  
 4. Actual suite area may vary from the stated area. Drawings not to scale. The developer reserves the right to make revisions.  
 5. For each unit type, unit sizes and details might be slightly different. Please refer to the sales and purchase agreement for the actual size of each specific unit.  
 6. North direction as per the Keyplan

# SAMANA

DEVELOPERS

## 2 BEDROOM + STORE + POOL (TYPE 2)



1ST FLOOR KEYPLAN  
UNIT - 102, 103, 106, 107



2ND TO 4TH TYPICAL FLOOR KEYPLAN  
UNIT - 202, 204, 205, 206, 207, 302, 304, 305, 306, 307, 402, 404,  
405, 406, 407



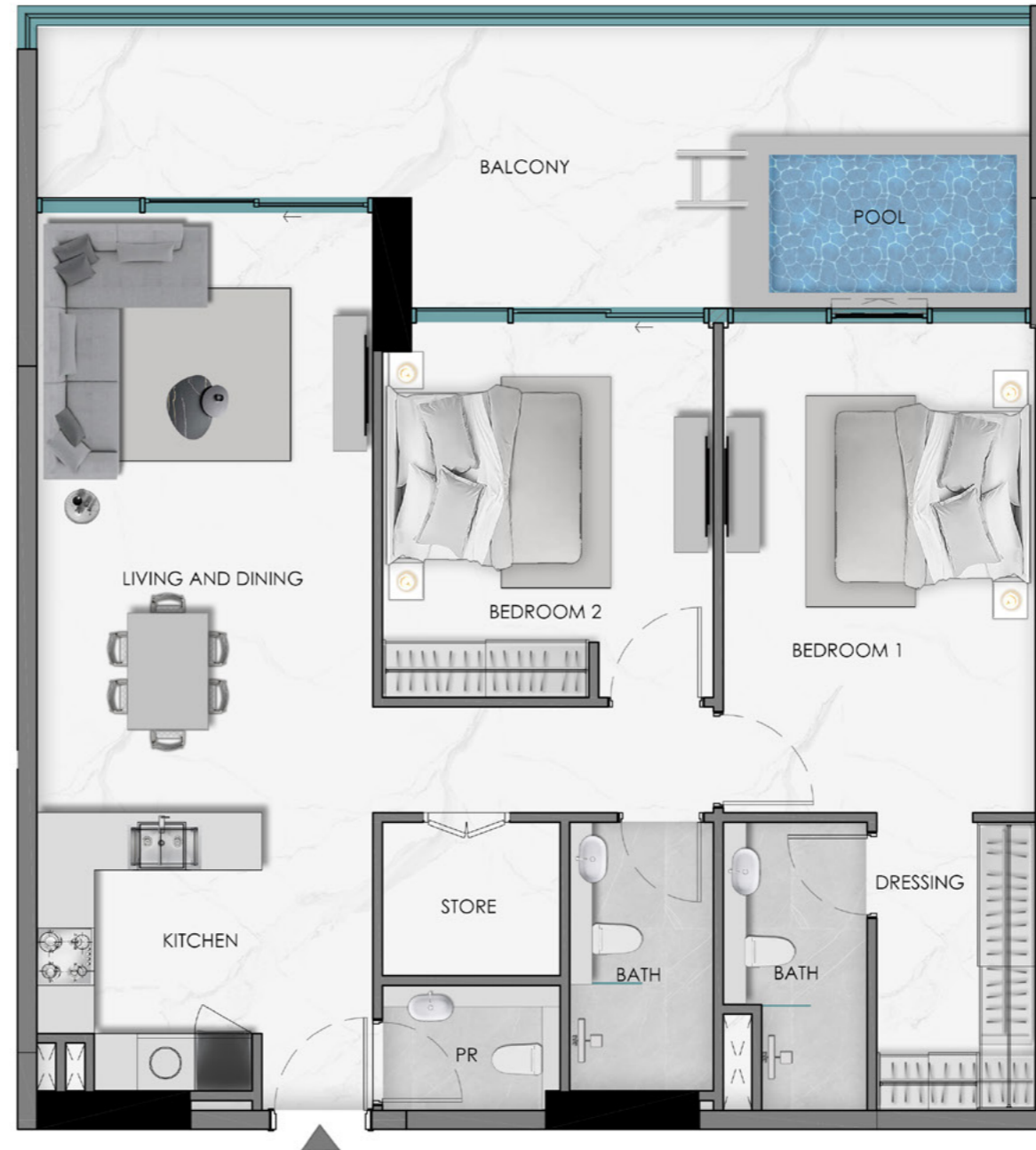
5TH & 6TH TYPICAL FLOOR KEYPLAN  
UNIT - 501, 502, 504, 505, 506, 601, 602, 604, 605, 606



7TH FLOOR KEYPLAN  
UNIT - 701, 702, 703, 705, 706



8TH FLOOR KEYPLAN  
UNIT - 801, 804, 805



**Disclaimer:**  
 1. All room dimensions are measured to structural elements and exclude wall finishes and construction tolerances.  
 2. All dimensions have been provided by our consultant architects.  
 3. All materials, dimensions and drawings are approximate. Information is subject to change without notice.  
 4. Actual suite area may vary from the stated area. Drawings not to scale. The developer reserves the right to make revisions.  
 5. For each unit type, unit sizes and details might be slightly different. Please refer to the sales and purchase agreement for the actual size of each specific unit.  
 6. North direction as per the Keyplan

# SAMANA

DEVELOPERS

## 3 BEDROOM + LAUNDRY + POOL (TYPE 1)



7TH FLOOR KEYPLAN  
UNIT - 707



8TH FLOOR KEYPLAN  
UNIT - 806



**Disclaimer:**  
 1. All room dimensions are measured to structural elements and exclude wall finishes and construction tolerances.  
 2. All dimensions have been provided by our consultant architects.  
 3. All materials, dimensions and drawings are approximate. Information is subject to change without notice.  
 4. Actual suite area may vary from the stated area. Drawings not to scale. The developer reserves the right to make revisions.  
 5. For each unit type, unit sizes and details might be slightly different. Please refer to the sales and purchase agreement for the actual size of each specific unit.  
 6. North direction as per the Keyplan

# SAMANA

DEVELOPERS



## 3 BEDROOM + LAUNDRY + STORE + POOL (TYPE 2)



5TH & 6TH TYPICAL FLOOR KEYPLAN  
UNIT - 507, 607



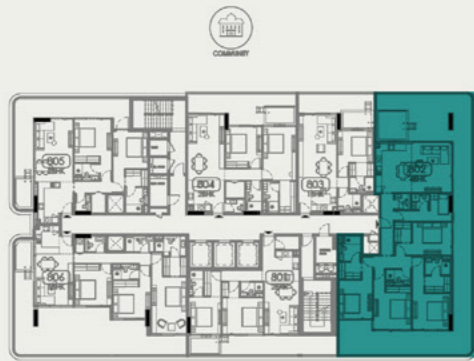
**Disclaimer:**  
1. All room dimensions are measured to structural elements and exclude wall finishes and construction tolerances.  
2. All dimensions have been provided by our consultant architects.  
3. All materials, dimensions and drawings are approximate. Information is subject to change without notice.  
4. Actual suite area may vary from the stated area. Drawings not to scale. The developer reserves the right to make revisions.  
5. For each unit type, unit sizes and details might be slightly different. Please refer to the sales and purchase agreement for the actual size of each specific unit.  
6. North direction as per the Keyplan

# SAMANA

DEVELOPERS



## 4 BEDROOM + MAID + POOL



8TH FLOOR KEYPLAN  
UNIT - 802



**Disclaimer:**  
1. All room dimensions are measured to structural elements and exclude wall finishes and construction tolerances.  
2. All dimensions have been provided by our consultant architects.  
3. All materials, dimensions and drawings are approximate. Information is subject to change without notice.  
4. Actual suite area may vary from the stated area. Drawings not to scale. The developer reserves the right to make revisions.  
5. For each unit type, unit sizes and details might be slightly different. Please refer to the sales and purchase agreement for the actual size of each specific unit.  
6. North direction as per the Keyplan



# SAMANA

DEVELOPERS