

the
great
escape 2

SIGNATURE
RESIDENCES

Escape to

THE THRILL OF LIFE
IMMERSED WITHIN
A BREATHTAKING
BACKDROP. (AIDA)

CLIFFS
AND VALLEYS

MUSCAT COASTAL VIEWS

Escape to

NEW ADVENTURES RISING 130M ABOVE THE SHORES.

YITI BEACH



HIKING TRAILS
MOUNTAIN BIKING TRAILS
WATER SPORTS ACTIVITIES

Escape to
**A PLACE WHERE
BOUNDARIES
ARE PUSHED WITH
EVERY SWING**

18-HOLE GOLF COURSE

SOCIAL MEMBERSHIP
IN THE GOLF CLUB



Trump International Golf Club

OMAN



Escape to A HIGH LIFE WITHIN A GATED COMMUNITY

4.3M SQM COMMUNITY
IN THE HEART OF MUSCAT

25MIN FROM MUSCAT
INTERNATIONAL AIRPORT



AMIDST THE CLIFFS OF
AIDA IS A HOTEL UNLIKE
ANY OTHER, COMPRISING
FLOATING SUITES THAT
OVERLOOK THE SEA
BELOW AND MUSCAT'S
PICTURESQUE HORIZON
FROM EVERY ANGLE.

Its charming and spacious interiors, earthy
tones, outdoor lounge, and hints of nature
seamlessly meld with the surrounding
terrain, whisking guests away to the edge
of the world.

The Most Enchanting Hotel on Earth

Al Bustan Palace
Ritz Carlton

Jumeirah
Muscat Bay

Muscat Bay
Resort

Shangri-La Hike

Shangri-La Barr
Al Jissah Resort

Yeti Marina

Nikki Beach
Resort & Spa
UPCOMING

INDIAN OCEAN

AIDA
BEACH

AIDA

KEY DESTINATIONS

WITHIN MINUTES

- 1 MN NIKKI BEACH RESORT & SPA (2024)
- 2 MN YITI BEACH
- 5 MN YENKIT BEACH
- 5 MN MARINA SUSTAINABLE CITY
- 7 MN SHANGRI-LA HIKE
- 7 MN MUSCAT BAY
- 7 MN JUMEIRAH MUSCAT
- 7 MN SHANGRI-LA RESORT
- 8 MN AL BUSTAN PALACE RITZ CARLTON
- 10 MN MUTRAH / CBD
- 25 MN MUSCAT INTERNATIONAL AIRPORT

World-class AMENITIES



TRUMP
INTERNATIONAL
HOTEL



TRUMP
INTERNATIONAL
GOLF CLUB



18 HOLE TRUMP
CHAMPIONSHIP
GOLF COURSE



HANGING
SUITES



THE CLIFF
NIGHT CLUB



AIDA
BEACH



PLAZAS, CAFES
AND RESTAURANTS



HIKING
TRAILS



OUTDOOR
LANDSCAPES



WELLNESS
CENTER



RUNNING
TRAILS



VIEWING
DECKS



FITNESS
CENTER



MOUNTAIN
BIKE TRAILS



SWIMMING
POOLS



PROMENADES



PARKS



CHILDREN'S
SPLASH AREAS



LIFE-SIZE CHESS
BOARD



the great escape 2


SIGNATURE
RESIDENCES

The Great Escape 2 is a vibrant residential building, rising 9 stories high, its organic design is directly inspired by the breathtaking environment and the adjacent sea. The Great Escape 2 is your portal to a life filled with excitement and leisure.





AIDA – MASTERPLAN

 The Great Escape 2

Building C

Building D

360° VIEWS: RESHAPING DAILY LIFE

AT 130 METERS & BEYOND



360° VIEWS

Panoramic expanse of AIDA & the Trump International Golf Course Oman



360° VIEWS

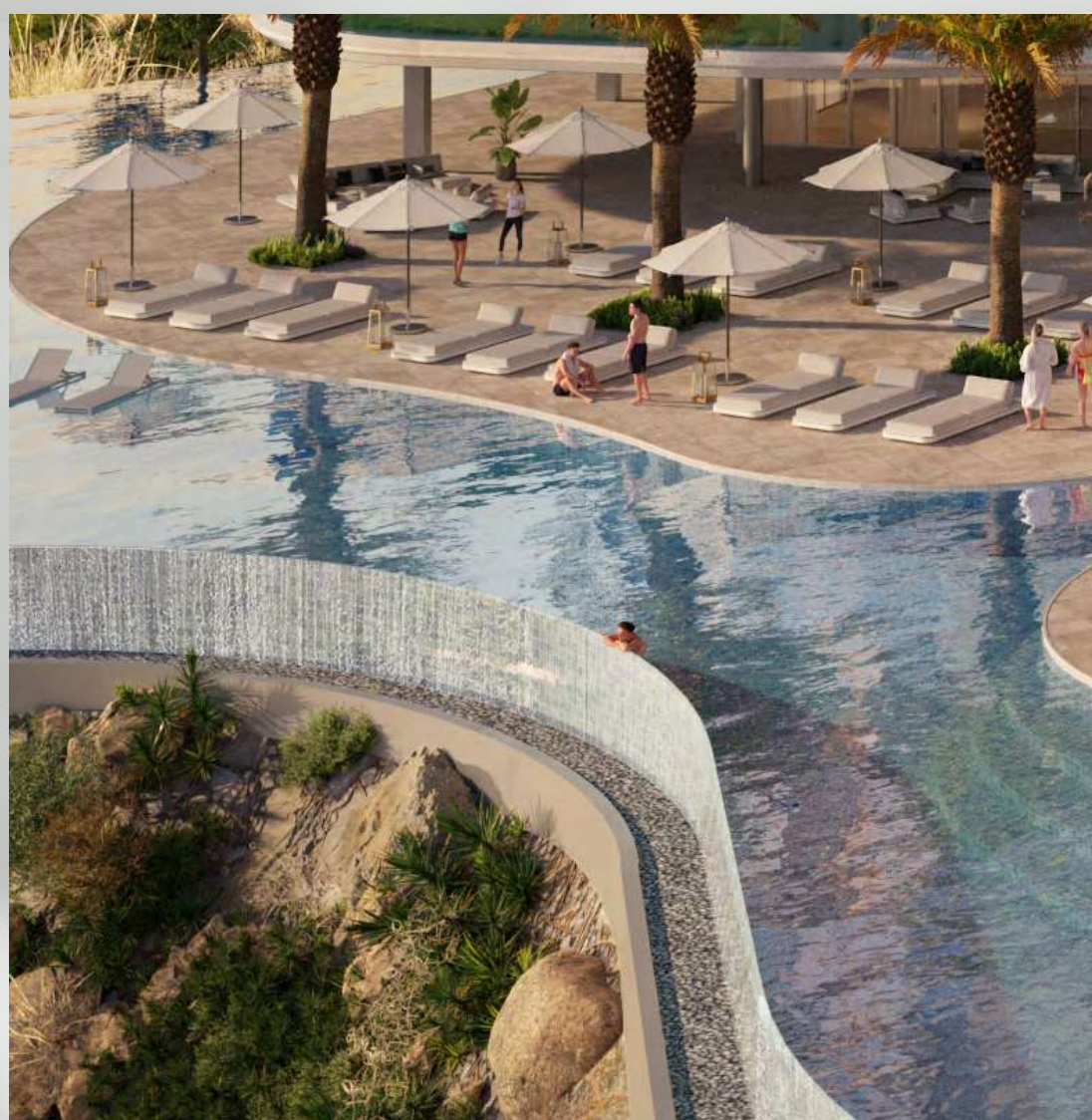
Muscat coastline & its pristine natural surroundings





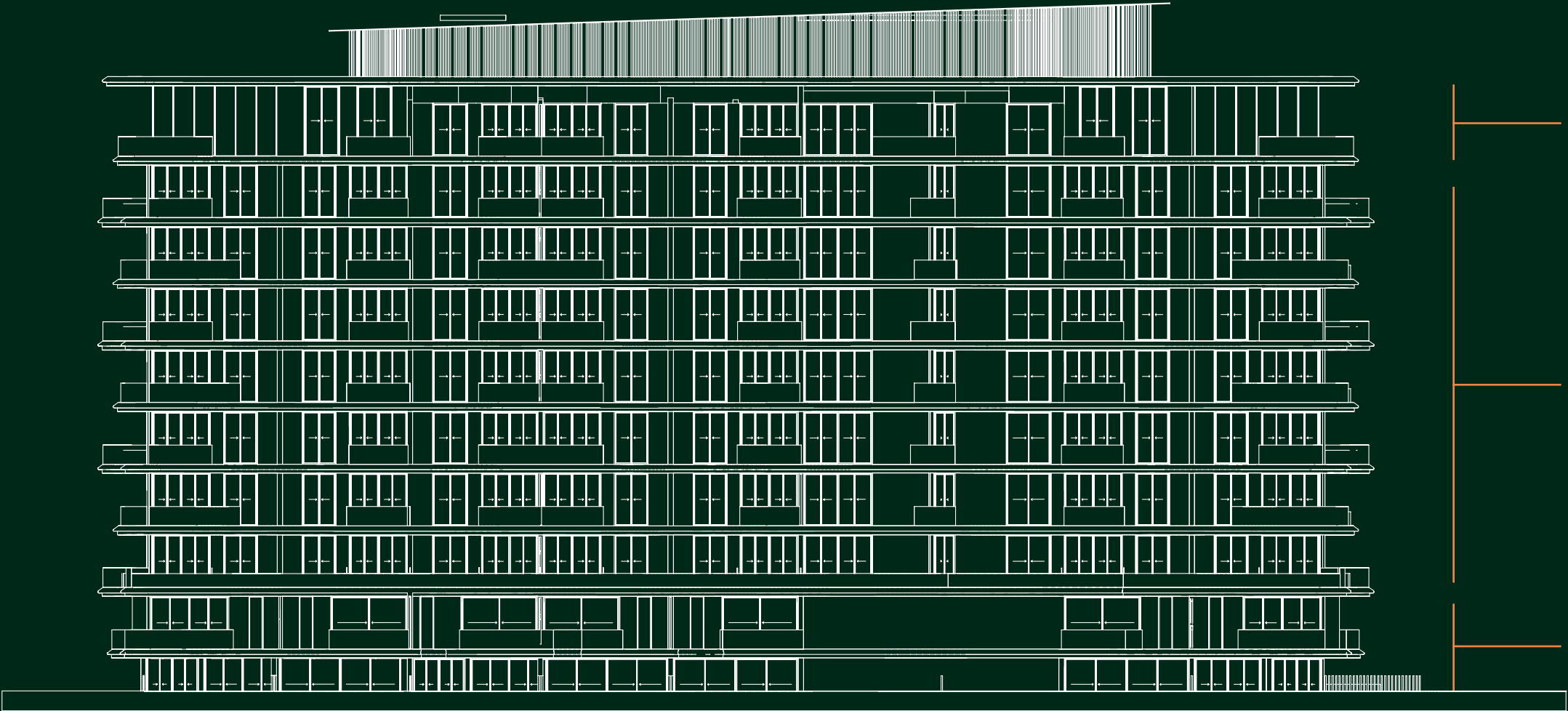
A Heightened Perspective

EXPERIENCE THE GREAT ESCAPE 2 SIGNATURE RESIDENCES, WHERE ABUNDANT NATURAL LIGHT FILLS STYLISH INTERIORS. EVERY DETAIL, FROM THE GRAND DOUBLE-HEIGHT ENTRANCE LOBBY TO PREMIUM FINISHES, IS METICULOUSLY CURATED. ENJOY A WEALTH OF AMENITIES, INDOORS AND OUT, DESIGNED FOR RESIDENTS TO INDULGE AND THRIVE.



Elevated Design/ Elevated Living.

The Great Escape 2 offers elegant modern design, featuring bright three-bedroom garden villas, and sleek one-to-three-bedroom apartments. All designed for a life of thrilling luxury and relaxation.



Floor 9
1-Bedroom / 2-Bedrooms / 3-Bedrooms

Floors 1-8
1-Bedroom / 2-Bedrooms

GF & Lower GF
Lobby and Parking

— BUILDING C & D —
G + 9

AMENITIES



CLIFF EDGE
INFINITY POOL



PREMIUM
FITNESS CENTRE



CHILDREN
SWIMMING POOL



CHILDREN
PLAY AREA



24 / 7
SECURITY

The Pinnacle of 21st-Century Living

Imagine waking up to breathtaking views every day. Step out and be greeted by the stunning and panoramic backdrop of AIDA, its golf course and the pristine Muscat coastline.





FLOOR-TO-CEILING
WINDOWS FRAME THE
OCEAN'S ENDLESS
HORIZON AND THE
SPRAWLING GREEN
EXPANSE OF THE GOLF
COURSE, CREATING
AN EVER-CHANGING
MASTERPIECE THAT
GRACES EVERY ROOM.



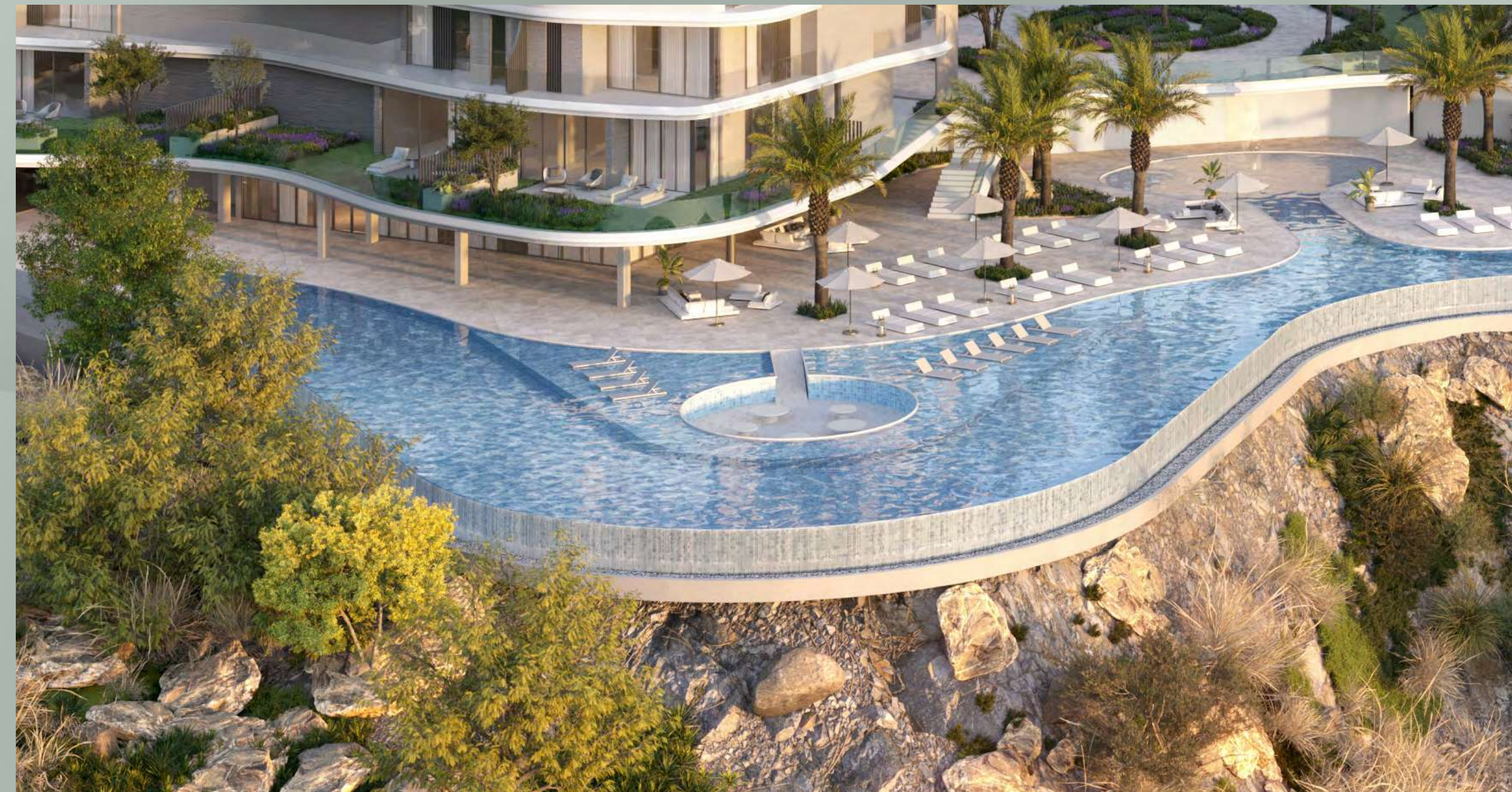
This is where residents can
relish in the beauty of their
surroundings while embracing
the thrill of their elegantly
designed home.

**Modernity twisted
in the tides**



*An exhilarating escape
at every corner*

Whether you're looking to relax, socialize, or entertain, The Great Escape's offerings are curated to capture and elevate the comforts of home. Between the plush lobby, the state-of-the-art fitness centre, the cliff-edge infinity pool and the landscaped gardens, every experience is guaranteed to transcend the ordinary.





16 REASONS TO INVEST IN (AIDA).

1

100% FOREIGN OWNERSHIP

For special economic zone/
free zone

2

0% PERSONAL INCOME TAX

For special economic zone/
free zone

3

0% INHERITANCE TAX

Oman applies the inheritance
laws of the investor's country
of origin, not local laws

4

LIFETIME RESIDENCY VISA

5

HASSLE-FREE BANK ACCOUNT SETUP

6

0% CAPITAL GAINS TAX

7

25 YEAR EXEMPTION FROM CORPORATE INCOME TAX

For special economic zone/free
zone

8

HOME TO THE TRUMP INTERNATIONAL GOLF CLUB OMAN

9

FREE SOCIAL MEMBERSHIP TO TRUMP INTERNATIONAL GOLF CLUB OMAN

10

HOME TO THE MOST ENCHANTING HOTEL IN THE WORLD

11

UPCOMING RAILWAY PROJECT CONNECTING UAE TO MUSCAT, OMAN

12

5-STAR RECREATIONAL AND DINING OPTIONS

13

A GATED COMMUNITY AND GOLFING DESTINATION

14

130 METERS ABOVE THE SHORES

15

ONE OF THE SAFEST COUNTRIES IN THE WORLD

16

THE QUALITY OF LIFE INDEX BY NUMBEO, RANKED OMAN 7TH GLOBALLY AND 1ST IN BOTH ASIA AND THE ARAB WORLD IN 2023

MEMBERSHIP TYPES AT Trump International Golf Club Oman

Explore our membership options designed for both social engagement and golf enthusiasts.

Trump International Social Membership

Offered complimentary to every AIDA investor and owner, Trump International Social Membership includes access to exclusive club social activities, upscale dining, wellness facilities, pilates, and fitness areas, enhancing your social and leisure experience.

Trump International Golf Membership

Open to AIDA investors, owners, and external guests, Trump International Golf Membership provides access to our prestigious 18-hole championship golf course. Ideal for anyone passionate about golf, this membership offers a complete golfing experience along with full club amenities.





SPECIFICATIONS & FLOOR PLANS

Disclaimer: All pictures, plans, layouts, information, data and details included in this brochure are indicative only and may change at any time up to the final 'as built' status in accordance with final designs of the project, regulatory approvals and planning permissions. All accessories and interior finishes such as wallpaper, chandeliers, furniture, electronics, white goods, curtains, hard and soft landscaping, pavements, features, gym, and other elements displayed in the brochure, or between the plot boundary, are not part of the unit and are shown for illustrative purposes only.



PROJECT DETAILS+ SPECIFICATIONS/

PROJECT

- Location: AIDA, Yiti and Yenkit, Oman
- Developer: Dar Global PLC
- Configuration: G+9
- Unit type: Unfurnished
- 1-bed units: 1 parking space
- 2-bed units: 1 parking space
- 3-bed units: 2 parking spaces

SERVICES

- Pool and communal area maintenance
- 24/7 security
- Gated community

AMENITIES

- Infinity pool
- State-of-the-art gym
- Children swimming pool
- Kids play area
- Changing facilities
- Viewing Deck
- Hiking Trail
- Mountain Bike Trail
- Outdoor Landscapes
- Running Trail
- Promenades

FOYER / LIVING / DINING

- Porcelain flooring tiles
- Porcelain skirting
- Internal plastered walls with emulsion paint
- Suspended ceiling with emulsion paint

KITCHEN

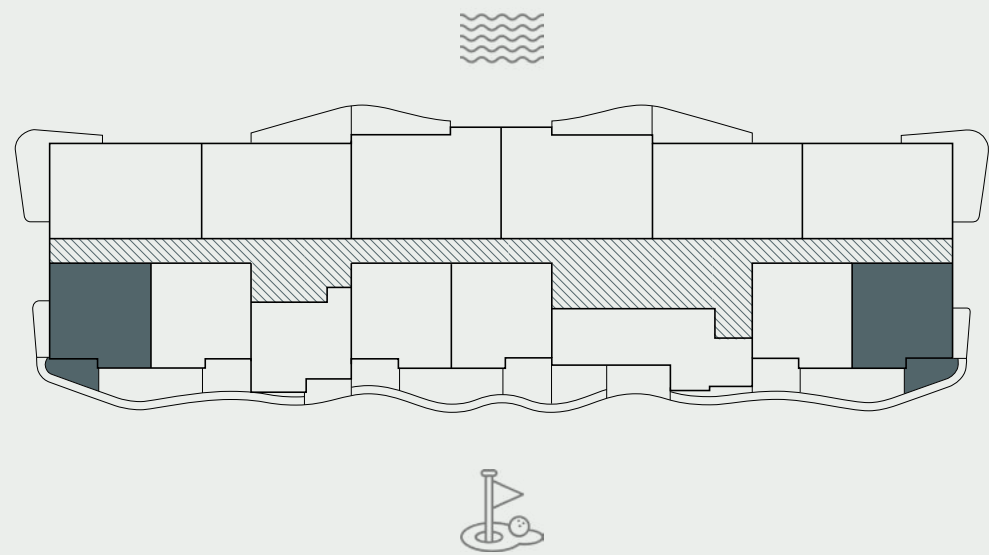
- Porcelain flooring tiles
- Porcelain skirting tiles
- Paint and porcelain walls
- Suspended ceiling
- Solid surface countertops
- Joinery with lacquered or laminate finish for cabinets
- Appliances: Built in fridge, dish washer, cooker, exhaust hood, stainless steel sink

BEDROOMS

- Porcelain tiles
- Porcelain skirting tiles
- Plastered walls with emulsion paint
- Paint finish ceiling
- Built-in joinery with lacquered or laminate finish

BATHROOMS / POWDER ROOM

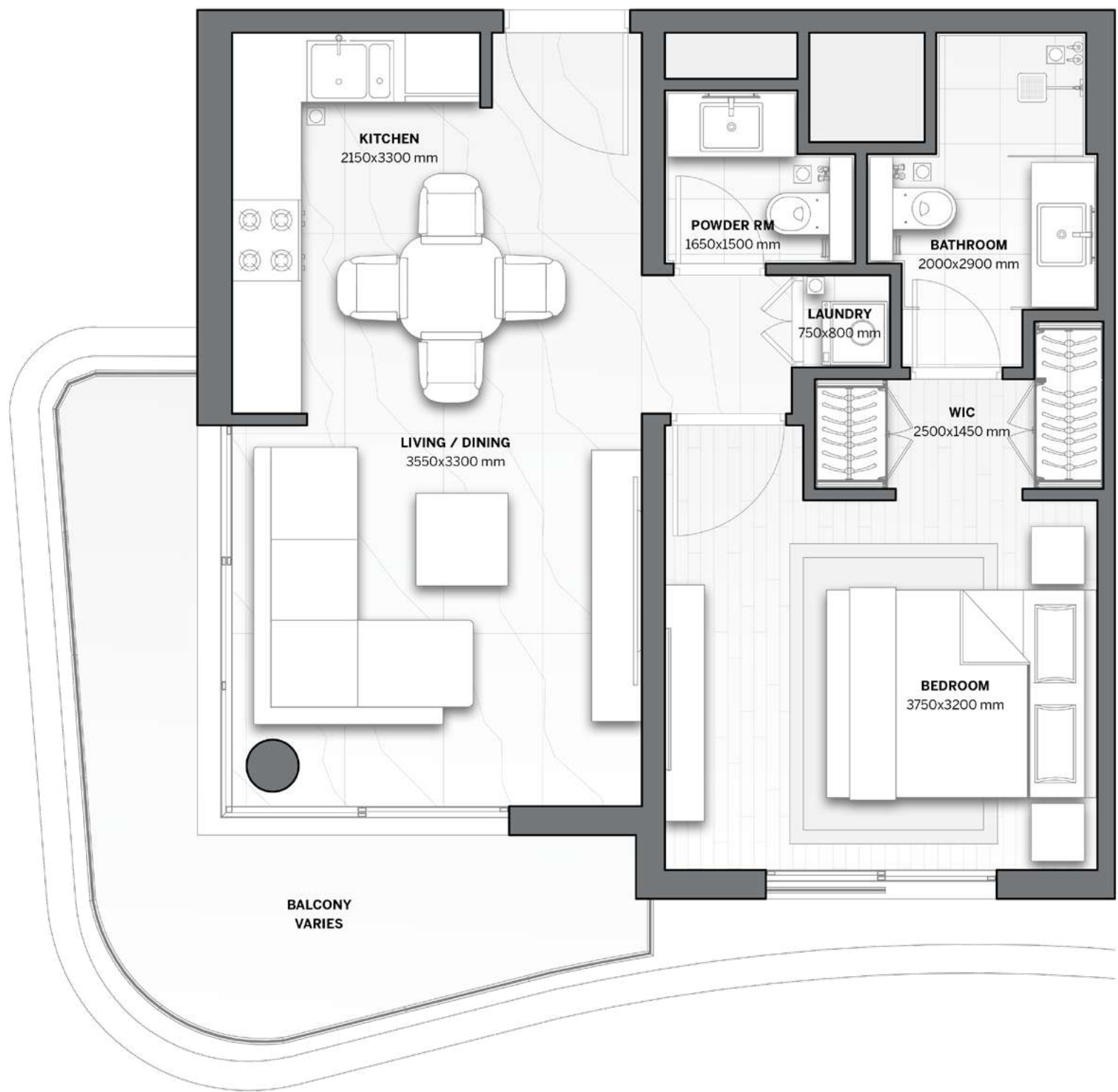
- Porcelain flooring tiles - marble look
- Porcelain wall tiles - marble look
- Moisture resistant gypsum ceiling finished with paint
- Solid surface countertops or equivalent
- Joinery with lacquered or laminate finish
- Standard sanitary fixtures and accessories
- Standard sanitary ware and accessories
- Mirror included in bathrooms

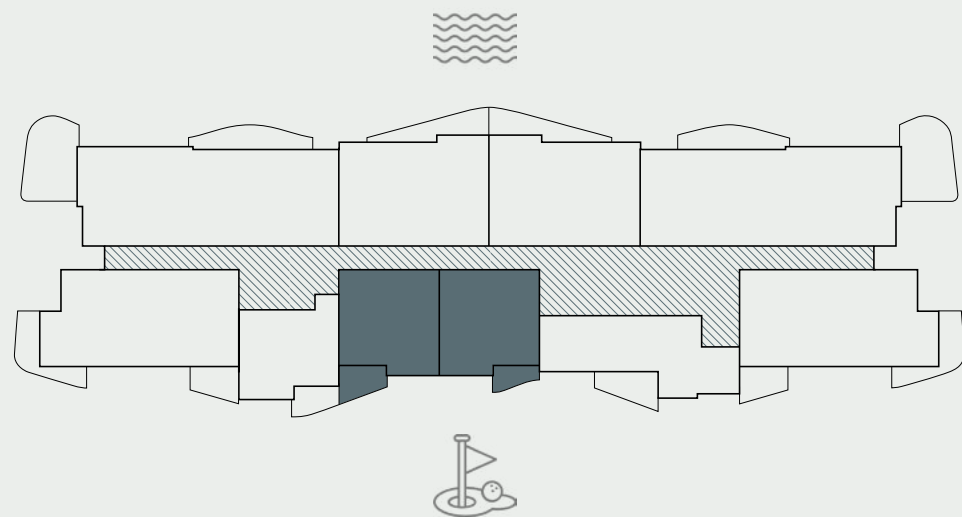
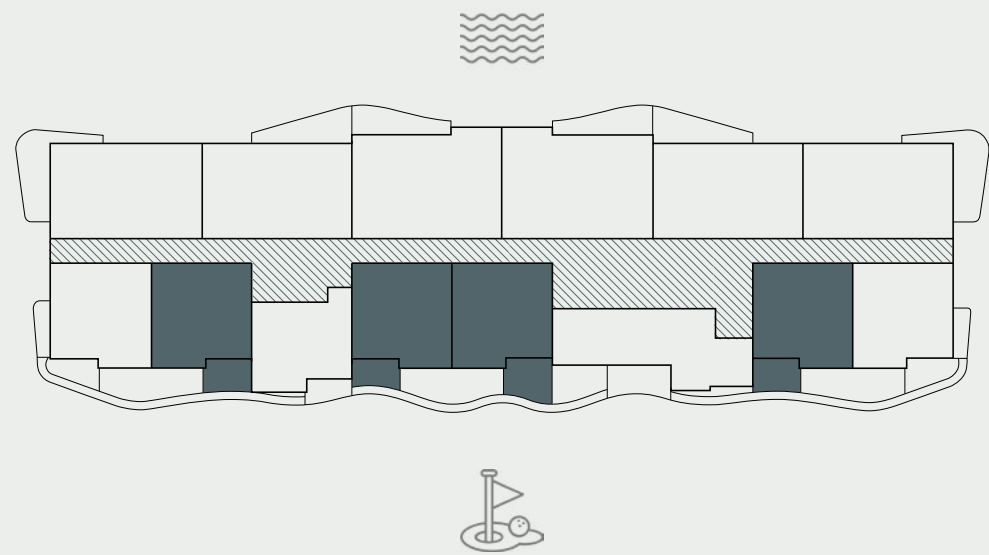


1-BED/
TYPE 1A

RESIDENCE	SQM	SQFT
Internal Area	53	570
Balcony Area	6 - 15	65 - 162
Total Built up Area	59 - 68	635 - 732
Parking Space	1	

Disclaimer: All pictures, plans, layouts, information, data and details included in this brochure are indicative only and may change at any time up to the final 'as built' status in accordance with final designs of the project, regulatory approvals and planning permissions. All accessories and interior finishes such as wallpaper, chandeliers, furniture, electronics, white goods, curtains, hard and soft landscaping, pavements, features, gym, and other elements displayed in the brochure, or between the plot boundary, are not part of the unit and are shown for illustrative purposes only.

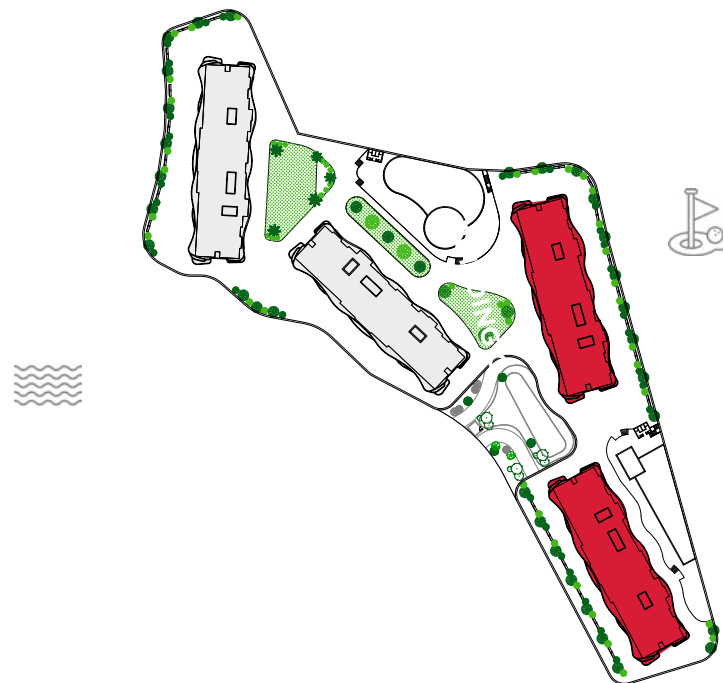
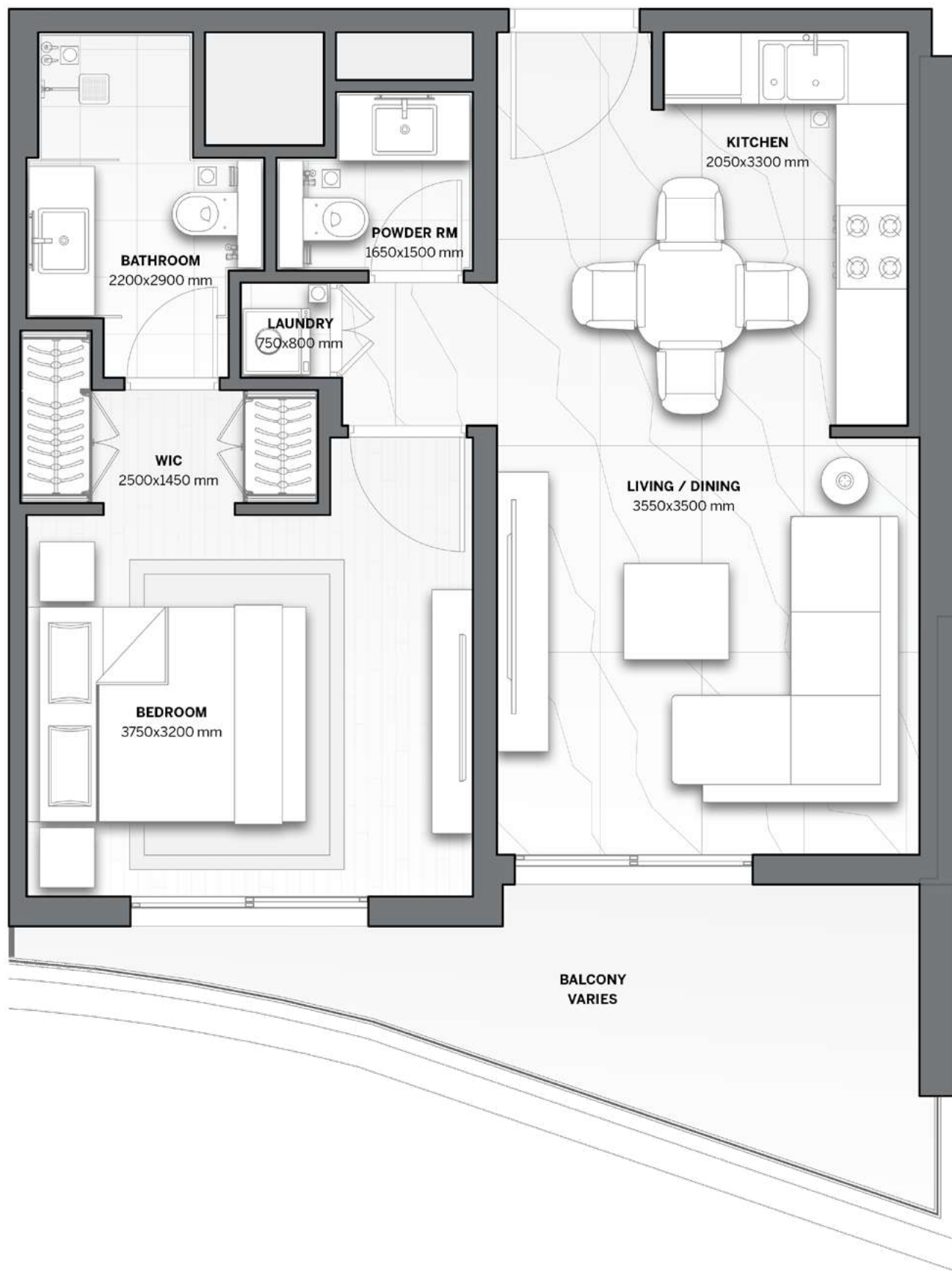


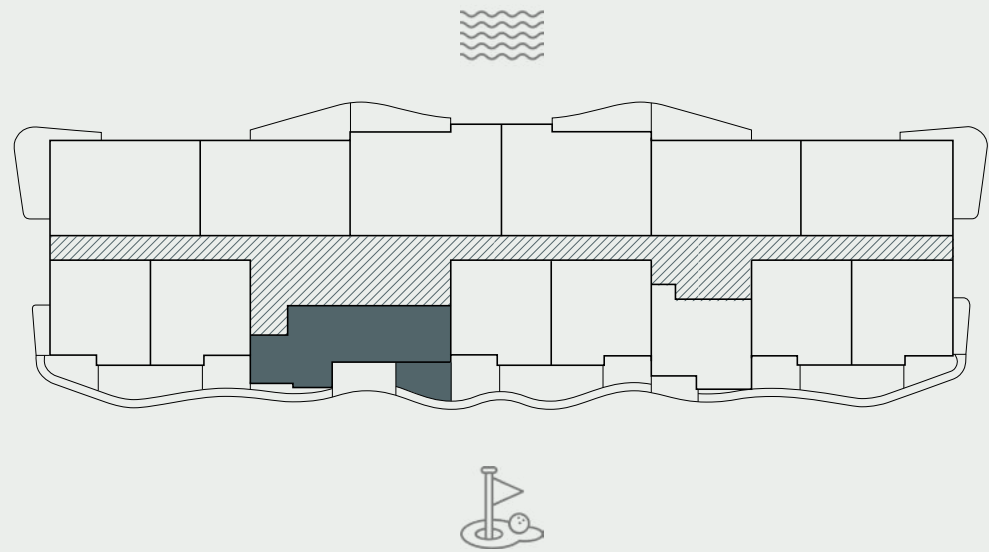


RESIDENCE	SQM	SQFT
Internal Area	53	570
Balcony Area	5 - 13	54 - 140
Total Built up Area	58 - 66	624 - 710
Parking Space	1	

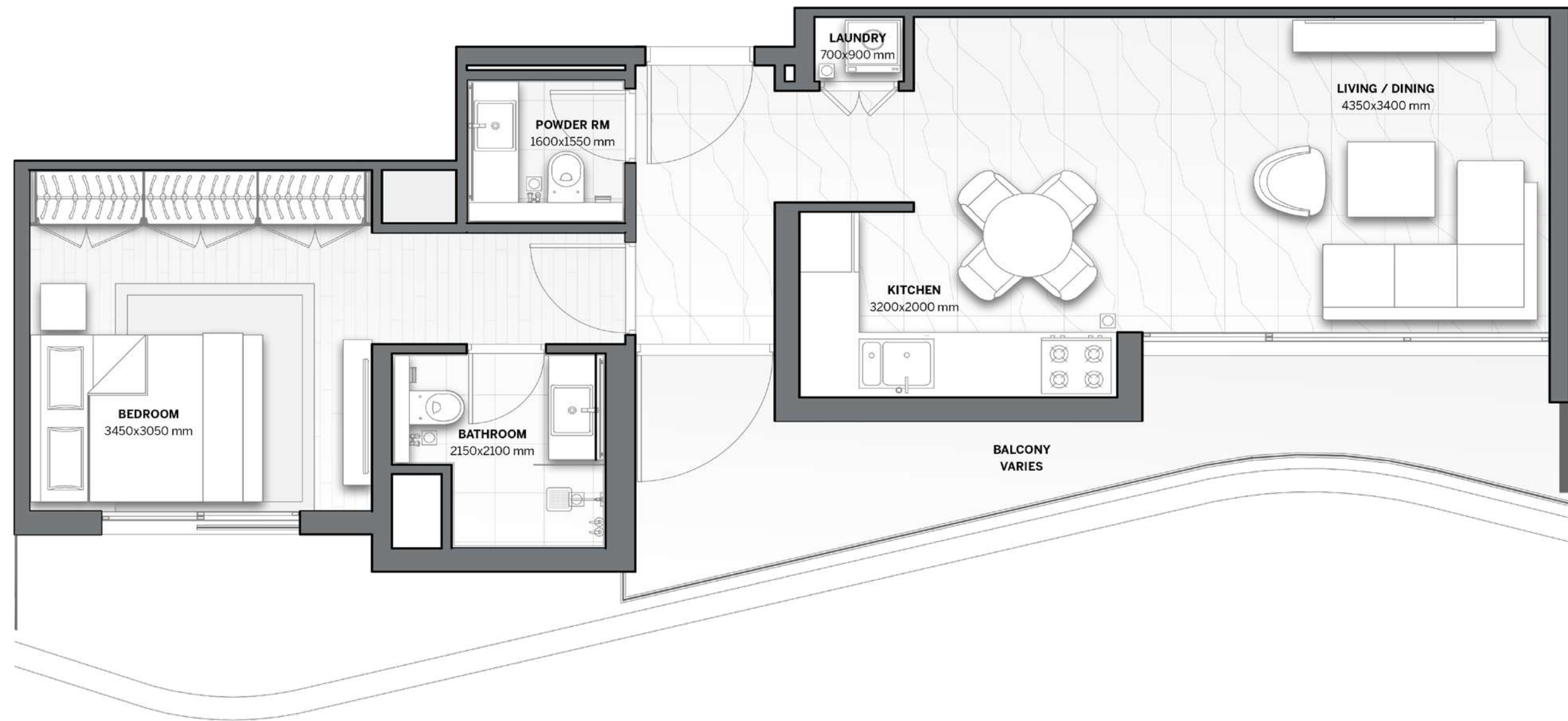
Disclaimer: All pictures, plans, layouts, information, data and details included in this brochure are indicative only and may change at any time up to the final 'as built' status in accordance with final designs of the project, regulatory approvals and planning permissions. All accessories and interior finishes such as wallpaper, chandeliers, furniture, electronics, white goods, curtains, hard and soft landscaping, pavements, features, gym, and other elements displayed in the brochure, or between the plot boundary, are not part of the unit and are shown for illustrative purposes only.

1-BED/ TYPE 1B



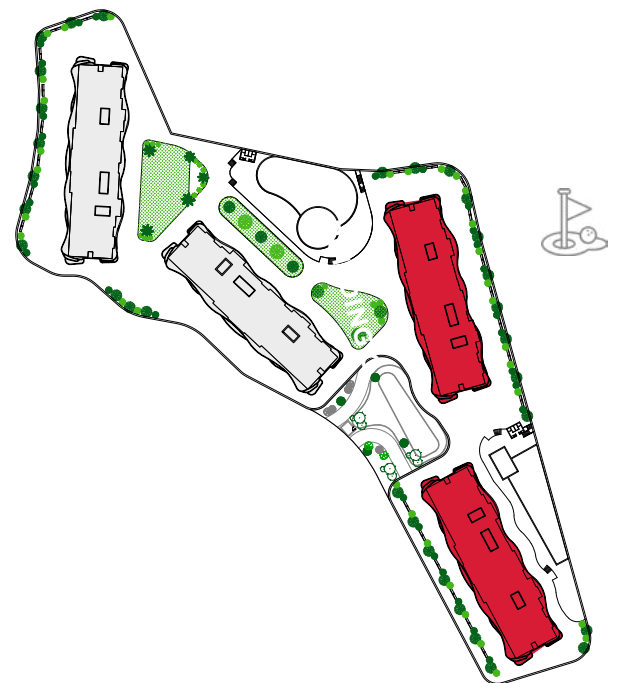


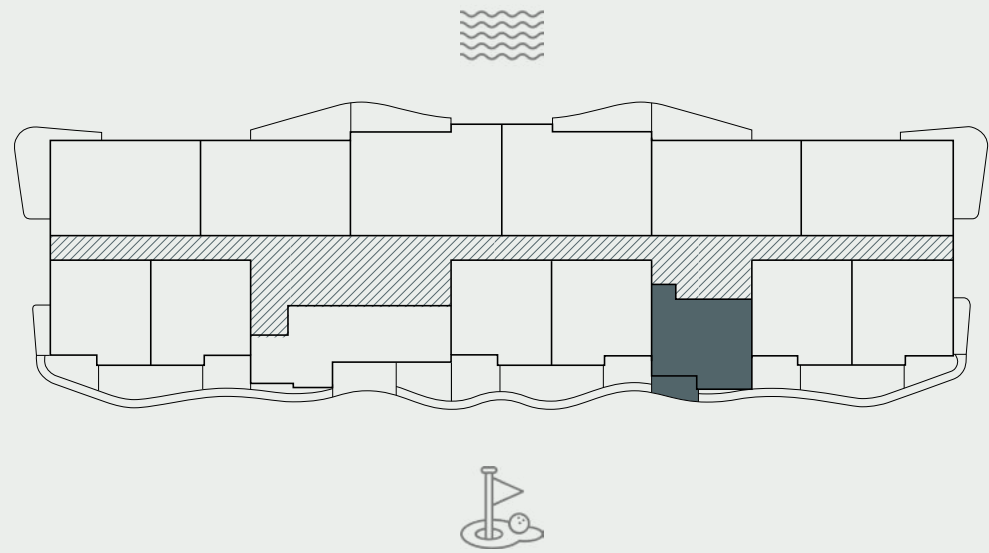
1-BED/ TYPE 1C



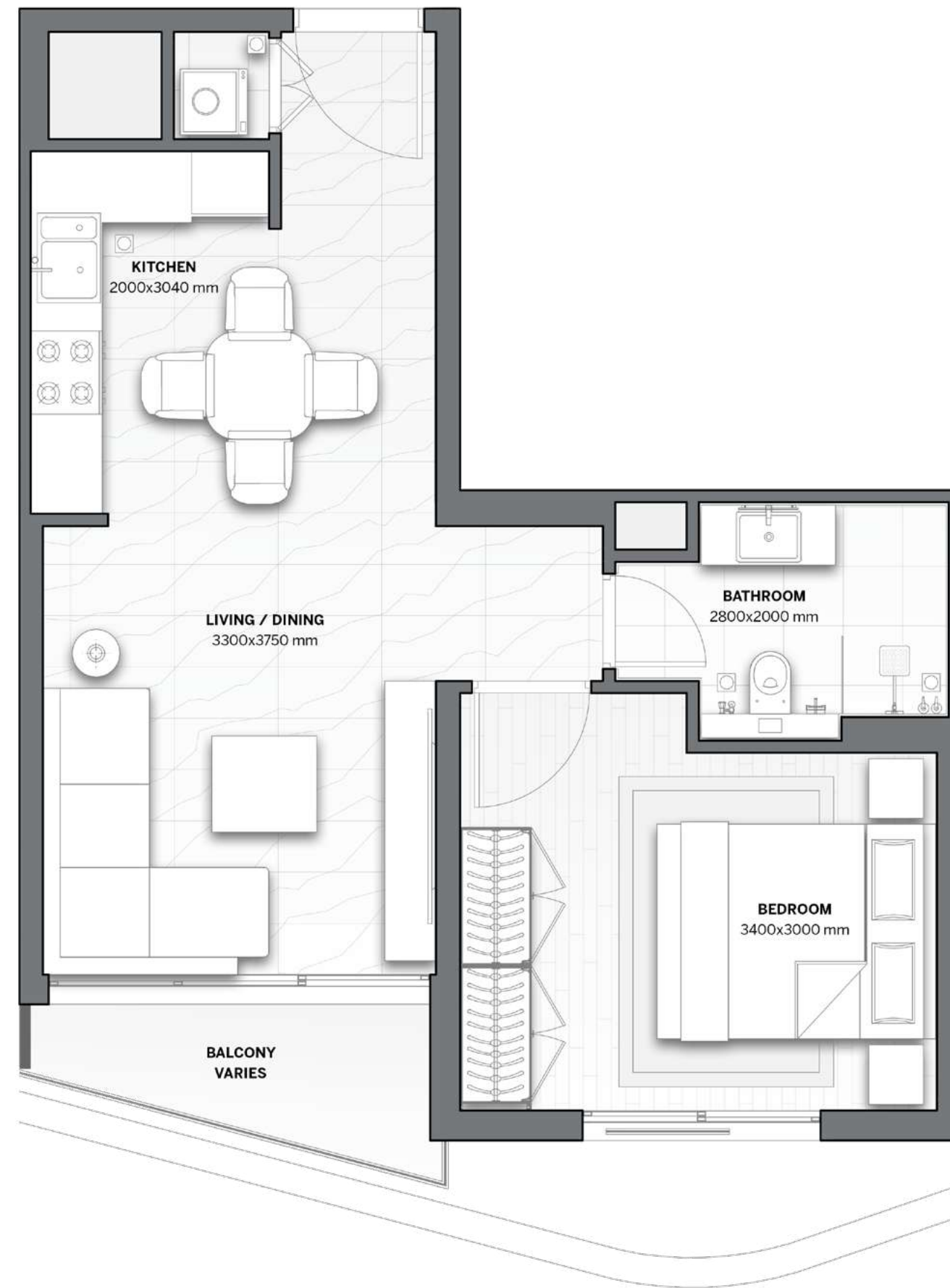
RESIDENCE	SQM	SQFT
Internal Area	59	635
Balcony Area	5 - 12	54 - 129
Total Built up Area	64 - 71	689 - 764
Parking Space	1	

Disclaimer: All pictures, plans, layouts, information, data and details included in this brochure are indicative only and may change at any time up to the final 'as built' status in accordance with final designs of the project, regulatory approvals and planning permissions. All accessories and interior finishes such as wallpaper, chandeliers, furniture, electronics, white goods, curtains, hard and soft landscaping, pavements, features, gym, and other elements displayed in the brochure, or between the plot boundary, are not part of the unit and are shown for illustrative purposes only.





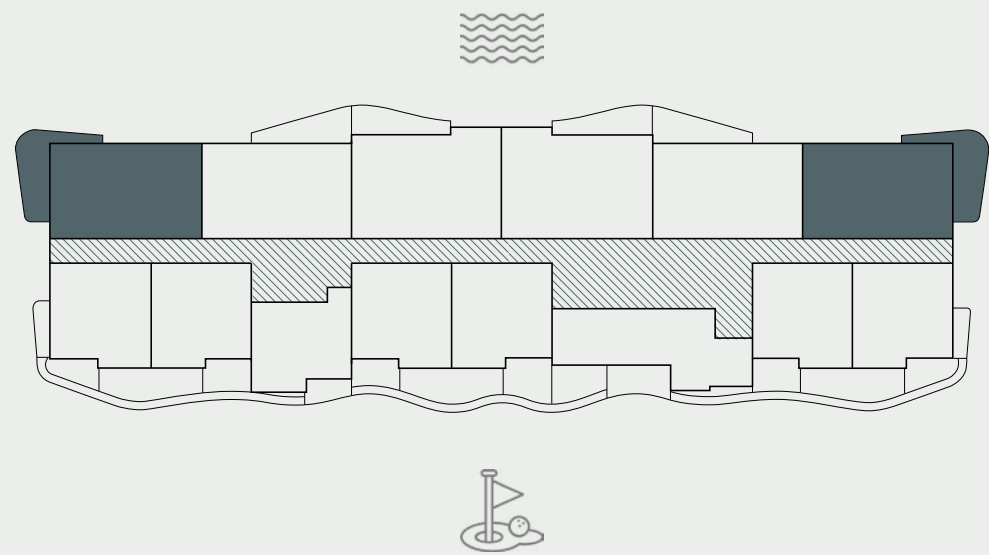
1-BED/ TYPE 1D



RESIDENCE	SQM	SQFT
Internal Area	44	474
Balcony Area	5 - 7	54 - 75
Total Built up Area	49 - 51	528 - 549
Parking Space	1	

Disclaimer: All pictures, plans, layouts, information, data and details included in this brochure are indicative only and may change at any time up to the final 'as built' status in accordance with final designs of the project, regulatory approvals and planning permissions. All accessories and interior finishes such as wallpaper, chandeliers, furniture, electronics, white goods, curtains, hard and soft landscaping, pavements, features, gym, and other elements displayed in the brochure, or between the plot boundary, are not part of the unit and are shown for illustrative purposes only.

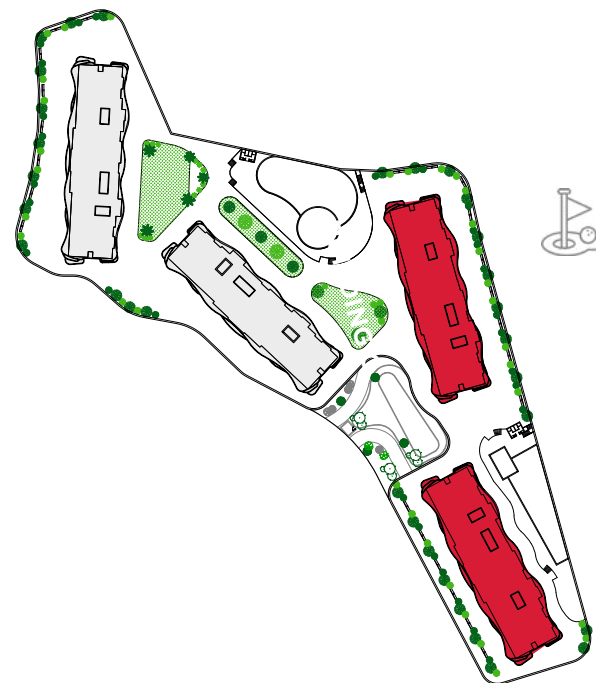
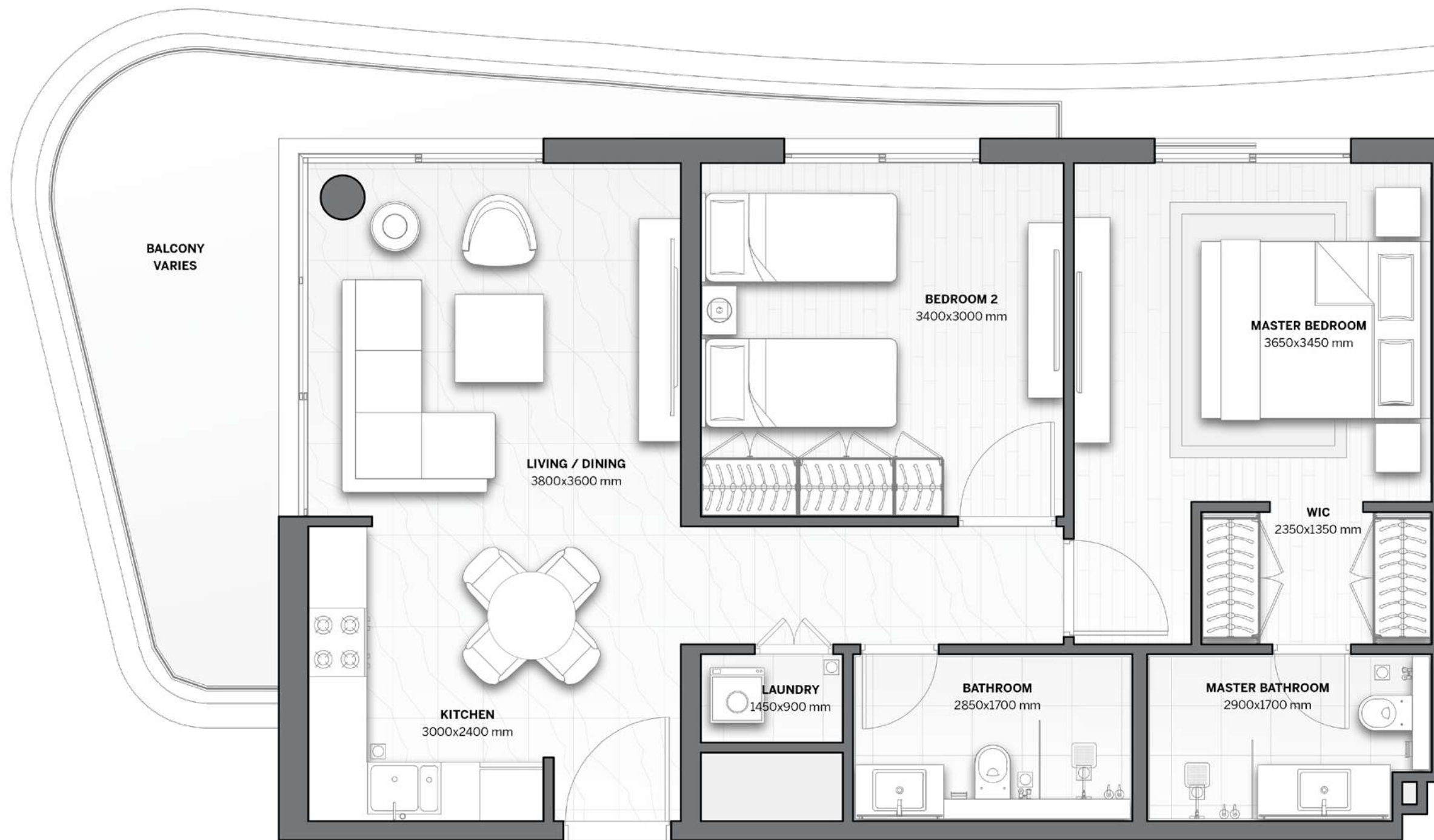


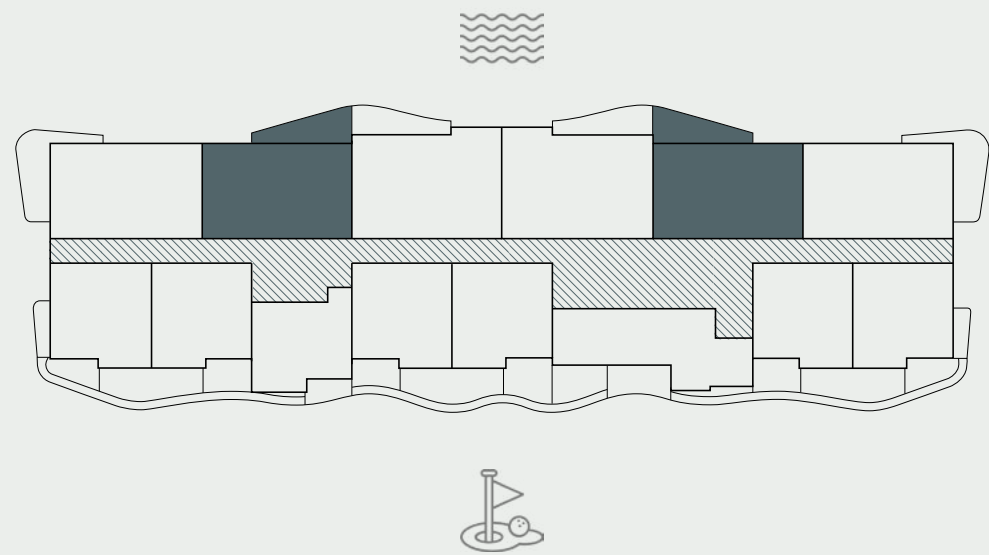


2-BEDS/ TYPE 2A

RESIDENCE	SQM	SQFT
Internal Area	74	796
Balcony Area	15 - 19	162 - 204
Total Built up Area	89 - 93	958 - 1000
Parking Space	1	

Disclaimer: All pictures, plans, layouts, information, data and details included in this brochure are indicative only and may change at any time up to the final 'as built' status in accordance with final designs of the project, regulatory approvals and planning permissions. All accessories and interior finishes such as wallpaper, chandeliers, furniture, electronics, white goods, curtains, hard and soft landscaping, pavements, features, gym, and other elements displayed in the brochure, or between the plot boundary, are not part of the unit and are shown for illustrative purposes only.

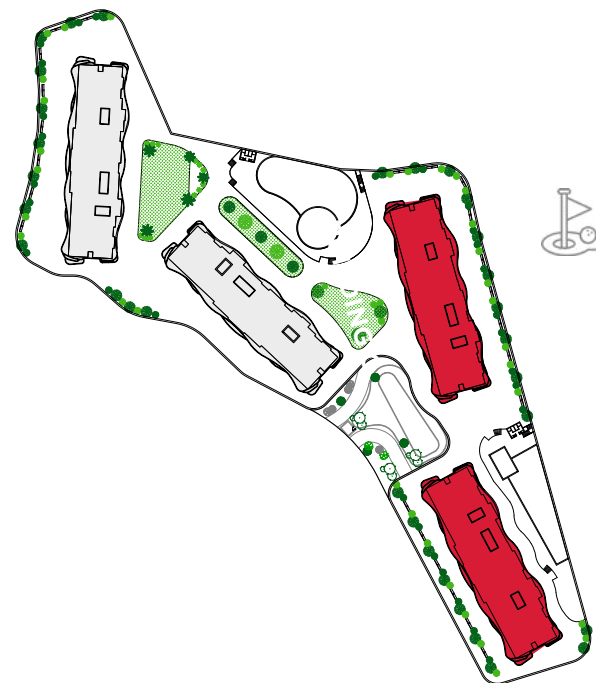
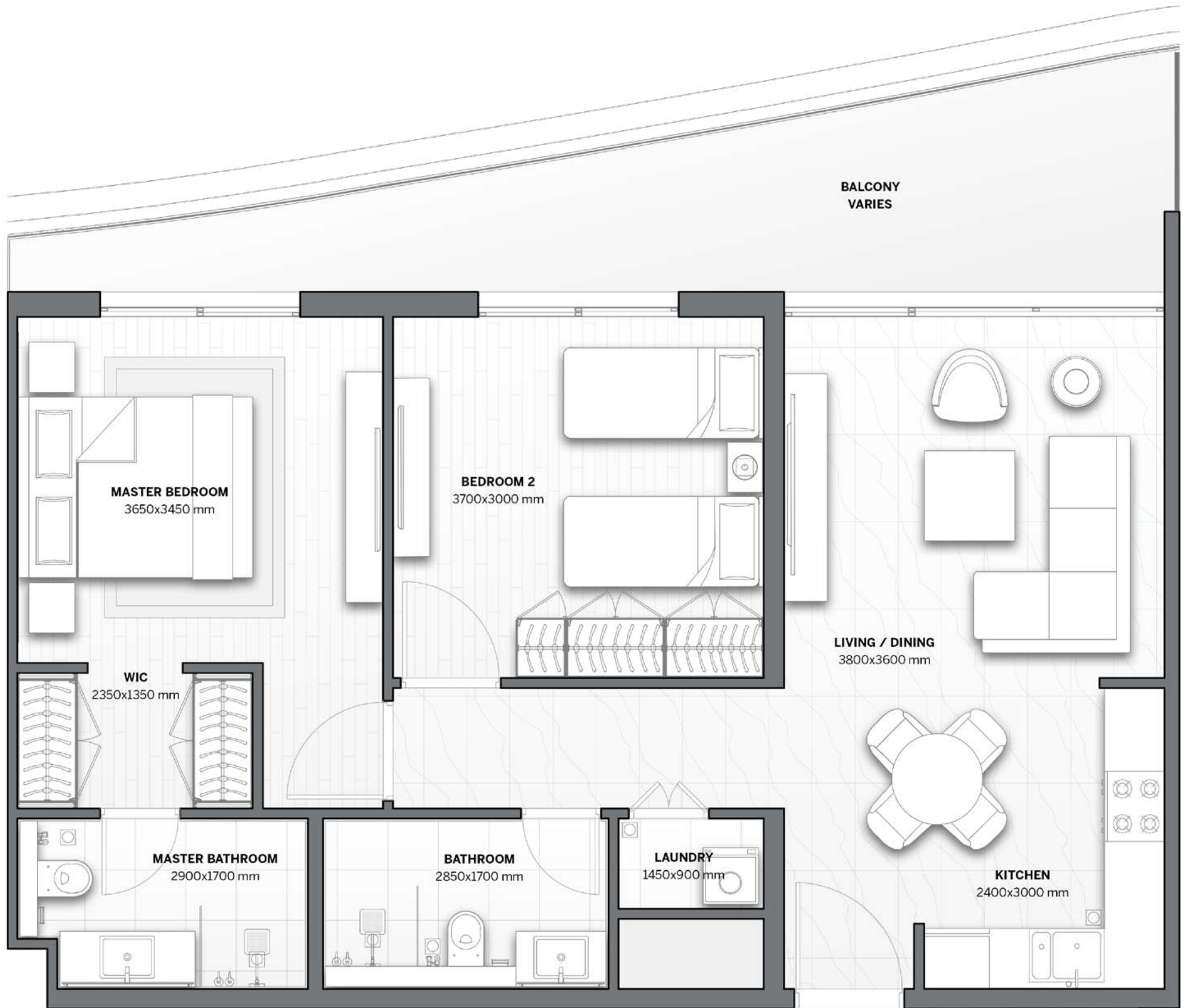


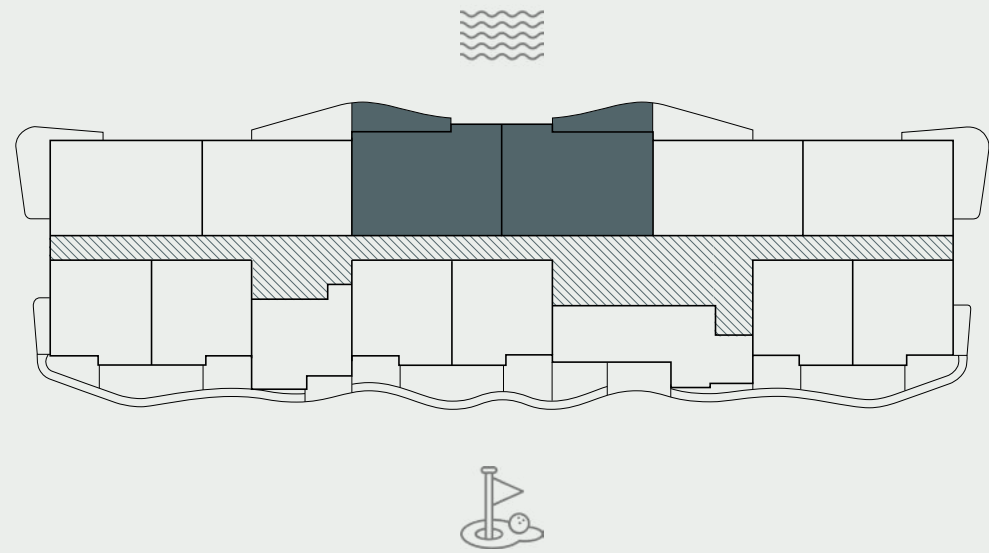


2-BEDS/ TYPE 2B

RESIDENCE	SQM	SQFT
Internal Area	75	807
Balcony Area	13 - 15	140 - 162
Total Built up Area	88 - 90	947 - 969
Parking Space	1	

Disclaimer: All pictures, plans, layouts, information, data and details included in this brochure are indicative only and may change at any time up to the final 'as built' status in accordance with final designs of the project, regulatory approvals and planning permissions. All accessories and interior finishes such as wallpaper, chandeliers, furniture, electronics, white goods, curtains, hard and soft landscaping, pavements, features, gym, and other elements displayed in the brochure, or between the plot boundary, are not part of the unit and are shown for illustrative purposes only.

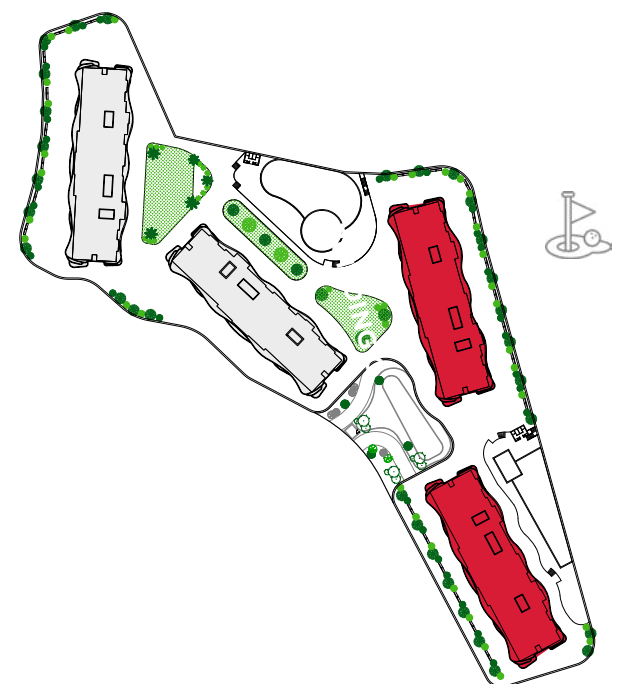


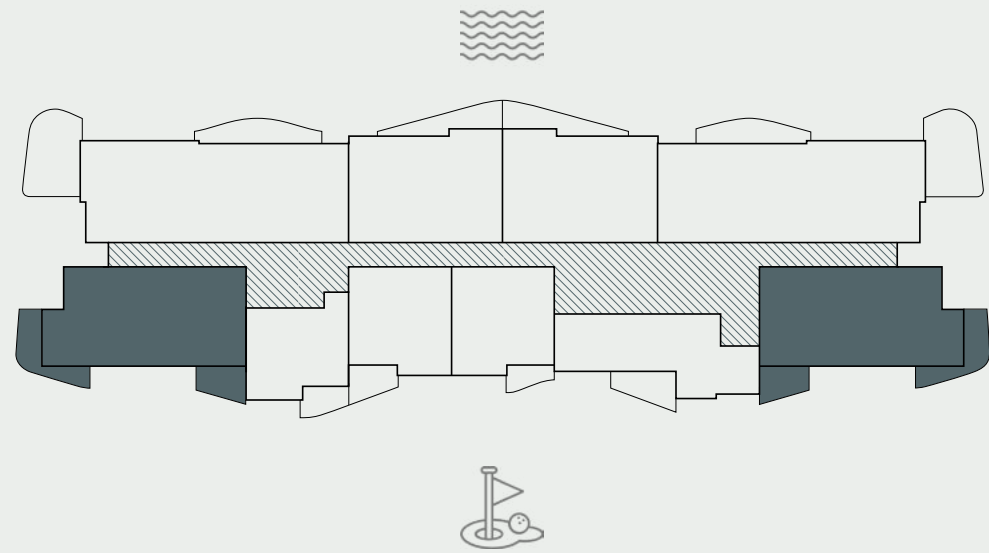


2-BEDS/ TYPE 2C

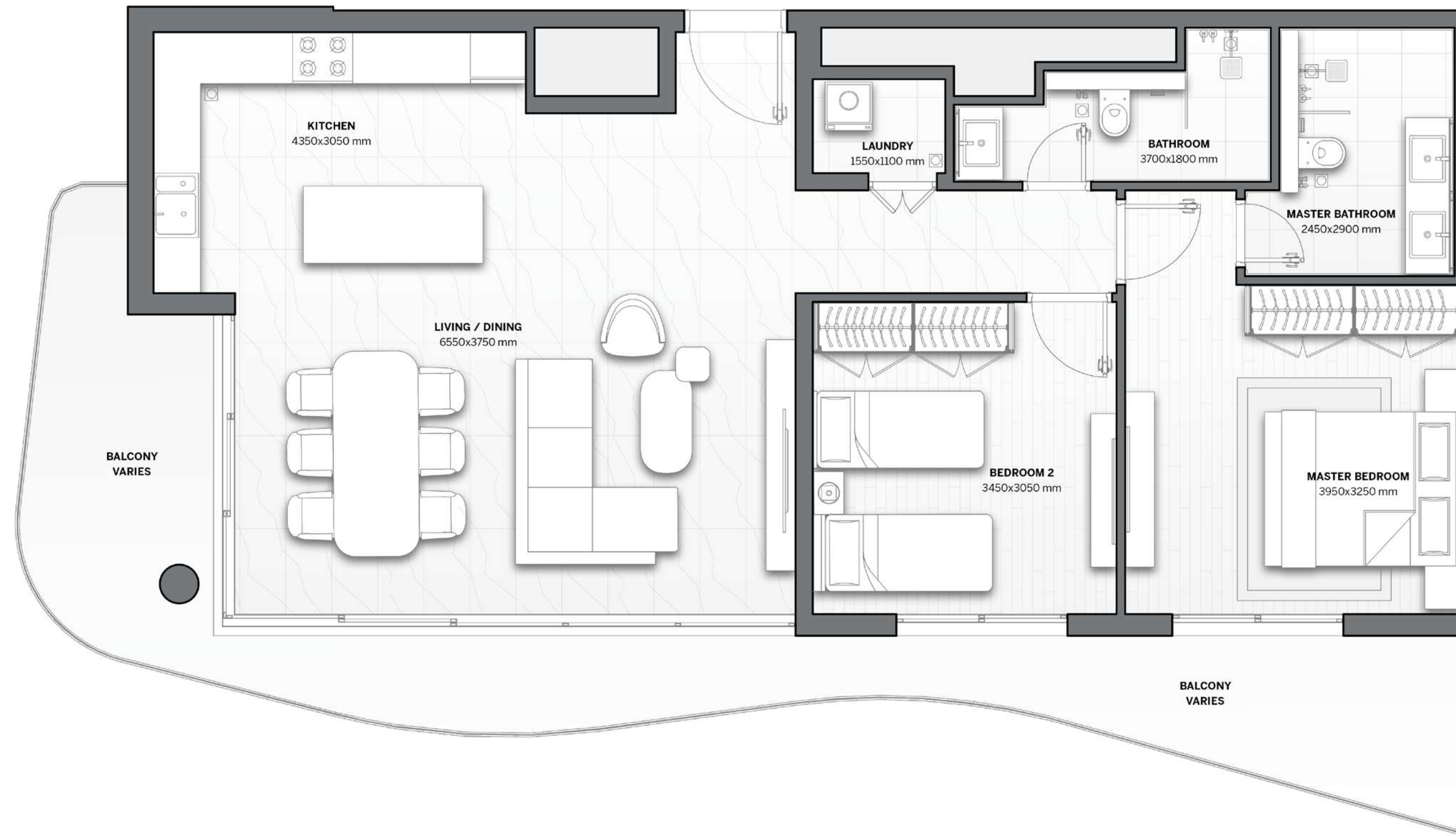
RESIDENCE	SQM	SQFT
Internal Area	77	828
Balcony Area	12 - 14	128 - 152
Total Built up Area	89 - 91	956 - 980
Parking Space	1	

Disclaimer: All pictures, plans, layouts, information, data and details included in this brochure are indicative only and may change at any time up to the final 'as built' status in accordance with final designs of the project, regulatory approvals and planning permissions. All accessories and interior finishes such as wallpaper, chandeliers, furniture, electronics, white goods, curtains, hard and soft landscaping, pavements, features, gym, and other elements displayed in the brochure, or between the plot boundary, are not part of the unit and are shown for illustrative purposes only.



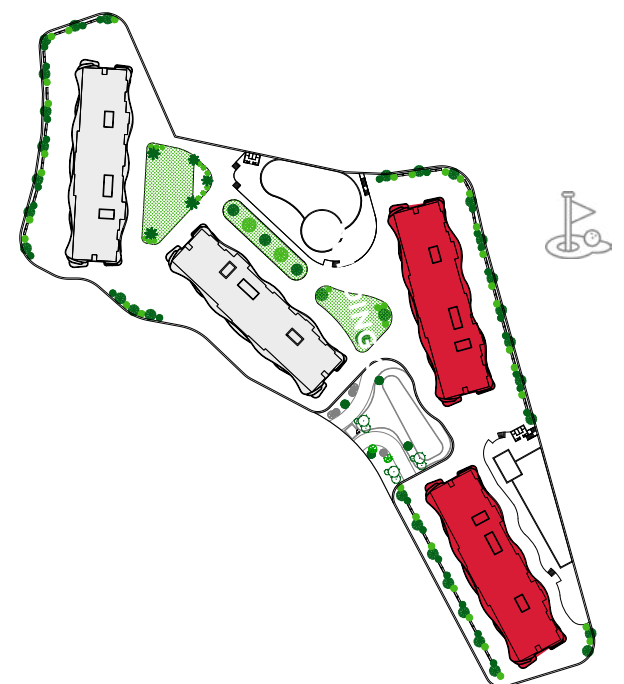


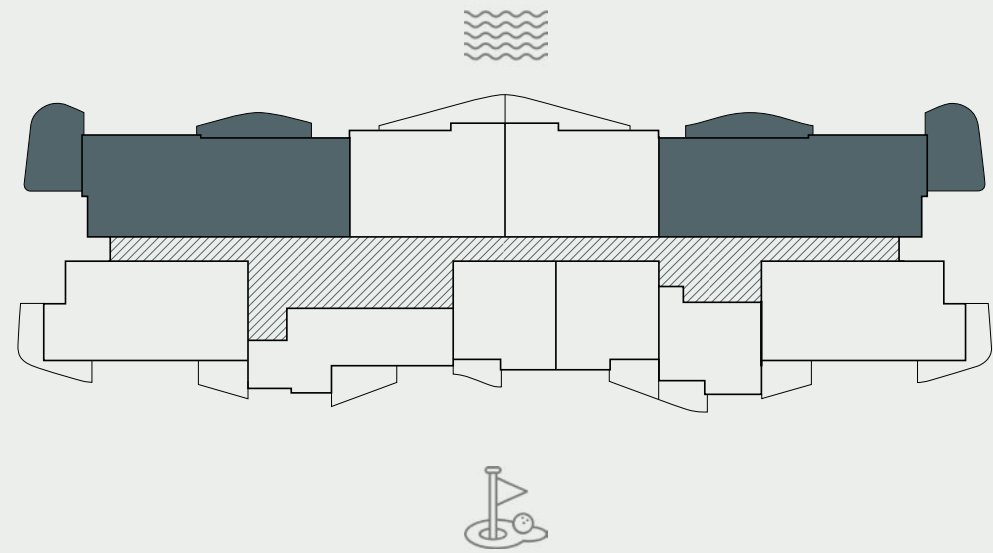
2-BEDS/ TYPE 2D



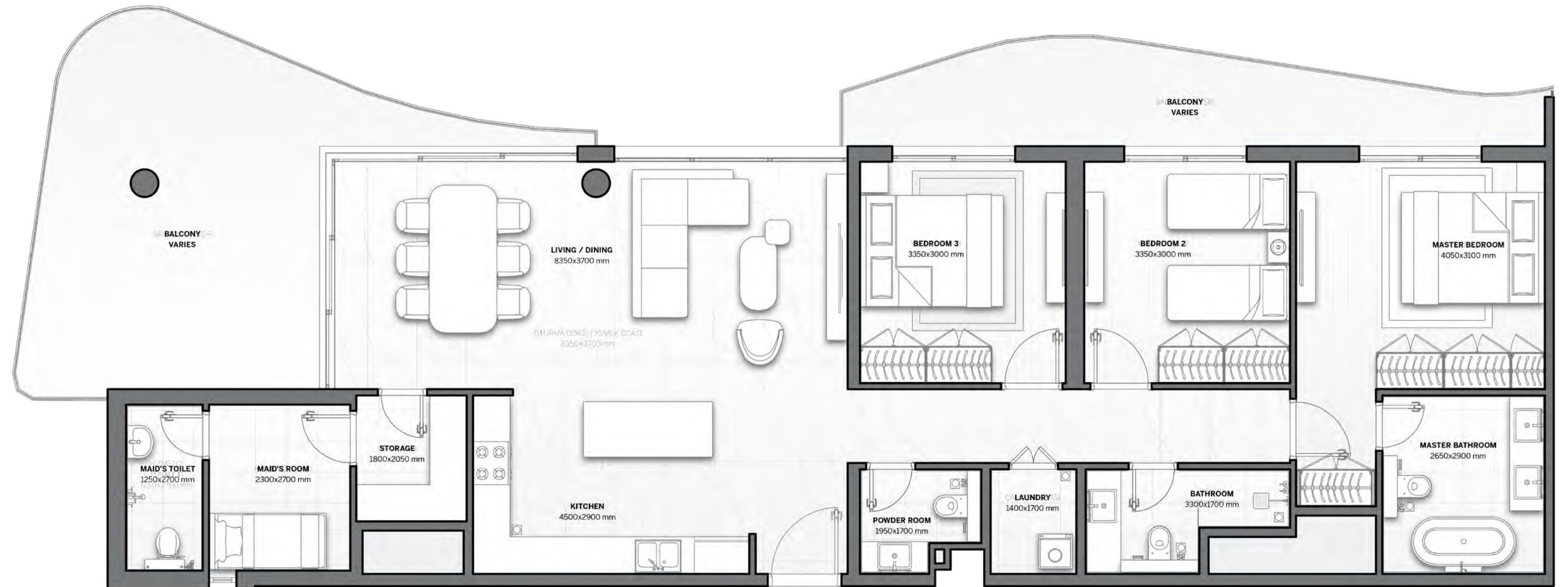
RESIDENCE	SQM	SQFT
Internal Area	94	1012
Balcony Area	21	226
Total Built up Area	115	1238
Parking Space	1	

Disclaimer: All pictures, plans, layouts, information, data and details included in this brochure are indicative only and may change at any time up to the final 'as built' status in accordance with final designs of the project, regulatory approvals and planning permissions. All accessories and interior finishes such as wallpaper, chandeliers, furniture, electronics, white goods, curtains, hard and soft landscaping, pavements, features, gym, and other elements displayed in the brochure, or between the plot boundary, are not part of the unit and are shown for illustrative purposes only.



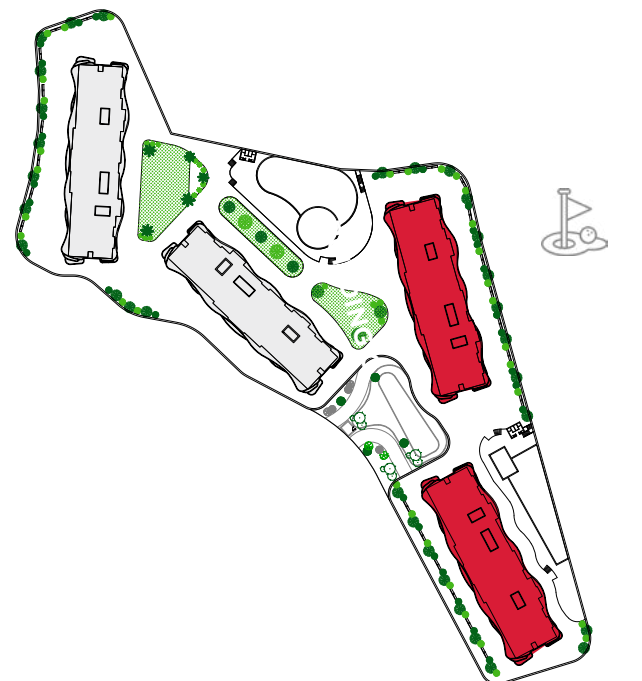


3-BEDS/ TYPE 3A



RESIDENCE	SQM	SQFT
Internal Area	131	1410
Balcony Area	37 - 38	398 - 409
Total Built up Area	168 - 169	1808 - 1819
Parking Space	2	

Disclaimer: All pictures, plans, layouts, information, data and details included in this brochure are indicative only and may change at any time up to the final 'as built' status in accordance with final designs of the project, regulatory approvals and planning permissions. All accessories and interior finishes such as wallpaper, chandeliers, furniture, electronics, white goods, curtains, hard and soft landscaping, pavements, features, gym, and other elements displayed in the brochure, or between the plot boundary, are not part of the unit and are shown for illustrative purposes only.



A PARTNERSHIP BETWEEN





DarGlobal PLC is an international real estate developer specializing in exclusive luxury developments across the world's most coveted cosmopolitan cities.

Catering to global citizens seeking prime investments, second homes, and luxury living, DarGlobal transforms real estate into economic catalysts, unlocking opportunities for both investors and the countries it enters.

DarGlobal has partnered with over 10 world-renowned luxury brands, including Trump Organization, Aston Martin, Automobili Lamborghini, ELIE SAAB, Marriott Residences, Missoni, Mouawad, Pagani Automobili, W Hotels, and Versace. These collaborations offer unique investment opportunities in global cities, providing both wealth growth and protection.

Listed on the London Stock Exchange, DarGlobal goes beyond property development, it drives economic transformation by attracting international clients and Foreign Direct Investment (FDI). By injecting capital, confidence, and industry expertise, DarGlobal enhances local infrastructure while elevating the global appeal of each destination.

With a presence in 14 international cities across 9 countries, DarGlobal's portfolio spans the United Kingdom, Spain, Greece, Saudi Arabia, the UAE, Oman, and Qatar. The company is also expanding into world-class hospitality, developing luxury hotels in Dubai, the Maldives, and Oman.

To support its international clientele, DarGlobal has sales and customer service offices in New York, London, Marbella, Athens, Dubai, Jeddah, Riyadh, Muscat, and Doha.



OUR OFFICES



MUSCAT, OMAN

Royal Opera House Muscat Shatti Al
Qurum, Muscat,
Sultanate of Oman
T +968 2270 2777

DUBAI, UAE

Jumeirah Emirates Towers
30th Floor, Sheikh Zayed Road.
PO Box 2523, Dubai,
United Arab Emirates
T +971 4562 9616

LONDON, UK

50 Hans Crescent,
Knightsbridge, London,
SW1X 0NA, United Kingdom
T +44 20 8135 4699

MARBELLA, SPAIN

Marbella Club Golden Mile,
Av. Bulevar Príncipe Alfonso
de Hohenlohe, Marbella 29602,
Málaga, Spain
T +34 95112 1221

DOHA, QATAR

Malibu Building,
Lusail Entertainment City,
Doha, Qatar
T +974 4410 8282

RIYADH, KSA

2135 Tahlia St.,
Al Olaya, 12222, Riyadh,
Kingdom of Saudi Arabia
T +966 800 118 8081

JEDDAH, KSA

Ash Shati, 23613,
King Abdulaziz Road, Jeddah,
Kingdom of Saudi Arabia
T +966 800 118 8081

NEW YORK CITY, USA

19th floor - Trump Tower
New York, 725 5th Ave,
NY 10022, USA
T +1 212 715 1067

For more information on
The Great Escape 2
please call +968 2270 2777





DARGLOBAL.CO.UK