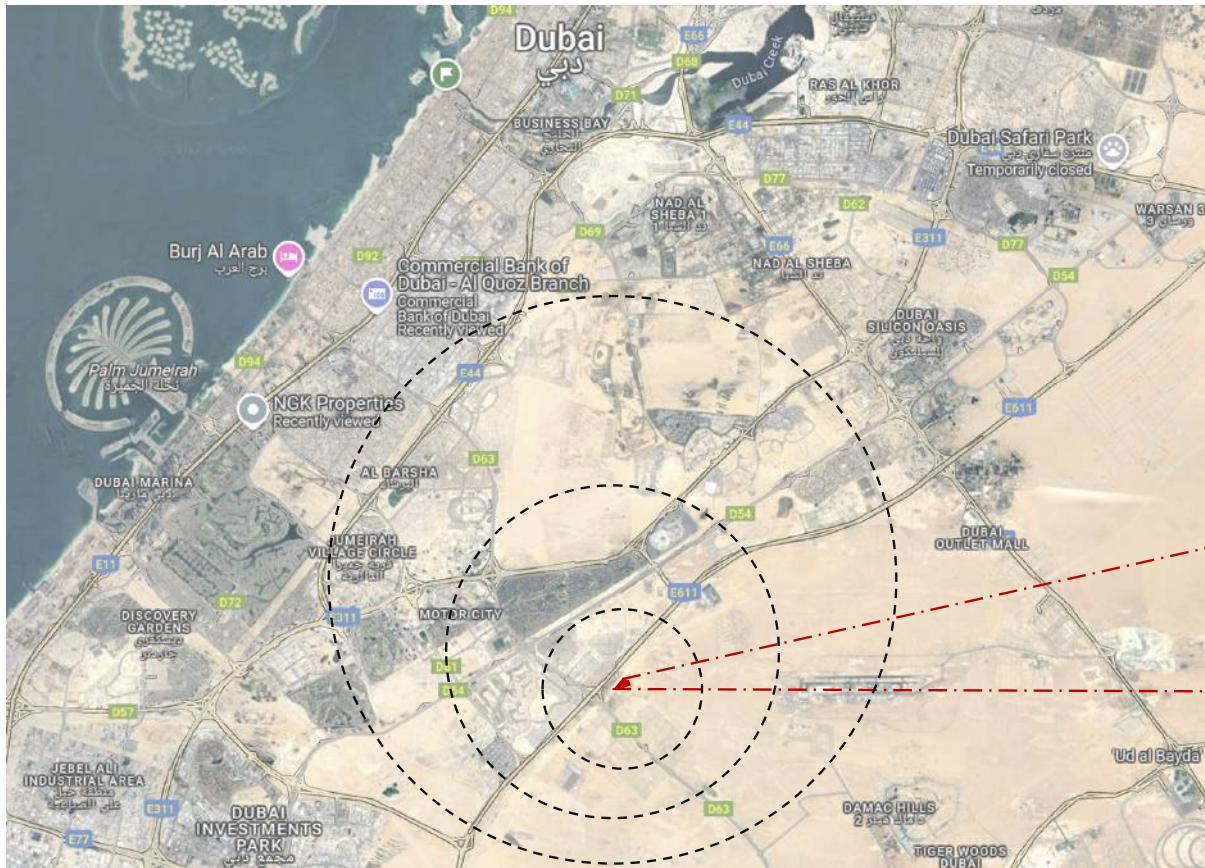


An aerial photograph of a tropical beach. The left side of the image shows clear, turquoise water meeting a narrow strip of white sand. To the right of the beach is a dense grove of palm trees. Long, dark shadows of the palm trees are cast across the white sand, indicating a low sun position. A few small figures of people can be seen on the beach and in the water. The overall scene is bright and idyllic.

# **DAMAC Islands**



# LOCATION



# INSPIRATION

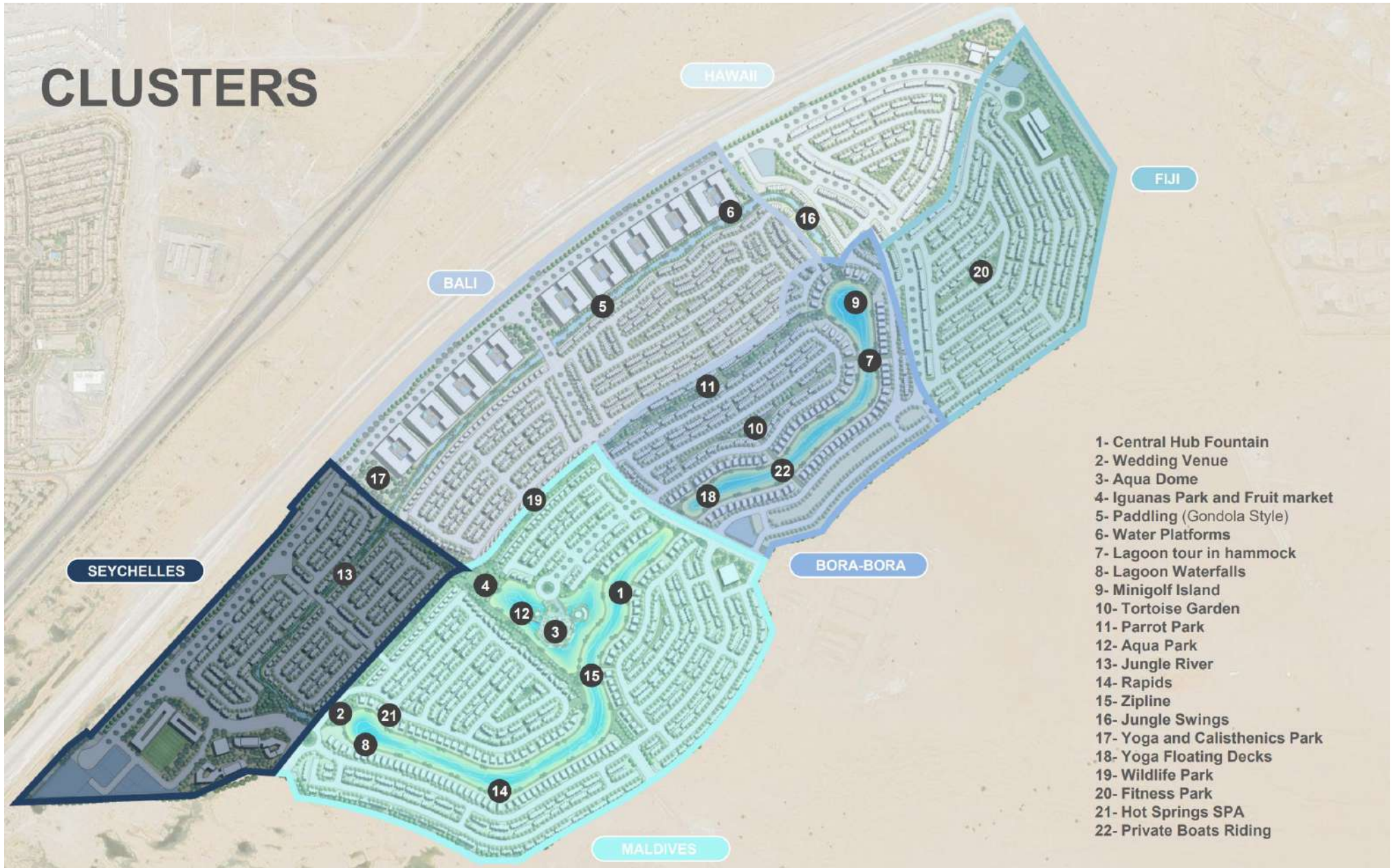


## “Living in Paradise”

Tropical island-themed neighborhoods centered around water. Should tap into the quality of life afforded by the island paradise.  
“Your own Island Getaway”



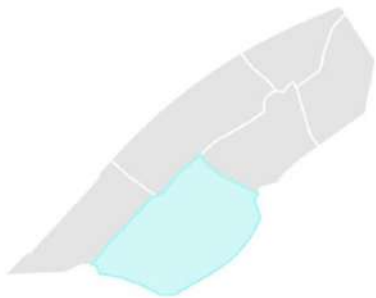
# CLUSTERS



- 1- Central Hub Fountain
- 2- Wedding Venue
- 3- Aqua Dome
- 4- Iguanas Park and Fruit market
- 5- Paddling (Gondola Style)
- 6- Water Platforms
- 7- Lagoon tour in hammock
- 8- Lagoon Waterfalls
- 9- Minigolf Island
- 10- Tortoise Garden
- 11- Parrot Park
- 12- Aqua Park
- 13- Jungle River
- 14- Rapids
- 15- Zipline
- 16- Jungle Swings
- 17- Yoga and Calisthenics Park
- 18- Yoga Floating Decks
- 19- Wildlife Park
- 20- Fitness Park
- 21- Hot Springs SPA
- 22- Private Boats Riding

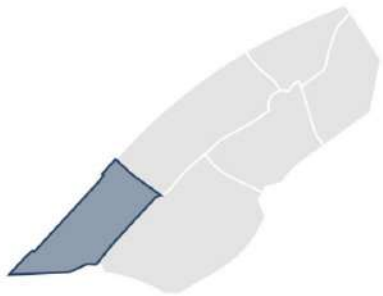


# MALDIVES





# SEYCHELLES

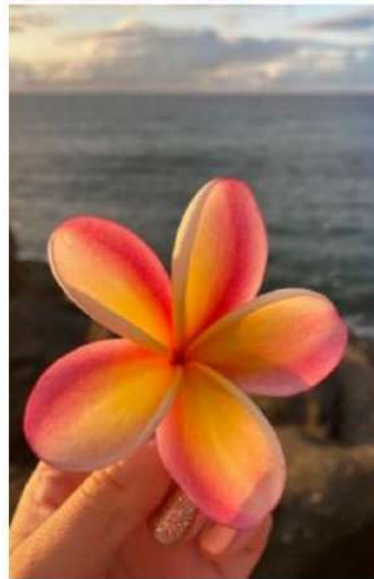
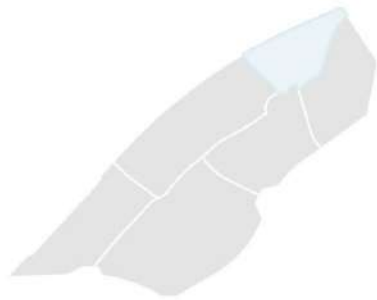




# BORA-BORA

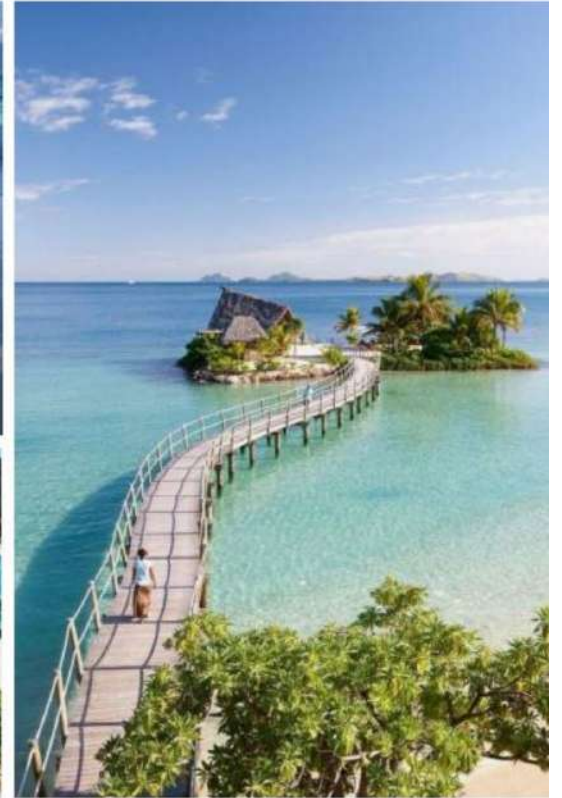
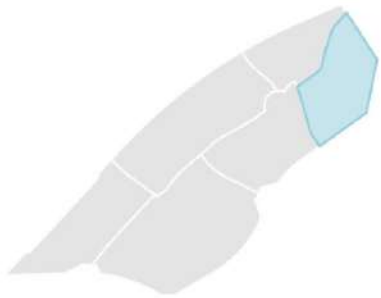


# HAWAII



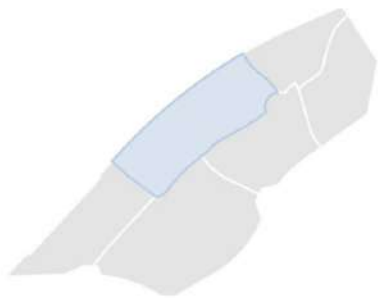


# FIJI



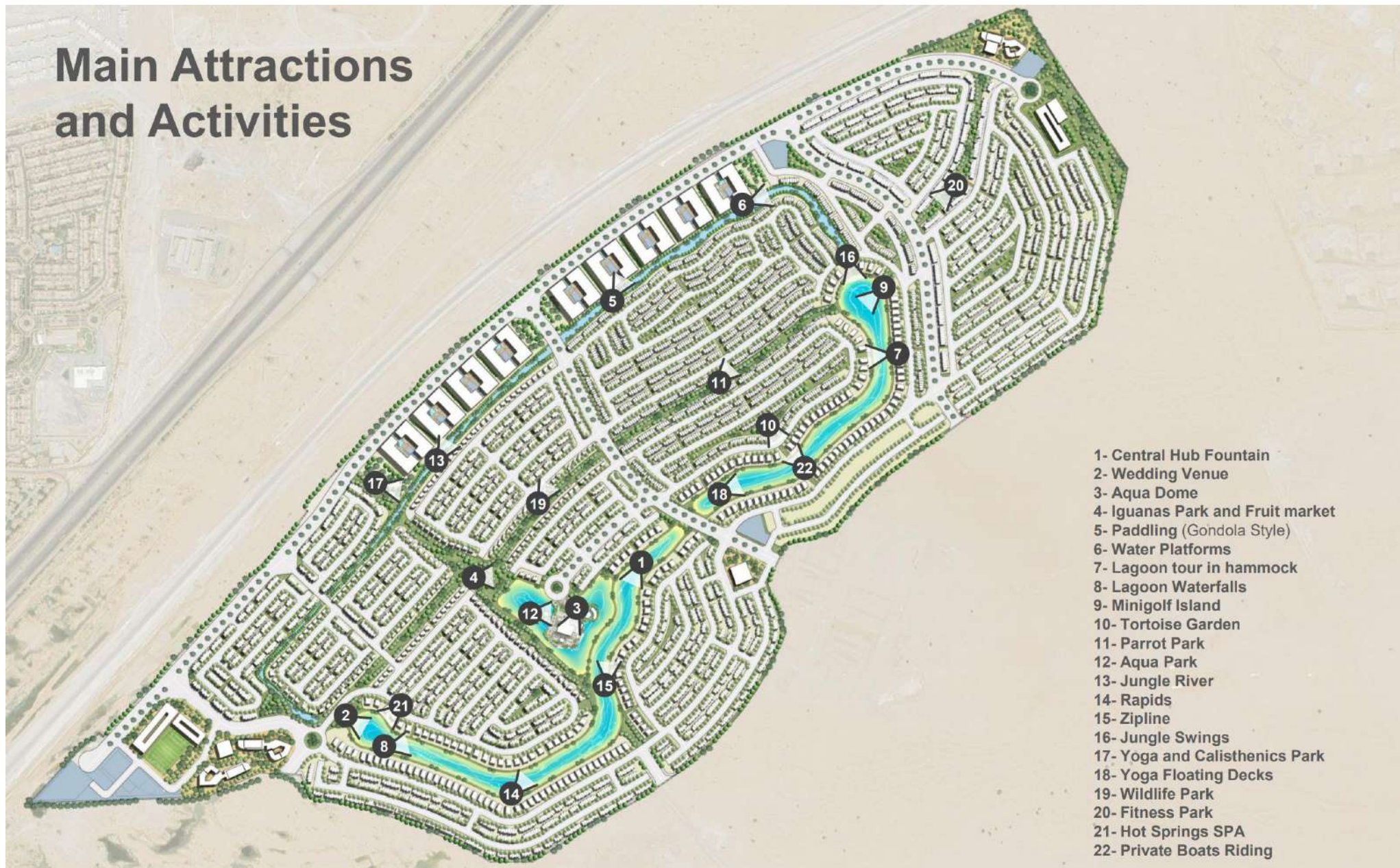


# BALI





# Main Attractions and Activities



- 1- Central Hub Fountain
- 2- Wedding Venue
- 3- Aqua Dome
- 4- Iguanas Park and Fruit market
- 5- Paddling (Gondola Style)
- 6- Water Platforms
- 7- Lagoon tour in hammock
- 8- Lagoon Waterfalls
- 9- Minigolf Island
- 10- Tortoise Garden
- 11- Parrot Park
- 12- Aqua Park
- 13- Jungle River
- 14- Rapids
- 15- Zipline
- 16- Jungle Swings
- 17- Yoga and Calisthenics Park
- 18- Yoga Floating Decks
- 19- Wildlife Park
- 20- Fitness Park
- 21- Hot Springs SPA
- 22- Private Boats Riding



# Central Hub Fountain

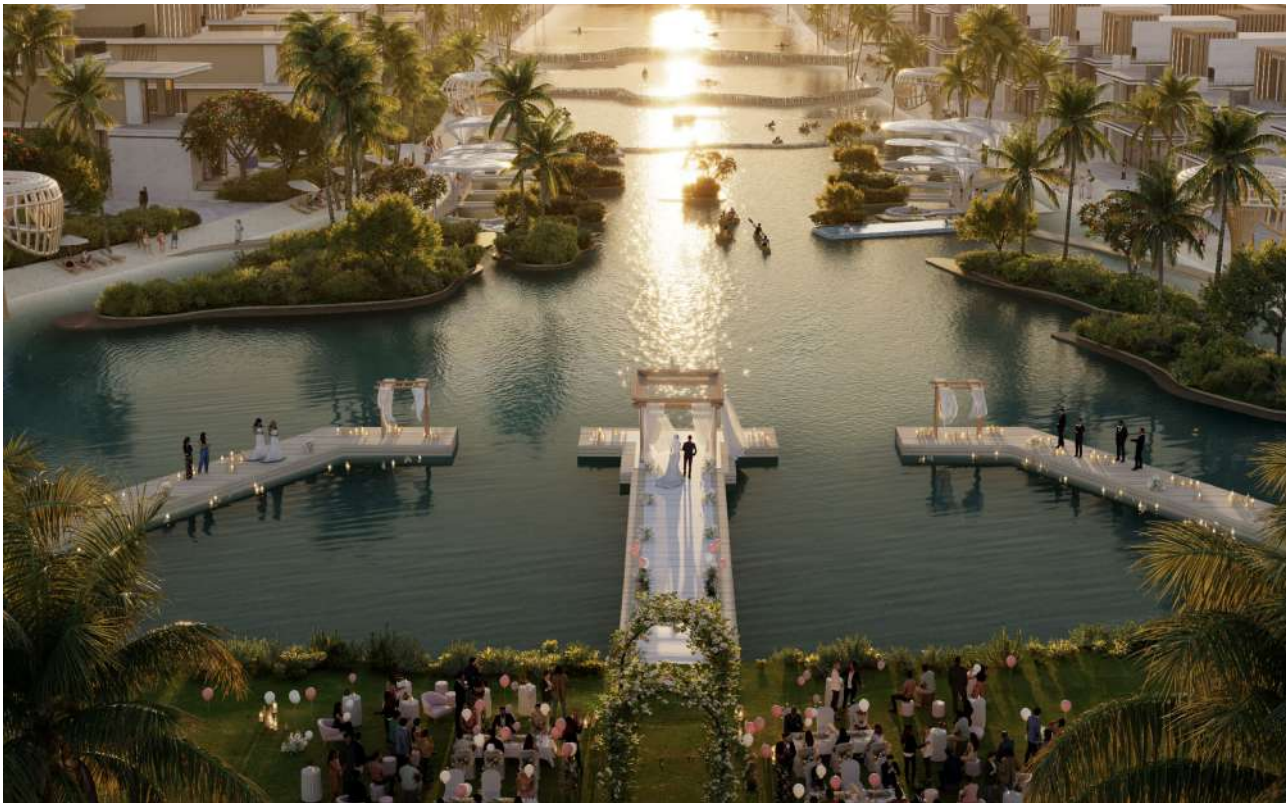
The design must incorporate a dynamic combination of water, fire, and laser elements





# Wedding Venue

Features floating decks and showcase daylight views visible from the access gates





## Aqua Dome

The central hub should feature underwater life projections, creating an immersive aquatic experience. Include dining areas within this main space to enhance the underwater ambiance.





## Iguanas Park and Fruits Market

Vibrant and colorful markets nestled within the lush, green open spaces at the heart of the development





# Jungle River

Experience thrilling adventures in a vibrant jungle river setting





## Jungle Swing

Experience the thrill of a jungle swing over a serene lagoon, blending adventure with breathtaking natural beauty.





## Water Platforms

Serene floating decks perfect for taking in the views, unwinding, and gathering with friends and family





## Lagoon Tour in Hammock

At the rear of the exclusive villas, residents can enjoy the lush greenery and open spaces by visiting the site and relaxing on hammocks.





## Waterfall Lagoon

Gentle waterfalls throughout the site create a soothing ambiance with the sound of flowing water, enhancing the enjoyment of the surrounding greenery.





## Hot springs SPA

Cascading lagoon waterfalls and luxurious hot springs spa facilities. Include infinity-edge pools and outdoor relaxation areas as the perfect conclusion to sports and activity circuits





## Aqua Park

Centrally connected to the Central Hub, this park offers distinct areas for both children and adults. It combines exciting water games with spa and relaxation zones.





## Kayaking & Paddle Boarding

Enjoy a refreshing paddling experience, perfect for relaxation and fun on calm waters.





## Private Boat Parties

Host unforgettable private boat parties, where luxury and adventure meet on the open water





## Zipline

Experience the adrenaline and savor the views, located right behind the most exclusive residential areas





# Yoga Floating Decks

Relaxing floating experiences across the lagoon





# Minigolf Island

Enjoy playing golf in close proximity to the exclusive residential villas





## Tortoise Garden

Distinct Open Spaces characterized by diverse flora and fauna, creating a vibrant and varied natural environment





## Parrot Park and Wildlife Park

A vibrant parrot and wildlife park, offering kids an exciting and educational adventure with exotic species in a lush, natural setting.





# Fitness Parks

Exercising areas within the residential areas





# MASTERPLAN





# MASTERPLAN





# ARCHITECTURE

LV75E - Front





# ARCHITECTURE

LV75E - Rear





# FLOOR PLANS

LV75E

Sellable Area:

1,634 m<sup>2</sup> / 17588.23 ft<sup>2</sup>

A/C: 988 m<sup>2</sup> / 10634.7 ft<sup>2</sup>

GFA: 729 m<sup>2</sup> / 7846.89 ft<sup>2</sup>



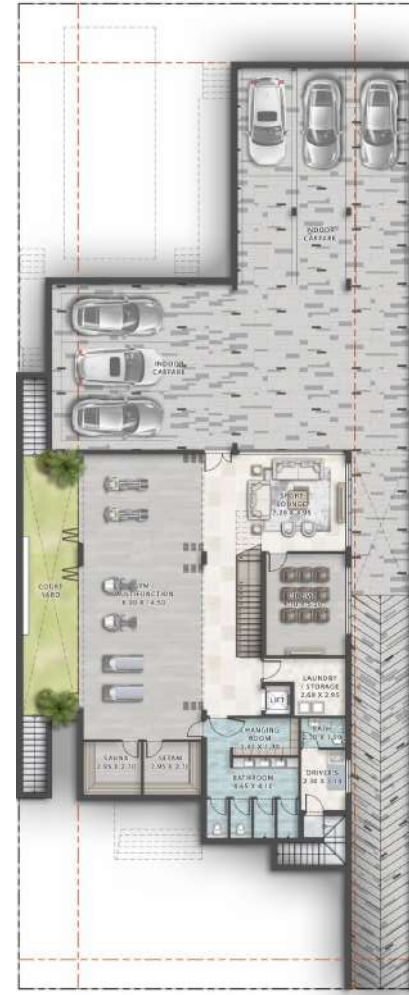
Ground Floor



First Floor



Second Floor



Basement



# ARCHITECTURE

LV55E - Front





# ARCHITECTURE

LV55E - Rear





# FLOOR PLANS

LV55E

Sellable Area:

1,021 m<sup>2</sup> / 10989.95 ft<sup>2</sup>

A/C: 758 m<sup>2</sup> / 8159.04 ft<sup>2</sup>

GFA: 524 m<sup>2</sup> / 5640.29 ft<sup>2</sup>



Ground Floor



First Floor



Second Floor



Basement



# ARCHITECTURE

LV3E - Front





# ARCHITECTURE

LV3E - Rear





# FLOOR PLANS

LV3E



Ground Floor



First Floor

Sellable Area:

425 m<sup>2</sup> / 4574.66 ft<sup>2</sup>

A/C: 345 m<sup>2</sup> / 3713.55 ft<sup>2</sup>

GFA: 345 m<sup>2</sup> / 3713.55 ft<sup>2</sup>



# ARCHITECTURE

Townhouses





# ARCHITECTURE

Townhouses





# FLOOR PLANS

Townhouses

THP-E 5B

Sellable Area:

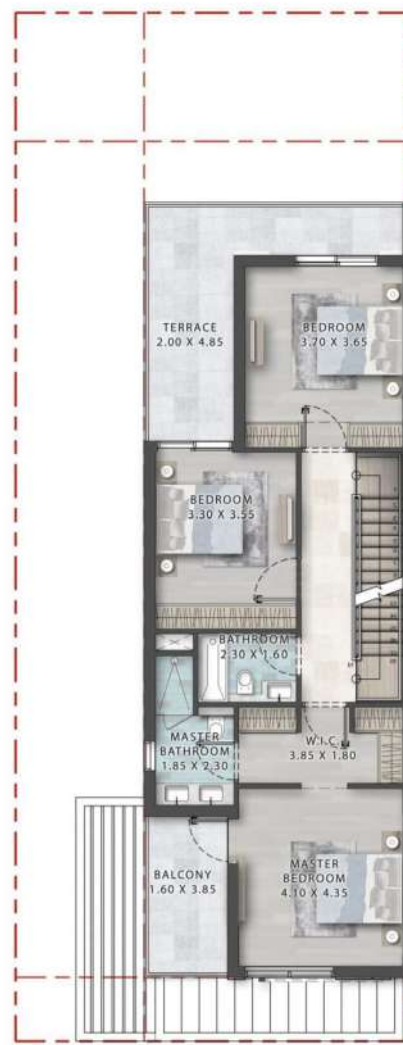
302.54 m<sup>2</sup> / 3256.51 ft<sup>2</sup>

A/C: 215.99 m<sup>2</sup> / 2324.90 ft<sup>2</sup>

GFA: 215.99 m<sup>2</sup> / 2324.90 ft<sup>2</sup>



Ground Floor



First Floor



Second Floor



# FLOOR PLANS

Townhouses

THP-M1 4B

Sellable Area: 205 m<sup>2</sup> / 2206.6 ft<sup>2</sup>

A/C Area: 147.44 m<sup>2</sup> / 1587.03 ft<sup>2</sup>

GFA: 147.44 m<sup>2</sup> / 1587.03 ft<sup>2</sup>

Ground Floor



First Floor

