



T/ERRA V/VA

DESIGN INSPIRED BY
AUTOMOBILI LAMBORGHINI

T/ERRA V/VA



DESIGN INSPIRED BY
AUTOMOBILI LAMBORGHINI



YOU CAN FEEL IT
UNDER YOUR FEET

IT'S A FORCE THAT
RUNS UNDERGROUND

Disclaimer: All pictures, plans, layouts, information, data and details included in this brochure are indicative only and may change at any time up to the final 'as built' status in accordance with final designs of the project, regulatory approvals and planning permissions. All accessories and interior finishes such as wallpaper, chandeliers, furniture, electronics, white goods, curtains, hard and soft landscaping, pavements, features, gym, and other elements displayed in the brochure, or between the plot boundary, are not part of the unit and are shown for illustrative purposes only.





T/ERRA V/VA

MAGNETIC ATTRACTION

A powerful territory and an icon of energy. When they come together, the supernatural happens. The land shakes, the land becomes alive. Tierra Viva Benahavís – Costa Del Sol, is an exclusive residential community of luxury villas, with design inspired by Automobili Lamborghini.

An architectural prodigy brought to life by DarGlobal, debuting for the first time in Spain.



THE MYTH

Founded in 1963, Automobili Lamborghini is the epitome of luxury super sports cars made of innovative technology and futuristic lines. An Italian excellence that is still based in Sant'Agata Bolognese where it all started.

The true essence of Lamborghini DNA is represented in this futuristic and elegant architectural project complemented with interiors inspired by the super sports car design, thanks to incomparable craftsmanship and passion.

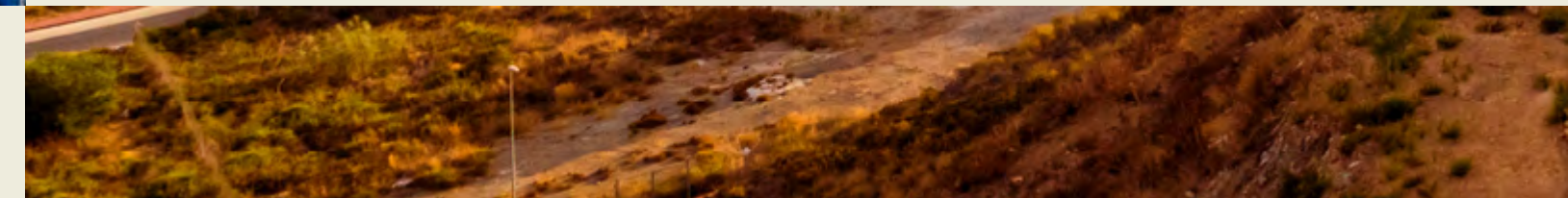




COSTA DEL SOL

Exclusive yet relaxed.
Fashionable yet characteristic.
Connected yet nested.
Costa Del Sol has it all.

Costa del Sol offers a gentle mild climate all year long, with proximity to all the main destinations in Spain and Europe thanks to high-speed trains and an international airport nearby.

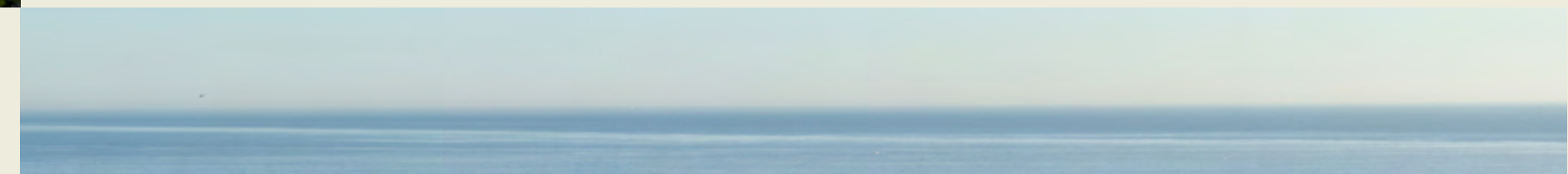


Vibrant and attractive,
Costa Del Sol hosts tons of
stylish clubs, restaurants and
hotels, as well as shopping
areas, exclusive marinas and
breathtaking beaches.



BENAHAVÍS

Benahavís ranks as one of the wealthiest municipalities in Spain thanks to the luxurious golf clubs and resorts that surround the area. In recent years, it has emerged as one of the most desirable locations on Costa del Sol to buy property, in a natural haven of peace and beauty within easy reach of Marbella.





GENIUS LOCI

The Ancient Romans believed some places had divine qualities, Tierra Viva is one of them. Nestled on divine hills outside Los Jaralillos, in the exclusive area of Benahavís, the property is located just 8 minutes away from Marbella and 5 minutes from the shores.

With 12 golf clubs, charming Andalusian villages and the stylish Puerto Banús in the surroundings, Tierra Viva offers a peaceful retreat in the middle of a vibrant community.



COSTA DEL SOL

DAR
GLOBAL



La Zagaleta

Marbella Club
Golf Resort

BENAHAVIS

T/ERRA V/VA

MARBELLA

Marbella Club
Golden Mile

Nobu Hotel
Marbella

Puerto Banús

Anantara Villa
Padierna Palace

SPAIN

05 MIN	MEDITERRANEAN SHORES
12 MIN	PUERTO BANÚS
16 MIN	MARBELLA CLUB GOLDEN MILE
18 MIN	NOBU HOTEL MARBELLA
40 MIN	GIBRALTAR
45 MIN	MÁLAGA-COSTA DEL SOL AIRPORT

T/ERRA V/VA

PROMINENT POSITION

Tierra Viva is a luxury residential complex of 53 unique villas sitting gently on the side of a hill, with every villa standing on a different height.



MEDITERRANEAN IN THE EYES

The prestigious position of
Tierra Viva overlooking the
coastline, allows every villa
to enjoy endless panoramas of
the Mediterranean Sea.

A soothing vision for the soul.



A PLETHORA OF HIGH-END AMENITIES FEW MINUTES AWAY

Descending from Tierra Viva is Puerto Banús, where a luxurious offering of designer boutiques, sport cars parading, exclusive nightclubs, and fine dining experiences populate the picturesque waterfront.

T/ERRA V/VA



Aerial View of Puerto Banús, Marbella, Malaga, Spain

AN EXCLUSIVE COMMUNITY WITH 24/7 PREMIUM SECURITY

Located within the gated community of Los Jaralillos - Benahavís, Tierra Viva prides itself on providing a private and secure environment for its residents with premium 24/7 security services.



T/ERRA V/VA



Views of Marbella and the Costa Del Sol, as seen from the vantage point of Tierra Viva.

T/ERRA V/VA



PERSONAL PARADISE

Each villa within Tierra Viva comes with its own private pool, offering a chance to create a personal oasis for serene moments and unforgettable memories.



T/ERRA V/VA





PAINITE VILLAS
(5-BEDROOMS)



DIAMANTE VILLA
(6-BEDROOMS)



ZAFIRO VILLAS
(5-BEDROOMS)



ESMERALDA VILLAS
(4-BEDROOMS)

HIDDEN
TREASURES

Sharp lines and finest materials are the unique traits of the luxury villas in Tierra Viva.

As supernatural gems coming out of the land itself, they are named after the most precious stones.

T/ERRA V/VA



PAINITE VILLAS

Experience the privilege of having your luxury car, right next to you, inside your home when you invest in one of Tierra Viva's exclusive Painite Villas. These exceptional residences offer private car lifts.





PAINITE VILLAS

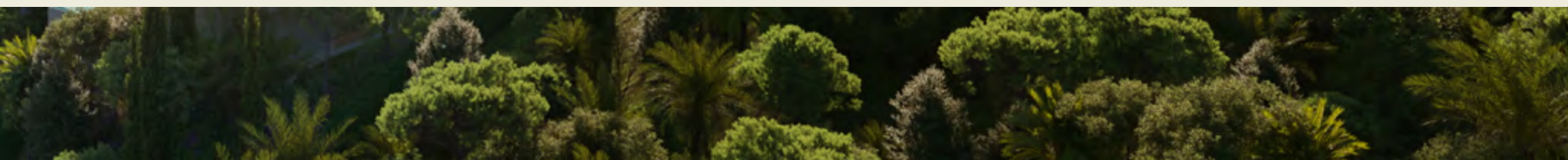
T/ERRA V/VA

T/ERRA V/VA

/ PAINITE VILLAS



NEVER PART WITH
WHAT YOU LOVE



T/ERRA V/VA

/ PAINITE VILLAS



BE TOGETHER ON EVERY LEVEL

The car elevator will lift your car up inside your home with access to 2 levels of your villa.

T/ERRA V/VA

/ PAINITE VILLAS

LIFT IT UP & KEEP IT SAFE

Protect your car from outdoor
challenges such as bad weather.



T/ERRA V/VA

/ PAINITE VILLAS



T/ERRA V/VA

/ PAINITE VILLAS

DAR
GLOBAL



BEGIN YOUR
DAY WITH THE
SIGHT OF ITS
POLISHED LINES



T/ERRA V/VA

/ PAINITE VILLAS



SHOW IT OFF TO PEOPLE THAT DROP BY

Your house guests can
meet your beloved car,
without ever leaving your
living room.



T/ERRA V/VA

/ PAINITE VILLAS

DAR
GLOBAL



DIAMANTE VILLA

Majestic and superb, the Diamante Villa is spread on four levels, host 6 bedrooms and know no compromises.

Spacious roof terraces with breath-taking Mediterranean Views are the perfect set for family and social gatherings, while the extensive swimming pool and luxuriant gardens make this villas the perfect setting for an unforgettable holiday that can last for a lifetime.





DIAMANTE VILLA

T/ERRA V/VA

T/ERRA V/VA

/ DIAMANTE VILLA







T/ERRA V/VA

/ DIAMANTE VILLA



T/ERRA V/VA



ZAFIRO VILLAS

Refined, classy and sophisticated, the 4-level Zafiro Villas sit gently on the hillside, offering stunning views from every room, especially from the panoramic rooftop. With 5 bedrooms and plenty of common spaces, they feature a wine cellar, a multipurpose room that can easily become a gym and a massive pool area for unforgettable memories.





ZAFIRO VILLAS

T/ERRA V/VA

T/ERRA V/VA

/ ZAFIRO VILLAS



T/ERRA V/VA

/ ZAFIRO VILLAS

Iconic, grand, full of light. Inside the Zafiro Villas everything is sophisticated. Tailor-made finishings and high-end materials enhance the generous open-spaces, for a sublime living experience.



T/ERRA V/VA

/ ZAFIRO VILLAS

DAR
GLOBAL



T/ERRA V/VA

/ ZAFIRO VILLAS



ESMERALDA VILLAS

Every day is a summer day in the Esmeralda Villas, the 4-bedroom residences with glorious terraced gardens and exclusive pool areas.

Here, everything was created to offer the most relaxing and unwinding experience, like the steam & sauna rooms and the home theatre in the basement floor.





ESMERALDA VILLAS

T/ERRA V/VA

T/ERRA V/VA

/ ESMERALDA VILLAS



T/ERRA V/VA

/ ESMERALDA VILLAS





T/ERRA V/VA

/ ESMERALDA VILLAS



T/ERRA V/VA

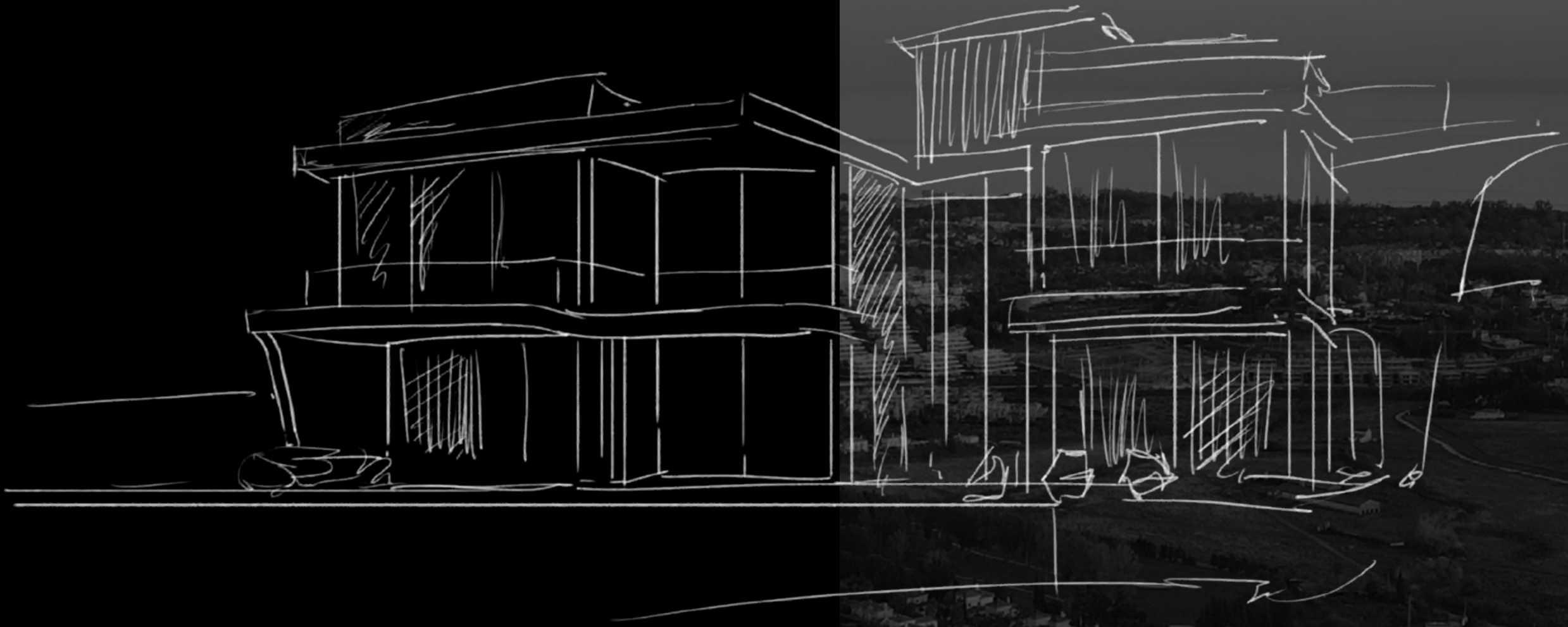
/ ESMERALDA VILLAS



T/ERRA V/VA

/ ESMERALDA VILLAS





SPECIFICATIONS
& FLOOR PLANS

DISCLAIMER

All pictures, plans, layouts, information, data and details included in this brochure are indicative only and may change at any time up to the final 'as built' status in accordance with final designs of the project, regulatory approvals and planning permissions. All accessories and interior finishes such as wallpaper, chandeliers, furniture, electronics, white goods, curtains, hard and soft landscaping, pavements, features, gym, and other elements displayed in the brochure, or between the plot boundary, are not part of the unit and are shown for illustrative purposes only.

SPECIFICATIONS

GENERAL

- EXTERNAL GLAZING: Double Glazed Windows
- BOUNDARY WALL: Concrete Boundary wall on the Sides and Rear
- OUTDOOR SPACE: Area between side and rear boundary wall to the building will be levelled /graded
- ELEVATOR: Passenger Elevator
- SWIMMING POOL: Provided
- HEATING/COOLING: Aerothermia Heating and Cooling system from Daikin, Vaillant or similar
- DRIVEWAY / PARKING: Precast concrete pavers

FOYER

- FLOOR: Local Marble or similar
- SKIRTING: Local Marble or similar
- WALLS: Plastered walls with emulsion paint
- CEILING: Gypsum ceiling with emulsion paint

LIVING ROOM / DINING

- FLOOR: Local Marble or similar
- SKIRTING: Local Marble or similar
- WALLS: Plastered walls with emulsion paint
- CEILING: Gypsum ceiling with emulsion paint

KITCHEN

- FLOOR: Porcelain Marble Look or similar from Cosentino, Inalco or similar
- SKIRTING: Porcelain Marble Look or similar from Cosentino, Inalco or similar
- WALLS: Wall panels
- CEILING: Gypsum ceiling with emulsion paint
- COUNTERTOP: Engineered Stone or similar from Cosentino, Inalco or similar
- CABINETS: Joinery with lacquered or laminate finish
- APPLIANCES: Built-in Appliances (Fridge, Oven, Hob, Hood, and Dishwasher)
- BRAND: Miele or similar

BEDROOMS

- FLOOR: Porcelain Marble Look or similar from Cosentino, Inalco or similar
- SKIRTING: Porcelain Marble Look or similar from Cosentino, Inalco or similar
- WALLS: Plastered walls with emulsion paint
- CEILING: Gypsum ceiling with emulsion paint
- WARDROBE: Joinery with lacquered or laminate finish

BATHROOMS

- FLOOR: Porcelain Marble Look or similar from Cosentino, Inalco or similar
- WALLS: Porcelain Marble Look or similar from Cosentino, Inalco or similar
- CEILING: Moisture resistant gypsum ceiling finished with paint
- COUNTERTOP: High Quality Solid Surface or similar
- JOINERY: Joinery with lacquered / laminate finish
- SANITARY FIXTURES: Duravit , hansgrohe, gessi or similar
- SANITARYWARE: Duravit, Villeroy & Boch or similar
- MIRROR: Included

BASEMENT HALLWAY

- FLOOR: Porcelain Marble Look or similar from Cosentino, Inalco or similar
- SKIRTING: Porcelain Marble Look or similar from Cosentino, Inalco or similar
- WALLS: Plastered walls with emulsion paint from Cosentino, Inalco or similar
- CEILING: Gypsum ceiling with emulsion paint

SPECIFICATIONS

SAUNA & STEAM

Mechanical, Electrical and Plumbing provisions to be provided.

SERVICE KITCHEN

- FLOOR: Porcelain tile or similar from Cosentino, Inalco or similar
- SKIRTING: Porcelain tile or similar from Cosentino, Inalco or similar
- WALLS: Wall panels
- CEILING: Gypsum ceiling with emulsion paint
- COUNTERTOP: Engineered Stone or similar from Cosentino, Inalco or similar
- CABINETS: Joinery with lacquered / laminate finish

SPA ROOM

- FLOOR: Porcelain tile or similar from Cosentino, Inalco or similar
- WALLS: Porcelain tile or similar from Cosentino, Inalco or similar
- CEILING: Moisture resistant gypsum ceiling finished with paint
- COUNTERTOP: High Quality Solid Surface or similar
- JOINERY: Joinery with lacquered / laminate finish
- SANITARY FIXTURES: Duravit or similar
- SANITARYWARE: Duravit, Villeroy & Boch or similar
- MIRROR: Included
- LOCKERS, BENCH AND FURNITURE: not included

MULTIPURPOSE ROOM/GYM

- FLOOR: Porcelain Marble Look or similar from Cosentino, Inalco or similar
- SKIRTING: Porcelain tile or similar from Cosentino, Inalco or similar
- WALLS: Plastered walls with emulsion paint
- CEILING: Gypsum ceiling with emulsion paint

HOME THEATRE

- FLOOR: Porcelain tile or similar from Cosentino, Inalco or similar
- SKIRTING: Porcelain tile or similar from Cosentino, Inalco or similar
- WALLS: Plastered walls with emulsion paint
- CEILING: Gypsum ceiling with emulsion paint
- Any carpet, furniture, and electronics not included.

MAIDS, STORAGE & LAUNDRY

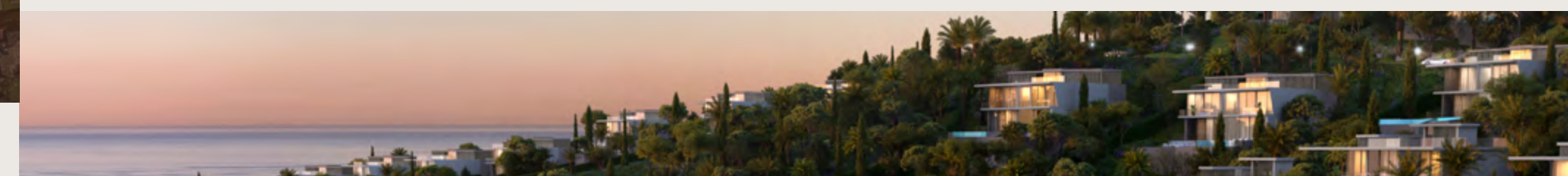
- FLOOR: Porcelain tile or similar from Cosentino, Inalco or similar
- SKIRTING: Porcelain tile or similar from Cosentino, Inalco or similar
- WALLS: Plastered walls with emulsion paint
- CEILING: Gypsum ceiling with emulsion paint

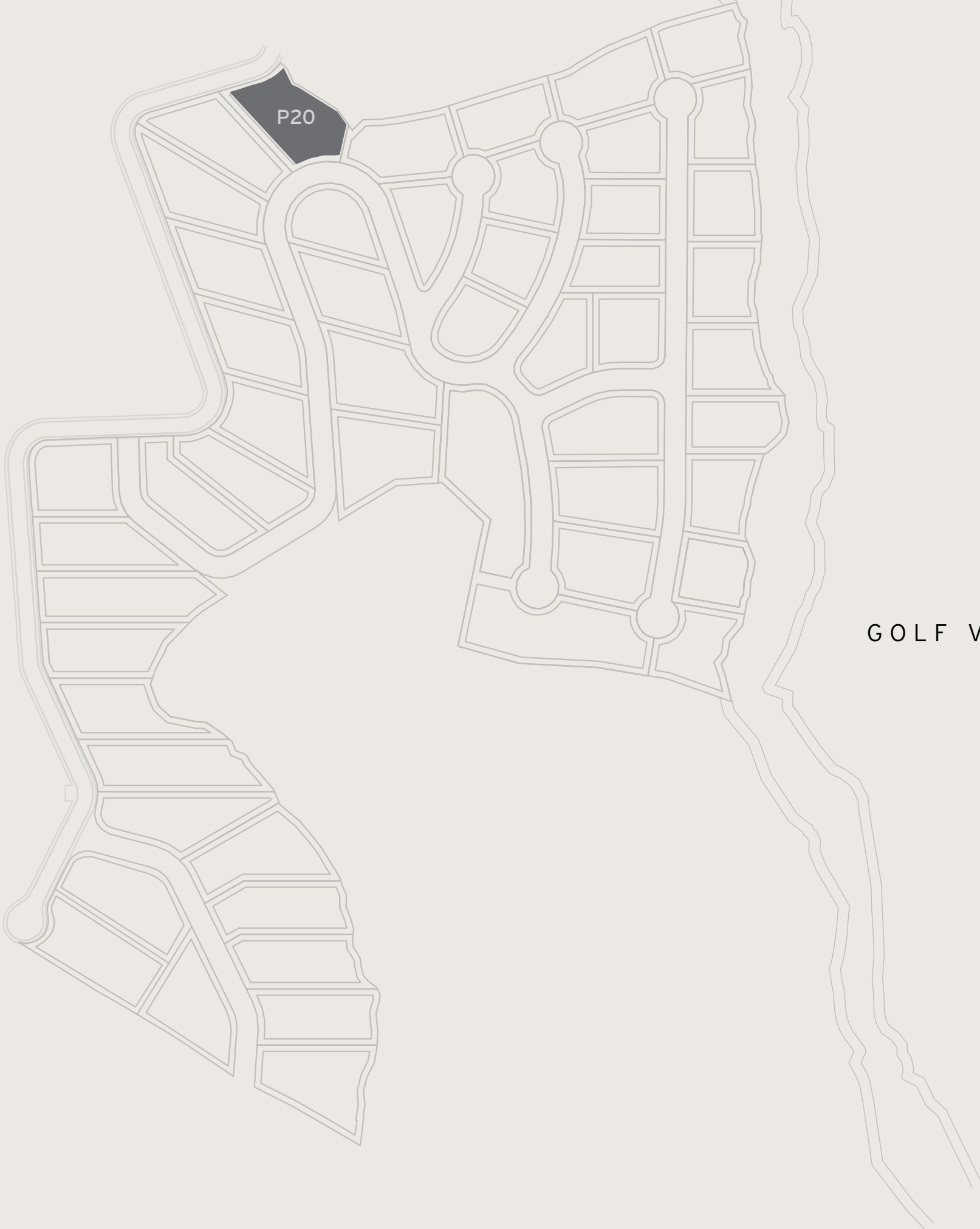
MAIDS BATHROOMS

- FLOOR: Porcelain tile or similar from Cosentino, Inalco or similar
- WALLS: Porcelain tile or similar from Cosentino, Inalco or similar
- CEILING: Moisture resistant gypsum ceiling finished with paint
- COUNTERTOP: Solid Surface or similar
- SANITARY FIXTURES: Duravit or similar
- SANITARYWARE: Duravit, Villeroy & Boch or similar
- MIRROR: Included

TIERRA VIVA MASTERPLAN

-  PAINITE VILLAS
5-bedrooms
-  DIAMANTE VILLA
6-bedrooms
-  ZAFIRO VILLAS
5-bedrooms
-  ESMERALDA VILLAS
4-bedrooms
-  PLOTS





GOLF VIEWS

SEA VIEWS

PAINITE
VILLAS

5 - B E D	S Q M	6 8 9 . 7 8	Disclaimer: All pictures, plans, layouts, information, data and details included in this brochure are indicative only and may change at any time up to the final 'as built' status in accordance with final designs of the project, regulatory approvals and planning permissions. All accessories and interior finishes such as wallpaper, chandeliers, furniture, electronics, white goods, curtains, hard and soft landscaping, pavements, features, gym, and other elements displayed in the brochure, or between the plot boundary, are not part of the unit and are shown for illustrative purposes only.
	S Q F T	7 , 4 2 4 . 7 3	
P L O T S I Z E		S Q M 1 , 5 0 2 - 1 , 6 1 1	S Q F T 1 6 , 1 6 7 - 1 7 , 3 4 0

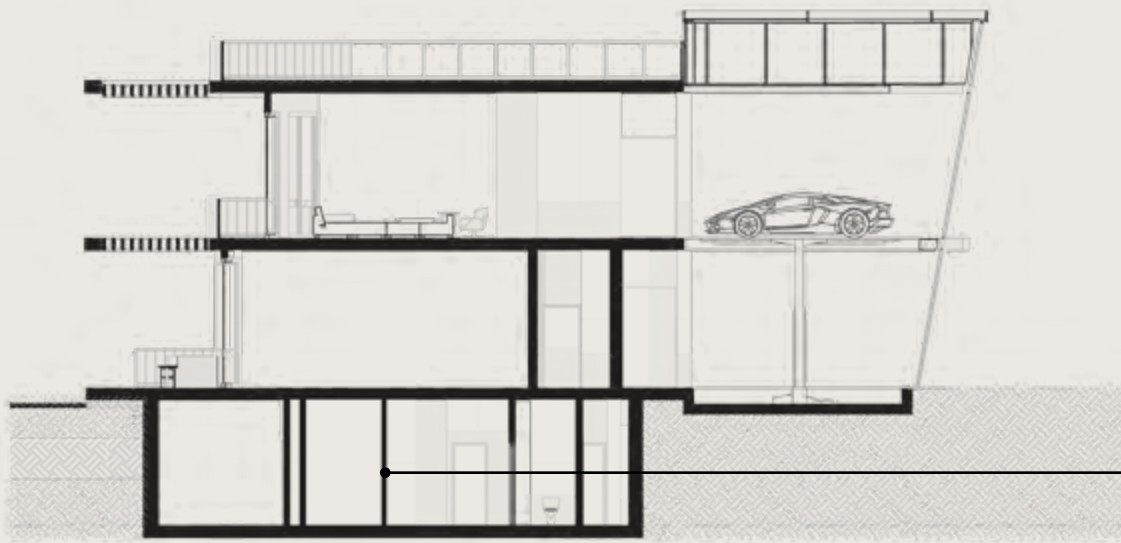
Including total indoor & outdoor built up area.



PAINITE
VILLAS

5 - B E D	S Q M 6 8 9 . 7 8
	S Q F T 7 , 4 2 4 . 7 3
P L O T S I Z E	
S Q M	1 , 5 0 2 - 1 , 6 1 1
S Q F T	1 6 , 1 6 7 - 1 7 , 3 4 0

Including total indoor & outdoor built up area.



BASEMENT

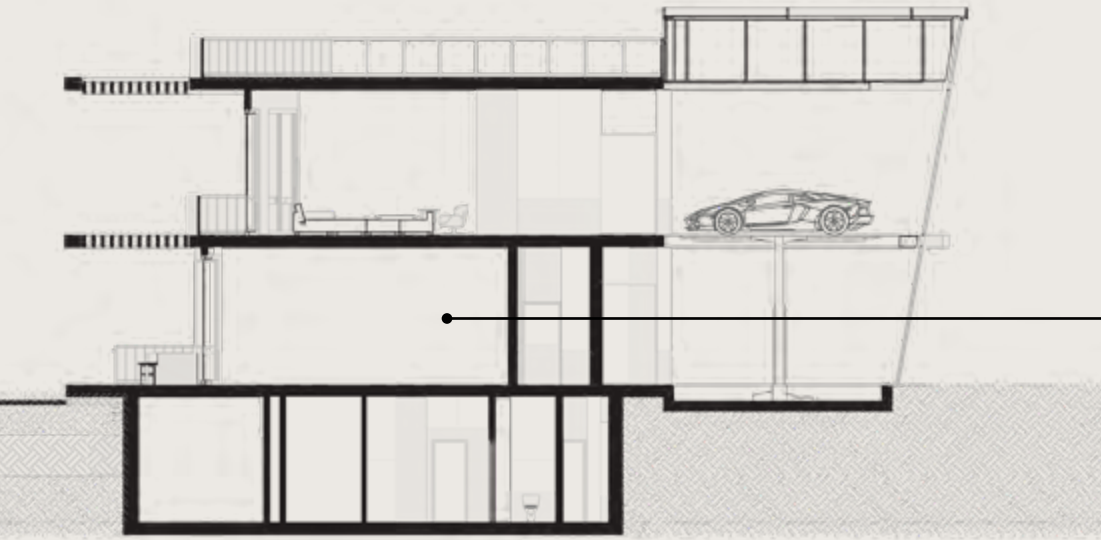


Disclaimer: All pictures, plans, layouts, information, data and details included in this brochure are indicative only and may change at any time up to the final 'as built' status in accordance with final designs of the project, regulatory approvals and planning permissions. All accessories and interior finishes such as wallpaper, chandeliers, furniture, electronics, white goods, curtains, hard and soft landscaping, pavements, features, gym, and other elements displayed in the brochure, or between the plot boundary, are not part of the unit and are shown for illustrative purposes only.

PAINITE
VILLAS

5 - B E D	S Q M 6 8 9 . 7 8
	S Q F T 7 , 4 2 4 . 7 3
P L O T S I Z E	
S Q M	1 , 5 0 2 - 1 , 6 1 1
S Q F T	1 6 , 1 6 7 - 1 7 , 3 4 0

Including total indoor & outdoor built up area.



GROUND
FLOOR

Disclaimer: All pictures, plans, layouts, information, data and details included in this brochure are indicative only and may change at any time up to the final 'as built' status in accordance with final designs of the project, regulatory approvals and planning permissions. All accessories and interior finishes such as wallpaper, chandeliers, furniture, electronics, white goods, curtains, hard and soft landscaping, pavements, features, gym, and other elements displayed in the brochure, or between the plot boundary, are not part of the unit and are shown for illustrative purposes only.



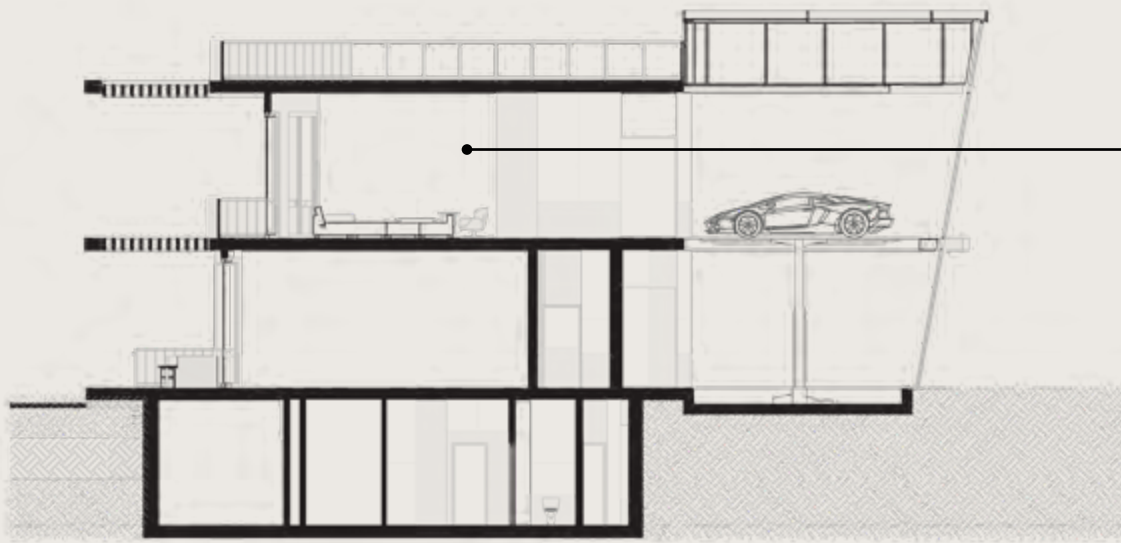
T/ERRA V/VA



PAINITE
VILLAS

5 - B E D	S Q M 6 8 9 . 7 8
	S Q F T 7 , 4 2 4 . 7 3
P L O T S I Z E	
S Q M	1 , 5 0 2 - 1 , 6 1 1
S Q F T	1 6 , 1 6 7 - 1 7 , 3 4 0

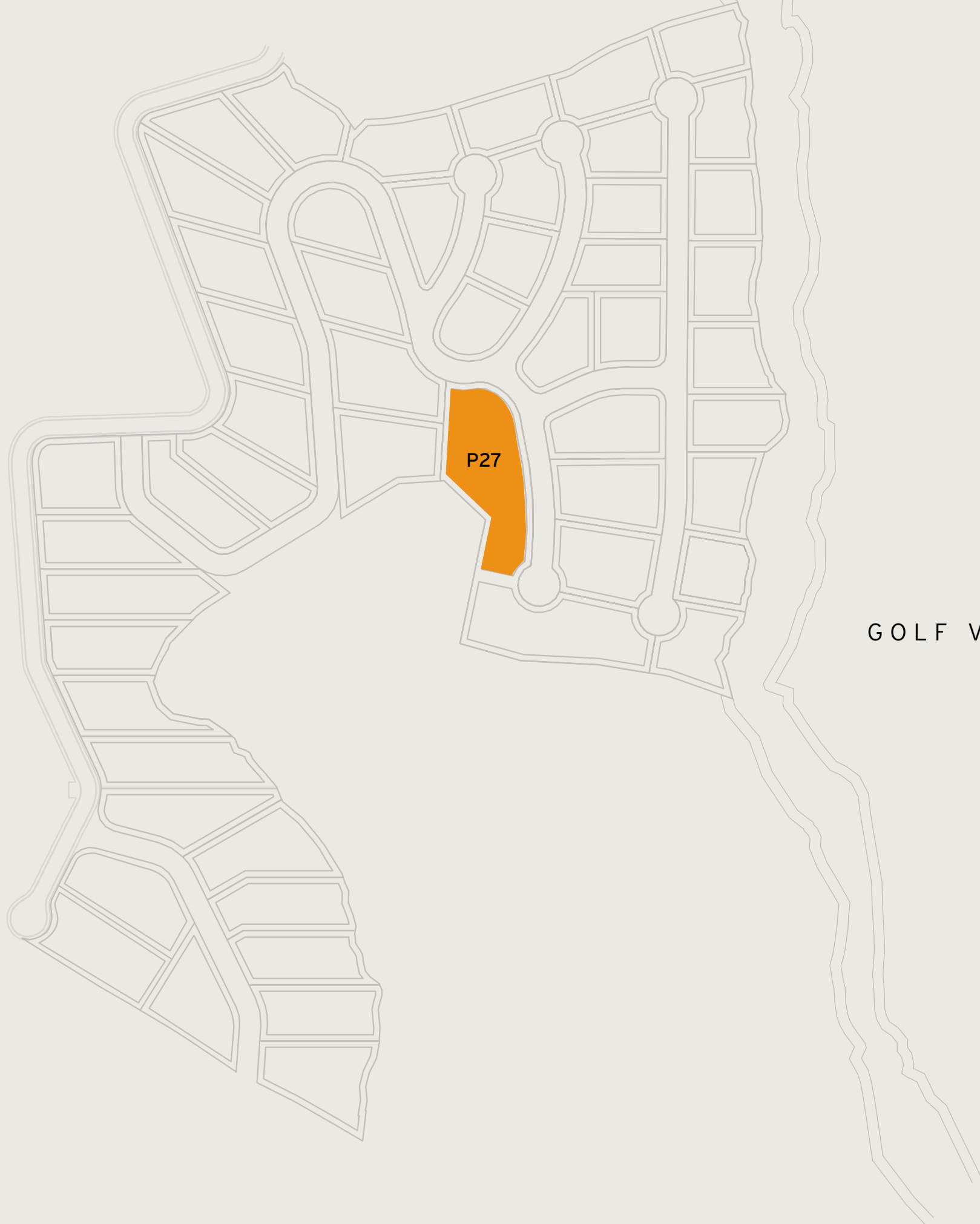
Including total indoor & outdoor built up area.



FIRST
FLOOR



Disclaimer: All pictures, plans, layouts, information, data and details included in this brochure are indicative only and may change at any time up to the final 'as built' status in accordance with final designs of the project, regulatory approvals and planning permissions. All accessories and interior finishes such as wallpaper, chandeliers, furniture, electronics, white goods, curtains, hard and soft landscaping, pavements, features, gym, and other elements displayed in the brochure, or between the plot boundary, are not part of the unit and are shown for illustrative purposes only.



SEA VIEWS

GOLF VIEWS

DIAMANTE VILLA

6 - B E D	S Q M	1,254 - 1,450	Disclaimer: All pictures, plans, layouts, information, data and details included in this brochure are indicative only and may change at any time up to the final 'as built' status in accordance with final designs of the project, regulatory approvals and planning permissions. All accessories and interior finishes such as wallpaper, chandeliers, furniture, electronics, white goods, curtains, hard and soft landscaping, pavements, features, gym, and other elements displayed in the brochure, or between the plot boundary, are not part of the unit and are shown for illustrative purposes only.
	S Q F T	13,498 - 15,608	
P L O T S I Z E		S Q M 2,476 - 2,881	S Q F T 26,651 - 31,011

Including total indoor & outdoor built up area.



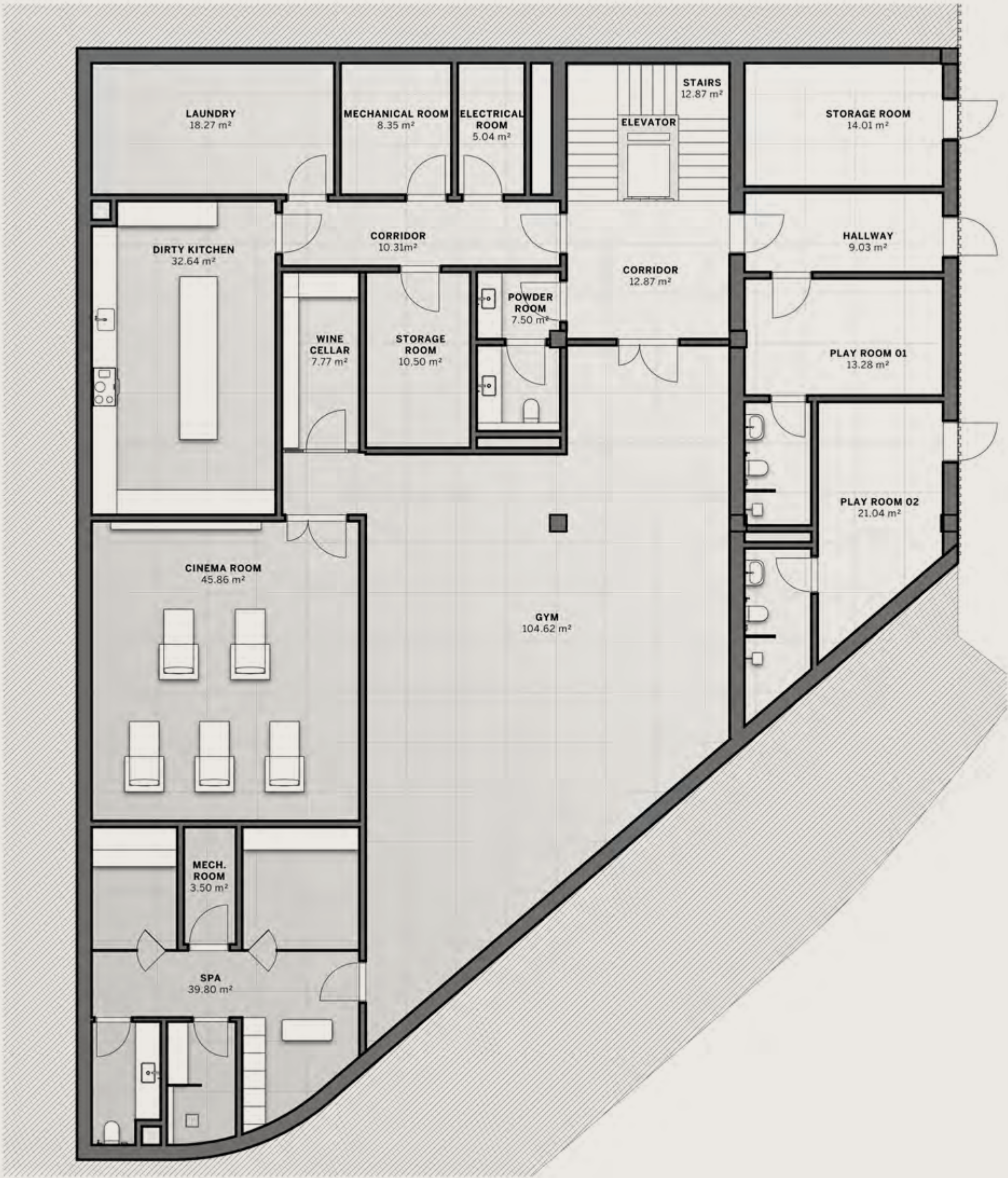
DIAMANTE
VILLA

6 - B E D	SQM 1,254 - 1,450
	SQFT 13,498 - 15,608
PLOT SIZE	
SQM	2,476 - 2,881
SQFT	26,651 - 31,011

Including total indoor & outdoor built up area.



Disclaimer: All pictures, plans, layouts, information, data and details included in this brochure are indicative only and may change at any time up to the final 'as built' status in accordance with final designs of the project, regulatory approvals and planning permissions. All accessories and interior finishes such as wallpaper, chandeliers, furniture, electronics, white goods, curtains, hard and soft landscaping, pavements, features, gym, and other elements displayed in the brochure, or between the plot boundary, are not part of the unit and are shown for illustrative purposes only.



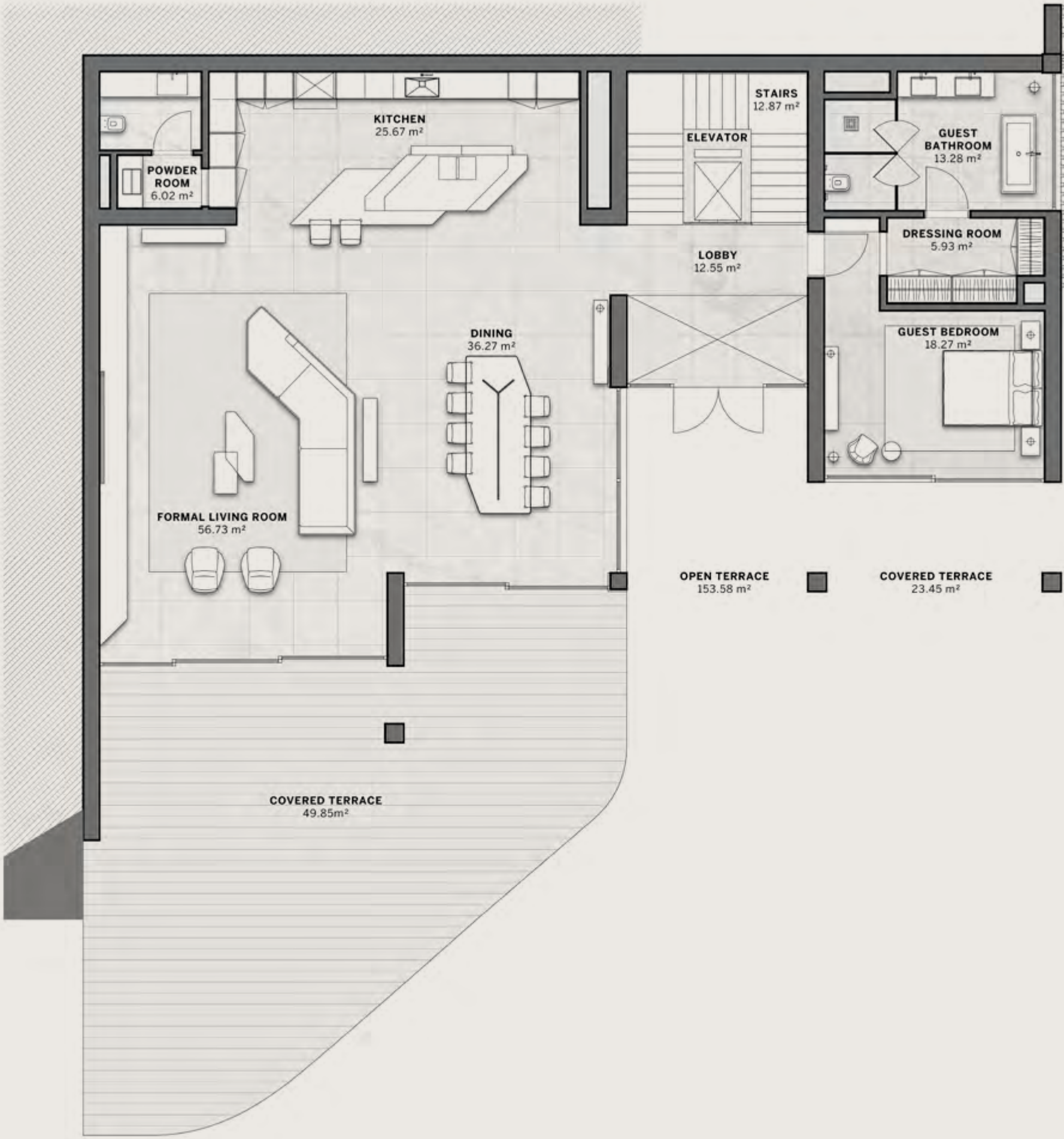
DIAMANTE
VILLA

6 - B E D	S Q M 1,254 - 1,450
	S Q F T 13,498 - 15,608
P L O T S I Z E	
S Q M	2,476 - 2,881
S Q F T	26,651 - 31,011

Including total indoor & outdoor built up area.



GROUND
FLOOR



Disclaimer: All pictures, plans, layouts, information, data and details included in this brochure are indicative only and may change at any time up to the final 'as built' status in accordance with final designs of the project, regulatory approvals and planning permissions. All accessories and interior finishes such as wallpaper, chandeliers, furniture, electronics, white goods, curtains, hard and soft landscaping, pavements, features, gym, and other elements displayed in the brochure, or between the plot boundary, are not part of the unit and are shown for illustrative purposes only.

DIAMANTE
VILLA

6 - B E D	S Q M 1,254 - 1,450
	S Q F T 13,498 - 15,608
P L O T S I Z E	
S Q M	2,476 - 2,881
S Q F T	26,651 - 31,011

Including total indoor & outdoor built up area.



FIRST
FLOOR



Disclaimer: All pictures, plans, layouts, information, data and details included in this brochure are indicative only and may change at any time up to the final 'as built' status in accordance with final designs of the project, regulatory approvals and planning permissions. All accessories and interior finishes such as wallpaper, chandeliers, furniture, electronics, white goods, curtains, hard and soft landscaping, pavements, features, gym, and other elements displayed in the brochure, or between the plot boundary, are not part of the unit and are shown for illustrative purposes only.

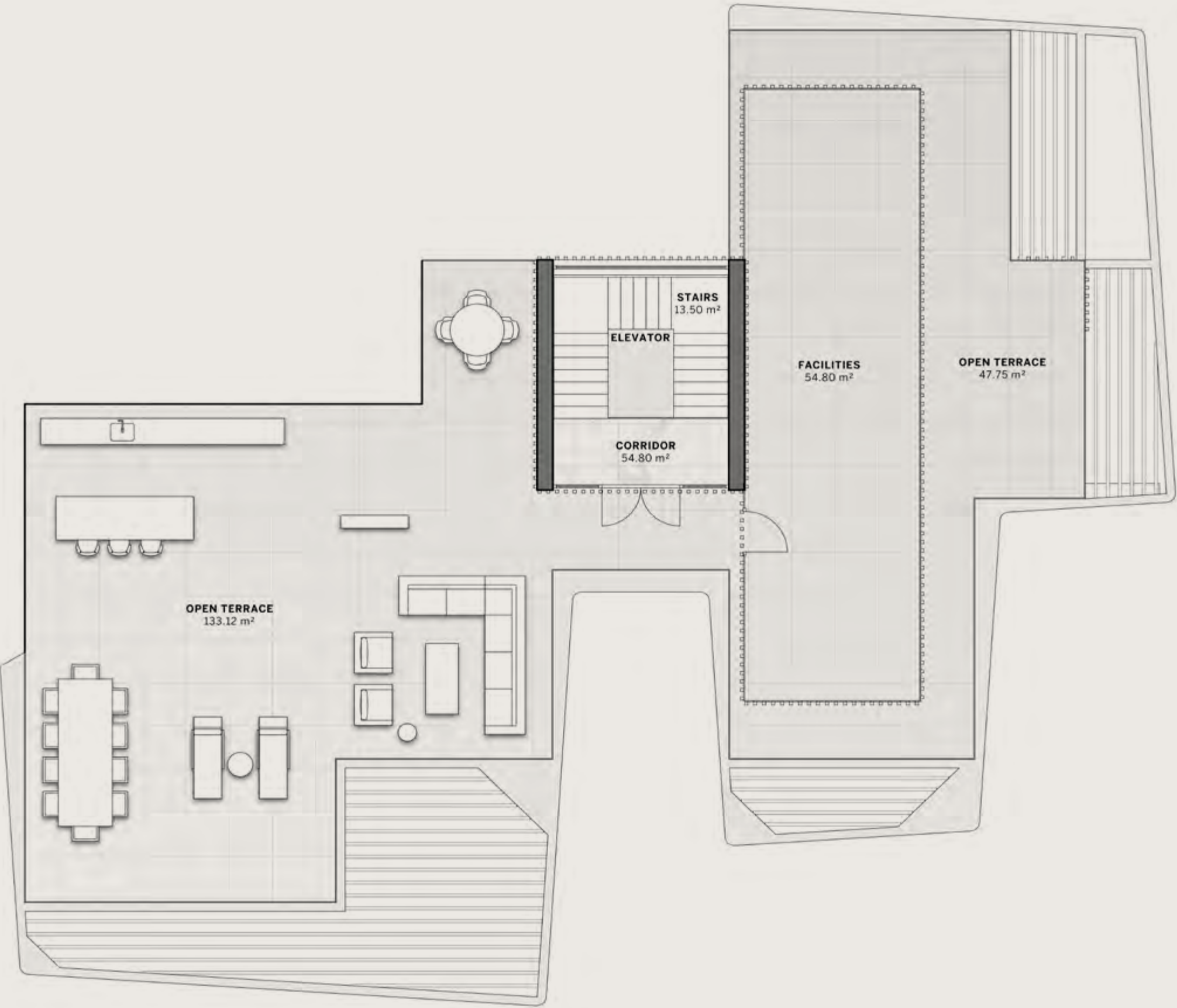
DIAMANTE
VILLA

6 - B E D	S Q M 1,254 - 1,450
	S Q F T 13,498 - 15,608
P L O T S I Z E	
S Q M	2,476 - 2,881
S Q F T	26,651 - 31,011

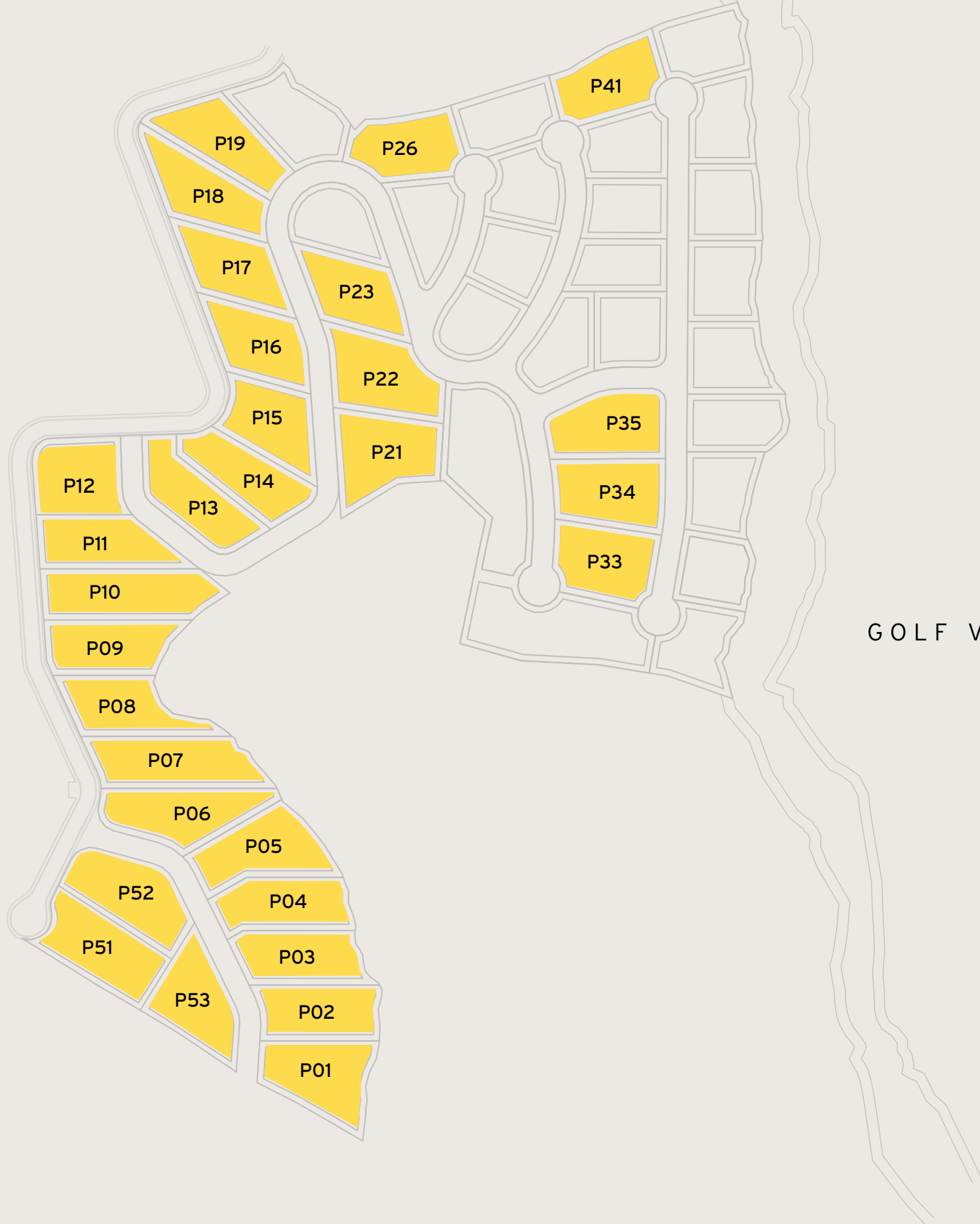
Including total indoor & outdoor built up area.



ROOFTOP
TERRACE



Disclaimer: All pictures, plans, layouts, information, data and details included in this brochure are indicative only and may change at any time up to the final 'as built' status in accordance with final designs of the project, regulatory approvals and planning permissions. All accessories and interior finishes such as wallpaper, chandeliers, furniture, electronics, white goods, curtains, hard and soft landscaping, pavements, features, gym, and other elements displayed in the brochure, or between the plot boundary, are not part of the unit and are shown for illustrative purposes only.



SEA VIEWS

GOLF VIEWS

ZAFIRO VILLAS

5 - B E D	SQM	863 - 1,034	Disclaimer: All pictures, plans, layouts, information, data and details included in this brochure are indicative only and may change at any time up to the final 'as built' status in accordance with final designs of the project, regulatory approvals and planning permissions. All accessories and interior finishes such as wallpaper, chandeliers, furniture, electronics, white goods, curtains, hard and soft landscaping, pavements, features, gym, and other elements displayed in the brochure, or between the plot boundary, are not part of the unit and are shown for illustrative purposes only.
	SQFT	9,289 - 11,130	
PLOT SIZE		SQM 1,389 - 1,874	SQFT 14,951 - 20,172

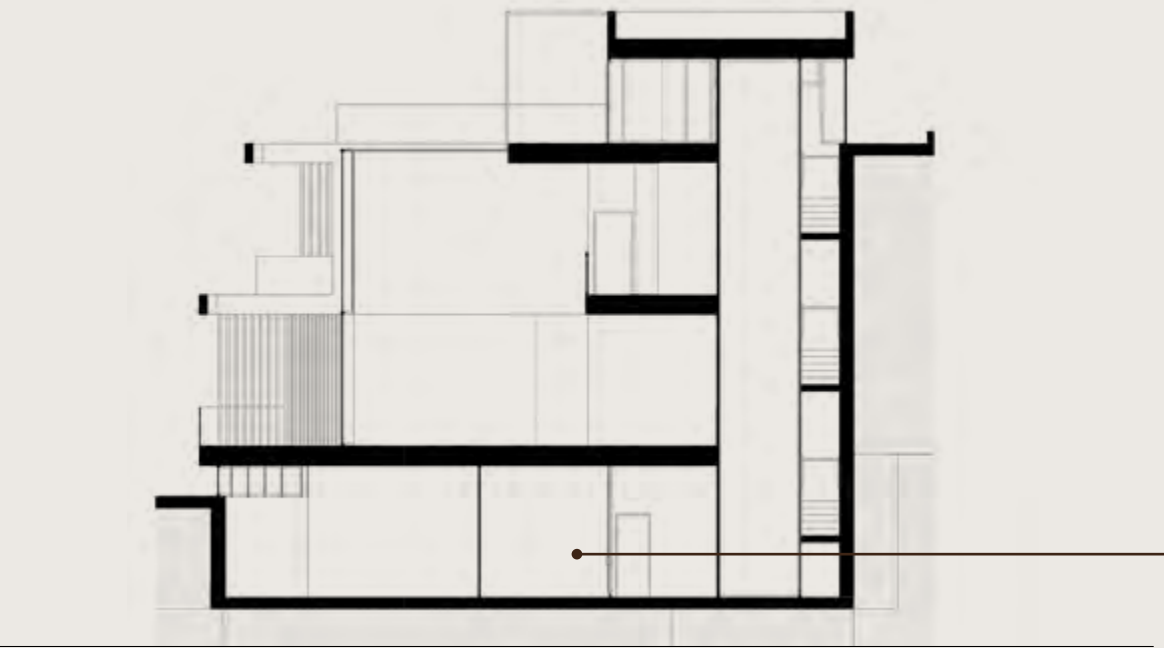
Including total indoor & outdoor built up area.



ZAFIRO
VILLAS

5 - B E D	SQM 863 - 1,034
	SQFT 9,289 - 11,130
PLOT SIZE	
SQM	1,389 - 1,874
SQFT	14,951 - 20,172

Including total indoor & outdoor built up area.



BASEMENT

Disclaimer: All pictures, plans, layouts, information, data and details included in this brochure are indicative only and may change at any time up to the final 'as built' status in accordance with final designs of the project, regulatory approvals and planning permissions. All accessories and interior finishes such as wallpaper, chandeliers, furniture, electronics, white goods, curtains, hard and soft landscaping, pavements, features, gym, and other elements displayed in the brochure, or between the plot boundary, are not part of the unit and are shown for illustrative purposes only.



ZAFIRO
VILLAS

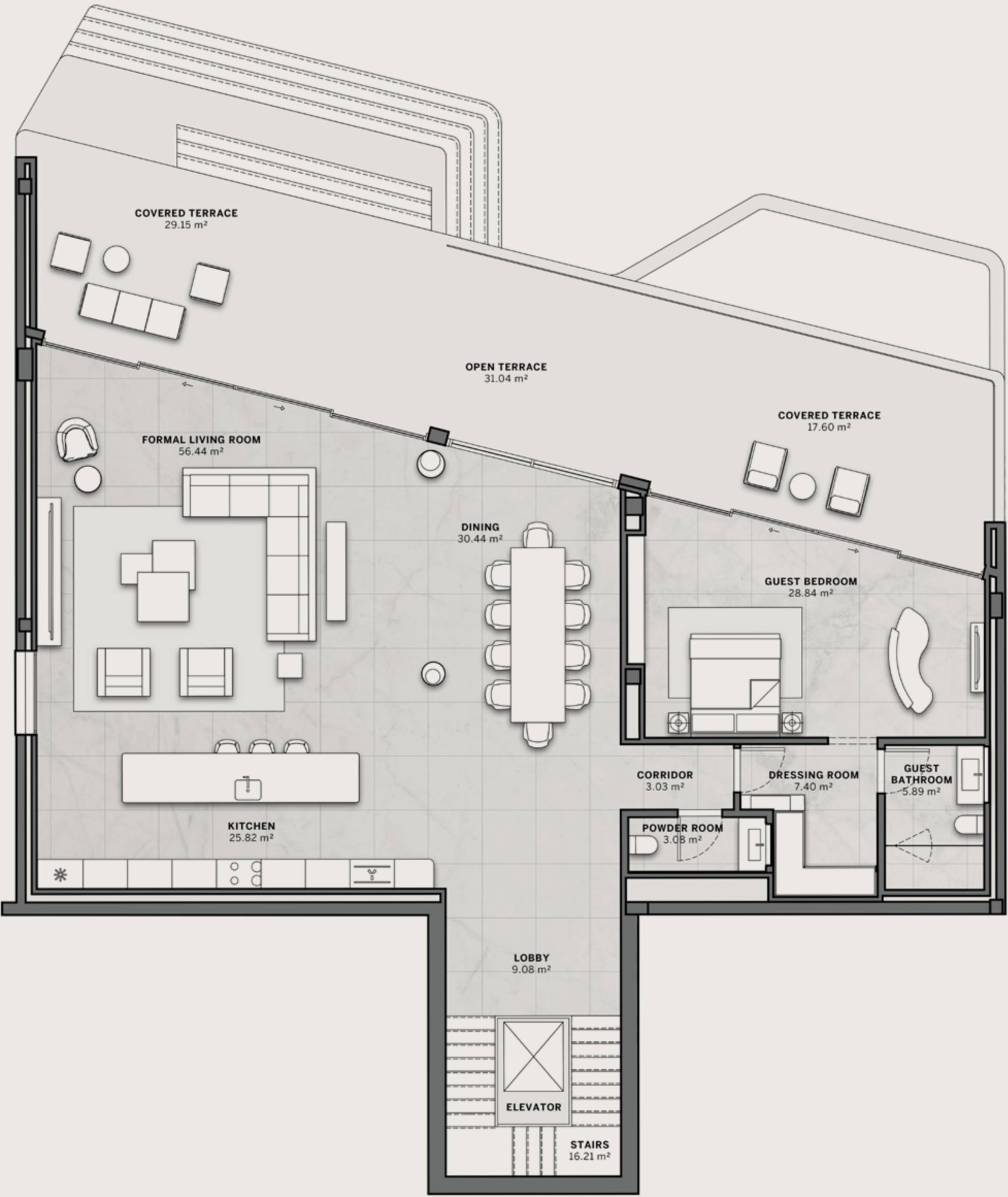
5 - B E D	S Q M 8 6 3 - 1 , 0 3 4
	S Q F T 9 , 2 8 9 - 1 1 , 1 3 0
P L O T S I Z E	
S Q M	1 , 3 8 9 - 1 , 8 7 4
S Q F T	1 4 , 9 5 1 - 2 0 , 1 7 2

Including total indoor & outdoor built up area.



GROUND
FLOOR

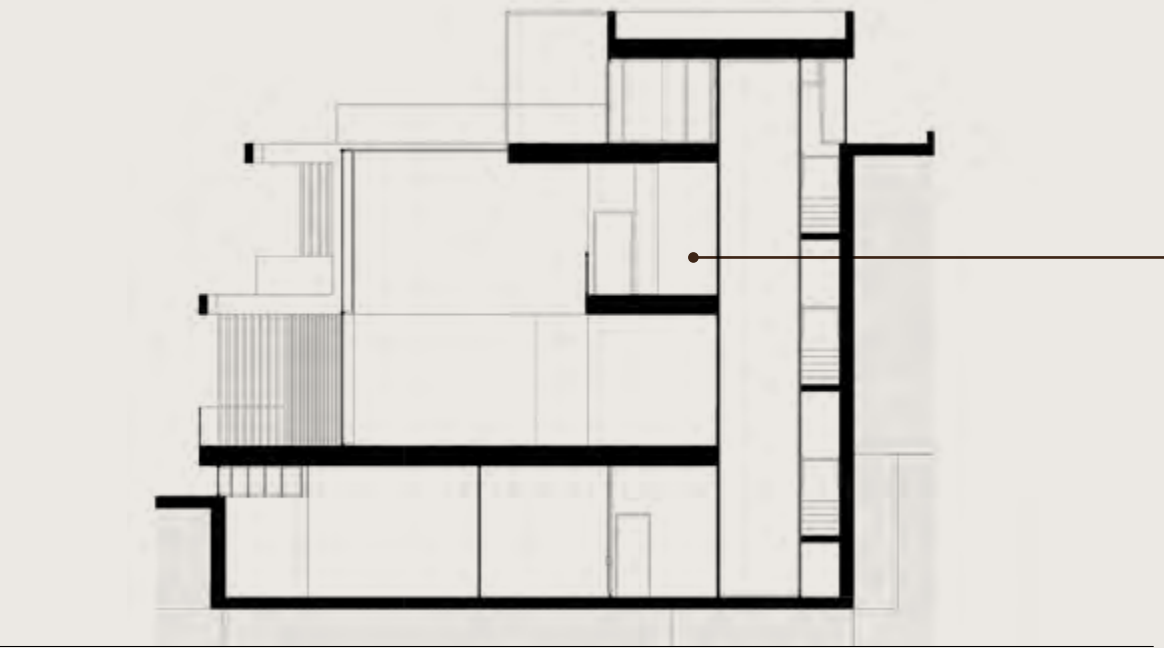
Disclaimer: All pictures, plans, layouts, information, data and details included in this brochure are indicative only and may change at any time up to the final ‘as built’ status in accordance with final designs of the project, regulatory approvals and planning permissions. All accessories and interior finishes such as wallpaper, chandeliers, furniture, electronics, white goods, curtains, hard and soft landscaping, pavements, features, gym, and other elements displayed in the brochure, or between the plot boundary, are not part of the unit and are shown for illustrative purposes only.



ZAFIRO
VILLAS

5 - B E D	S Q M 8 6 3 - 1,0 3 4
	S Q F T 9,289 - 11,130
P L O T S I Z E	
S Q M	1,389 - 1,874
S Q F T	14,951 - 20,172

Including total indoor & outdoor built up area.



FIRST
FLOOR

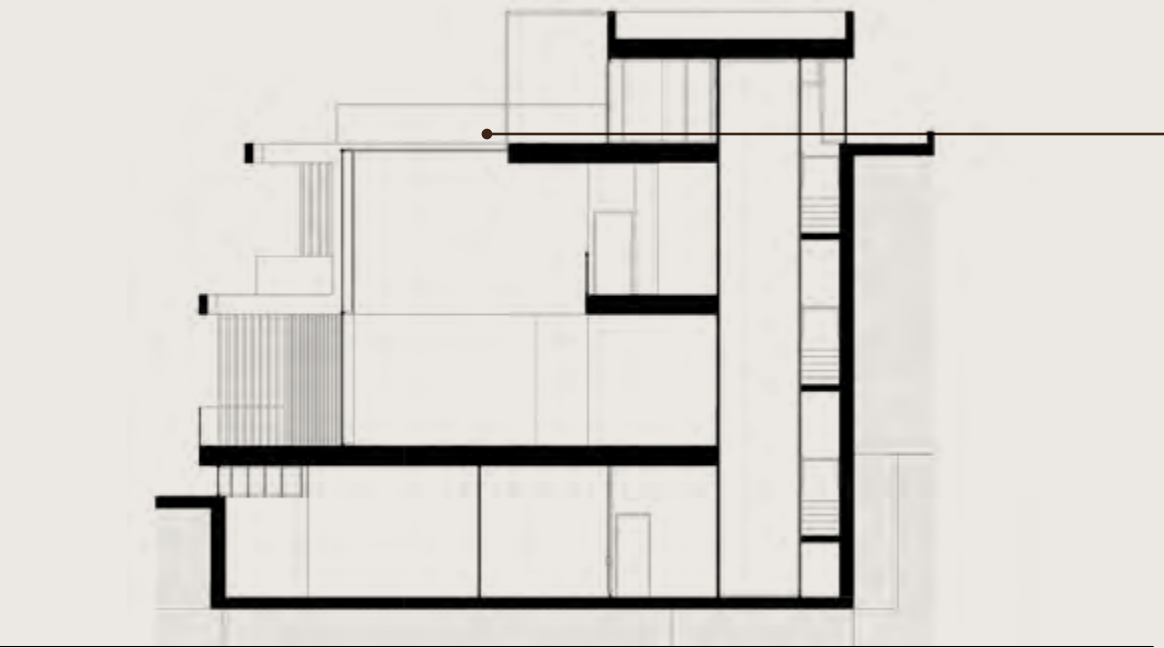


Disclaimer: All pictures, plans, layouts, information, data and details included in this brochure are indicative only and may change at any time up to the final 'as built' status in accordance with final designs of the project, regulatory approvals and planning permissions. All accessories and interior finishes such as wallpaper, chandeliers, furniture, electronics, white goods, curtains, hard and soft landscaping, pavements, features, gym, and other elements displayed in the brochure, or between the plot boundary, are not part of the unit and are shown for illustrative purposes only.

ZAFIRO
VILLAS

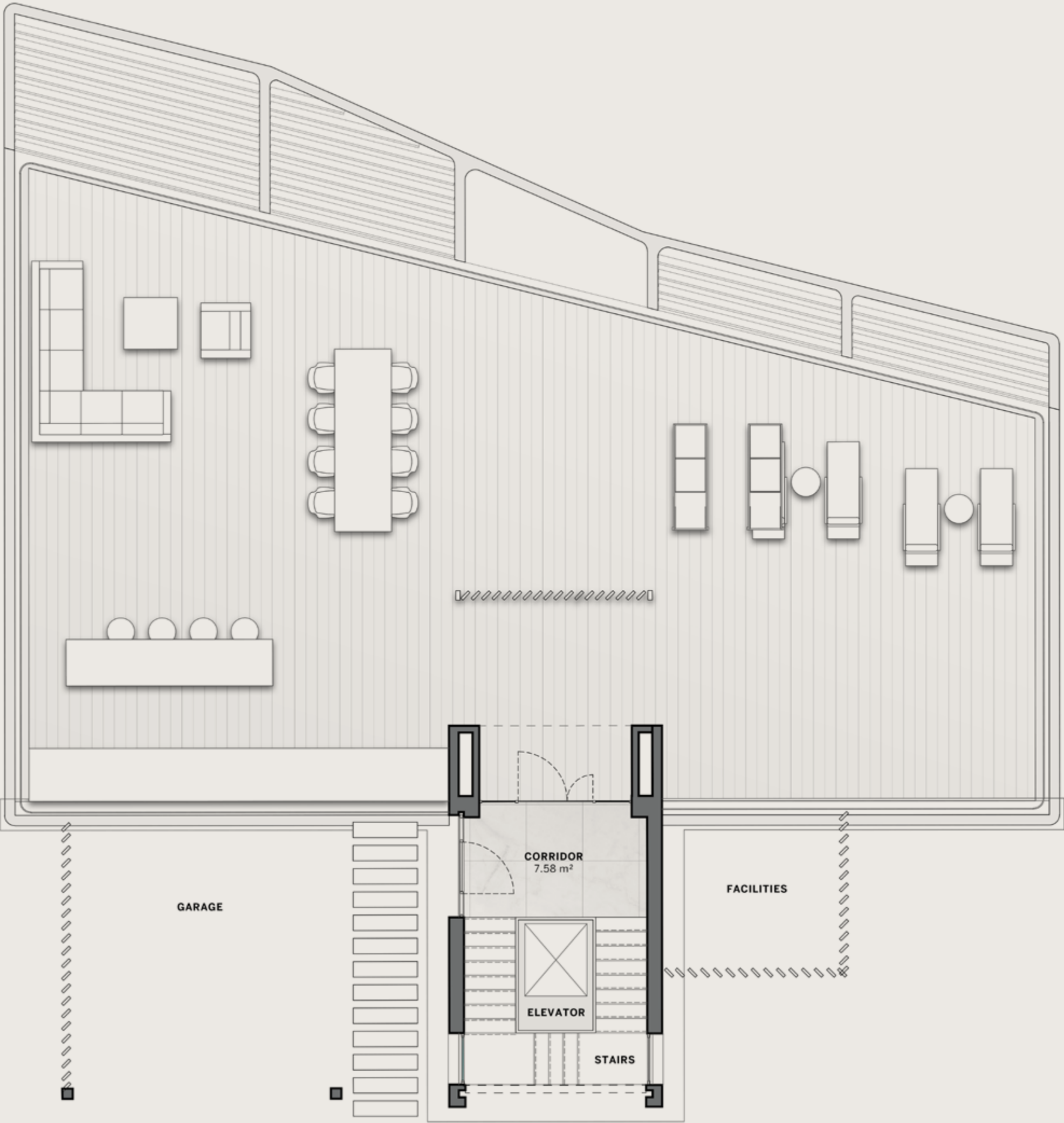
5 - B E D	S Q M 8 6 3 - 1 , 0 3 4
	S Q F T 9 , 2 8 9 - 1 1 , 1 3 0
P L O T S I Z E	
S Q M	1 , 3 8 9 - 1 , 8 7 4
S Q F T	1 4 , 9 5 1 - 2 0 , 1 7 2

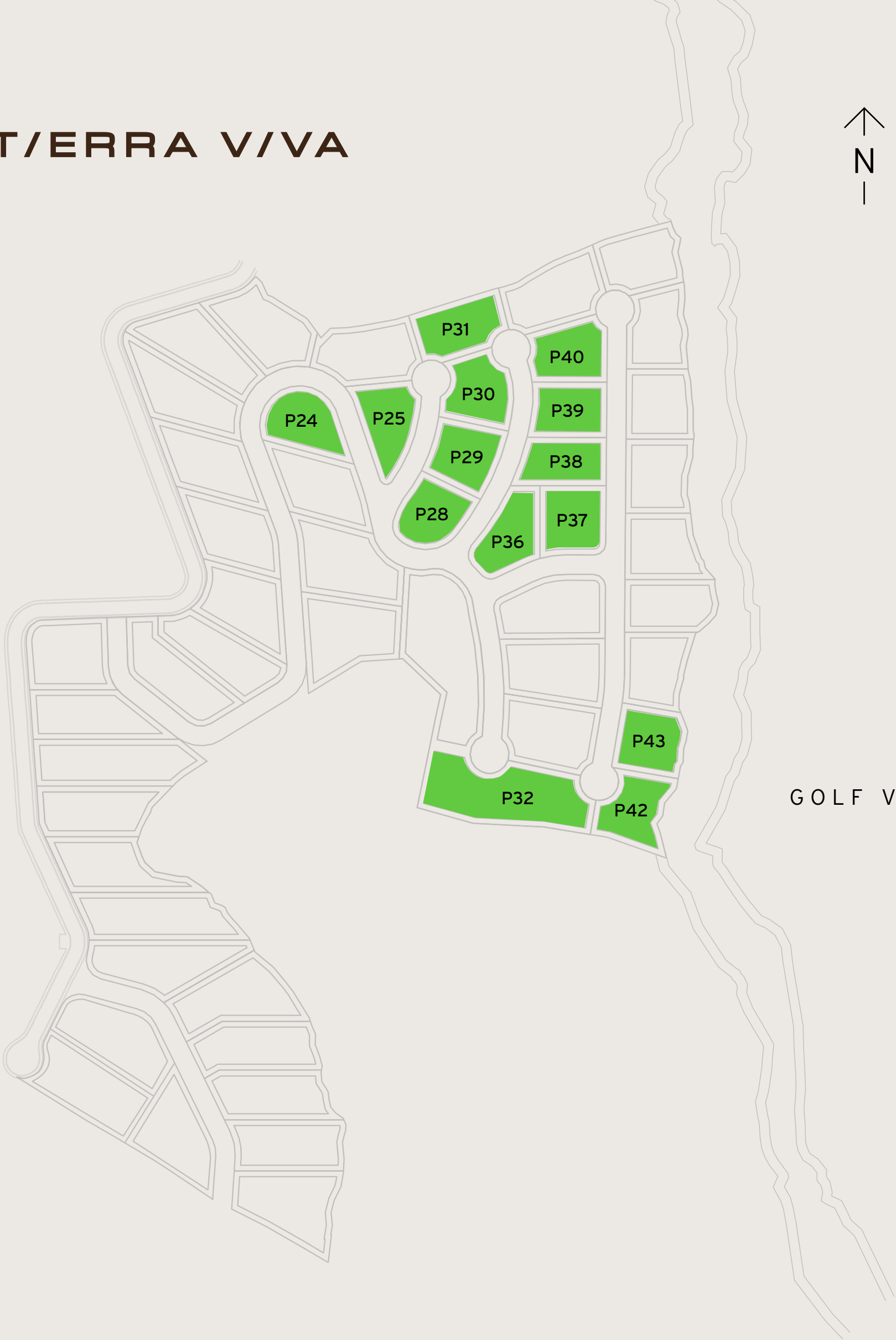
Including total indoor & outdoor built up area.



ROOFTOP
TERRACE

Disclaimer: All pictures, plans, layouts, information, data and details included in this brochure are indicative only and may change at any time up to the final 'as built' status in accordance with final designs of the project, regulatory approvals and planning permissions. All accessories and interior finishes such as wallpaper, chandeliers, furniture, electronics, white goods, curtains, hard and soft landscaping, pavements, features, gym, and other elements displayed in the brochure, or between the plot boundary, are not part of the unit and are shown for illustrative purposes only.





SEA VIEWS

GOLF VIEWS

ESMERALDA VILLAS

4 - B E D	SQM	680 - 822	Disclaimer: All pictures, plans, layouts, information, data and details included in this brochure are indicative only and may change at any time up to the final 'as built' status in accordance with final designs of the project, regulatory approvals and planning permissions. All accessories and interior finishes such as wallpaper, chandeliers, furniture, electronics, white goods, curtains, hard and soft landscaping, pavements, features, gym, and other elements displayed in the brochure, or between the plot boundary, are not part of the unit and are shown for illustrative purposes only.
	SQFT	7,320 - 8,848	
PLOT SIZE		SQM 1,005 - 1,669	SQFT 10,818 - 17,965

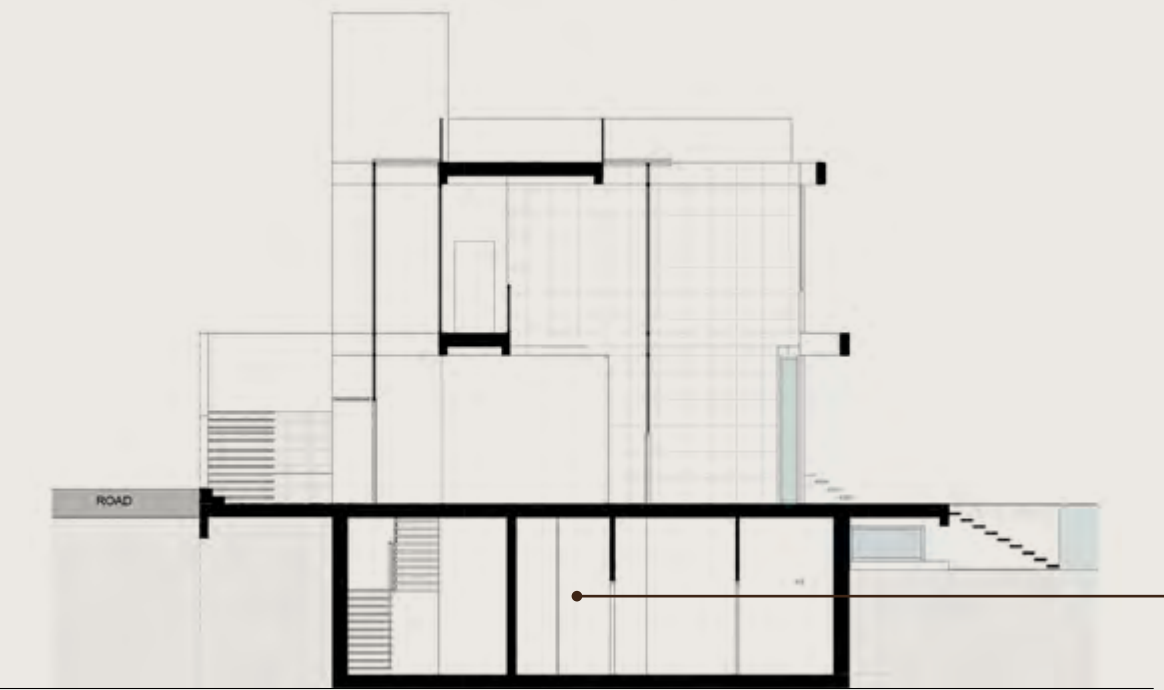
Including total indoor & outdoor built up area.



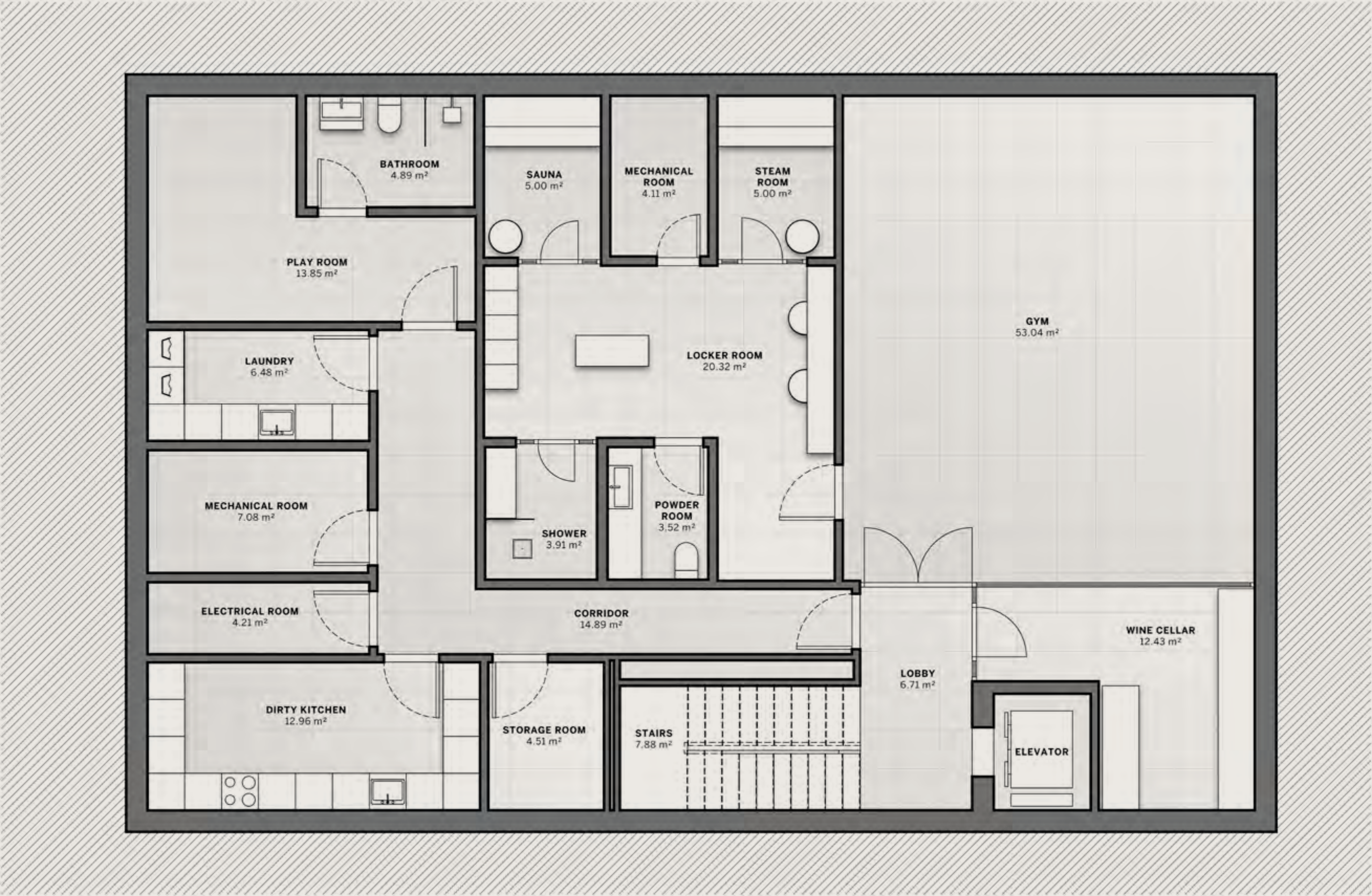
ESMERALDA
VILLAS

4 - B E D	S Q M 6 8 0 - 8 2 2
	S Q F T 7 , 3 2 0 - 8 , 8 4 8
P L O T S I Z E	
S Q M	1 , 0 0 5 - 1 , 6 6 9
S Q F T	1 0 , 8 1 8 - 1 7 , 9 6 5

Including total indoor & outdoor built up area.



BASEMENT

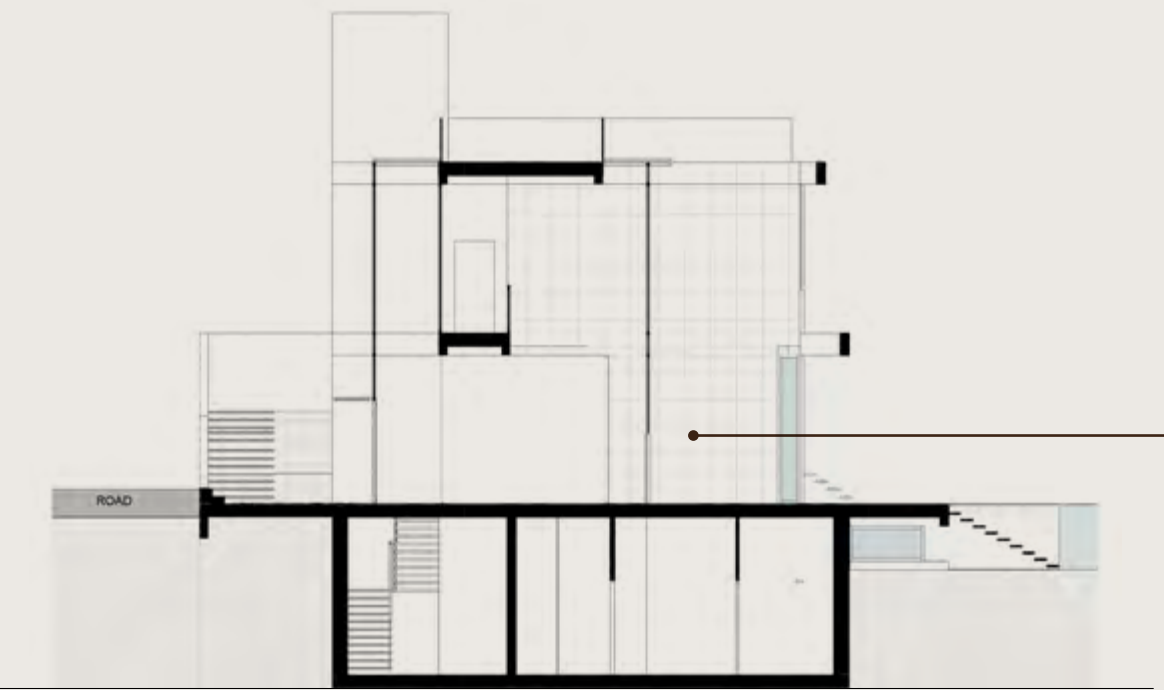


Disclaimer: All pictures, plans, layouts, information, data and details included in this brochure are indicative only and may change at any time up to the final 'as built' status in accordance with final designs of the project, regulatory approvals and planning permissions. All accessories and interior finishes such as wallpaper, chandeliers, furniture, electronics, white goods, curtains, hard and soft landscaping, pavements, features, gym, and other elements displayed in the brochure, or between the plot boundary, are not part of the unit and are shown for illustrative purposes only.

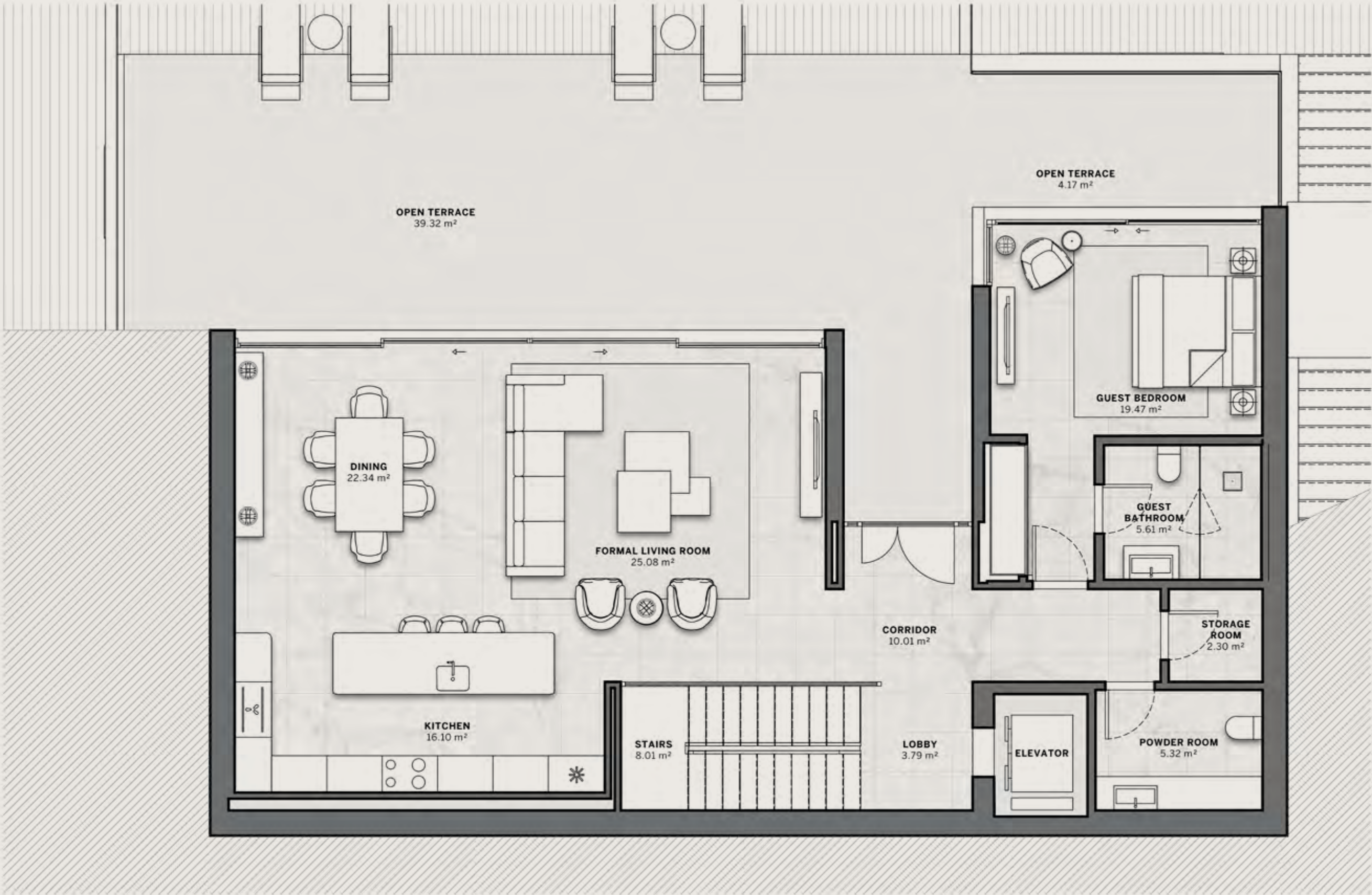
ESMERALDA
VILLAS

4 - B E D	S Q M 6 8 0 - 8 2 2
	S Q F T 7 , 3 2 0 - 8 , 8 4 8
P L O T S I Z E	
S Q M	1 , 0 0 5 - 1 , 6 6 9
S Q F T	1 0 , 8 1 8 - 1 7 , 9 6 5

Including total indoor & outdoor built up area.



GROUND
FLOOR

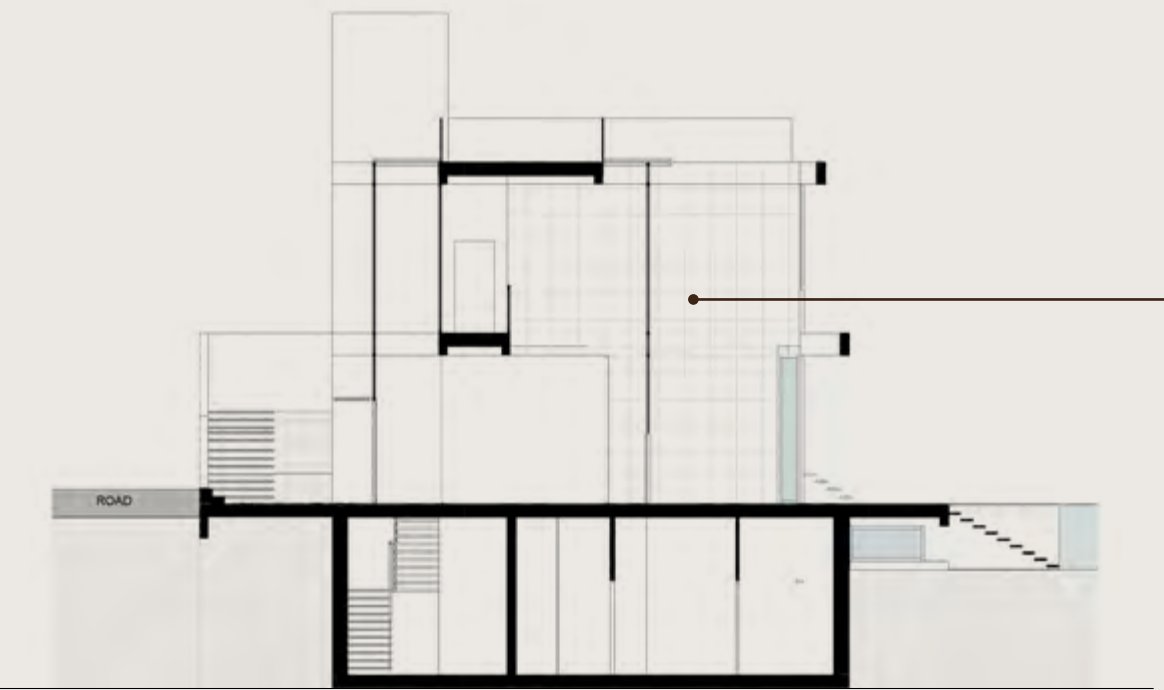


Disclaimer: All pictures, plans, layouts, information, data and details included in this brochure are indicative only and may change at any time up to the final 'as built' status in accordance with final designs of the project, regulatory approvals and planning permissions. All accessories and interior finishes such as wallpaper, chandeliers, furniture, electronics, white goods, curtains, hard and soft landscaping, pavements, features, gym, and other elements displayed in the brochure, or between the plot boundary, are not part of the unit and are shown for illustrative purposes only.

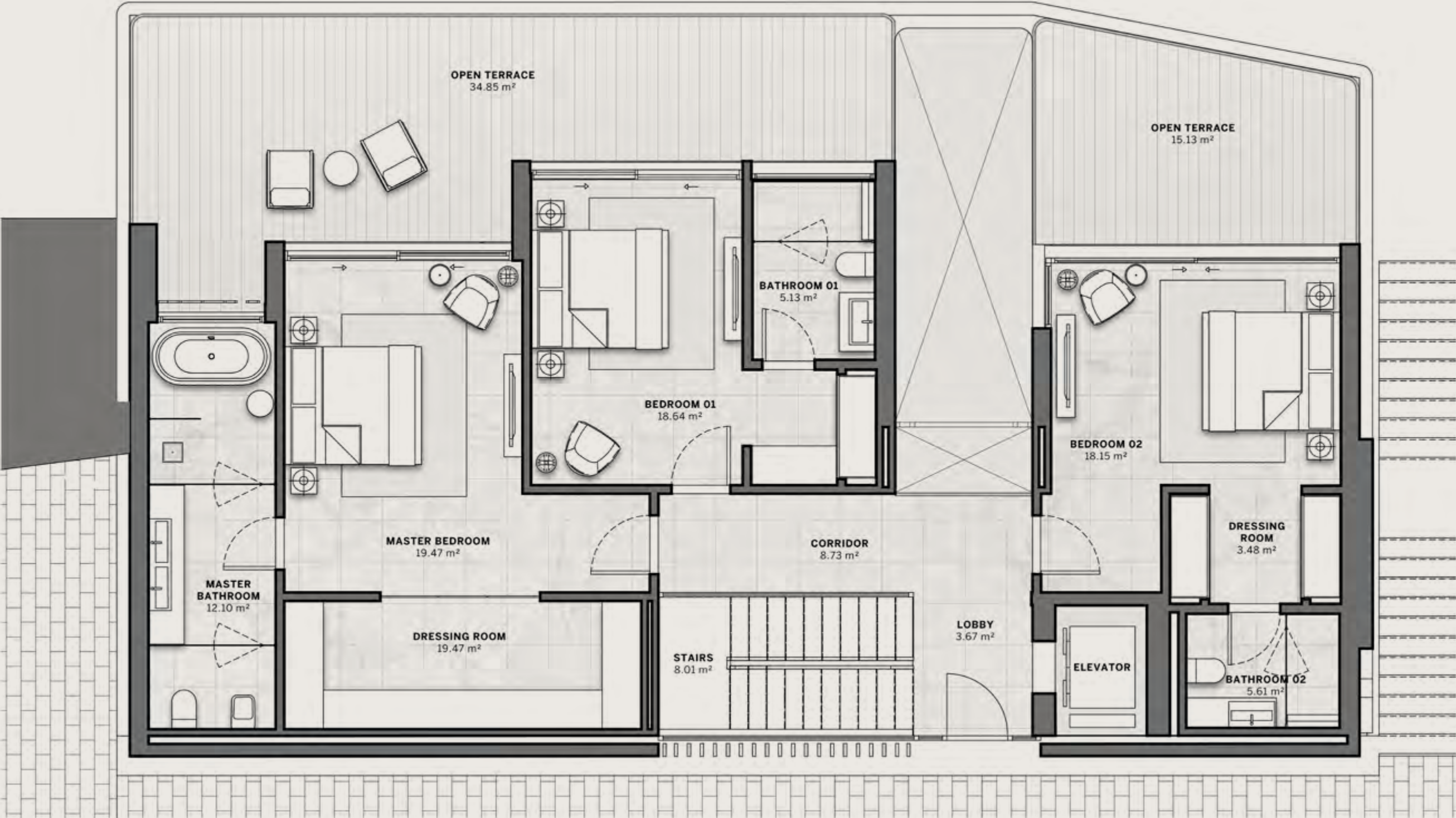
ESMERALDA
VILLAS

4 - B E D	S Q M 6 8 0 - 8 2 2
	S Q F T 7 , 3 2 0 - 8 , 8 4 8
P L O T S I Z E	
S Q M	1 , 0 0 5 - 1 , 6 6 9
S Q F T	1 0 , 8 1 8 - 1 7 , 9 6 5

Including total indoor & outdoor built up area.



FIRST
FLOOR



Disclaimer: All pictures, plans, layouts, information, data and details included in this brochure are indicative only and may change at any time up to the final 'as built' status in accordance with final designs of the project, regulatory approvals and planning permissions. All accessories and interior finishes such as wallpaper, chandeliers, furniture, electronics, white goods, curtains, hard and soft landscaping, pavements, features, gym, and other elements displayed in the brochure, or between the plot boundary, are not part of the unit and are shown for illustrative purposes only.

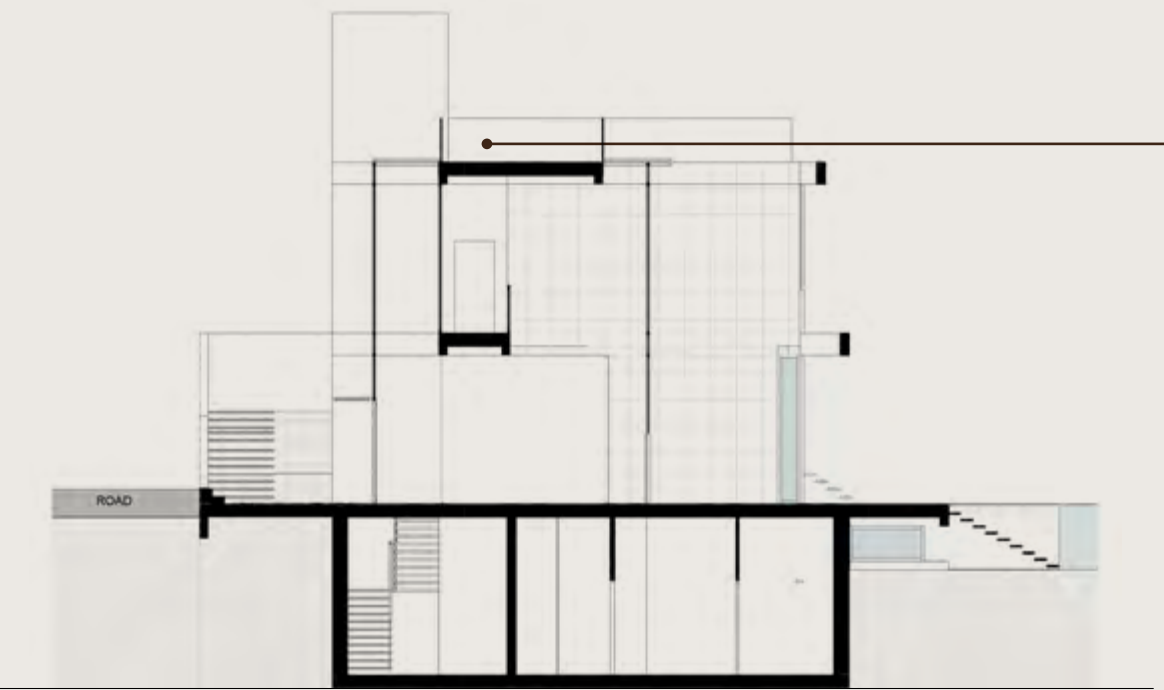
T/ERRA V/VA



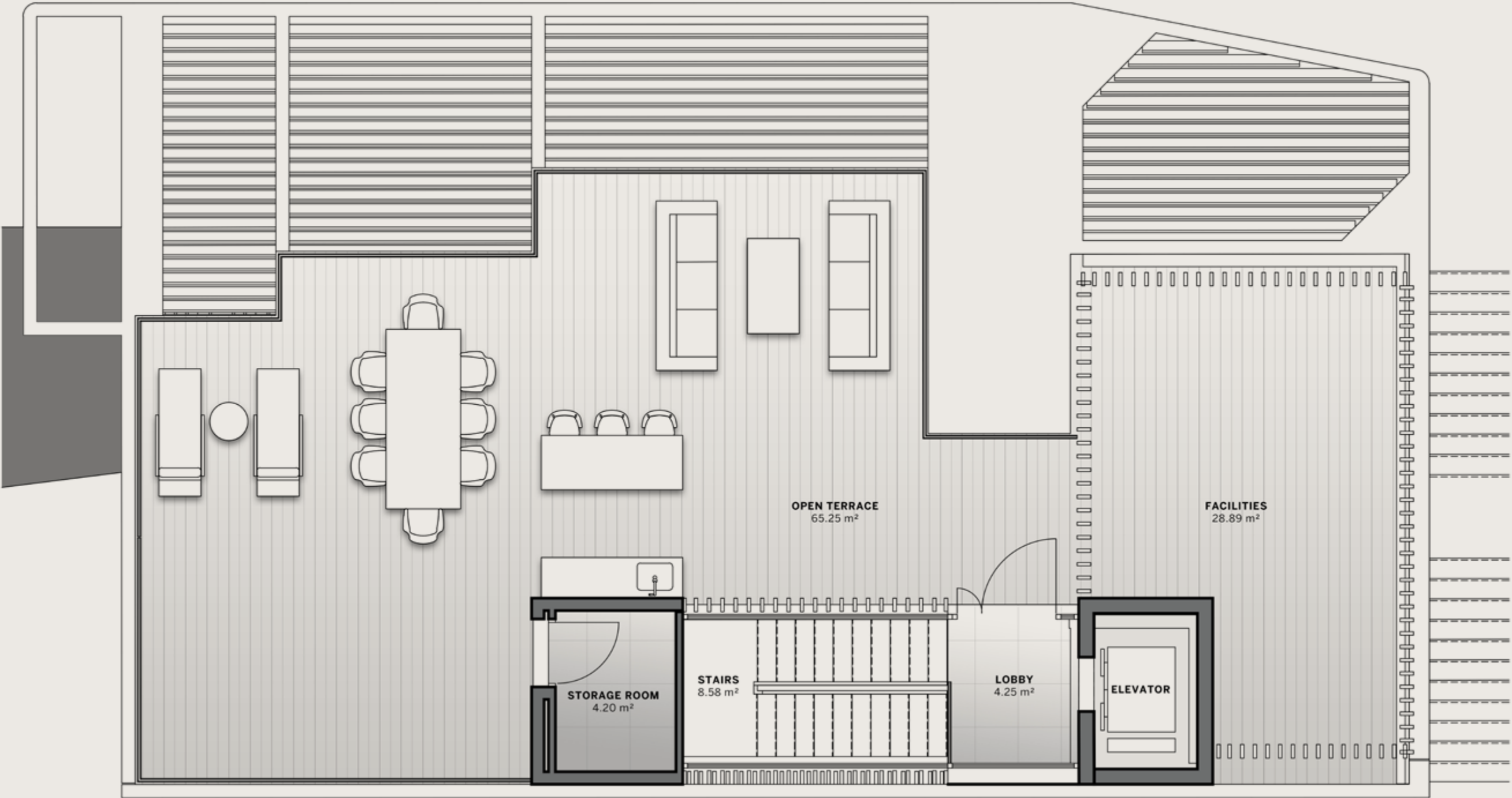
ESMERALDA
VILLAS

4 - B E D	S Q M 6 8 0 - 8 2 2
	S Q F T 7 , 3 2 0 - 8 , 8 4 8
P L O T S I Z E	
S Q M	1 , 0 0 5 - 1 , 6 6 9
S Q F T	1 0 , 8 1 8 - 1 7 , 9 6 5

Including total indoor & outdoor built up area.



ROOFTOP
TERRACE



Disclaimer: All pictures, plans, layouts, information, data and details included in this brochure are indicative only and may change at any time up to the final 'as built' status in accordance with final designs of the project, regulatory approvals and planning permissions. All accessories and interior finishes such as wallpaper, chandeliers, furniture, electronics, white goods, curtains, hard and soft landscaping, pavements, features, gym, and other elements displayed in the brochure, or between the plot boundary, are not part of the unit and are shown for illustrative purposes only.

Automobili Lamborghini S.p.A.

Founded in 1963, Automobili Lamborghini is headquartered in Sant'Agata Bolognese, in the province of Bologna, and produces some of the most desirable super sports cars in the world. Still rooted in its historic headquarters in the heart of Motorvalley, Lamborghini is synonymous with the highest technological expertise in the design and production of engines with extraordinary performance. The design of each model has always been unique: the language of forms is visionary and ahead of its time.

Brave, unexpected and authentic: the three values of the Sant'Agata Bolognese brand are reflected in the three models in the range, the V8 engine with Super SUV Urus, the perfect combination of power, performance, comfort and driving versatility and two super sports cars with naturally aspirated V10 and V12 engines, the Huracán and the Aventador successor, the newborn Revuelto, the starting point to the "Direzione Cor Tauri", the hybridization and electrification of the whole Lamborghini range.

Automobili Lamborghini is today a global company with a balanced presence in the three macro-regions America, Europe/ Middle-East/Africa and Asia Pacific. Based on record commercial and financial results and in constant growth and with the support and passion of over 2,000 employees, Lamborghini is now aiming for an increasingly sustainable future, up to the introduction of a fourth model full electric, while still fully respecting the values and DNA of the brand.





DarGlobal PLC is an international real estate developer specializing in exclusive luxury developments across the world's most coveted cosmopolitan cities.

Catering to global citizens seeking prime investments, second homes, and luxury living, DarGlobal transforms real estate into economic catalysts, unlocking opportunities for both investors and the countries it enters.

DarGlobal has partnered with over 10 world-renowned luxury brands, including Trump Organization, Aston Martin, Automobili Lamborghini, ELIE SAAB, Marriott Residences, Missoni, Mouawad, Pagani Automobili, W Hotels, and Versace. These collaborations offer unique investment opportunities in global cities, providing both wealth growth and protection.

Listed on the London Stock Exchange, DarGlobal goes beyond property development, it drives economic transformation by attracting international clients and Foreign Direct Investment (FDI). By injecting capital, confidence, and industry expertise, DarGlobal enhances local infrastructure while elevating the global appeal of each destination.

With a presence in 14 international cities across 9 countries, DarGlobal's portfolio spans the United Kingdom, Spain, Greece, Saudi Arabia, the UAE, Oman, and Qatar. The company is also expanding into world-class hospitality, developing luxury hotels in Dubai, the Maldives, and Oman.

To support its international clientele, DarGlobal has sales and customer service offices in New York, London, Marbella, Athens, Dubai, Jeddah, Riyadh, Muscat, and Doha.



**LONDON
STOCK
EXCHANGE**



OUR OFFICES

MARBELLA

SPAIN

-

Marbella Club Golden Mile,
Av. Bulevar Principe Alfonso de
Hohenlohe, Marbella 29602
Málaga, Spain
+34 951 121 221

DUBAI

UAE

-

Jumeirah Emirates Towers
30th Floor, Sheikh Zayed Road,
PO Box 2523, Dubai, UAE
+971 4 562 9616

LONDON

UK

-

50 Hans Crescent,
Knightsbridge, London,
SW1X 0NA, UK
+44 20 8135 4699

NEW YORK CITY

USA

-

19th floor - Trump Tower
New York, 725 5th Ave,
NY 10022, USA
+1 212 715 1067

MUSCAT

OMAN

-

Royal Opera House Muscat
Shatti Al Qurum,
Muscat, Oman
+968 2270 2771

DOHA

QATAR

-

Malibu Building,
Lusail Entertainment City,
Doha, Qatar
+974 4410 8282

RIYADH

KSA

-

2135 Tahlia St.,
Al Olaya, 12222
Riyadh, KSA
+966 800 118 8081

JEDDAH

KSA

-

Ash Shati, 23613,
King Abdulaziz Road,
Jeddah, KSA
+966 800 118 8081

-

For more information on
TIERRA VIVA
please call +34 951 121 221

-

You can visit our
website at **darglobal.co.uk**
or via our [social media](#)
platforms

T/ERRA V/VA



DARGLOBAL.CO.UK

Dar Al Arkan Spain S.L. shall at all times comply with the requirements established in Law 38/1999, of 5 November, on Building Regulation in relation to the receipt of sums on account prior to the commencement of the works or during the construction period, depositing such sums in a special account set up for this purpose and insuring such sums by means of a joint and several guarantee or surety insurance.