

V1VIO

TOWER

Obj.1

Dubai Is a Gallery,
and Buildings Are Showpieces

V1VID

TOWER



District 1, Jumeirah Village Triangle

Building Description:

B+G+4P+16

Retail 1-4

Anticipated Handover: Q3 2026

Anticipated Service Charge: AED 15/Sq.Ft.

Welcome to V1VID Tower, where each space manifests a delightful ambiance, drawing you into a realm of timeless elegance and contemporary allure. The tower's sleek, modern facade, with its futuristic design, sets a new standard in modern sophistication.

Floor Plans

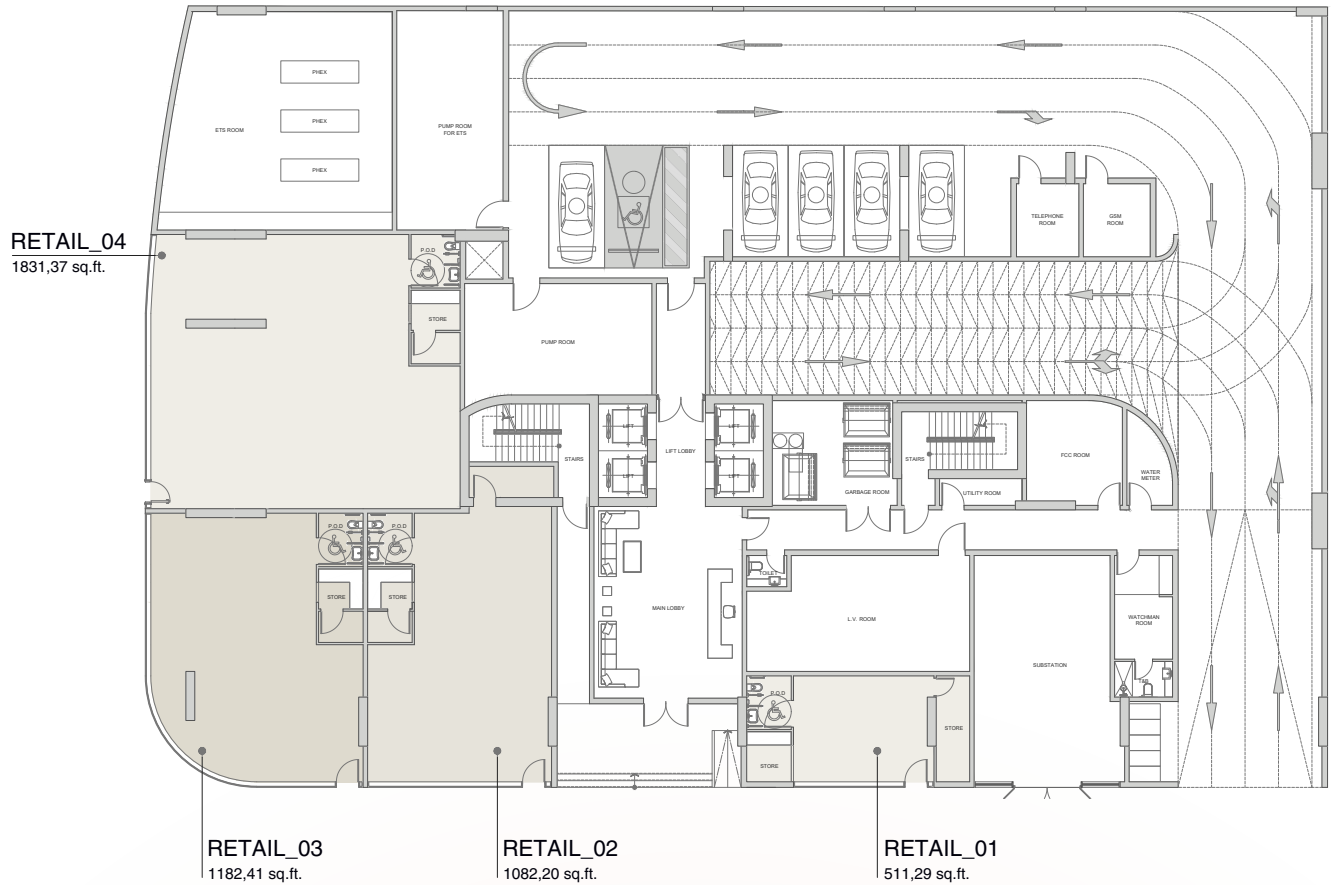


GROUND FLOOR PLAN

FLOOR: G

VIVID

TOWER



Disclaimer: all pictures, plans, layouts, information, data and details included in this brochure are indicative only may change at any time up to the final "as built" status in accordance with the final designs of the project, regulatory approvals and planning permissions

TYPICAL FLOOR PLAN

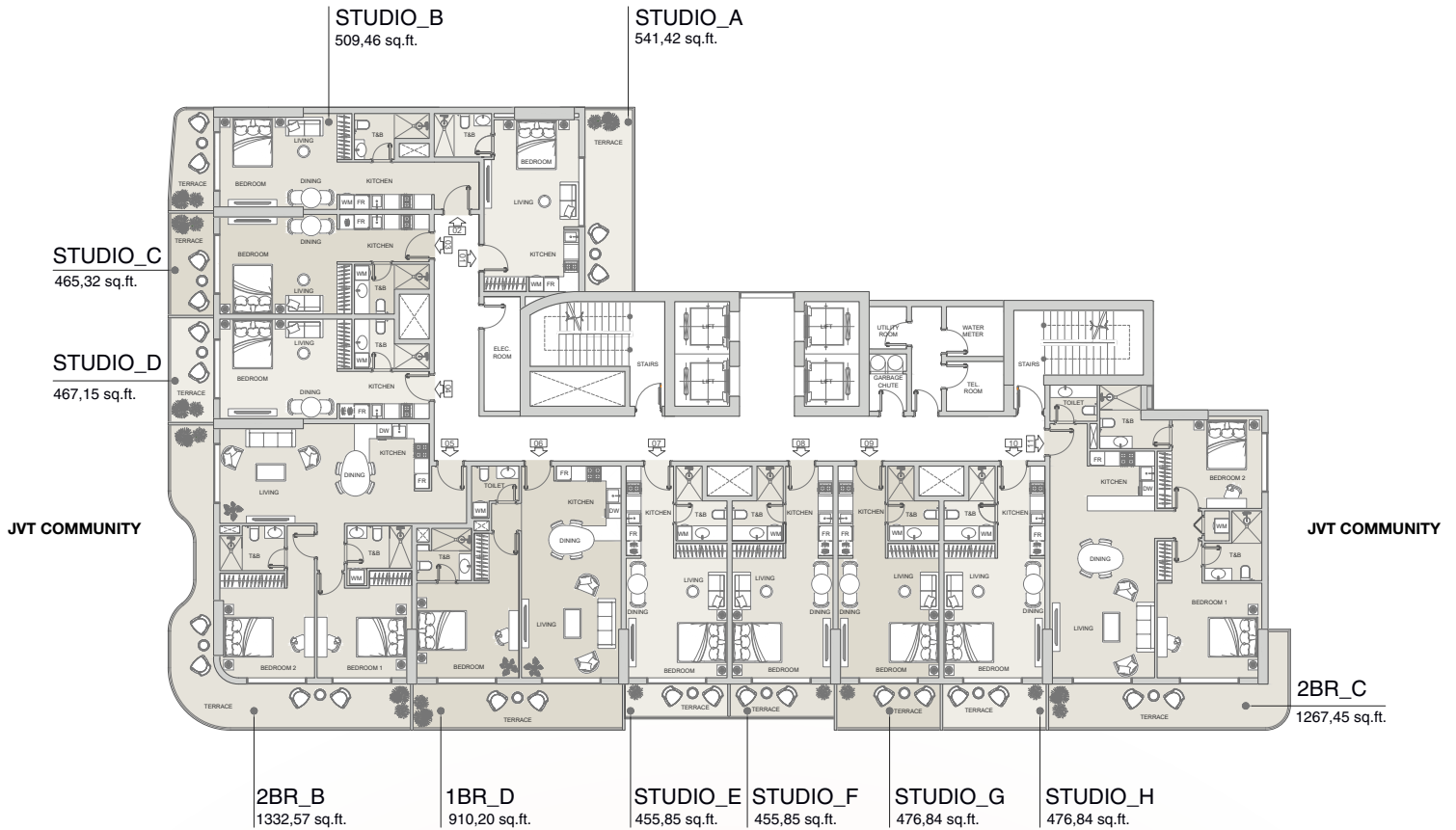
FLOOR: 1



TYPICAL FLOOR PLAN

FLOOR: 2 - 5

VIVID
TOWER



DUBAI MARINA, JUMEIRAH ISLANDS

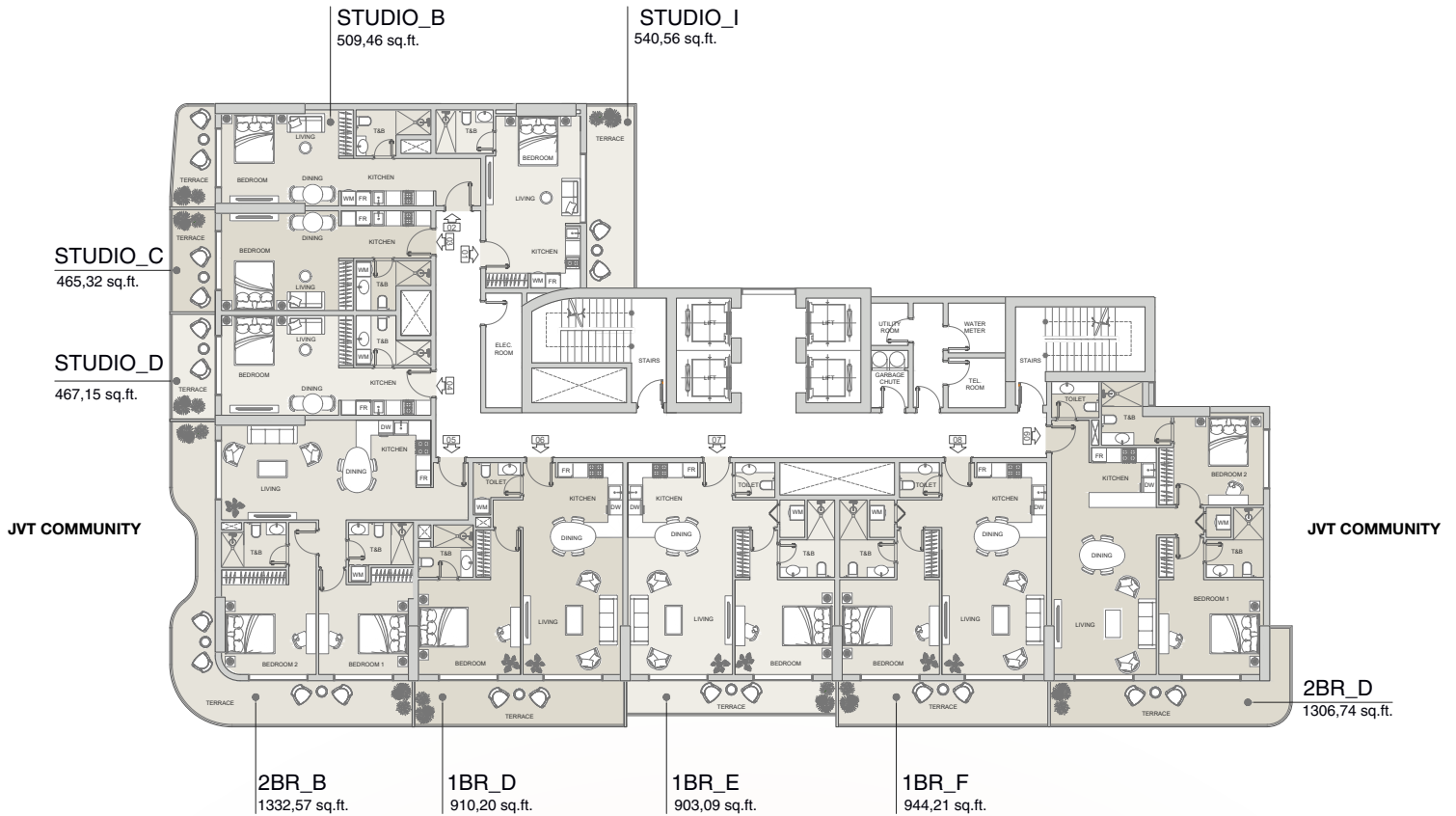


Disclaimer: all pictures, plans, layouts, information, data and details included in this brochure are indicative only may change at any time up to the final "as built" status in accordance with the final designs of the project, regulatory approvals and planning permissions

TYPICAL FLOOR PLAN

FLOOR: 6 - 13

VIVID
TOWER



DUBAI MARINA, JUMEIRAH ISLANDS



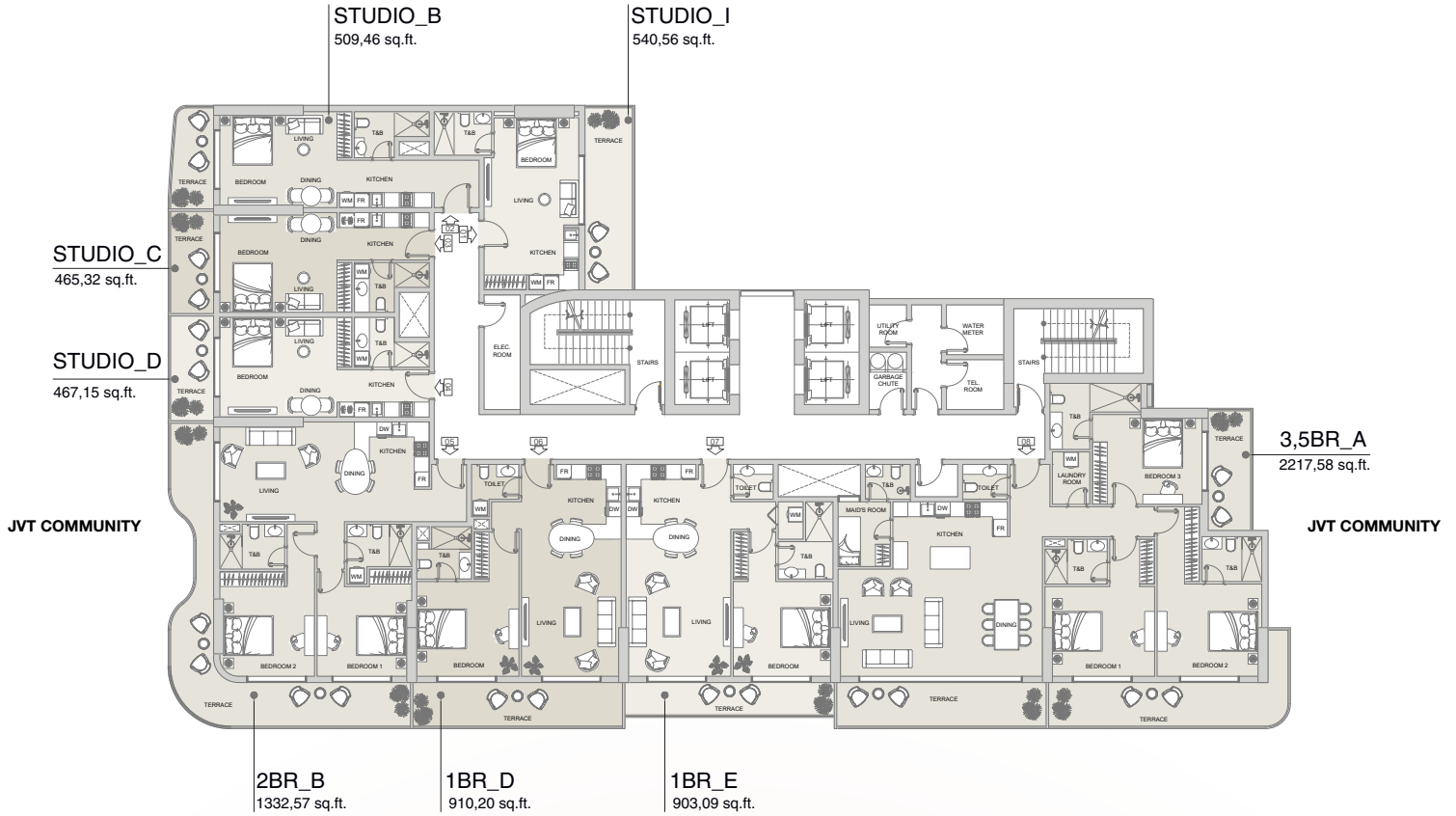
Disclaimer: all pictures, plans, layouts, information, data and details included in this brochure are indicative only may change at any time up to the final "as built" status in accordance with the final designs of the project, regulatory approvals and planning permissions

TYPICAL FLOOR PLAN

FLOOR: 14 - 15

VIVID

TOWER



DUBAI MARINA, JUMEIRAH ISLANDS



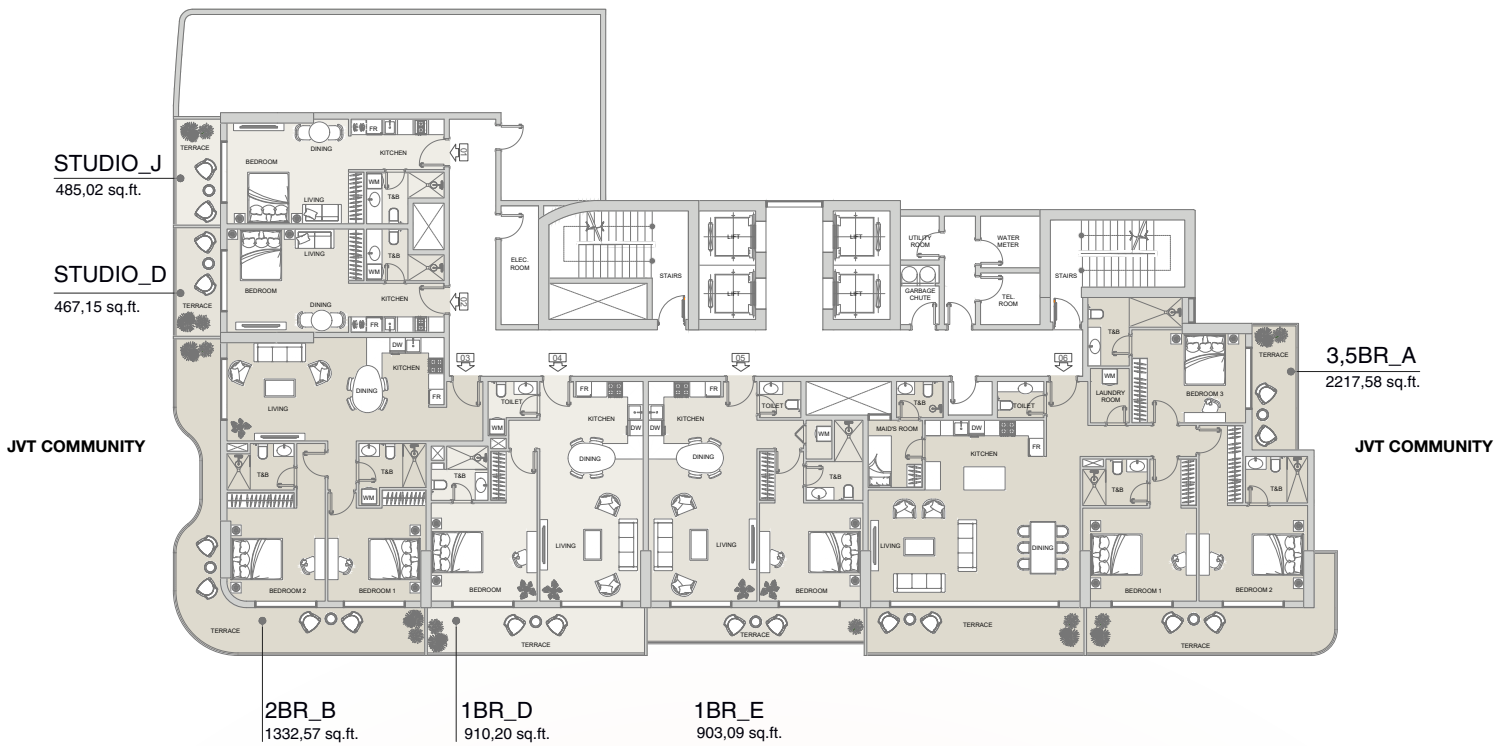
Disclaimer: all pictures, plans, layouts, information, data and details included in this brochure are indicative only may change at any time up to the final "as built" status in accordance with the final designs of the project, regulatory approvals and planning permissions

TYPICAL FLOOR PLAN

FLOOR: 16

V1V10

TOWER



DUBAI MARINA, JUMEIRAH ISLANDS



Disclaimer: all pictures, plans, layouts, information, data and details included in this brochure are indicative only may change at any time up to the final "as built" status in accordance with the final designs of the project, regulatory approvals and planning permissions

Obj.1