

EXPO LIVING

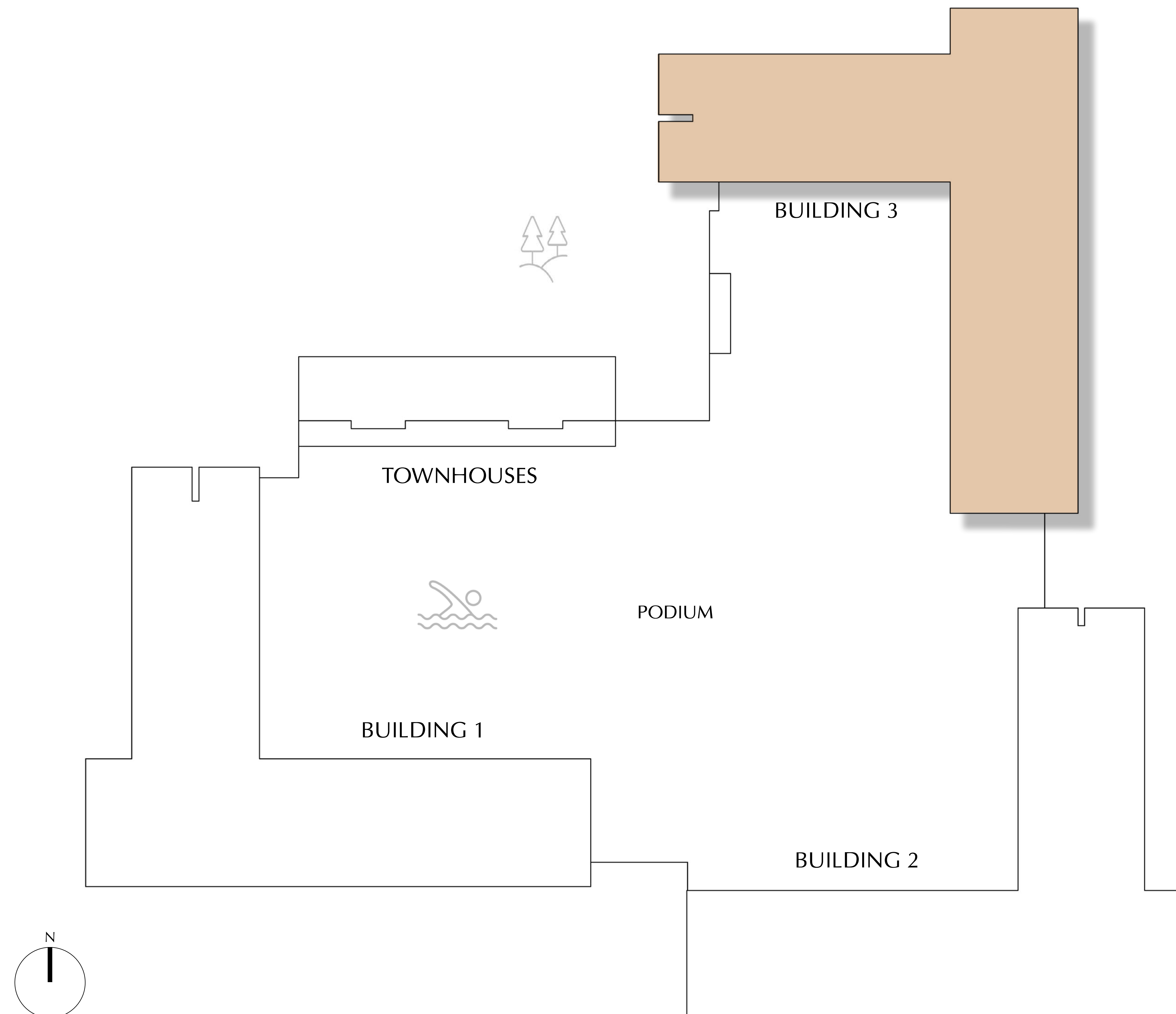
FLOOR PLANS - BUILDING 3

EMAAR



Terra Woods

EXPO LIVING



Terra Woods

EXPO LIVING

BUILDING 3 - APARTMENTS

FLOOR PLANS

EMAAR

Terra Woods

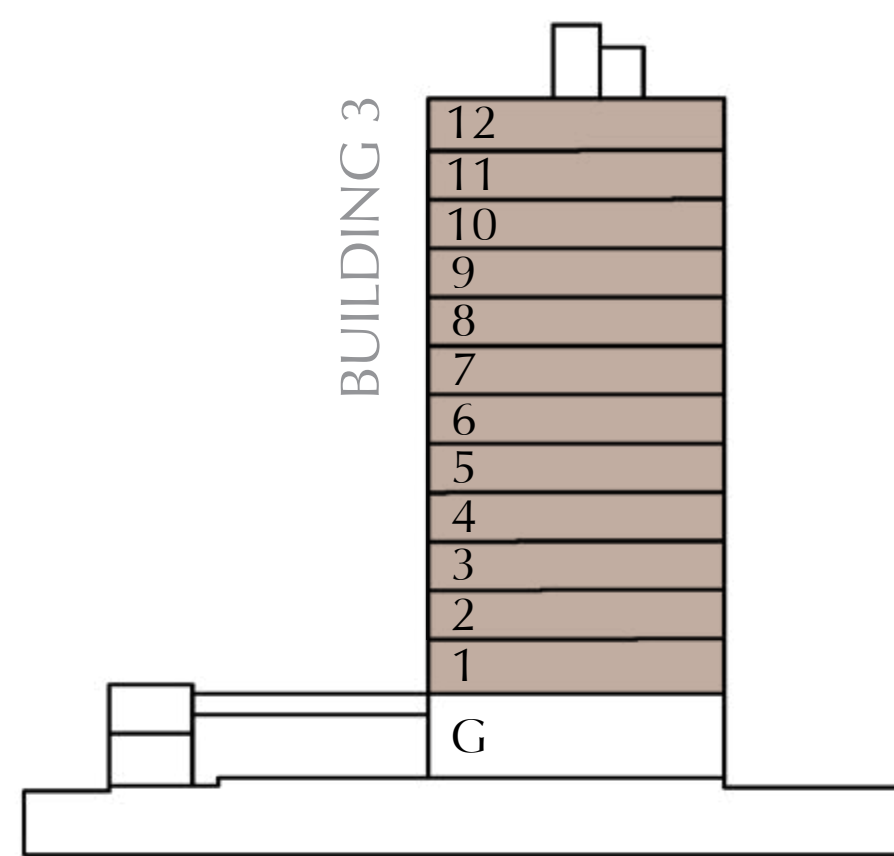
EXPO LIVING

PLOT4-BUILDING 3
1 BEDROOM TYPE-1A

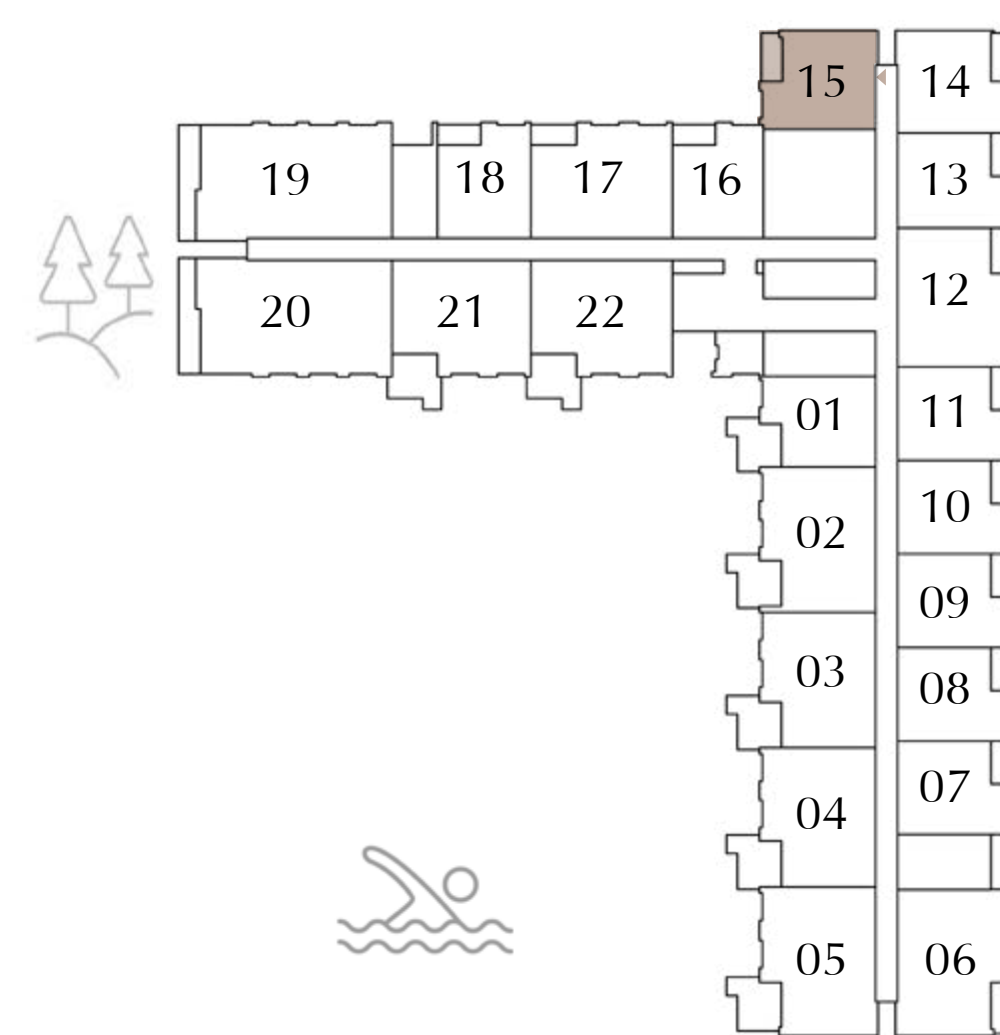
LEVEL 01-12 : UNIT - 15

SUITE AREA	685.77 SQ.FT.	63.71 SQ.M.
BALCONY AREA	79.76 SQ.FT.	7.41 SQ.M.
<hr/>		
TOTAL AREA	765.53 SQ.FT.	71.12 SQ.M.

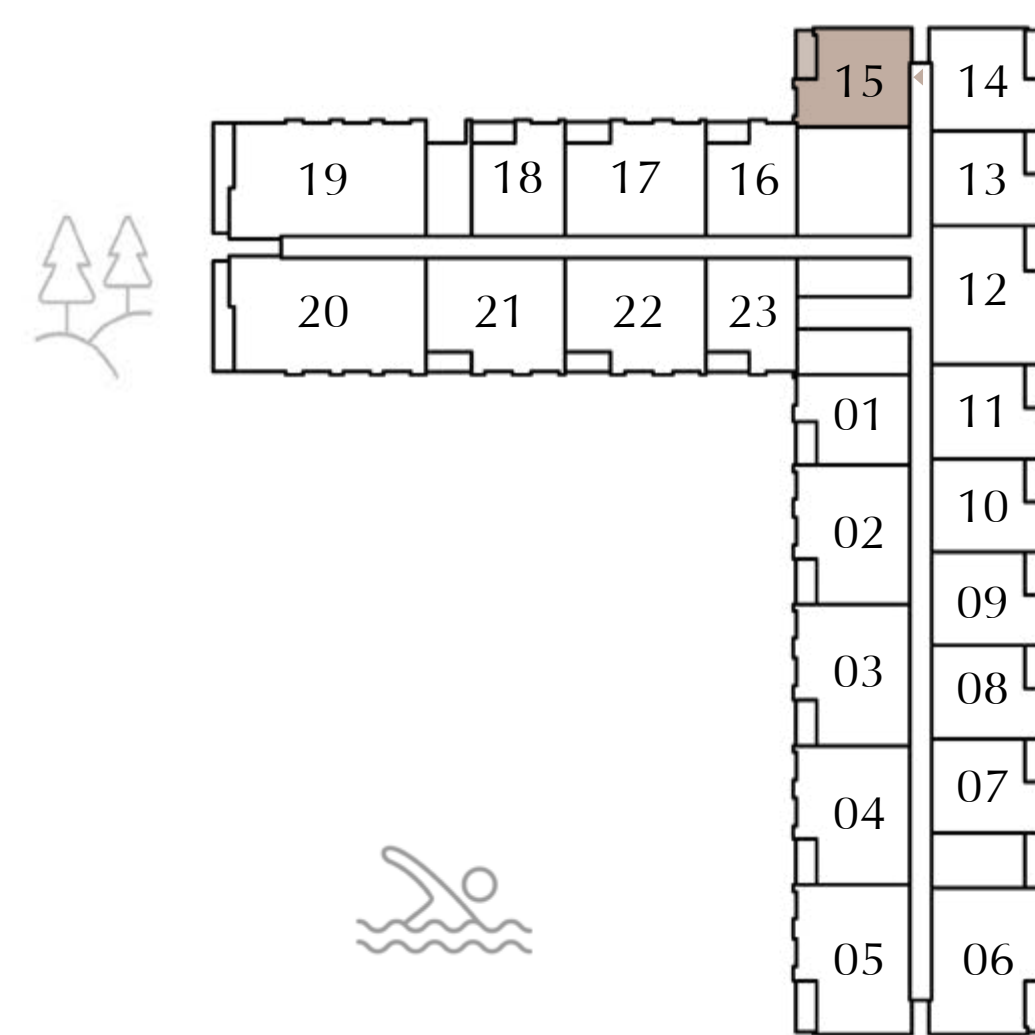
KEY SECTION



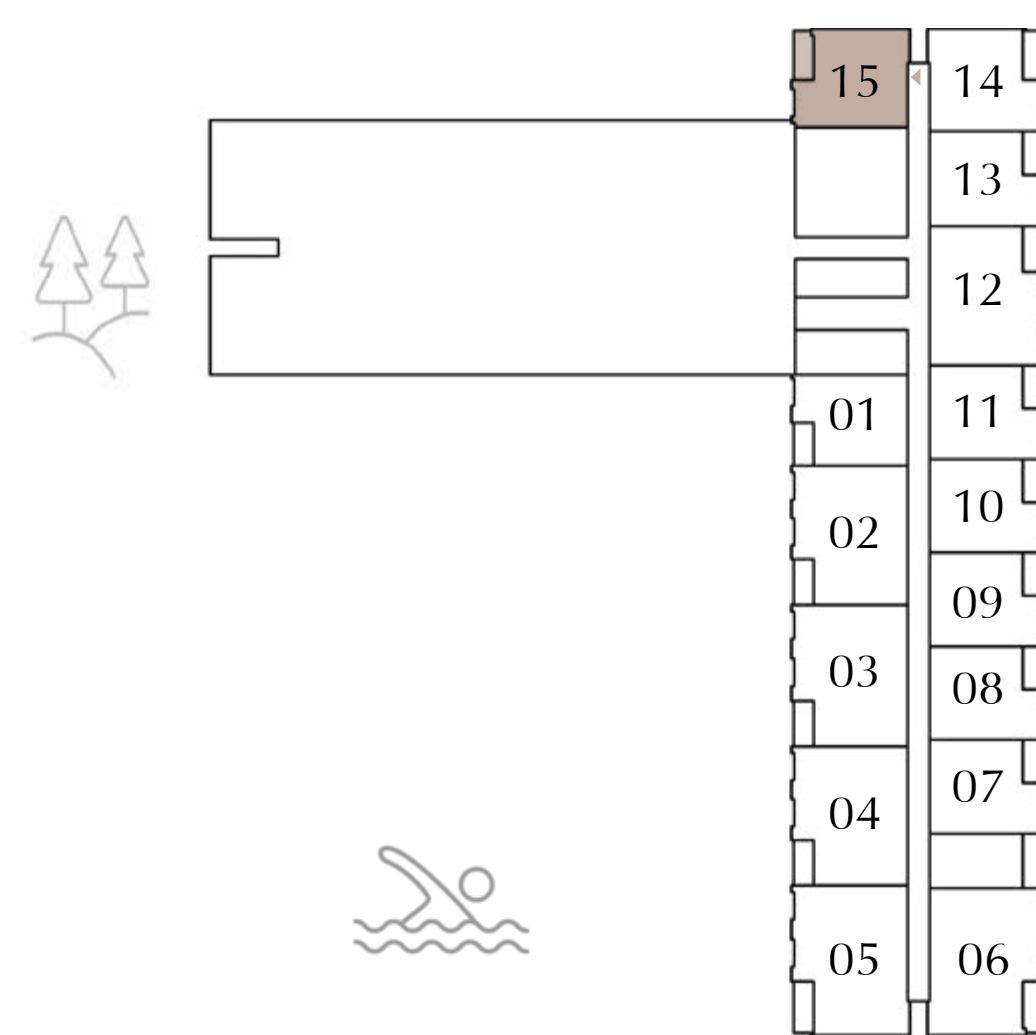
KEY PLAN



1ST FLOOR LEVEL



2ND-11TH FLOOR LEVEL



12TH FLOOR LEVEL



FLOOR PLAN 1. All dimensions are in imperial and metric, and measured from finish to finish excluding construction tolerances. 2. All materials, dimensions, and drawings are approximate only. 3. Information is subject to change without notice, at developer's absolute discretion. 4. Actual area may vary from the stated area. 5. Drawings not to scale. 6. All images used are for illustrative purposes only and do not represent the actual size, features, specifications, fittings, and furnishings. 7. The developer reserves the right to make revisions / alterations, at it's absolute discretion, without any liability whatsoever.

Terra Woods

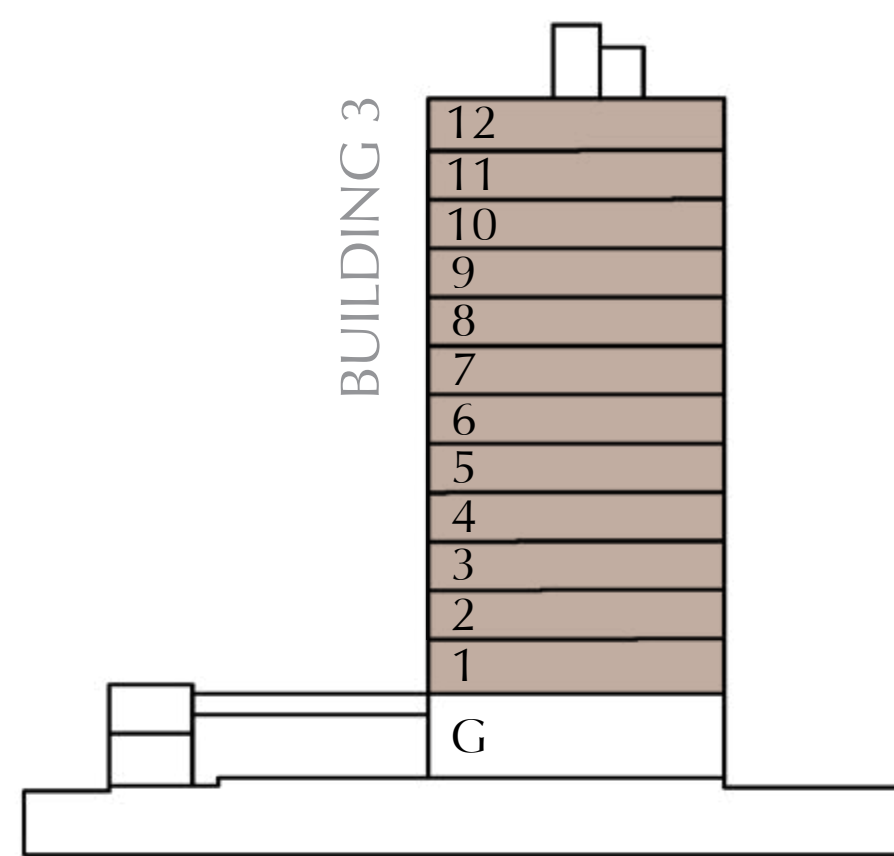
EXPO LIVING

PLOT4-BUILDING 3
1 BEDROOM TYPE-1B

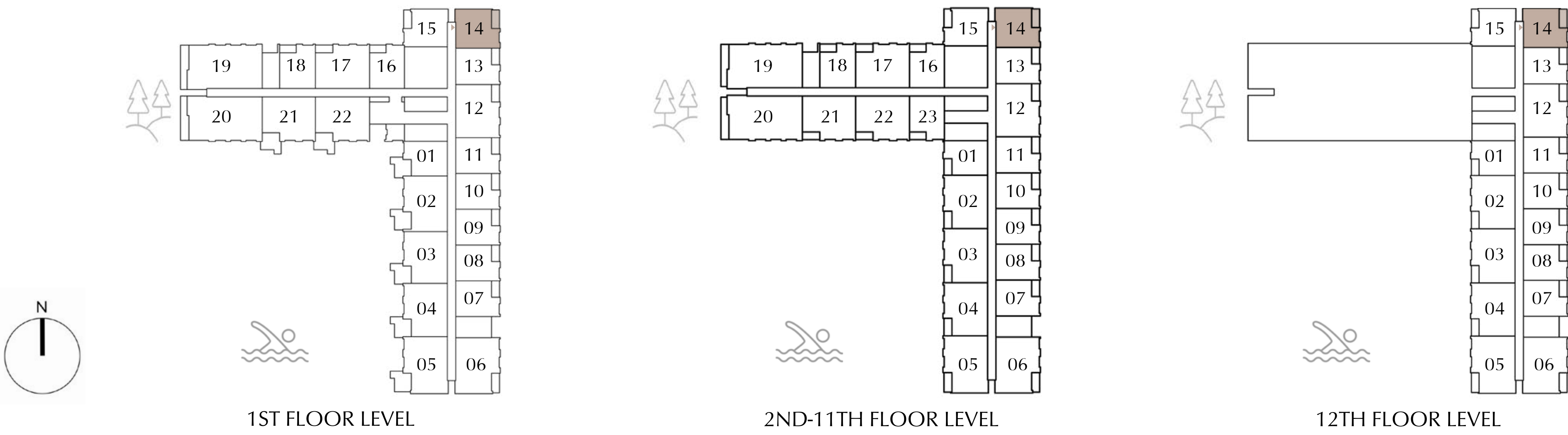
LEVEL 01-12 : UNIT - 14

SUITE AREA	673.07 SQ.FT.	62.53 SQ.M.
BALCONY AREA	79.76 SQ.FT.	7.41 SQ.M.
<hr/>		
TOTAL AREA	752.83 SQ.FT.	69.94 SQ.M.

KEY SECTION



KEY PLAN



FLOOR PLAN 1. All dimensions are in imperial and metric, and measured from finish to finish excluding construction tolerances. 2. All materials, dimensions, and drawings are approximate only. 3. Information is subject to change without notice, at developer's absolute discretion. 4. Actual area may vary from the stated area. 5. Drawings not to scale. 6. All images used are for illustrative purposes only and do not represent the actual size, features, specifications, fittings, and furnishings. 7. The developer reserves the right to make revisions / alterations, at it's absolute discretion, without any liability whatsoever.

Terra Woods

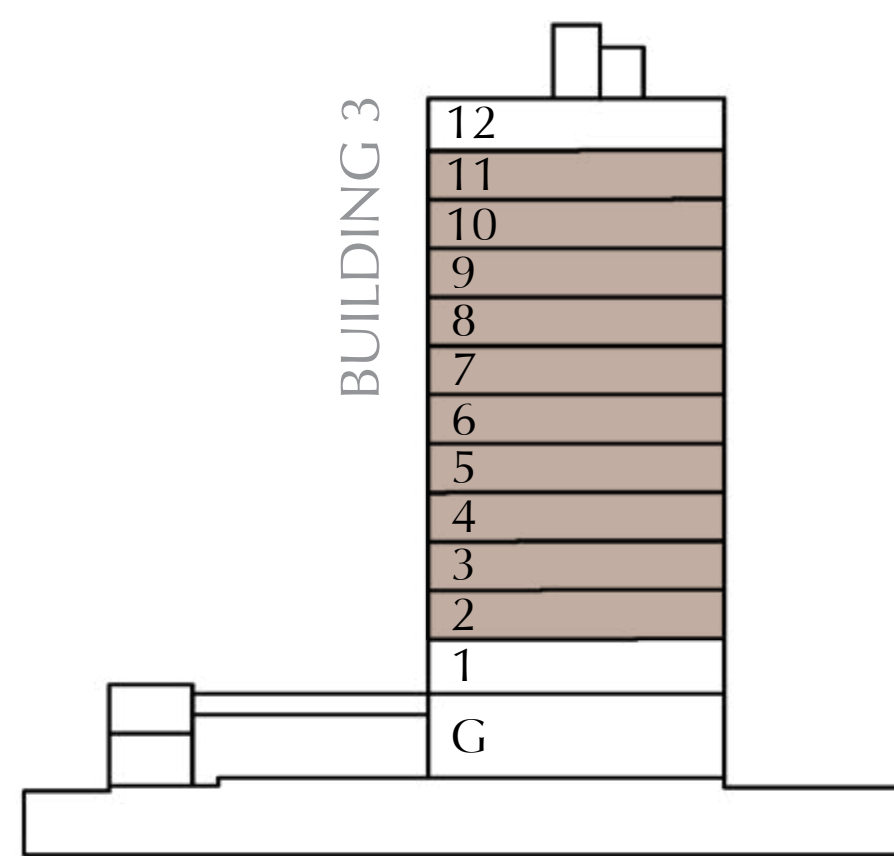
EXPO LIVING

PLOT4-BUILDING 3
1 BEDROOM TYPE-2A

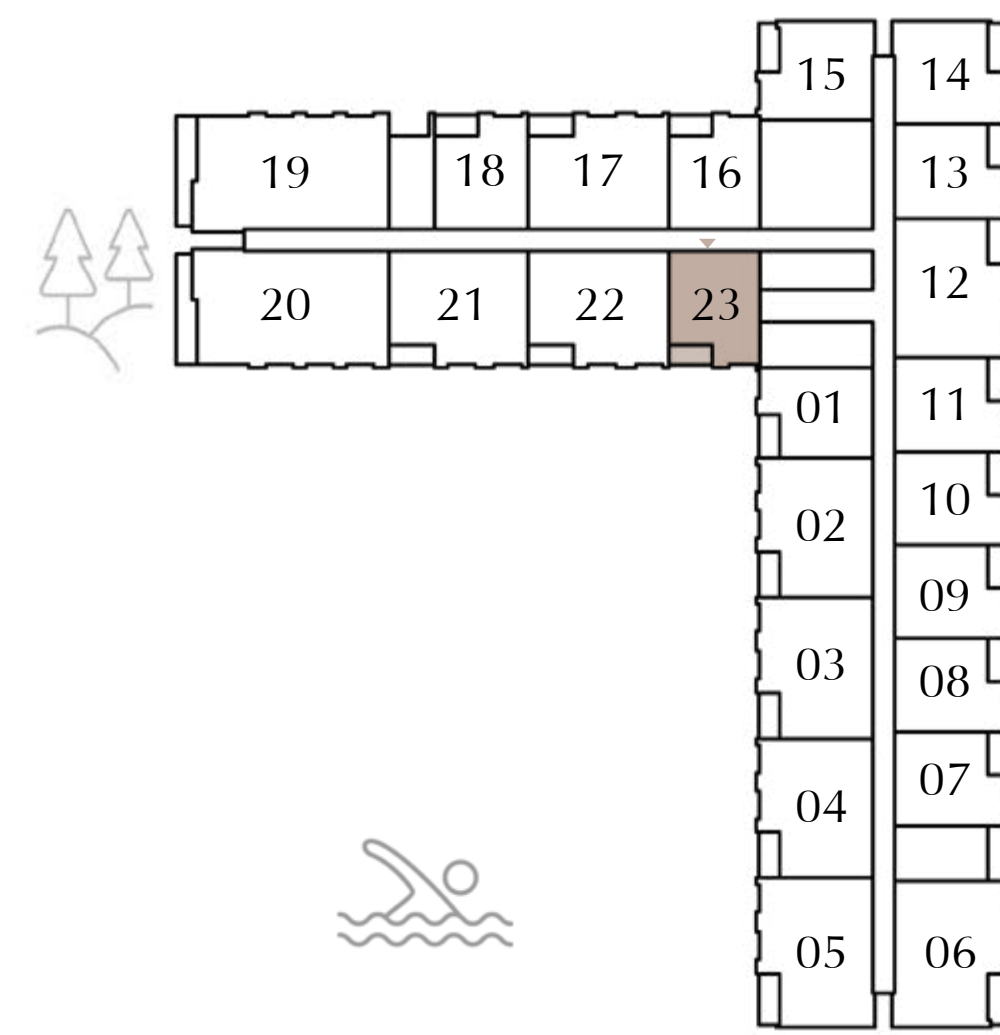
LEVEL 02-11 : UNIT - 23

SUITE AREA	682.43 SQ.FT.	63.40SQ.M.
BALCONY AREA	77.50 SQ.FT.	7.20SQ.M.
<hr/>		
TOTAL AREA	759.93 SQ.FT.	70.60SQ.M.

KEY SECTION



KEY PLAN



2ND-11TH FLOOR LEVEL



FLOOR PLAN 1. All dimensions are in imperial and metric, and measured from finish to finish excluding construction tolerances. 2. All materials, dimensions, and drawings are approximate only. 3. Information is subject to change without notice, at developer’s absolute discretion. 4. Actual area may vary from the stated area. 5. Drawings not to scale. 6. All images used are for illustrative purposes only and do not represent the actual size, features, specifications, fittings, and furnishings. 7. The developer reserves the right to make revisions / alterations, at it’s absolute discretion, without any liability whatsoever.

Terra Woods

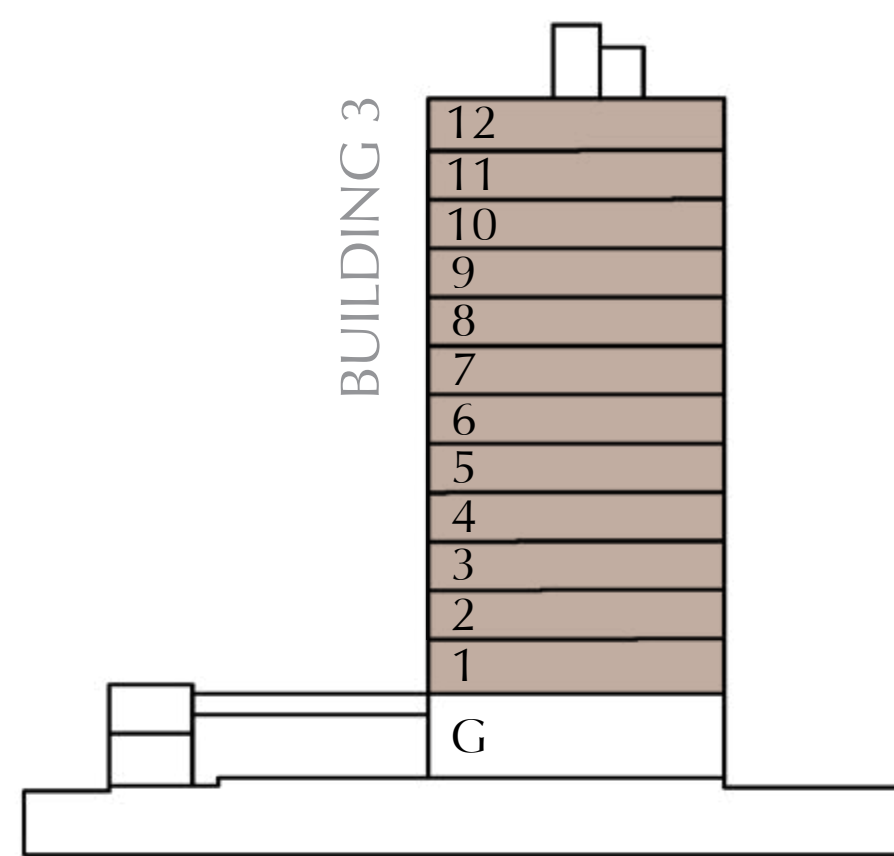
EXPO LIVING

PLOT4-BUILDING 3 1 BEDROOM TYPE-2B

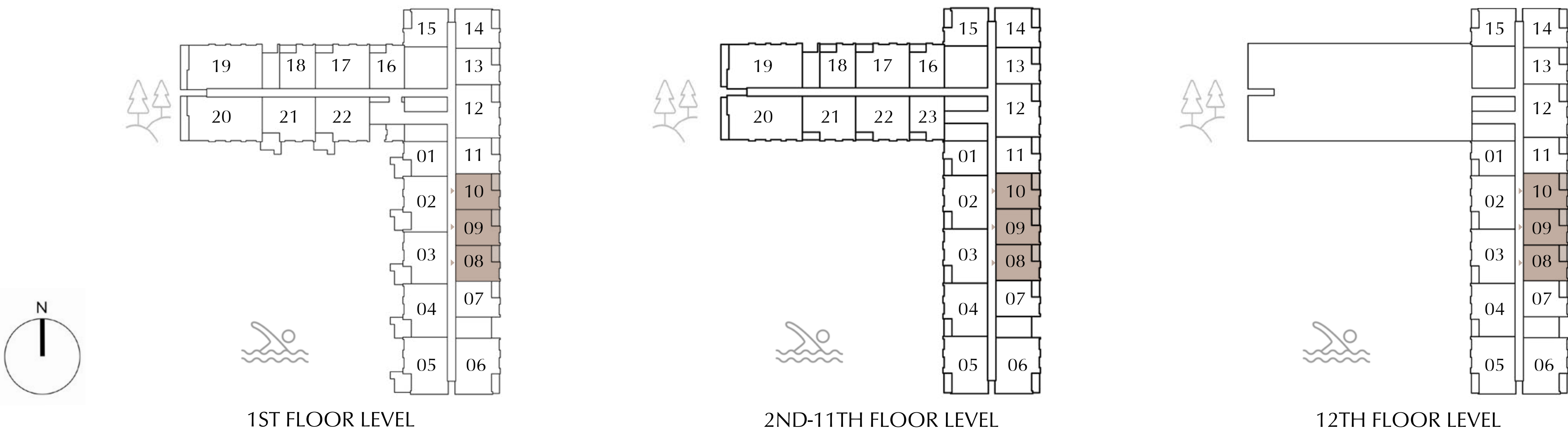
LEVEL 01-12 : UNIT - 08, 09 & 10

SUITE AREA	664.35 SQ.FT.	61.72 SQ.M.
BALCONY AREA	77.50 SQ.FT.	7.20 SQ.M.
<hr/>		
TOTAL AREA	741.85 SQ.FT.	68.92 SQ.M.

KEY SECTION



KEY PLAN



FLOOR PLAN 1. All dimensions are in imperial and metric, and measured from finish to finish excluding construction tolerances. 2. All materials, dimensions, and drawings are approximate only. 3. Information is subject to change without notice, at developer's absolute discretion. 4. Actual area may vary from the stated area. 5. Drawings not to scale. 6. All images used are for illustrative purposes only and do not represent the actual size, features, specifications, fittings, and furnishings. 7. The developer reserves the right to make revisions / alterations, at it's absolute discretion, without any liability whatsoever.

Terra Woods

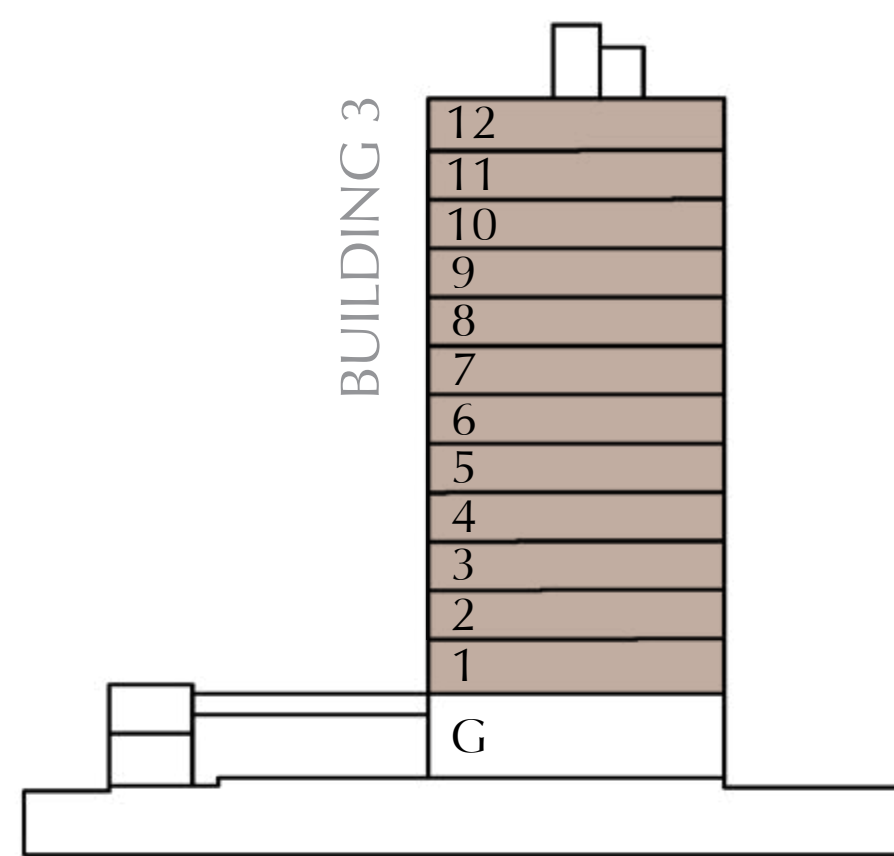
EXPO LIVING

PLOT4-BUILDING 3 1 BEDROOM TYPE-2B

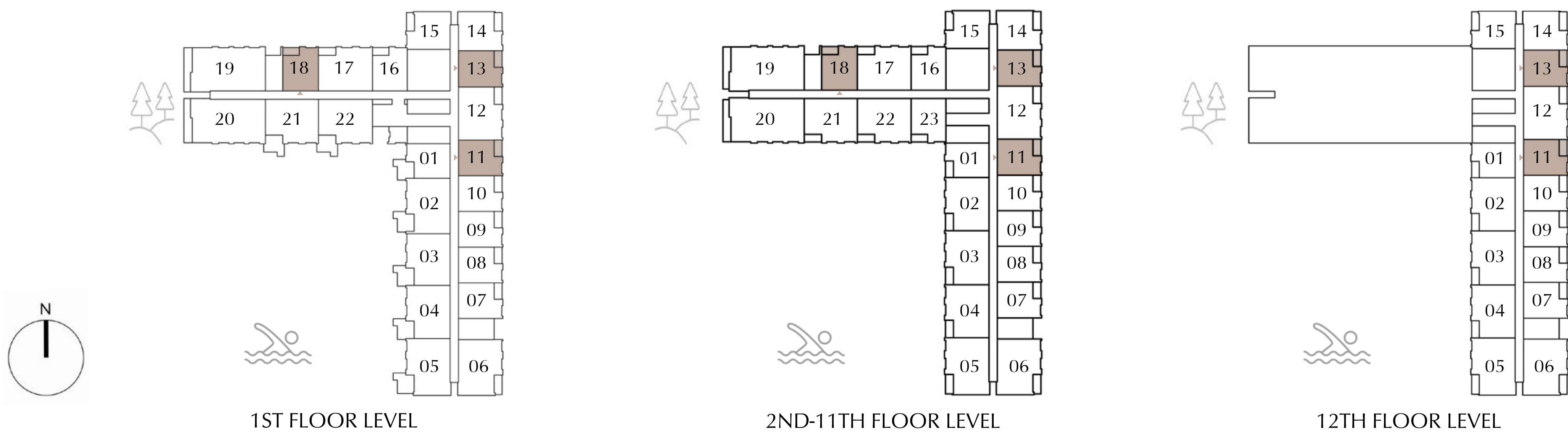
LEVEL 01-11 : UNIT - 11, 13 & 18
LEVEL 12 : UNIT - 11 & 13

SUITE AREA	668.87 SQ.FT.	62.14SQ.M.
BALCONY AREA	77.50 SQ.FT.	7.20SQ.M.
<hr/>		
TOTAL AREA	746.37 SQ.FT.	69.34SQ.M.

KEY SECTION



KEY PLAN



FLOOR PLAN 1. All dimensions are in imperial and metric, and measured from finish to finish excluding construction tolerances. 2. All materials, dimensions, and drawings are approximate only. 3. Information is subject to change without notice, at developer's absolute discretion. 4. Actual area may vary from the stated area. 5. Drawings not to scale. 6. All images used are for illustrative purposes only and do not represent the actual size, features, specifications, fittings, and furnishings. 7. The developer reserves the right to make revisions / alterations, at it's absolute discretion, without any liability whatsoever.

Terra Woods

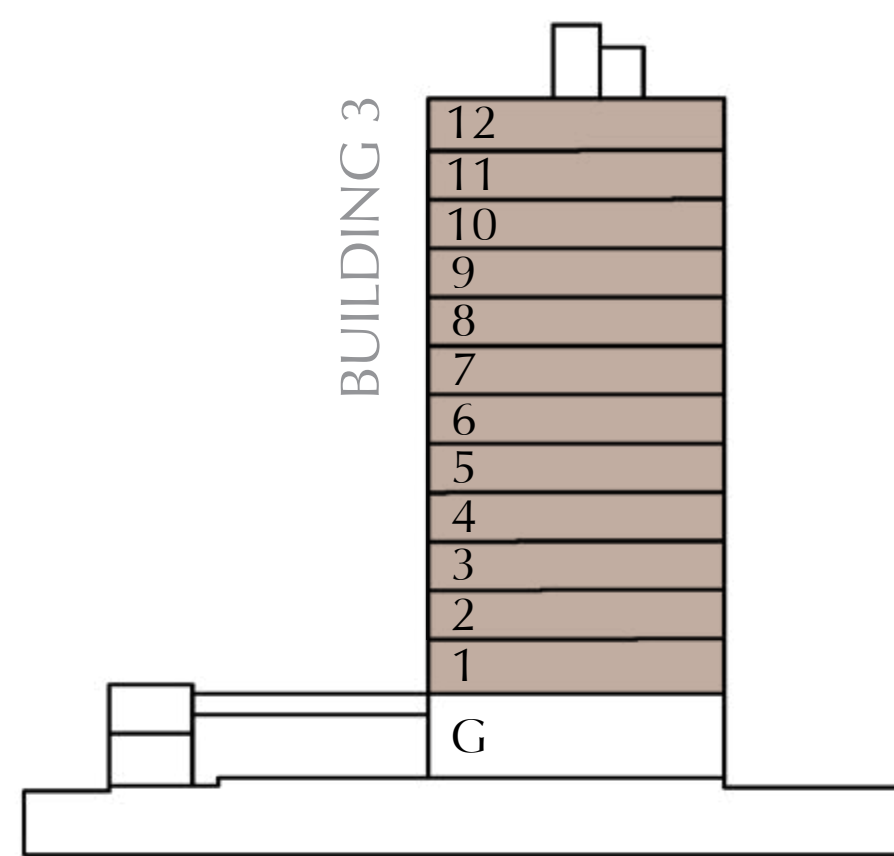
EXPO LIVING

PLOT4-BUILDING 3 1 BEDROOM TYPE-2B

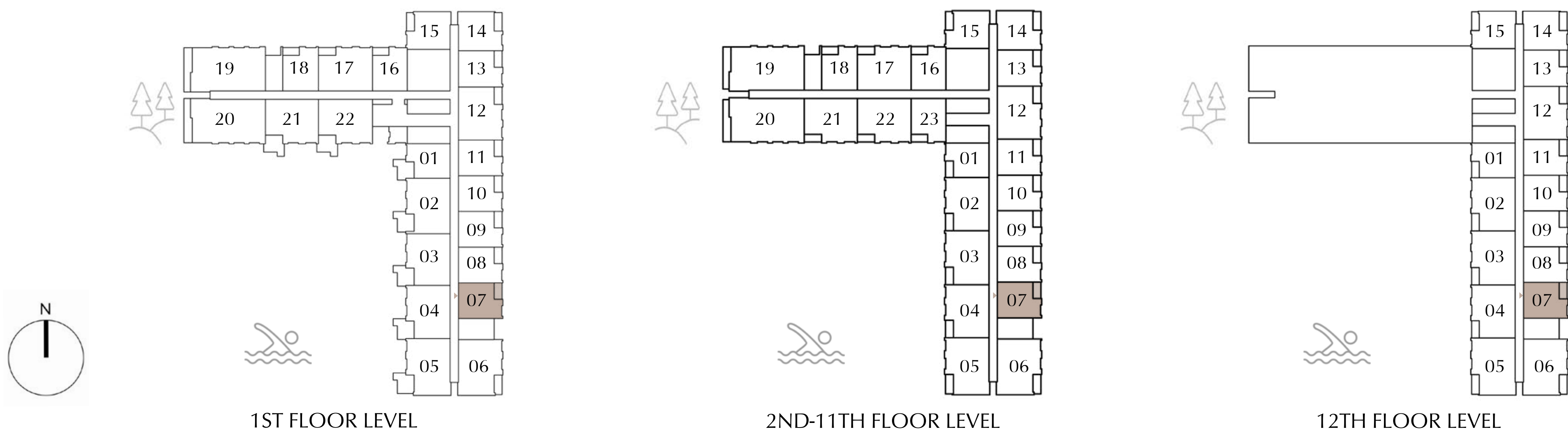
LEVEL 01-12 : UNIT -07

SUITE AREA	683.51 SQ.FT.	63.50SQ.M.
BALCONY AREA	77.39 SQ.FT.	7.19SQ.M.
<hr/>		
TOTAL AREA	760.90 SQ.FT.	70.69 SQ.M.

KEY SECTION



KEY PLAN



FLOOR PLAN 1. All dimensions are in imperial and metric, and measured from finish to finish excluding construction tolerances. 2. All materials, dimensions, and drawings are approximate only. 3. Information is subject to change without notice, at developer's absolute discretion. 4. Actual area may vary from the stated area. 5. Drawings not to scale. 6. All images used are for illustrative purposes only and do not represent the actual size, features, specifications, fittings, and furnishings. 7. The developer reserves the right to make revisions / alterations, at it's absolute discretion, without any liability whatsoever.

Terra Woods

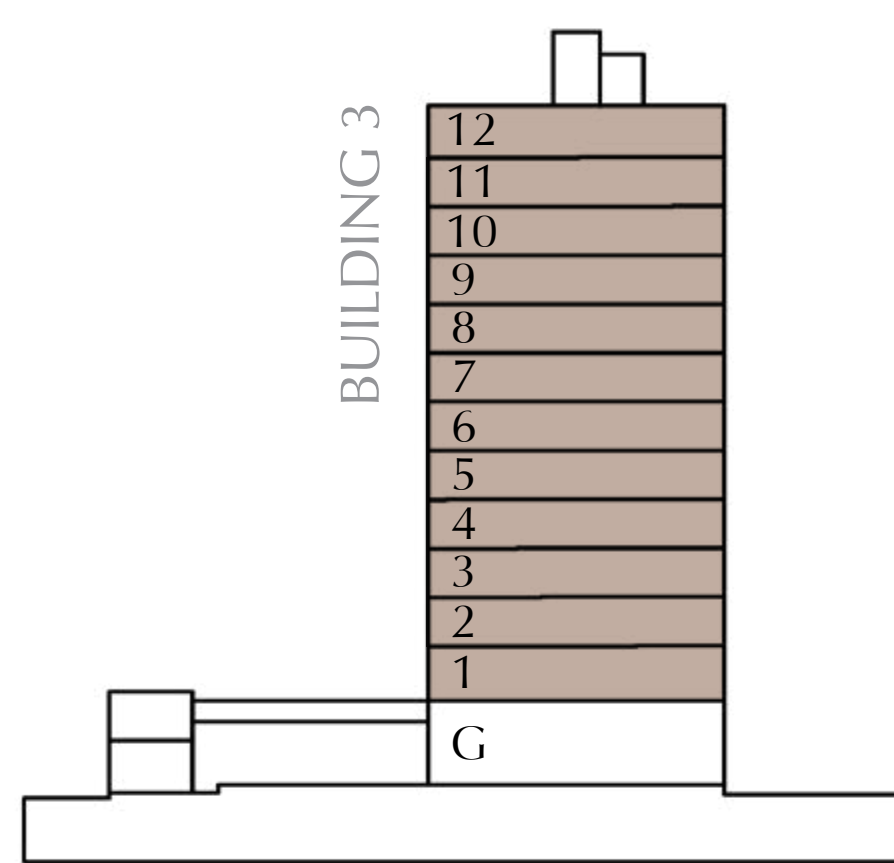
EXPO LIVING

PLOT4-BUILDING 3 1 BEDROOM TYPE-2B

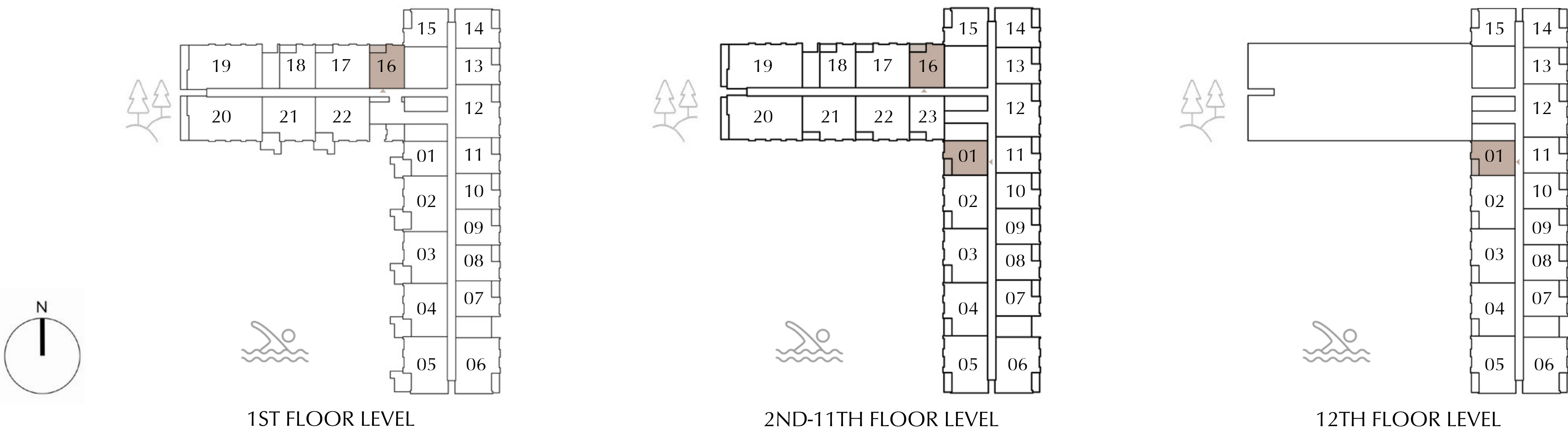
LEVEL 01 : UNIT - 16
LEVEL 02-11 : UNIT - 1 & 16
LEVEL 12 : UNIT - 1

SUITE AREA	688.89 SQ.FT.	64.00SQ.M.
BALCONY AREA	77.50 SQ.FT.	7.20SQ.M.
<hr/>		
TOTAL AREA	766.39 SQ.FT.	71.20SQ.M.

KEY SECTION



KEY PLAN



FLOOR PLAN 1. All dimensions are in imperial and metric, and measured from finish to finish excluding construction tolerances. 2. All materials, dimensions, and drawings are approximate only. 3. Information is subject to change without notice, at developer's absolute discretion. 4. Actual area may vary from the stated area. 5. Drawings not to scale. 6. All images used are for illustrative purposes only and do not represent the actual size, features, specifications, fittings, and furnishings. 7. The developer reserves the right to make revisions / alterations, at it's absolute discretion, without any liability whatsoever.

Terra Woods

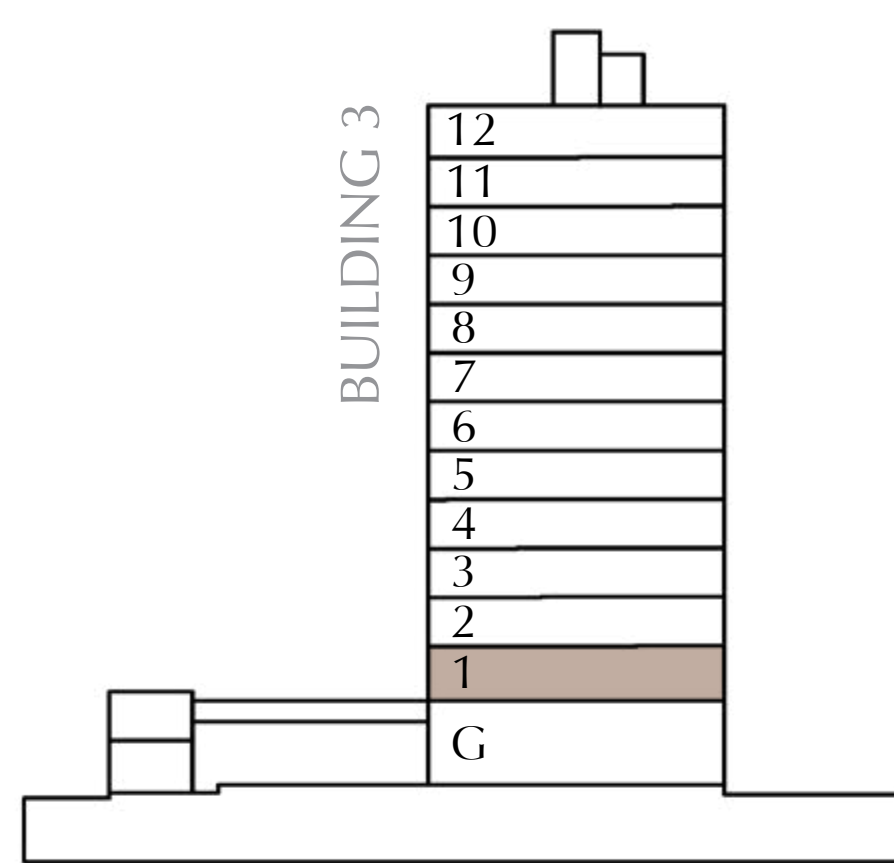
EXPO LIVING

PLOT4-BUILDING 3
1 BEDROOM TYPE-2B.1

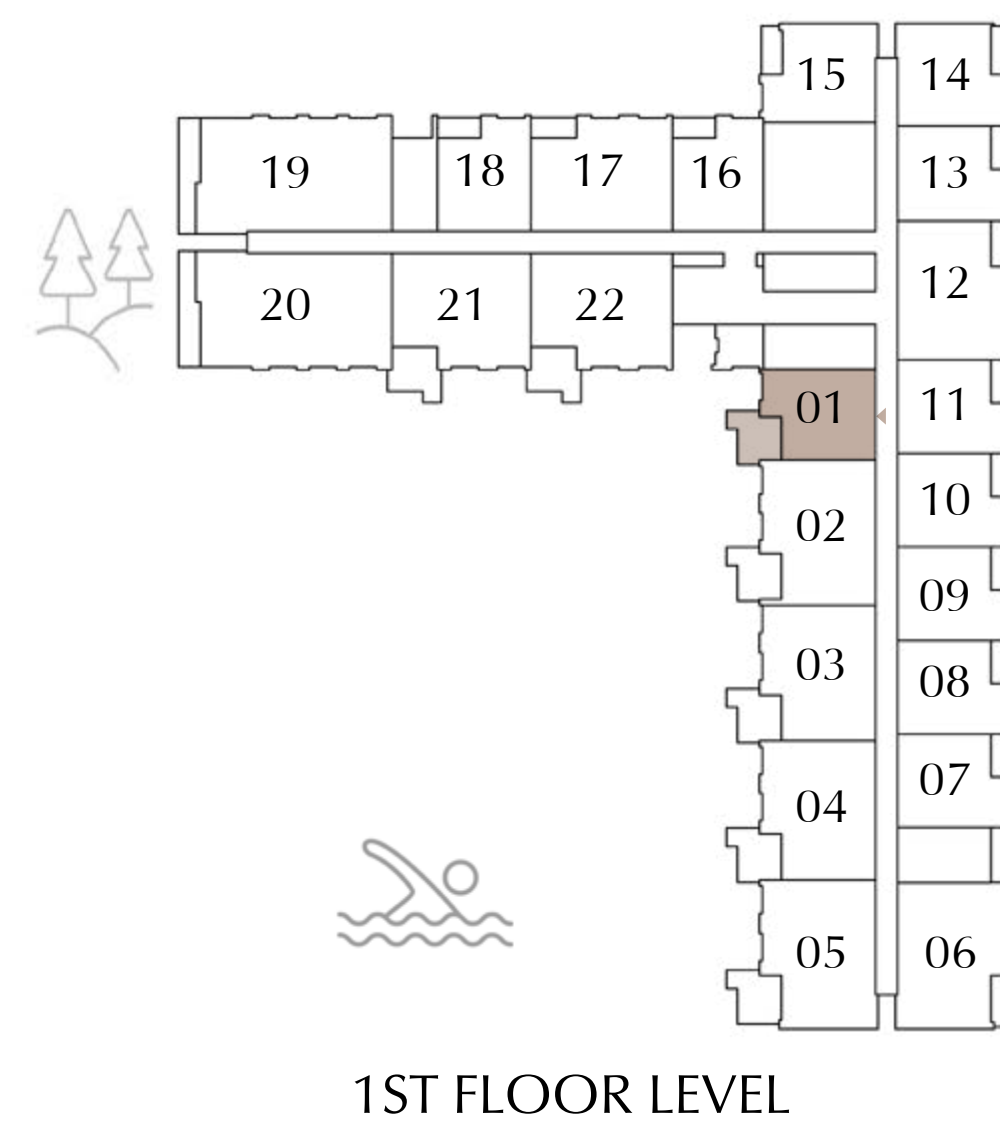
LEVEL 01 : UNIT - 01

SUITE AREA	687.81 SQ.FT.	63.90SQ.M.
BALCONY AREA	177.71 SQ.FT.	16.51 SQ.M.
<hr/>		
TOTAL AREA	865.53 SQ.FT.	80.41 SQ.M.

KEY SECTION



KEY PLAN



1ST FLOOR LEVEL



FLOOR PLAN 1. All dimensions are in imperial and metric, and measured from finish to finish excluding construction tolerances. 2. All materials, dimensions, and drawings are approximate only. 3. Information is subject to change without notice, at developer's absolute discretion. 4. Actual area may vary from the stated area. 5. Drawings not to scale. 6. All images used are for illustrative purposes only and do not represent the actual size, features, specifications, fittings, and furnishings. 7. The developer reserves the right to make revisions / alterations, at it's absolute discretion, without any liability whatsoever.

Terra Woods

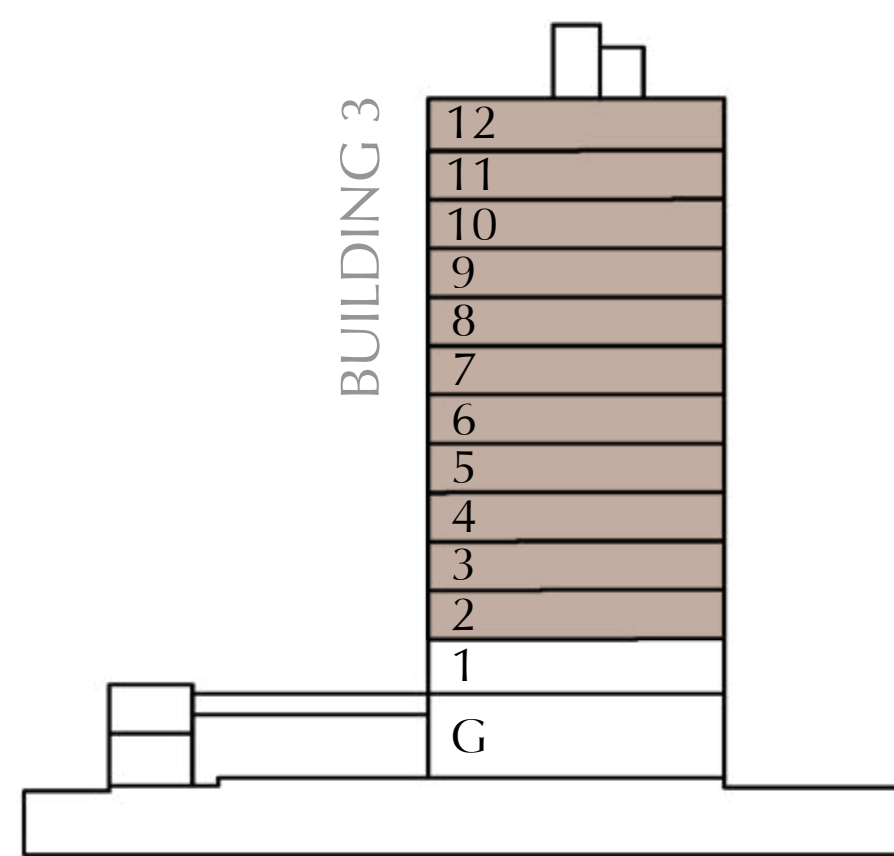
EXPO LIVING

PLOT4-BUILDING 3 2 BEDROOM TYPE-1A

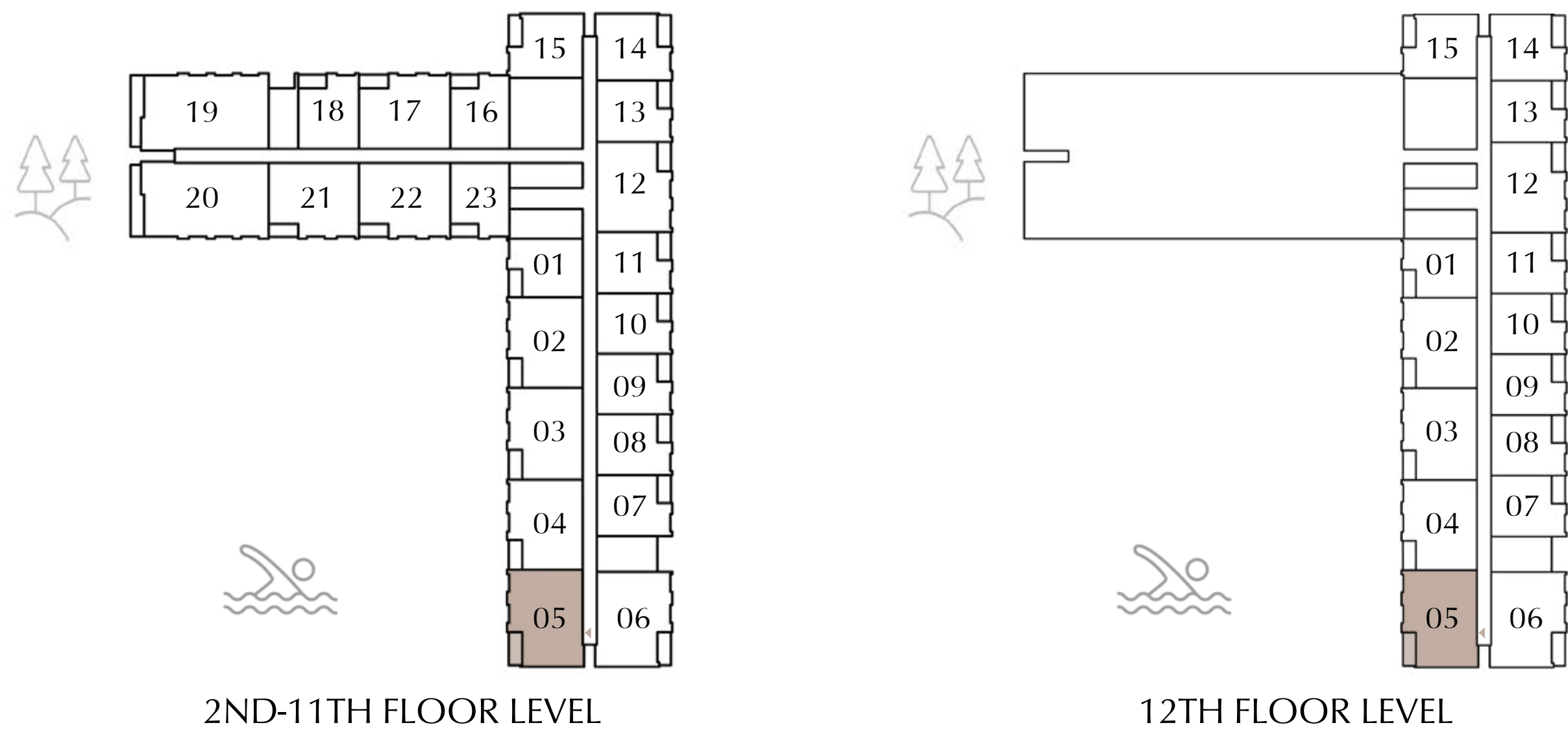
LEVEL 02-12 : UNIT - 05

SUITE AREA	1036.78 SQ.FT.	96.32 SQ.M.
BALCONY AREA	83.31 SQ.FT.	7.74 SQ.M.
<hr/>		
TOTAL AREA	1120.09 SQ.FT.	104.06 SQ.M.

KEY SECTION



KEY PLAN



FLOOR PLAN 1. All dimensions are in imperial and metric, and measured from finish to finish excluding construction tolerances. 2. All materials, dimensions, and drawings are approximate only. 3. Information is subject to change without notice, at developer's absolute discretion. 4. Actual area may vary from the stated area. 5. Drawings not to scale. 6. All images used are for illustrative purposes only and do not represent the actual size, features, specifications, fittings, and furnishings. 7. The developer reserves the right to make revisions / alterations, at it's absolute discretion, without any liability whatsoever.

Terra Woods

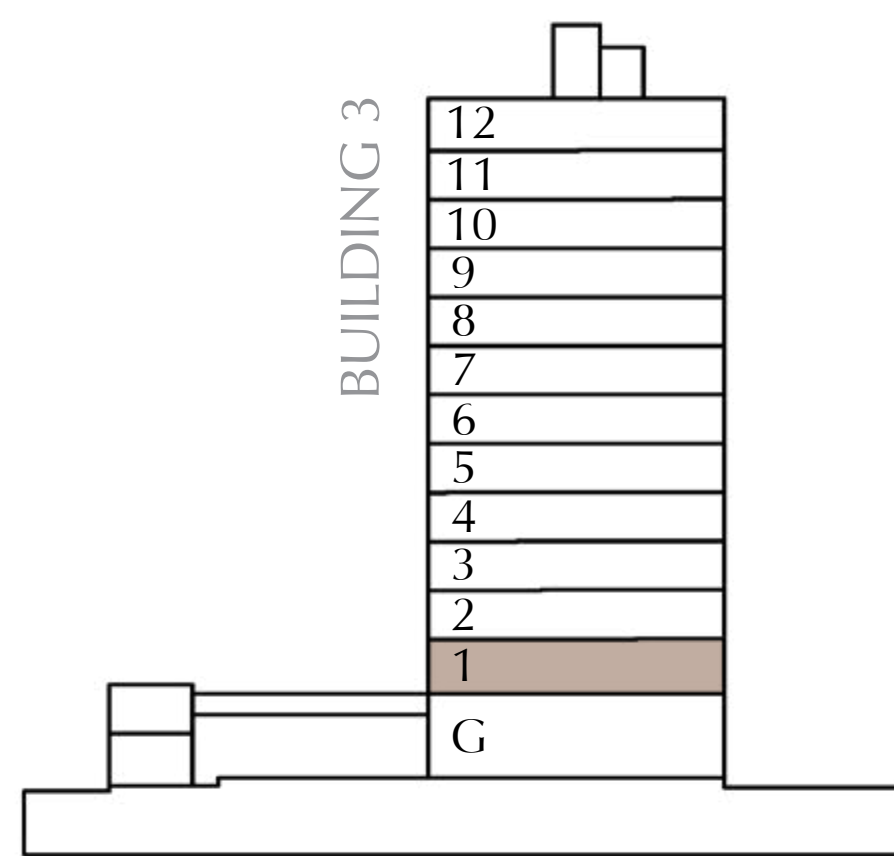
EXPO LIVING

PLOT4-BUILDING 3
2 BEDROOM TYPE-1A.1

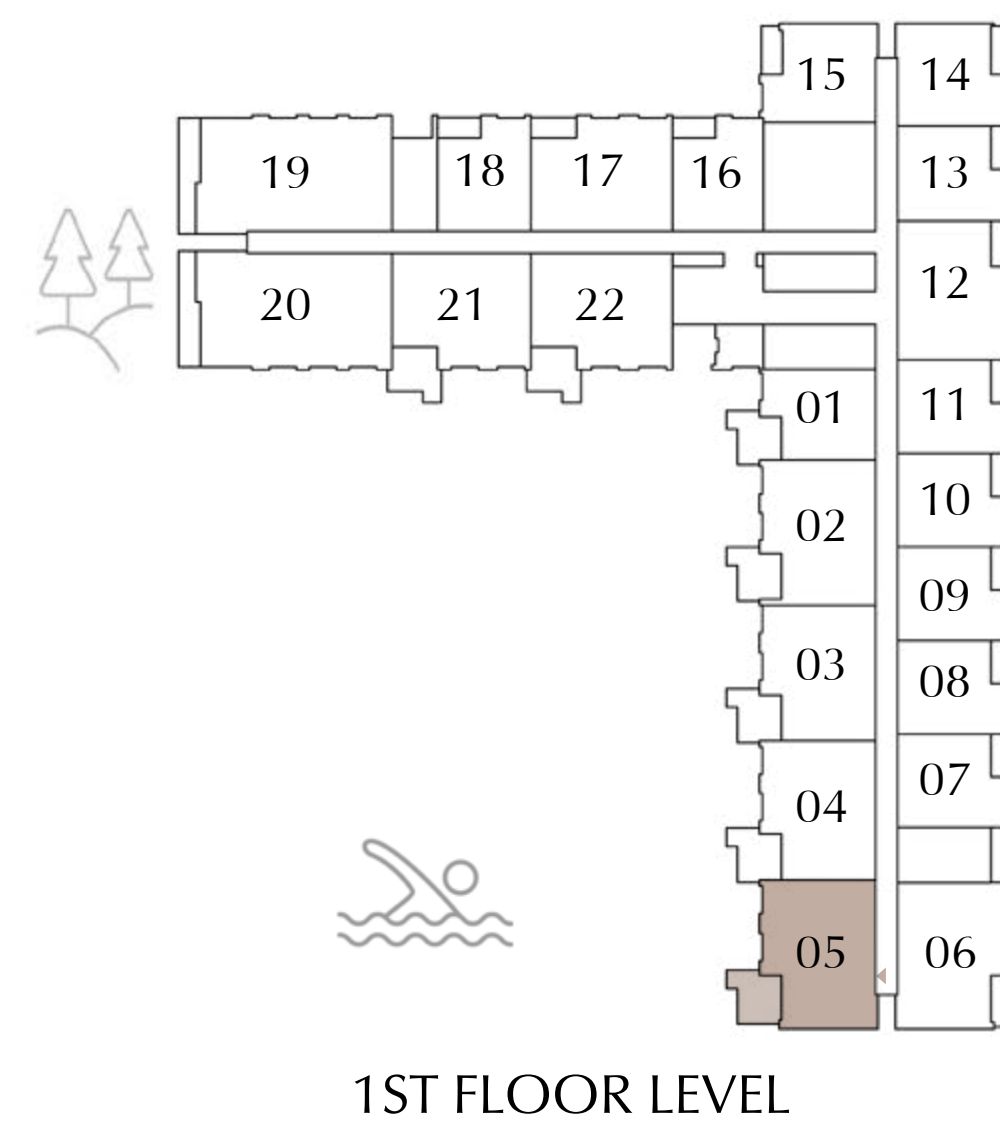
LEVEL 01 : UNIT -05

SUITE AREA	1035.60 SQ.FT.	96.21 SQ.M.
BALCONY AREA	185.46 SQ.FT.	17.23 SQ.M.
TOTAL AREA	1221.06 SQ.FT.	113.44 SQ.M.

KEY SECTION



KEY PLAN



1ST FLOOR LEVEL



FLOOR PLAN 1. All dimensions are in imperial and metric, and measured from finish to finish excluding construction tolerances. 2. All materials, dimensions, and drawings are approximate only. 3. Information is subject to change without notice, at developer's absolute discretion. 4. Actual area may vary from the stated area. 5. Drawings not to scale. 6. All images used are for illustrative purposes only and do not represent the actual size, features, specifications, fittings, and furnishings. 7. The developer reserves the right to make revisions / alterations, at it's absolute discretion, without any liability whatsoever.

Terra Woods

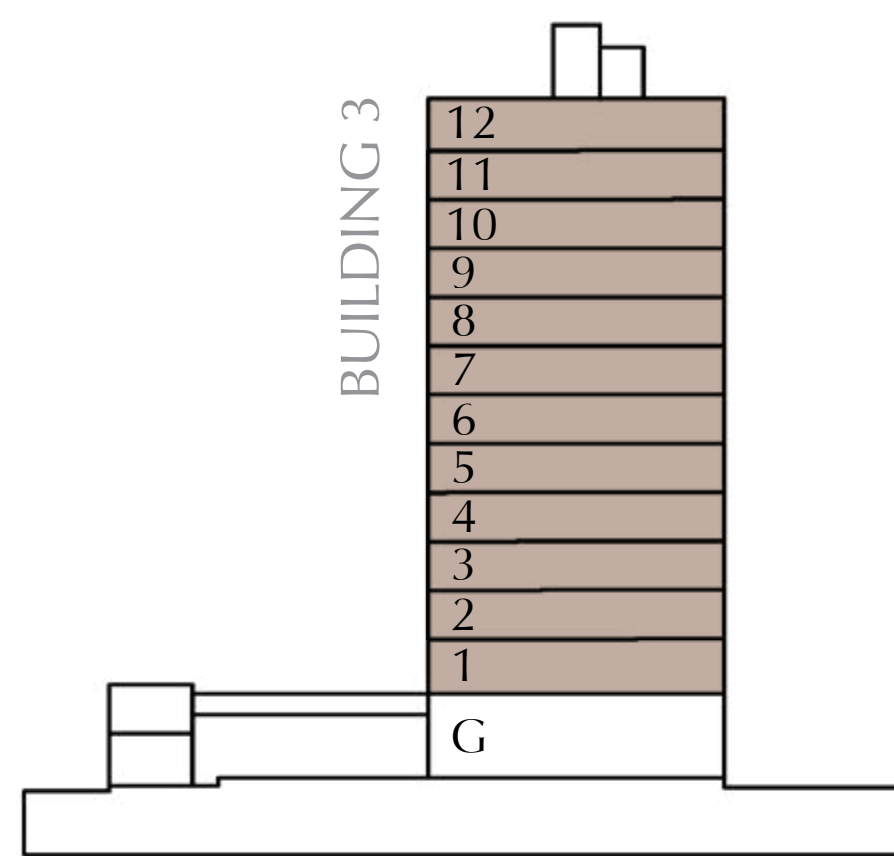
EXPO LIVING

PLOT4-BUILDING 3
2 BEDROOM TYPE-1B

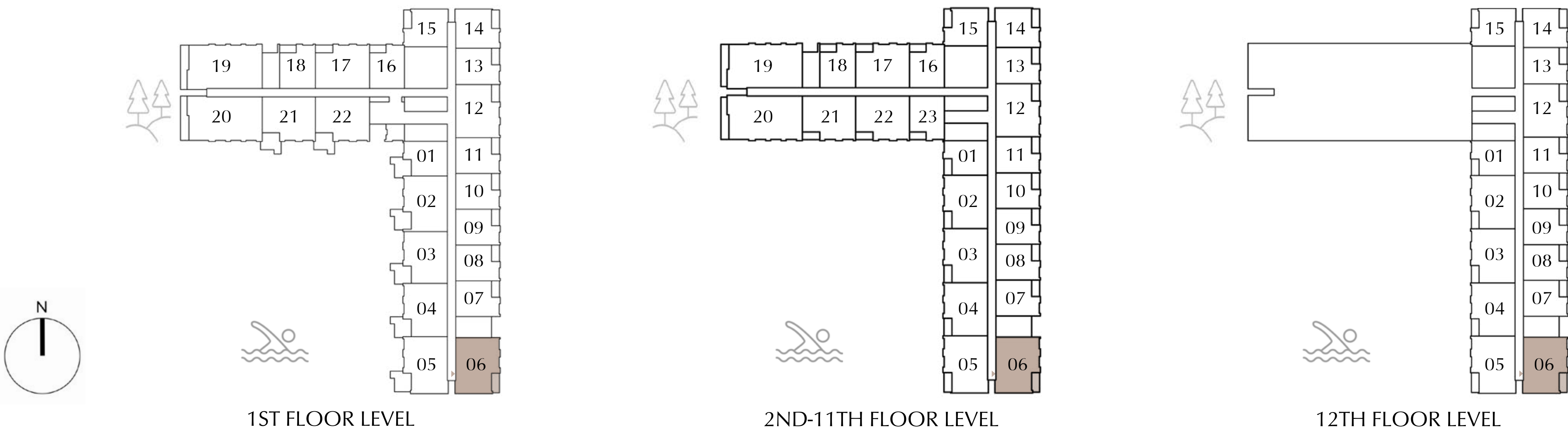
LEVEL 01-12: UNIT -06

SUITE AREA	1035.49 SQ.FT.	96.20SQ.M.
BALCONY AREA	83.31 SQ.FT.	7.74SQ.M.
TOTAL AREA	1118.80SQ.FT.	103.94SQ.M.

KEY SECTION



KEY PLAN



FLOOR PLAN 1. All dimensions are in imperial and metric, and measured from finish to finish excluding construction tolerances. 2. All materials, dimensions, and drawings are approximate only. 3. Information is subject to change without notice, at developer's absolute discretion. 4. Actual area may vary from the stated area. 5. Drawings not to scale. 6. All images used are for illustrative purposes only and do not represent the actual size, features, specifications, fittings, and furnishings. 7. The developer reserves the right to make revisions / alterations, at it's absolute discretion, without any liability whatsoever.

Terra Woods

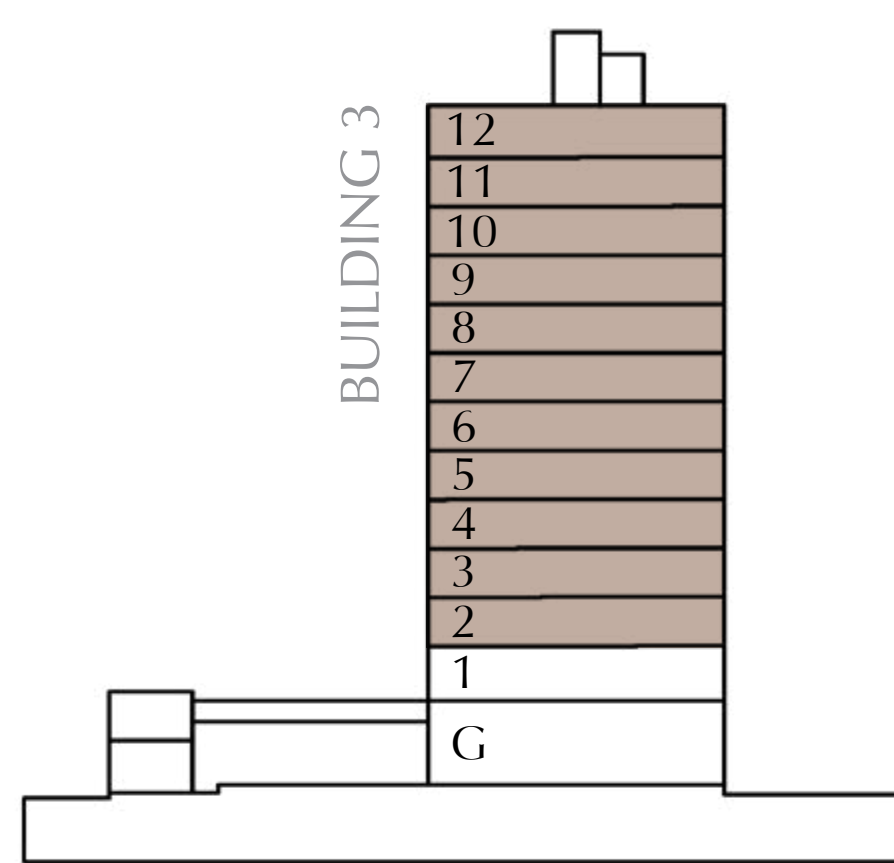
EXPO LIVING

PLOT4-BUILDING 3
2 BEDROOM TYPE-2A

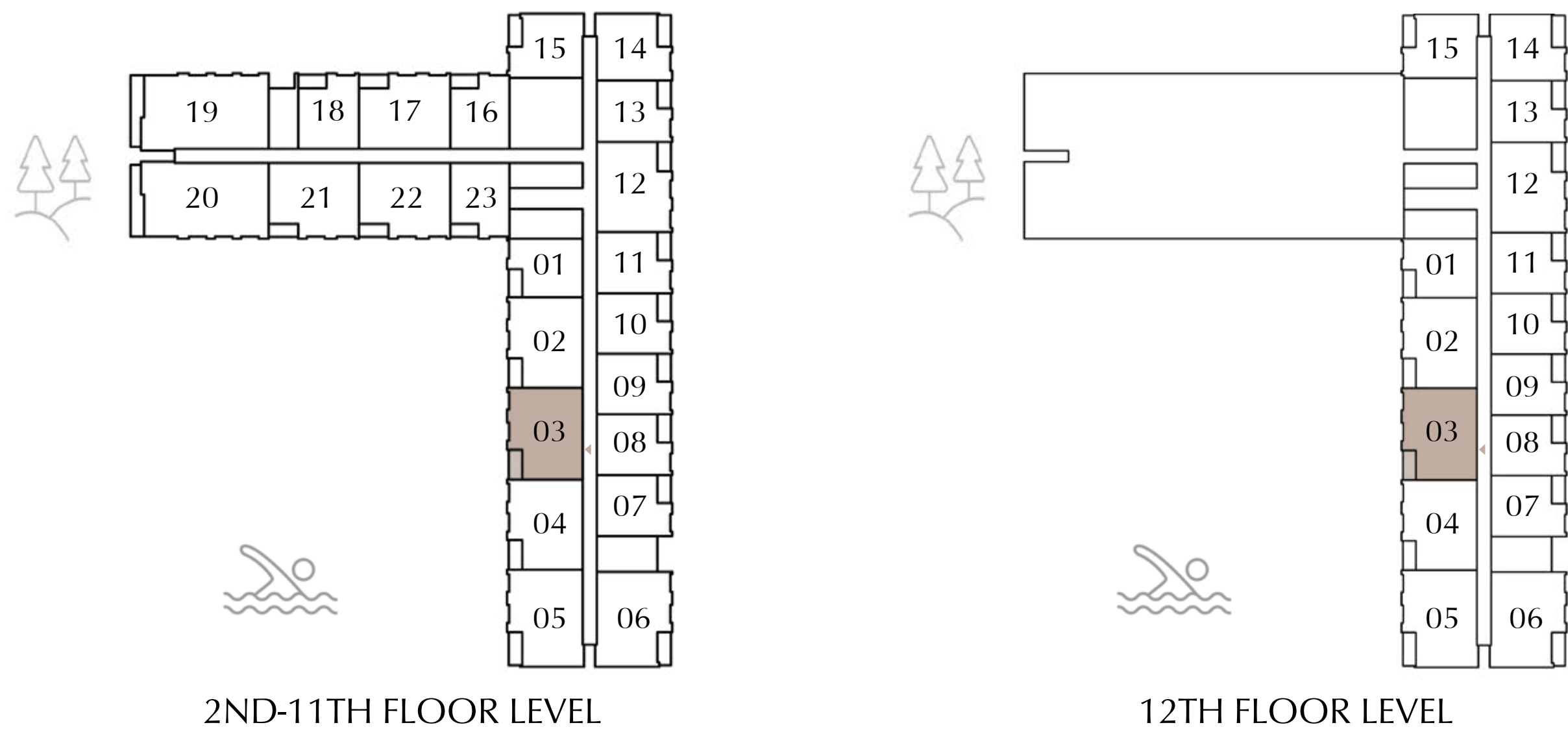
LEVEL 02-12 : UNIT -03

SUITE AREA	1039.47 SQ.FT.	96.57SQ.M.
BALCONY AREA	81.05 SQ.FT.	7.53 SQ.M.
TOTAL AREA	1120.52 SQ.FT.	104.10SQ.M.

KEY SECTION



KEY PLAN



FLOOR PLAN 1. All dimensions are in imperial and metric, and measured from finish to finish excluding construction tolerances. 2. All materials, dimensions, and drawings are approximate only. 3. Information is subject to change without notice, at developer's absolute discretion. 4. Actual area may vary from the stated area. 5. Drawings not to scale. 6. All images used are for illustrative purposes only and do not represent the actual size, features, specifications, fittings, and furnishings. 7. The developer reserves the right to make revisions / alterations, at it's absolute discretion, without any liability whatsoever.

Terra Woods

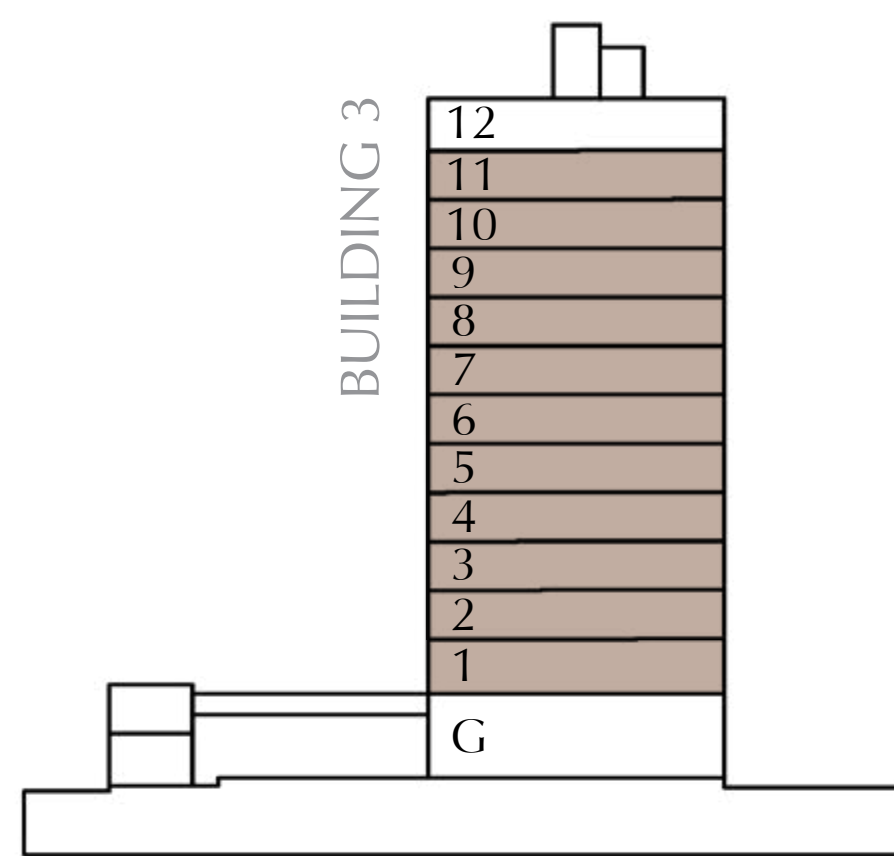
EXPO LIVING

PLOT4-BUILDING 3 2 BEDROOM TYPE-2A

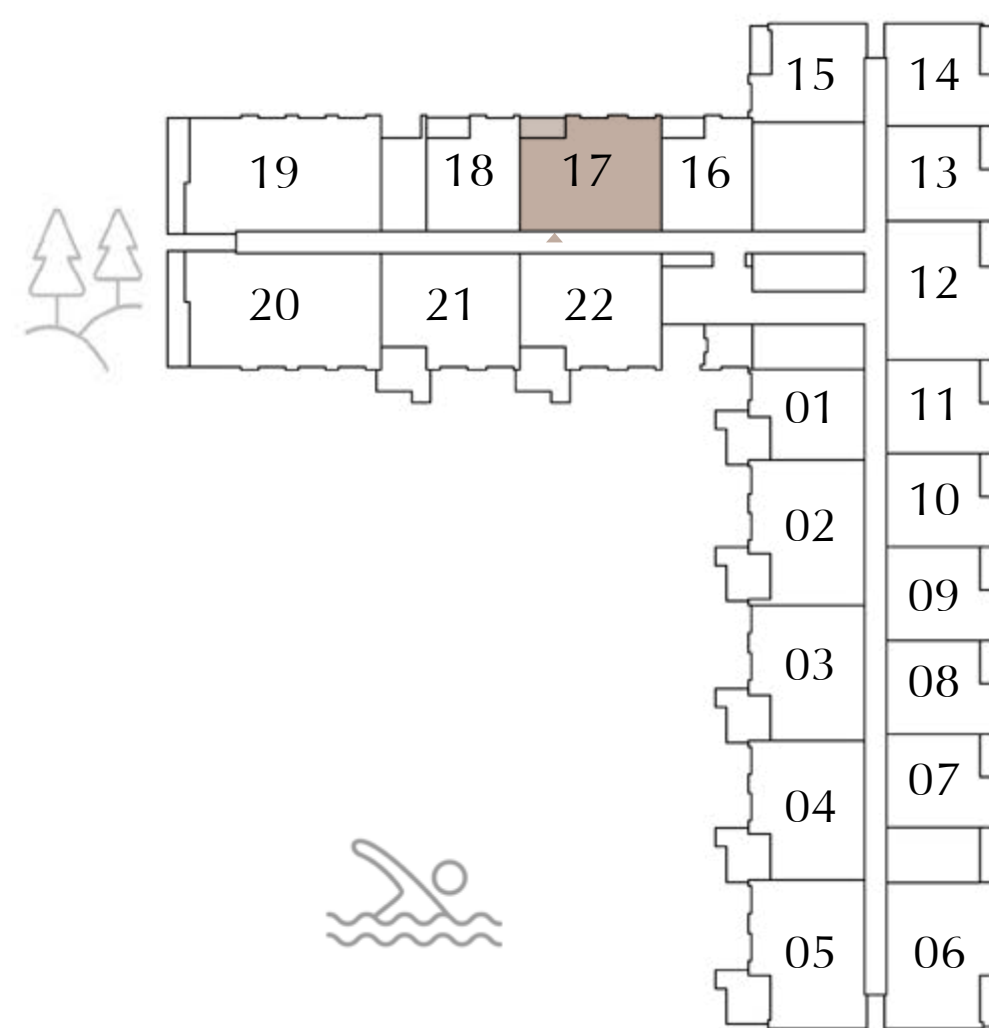
LEVEL 01-11 : UNIT - 17

SUITE AREA	1045.28 SQ.FT.	97.11 SQ.M.
BALCONY AREA	81.05 SQ.FT.	7.53 SQ.M.
<hr/>		
TOTAL AREA	1126.34 SQ.FT.	104.64 SQ.M.

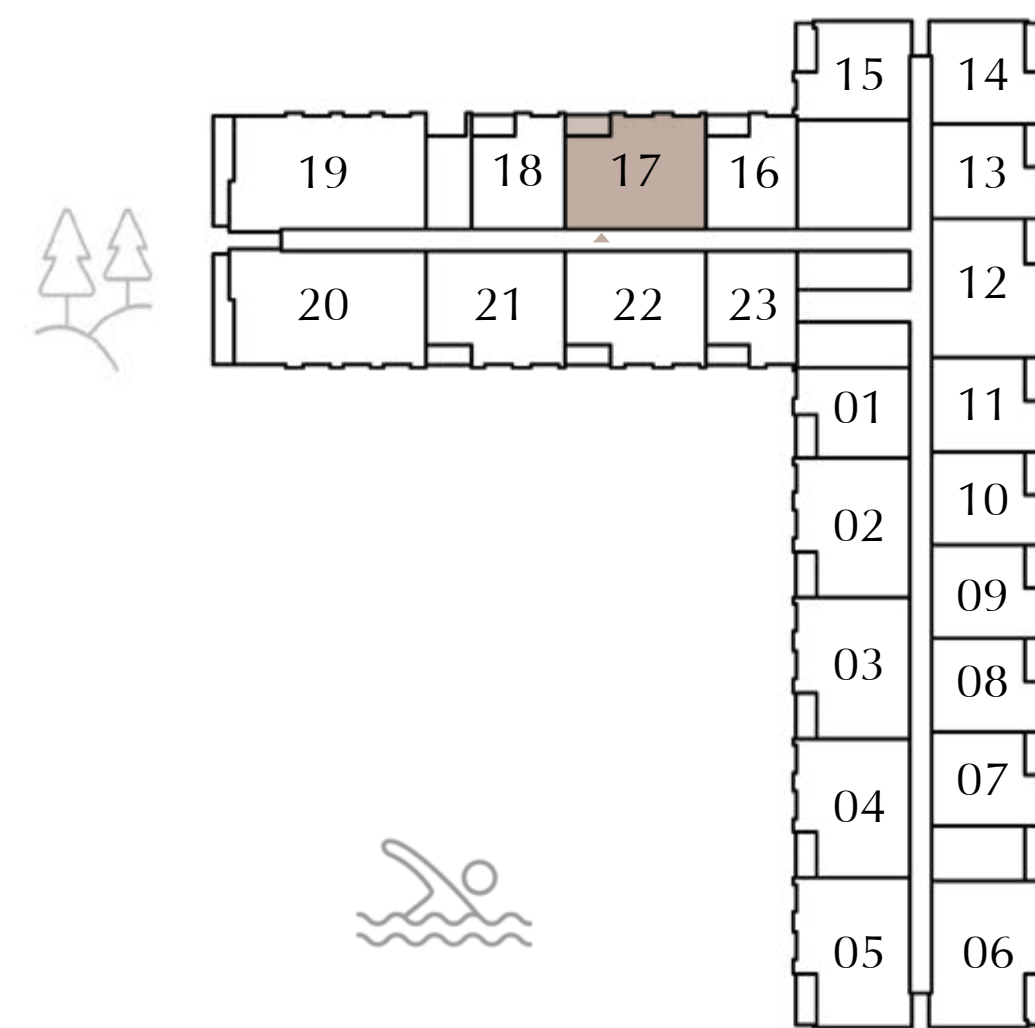
KEY SECTION



KEY PLAN



1ST FLOOR LEVEL



2ND-11TH FLOOR LEVEL



FLOOR PLAN 1. All dimensions are in imperial and metric, and measured from finish to finish excluding construction tolerances. 2. All materials, dimensions, and drawings are approximate only. 3. Information is subject to change without notice, at developer's absolute discretion. 4. Actual area may vary from the stated area. 5. Drawings not to scale. 6. All images used are for illustrative purposes only and do not represent the actual size, features, specifications, fittings, and furnishings. 7. The developer reserves the right to make revisions / alterations, at it's absolute discretion, without any liability whatsoever.

Terra Woods

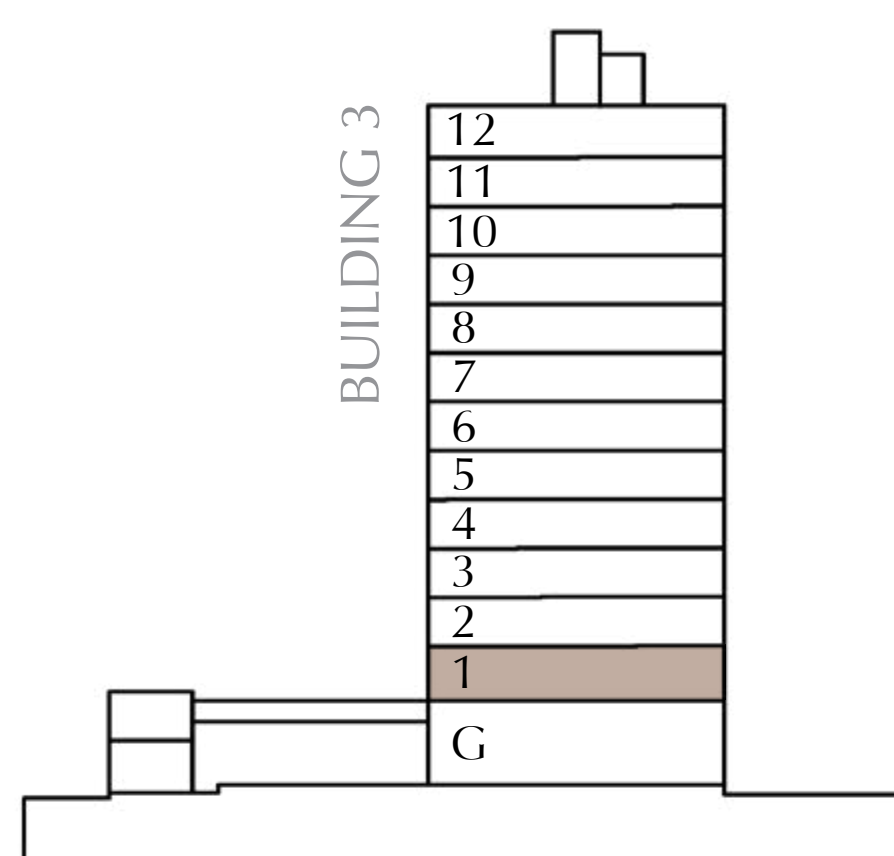
EXPO LIVING

PLOT4-BUILDING 3 2 BEDROOM TYPE-2A.1

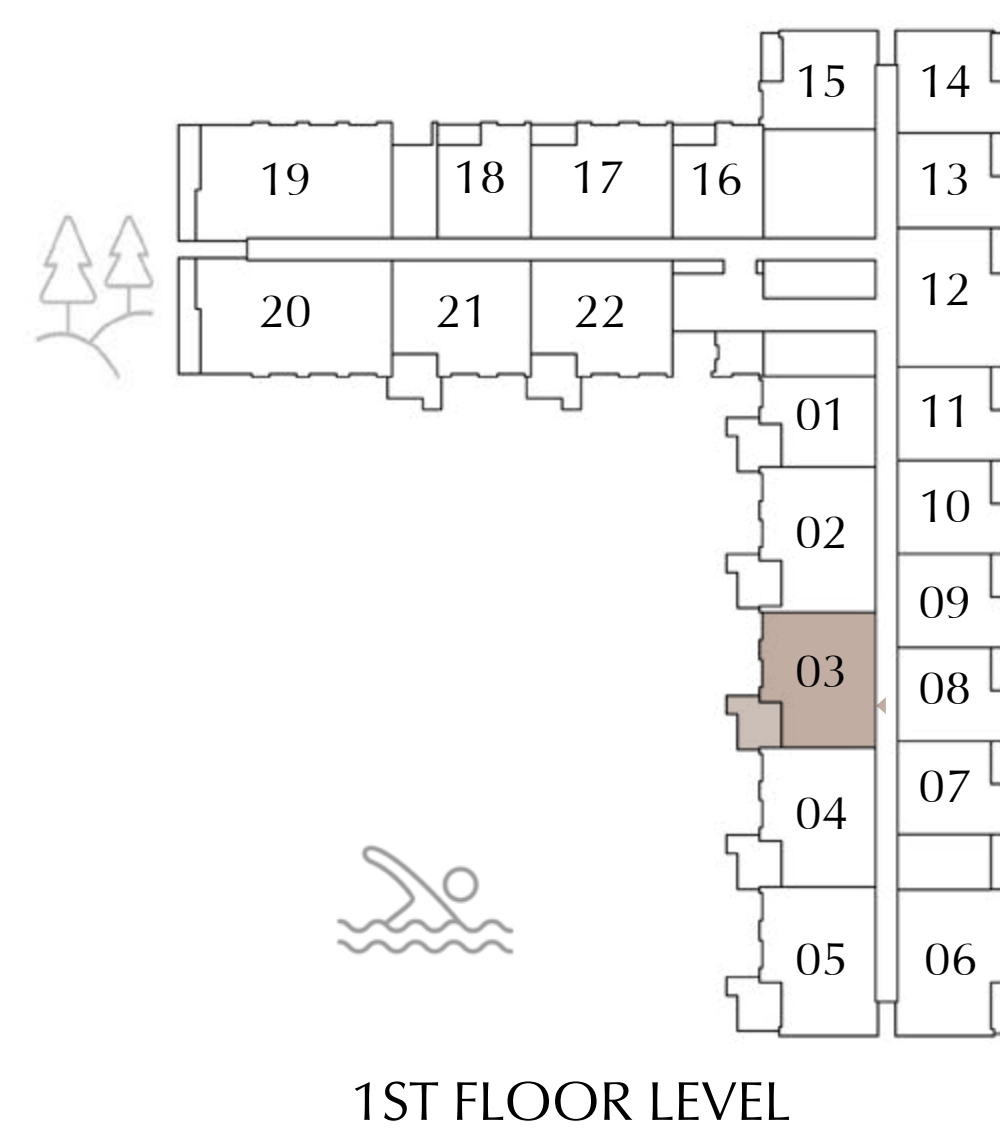
LEVEL 01 : UNIT -03

SUITE AREA	1038.39 SQ.FT.	96.47 SQ.M.
BALCONY AREA	185.46 SQ.FT.	17.23 SQ.M.
TOTAL AREA	1223.86 SQ.FT.	113.70 SQ.M.

KEY SECTION



KEY PLAN



FLOOR PLAN 1. All dimensions are in imperial and metric, and measured from finish to finish excluding construction tolerances. 2. All materials, dimensions, and drawings are approximate only. 3. Information is subject to change without notice, at developer's absolute discretion. 4. Actual area may vary from the stated area. 5. Drawings not to scale. 6. All images used are for illustrative purposes only and do not represent the actual size, features, specifications, fittings, and furnishings. 7. The developer reserves the right to make revisions / alterations, at it's absolute discretion, without any liability whatsoever.

Terra Woods

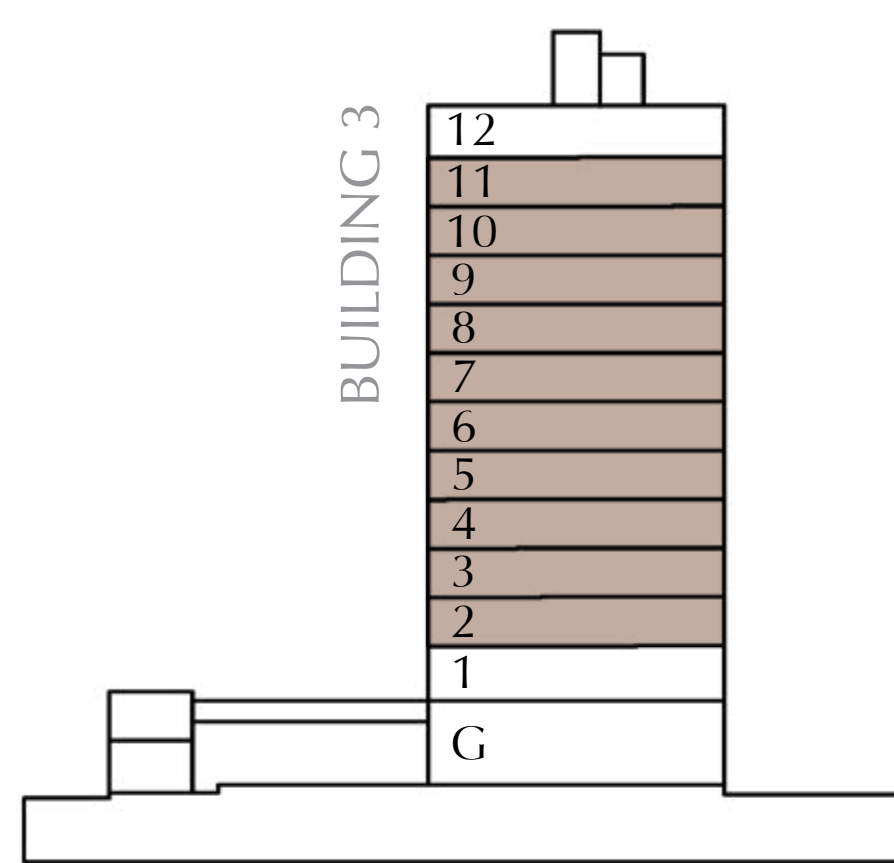
EXPO LIVING

PLOT4-BUILDING 3
2 BEDROOM TYPE-2B

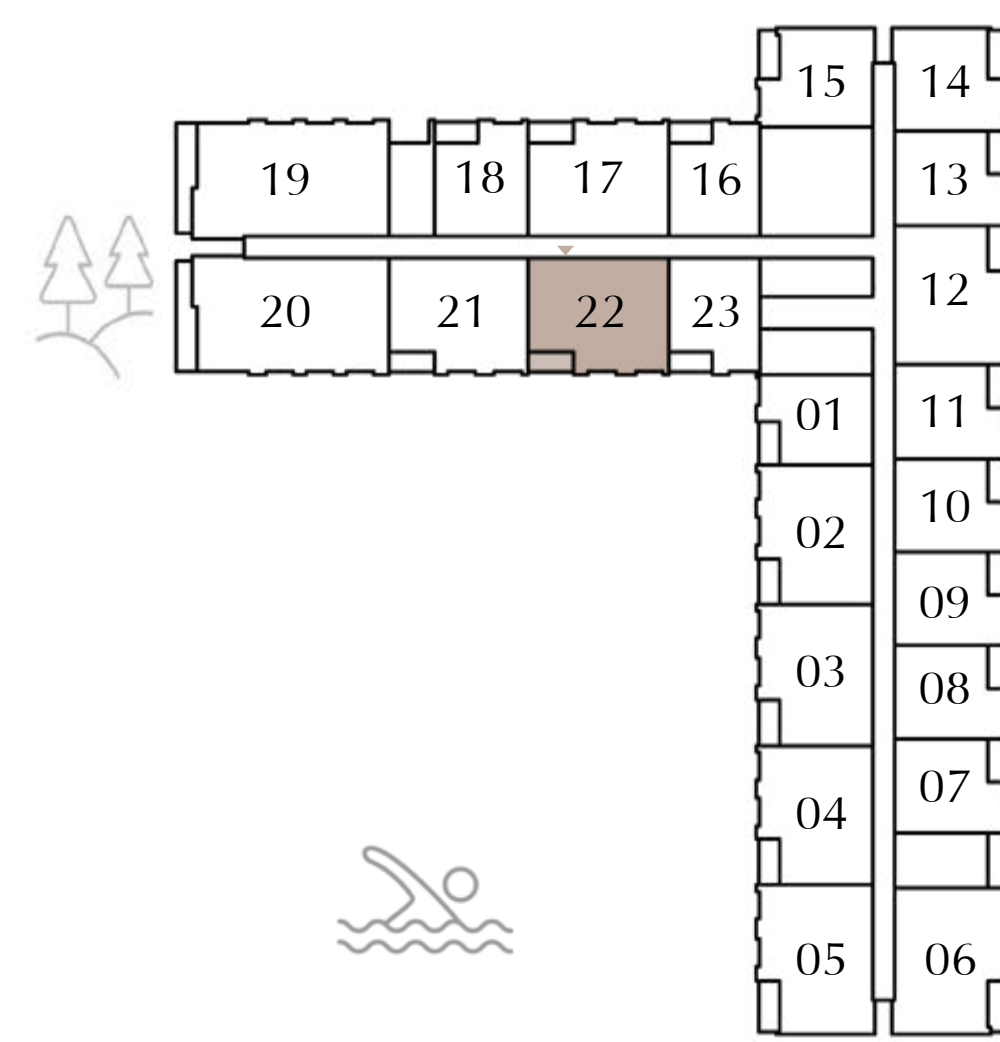
LEVEL 02-11 : UNIT - 22

SUITE AREA	1045.93 SQ.FT.	97.17SQ.M.
BALCONY AREA	81.05 SQ.FT.	7.53 SQ.M.
TOTAL AREA	1126.98 SQ.FT.	104.70SQ.M.

KEY SECTION



KEY PLAN



2ND-11TH FLOOR LEVEL



FLOOR PLAN 1. All dimensions are in imperial and metric, and measured from finish to finish excluding construction tolerances. 2. All materials, dimensions, and drawings are approximate only. 3. Information is subject to change without notice, at developer's absolute discretion. 4. Actual area may vary from the stated area. 5. Drawings not to scale. 6. All images used are for illustrative purposes only and do not represent the actual size, features, specifications, fittings, and furnishings. 7. The developer reserves the right to make revisions / alterations, at it's absolute discretion, without any liability whatsoever.

Terra Woods

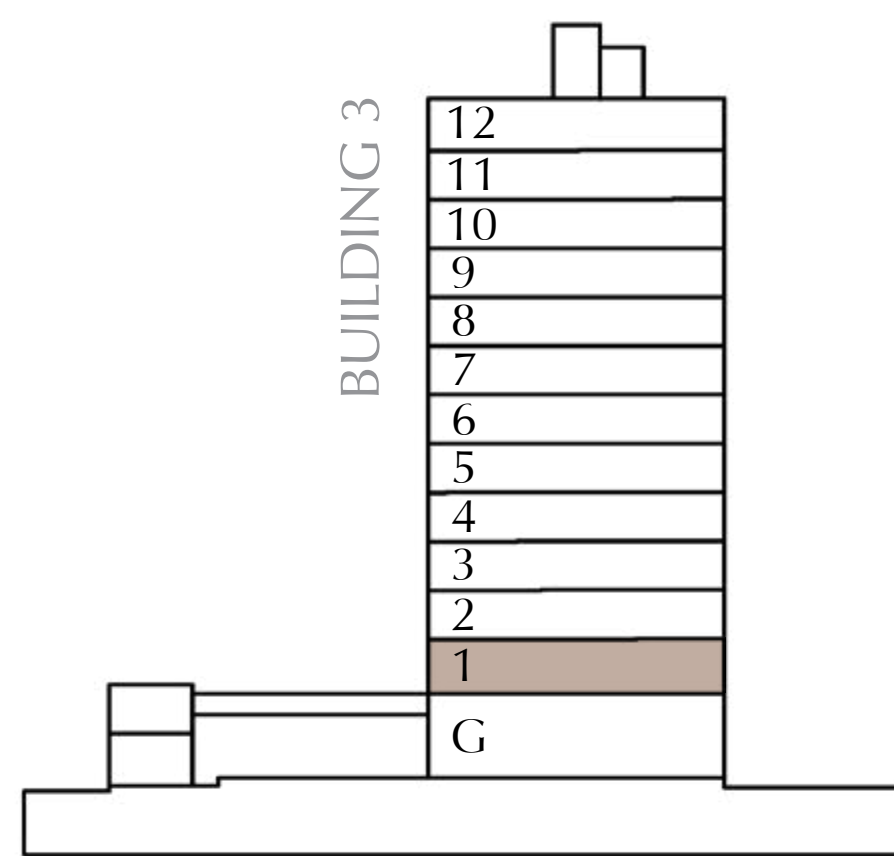
EXPO LIVING

PLOT4-BUILDING 3 2 BEDROOM TYPE-2B.1

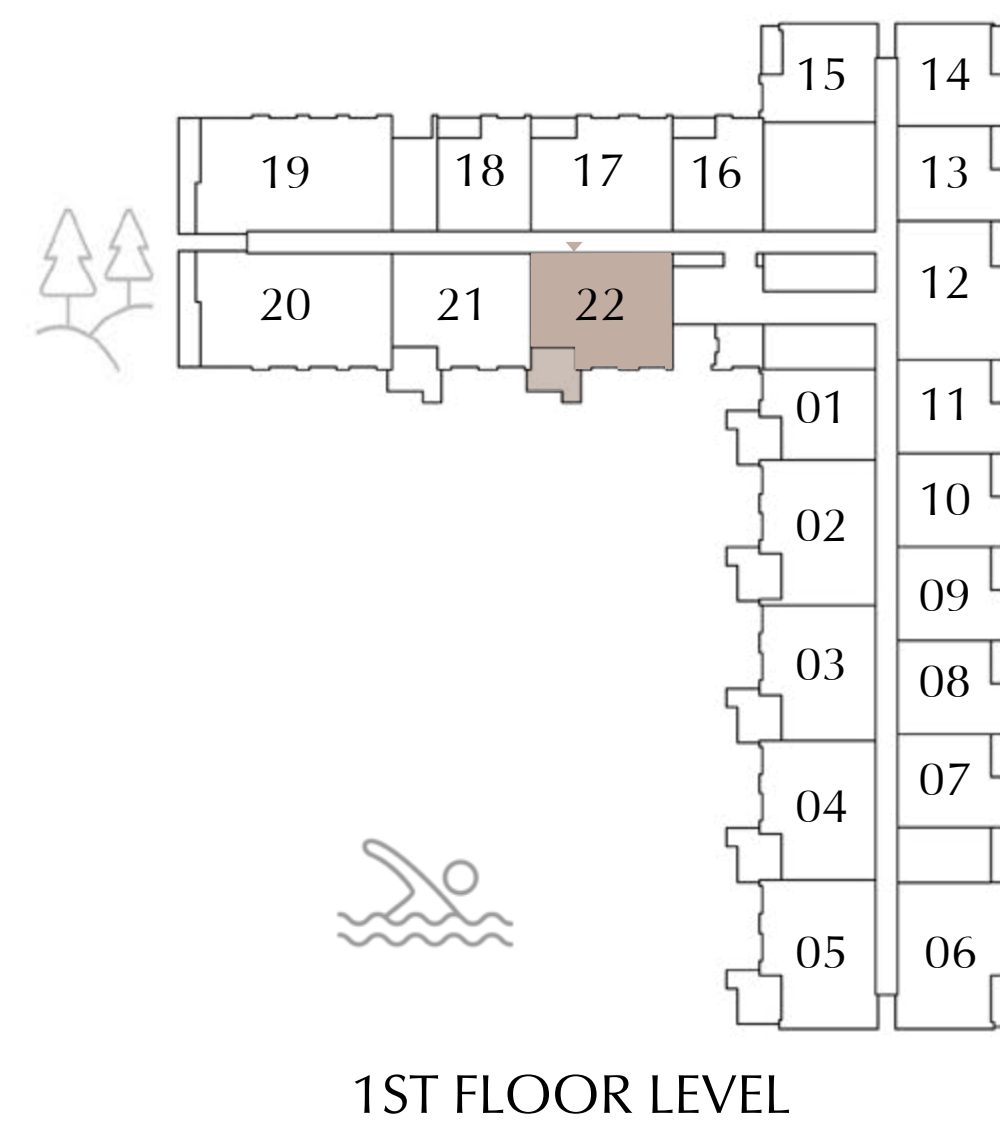
LEVEL 01 : UNIT - 22

SUITE AREA	1045.28 SQ.FT.	97.11 SQ.M.
BALCONY AREA	185.46 SQ.FT.	17.23 SQ.M.
<hr/>		
TOTAL AREA	1230.75 SQ.FT.	114.34 SQ.M.

KEY SECTION



KEY PLAN



FLOOR PLAN 1. All dimensions are in imperial and metric, and measured from finish to finish excluding construction tolerances. 2. All materials, dimensions, and drawings are approximate only. 3. Information is subject to change without notice, at developer's absolute discretion. 4. Actual area may vary from the stated area. 5. Drawings not to scale. 6. All images used are for illustrative purposes only and do not represent the actual size, features, specifications, fittings, and furnishings. 7. The developer reserves the right to make revisions / alterations, at it's absolute discretion, without any liability whatsoever.

Terra Woods

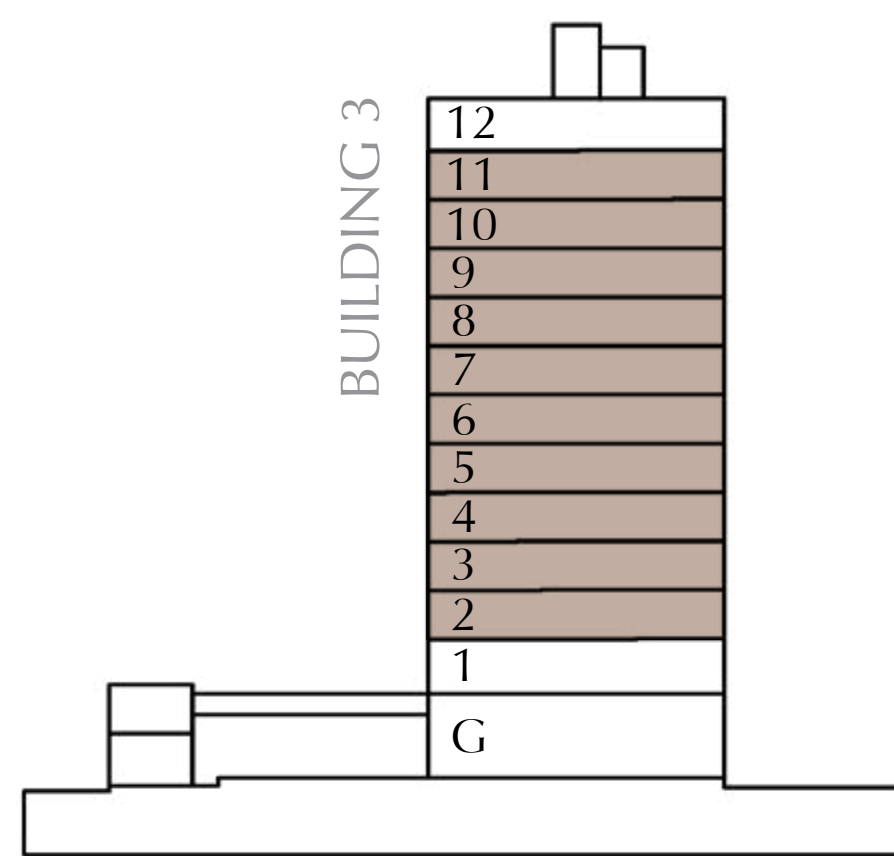
EXPO LIVING

PLOT4-BUILDING 3
2 BEDROOM TYPE-3A

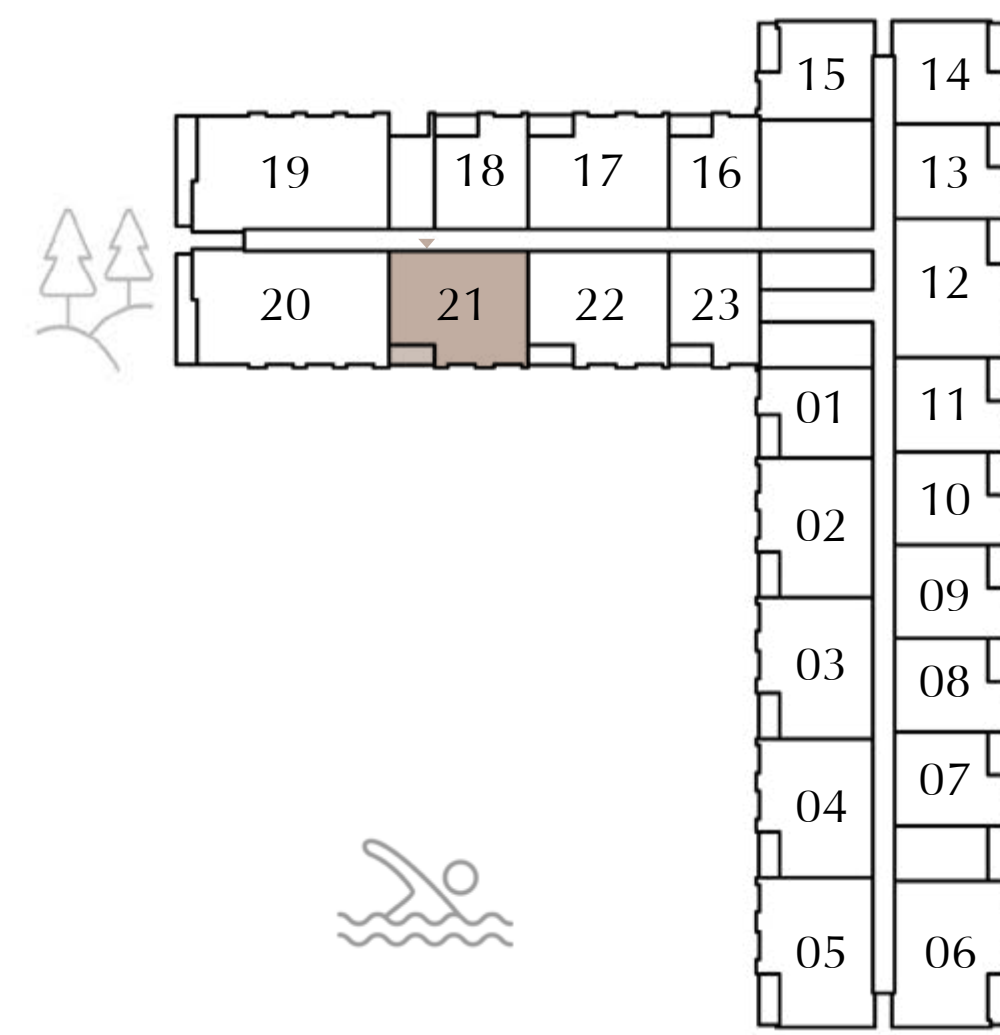
LEVEL 02-11 : UNIT - 21

SUITE AREA	1033.66 SQ.FT.	96.03 SQ.M.
BALCONY AREA	81.05 SQ.FT.	7.53 SQ.M.
<hr/>		
TOTAL AREA	1114.71 SQ.FT.	103.56 SQ.M.

KEY SECTION



KEY PLAN



2ND-11TH FLOOR LEVEL



FLOOR PLAN 1. All dimensions are in imperial and metric, and measured from finish to finish excluding construction tolerances. 2. All materials, dimensions, and drawings are approximate only. 3. Information is subject to change without notice, at developer's absolute discretion. 4. Actual area may vary from the stated area. 5. Drawings not to scale. 6. All images used are for illustrative purposes only and do not represent the actual size, features, specifications, fittings, and furnishings. 7. The developer reserves the right to make revisions / alterations, at it's absolute discretion, without any liability whatsoever.

Terra Woods

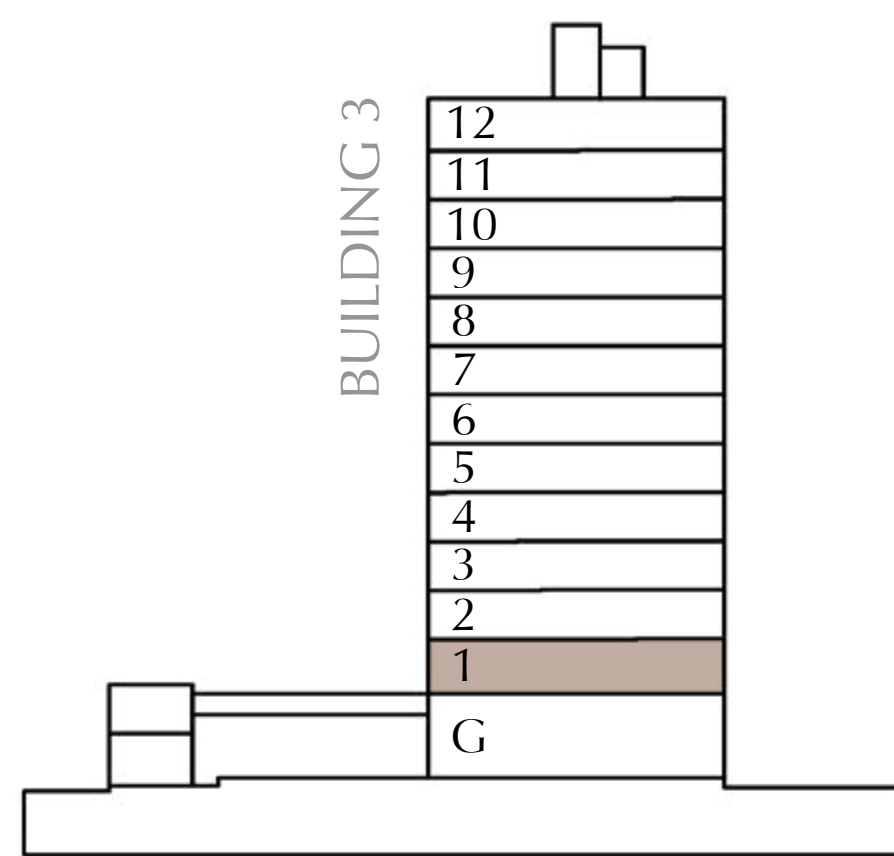
EXPO LIVING

PLOT4-BUILDING 3
2 BEDROOM TYPE-3A.1

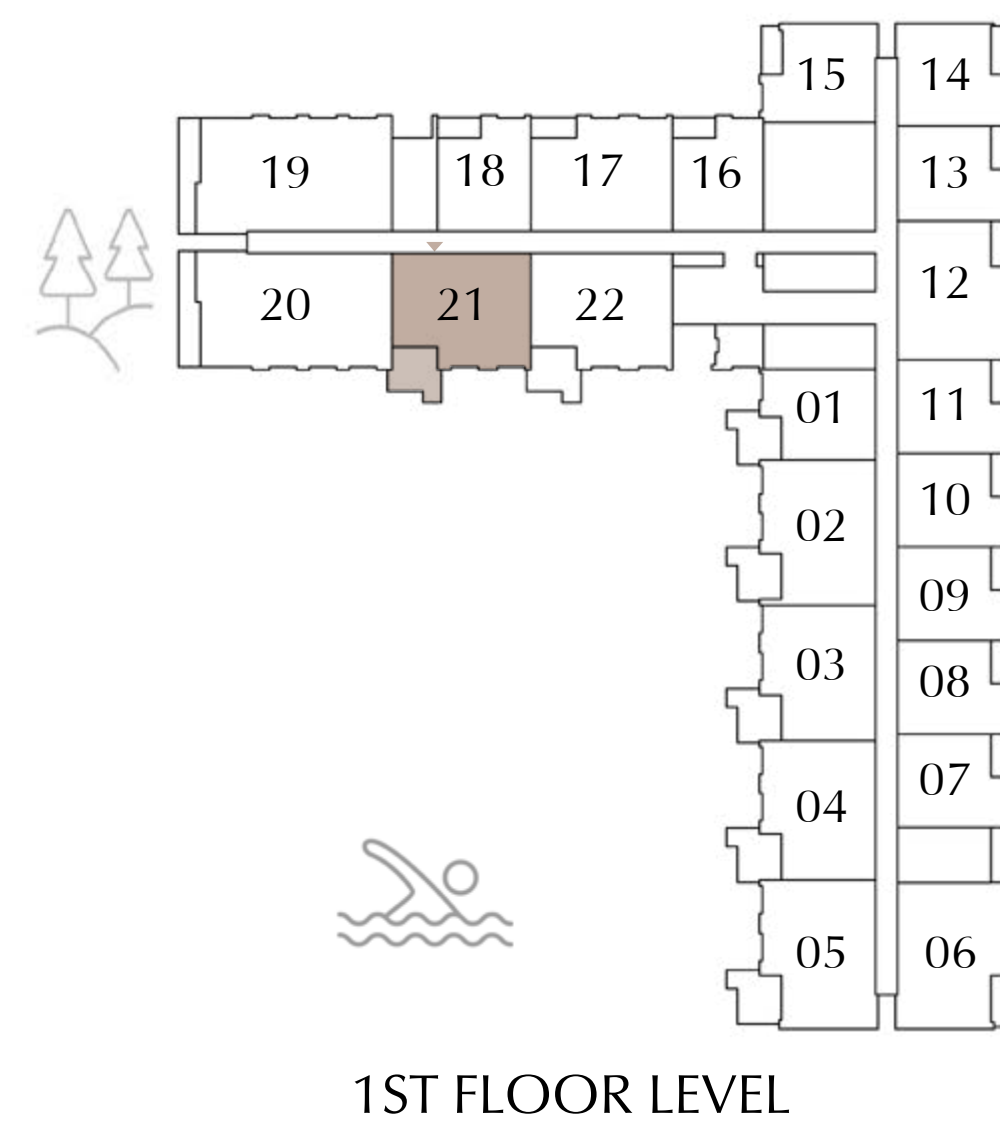
LEVEL 01 : UNIT - 21

SUITE AREA	1032.80 SQ.FT.	95.95 SQ.M.
BALCONY AREA	185.46 SQ.FT.	17.23 SQ.M.
<hr/>		
TOTAL AREA	1218.26 SQ.FT.	113.18 SQ.M.

KEY SECTION



KEY PLAN



FLOOR PLAN 1. All dimensions are in imperial and metric, and measured from finish to finish excluding construction tolerances. 2. All materials, dimensions, and drawings are approximate only. 3. Information is subject to change without notice, at developer’s absolute discretion. 4. Actual area may vary from the stated area. 5. Drawings not to scale. 6. All images used are for illustrative purposes only and do not represent the actual size, features, specifications, fittings, and furnishings. 7. The developer reserves the right to make revisions / alterations, at it’s absolute discretion, without any liability whatsoever.

Terra Woods

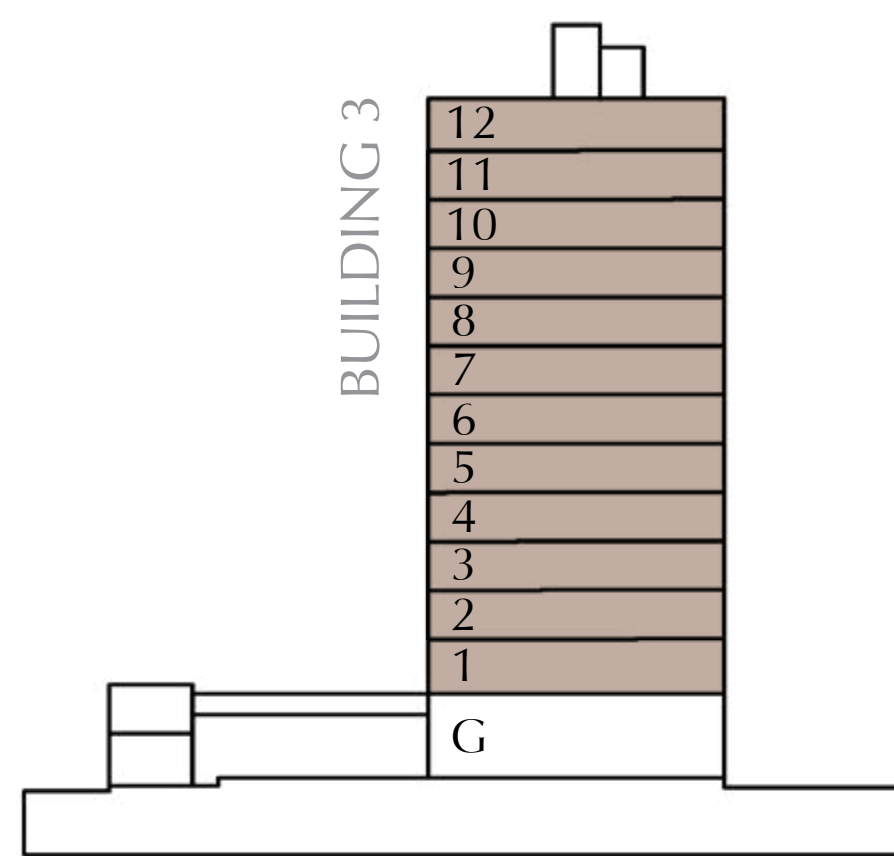
EXPO LIVING

PLOT4-BUILDING 3 2 BEDROOM TYPE-3B

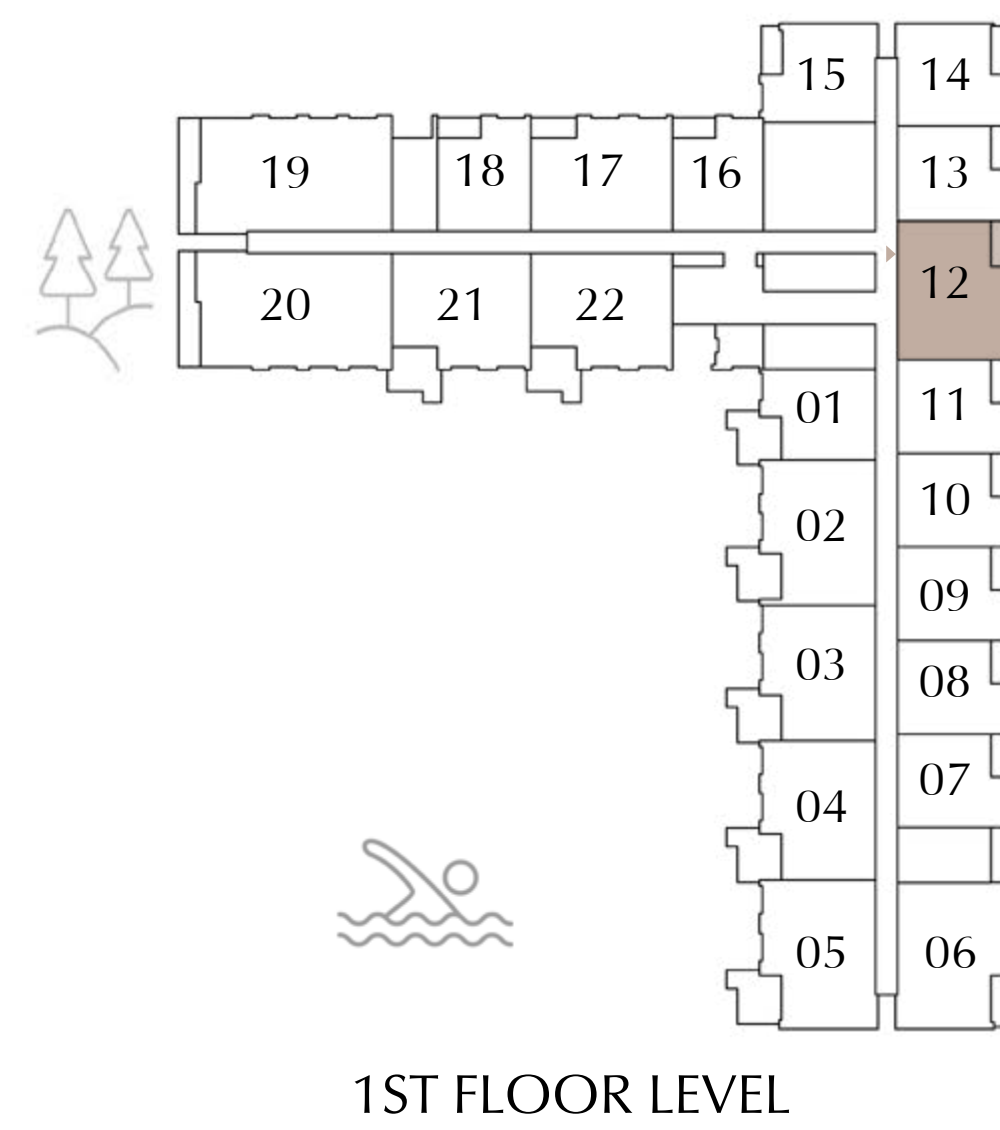
LEVEL 01 : UNIT - 12
LEVEL 02-12 : UNIT - 02, 04 & 12

SUITE AREA	1032.37 SQ.FT.	95.91 SQ.M.
BALCONY AREA	81.05 SQ.FT.	7.53 SQ.M.
<hr/>		
TOTAL AREA	1113.42 SQ.FT.	103.44 SQ.M.

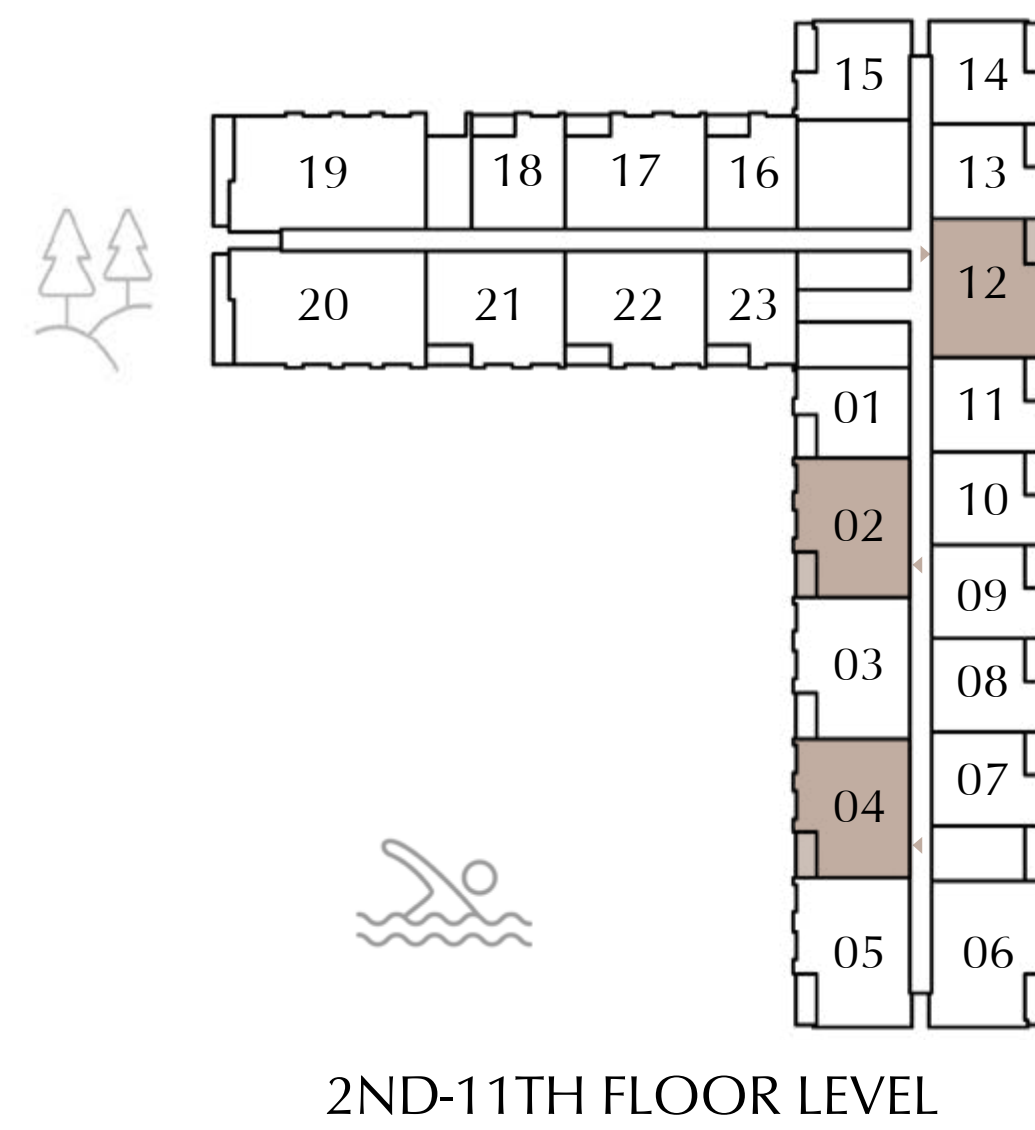
KEY SECTION



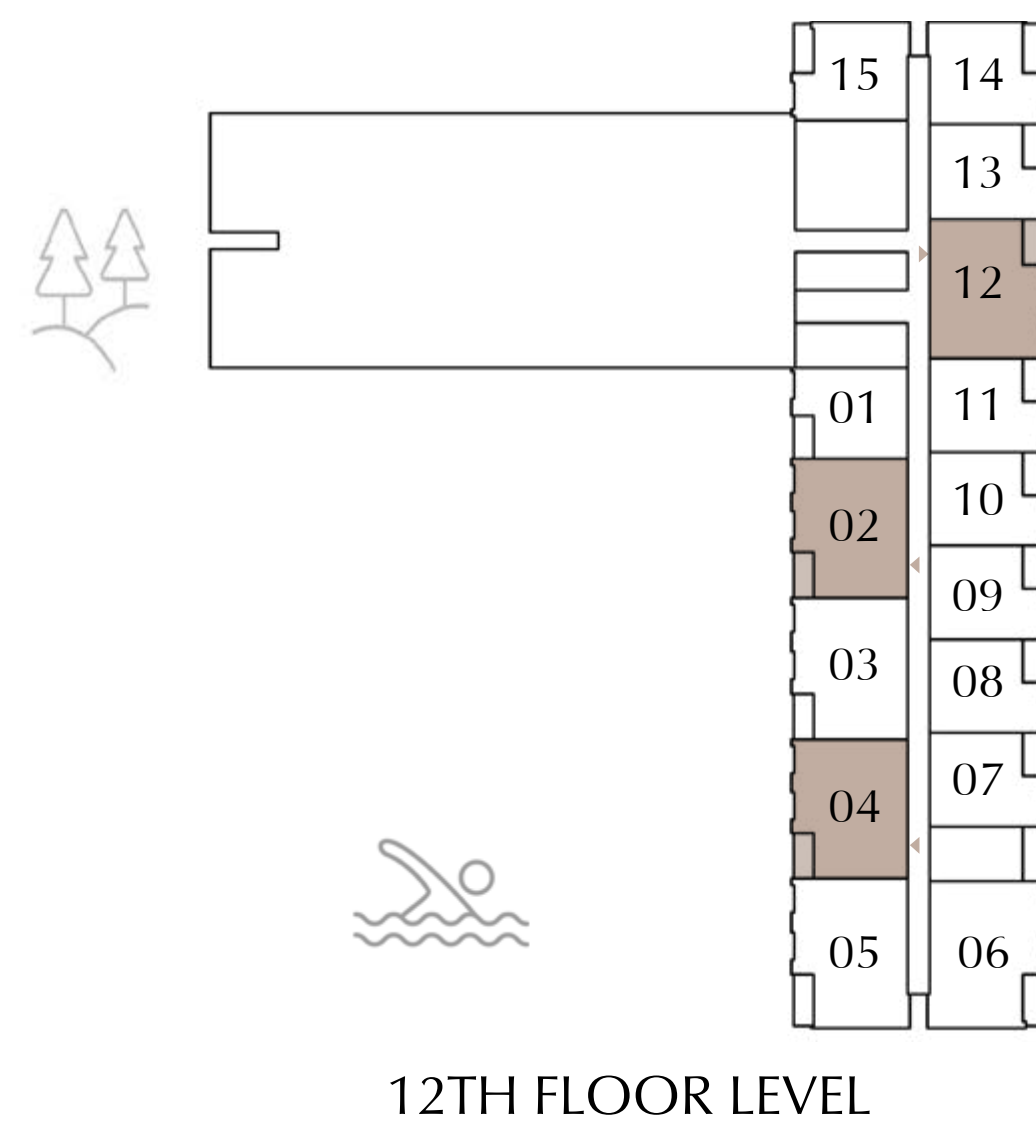
KEY PLAN



1ST FLOOR LEVEL



2ND-11TH FLOOR LEVEL



12TH FLOOR LEVEL



FLOOR PLAN 1. All dimensions are in imperial and metric, and measured from finish to finish excluding construction tolerances. 2. All materials, dimensions, and drawings are approximate only. 3. Information is subject to change without notice, at developer's absolute discretion. 4. Actual area may vary from the stated area. 5. Drawings not to scale. 6. All images used are for illustrative purposes only and do not represent the actual size, features, specifications, fittings, and furnishings. 7. The developer reserves the right to make revisions / alterations, at it's absolute discretion, without any liability whatsoever.

Terra Woods

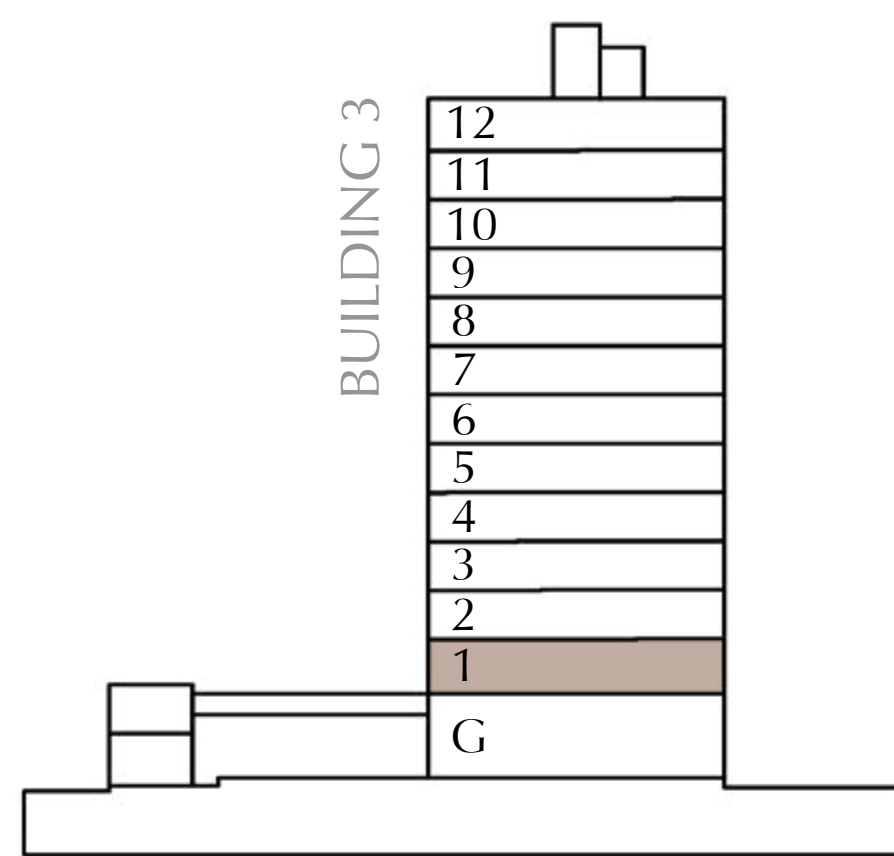
EXPO LIVING

PLOT4-BUILDING 3
2 BEDROOM TYPE-3B.1

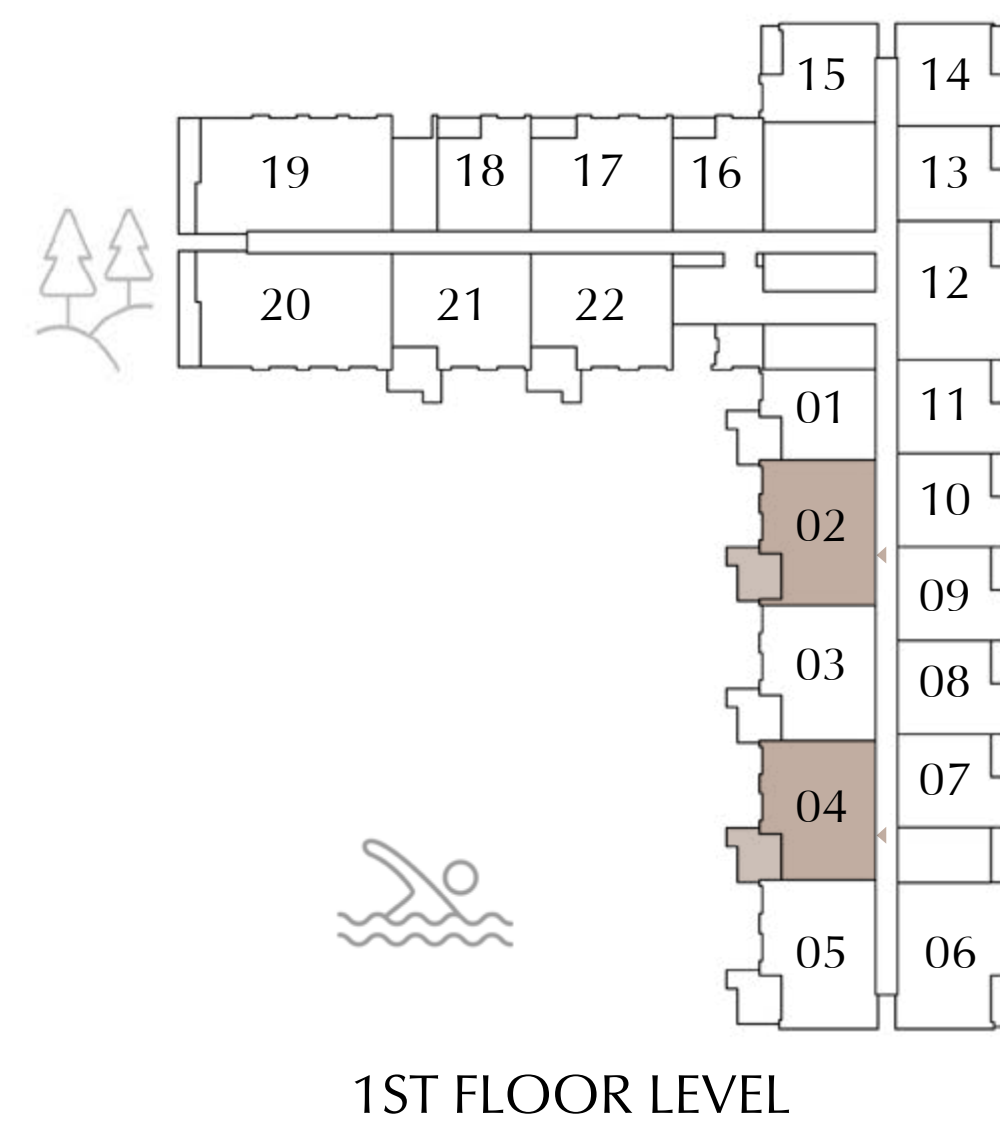
LEVEL 01 : UNIT - 02 & 04

SUITE AREA	1031.72 SQ.FT.	95.85 SQ.M.
BALCONY AREA	185.46 SQ.FT.	17.23 SQ.M.
<hr/>		
TOTAL AREA	1217.18 SQ.FT.	113.08 SQ.M.

KEY SECTION



KEY PLAN



FLOOR PLAN 1. All dimensions are in imperial and metric, and measured from finish to finish excluding construction tolerances. 2. All materials, dimensions, and drawings are approximate only. 3. Information is subject to change without notice, at developer’s absolute discretion. 4. Actual area may vary from the stated area. 5. Drawings not to scale. 6. All images used are for illustrative purposes only and do not represent the actual size, features, specifications, fittings, and furnishings. 7. The developer reserves the right to make revisions / alterations, at it’s absolute discretion, without any liability whatsoever.

Terra Woods

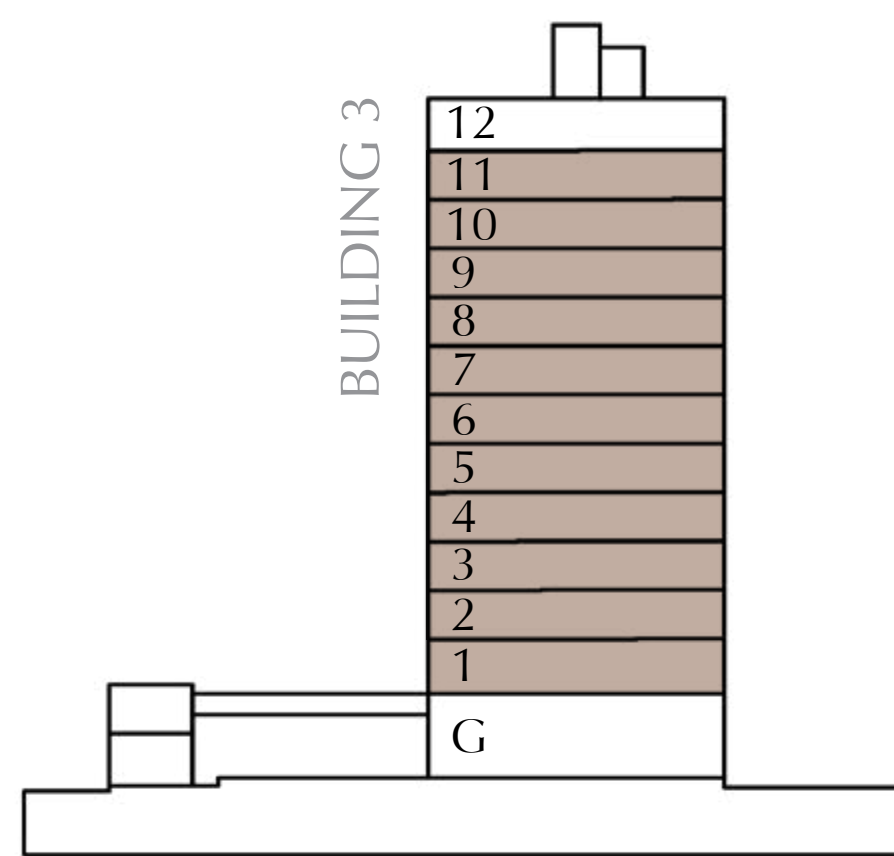
EXPO LIVING

PLOT4-BUILDING 3
3 BEDROOM TYPE-1A

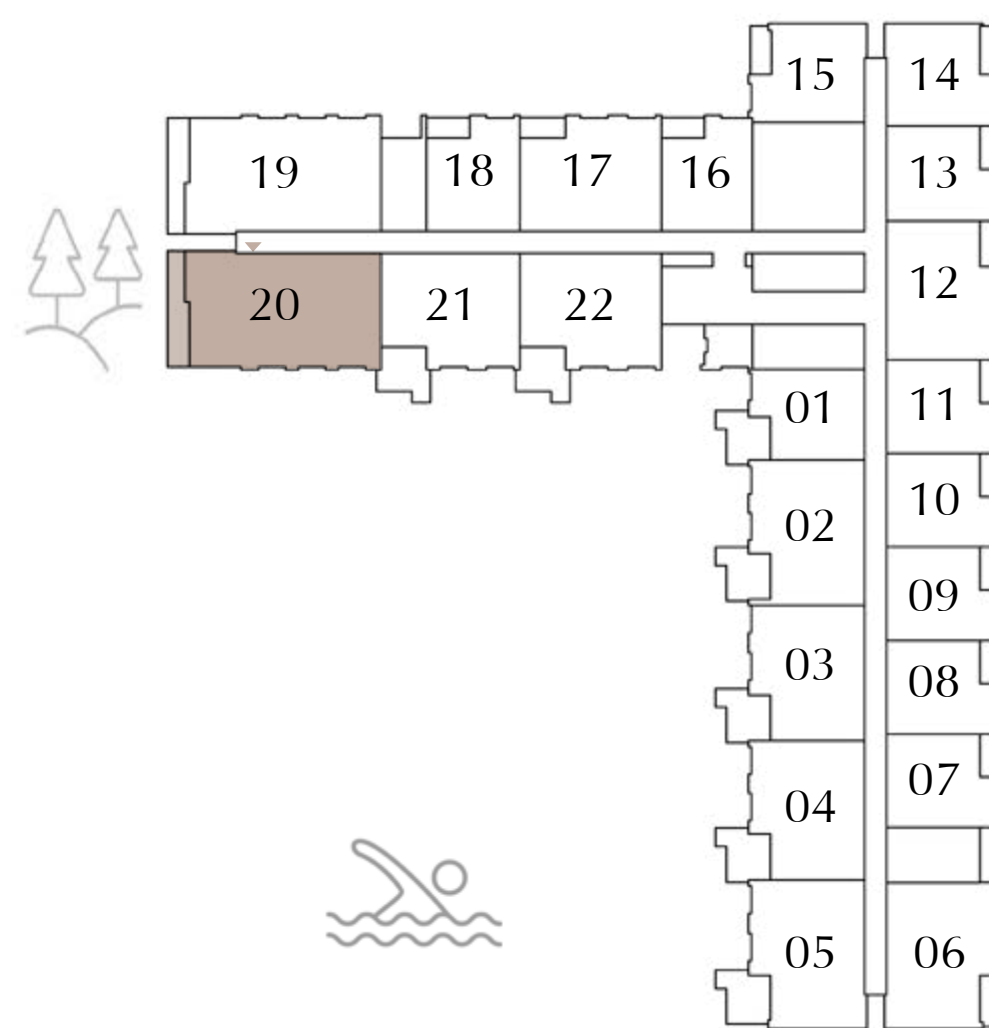
LEVEL 01-11 : UNIT - 20

SUITE AREA	1488.76 SQ.FT.	138.31 SQ.M.
BALCONY AREA	180.30 SQ.FT.	16.75 SQ.M.
<hr/>		
TOTAL AREA	1669.05 SQ.FT.	155.06 SQ.M.

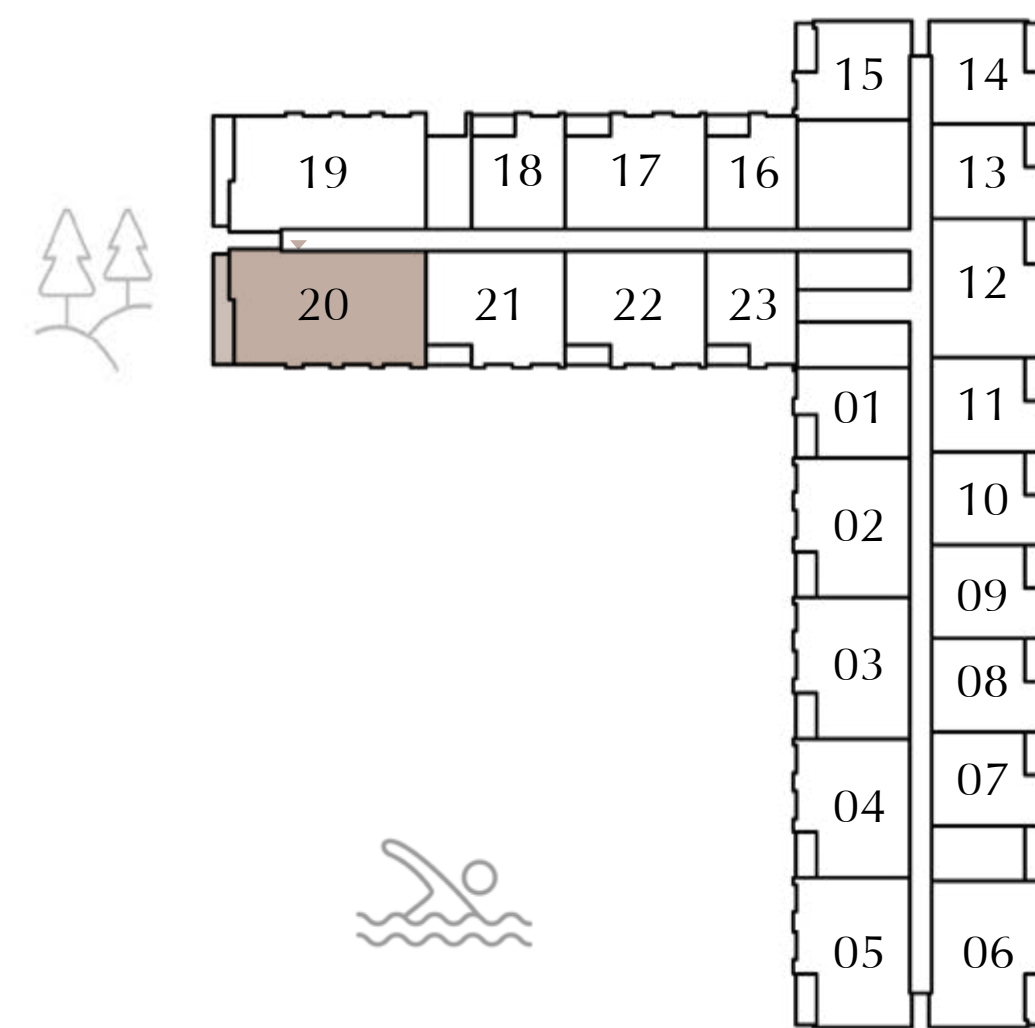
KEY SECTION



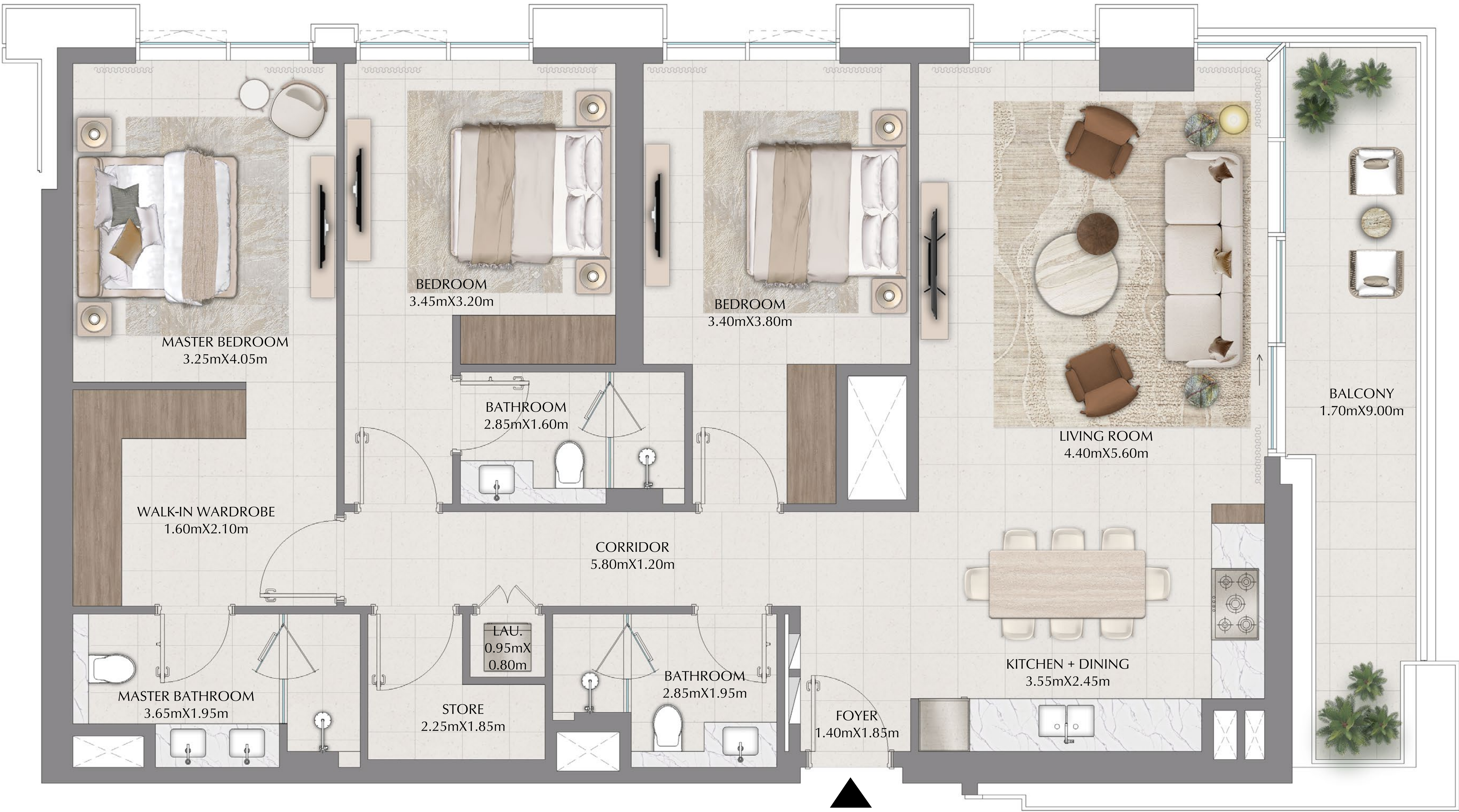
KEY PLAN



1ST FLOOR LEVEL



2ND-11TH FLOOR LEVEL



FLOOR PLAN 1. All dimensions are in imperial and metric, and measured from finish to finish excluding construction tolerances. 2. All materials, dimensions, and drawings are approximate only. 3. Information is subject to change without notice, at developer's absolute discretion. 4. Actual area may vary from the stated area. 5. Drawings not to scale. 6. All images used are for illustrative purposes only and do not represent the actual size, features, specifications, fittings, and furnishings. 7. The developer reserves the right to make revisions / alterations, at it's absolute discretion, without any liability whatsoever.

Terra Woods

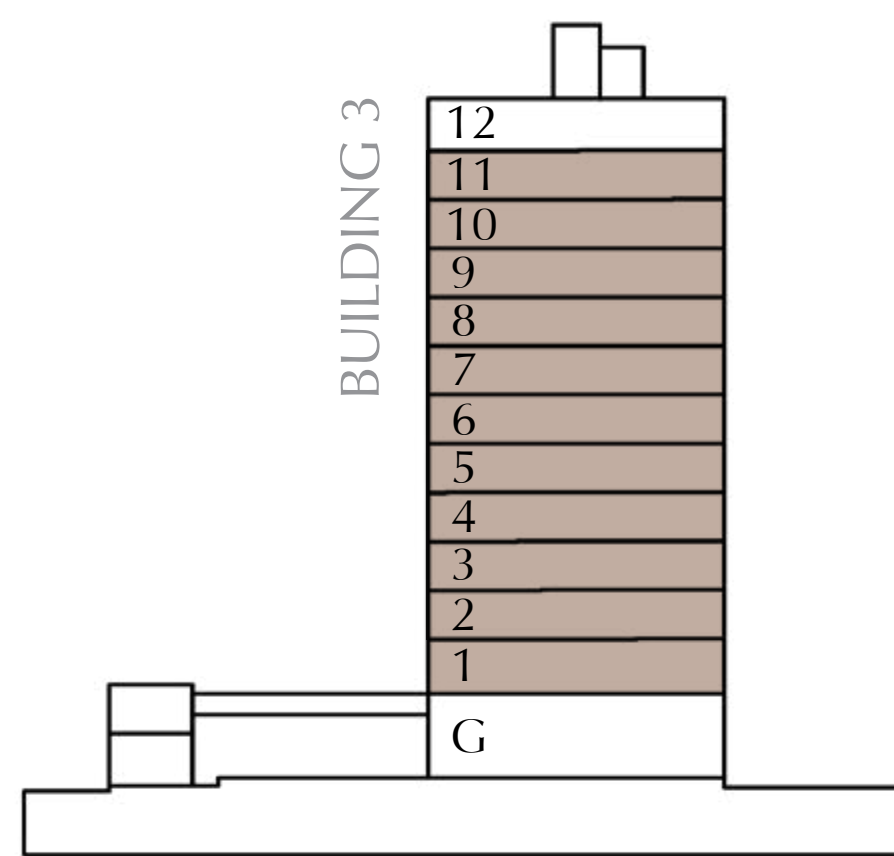
EXPO LIVING

PLOT4-BUILDING 3 3 BEDROOM TYPE-1B

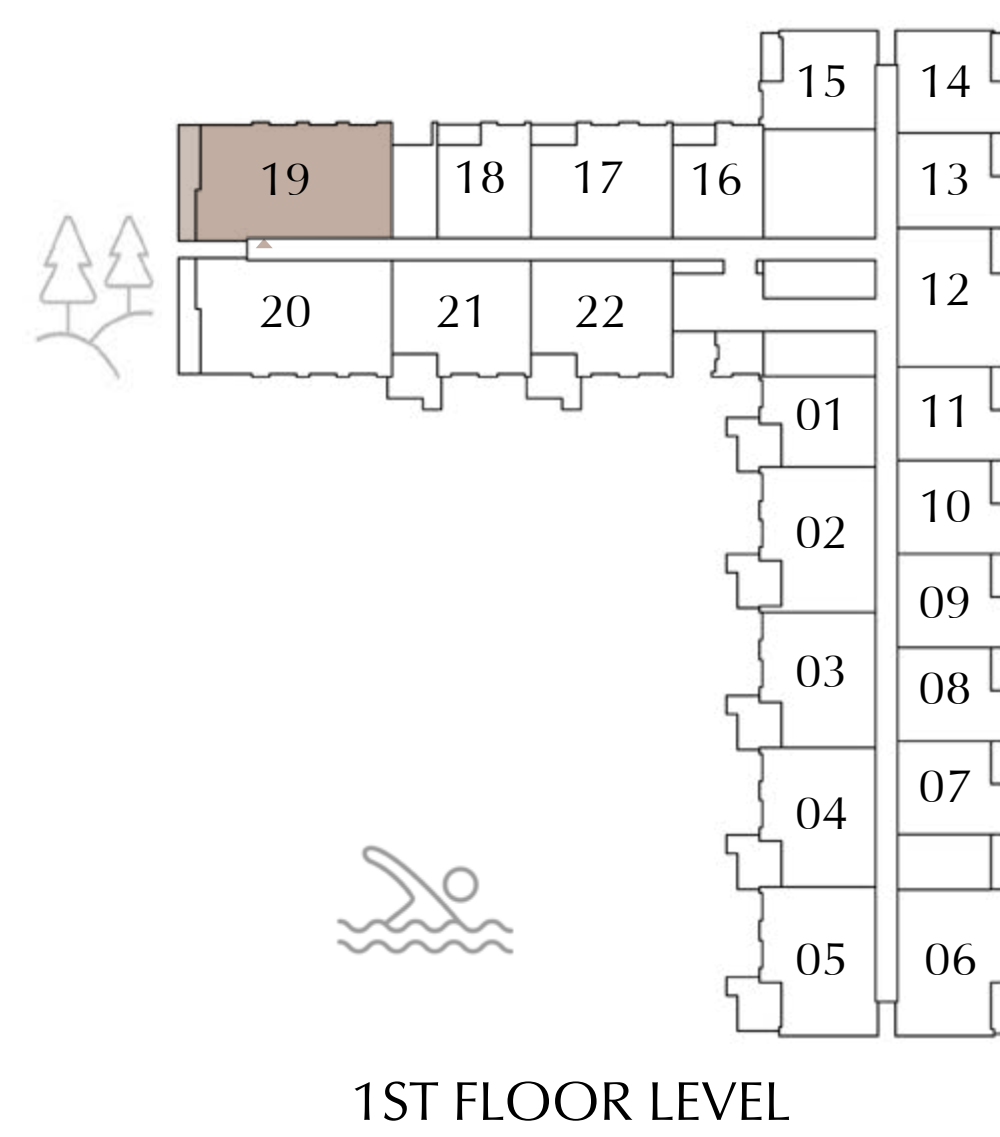
LEVEL 01-11 : UNIT - 19

SUITE AREA	1497.91 SQ.FT.	139.16SQ.M.
BALCONY AREA	178.14 SQ.FT.	16.55SQ.M.
TOTAL AREA	1676.05 SQ.FT.	155.71 SQ.M.

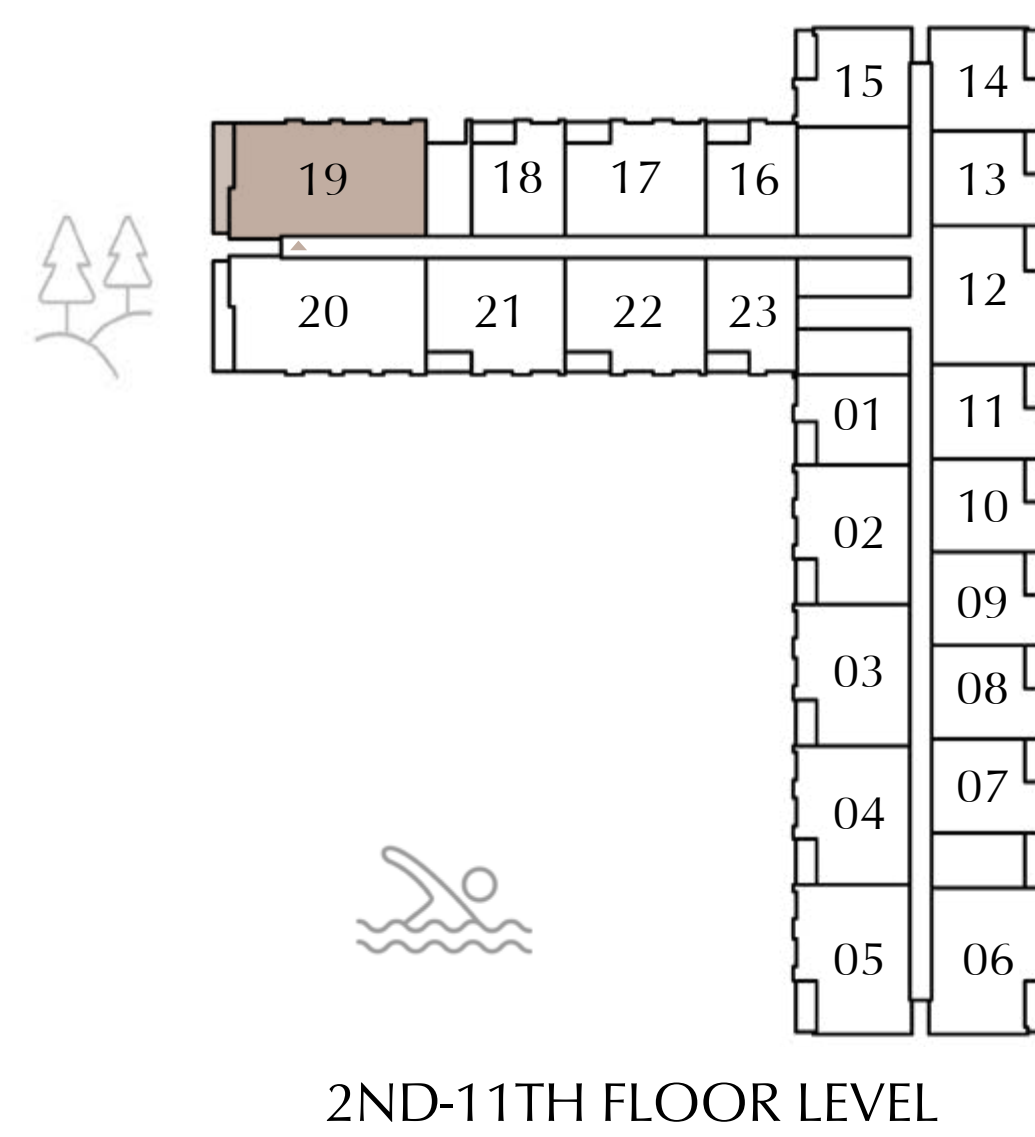
KEY SECTION



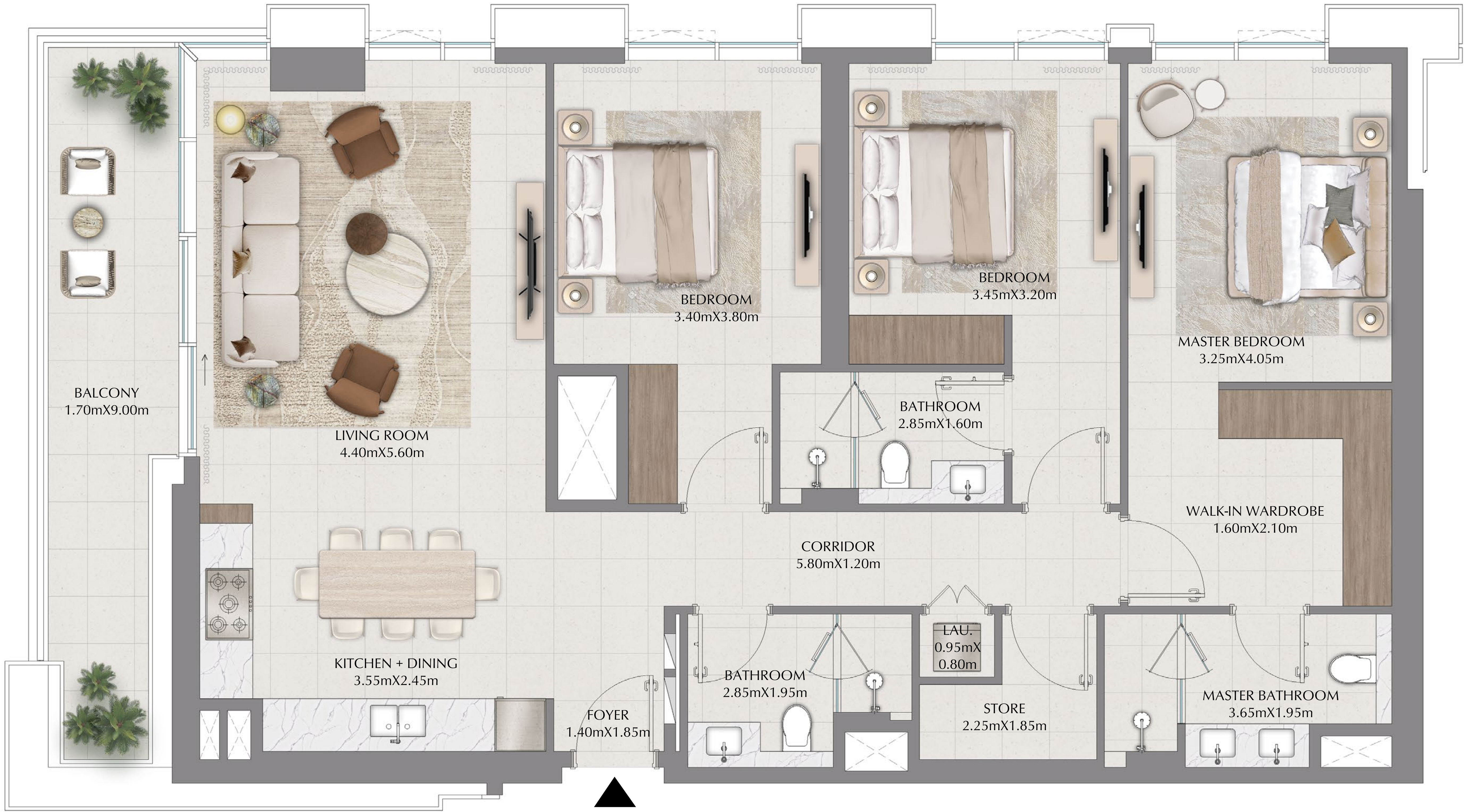
KEY PLAN



1ST FLOOR LEVEL



2ND-11TH FLOOR LEVEL



FLOOR PLAN 1. All dimensions are in imperial and metric, and measured from finish to finish excluding construction tolerances. 2. All materials, dimensions, and drawings are approximate only. 3. Information is subject to change without notice, at developer's absolute discretion. 4. Actual area may vary from the stated area. 5. Drawings not to scale. 6. All images used are for illustrative purposes only and do not represent the actual size, features, specifications, fittings, and furnishings. 7. The developer reserves the right to make revisions / alterations, at it's absolute discretion, without any liability whatsoever.