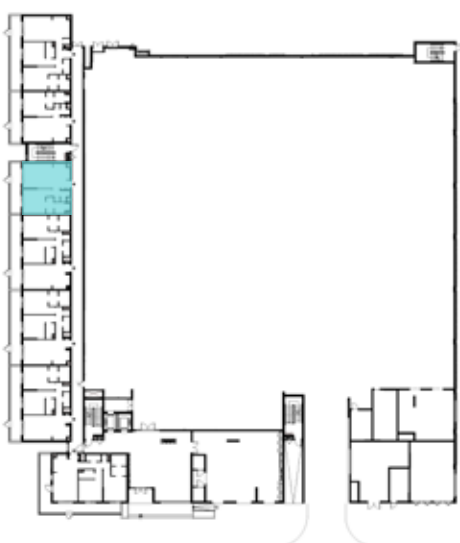
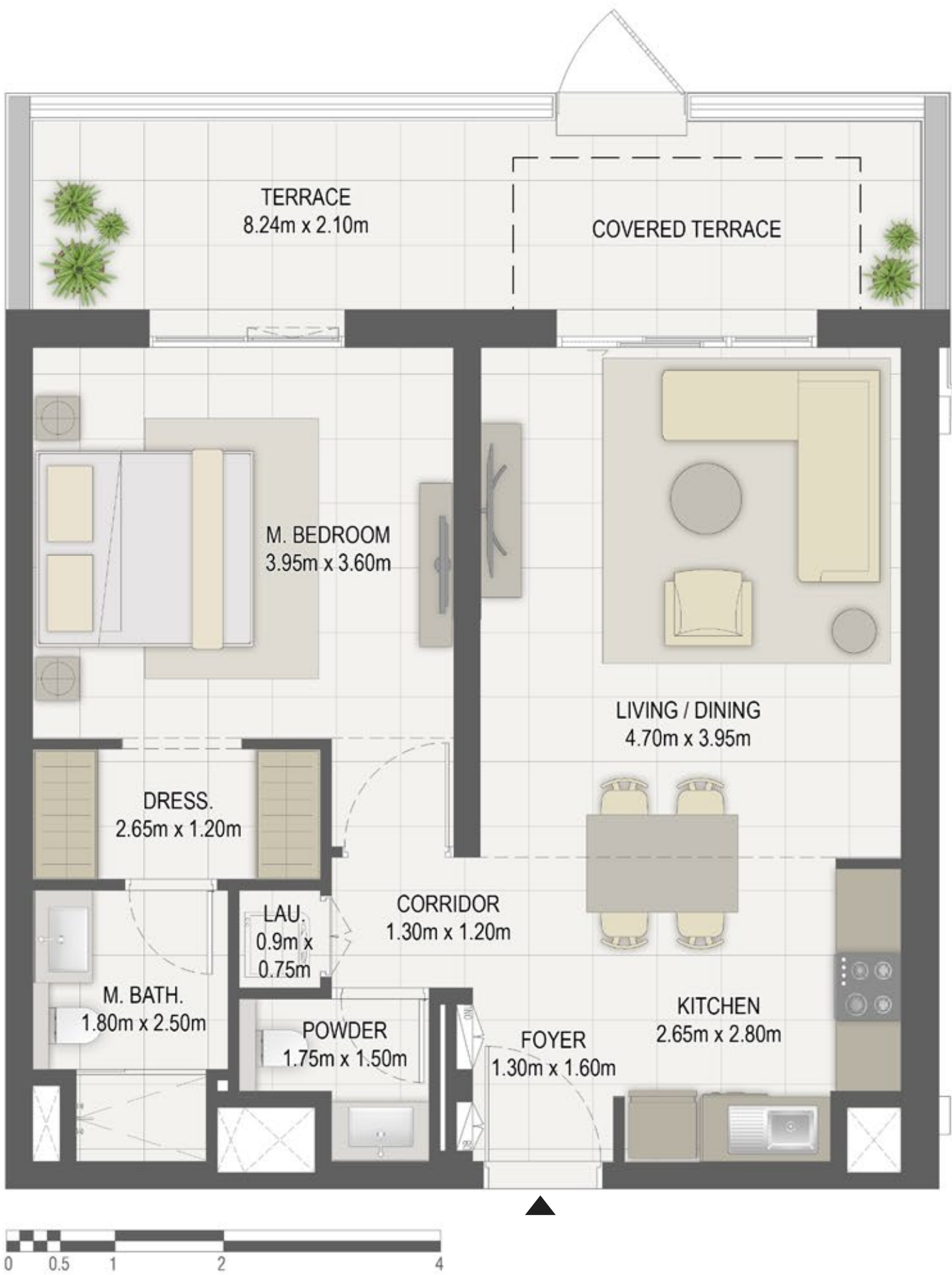




LAYLA RESIDENCES

BUILDING	LAYLA
1 BEDROOM	TYPE 1A
UNIT NO.	003, 215
SUITE AREA	66.11 m ² / 711.60 ft ²
TERRACE AREA	17.63 m ² / 189.76 ft ²
TOTAL AREA	83.74m ² / 901.37 ft ²



LEVEL G



LEVEL 02



Disclaimer:
1.All room dimensions are measured to structural elements and exclude all finishes and construction tolerances. 2. All dimensions have been provided by our consultant architects. 3. All materials, dimensions and drawings are approximate. Information is subject to change without notice. 4. Actual suite area may vary from the stated area. Drawings not to scale. The developer reserves the right to make revisions. 5. Calculation of suite area is measured as the area bounded by the centre line of the demising or partition walls separating one unit from another unit, the exterior face of all exterior walls, and the exterior face of the corridor wall enclosing the adjoining unit. 6. Calculation of balcony area is measured as the area bounded by the centre line of the demising or partition walls separating one unit from another unit, the outmost face of the enclosing guard and the external face of the unit adjoining the balcony. 7. The units are measured at typical floor in the building. Columns may vary in size depending on the floor level.



LAYLA RESIDENCES

BUILDING	LAYLA
1 BEDROOM	TYPE 1A-1
UNIT NO.	103,204,304,404, 504,604,704
SUITE AREA	66.10 m ² / 711.50 ft ²
BALCONY AREA	4.80m ² / 51.67 ft ²
TOTAL AREA	70.90m ² / 763.16 ft ²



LEVEL 01



LEVEL 02



LEVEL 03,04,05,06



LEVEL 07



EAGLE
HILLS
ABU DHABI



جزيرة مريم
MARYAM ISLAND
SHARJAH

Disclaimer:

1.All room dimensions are measured to structural elements and exclude all finishes and construction tolerances. 2. All dimensions have been provided by our consultant architects. 3. All materials, dimensions and drawings are approximate. Information is subject to change without notice. 4. Actual suite area may vary from the stated area. Drawings not to scale. The developer reserves the right to make revisions. 5. Calculation of suite area is measured as the area bounded by the centre line of the demising or partition walls separating one unit from another unit, the exterior face of all exterior walls, and the exterior face of the corridor wall enclosing the adjoining unit. 6. Calculation of balcony area is measured as the area bounded by the centre line of the demising or partition walls separating one unit from another unit, the outmost face of the enclosing guard and the external face of the unit adjoining the balcony. 7. The units are measured at typical floor in the building. Columns may vary in size depending on the floor level.



LAYLA RESIDENCES

BUILDING	LAYLA
1 BEDROOM	TYPE 1A-2
UNIT NO.	108, 109, 110, 111, 212, 213, 214, 216, 308, 312, 314, 315, 317, 408, 412, 414, 415, 417, 508, 512, 514, 515, 517, 608, 612, 614, 615, 617 708, 713, 714, 716
SUITE AREA	65.58 m ² / 705.90 ft ²
BALCONY AREA	4.80m ² / 51.67 ft ²
TOTAL AREA	70.38m ² / 757.56 ft ²



LEVEL 01



LEVEL 02



LEVEL 03,04,05,06



LEVEL 07

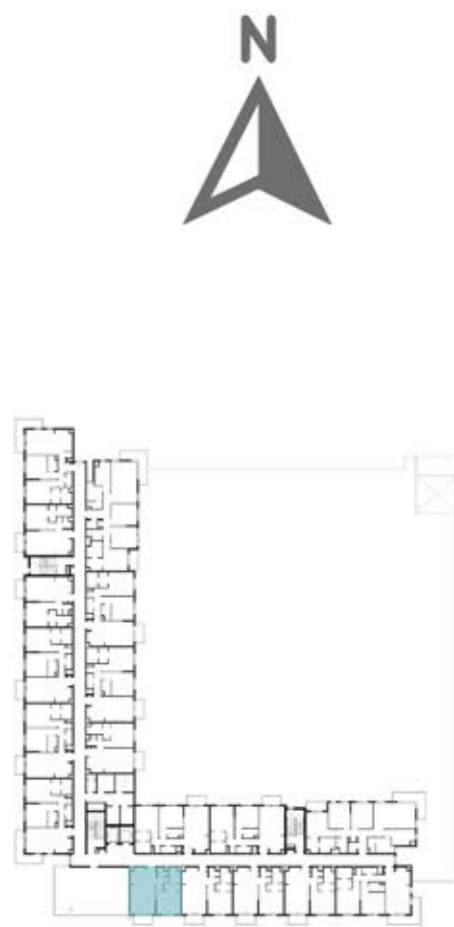
Disclaimer:
1. All room dimensions are measured to structural elements and exclude all finishes and construction tolerances. 2. All dimensions have been provided by our consultant architects. 3. All materials, dimensions and drawings are approximate. Information is subject to change without notice. 4. Actual suite area may vary from the stated area. Drawings not to scale. The developer reserves the right to make revisions. 5. Calculation of suite area is measured as the area bounded by the centre line of the demising or partition walls separating one unit from another unit, the exterior face of all exterior walls, and the exterior face of the corridor wall enclosing the adjoining unit. 6. Calculation of balcony area is measured as the area bounded by the centre line of the demising or partition walls separating one unit from another unit, the outmost face of the enclosing guard and the external face of the unit adjoining the balcony. 7. The units are measured at typical floor in the building. Columns may vary in size depending on the floor level.





LAYLA RESIDENCES

BUILDING	LAYLA
1 BEDROOM	TYPE 1A-4
UNIT NO.	711
SUITE AREA	66.54 m ² / 716.23 ft ²
BALCONY AREA	4.80m ² / 51.67 ft ²
TOTAL AREA	71.34 m ² / 767.90 ft ²



LEVEL 07

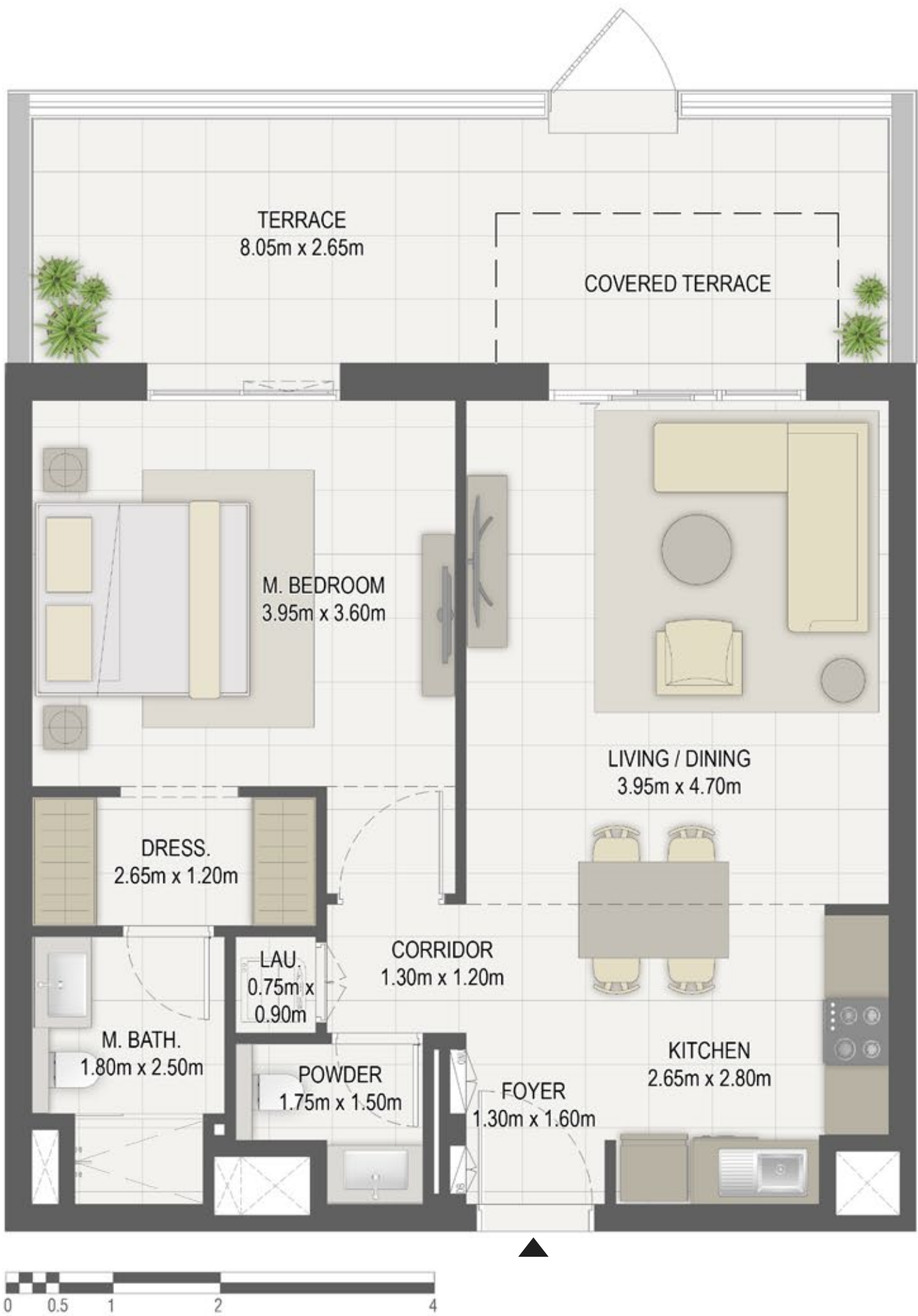


Disclaimer:
1. All room dimensions are measured to structural elements and exclude all finishes and construction tolerances. 2. All dimensions have been provided by our consultant architects. 3. All materials, dimensions and drawings are approximate. Information is subject to change without notice. 4. Actual suite area may vary from the stated area. Drawings not to scale. The developer reserves the right to make revisions. 5. Calculation of suite area is measured as the area bounded by the centre line of the demising or partition walls separating one unit from another unit, the exterior face of all exterior walls, and the exterior face of the corridor wall enclosing the adjoining unit. 6. Calculation of balcony area is measured as the area bounded by the centre line of the demising or partition walls separating one unit from another unit, the outmost face of the enclosing guard and the external face of the unit adjoining the balcony. 7. The units are measured at typical floor in the building. Columns may vary in size depending on the floor level.



LAYLA RESIDENCES

BUILDING	LAYLA
1 BEDROOM	TYPE 1A-3
UNIT NO.	208
SUITE AREA	66.18 m ² / 712.35 ft ²
TERRACE AREA	21.83 m ² / 234.97 ft ²
TOTAL AREA	88.01 m ² / 947.33 ft ²



LEVEL 02

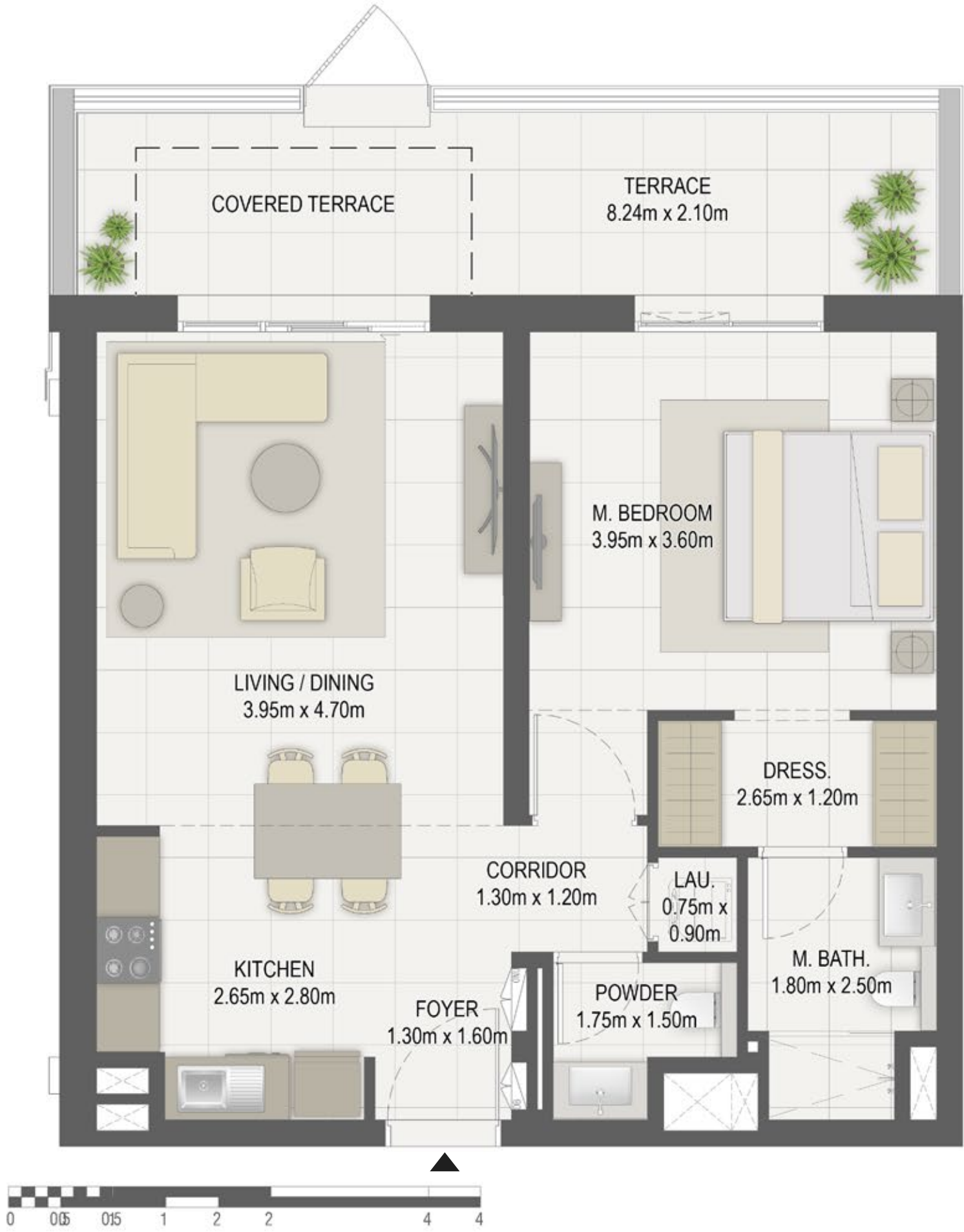


Disclaimer:
1.All room dimensions are measured to structural elements and exclude all finishes and construction tolerances. 2. All dimensions have been provided by our consultant architects. 3. All materials, dimensions and drawings are approximate. Information is subject to change without notice. 4. Actual suite area may vary from the stated area. Drawings not to scale. The developer reserves the right to make revisions. 5. Calculation of suite area is measured as the area bounded by the centre line of the demising or partition walls separating one unit from another unit, the exterior face of all exterior walls, and the exterior face of the corridor wall enclosing the adjoining unit. 6. Calculation of balcony area is measured as the area bounded by the centre line of the demising or partition walls separating one unit from another unit, the outmost face of the enclosing guard and the external face of the unit adjoining the balcony. 7. The units are measured at typical floor in the building. Columns may vary in size depending on the floor level.



LAYLA RESIDENCES

BUILDING	LAYLA
1 BEDROOM	TYPE 1A-5
UNIT NO.	002
SUITE AREA	66.11 m ² / 711.60 ft ²
TERRACE AREA	17.63 m ² / 189.76 ft ²
TOTAL AREA	83.74m ² / 901.37 ft ²



LEVEL G



Disclaimer:
1.All room dimensions are measured to structural elements and exclude all finishes and construction tolerances. 2. All dimensions have been provided by our consultant architects. 3. All materials, dimensions and drawings are approximate. Information is subject to change without notice. 4. Actual suite area may vary from the stated area. Drawings not to scale. The developer reserves the right to make revisions. 5. Calculation of suite area is measured as the area bounded by the centre line of the demising or partition walls separating one unit from another unit, the exterior face of all exterior walls, and the exterior face of the corridor wall enclosing the adjoining unit. 6. Calculation of balcony area is measured as the area bounded by the centre line of the demising or partition walls separating one unit from another unit, the outmost face of the enclosing guard and the external face of the unit adjoining the balcony. 7. The units are measured at typical floor in the building. Columns may vary in size depending on the floor level.



LAYLA RESIDENCES

BUILDING	LAYLA
1 BEDROOM	TYPE 1A-6
UNIT NO.	102,203,303,403,503,603,703
SUITE AREA	66.12m ² / 711.71 ft ²
BALCONY AREA	4.80m ² / 51.67 ft ²
TOTAL AREA	70.92 m ² / 763.38 ft ²



LEVEL 01



LEVEL 02



LEVEL 03,04,05,06



LEVEL 07



جزيرة مريم
MARYAM ISLAND
SHARJAH

Disclaimer:
1. All room dimensions are measured to structural elements and exclude all finishes and construction tolerances. 2. All dimensions have been provided by our consultant architects. 3. All materials, dimensions and drawings are approximate. Information is subject to change without notice. 4. Actual suite area may vary from the stated area. Drawings not to scale. The developer reserves the right to make revisions. 5. Calculation of suite area is measured as the area bounded by the centre line of the demising or partition walls separating one unit from another unit, the exterior face of all exterior walls, and the exterior face of the corridor wall enclosing the adjoining unit. 6. Calculation of balcony area is measured as the area bounded by the centre line of the demising or partition walls separating one unit from another unit, the outmost face of the enclosing guard and the external face of the unit adjoining the balcony. 7. The units are measured at typical floor in the building. Columns may vary in size depending on the floor level.



LAYLA RESIDENCES

BUILDING	LAYLA
2 BEDROOM	TYPE 2A
UNIT NO.	004, 005
SUITE AREA	96.19 m ² / 1035.38 ft ²
TERRACE AREA	24.98 m ² / 268.88 ft ²
TOTAL AREA	121.17 m ² / 1,304.26 ft ²



LEVEL G

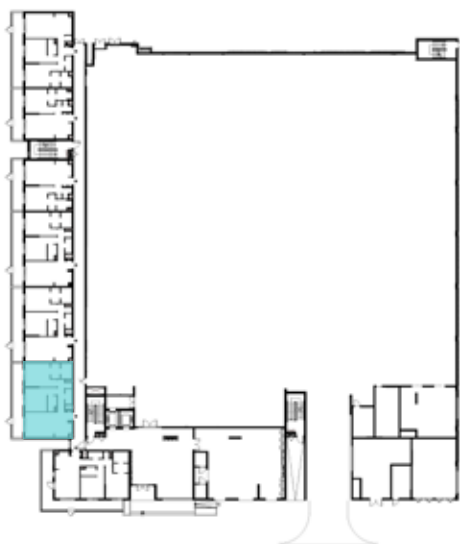


Disclaimer:
1. All room dimensions are measured to structural elements and exclude all finishes and construction tolerances. 2. All dimensions have been provided by our consultant architects. 3. All materials, dimensions and drawings are approximate. Information is subject to change without notice. 4. Actual suite area may vary from the stated area. Drawings not to scale. The developer reserves the right to make revisions. 5. Calculation of suite area is measured as the area bounded by the centre line of the demising or partition walls separating one unit from another unit, the exterior face of all exterior walls, and the exterior face of the corridor wall enclosing the adjoining unit. 6. Calculation of balcony area is measured as the area bounded by the centre line of the demising or partition walls separating one unit from another unit, the outmost face of the enclosing guard and the external face of the unit adjoining the balcony. 7. The units are measured at typical floor in the building. Columns may vary in size depending on the floor level.



LAYLA RESIDENCES

BUILDING	LAYLA
2 BEDROOM	TYPE 2A-1
UNIT NO.	006
SUITE AREA	97.16 m ² / 1045.82 ft ²
TERRACE AREA	25.37 m ² / 273.08 ft ²
TOTAL AREA	122.53 m ² / 1,318.90 ft ²



LEVEL G

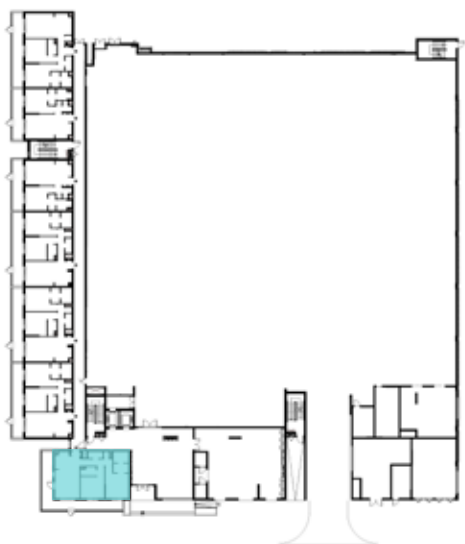


Disclaimer:
1.All room dimensions are measured to structural elements and exclude all finishes and construction tolerances. 2. All dimensions have been provided by our consultant architects. 3. All materials, dimensions and drawings are approximate. Information is subject to change without notice. 4. Actual suite area may vary from the stated area. Drawings not to scale. The developer reserves the right to make revisions. 5. Calculation of suite area is measured as the area bounded by the centre line of the demising or partition walls separating one unit from another unit, the exterior face of all exterior walls, and the exterior face of the corridor wall enclosing the adjoining unit. 6. Calculation of balcony area is measured as the area bounded by the centre line of the demising or partition walls separating one unit from another unit, the outmost face of the enclosing guard and the external face of the unit adjoining the balcony. 7. The units are measured at typical floor in the building. Columns may vary in size depending on the floor level.



LAYLA RESIDENCES

BUILDING	LAYLA
2 BEDROOM	TYPE 2A-2
UNIT NO.	007
SUITE AREA	98.05 m ² / 1055.40 ft ²
TERRACE AREA	41.24 m ² / 443.90 ft ²
TOTAL AREA	139.29 m ² / 1,499.30 ft ²



LEVEL G

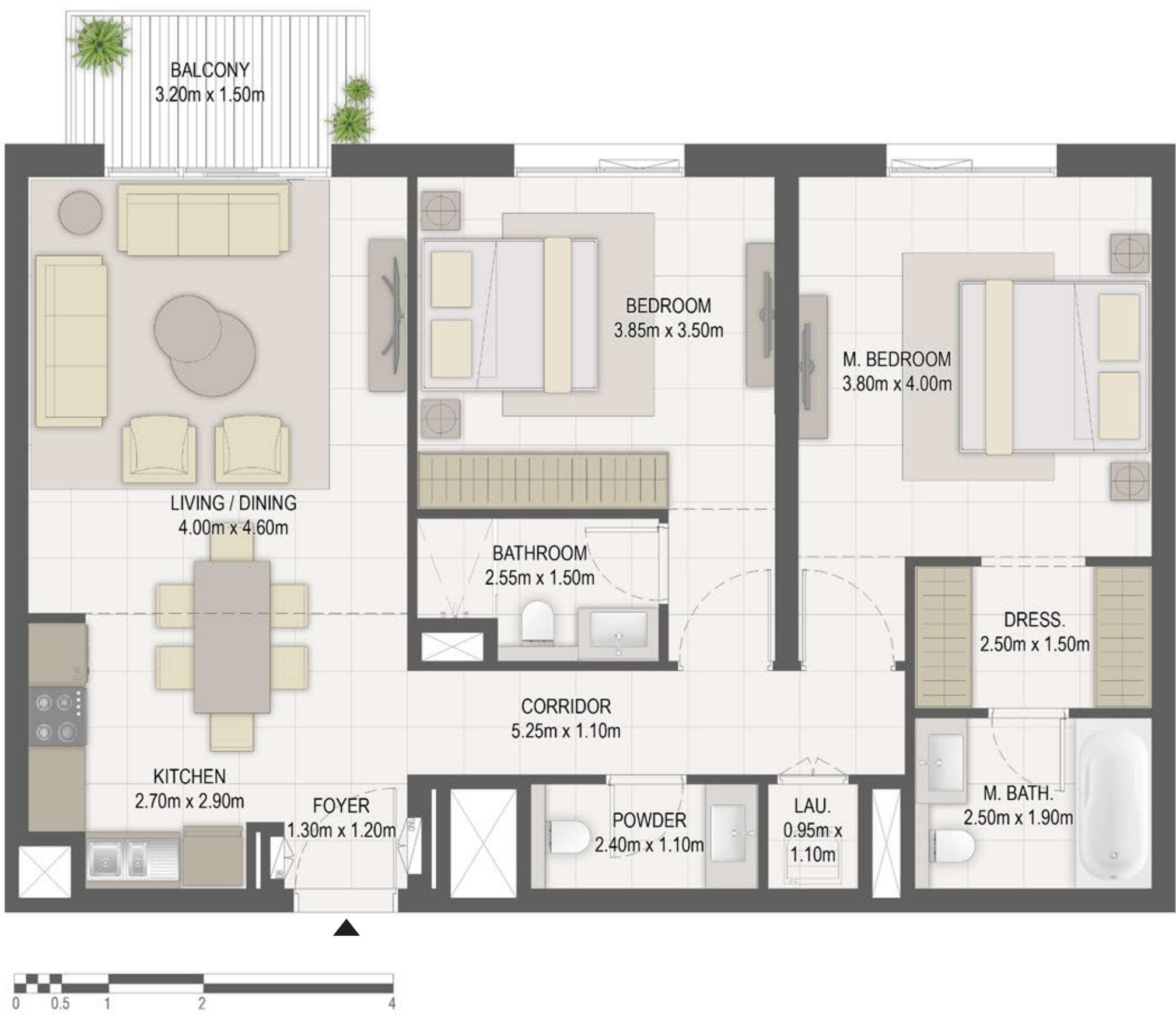


Disclaimer:
1. All room dimensions are measured to structural elements and exclude all finishes and construction tolerances. 2. All dimensions have been provided by our consultant architects. 3. All materials, dimensions and drawings are approximate. Information is subject to change without notice. 4. Actual suite area may vary from the stated area. Drawings not to scale. The developer reserves the right to make revisions. 5. Calculation of suite area is measured as the area bounded by the centre line of the demising or partition walls separating one unit from another unit, the exterior face of all exterior walls, and the exterior face of the corridor wall enclosing the adjoining unit. 6. Calculation of balcony area is measured as the area bounded by the centre line of the demising or partition walls separating one unit from another unit, the outmost face of the enclosing guard and the external face of the unit adjoining the balcony. 7. The units are measured at typical floor in the building. Columns may vary in size depending on the floor level.



LAYLA RESIDENCES

BUILDING	LAYLA
2 BEDROOM	TYPE 2A-3
UNIT NO.	104, 105, 206, 209, 306 309, 406, 409, 506, 509, 606, 609, 706,709
SUITE AREA	96.19 m ² / 1035.38 ft ²
BALCONY AREA	4.80m ² / 51.67 ft ²
TOTAL AREA	100.99 m ² / 1087.05 ft ²



LEVEL 01



LEVEL 02



LEVEL 03,04,05,06



LEVEL 07



EAGLE
HILLS
ABU DHABI



جزيرة مريم
MARYAM ISLAND
SHARJAH

Disclaimer:
1.All room dimensions are measured to structural elements and exclude all finishes and construction tolerances. 2. All dimensions have been provided by our consultant architects. 3. All materials, dimensions and drawings are approximate. Information is subject to change without notice. 4. Actual suite area may vary from the stated area. Drawings not to scale. The developer reserves the right to make revisions. 5. Calculation of suite area is measured as the area bounded by the centre line of the demising or partition walls separating one unit from another unit, the exterior face of all exterior walls, and the exterior face of the corridor wall enclosing the adjoining unit. 6. Calculation of balcony area is measured as the area bounded by the centre line of the demising or partition walls separating one unit from another unit, the outmost face of the enclosing guard and the external face of the unit adjoining the balcony. 7. The units are measured at typical floor in the building. Columns may vary in size depending on the floor level.



LAYLA RESIDENCES

BUILDING	LAYLA
2 BEDROOM	TYPE 2A-4
UNIT NO.	106,112,210,310,410 510, 610,710
SUITE AREA	97.16 m ² / 1045.82 ft ²
BALCONY AREA	12.75 m ² / 137.24 ft ²
TOTAL AREA	109.91 m ² / 1183.06 ft ²



LEVEL 01



LEVEL 02



LEVEL 03,04,05,06



LEVEL 07



EAGLE
HILLS
ABU DHABI



جزيرة مريم
MARYAM ISLAND
SHARJAH

Disclaimer:
1. All room dimensions are measured to structural elements and exclude all finishes and construction tolerances. 2. All dimensions have been provided by our consultant architects. 3. All materials, dimensions and drawings are approximate. Information is subject to change without notice. 4. Actual suite area may vary from the stated area. Drawings not to scale. The developer reserves the right to make revisions. 5. Calculation of suite area is measured as the area bounded by the centre line of the demising or partition walls separating one unit from another unit, the exterior face of all exterior walls, and the exterior face of the corridor wall enclosing the adjoining unit. 6. Calculation of balcony area is measured as the area bounded by the centre line of the demising or partition walls separating one unit from another unit, the outmost face of the enclosing guard and the external face of the unit adjoining the balcony. 7. The units are measured at typical floor in the building. Columns may vary in size depending on the floor level.



LAYLA RESIDENCES

BUILDING	LAYLA
2 BEDROOM	TYPE 2A-5
UNIT NO.	107,211,311,411,511,611
SUITE AREA	97.29 m ² / 1047.22 ft ²
BALCONY AREA	12.75 m ² / 137.24 ft ²
TOTAL AREA	110.04 m ² / 1184.46 ft ²



LEVEL 01



LEVEL 02



LEVEL 03,04,05,06



Disclaimer:
1. All room dimensions are measured to structural elements and exclude all finishes and construction tolerances. 2. All dimensions have been provided by our consultant architects. 3. All materials, dimensions and drawings are approximate. Information is subject to change without notice. 4. Actual suite area may vary from the stated area. Drawings not to scale. The developer reserves the right to make revisions. 5. Calculation of suite area is measured as the area bounded by the centre line of the demising or partition walls separating one unit from another unit, the exterior face of all exterior walls, and the exterior face of the corridor wall enclosing the adjoining unit. 6. Calculation of balcony area is measured as the area bounded by the centre line of the demising or partition walls separating one unit from another unit, the outmost face of the enclosing guard and the external face of the unit adjoining the balcony. 7. The units are measured at typical floor in the building. Columns may vary in size depending on the floor level.



LAYLA RESIDENCES

BUILDING	LAYLA
2 BEDROOM	TYPE 2A-6
UNIT NO.	205,207
SUITE AREA	96.35 m ² / 1037.10 ft ²
TERRACE AREA	31.90 m ² / 343.37 ft ²
TOTAL AREA	128.25 m ² / 1,380.47ft ²



LEVEL 02



Disclaimer:
1.All room dimensions are measured to structural elements and exclude all finishes and construction tolerances. 2. All dimensions have been provided by our consultant architects. 3. All materials, dimensions and drawings are approximate. Information is subject to change without notice. 4. Actual suite area may vary from the stated area. Drawings not to scale. The developer reserves the right to make revisions. 5. Calculation of suite area is measured as the area bounded by the centre line of the demising or partition walls separating one unit from another unit, the exterior face of all exterior walls, and the exterior face of the corridor wall enclosing the adjoining unit. 6. Calculation of balcony area is measured as the area bounded by the centre line of the demising or partition walls separating one unit from another unit, the outmost face of the enclosing guard and the external face of the unit adjoining the balcony. 7. The units are measured at typical floor in the building. Columns may vary in size depending on the floor level.



LAYLA RESIDENCES

BUILDING	LAYLA
2 BEDROOM	TYPE 2A-7
UNIT NO.	218,319,419,519,619,718
SUITE AREA	97.22 m ² / 1046.47 ft ²
BALCONY AREA	12.75 m ² / 137.24 ft ²
TOTAL AREA	109.97m ² / 1183.71 ft ²



LEVEL 02



LEVEL 03,04,05,06



LEVEL 07



Disclaimer:
1. All room dimensions are measured to structural elements and exclude all finishes and construction tolerances. 2. All dimensions have been provided by our consultant architects. 3. All materials, dimensions and drawings are approximate. Information is subject to change without notice. 4. Actual suite area may vary from the stated area. Drawings not to scale. The developer reserves the right to make revisions. 5. Calculation of suite area is measured as the area bounded by the centre line of the demising or partition walls separating one unit from another unit, the exterior face of all exterior walls, and the exterior face of the corridor wall enclosing the adjoining unit. 6. Calculation of balcony area is measured as the area bounded by the centre line of the demising or partition walls separating one unit from another unit, the outmost face of the enclosing guard and the external face of the unit adjoining the balcony. 7. The units are measured at typical floor in the building. Columns may vary in size depending on the floor level.



LAYLA RESIDENCES

BUILDING	LAYLA
2 BEDROOM	TYPE 2A-8
UNIT NO.	305,405,505,605,705 307,407,507,607,707
SUITE AREA	96.35 m ² / 1037.10 ft ²
BALCONY AREA	4.80 m ² / 51.67 ft ²
TOTAL AREA	101.15 m ² / 1088.77 ft ²



LEVEL 03,04,05,06



LEVEL 07

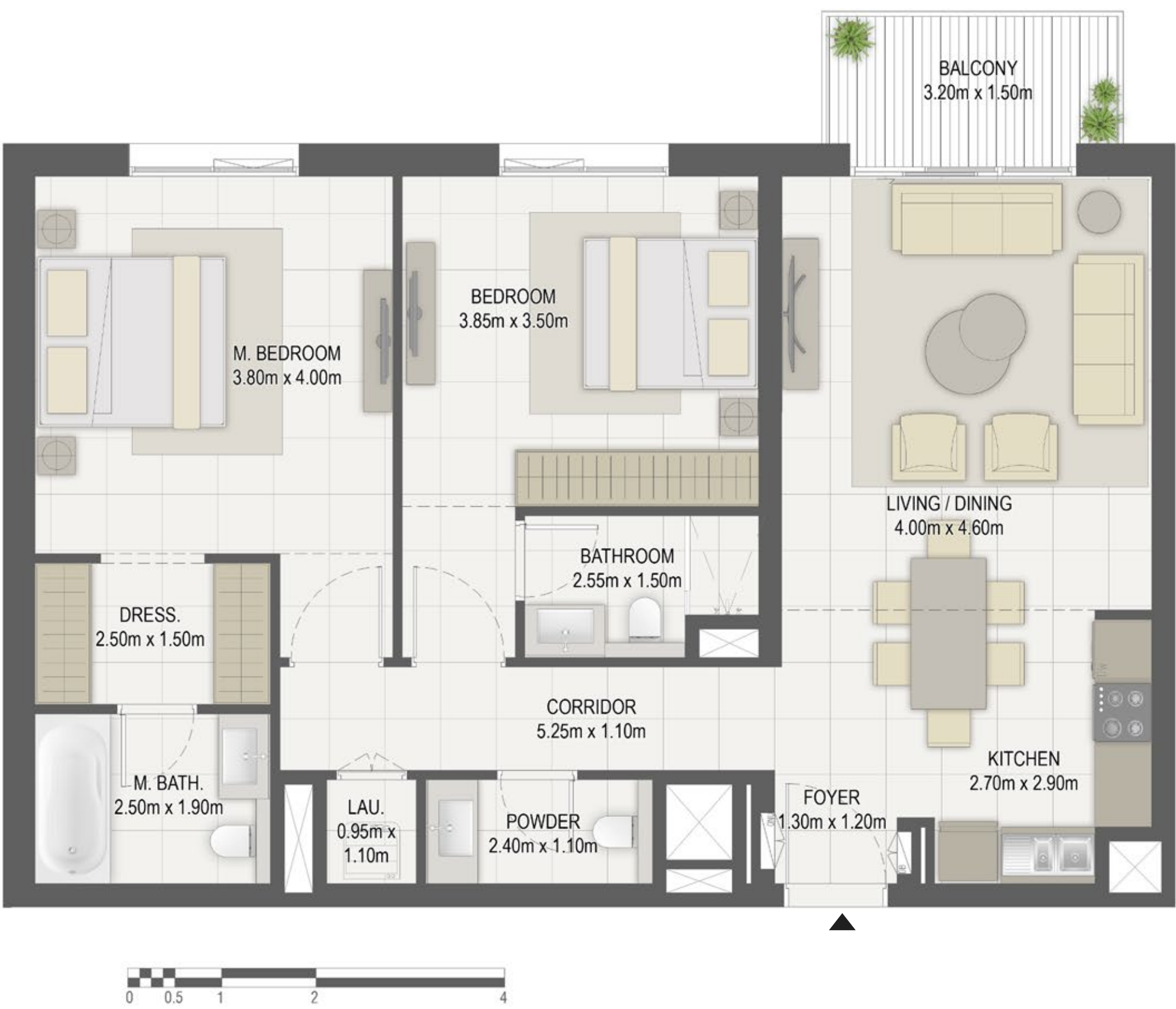


Disclaimer:
1.All room dimensions are measured to structural elements and exclude all finishes and construction tolerances. 2. All dimensions have been provided by our consultant architects. 3. All materials, dimensions and drawings are approximate. Information is subject to change without notice. 4. Actual suite area may vary from the stated area. Drawings not to scale. The developer reserves the right to make revisions. 5. Calculation of suite area is measured as the area bounded by the centre line of the demising or partition walls separating one unit from another unit, the exterior face of all exterior walls, and the exterior face of the corridor wall enclosing the adjoining unit. 6. Calculation of balcony area is measured as the area bounded by the centre line of the demising or partition walls separating one unit from another unit, the outmost face of the enclosing guard and the external face of the unit adjoining the balcony. 7. The units are measured at typical floor in the building. Columns may vary in size depending on the floor level.



LAYLA RESIDENCES

BUILDING	LAYLA
2 BEDROOM	TYPE 2A-9
UNIT NO.	313,413,513,613,712
SUITE AREA	96.45 m ² / 1038.18 ft ²
BALCONY AREA	4.80 m ² / 51.67 ft ²
TOTAL AREA	101.25 m ² / 1089.84 ft ²



LEVEL 03,04,05,06



LEVEL 07



Disclaimer:
1.All room dimensions are measured to structural elements and exclude all finishes and construction tolerances. 2. All dimensions have been provided by our consultant architects. 3. All materials, dimensions and drawings are approximate. Information is subject to change without notice. 4. Actual suite area may vary from the stated area. Drawings not to scale. The developer reserves the right to make revisions. 5. Calculation of suite area is measured as the area bounded by the centre line of the demising or partition walls separating one unit from another unit, the exterior face of all exterior walls, and the exterior face of the corridor wall enclosing the adjoining unit. 6. Calculation of balcony area is measured as the area bounded by the centre line of the demising or partition walls separating one unit from another unit, the outmost face of the enclosing guard and the external face of the unit adjoining the balcony. 7. The units are measured at typical floor in the building. Columns may vary in size depending on the floor level.



LAYLA RESIDENCES

BUILDING	LAYLA
2 BEDROOM	TYPE 2A-10
UNIT NO.	316,416,516,616,715
SUITE AREA	96.89 m ² / 1042.91 ft ²
BALCONY AREA	4.80 m ² / 51.67 ft ²
TOTAL AREA	101.69 m ² / 1094.58 ft ²



LEVEL 03,04,05,06



LEVEL 07

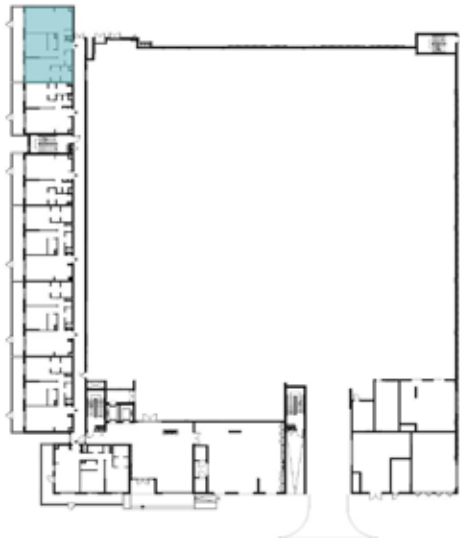
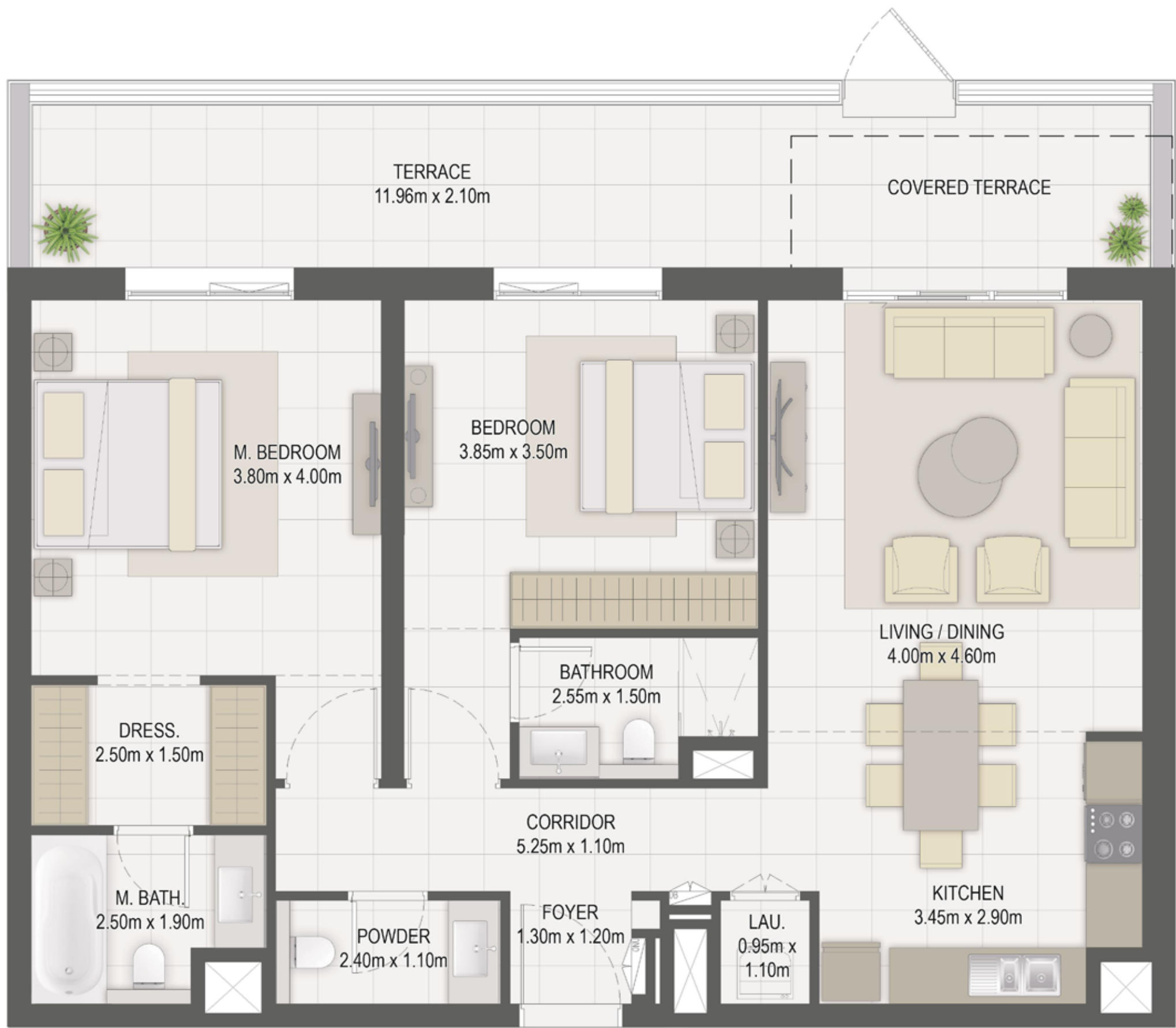


Disclaimer:
1. All room dimensions are measured to structural elements and exclude all finishes and construction tolerances. 2. All dimensions have been provided by our consultant architects. 3. All materials, dimensions and drawings are approximate. Information is subject to change without notice. 4. Actual suite area may vary from the stated area. Drawings not to scale. The developer reserves the right to make revisions. 5. Calculation of suite area is measured as the area bounded by the centre line of the demising or partition walls separating one unit from another unit, the exterior face of all exterior walls, and the exterior face of the corridor wall enclosing the adjoining unit. 6. Calculation of balcony area is measured as the area bounded by the centre line of the demising or partition walls separating one unit from another unit, the outmost face of the enclosing guard and the external face of the unit adjoining the balcony. 7. The units are measured at typical floor in the building. Columns may vary in size depending on the floor level.



LAYLA RESIDENCES

BUILDING	LAYLA
2 BEDROOM	TYPE 2B
UNIT NO.	001
SUITE AREA	97.45 m ² / 1048.94 ft ²
TERRACE AREA	25.37 m ² / 273.08 ft ²
TOTAL AREA	122.82 m ² / 1,322.02 ft ²



LEVEL G



Disclaimer:
1. All room dimensions are measured to structural elements and exclude all finishes and construction tolerances. 2. All dimensions have been provided by our consultant architects. 3. All materials, dimensions and drawings are approximate. Information is subject to change without notice. 4. Actual suite area may vary from the stated area. Drawings not to scale. The developer reserves the right to make revisions. 5. Calculation of suite area is measured as the area bounded by the centre line of the demising or partition walls separating one unit from another unit, the exterior face of all exterior walls, and the exterior face of the corridor wall enclosing the adjoining unit. 6. Calculation of balcony area is measured as the area bounded by the centre line of the demising or partition walls separating one unit from another unit, the outmost face of the enclosing guard and the external face of the unit adjoining the balcony. 7. The units are measured at typical floor in the building. Columns may vary in size depending on the floor level.



LAYLA RESIDENCES

BUILDING	LAYLA
2 BEDROOM	TYPE 2B-1
UNIT NO.	101,201,301,401,501,601,701
SUITE AREA	97.45 m ² / 1048.94 ft ²
BALCONY AREA	12.75 m ² / 137.24 ft ²
TOTAL AREA	110.20 m ² / 1186.18 ft ²



LEVEL 01



LEVEL 02



LEVEL 03,04,05,06



LEVEL 07



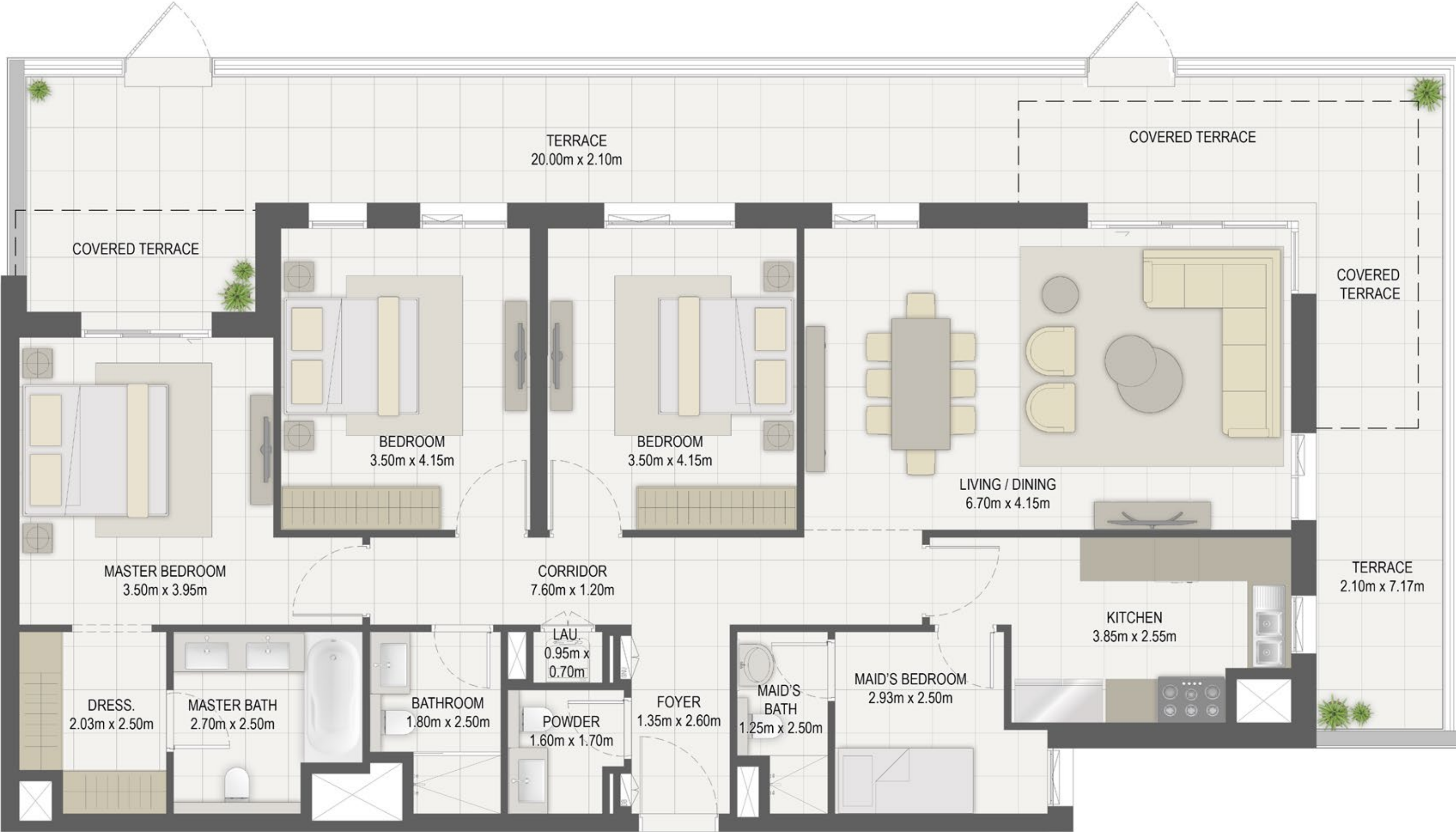
جزيرة مريم
MARYAM ISLAND
SHARJAH

Disclaimer:
1. All room dimensions are measured to structural elements and exclude all finishes and construction tolerances. 2. All dimensions have been provided by our consultant architects. 3. All materials, dimensions and drawings are approximate. Information is subject to change without notice. 4. Actual suite area may vary from the stated area. Drawings not to scale. The developer reserves the right to make revisions. 5. Calculation of suite area is measured as the area bounded by the centre line of the demising or partition walls separating one unit from another unit, the exterior face of all exterior walls, and the exterior face of the corridor wall enclosing the adjoining unit. 6. Calculation of balcony area is measured as the area bounded by the centre line of the demising or partition walls separating one unit from another unit, the outmost face of the enclosing guard and the external face of the unit adjoining the balcony. 7. The units are measured at typical floor in the building. Columns may vary in size depending on the floor level.



LAYLA RESIDENCES

BUILDING	LAYLA
3 BEDROOM	TYPE 3A
UNIT NO.	217
SUITE AREA	143.06 m ² / 1539.88 ft ²
TERRACE AREA	61.56 m ² / 662.63 ft ²
TOTAL AREA	204.62 m ² / 2,202.51ft ²



LEVEL 02

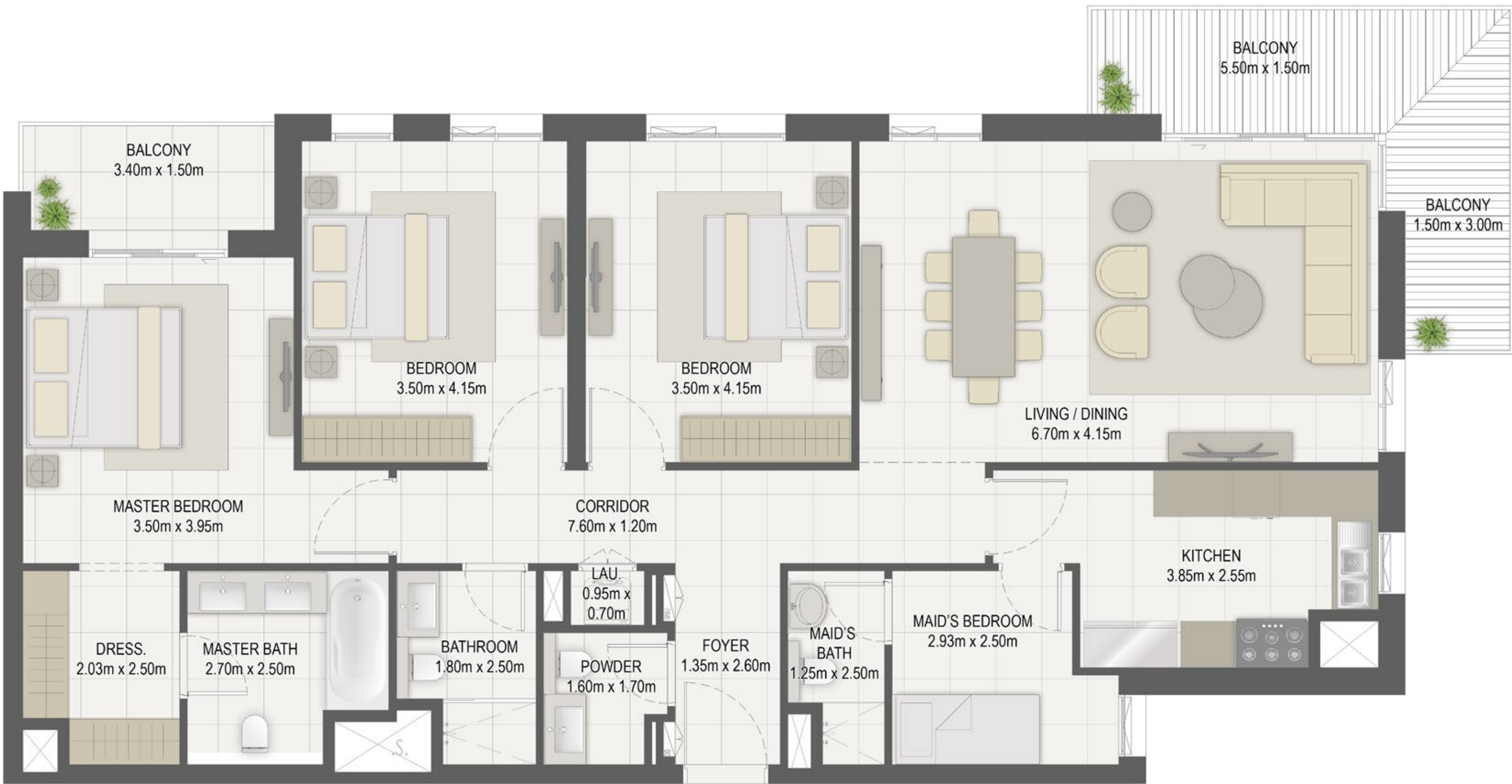


Disclaimer:
1. All room dimensions are measured to structural elements and exclude all finishes and construction tolerances. 2. All dimensions have been provided by our consultant architects. 3. All materials, dimensions and drawings are approximate. Information is subject to change without notice. 4. Actual suite area may vary from the stated area. Drawings not to scale. The developer reserves the right to make revisions. 5. Calculation of suite area is measured as the area bounded by the centre line of the demising or partition walls separating one unit from another unit, the exterior face of all exterior walls, and the exterior face of the corridor wall enclosing the adjoining unit. 6. Calculation of balcony area is measured as the area bounded by the centre line of the demising or partition walls separating one unit from another unit, the outmost face of the enclosing guard and the external face of the unit adjoining the balcony. 7. The units are measured at typical floor in the building. Columns may vary in size depending on the floor level.



LAYLA RESIDENCES

BUILDING	LAYLA
3 BEDROOM	TYPE 3A-1
UNIT NO.	318,418,518,618,717
SUITE AREA	143.06 m ² / 1539.88 ft ²
BALCONY AREA	17.82 m ² / 191.81 ft ²
TOTAL AREA	160.88 m ² / 1,731.70 ft ²



LEVEL 03,04,05,06



LEVEL 07

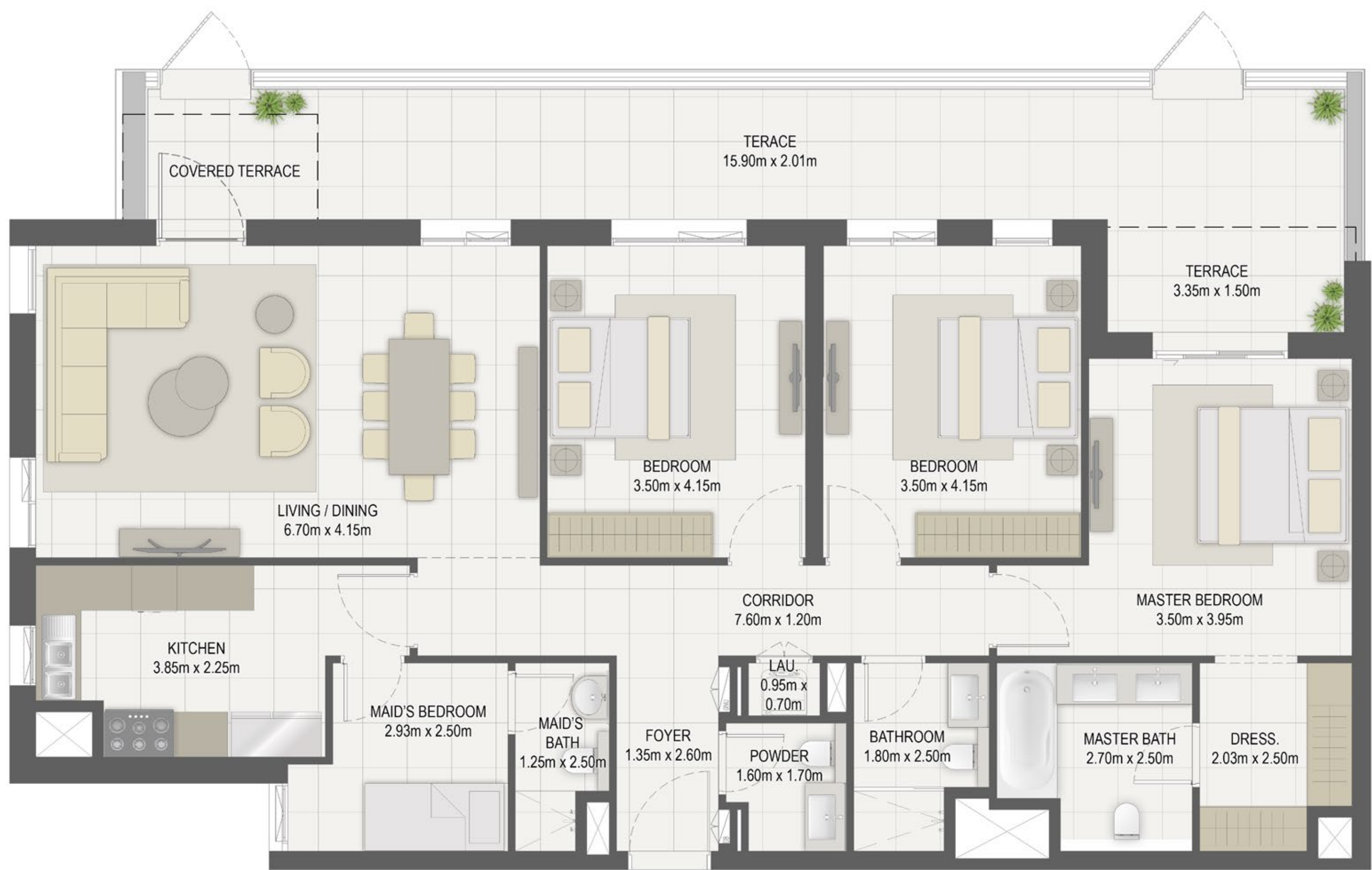


Disclaimer:
1. All room dimensions are measured to structural elements and exclude all finishes and construction tolerances. 2. All dimensions have been provided by our consultant architects. 3. All materials, dimensions and drawings are approximate. Information is subject to change without notice. 4. Actual suite area may vary from the stated area. Drawings not to scale. The developer reserves the right to make revisions. 5. Calculation of suite area is measured as the area bounded by the centre line of the demising or partition walls separating one unit from another unit, the exterior face of all exterior walls, and the exterior face of the corridor wall enclosing the adjoining unit. 6. Calculation of balcony area is measured as the area bounded by the centre line of the demising or partition walls separating one unit from another unit, the outmost face of the enclosing guard and the external face of the unit adjoining the balcony. 7. The units are measured at typical floor in the building. Columns may vary in size depending on the floor level.



LAYLA RESIDENCES

BUILDING	LAYLA
3 BEDROOM	TYPE 3B
UNIT NO.	202
SUITE AREA	142.49 m ² / 1533.75 ft ²
TERRACE AREA	38.86 m ² / 418.28 ft ²
TOTAL AREA	181.35 m ² / 1,952.03 ft ²



LEVEL 02



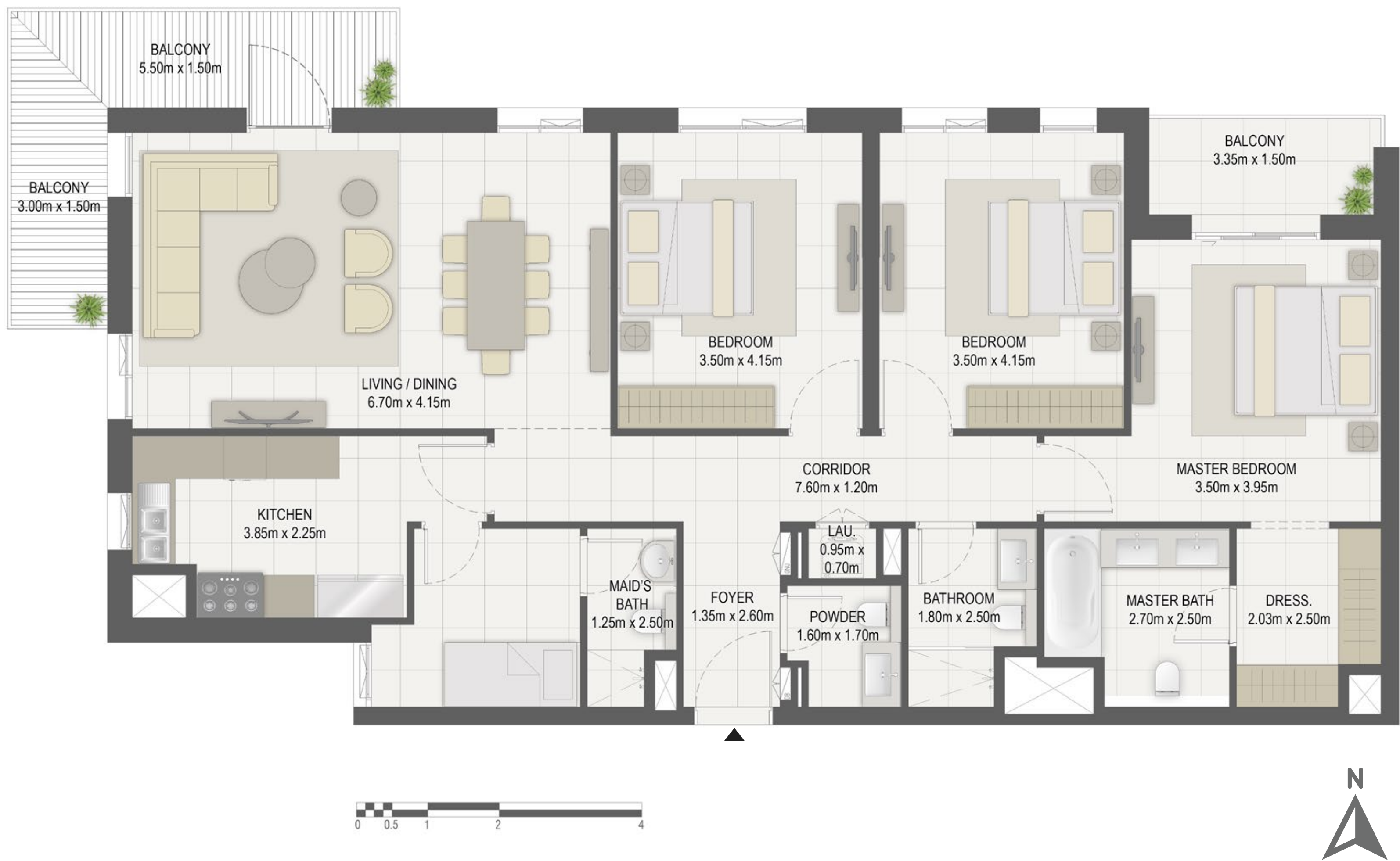
Disclaimer:

1. All room dimensions are measured to structural elements and exclude all finishes and construction tolerances. 2. All dimensions have been provided by our consultant architects. 3. All materials, dimensions and drawings are approximate. Information is subject to change without notice. 4. Actual suite area may vary from the stated area. Drawings not to scale. The developer reserves the right to make revisions. 5. Calculation of suite area is measured as the area bounded by the centre line of the demising or partition walls separating one unit from another unit, the exterior face of all exterior walls, and the exterior face of the corridor wall enclosing the adjoining unit. 6. Calculation of balcony area is measured as the area bounded by the centre line of the demising or partition walls separating one unit from another unit, the outmost face of the enclosing guard and the external face of the unit adjoining the balcony. 7. The units are measured at typical floor in the building. Columns may vary in size depending on the floor level.



LAYLA RESIDENCES

BUILDING	LAYLA
3 BEDROOM	TYPE 3B-1
UNIT NO.	302,402,502,602,702
SUITE AREA	142.49 m ² / 1533.75 ft ²
BALCONY AREA	17.80 m ² / 191.60 ft ²
TOTAL AREA	160.29 m ² / 1,725.35 ft ²



LEVEL 03,04,05,06



LEVEL 07



Disclaimer:
1. All room dimensions are measured to structural elements and exclude all finishes and construction tolerances. 2. All dimensions have been provided by our consultant architects. 3. All materials, dimensions and drawings are approximate. Information is subject to change without notice. 4. Actual suite area may vary from the stated area. Drawings not to scale. The developer reserves the right to make revisions. 5. Calculation of suite area is measured as the area bounded by the centre line of the demising or partition walls separating one unit from another unit, the exterior face of all exterior walls, and the exterior face of the corridor wall enclosing the adjoining unit. 6. Calculation of balcony area is measured as the area bounded by the centre line of the demising or partition walls separating one unit from another unit, the outmost face of the enclosing guard and the external face of the unit adjoining the balcony. 7. The units are measured at typical floor in the building. Columns may vary in size depending on the floor level.