

Mareva 2

THE OASIS



THE OASIS

BY EMAAR

Discover unparalleled luxury living at The Oasis by Emaar, an exclusive world nestled amidst sparkling watercases and verdant landscapes.

Featuring upscale villas and expansive mansions, each contemporary home is designed to capture natural light, stunning views and offer opulent resort-style living.



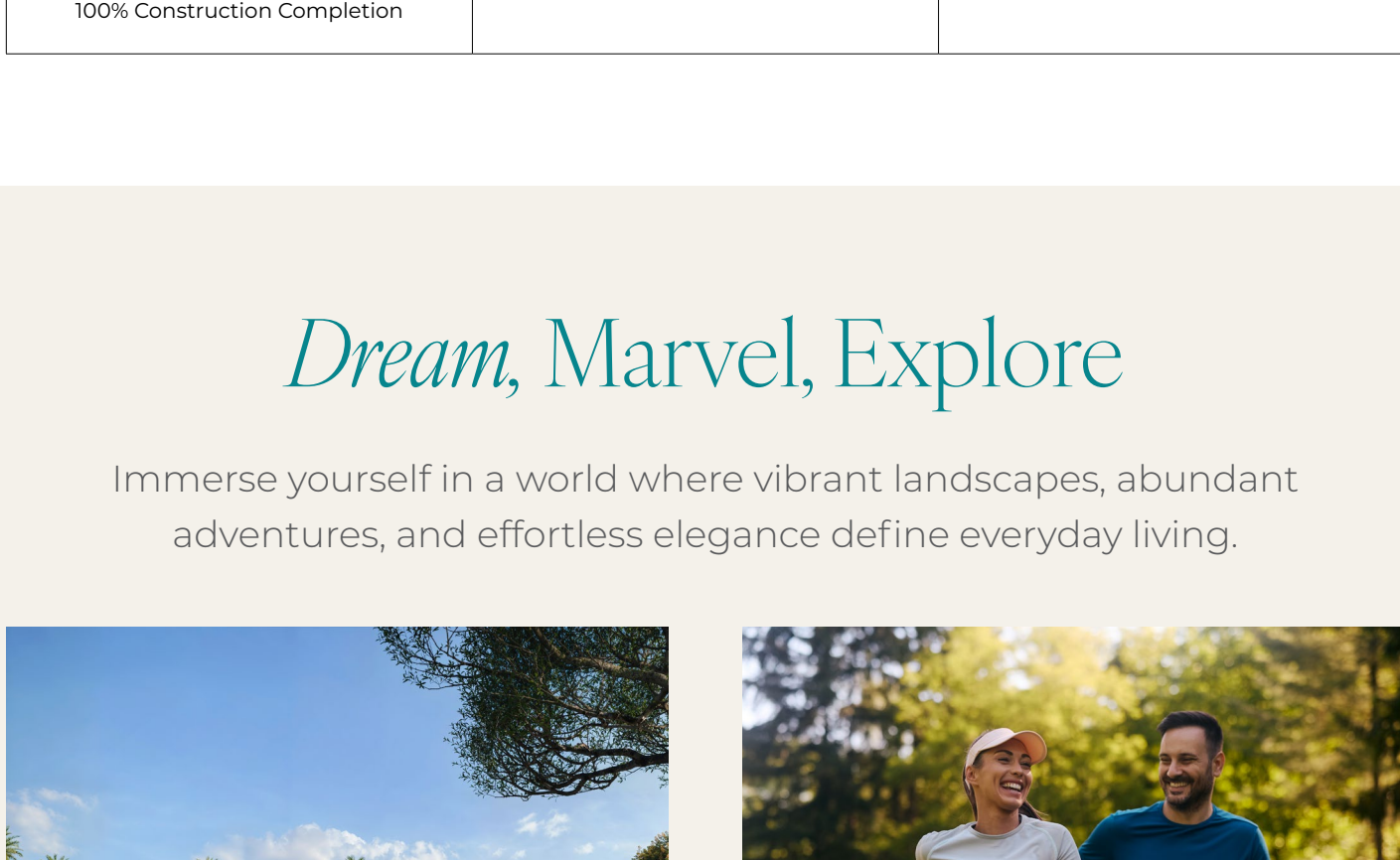
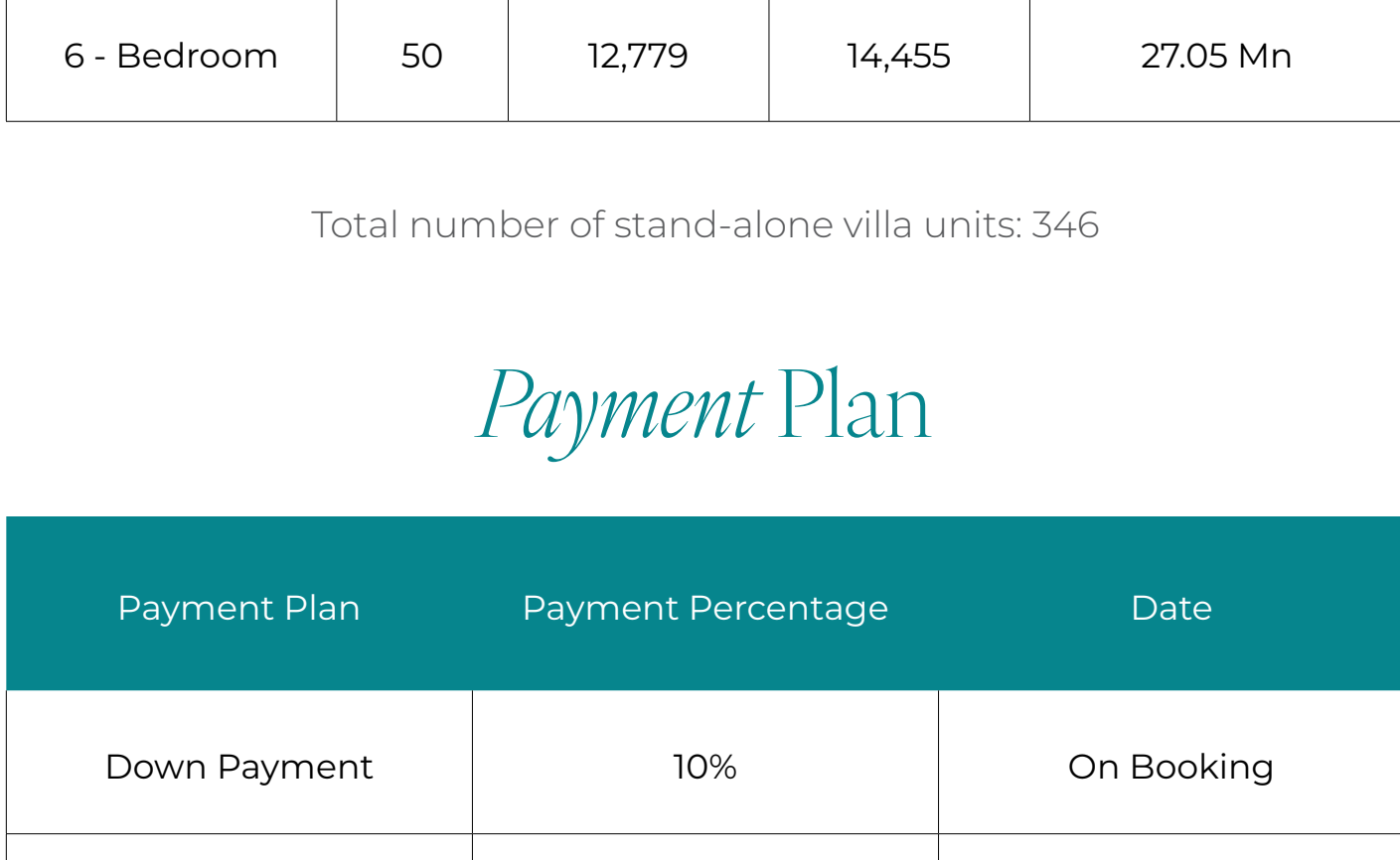
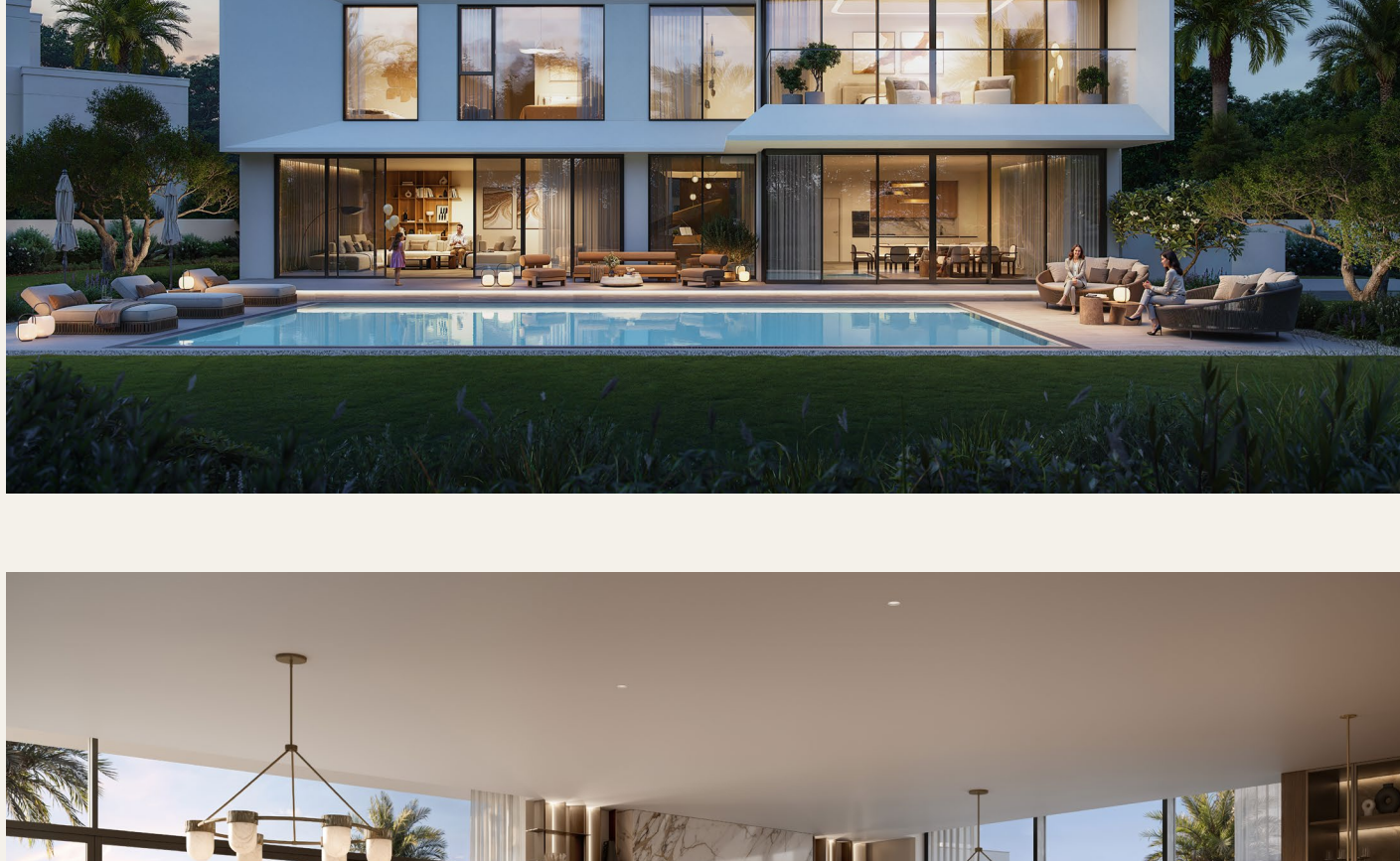
A Kaleidoscopic Reverie

Every moment is a luxurious experience, a curated daydream from sun-drenched beaches with white sands and crystal-clear waters to tranquil escapes.



Where Imagination Lives

Discover 4 – 6 bedroom homes bathed with light, blending water-inspired elegance with contemporary flair.



Unit Details

Type	Units	Min. BUA (sq. ft.)	Min. Plot Area (sq. ft.)	Starting Price (AED)
4 - Bedroom	177	7,254	7,790	13.83 Mn
5 - Bedroom	119	7,965	8,274	15.85 Mn
6 - Bedroom	50	12,779	14,455	27.05 Mn

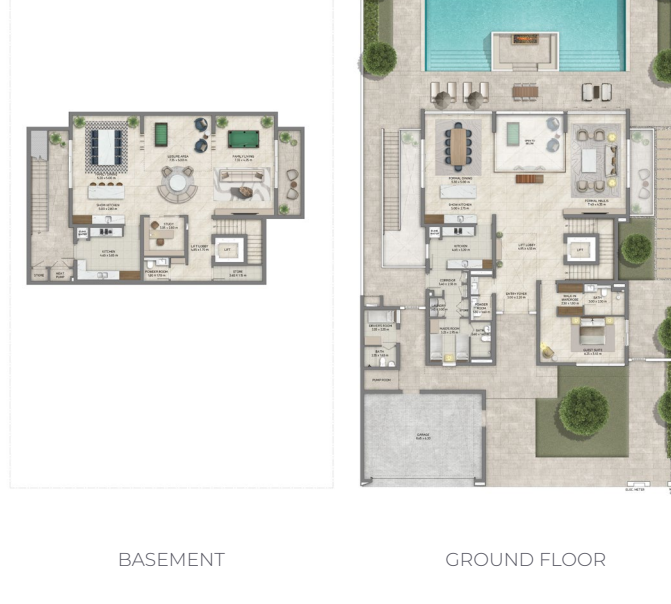
Total number of stand-alone villa units: 346

Payment Plan

Payment Plan	Payment Percentage	Date
Down Payment	10%	On Booking
1st Instalment	10%	FEB 2026
2nd Instalment	10%	AUG 2026
3rd Instalment	10%	FEB 2027
4th Instalment	10%	AUG 2027
5th Instalment 40% Construction Completion	10%	JUN 2028
6th Instalment 60% Construction Completion	10%	NOV 2028
7th Instalment 80% Construction Completion	10%	MAY 2029
8th Instalment 100% Construction Completion	20%	FEB 2030

Dream, Marvel, Explore

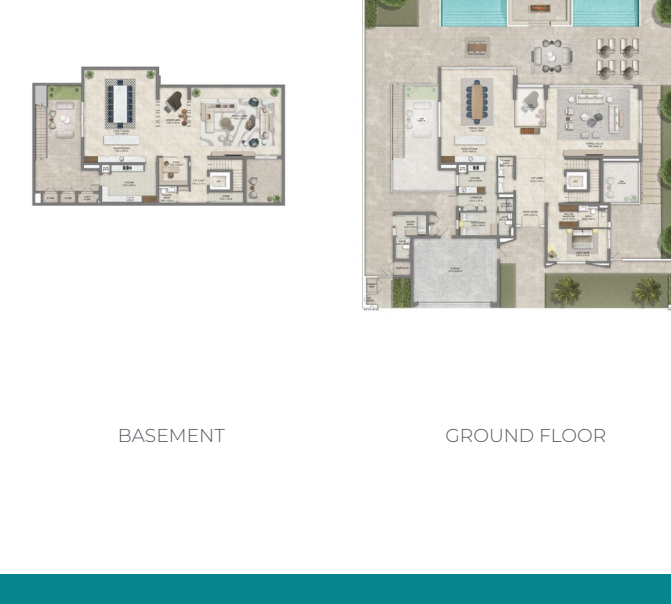
Immerse yourself in a world where vibrant landscapes, abundant adventures, and effortless elegance define everyday living.



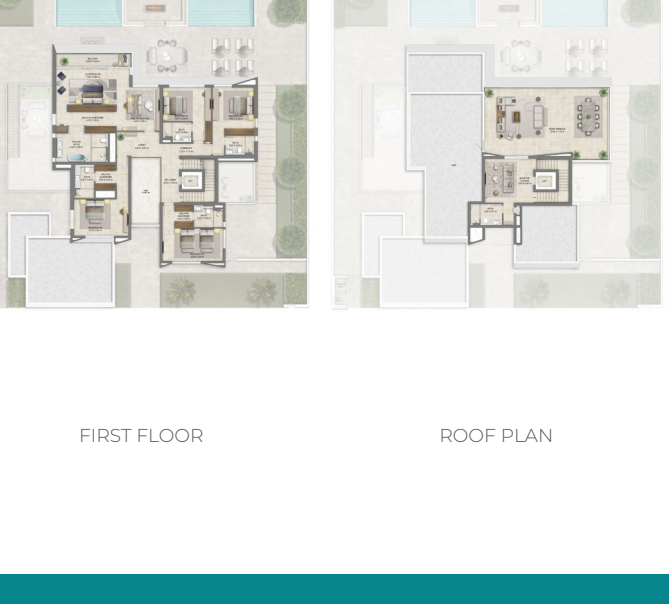
Swimmable Lagoon



Tracks for Jogging and Cycling



Wellness & Spa Facilities



Community Parks & Playgrounds

Typical Floor Plan

4 - BEDROOM



BASEMENT

GROUND FLOOR

FIRST FLOOR

5 - BEDROOM

BASEMENT

GROUND FLOOR

FIRST FLOOR

ROOF PLAN

6 - BEDROOM

BASEMENT

GROUND FLOOR

FIRST FLOOR

ROOF PLAN