

TARAF

# Celo

BY TARAF

FLOOR AND UNIT PLAN

In tune with life





# Stay connected to the symphony of the city

Easy access to major roads that include Al Khail Road and Hessa Street makes navigating the city for business or leisure completely effortless.

Stay within easy reach of everything Dubai has to offer, day or night.



**10 Minutes**  
Dubai Hills Mall



**18 Minutes**  
Palm Jumeirah



**20 Minutes**  
Dubai Marina



**25 Minutes**  
Jumeirah Beach



**20 Minutes**  
Ain Dubai



**35 Minutes**  
Dubai International Airport





# A community that moves to your beat

Jumeirah Village Circle is more than a sought-after area. It's a vibrant and well-established destination.

Parks and lush green spaces invite you to experience a connection with nature, while an abundance of retail stores, restaurants, bars and cafés are merely footsteps away, waiting to be discovered.

Halfa Park & Community Park  
Circle Mall  
JSS International School  
Five Jumeirah Village







# Why choose Cello?

## A YAS HOLDING COMPANY

Taraf Development is the real estate arm of YAS Holding – which is a renowned UAE headquartered investment holding company with a multi-industry business portfolio spanning multiple sectors and more than 50 operating subsidiaries.

## SURROUNDED BY THE BEST OF JVC

Cello is placed right at the edge of JVC, offering the quickest access to Al Khail road, multiple gardens at walking distance, groceries, pharmacies and a JSS International school, all ready and functional available at your convenience.

## THE MOST WELL-PLANNED SPACES

Taraf believes in improving life and lifestyle by building exquisite living spaces. Each home is meticulously planned to provide ample space for you to live a luxurious life.







## Perfectly composed urban residences

From open studios with smart layouts, to spacious 1, 2, 3-bedroom apartments and 4-bedroom penthouses bathed in sunlight, this is the sanctuary you deserve from the fast tempo of life.

An elevated focus on important details and finishes ensures that each residence has the perfect balance of functionality and ambience.

### SIZE RANGE

Studio	430 – 530 sq ft
1 Bedroom	730 – 1,220 sq ft
2 Bedroom	1,180 – 1,540 sq ft
3 Bedroom	1,750 – 2,200 sq ft
4 Bedroom Penthouses	5,000+ sq ft









Amenities  
like no other





Swimming Pool



# Amenities in harmony with your lifestyle

1. Lap Swimming Pool & Kid's Pool
2. Pool Deck
3. Leisure Lawn / Outdoor Cinema
4. Reading Deck
5. Lounge Fire Pit
6. Multi-purpose Room with Social Counter
7. Kid's Indoor & Outdoor Play Area
8. Indoor & Outdoor Gym and Yoga Deck
9. Barbecue Area







Reception



Lift Lobby





Indoor Gymnasium





Amenities Podium

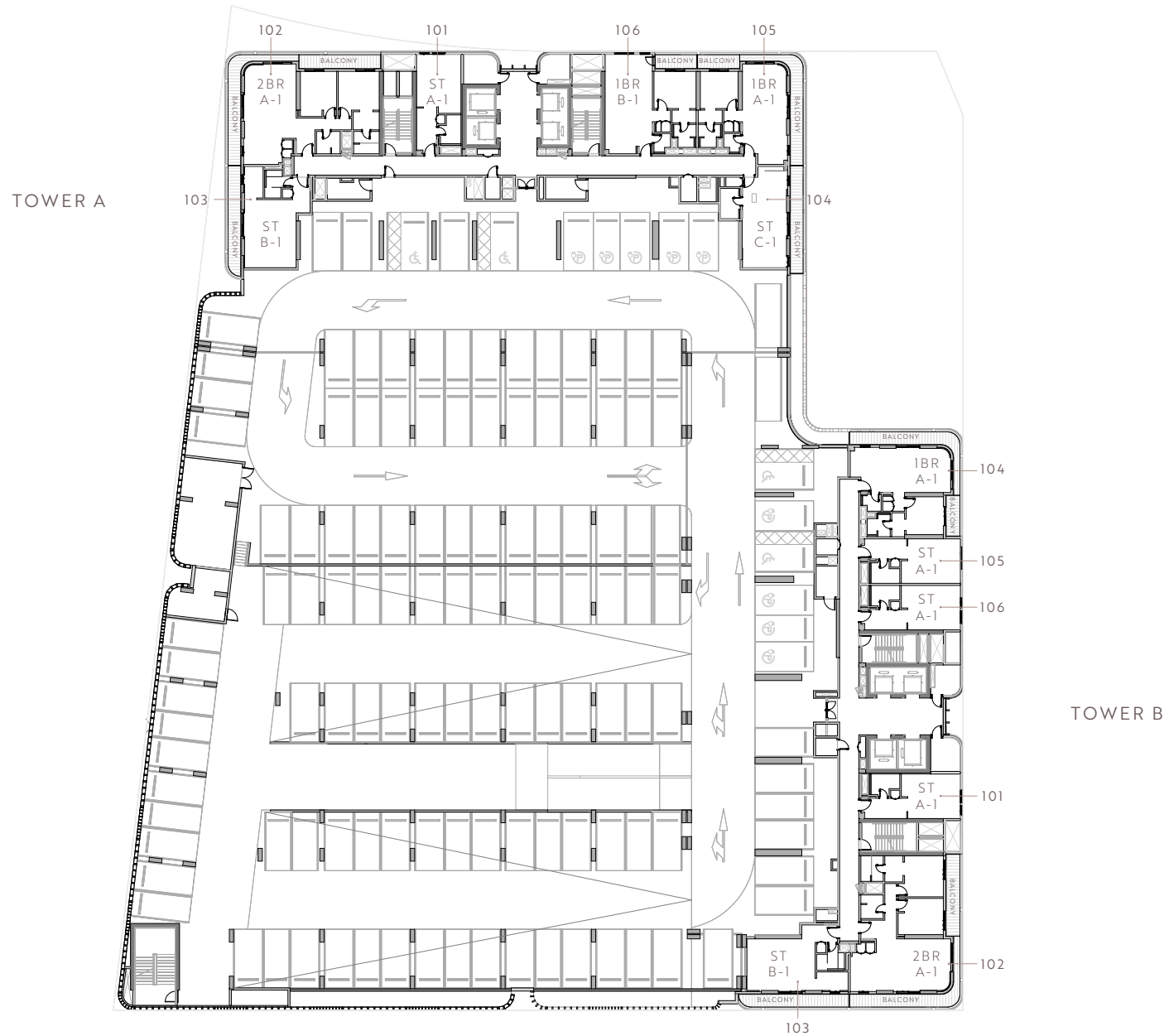




# Floor & Unit Plans



## FIRST FLOOR

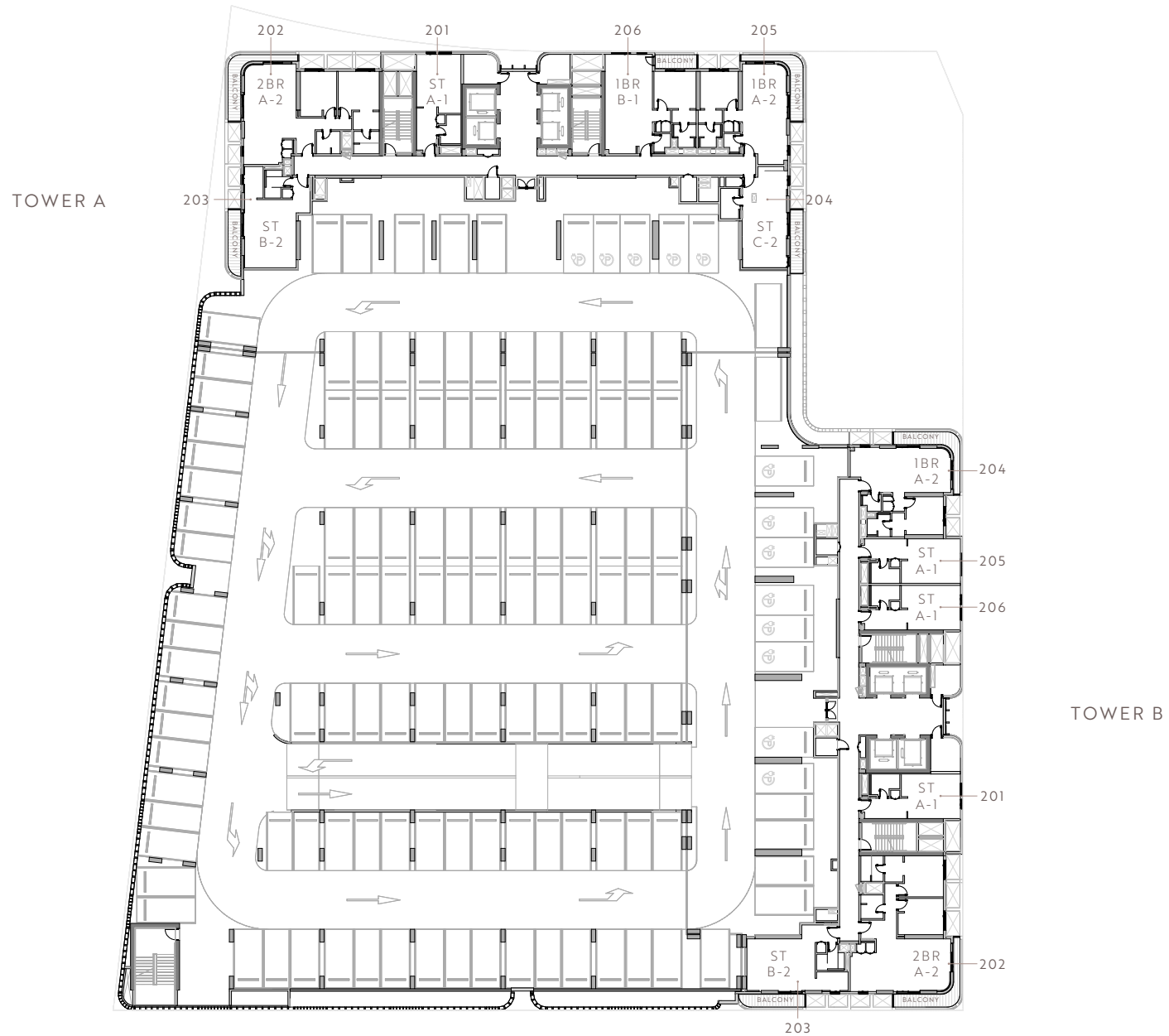


T

Dimensions on floor plans are approximate and some units are mirrored. Final dimensions and floor plans may vary and are subject to change without notice. The developer reserves the right to make revisions. Areas are measured in accordance with the Dubai Land department standards. Internal Furniture/ Equipment and Landscaping are not provided. Artistic renderings and images are for illustrative purpose only and are subject to change without notice.

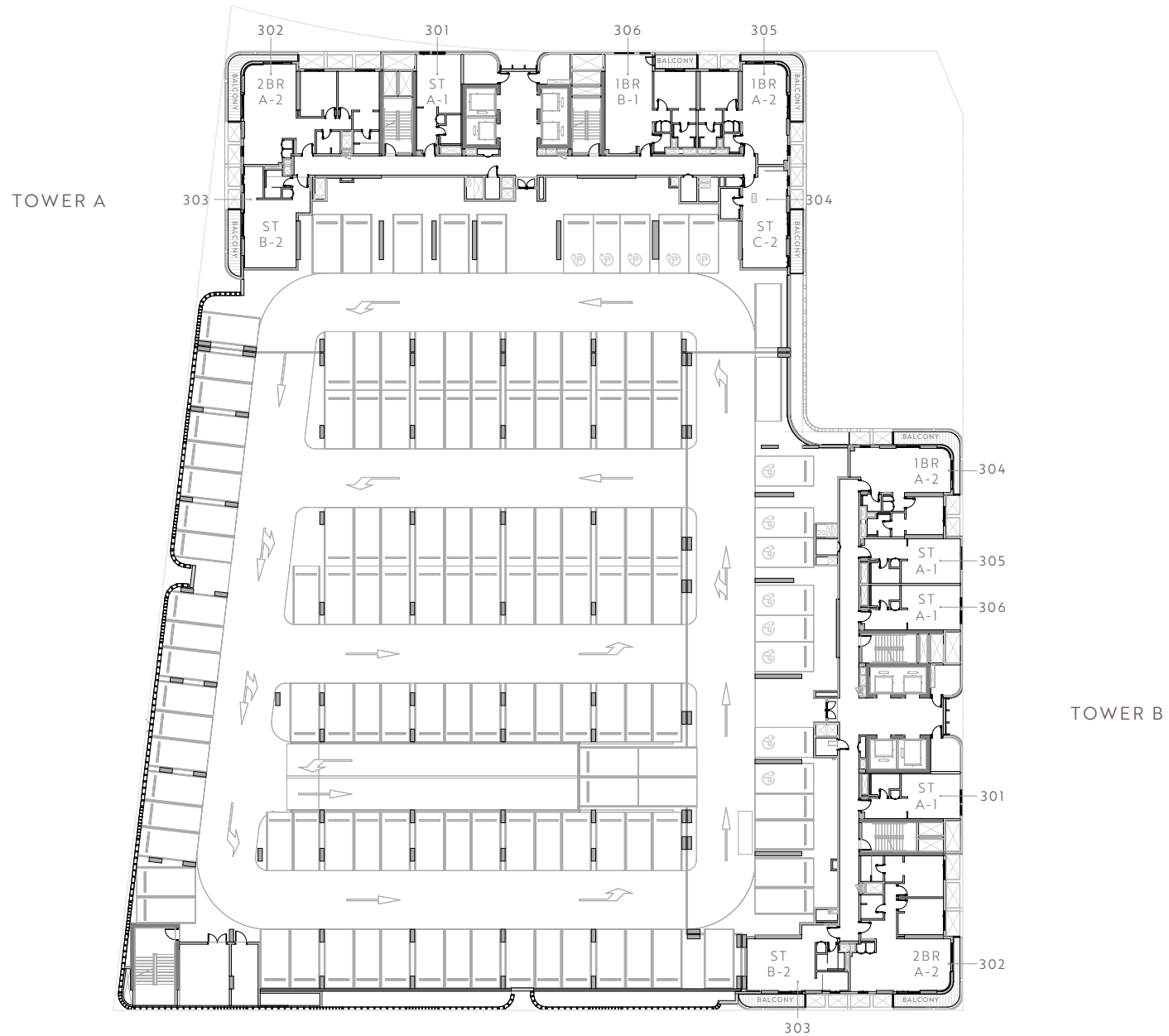


## SECOND FLOOR





## THIRD FLOOR



## FOURTH FLOOR

TOWER A



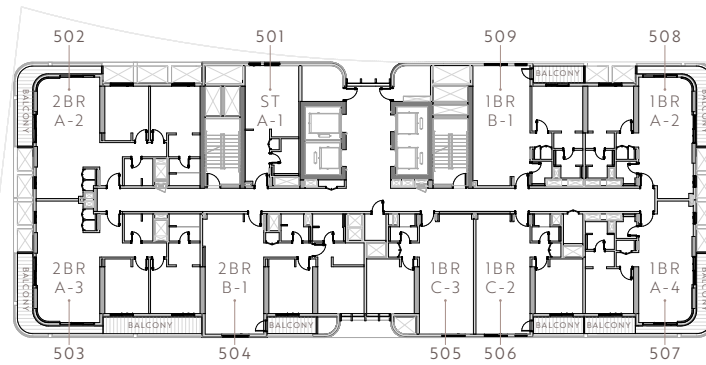
TOWER B



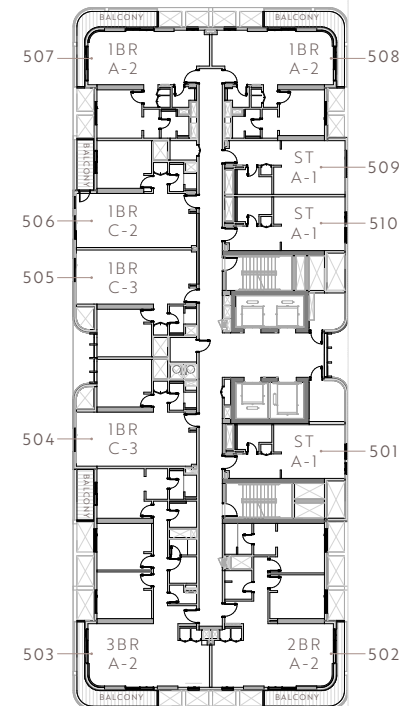


## FIFTH FLOOR

TOWER A



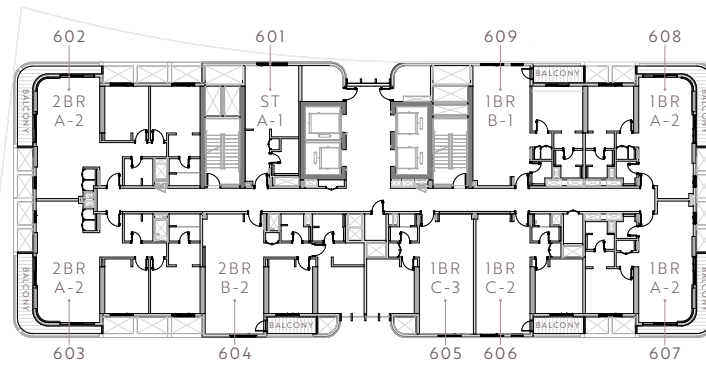
TOWER B



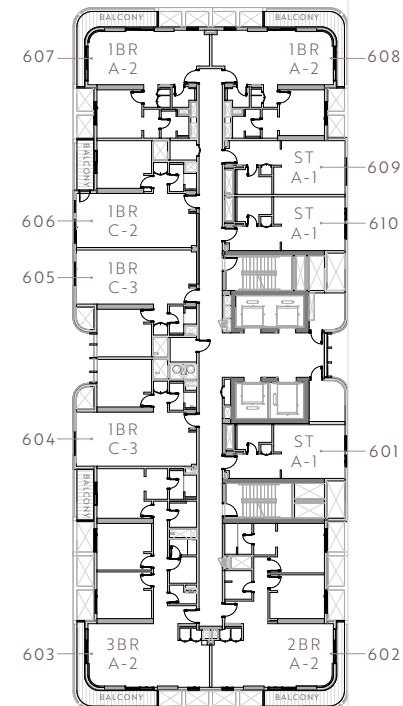
## TYPICAL FLOOR

6<sup>TH</sup> FLOOR - 20<sup>TH</sup> FLOOR

TOWER A

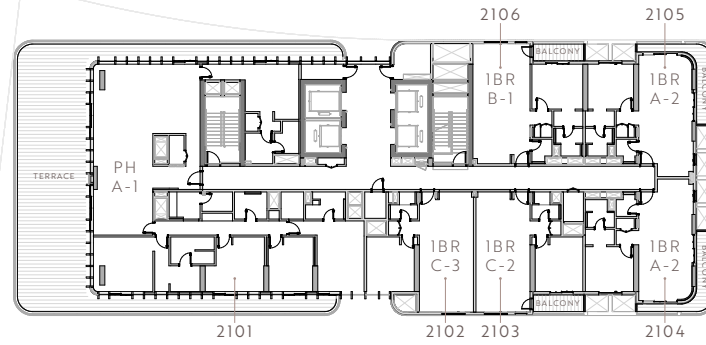


TOWER B

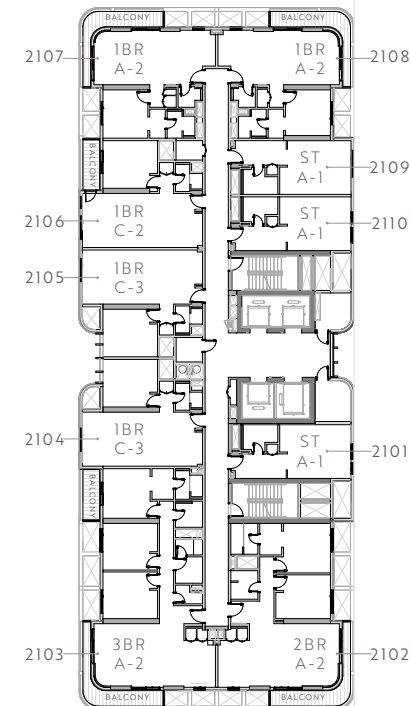




TOWER A

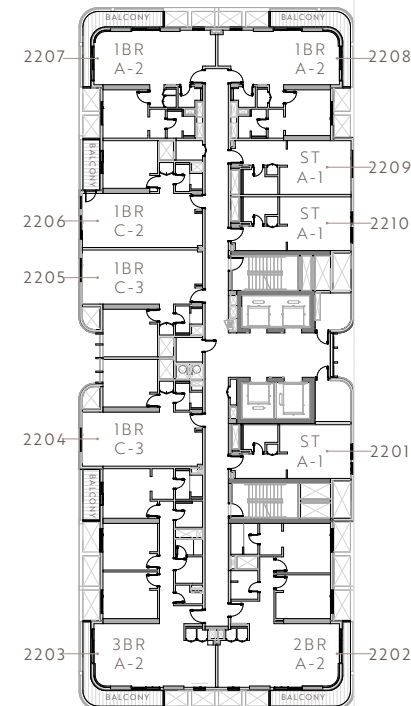
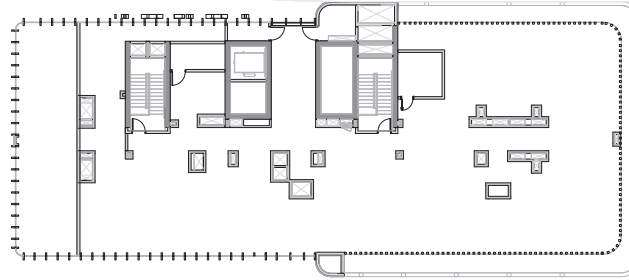


TOWER B





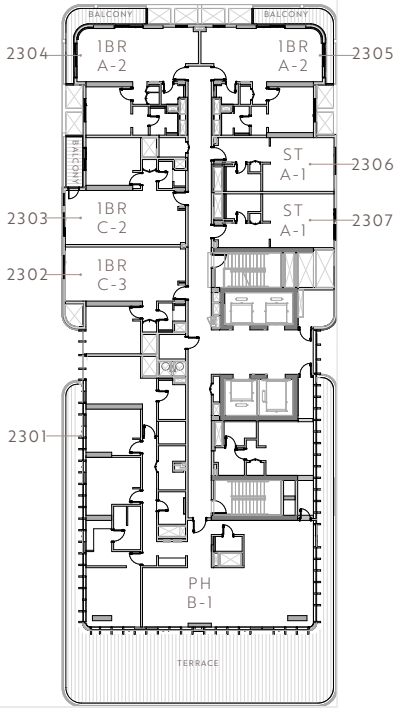
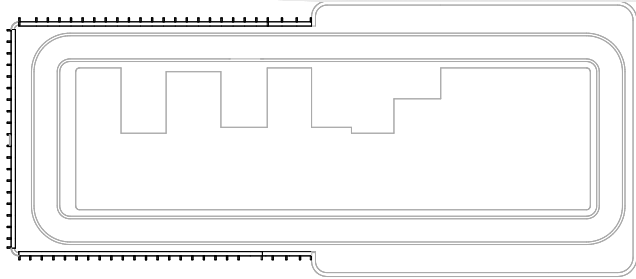
TOWER A



TOWER B



TOWER A



TOWER B

T

Dimensions on floor plans are approximate and some units are mirrored. Final dimensions and floor plans may vary and are subject to change without notice. The developer reserves the right to make revisions. Areas are measured in accordance with the Dubai Land department standards. Internal Furniture/ Equipment and Landscaping are not provided. Artistic renderings and images are for illustrative purpose only and are subject to change without notice.





Cello

TOWER A

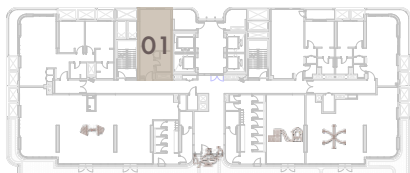
## STUDIO TYPE A-1

SUITE AREA	42 sq.m	452 sq.ft
BALCONY AREA	-	-
TOTAL SELLABLE AREA	42 sq.m	452 sq.ft
UNIT NO.	101,201,301,401,501,601,701,801,901, 1001,1101,1201,1301,1401,1501,1601, 1701,1801,1901,2001	

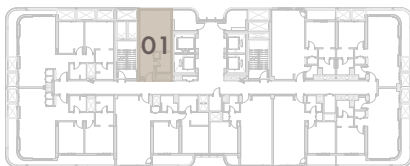
### 1<sup>ST</sup> FLOOR TO 3<sup>RD</sup> FLOOR



### 4<sup>TH</sup> FLOOR



### 5<sup>TH</sup> FLOOR - 20<sup>TH</sup> FLOOR



# Cello

## TOWER A



Dimensions on floor plans are approximate and some units are mirrored. Final dimensions and floor plans may vary and are subject to change without notice. The developer reserves the right to make revisions. Areas are measured in accordance with the Dubai Land department standards. Internal Furniture/ Equipment and Landscaping are not provided. Artistic renderings and images are for illustrative purpose only and are subject to change without notice.

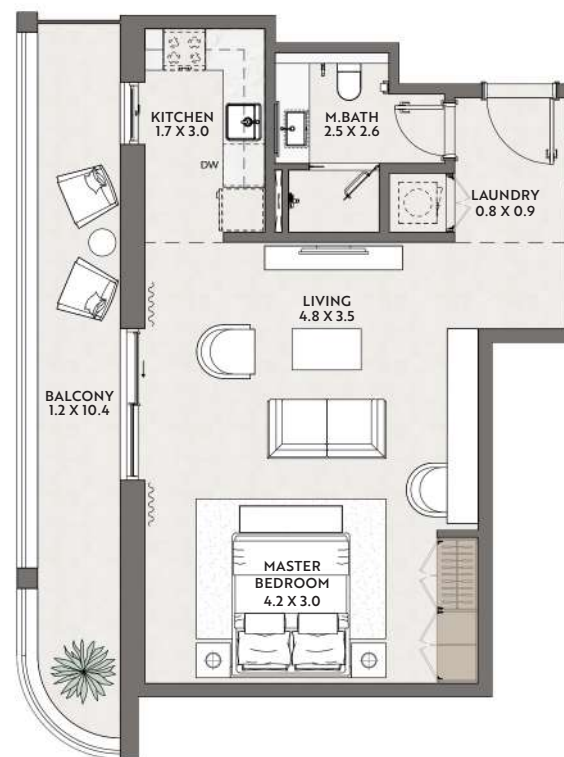




## STUDIO TYPE B-1

SUITE AREA	53 sq.m	575 sq.ft
BALCONY AREA	16 sq.m	174 sq.ft
TOTAL SELLABLE AREA	70 sq.m	749 sq.ft
UNIT NO.	103	

## 1<sup>ST</sup> FLOOR



# Cello

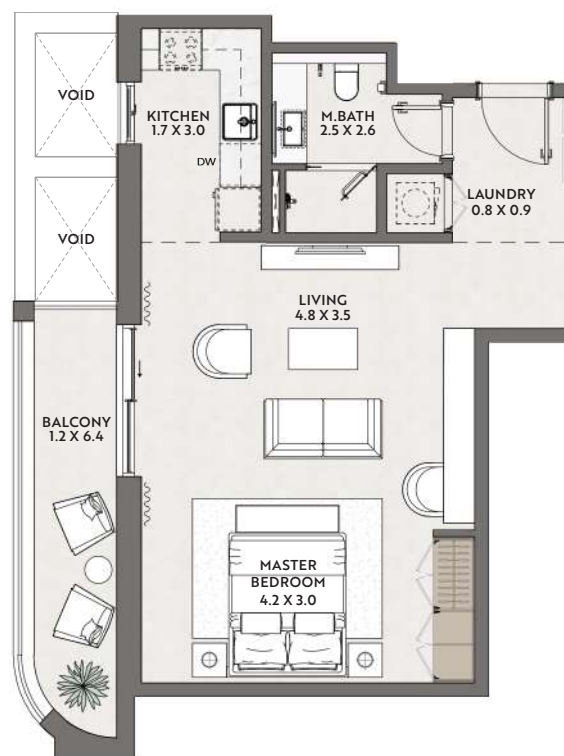
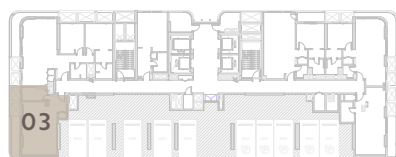
## TOWER A

Dimensions on floor plans are approximate and some units are mirrored. Final dimensions and floor plans may vary and are subject to change without notice. The developer reserves the right to make revisions. Areas are measured in accordance with the Dubai Land department standards. Internal Furniture/ Equipment and Landscaping are not provided. Artistic renderings and images are for illustrative purpose only and are subject to change without notice.

## STUDIO TYPE B-2

SUITE AREA	53 sq.m	575 sq.ft
BALCONY AREA	10 sq.m	103 to 104 sq.ft
TOTAL SELLABLE AREA	63 sq.m	678 sq.ft
UNIT NO.	203, 303	

## 2<sup>nd</sup> FLOOR AND 3<sup>rd</sup> FLOOR



Ceilo  
TOWER A

Dimensions on floor plans are approximate and some units are mirrored. Final dimensions and floor plans may vary and are subject to change without notice. The developer reserves the right to make revisions. Areas are measured in accordance with the Dubai Land department standards. Internal Furniture/ Equipment and Landscaping are not provided. Artistic renderings and images are for illustrative purpose only and are subject to change without notice.

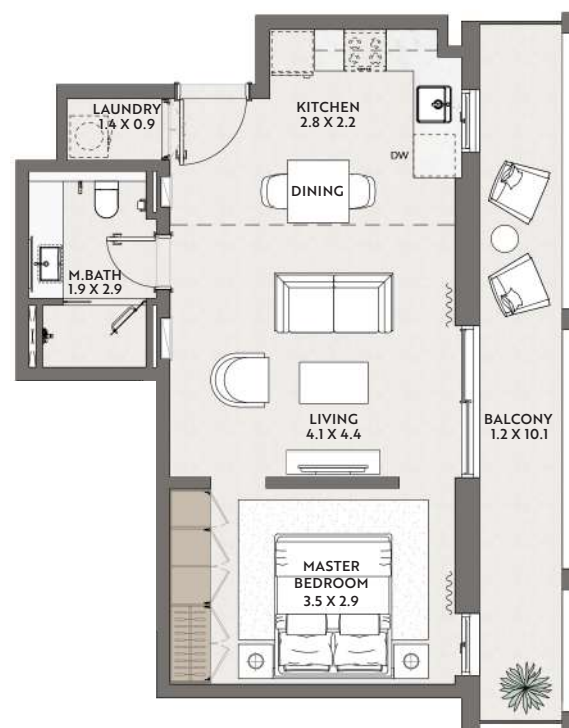




## STUDIO TYPE C-1

SUITE AREA	50 sq.m	536 sq.ft
BALCONY AREA	16 sq.m	171 sq.ft
TOTAL SELLABLE AREA	66 sq.m	707 sq.ft
UNIT NO.	104	

## 1<sup>st</sup> FLOOR



Ceilo  
TOWER A

Dimensions on floor plans are approximate and some units are mirrored. Final dimensions and floor plans may vary and are subject to change without notice. The developer reserves the right to make revisions. Areas are measured in accordance with the Dubai Land department standards. Internal Furniture/ Equipment and Landscaping are not provided. Artistic renderings and images are for illustrative purpose only and are subject to change without notice.

## STUDIO TYPE C-2

SUITE AREA	50 sq.m	537 sq.ft
BALCONY AREA	9 sq.m	99 sq.ft
TOTAL SELLABLE AREA	59 sq.m	636 sq.ft
UNIT NO.	204, 304	

## 2<sup>nd</sup> FLOOR AND 3<sup>rd</sup> FLOOR



Ceilo  
TOWER A

Dimensions on floor plans are approximate and some units are mirrored. Final dimensions and floor plans may vary and are subject to change without notice. The developer reserves the right to make revisions. Areas are measured in accordance with the Dubai Land department standards. Internal Furniture/ Equipment and Landscaping are not provided. Artistic renderings and images are for illustrative purpose only and are subject to change without notice.



## 1 BEDROOM TYPE A-1

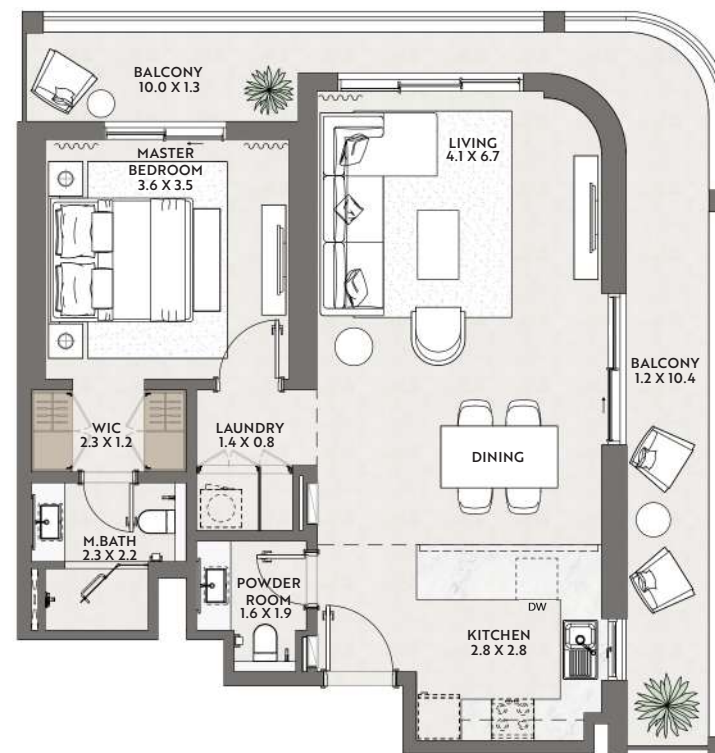
SUITE AREA	71 sq.m	769 sq.ft
BALCONY AREA	27 sq.m	293 sq.ft
TOTAL SELLABLE AREA	99 sq.m	1,062 sq.ft
UNIT NO.	105	

1<sup>st</sup> FLOOR



# Cello

## TOWER A



Dimensions on floor plans are approximate and some units are mirrored. Final dimensions and floor plans may vary and are subject to change without notice. The developer reserves the right to make revisions. Areas are measured in accordance with the Dubai Land department standards. Internal Furniture/ Equipment and Landscaping are not provided. Artistic renderings and images are for illustrative purpose only and are subject to change without notice.

# Ceilo

## TOWER A

### 1 BEDROOM TYPE A-2

SUITE AREA	72 sq.m	770 to 774 sq.ft
BALCONY AREA	14 sq.m	150 sq.ft
TOTAL SELLABLE AREA	86 sq.m	920 to 924 sq.ft
UNIT NO.	205,305,403,508,607,608,707,708, 807,808,907,908,1007,1008,1107, 1108,1207,1208,1307,1308,1407,1408, 1507,1508,1607,1608,1707,1708,1807, 1808,1907,1908,2007,2008,2104,2105	

#### 2<sup>nd</sup> FLOOR AND 3<sup>rd</sup> FLOOR



#### 4<sup>th</sup> FLOOR



#### 5<sup>th</sup> FLOOR



#### 6<sup>th</sup> FLOOR - 20<sup>th</sup> FLOOR



#### 21<sup>st</sup> FLOOR



Dimensions on floor plans are approximate and some units are mirrored. Final dimensions and floor plans may vary and are subject to change without notice. The developer reserves the right to make revisions. Areas are measured in accordance with the Dubai Land department standards. Internal Furniture/ Equipment and Landscaping are not provided. Artistic renderings and images are for illustrative purpose only and are subject to change without notice.



## 1 BEDROOM TYPE A-4

SUITE AREA	72 sq.m	773 sq.ft
BALCONY AREA	21 sq.m	223 sq.ft
TOTAL SELLABLE AREA	92 sq.m	995 sq.ft
UNIT NO.	507	

5<sup>th</sup> FLOOR



Ceilo  
TOWER A

Dimensions on floor plans are approximate and some units are mirrored. Final dimensions and floor plans may vary and are subject to change without notice. The developer reserves the right to make revisions. Areas are measured in accordance with the Dubai Land department standards. Internal Furniture/ Equipment and Landscaping are not provided. Artistic renderings and images are for illustrative purpose only and are subject to change without notice.

# Cello

## TOWER A

### 1 BEDROOM TYPE B-1

SUITE AREA	76 sq.m	815 to 816 sq.ft
BALCONY AREA	7 sq.m	72 sq.ft
TOTAL SELLABLE AREA	82 sq.m	887 to 888 sq.ft
UNIT NO.	106,206,306,404,509,609,709,809, 909,1009,1109,1209,1309,1409,1509, 1609,1709,1809,1909,2009,2106	

#### 1<sup>st</sup> FLOOR - 3<sup>rd</sup> FLOOR



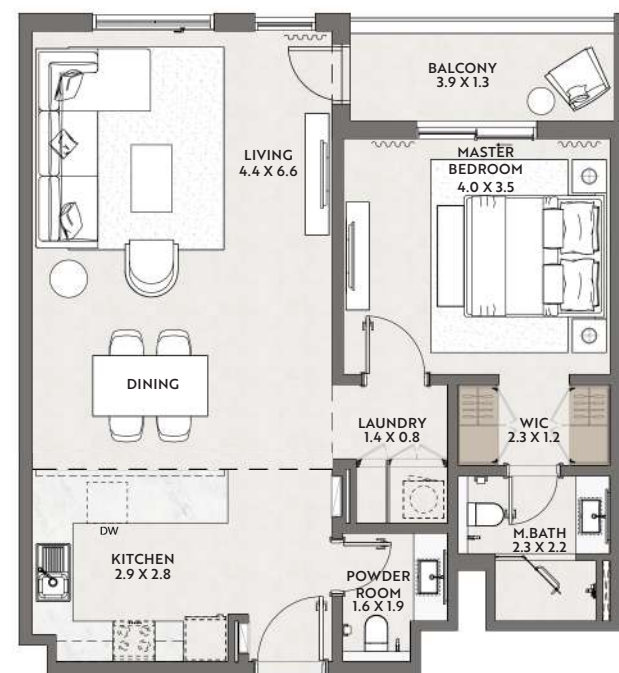
#### 4<sup>th</sup> FLOOR



#### 5<sup>th</sup> FLOOR - 20<sup>th</sup> FLOOR



#### 21<sup>st</sup> FLOOR



Dimensions on floor plans are approximate and some units are mirrored. Final dimensions and floor plans may vary and are subject to change without notice. The developer reserves the right to make revisions. Areas are measured in accordance with the Dubai Land department standards. Internal Furniture/ Equipment and Landscaping are not provided. Artistic renderings and images are for illustrative purpose only and are subject to change without notice.

# Ceilo

## TOWER A

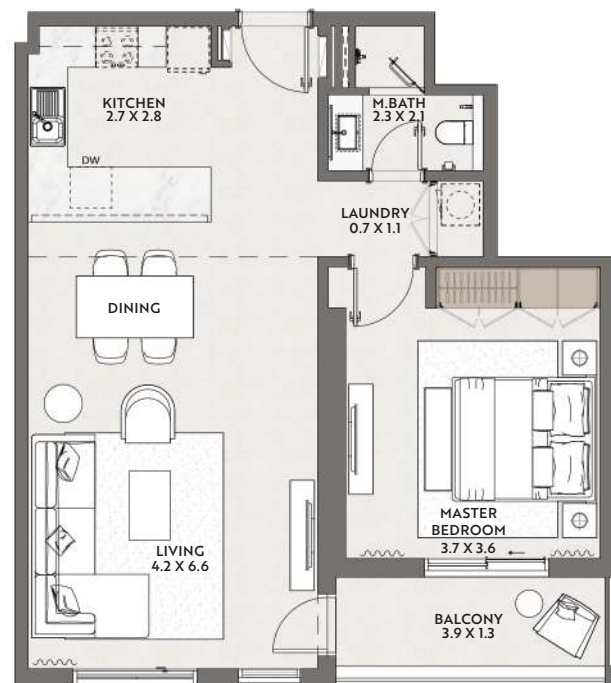
### 1 BEDROOM TYPE C-2

SUITE AREA	68 sq.m	732 sq.ft
BALCONY AREA	7 sq.m	72 sq.ft
TOTAL SELLABLE AREA	75 sq.m	804 sq.ft
UNIT NO.	506,606,706,806,906,1006,1106, 1206,1306,1406,1506,1606,1706,1806, 1906,2006,2103	

### 5<sup>th</sup> FLOOR - 20<sup>th</sup> FLOOR



### 21<sup>st</sup> FLOOR



Dimensions on floor plans are approximate and some units are mirrored. Final dimensions and floor plans may vary and are subject to change without notice. The developer reserves the right to make revisions. Areas are measured in accordance with the Dubai Land department standards. Internal Furniture/ Equipment and Landscaping are not provided. Artistic renderings and images are for illustrative purpose only and are subject to change without notice.





# Cello

## TOWER A

### 1 BEDROOM TYPE C-3

SUITE AREA	68 sq.m	733 sq.ft
BALCONY AREA	-	-
TOTAL SELLABLE AREA	68 sq.m	733 sq.ft
UNIT NO.	505,605,705,805,905,1005,1105,1205, 1305,1405,1505,1605,1705,1805,1905, 2005,2102	

### 5<sup>th</sup> FLOOR - 20<sup>th</sup> FLOOR



### 21<sup>st</sup> FLOOR



Dimensions on floor plans are approximate and some units are mirrored. Final dimensions and floor plans may vary and are subject to change without notice. The developer reserves the right to make revisions. Areas are measured in accordance with the Dubai Land department standards. Internal Furniture/ Equipment and Landscaping are not provided. Artistic renderings and images are for illustrative purpose only and are subject to change without notice.



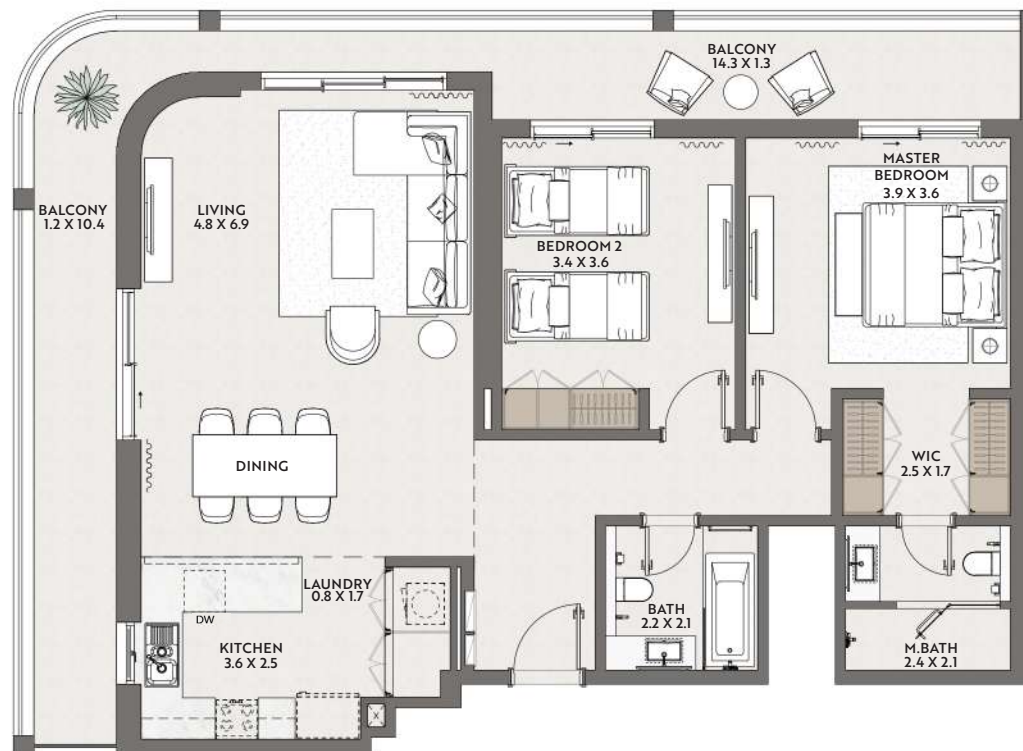
# Cello

## TOWER A

### 2 BEDROOM TYPE A-1

SUITE AREA	109 sq.m	1,170 sq.ft
BALCONY AREA	34 sq.m	369 sq.ft
TOTAL SELLABLE AREA	143 sq.m	1,539 sq.ft
UNIT NO.	102	

### 1<sup>ST</sup> FLOOR



Dimensions on floor plans are approximate and some units are mirrored. Final dimensions and floor plans may vary and are subject to change without notice. The developer reserves the right to make revisions. Areas are measured in accordance with the Dubai Land department standards. Internal Furniture/ Equipment and Landscaping are not provided. Artistic renderings and images are for illustrative purpose only and are subject to change without notice.

## 2 BEDROOM TYPE A-2

SUITE AREA	109 sq.m	1,169 to 1,174 sq.ft
BALCONY AREA	15 sq.m	157 sq.ft
TOTAL SELLABLE AREA	123 to 124 sq.m	1,326 to 1,331 sq.ft
UNIT NO.	202,302,402,502,602,603,702,703, 802,803,902,903,1002,1003,1102, 1103,1202,1203,1302,1303,1402,1403, 1502,1503,1602,1603,1702,1703,1802, 1803,1902,1903,2002,2003	

### 2<sup>nd</sup> FLOOR - 3<sup>rd</sup> FLOOR



### 4<sup>th</sup> FLOOR



### 5<sup>th</sup> FLOOR



### 6<sup>th</sup> FLOOR - 20<sup>th</sup> FLOOR



Ceilo  
TOWER A

Dimensions on floor plans are approximate and some units are mirrored. Final dimensions and floor plans may vary and are subject to change without notice. The developer reserves the right to make revisions. Areas are measured in accordance with the Dubai Land department standards. Internal Furniture/ Equipment and Landscaping are not provided. Artistic renderings and images are for illustrative purpose only and are subject to change without notice.



## 2 BEDROOM TYPE A-3

SUITE AREA	108 sq.m	1,166 sq.ft
BALCONY AREA	28 sq.m	298 sq.ft
TOTAL SELLABLE AREA	136 sq.m	1,464 sq.ft
UNIT NO.	503	

# Ceilo

## TOWER A

5<sup>th</sup> FLOOR



Dimensions on floor plans are approximate and some units are mirrored. Final dimensions and floor plans may vary and are subject to change without notice. The developer reserves the right to make revisions. Areas are measured in accordance with the Dubai Land department standards. Internal Furniture/ Equipment and Landscaping are not provided. Artistic renderings and images are for illustrative purpose only and are subject to change without notice.

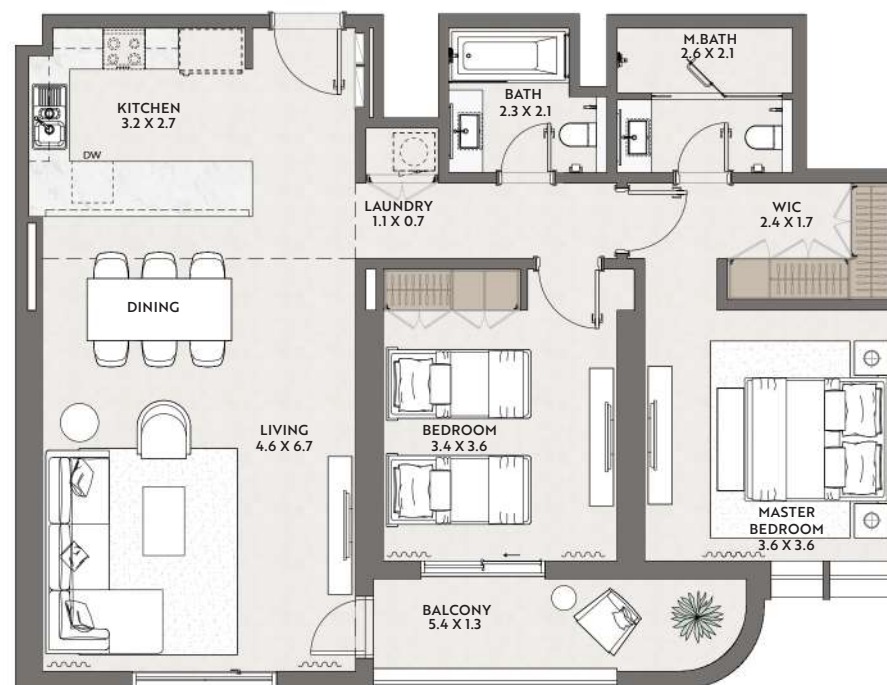
## 2 BEDROOM TYPE B-1

SUITE AREA	104 sq.m	1,116 sq.ft
BALCONY AREA	9 sq.m	97 sq.ft
TOTAL SELLABLE AREA	113 sq.m	1,213 sq.ft
UNIT NO.	504	

# Cello

## TOWER A

### 5<sup>th</sup> FLOOR

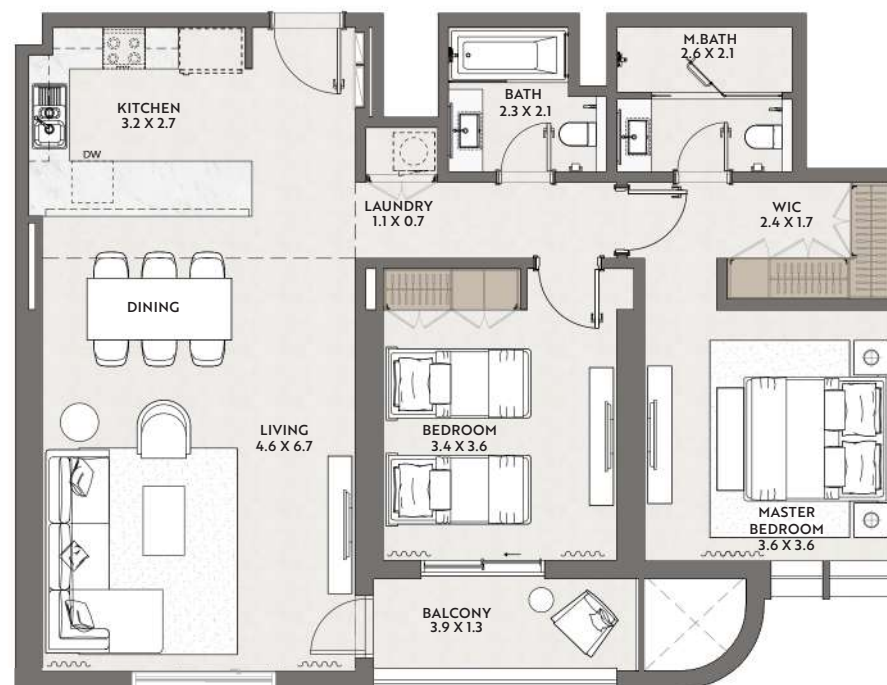


T
 Dimensions on floor plans are approximate and some units are mirrored. Final dimensions and floor plans may vary and are subject to change without notice. The developer reserves the right to make revisions. Areas are measured in accordance with the Dubai Land department standards. Internal Furniture/ Equipment and Landscaping are not provided. Artistic renderings and images are for illustrative purpose only and are subject to change without notice.

## 2 BEDROOM TYPE B-2

SUITE AREA	104 sq.m	1,116 sq.ft
BALCONY AREA	7 sq.m	71 sq.ft
TOTAL SELLABLE AREA	110 sq.m	1,187 sq.ft
UNIT NO.	604,704,804,904,1004,1104,1204, 1304,1404,1504,1604,1704,1804, 1904,2004	

6<sup>th</sup> FLOOR - 20<sup>th</sup> FLOOR



Ceilo  
TOWER A

Dimensions on floor plans are approximate and some units are mirrored. Final dimensions and floor plans may vary and are subject to change without notice. The developer reserves the right to make revisions. Areas are measured in accordance with the Dubai Land department standards. Internal Furniture/ Equipment and Landscaping are not provided. Artistic renderings and images are for illustrative purpose only and are subject to change without notice.



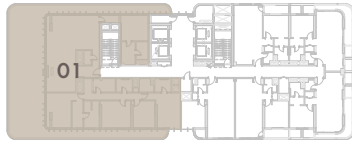
# Cello

## TOWER A

### PENTHOUSE TYPE A-1

SUITE AREA	289 sq.m	3,108 sq.ft
BALCONY AREA	183 sq.m	1,970 sq.ft
TOTAL SELLABLE AREA	472 sq.m	5,078 sq.ft
UNIT NO.	2101	

21<sup>st</sup> FLOOR



Dimensions on floor plans are approximate and some units are mirrored. Final dimensions and floor plans may vary and are subject to change without notice. The developer reserves the right to make revisions. Areas are measured in accordance with the Dubai Land department standards. Internal Furniture/ Equipment and Landscaping are not provided. Artistic renderings and images are for illustrative purpose only and are subject to change without notice.

Cello

TOWER B

# Cello

## TOWER B

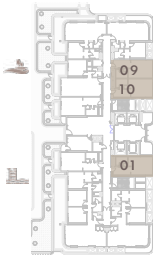
### STUDIO TYPE A-1

SUITE AREA	40 to 42 sq.m	435 to 452 sq.ft
BALCONY AREA	-	
TOTAL SELLABLE AREA	40 to 42 sq.m	435 to 452 sq.ft
UNIT NO.	101,105,106,201,205,206,301,305,306, 401,409,410,501,509,510,601,609,610, 701,709,710,801,809,810,901,909,910, 1001,1009,1010,1101,1109,1110,1201, 1209,1210,1301,1309,1310,1401,1409, 1410,1501,1509,1510,1601,1609,1610, 1701,1709,1710,1801,1809,1810,1901, 1909,1910,2001,2009,2010,2101,2109, 2110,2201,2209,2210,2306,2307	

1<sup>st</sup> FLOOR - 3<sup>rd</sup> FLOOR



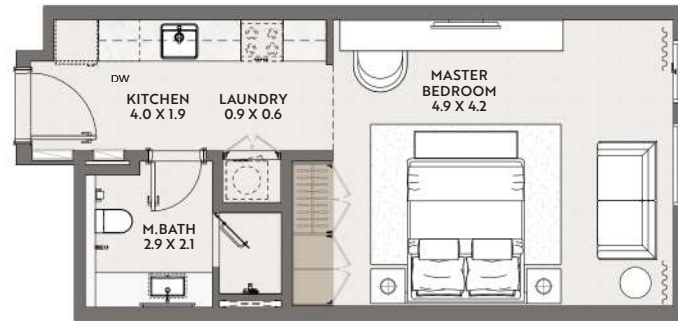
4<sup>th</sup> FLOOR



5<sup>th</sup> FLOOR - 22<sup>nd</sup> FLOOR



23<sup>rd</sup> FLOOR



Dimensions on floor plans are approximate and some units are mirrored. Final dimensions and floor plans may vary and are subject to change without notice. The developer reserves the right to make revisions. Areas are measured in accordance with the Dubai Land department standards. Internal Furniture/ Equipment and Landscaping are not provided. Artistic renderings and images are for illustrative purpose only and are subject to change without notice.



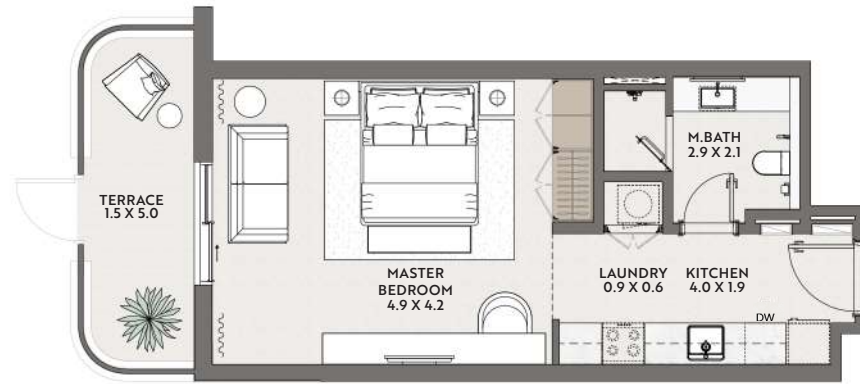
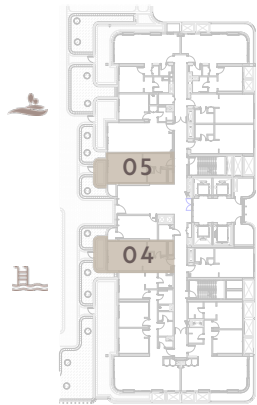
## STUDIO TYPE A-2

SUITE AREA	40 sq.m	434 to 436 sq.ft
BALCONY AREA	7 sq.m	75 to 94 sq.ft
TOTAL SELLABLE AREA	47 sq.m	509 to 531 sq.ft
UNIT NO.	404, 405	

# Ceilo

## TOWER B

### 4<sup>th</sup> FLOOR



Dimensions on floor plans are approximate and some units are mirrored. Final dimensions and floor plans may vary and are subject to change without notice. The developer reserves the right to make revisions. Areas are measured in accordance with the Dubai Land department standards. Internal Furniture/ Equipment and Landscaping are not provided. Artistic renderings and images are for illustrative purpose only and are subject to change without notice.



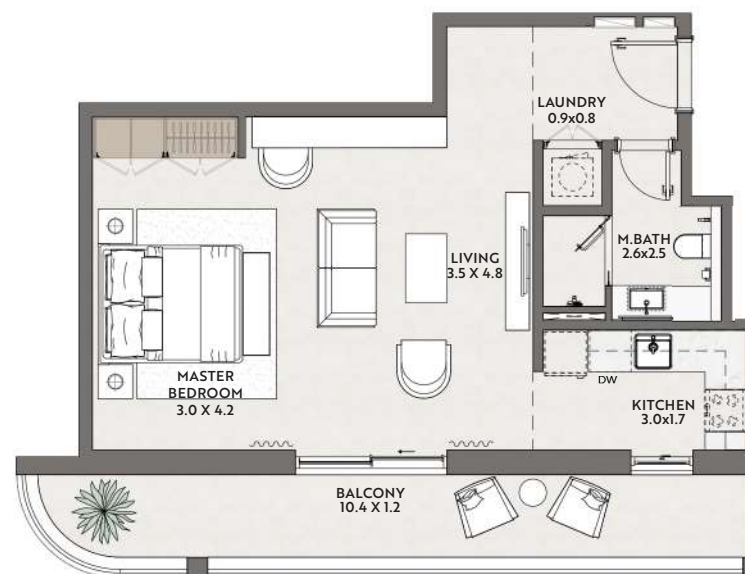
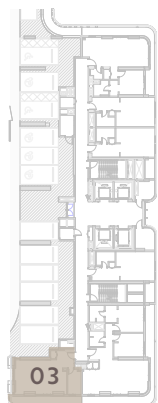
## STUDIO TYPE B-1

SUITE AREA	53 sq.m	575 sq.ft
BALCONY AREA	16 sq.m	174 sq.ft
TOTAL SELLABLE AREA	70 sq.m	749 sq.ft
UNIT NO.	103	

# Ceilo

## TOWER B

### 1<sup>st</sup> FLOOR



Dimensions on floor plans are approximate and some units are mirrored. Final dimensions and floor plans may vary and are subject to change without notice. The developer reserves the right to make revisions. Areas are measured in accordance with the Dubai Land department standards. Internal Furniture/ Equipment and Landscaping are not provided. Artistic renderings and images are for illustrative purpose only and are subject to change without notice.

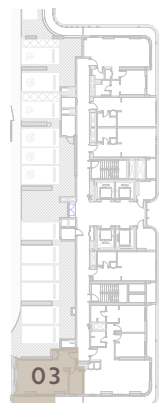
## STUDIO TYPE B-2

SUITE AREA	53 sq.m	575 sq.ft
BALCONY AREA	10 sq.m	103 sq.ft
TOTAL SELLABLE AREA	63 sq.m	678 sq.ft
UNIT NO.	203,303	

# Ceilo

## TOWER B

### 2<sup>ND</sup> FLOOR - 3<sup>RD</sup> FLOOR



Dimensions on floor plans are approximate and some units are mirrored. Final dimensions and floor plans may vary and are subject to change without notice. The developer reserves the right to make revisions. Areas are measured in accordance with the Dubai Land department standards. Internal Furniture/ Equipment and Landscaping are not provided. Artistic renderings and images are for illustrative purpose only and are subject to change without notice.

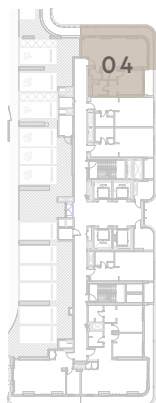
## 1 BEDROOM TYPE A-1

SUITE AREA	71 sq.m	769 sq.ft
BALCONY AREA	27 sq.m	293 sq.ft
TOTAL SELLABLE AREA	99 sq.m	1,062 sq.ft
UNIT NO.	104	

# Cello

## TOWER B

1<sup>st</sup> FLOOR



Dimensions on floor plans are approximate and some units are mirrored. Final dimensions and floor plans may vary and are subject to change without notice. The developer reserves the right to make revisions. Areas are measured in accordance with the Dubai Land department standards. Internal Furniture/ Equipment and Landscaping are not provided. Artistic renderings and images are for illustrative purpose only and are subject to change without notice.

# Cello

## TOWER B

### 1 BEDROOM TYPE A-2

SUITE AREA	72 sq.m	770 to 775 sq.ft
BALCONY AREA	14 sq.m	150 sq.ft
TOTAL SELLABLE AREA	86 sq.m	920 to 925 sq.ft

UNIT NO. 204,304,408,507,508,607,608,707,708,807,808,907,908,1007,1008,1107,1108,1207,1208,1307,1308,1407,1408,1507,1508,1607,1608,1707,1708,1807,1808,1907,1908,2007,2008,2107,2108,2207,2208,2304,2305

2<sup>nd</sup> FLOOR - 3<sup>rd</sup> FLOOR



4<sup>th</sup> FLOOR



5<sup>th</sup> FLOOR - 22<sup>nd</sup> FLOOR



23<sup>rd</sup> FLOOR



Dimensions on floor plans are approximate and some units are mirrored. Final dimensions and floor plans may vary and are subject to change without notice. The developer reserves the right to make revisions. Areas are measured in accordance with the Dubai Land department standards. Internal Furniture/ Equipment and Landscaping are not provided. Artistic renderings and images are for illustrative purpose only and are subject to change without notice.



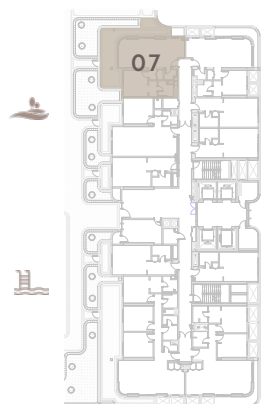
## 1 BEDROOM TYPE A-3

SUITE AREA	72 sq.m	773 sq.ft
BALCONY AREA	41 sq.m	446 sq.ft
TOTAL SELLABLE AREA	113 sq.m	1,218 sq.ft
UNIT NO.	407	

# Ceilo

## TOWER B

4<sup>TH</sup> FLOOR



Dimensions on floor plans are approximate and some units are mirrored. Final dimensions and floor plans may vary and are subject to change without notice. The developer reserves the right to make revisions. Areas are measured in accordance with the Dubai Land department standards. Internal Furniture/ Equipment and Landscaping are not provided. Artistic renderings and images are for illustrative purpose only and are subject to change without notice.

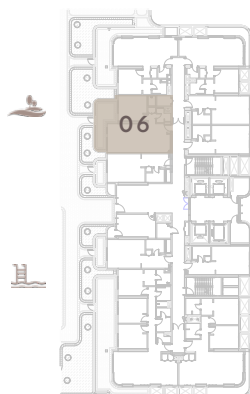
## 1 BEDROOM TYPE C-1

SUITE AREA	68 sq.m	733 sq.ft
BALCONY AREA	19 sq.m	199 sq.ft
TOTAL SELLABLE AREA	87 sq.m	933 sq.ft
UNIT NO.	406	

# Ceilo

## TOWER B

### 4<sup>TH</sup> FLOOR



Dimensions on floor plans are approximate and some units are mirrored. Final dimensions and floor plans may vary and are subject to change without notice. The developer reserves the right to make revisions. Areas are measured in accordance with the Dubai Land department standards. Internal Furniture/ Equipment and Landscaping are not provided. Artistic renderings and images are for illustrative purpose only and are subject to change without notice.

# Ceilo

## TOWER B

### 1 BEDROOM TYPE C-2

SUITE AREA	68 sq.m	732 sq.ft
BALCONY AREA	7 sq.m	72 sq.ft
TOTAL SELLABLE AREA	75 sq.m	804 sq.ft
UNIT NO.	506,606,706,806,906,1006,1106, 1206,1306,1406,1506,1606,1706,1806, 1906,2006,2106,2206,2303	

5<sup>th</sup> FLOOR - 22<sup>nd</sup> FLOOR



23<sup>rd</sup> FLOOR



Dimensions on floor plans are approximate and some units are mirrored. Final dimensions and floor plans may vary and are subject to change without notice. The developer reserves the right to make revisions. Areas are measured in accordance with the Dubai Land department standards. Internal Furniture/ Equipment and Landscaping are not provided. Artistic renderings and images are for illustrative purpose only and are subject to change without notice.



# Ceilo

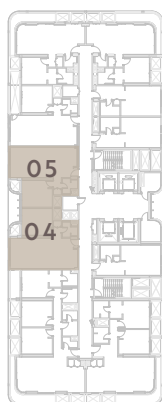
## TOWER B

### 1 BEDROOM TYPE C-3

SUITE AREA	68 sq.m	733 sq.ft
BALCONY AREA	-	-
TOTAL SELLABLE AREA	68 sq.m	733 sq.ft
UNIT NO.	504,505,604,605,704,705,804,805, 904,905,1004,1005,1104,1105,1204, 1205,1304,1305,1404,1405,1504,1505, 1604,1605,1704,1705,1804,1805,1904, 1905,2004,2005,2104,2105,2204, 2205,2302	

5<sup>th</sup> FLOOR - 22<sup>nd</sup> FLOOR

23<sup>rd</sup> FLOOR



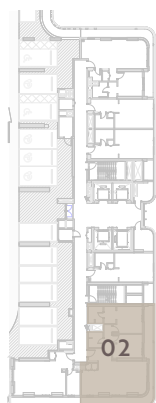
Dimensions on floor plans are approximate and some units are mirrored. Final dimensions and floor plans may vary and are subject to change without notice. The developer reserves the right to make revisions. Areas are measured in accordance with the Dubai Land department standards. Internal Furniture/ Equipment and Landscaping are not provided. Artistic renderings and images are for illustrative purpose only and are subject to change without notice.



## 2 BEDROOM TYPE A-1

SUITE AREA	109 sq.m	1,170 sq.ft
BALCONY AREA	34 sq.m	368 sq.ft
TOTAL SELLABLE AREA	143 sq.m	1,539 sq.ft
UNIT NO.	102	

1<sup>st</sup> FLOOR



Ceilo  
TOWER B



Dimensions on floor plans are approximate and some units are mirrored. Final dimensions and floor plans may vary and are subject to change without notice. The developer reserves the right to make revisions. Areas are measured in accordance with the Dubai Land department standards. Internal Furniture/ Equipment and Landscaping are not provided. Artistic renderings and images are for illustrative purpose only and are subject to change without notice.

## 2 BEDROOM TYPE A-2

SUITE AREA 109 sq.m 1,170 to 1,173 sq.ft

BALCONY AREA 15 sq.m 157 sq.ft

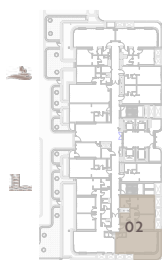
TOTAL SELLABLE AREA 123 to 124 sq.m 1,327 to 1,331 sq.ft

UNIT NO. 202,302,402,502,602,702,802,902,  
1002,1102,1202,1302,1402,1502,1602,  
1702,1802,1902,2002,2102,2202

2<sup>nd</sup> FLOOR - 3<sup>rd</sup> FLOOR



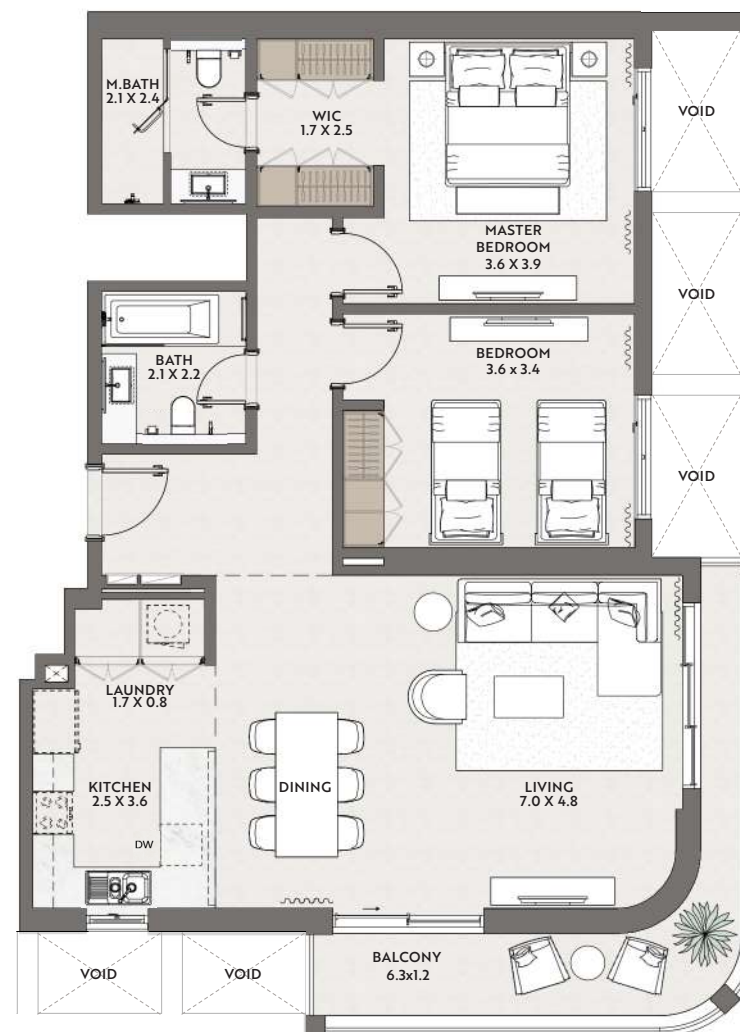
4<sup>th</sup> FLOOR



5<sup>th</sup> FLOOR - 22<sup>nd</sup> FLOOR



Ceilo  
TOWER B



Dimensions on floor plans are approximate and some units are mirrored. Final dimensions and floor plans may vary and are subject to change without notice. The developer reserves the right to make revisions. Areas are measured in accordance with the Dubai Land department standards. Internal Furniture/ Equipment and Landscaping are not provided. Artistic renderings and images are for illustrative purpose only and are subject to change without notice.

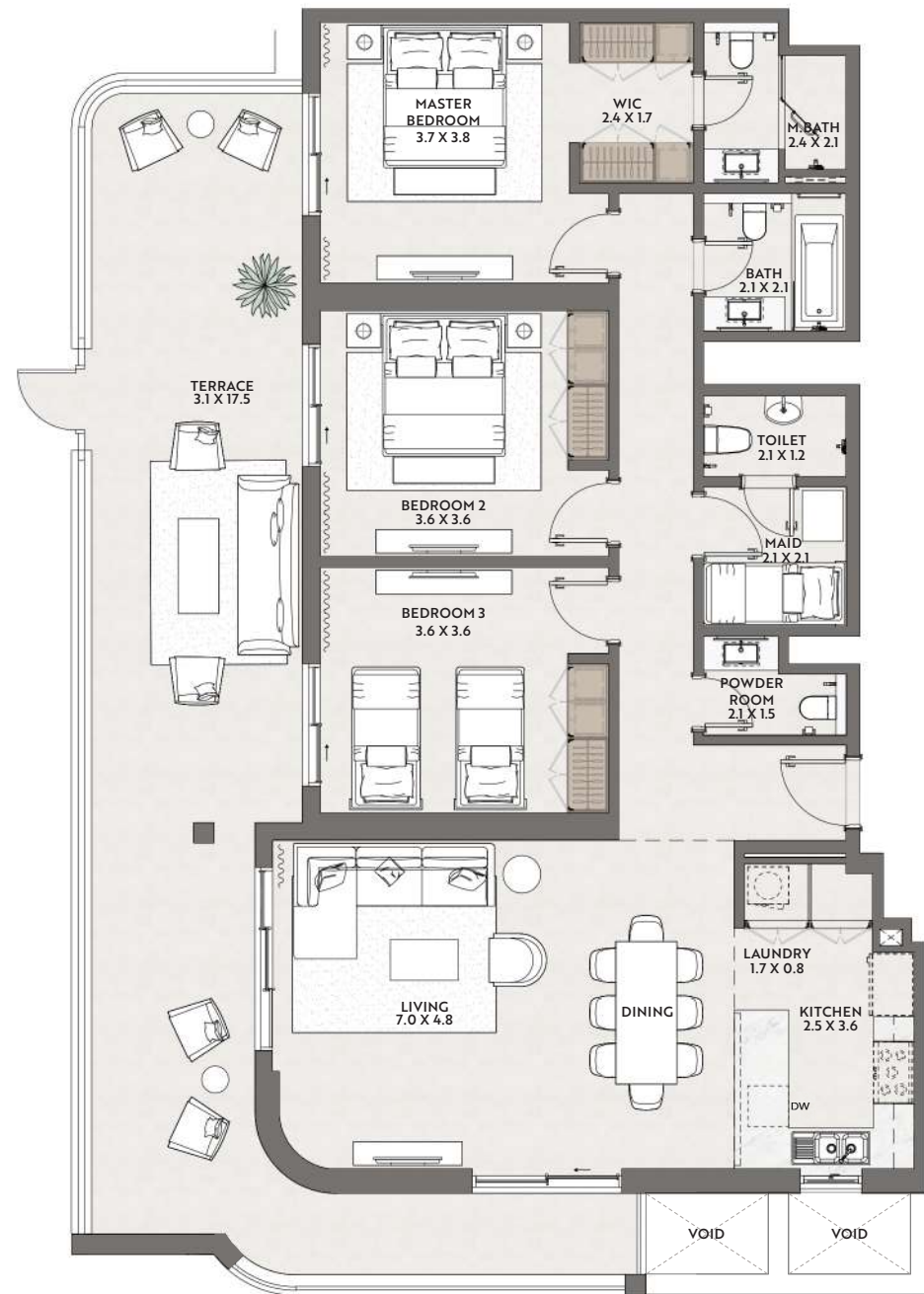
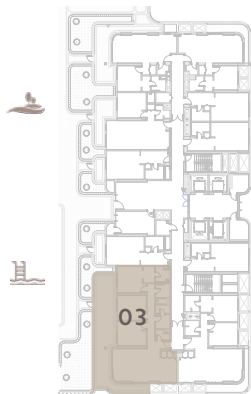
# Cello

## TOWER B

### 3 BEDROOM TYPE A-1

SUITE AREA	141 sq.m	1,522 sq.ft
BALCONY AREA	63 sq.m	673 sq.ft
TOTAL SELLABLE AREA	204 sq.m	2,195 sq.ft
UNIT NO.	403	

#### 4<sup>TH</sup> FLOOR



Dimensions on floor plans are approximate and some units are mirrored. Final dimensions and floor plans may vary and are subject to change without notice. The developer reserves the right to make revisions. Areas are measured in accordance with the Dubai Land department standards. Internal Furniture/ Equipment and Landscaping are not provided. Artistic renderings and images are for illustrative purpose only and are subject to change without notice.

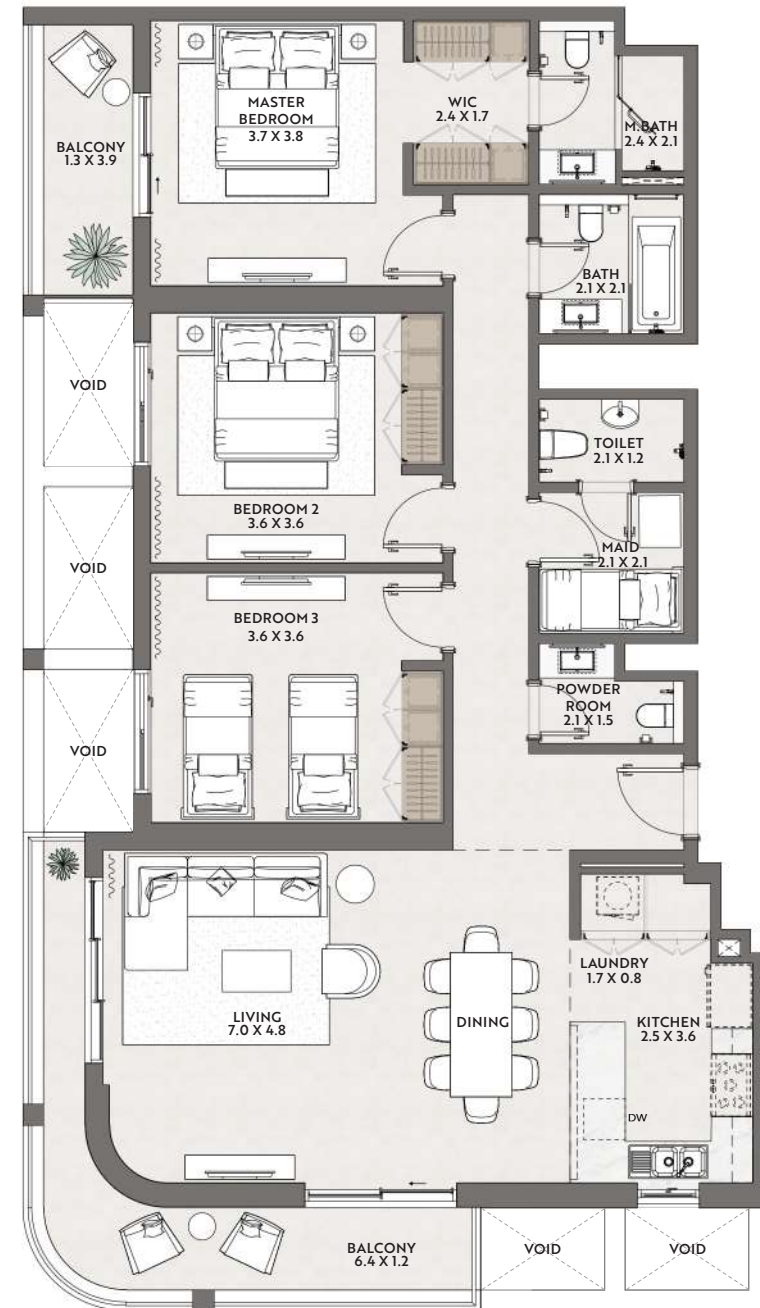
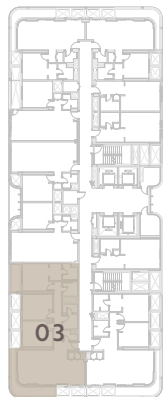
# Cello

## TOWER B

### 3 BEDROOM TYPE A-2

SUITE AREA	142 sq.m	1,525 sq.ft
BALCONY AREA	21 sq.m	230 sq.ft
TOTAL SELLABLE AREA	163 sq.m	1,755 sq.ft
UNIT NO.	503, 603, 703, 803, 903, 1003, 1103, 1203, 1303, 1403, 1503, 1603, 1703, 1803, 1903, 2003, 2103, 2203	

5<sup>th</sup> FLOOR - 22<sup>nd</sup> FLOOR



Dimensions on floor plans are approximate and some units are mirrored. Final dimensions and floor plans may vary and are subject to change without notice. The developer reserves the right to make revisions. Areas are measured in accordance with the Dubai Land department standards. Internal Furniture/ Equipment and Landscaping are not provided. Artistic renderings and images are for illustrative purpose only and are subject to change without notice.



# Cello

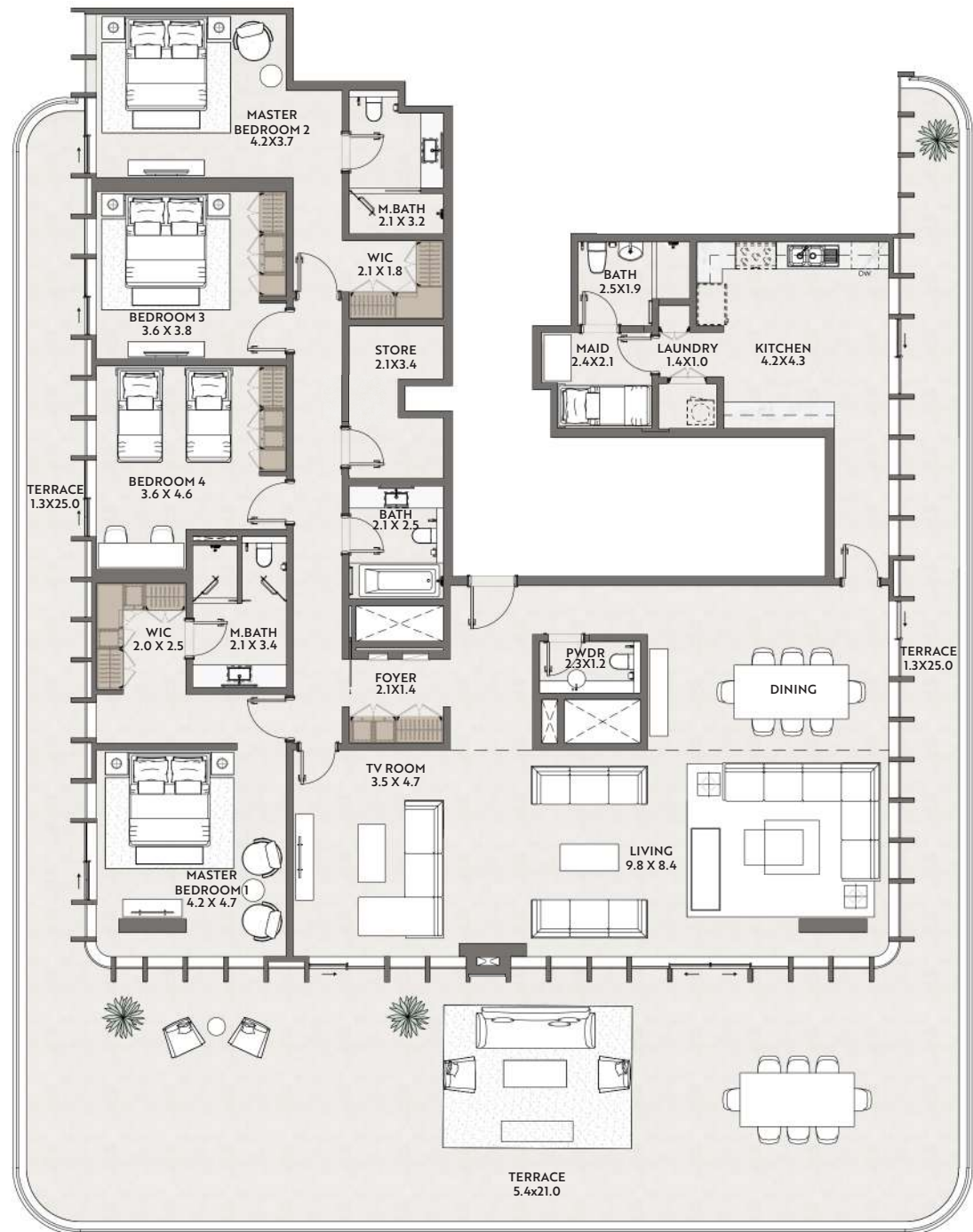
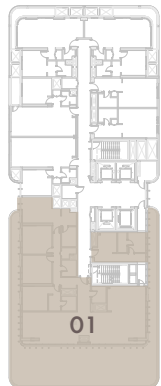
## TOWER B

### PENTHOUSE TYPE B-1

SUITE AREA	288 sq.m	3,103 sq.ft
BALCONY AREA	183 sq.m	1,970 sq.ft
TOTAL SELLABLE AREA	471 sq.m	5,072 sq.ft

UNIT NO. 2301

23<sup>rd</sup> FLOOR



Dimensions on floor plans are approximate and some units are mirrored. Final dimensions and floor plans may vary and are subject to change without notice. The developer reserves the right to make revisions. Areas are measured in accordance with the Dubai Land department standards. Internal Furniture/ Equipment and Landscaping are not provided. Artistic renderings and images are for illustrative purpose only and are subject to change without notice.

