

DARGLOBAL

AiDA

OCEANA

FACTSHEET



OVERLOOKING
THE *world*

MANSION

GROUND FLOOR

FIRST FLOOR

SECOND FLOOR

7-BED

VILLA	LV-100

Disclaimer: All pictures, plans, layouts, information, data and details included in this brochure are indicative only and may change at any time up to the final 'as built' status in accordance with final designs of the project, regulatory approvals and planning permissions. All accessories and interior finishes such as wallpaper, chandeliers, furniture, electronics, white goods, curtains, hard and soft landscaping, pavements, features, gym, swimming pool(s) and other elements displayed in the brochure, or within the show apartment or between the plot boundary and the unit, are not part of the unit and are shown for illustrative purposes only.



MANSION

GROUND FLOOR

FIRST FLOOR

SECOND FLOOR

7-BED			
VILLA	LV-100		
	SQM		SQFT
	1,793		19,302

Disclaimer: All pictures, plans, layouts, information, data and details included in this brochure are indicative only and may change at any time up to the final 'as built' status in accordance with final designs of the project, regulatory approvals and planning permissions. All accessories and interior finishes such as wallpaper, chandeliers, furniture, electronics, white goods, curtains, hard and soft landscaping, pavements, features, gym, swimming pool(s) and other elements displayed in the brochure, or within the show apartment or between the plot boundary and the unit, are not part of the unit and are shown for illustrative purposes only.



MANSION

GROUND FLOOR

FIRST FLOOR

SECOND FLOOR

7-BED

VILLA	LV-100	
	SQM	SQFT
	1,793	19,302

Disclaimer: All pictures, plans, layouts, information, data and details included in this brochure are indicative only and may change at any time up to the final 'as built' status in accordance with final designs of the project, regulatory approvals and planning permissions. All accessories and interior finishes such as wallpaper, chandeliers, furniture, electronics, white goods, curtains, hard and soft landscaping, pavements, features, gym, swimming pool(s) and other elements displayed in the brochure, or within the show apartment or between the plot boundary and the unit, are not part of the unit and are shown for illustrative purposes only.



MANSION
FEATURES &
AMENITIES

General:

External Glazing	Double glazed windows
Boundary Wall	Concrete boundary wall on the sides and rear
Outdoor Space	Area between side and rear boundary wall to the building will be levelled / graded
Swimming Pool	Swimming pool
Driveway / Parking	Precast concrete pavers

Foyer:

Floor	Marble
Skirting	Marble
Walls	Plastered walls with emulsion paint
Ceiling	Gypsum ceiling with emulsion paint

Living Room / Dining:

Floor	Marble
Skirting	Marble
Walls	Plastered walls with emulsion paint
Ceiling	Gypsum ceiling with emulsion paint

Show Kitchen:

Floor	Marble
Skirting	Marble
Walls	Wall panels
Ceiling	Gypsum ceiling with emulsion paint
Countertop	Marble or equivalent with backsplash
Cabinets	Branded kitchen
Appliances	High-end stainless steel sink, built-in appliances (Fridge, Oven, Hob, Hood, Microwave and Dishwasher) Brand: Miele or Equivalent

Service Kitchen:

Floor	Porcelain slabs, marble look or equivalent tile
Skirting	Porcelain tile
Walls	Ceramic or porcelain tile
Ceiling	Gypsum ceiling with emulsion paint
Countertop	Solid surface or equivalent
Cabinets	Joinery with lacquered / laminate finish
Appliances	High-end stainless steel sink, Fridge, Freezer, Oven, Hob, Hood, Dishwasher, and Washing Machine Brand: Miele or Equivalent

Bedrooms:

Floor	Porcelain slabs with wood look or Equivalent
Skirting	Porcelain slabs with wood look or Equivalent
Walls	Plastered walls with emulsion paint
Ceiling	Gypsum ceiling with emulsion paint
Joinery	Branded wardrobes

Bathrooms:

Floor	Porcelain marble look or equivalent
Walls	Porcelain marble look or equivalent
Ceiling	Moisture resistant gypsum ceiling finished with paint
Countertop	Marble or high quality solid surface
Joinery	Joinery with lacquered / laminate finish
Sanitary fixtures	HansGrohe, Grohe, Duravit or equivalent
Sanitaryware	HansGrohe, Grohe, Duravit, Kohler or equivalent
Mirror	Included

Disclaimer: All pictures, plans, layouts, information, data and details included in this brochure are indicative only and may change at any time up to the final ‘as built’ status in accordance with final designs of the project, regulatory approvals and planning permissions. All accessories and interior finishes such as wallpaper, chandeliers, furniture, electronics, white goods, curtains, hard and soft landscaping, pavements, features, gym, swimming pool(s) and other elements displayed in the brochure, or within the show apartment or between the plot boundary and the unit, are not part of the unit and are shown for illustrative purposes only.

VILLA

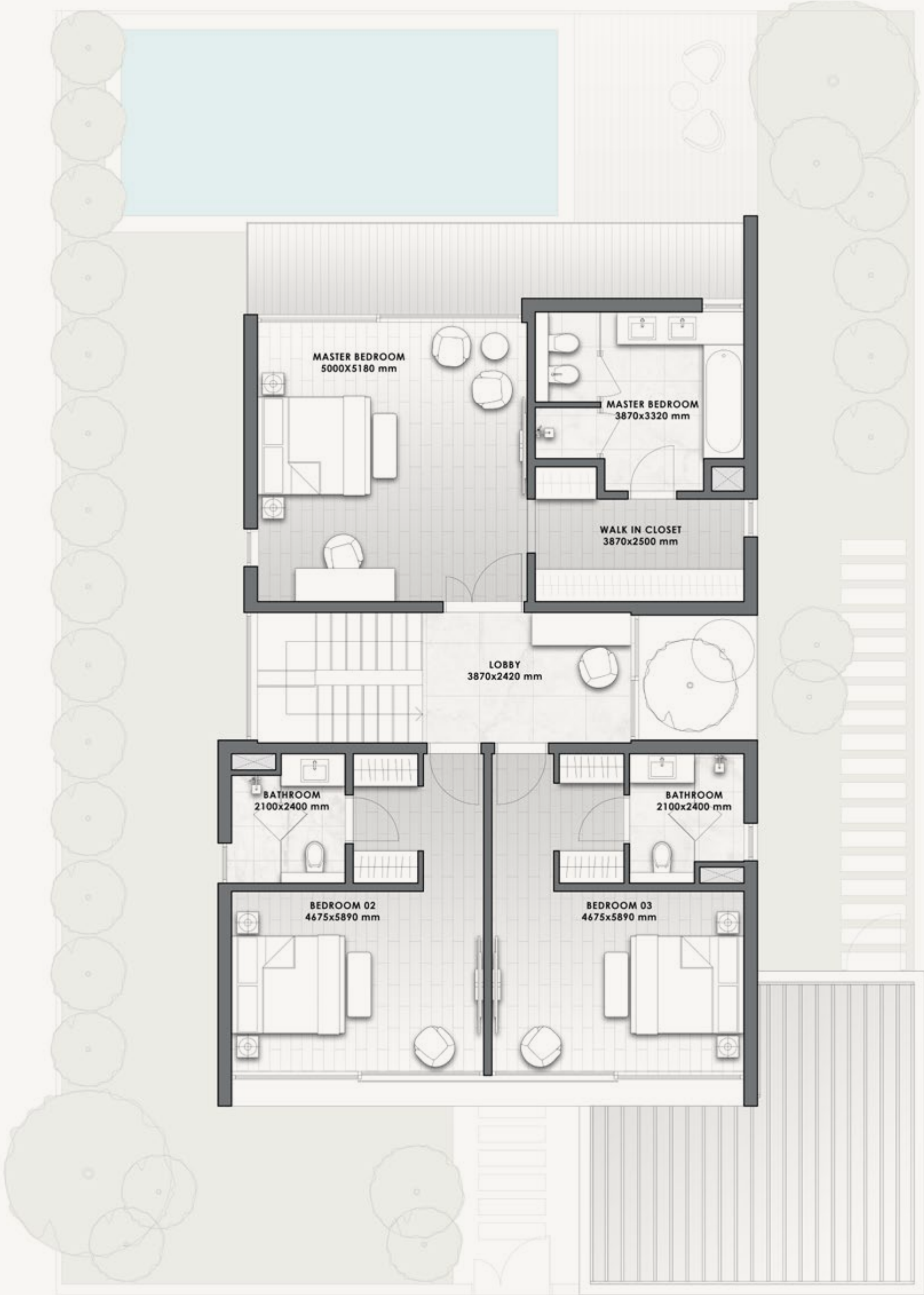
4-BED

VILLA	V-33A	
	SQM	SQFT
	288	3,100

Disclaimer: All pictures, plans, layouts, information, data and details included in this brochure are indicative only and may change at any time up to the final 'as built' status in accordance with final designs of the project, regulatory approvals and planning permissions. All accessories and interior finishes such as wallpaper, chandeliers, furniture, electronics, white goods, curtains, hard and soft landscaping, pavements, features, gym, swimming pool(s) and other elements displayed in the brochure, or within the show apartment or between the plot boundary and the unit, are not part of the unit and are shown for illustrative purposes only.



GROUND FLOOR



FIRST FLOOR

VILLA FEATURES & AMENITIES

General:

External Glazing	Double glazed windows
Boundary Wall	Concrete boundary wall on the sides and rear
Outdoor Space	Area between side and rear boundary wall to the building will be levelled / graded
Driveway / Parking	Precast concrete pavers

Foyer:

Floor	Porcelain marble look or equivalent
Skirting	Porcelain marble look or equivalent
Walls	Plastered walls with emulsion paint
Ceiling	Gypsum ceiling with emulsion paint

Living Room / Dining:

Floor	Porcelain marble look or equivalent
Skirting	Porcelain marble look or equivalent
Walls	Plastered walls with emulsion paint
Ceiling	Paint finish

Kitchen:

Floor	Porcelain or equivalent
Skirting	Porcelain or equivalent
Walls	Paint and porcelain or equivalent
Ceiling	Gypsum ceiling with emulsion paint
Countertop	Solid surface or equivalent
Cabinets	Joinery with lacquered or laminate finish
Appliances	Stainless steel sink, built-in appliances (Fridge, Oven, Hob, Hood, Dishwasher, and Washing Machine) Brand: Siemens / Bosch or equivalent

Bedrooms:

Floor	Porcelain or equivalent
Skirting	Porcelain or equivalent
Walls	Plastered walls with emulsion paint
Ceiling	Paint finish
Joinery	Built-In joinery with lacquered or laminate finish

Bathrooms:

Floor	Porcelain marble look or equivalent
Walls	Porcelain marble look or equivalent
Ceiling	Moisture resistant gypsum ceiling finished with paint
Countertop	Solid surface or equivalent
Joinery	Joinery with lacquered / laminate finish
Sanitary fixtures	Standard sanitary fixtures and accessories
Sanitaryware	Standard sanitary ware and accessories
Mirror	Included

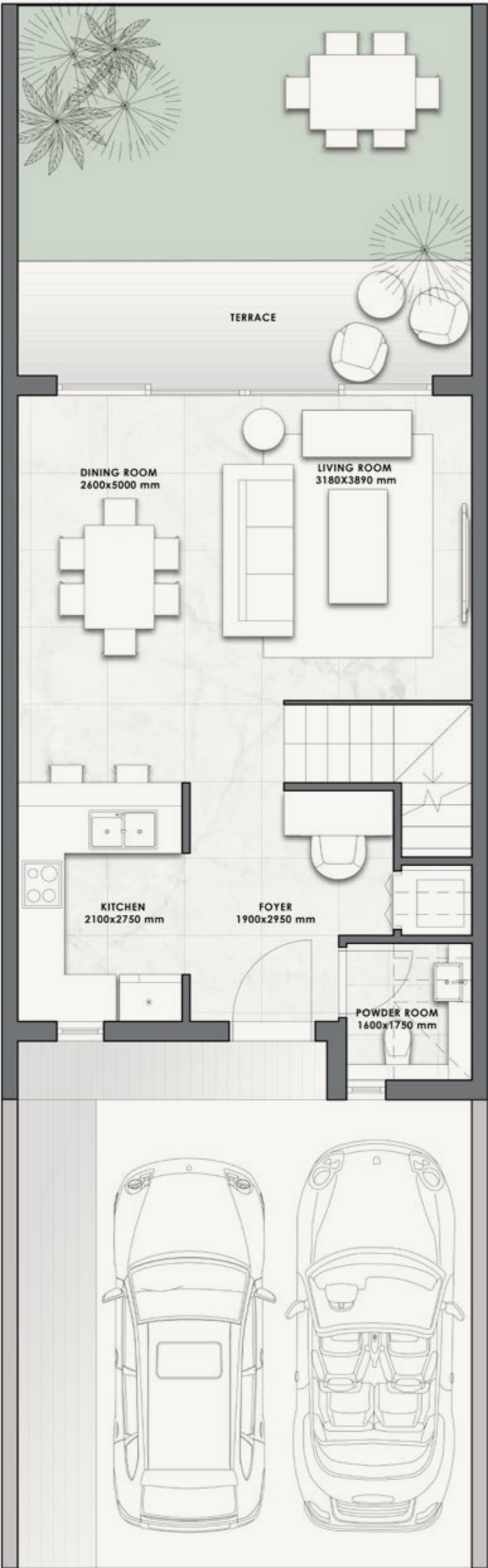
Disclaimer: All pictures, plans, layouts, information, data and details included in this brochure are indicative only and may change at any time up to the final ‘as built’ status in accordance with final designs of the project, regulatory approvals and planning permissions. All accessories and interior finishes such as wallpaper, chandeliers, furniture, electronics, white goods, curtains, hard and soft landscaping, pavements, features, gym, swimming pool(s) and other elements displayed in the brochure, or within the show apartment or between the plot boundary and the unit, are not part of the unit and are shown for illustrative purposes only.

ATTACHED VILLA

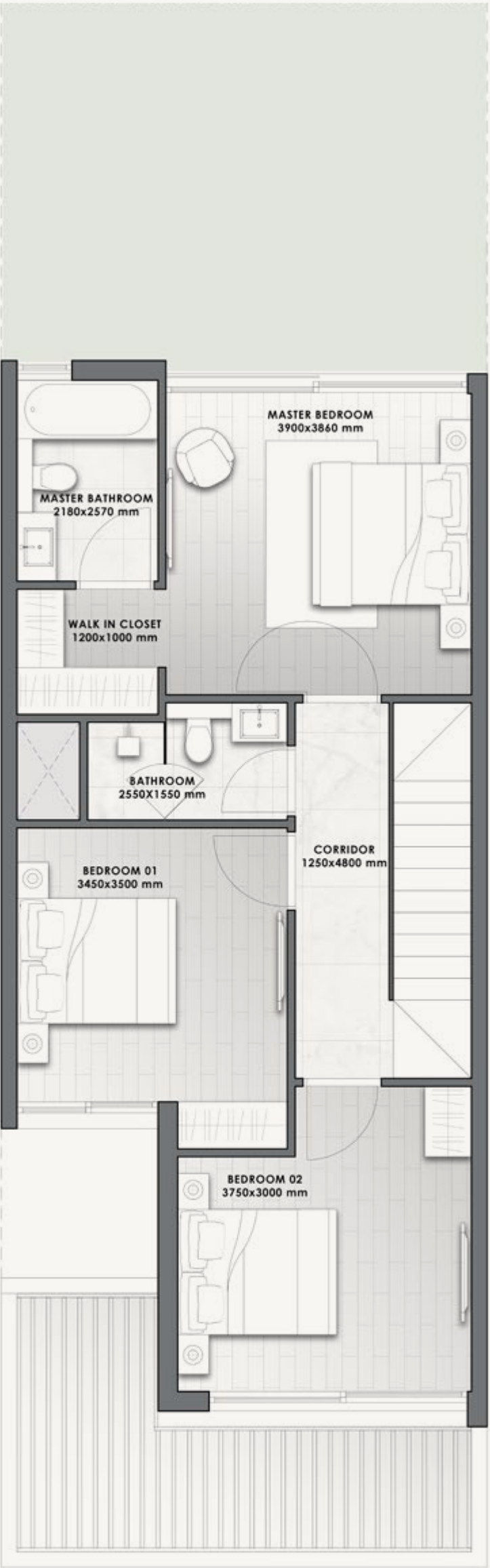
3-BED

VILLA	V-12M	
	SQM	SQFT
	125	1,345

Disclaimer: All pictures, plans, layouts, information, data and details included in this brochure are indicative only and may change at any time up to the final 'as built' status in accordance with final designs of the project, regulatory approvals and planning permissions. All accessories and interior finishes such as wallpaper, chandeliers, furniture, electronics, white goods, curtains, hard and soft landscaping, pavements, features, gym, swimming pool(s) and other elements displayed in the brochure, or within the show apartment or between the plot boundary and the unit, are not part of the unit and are shown for illustrative purposes only.



GROUND FLOOR



FIRST FLOOR

ATTACHED VILLA FEATURES & AMENITIES

General:

External Glazing	Double glazed windows
Boundary Wall	Concrete boundary wall on the sides and rear
Outdoor Space	Area between side and rear boundary wall to the building will be levelled / graded
Driveway / Parking	Precast concrete pavers

Foyer:

Floor	Porcelain or equivalent
Skirting	Porcelain or equivalent
Walls	Plastered walls with emulsion paint
Ceiling	Gypsum ceiling with emulsion paint

Living Room / Dining:

Floor	Porcelain or equivalent
Skirting	Porcelain or equivalent
Walls	Plastered walls with emulsion paint
Ceiling	Paint finish

Kitchen:

Floor	Porcelain or equivalent
Skirting	Porcelain or equivalent
Walls	Paint and porcelain or equivalent
Ceiling	Gypsum ceiling with emulsion paint
Countertop	Solid surface or equivalent
Cabinets	Joinery with lacquered or laminate finish
Appliances	Stainless steel sink. Provision for hook-up of appliances.

Bedrooms:

Floor	Porcelain or equivalent
Skirting	Porcelain or equivalent
Walls	Plastered walls with emulsion paint
Ceiling	Paint finish
Joinery	Built-In joinery with lacquered or laminate finish

Bathrooms:

Floor	Porcelain marble look or equivalent
Walls	Porcelain marble look or equivalent
Ceiling	Moisture resistant gypsum ceiling finished with paint
Countertop	Solid surface or equivalent
Joinery	Joinery with lacquered or laminate finish
Sanitary fixtures	Standard sanitary fixtures and accessories
Sanitaryware	Standard sanitary ware and accessories
Mirror	Included

Disclaimer: All pictures, plans, layouts, information, data and details included in this brochure are indicative only and may change at any time up to the final ‘as built’ status in accordance with final designs of the project, regulatory approvals and planning permissions. All accessories and interior finishes such as wallpaper, chandeliers, furniture, electronics, white goods, curtains, hard and soft landscaping, pavements, features, gym, swimming pool(s) and other elements displayed in the brochure, or within the show apartment or between the plot boundary and the unit, are not part of the unit and are shown for illustrative purposes only.

AIDA
OCEANA

PAYMENT PLAN

20%	10%	10%	
DOWN PAYMENT	2 nd INSTALLMENT	3 rd INSTALLMENT	
Immediate	July 31, 2023	February 28, 2024	
10%	10%	10%	30%
4 th INSTALLMENT	5 th INSTALLMENT	6 th INSTALLMENT	7 th INSTALLMENT
July 31, 2024	Upon casting the roof slab	Upon finishing the façade	On obtaining Building Completion Certificate

BANK	CURRENCY	ACCOUNT DETAILS
SOHAR ISLAMIC	OMR	DAR ALARKAN PROPERTY DEVELOPMENT SPC Acc#: 708-01-0027016-01 Swift Code: BSHROMRUISL

AIDA

Literally, above and beyond



DARGLOBAL

darglobal.co.uk