

BURJ KHALIFA

RESIDENCES

FLOOR PLANS

EMAAR

BURJ KHALIFA

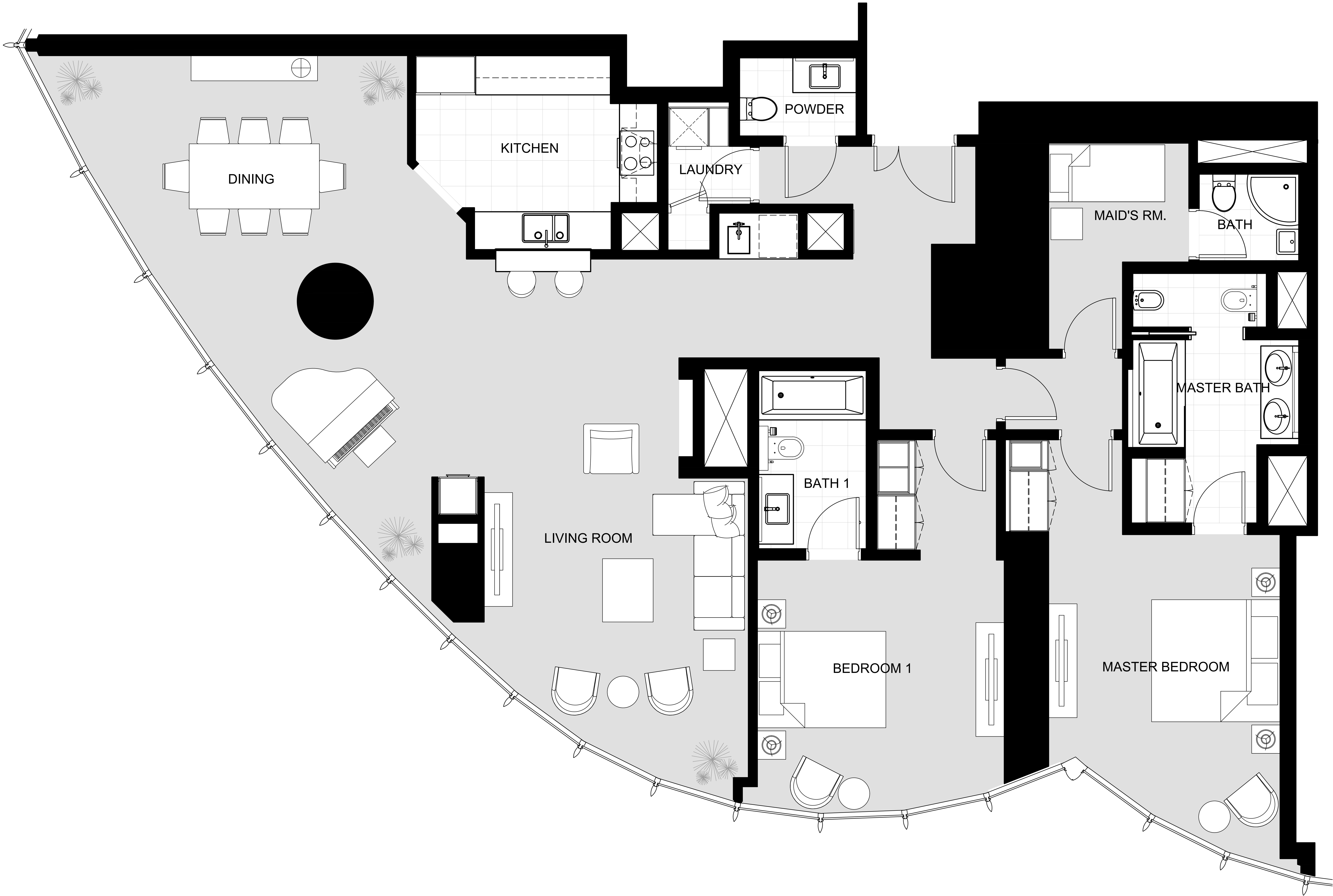
RESIDENCES

2 BEDROOM APARTMENT

UNIT NO.	LOC. CODE	TOTAL AREA	
9122	Burj Khalifa Zone 4-91-9102	189.15 SQ.M.	2,036 SQ.FT

Room Areas in Square Meter

- Living = 24.4 M²
- Dining = 33.1 M²
- Kitchen = 9.7 M²
- Master Bedroom = 19.0 M²
- Bedroom 1 = 18.9 M²
- Master Bathroom = 9.0 M²
- Bathroom 1 = 4.8 M²
- Powder = 2.3 M²
- Laundry = 2.4 M²
- Maid = 5.8 M²
- Maid's Bath = 2.2 M²



FLOOR PLAN 1. All dimensions are in imperial and metric, and measured from finish to finish excluding construction tolerances. 2. All materials, dimensions, and drawings are approximate only. 3. Information is subject to change without notice, at developer's absolute discretion. 4. Actual area may vary from the stated area. 5. Drawings not to scale. 6. All images used are for illustrative purposes only and do not represent the actual size, features, specifications, fittings, and furnishings. 7. The developer reserves the right to make revisions / alterations, at it's absolute discretion, without any liability whatsoever.

BURJ KHALIFA

RESIDENCES

2 BEDROOM APARTMENT

UNIT NO.	LOC. CODE	TOTAL AREA	
9126	Burj Khalifa Zone 4-91-9106	188.87 SQ.M.	2,033 SQ.FT

Room Areas in Square Meter

- Living = 28.7 M²
- Dining = 37.0 M²
- Kitchen = 13.8 M²
- Master Bedroom = 24.0 M²
- Bedroom 1 = 18.7 M²
- Master Bathroom = 9.9 M²
- Bathroom 1 = 5.7 M²
- Powder = 3.0 M²
- Laundry = 4.8 M²
- Maid = 0.0 M²
- Maid's Bath = 0.0 M²



FLOOR PLAN 1. All dimensions are in imperial and metric, and measured from finish to finish excluding construction tolerances. 2. All materials, dimensions, and drawings are approximate only. 3. Information is subject to change without notice, at developer's absolute discretion. 4. Actual area may vary from the stated area. 5. Drawings not to scale. 6. All images used are for illustrative purposes only and do not represent the actual size, features, specifications, fittings, and furnishings. 7. The developer reserves the right to make revisions / alterations, at it's absolute discretion, without any liability whatsoever.

BURJ KHALIFA

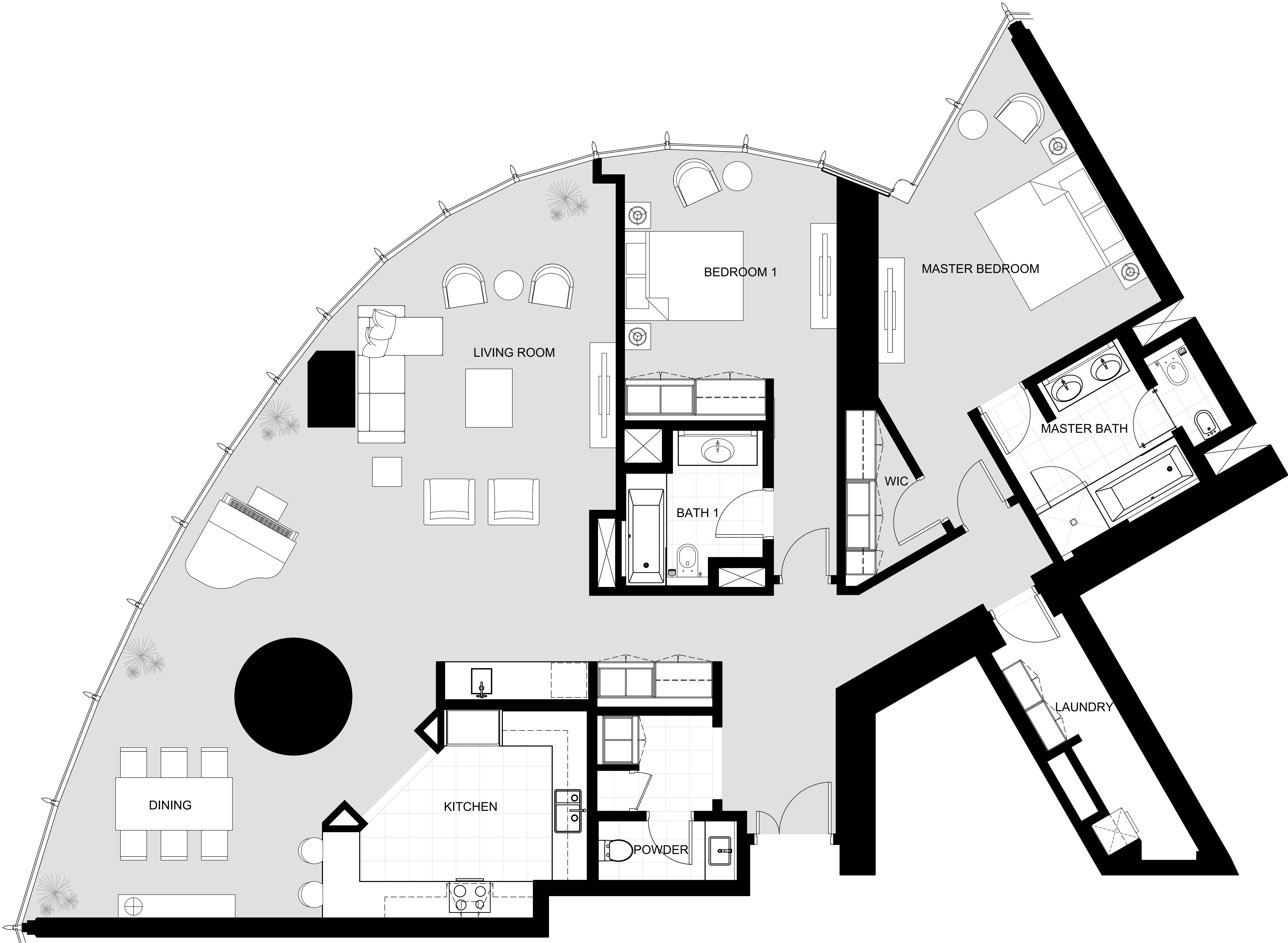
RESIDENCES

2 BEDROOM APARTMENT

UNIT NO.	LOC. CODE	TOTAL AREA	
10422	Burj Khalifa Zone 4-104-10401	195.84 SQ.M.	2,108 SQ.FT

Room Areas in Square Meter

- Living = 38.6 M²
- Dining = 29.0 M²
- Kitchen = 13.2 M²
- Master Bedroom = 24.5 M²
- Bedroom 1 = 19.5 M²
- Master Bathroom = 9.3 M²
- Bathroom 1 = 5.3 M²
- Powder = 2.4 M²
- Laundry = 6.1 M²
- Maid = 0.0 M²
- Maid's Bath = 0.0 M²



FLOOR PLAN 1. All dimensions are in imperial and metric, and measured from finish to finish excluding construction tolerances. 2. All materials, dimensions, and drawings are approximate only. 3. Information is subject to change without notice, at developer's absolute discretion. 4. Actual area may vary from the stated area. 5. Drawings not to scale. 6. All images used are for illustrative purposes only and do not represent the actual size, features, specifications, fittings, and furnishings. 7. The developer reserves the right to make revisions / alterations, at it's absolute discretion, without any liability whatsoever.

BURJ KHALIFA

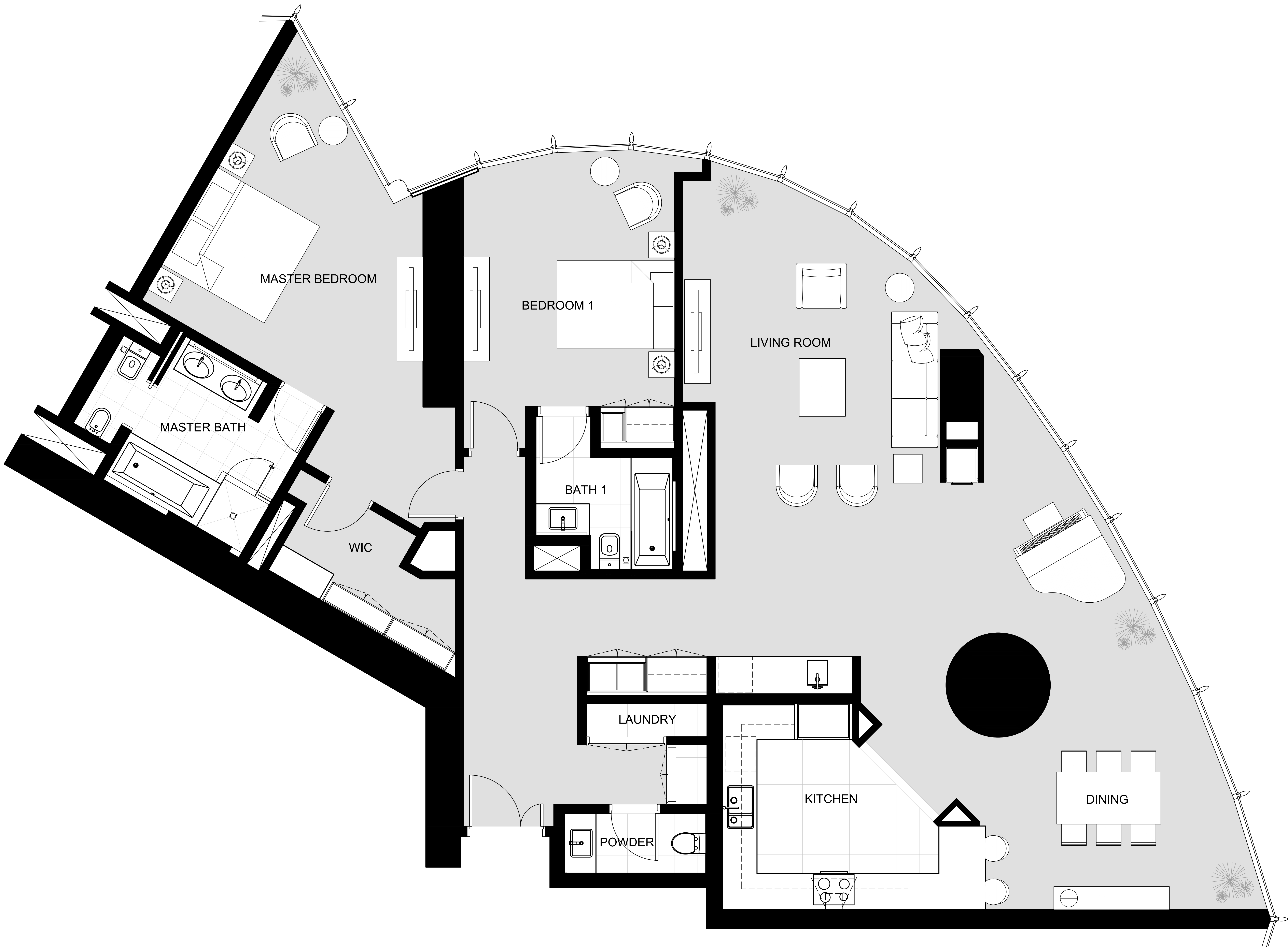
RESIDENCES

2 BEDROOM APARTMENT

UNIT NO.	LOC. CODE	TOTAL AREA	
10423	Burj Khalifa Zone 4-104-10402	195.84 SQ.M.	2,108 SQ.FT

Room Areas in Square Meter

Living = 35.0 M²
Dining = 30.2 M²
Kitchen = 13.4 M²
Master Bedroom = 28.3 M²
Bedroom 1 = 17.6 M²
Master Bathroom = 9.3 M²
Bathroom 1 = 4.8 M²
Powder = 2.5 M²
Laundry = 3.8 M²
Maid = 0.0 M²
Maid's Bath = 0.0 M²



BURJ KHALIFA

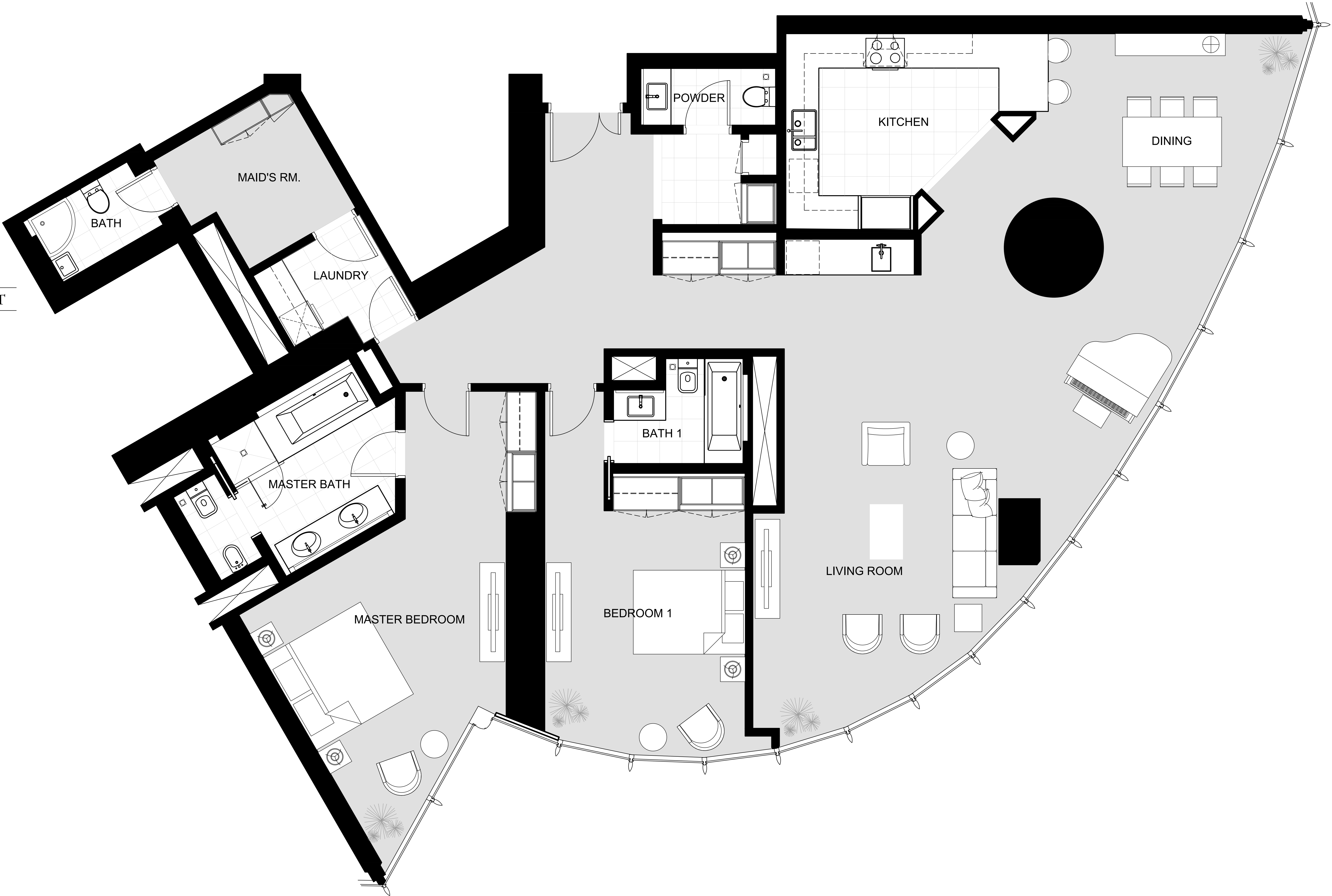
RESIDENCES

2 BEDROOM APARTMENT

UNIT NO.	LOC. CODE	TOTAL AREA	
10424	Burj Khalifa Zone 4-104-10403	219.07 SQ.M.	2,358 SQ.FT

Room Areas in Square Meter

- Living = 36.0 M²
- Dining = 29.2 M²
- Kitchen = 14.0 M²
- Master Bedroom = 23.7 M²
- Bedroom 1 = 20.1 M²
- Master Bathroom = 10.0 M²
- Bathroom 1 = 4.0 M²
- Powder = 2.5 M²
- Laundry = 4.0 M²
- Maid = 6.5 M²
- Maid's Bath = 3.0 M²



FLOOR PLAN 1. All dimensions are in imperial and metric, and measured from finish to finish excluding construction tolerances. 2. All materials, dimensions, and drawings are approximate only. 3. Information is subject to change without notice, at developer's absolute discretion. 4. Actual area may vary from the stated area. 5. Drawings not to scale. 6. All images used are for illustrative purposes only and do not represent the actual size, features, specifications, fittings, and furnishings. 7. The developer reserves the right to make revisions / alterations, at it's absolute discretion, without any liability whatsoever.

BURJ KHALIFA

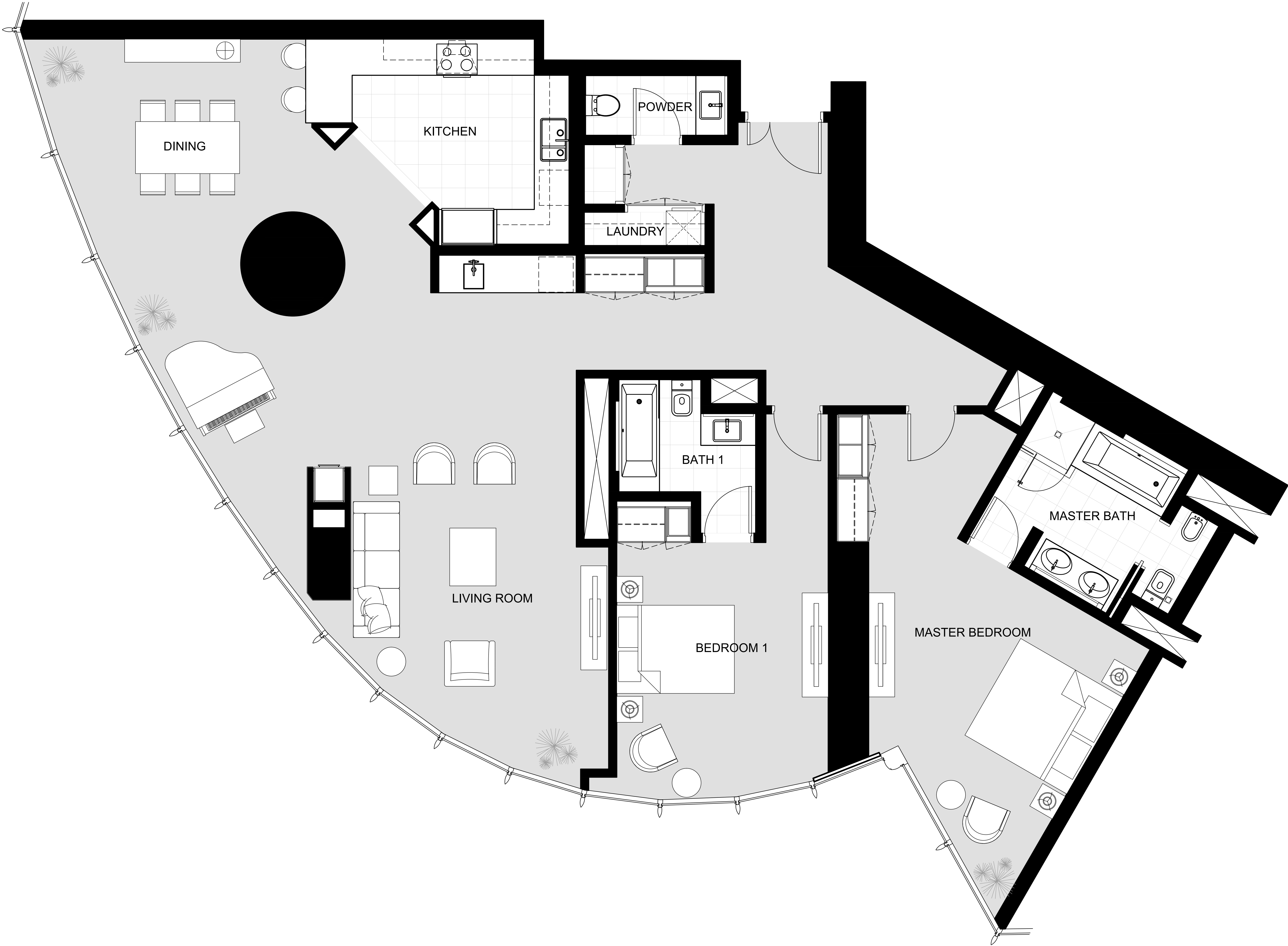
RESIDENCES

2 BEDROOM APARTMENT

UNIT NO.	LOC. CODE	TOTAL AREA	
10425	Burj Khalifa Zone 4-104-10404	206.06 SQ.M.	2,218 SQ.FT

Room Areas in Square Meter

- Living = 34.8 M²
- Dining = 30.5 M²
- Kitchen = 13.0 M²
- Master Bedroom = 24.3 M²
- Bedroom 1 = 19.2 M²
- Master Bathroom = 9.3 M²
- Bathroom 1 = 4.8 M²
- Powder = 2.5 M²
- Laundry = 3.9 M²
- Maid = 0.0 M²
- Maid's Bath = 0.0 M²



FLOOR PLAN 1. All dimensions are in imperial and metric, and measured from finish to finish excluding construction tolerances. 2. All materials, dimensions, and drawings are approximate only. 3. Information is subject to change without notice, at developer's absolute discretion. 4. Actual area may vary from the stated area. 5. Drawings not to scale. 6. All images used are for illustrative purposes only and do not represent the actual size, features, specifications, fittings, and furnishings. 7. The developer reserves the right to make revisions / alterations, at it's absolute discretion, without any liability whatsoever.

BURJ KHALIFA

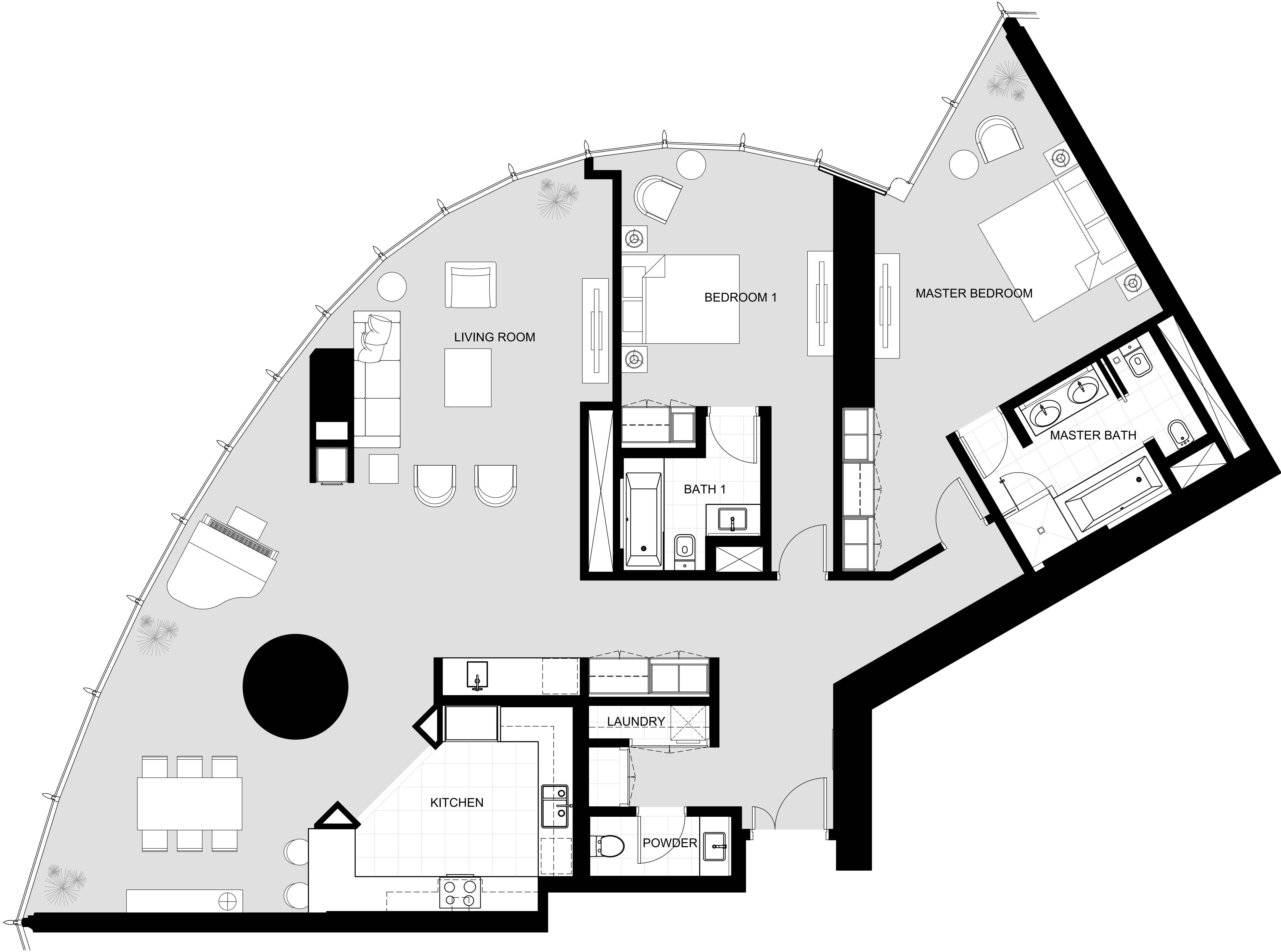
RESIDENCES

2 BEDROOM APARTMENT

UNIT NO.	LOC. CODE	TOTAL AREA	
10426	Burj Khalifa Zone 4-104-10405	195.84 SQ.M.	2,108 SQ.FT

Room Areas in Square Meter

- Living = 36.6 M²
- Dining = 28.6 M²
- Kitchen = 13.0 M²
- Master Bedroom = 25.2 M²
- Bedroom 1 = 20.0 M²
- Master Bathroom = 9.2 M²
- Bathroom 1 = 4.8 M²
- Powder = 2.5 M²
- Laundry = 3.8 M²
- Maid = 0.0 M²
- Maid's Bath = 0.0 M²



FLOOR PLAN 1. All dimensions are in imperial and metric, and measured from finish to finish excluding construction tolerances. 2. All materials, dimensions, and drawings are approximate only. 3. Information is subject to change without notice, at developer's absolute discretion. 4. Actual area may vary from the stated area. 5. Drawings not to scale. 6. All images used are for illustrative purposes only and do not represent the actual size, features, specifications, fittings, and furnishings. 7. The developer reserves the right to make revisions / alterations, at it's absolute discretion, without any liability whatsoever.

BURJ KHALIFA

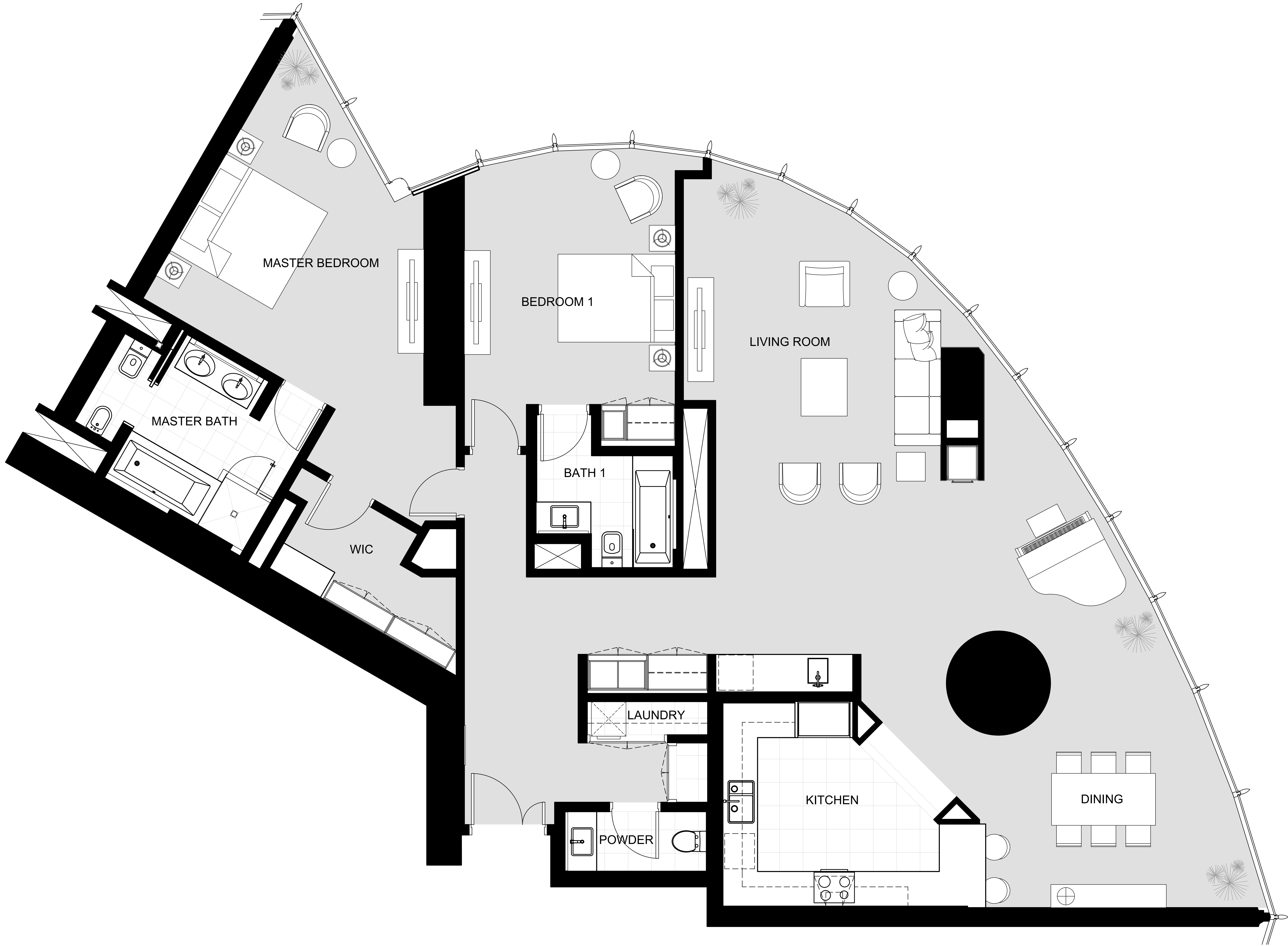
RESIDENCES

2 BEDROOM APARTMENT

UNIT NO.	LOC. CODE	TOTAL AREA	
10523	Burj Khalifa Zone 4-105-10502	195.84 SQ.M.	2,108 SQ.FT

Room Areas in Square Meter

Living = 35.0 M²
Dining = 30.2 M²
Kitchen = 13.4 M²
Master Bedroom = 28.3 M²
Bedroom 1 = 17.6 M²
Master Bathroom = 9.3 M²
Bathroom 1 = 4.8 M²
Powder = 2.5 M²
Laundry = 3.8 M²
Maid = 0.0 M²
Maid's Bath = 0.0 M²



FLOOR PLAN 1. All dimensions are in imperial and metric, and measured from finish to finish excluding construction tolerances. 2. All materials, dimensions, and drawings are approximate only. 3. Information is subject to change without notice, at developer's absolute discretion. 4. Actual area may vary from the stated area. 5. Drawings not to scale. 6. All images used are for illustrative purposes only and do not represent the actual size, features, specifications, fittings, and furnishings. 7. The developer reserves the right to make revisions / alterations, at it's absolute discretion, without any liability whatsoever.

BURJ KHALIFA

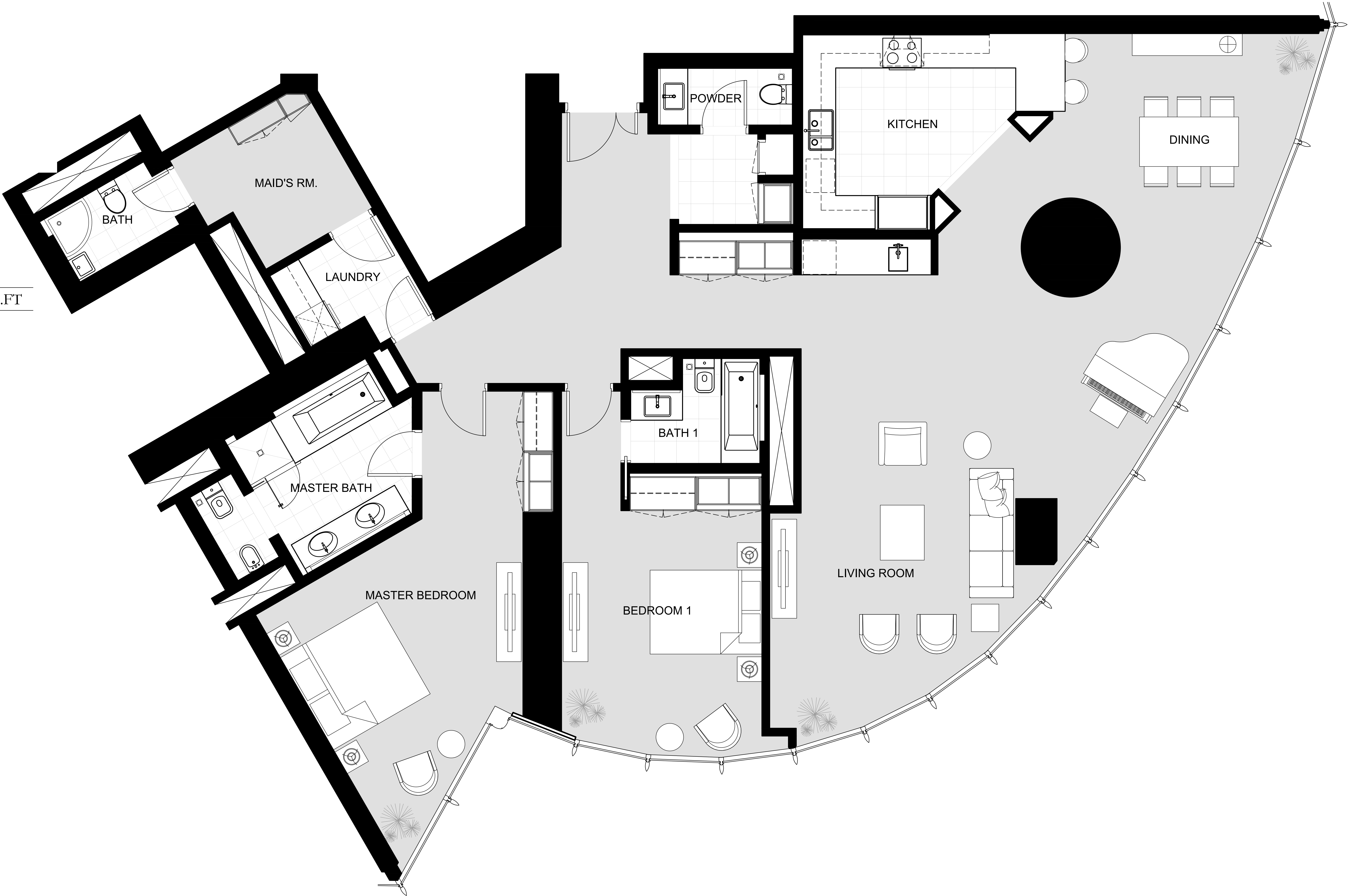
RESIDENCES

2 BEDROOM APARTMENT

UNIT NO.	LOC. CODE	TOTAL AREA	
10524	Burj Khalifa Zone 4-105-10503	219.07 SQ.M.	2,358 SQ.FT

Room Areas in Square Meter

- Living = 36.0 M²
- Dining = 29.2 M²
- Kitchen = 14.0 M²
- Master Bedroom = 23.7 M²
- Bedroom 1 = 20.1 M²
- Master Bathroom = 10.0 M²
- Bathroom 1 = 4.0 M²
- Powder = 2.5 M²
- Laundry = 4.0 M²
- Maid = 6.5 M²
- Maid's Bath = 3.0 M²



FLOOR PLAN 1. All dimensions are in imperial and metric, and measured from finish to finish excluding construction tolerances. 2. All materials, dimensions, and drawings are approximate only. 3. Information is subject to change without notice, at developer's absolute discretion. 4. Actual area may vary from the stated area. 5. Drawings not to scale. 6. All images used are for illustrative purposes only and do not represent the actual size, features, specifications, fittings, and furnishings. 7. The developer reserves the right to make revisions / alterations, at it's absolute discretion, without any liability whatsoever.

BURJ KHALIFA

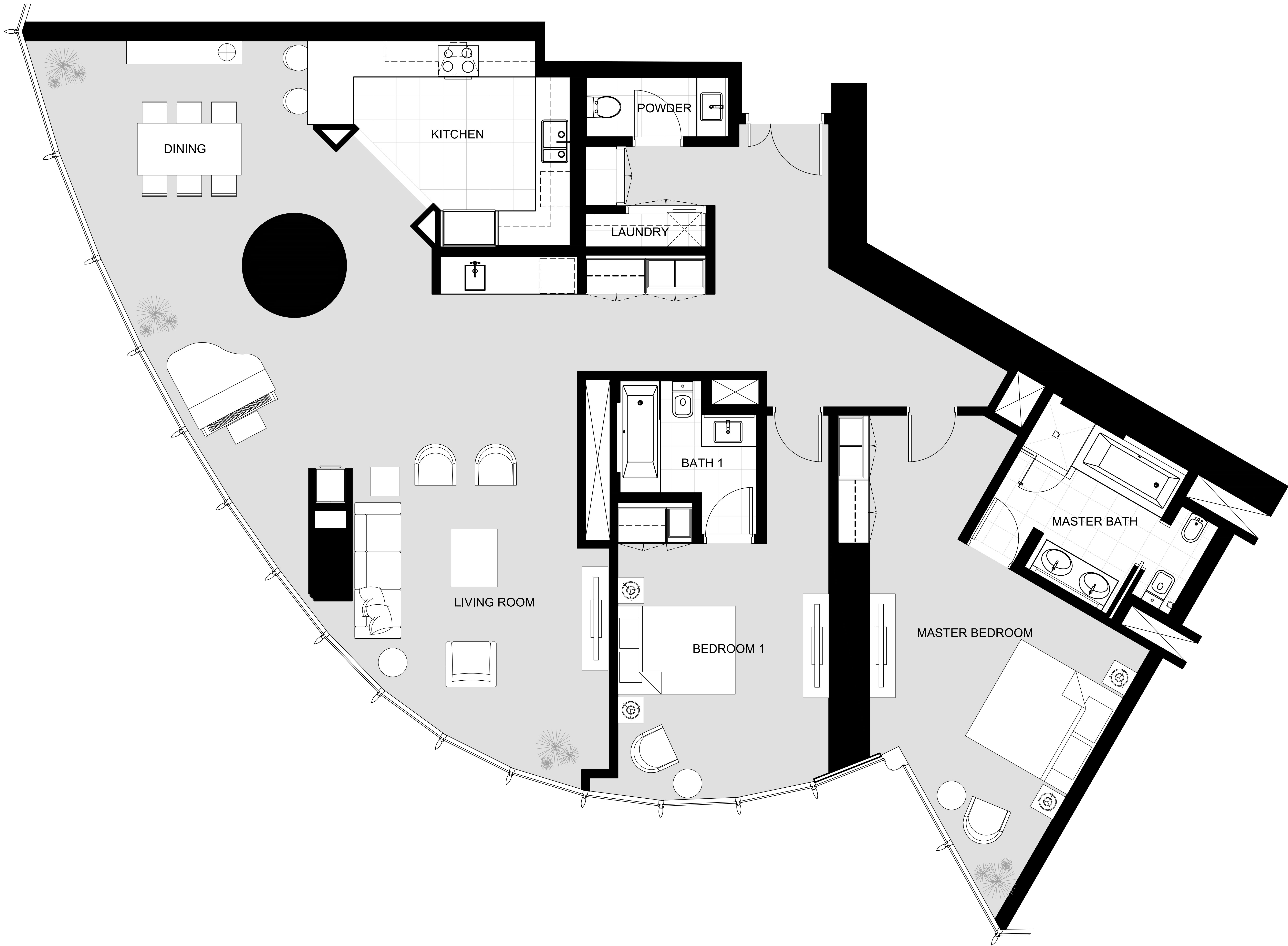
RESIDENCES

2 BEDROOM APARTMENT

UNIT NO.	LOC. CODE	TOTAL AREA	
10525	Burj Khalifa Zone 4-105-10504	206.06 SQ.M.	2,218 SQ.FT

Room Areas in Square Meter

Living = 34.8 M²
Dining = 30.5 M²
Kitchen = 13.0 M²
Master Bedroom = 24.3 M²
Bedroom 1 = 19.2 M²
Master Bathroom = 9.3 M²
Bathroom 1 = 4.8 M²
Powder = 2.5 M²
Laundry = 3.9 M²
Maid = 0.0 M²
Maid's Bath = 0.0 M²



FLOOR PLAN 1. All dimensions are in imperial and metric, and measured from finish to finish excluding construction tolerances. 2. All materials, dimensions, and drawings are approximate only. 3. Information is subject to change without notice, at developer's absolute discretion. 4. Actual area may vary from the stated area. 5. Drawings not to scale. 6. All images used are for illustrative purposes only and do not represent the actual size, features, specifications, fittings, and furnishings. 7. The developer reserves the right to make revisions / alterations, at it's absolute discretion, without any liability whatsoever.