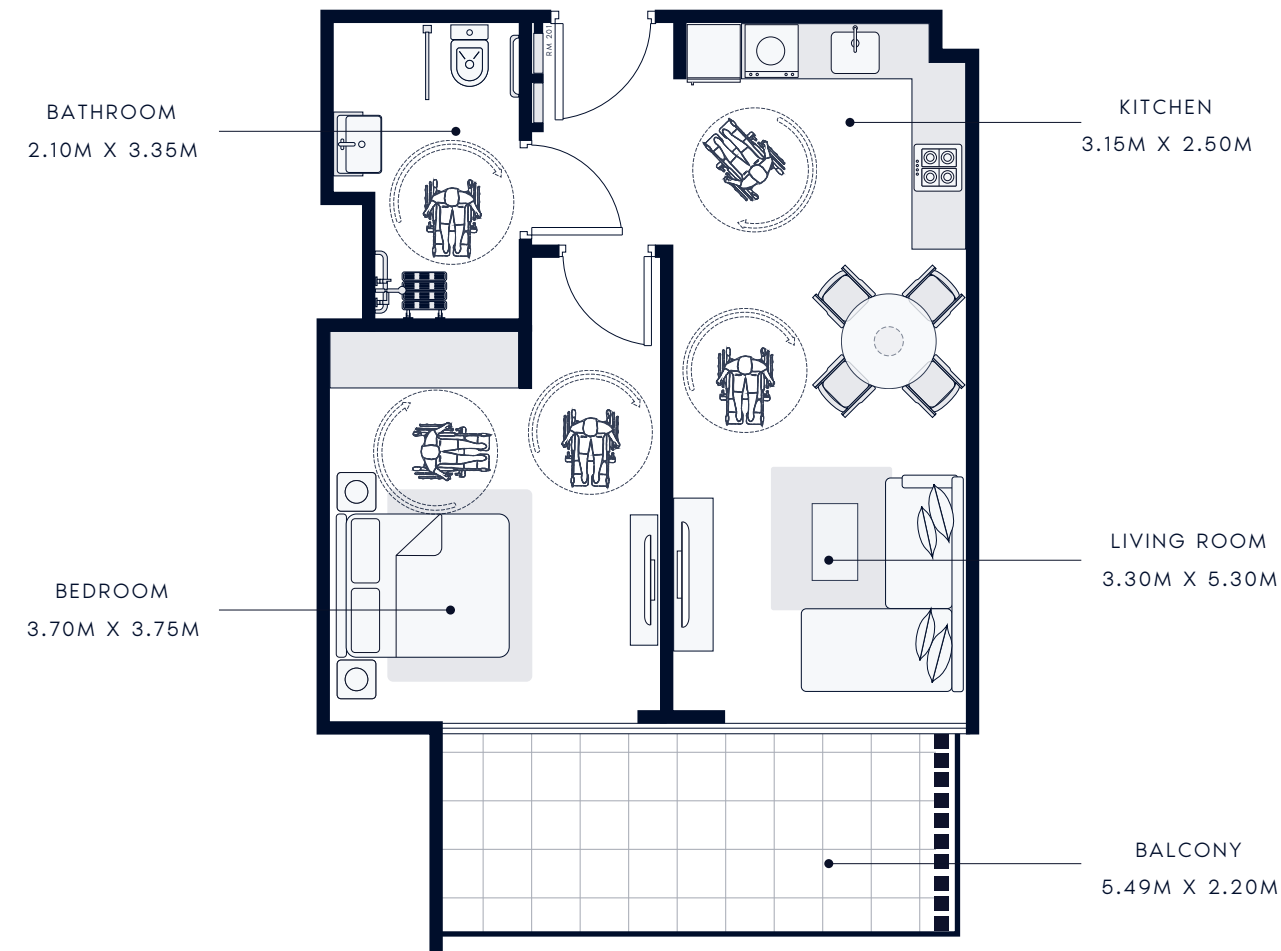


AZIZI CENTRAL

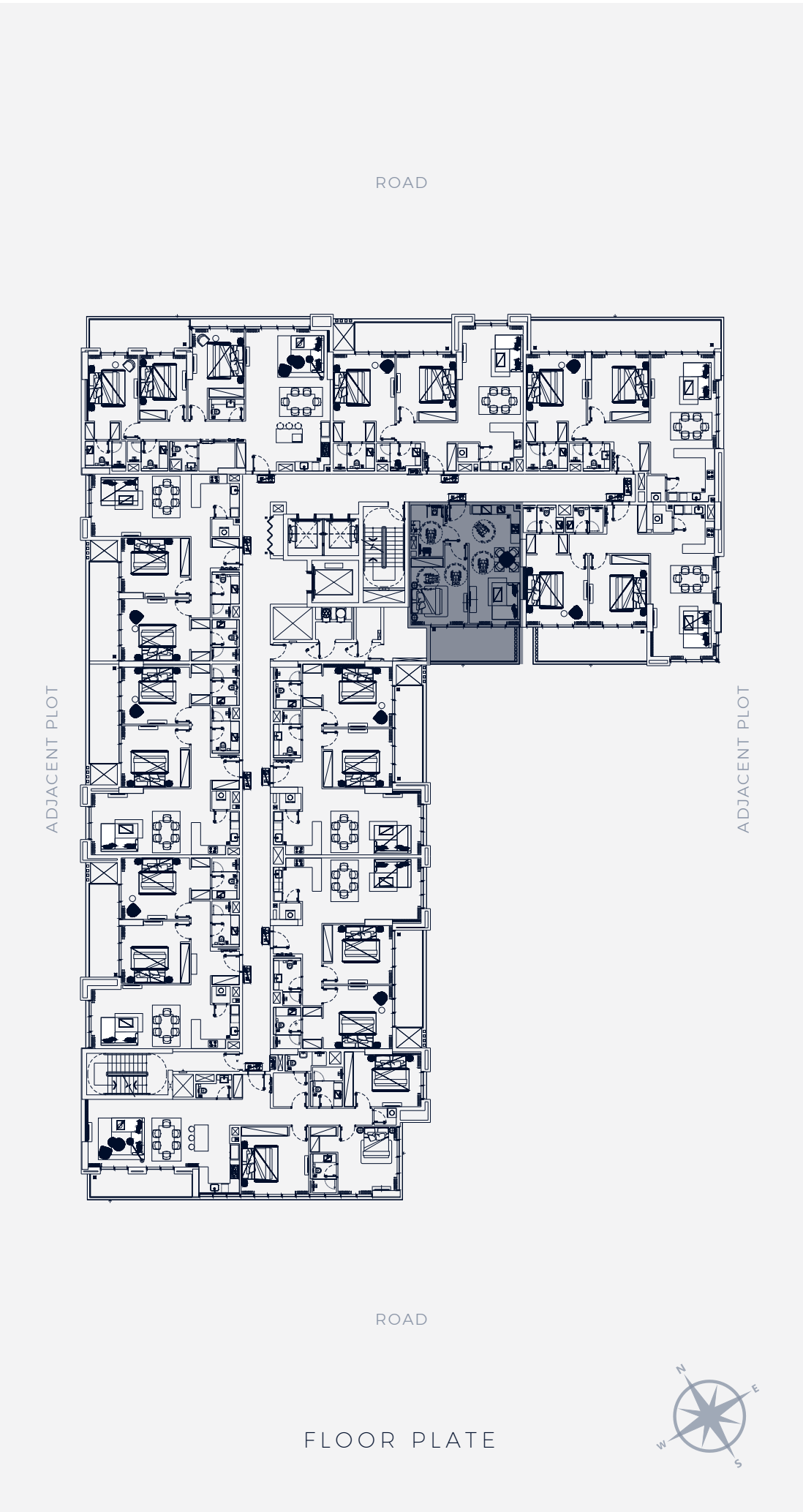
TYPICAL FLOOR PLANS

1 BEDROOM TYPE 1
1st to 2nd Floor

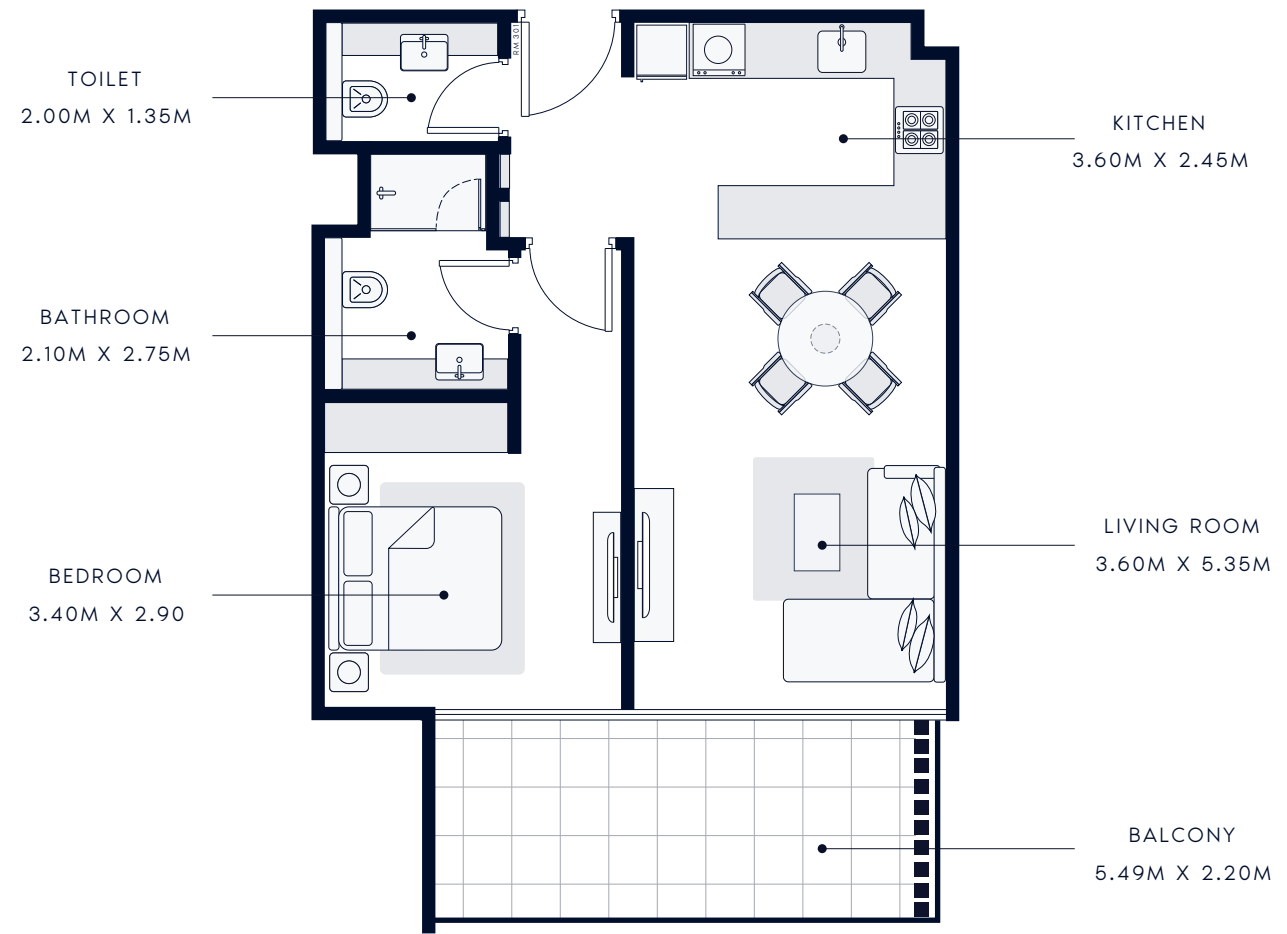


SUIT AREA: 629.37 SQ.FT | TOTAL AREA: 766.29 SQ.FT

TYPICAL UNITS

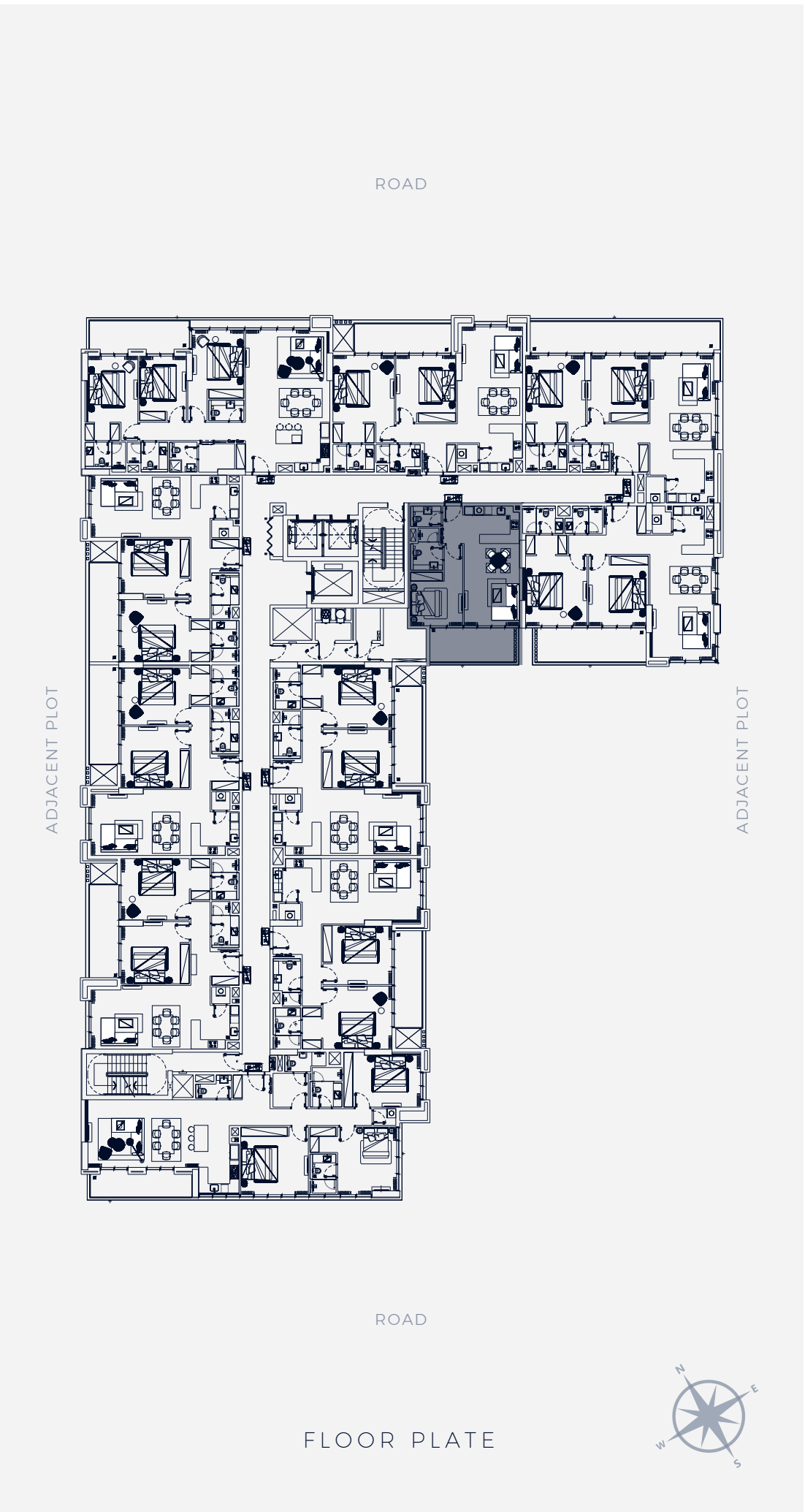


1 BEDROOM TYPE 2
3rd to 9th Floor



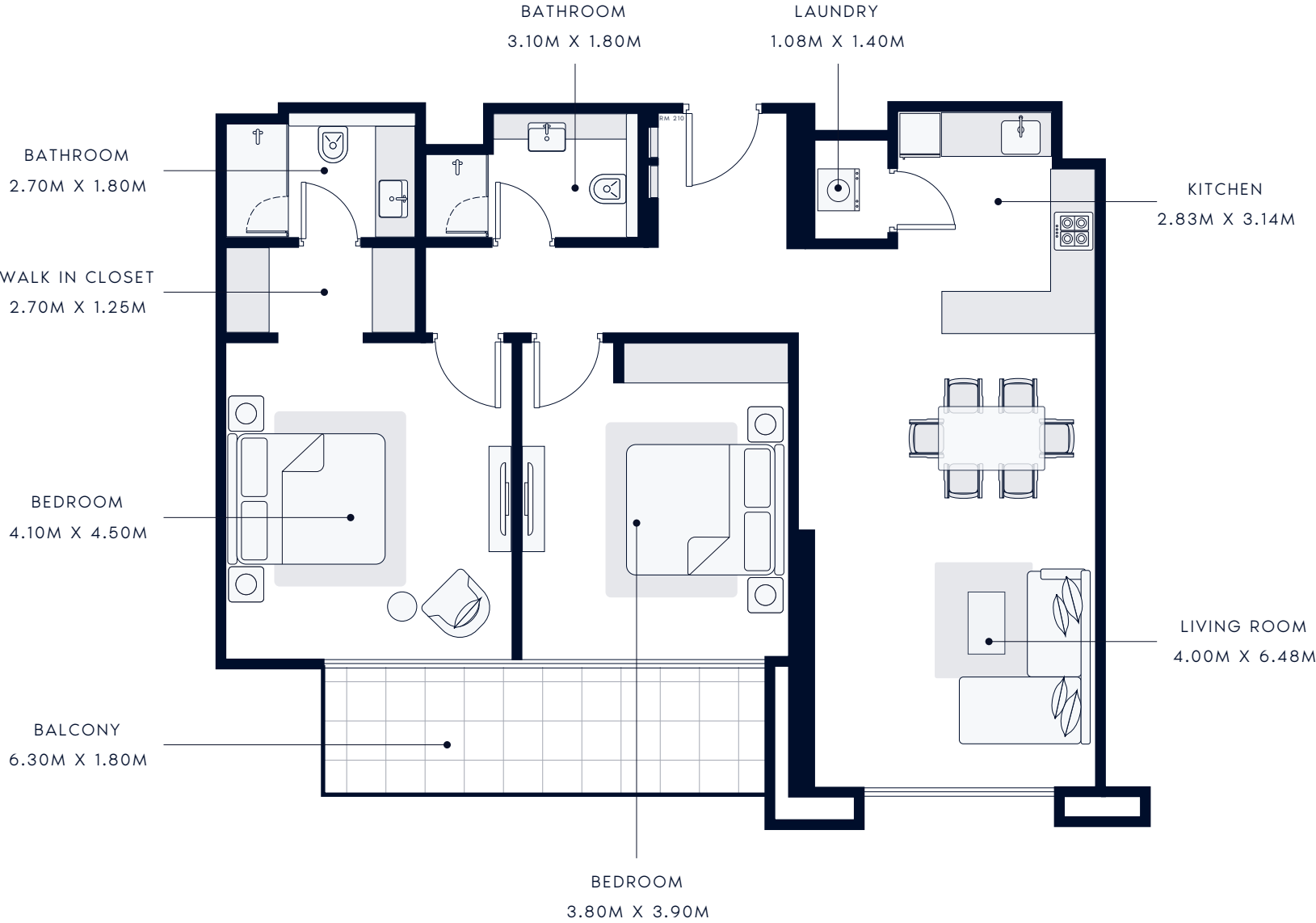
SUIT AREA: 632.92 SQ.FT | TOTAL AREA: 769.84 SQ.FT

TYPICAL UNITS



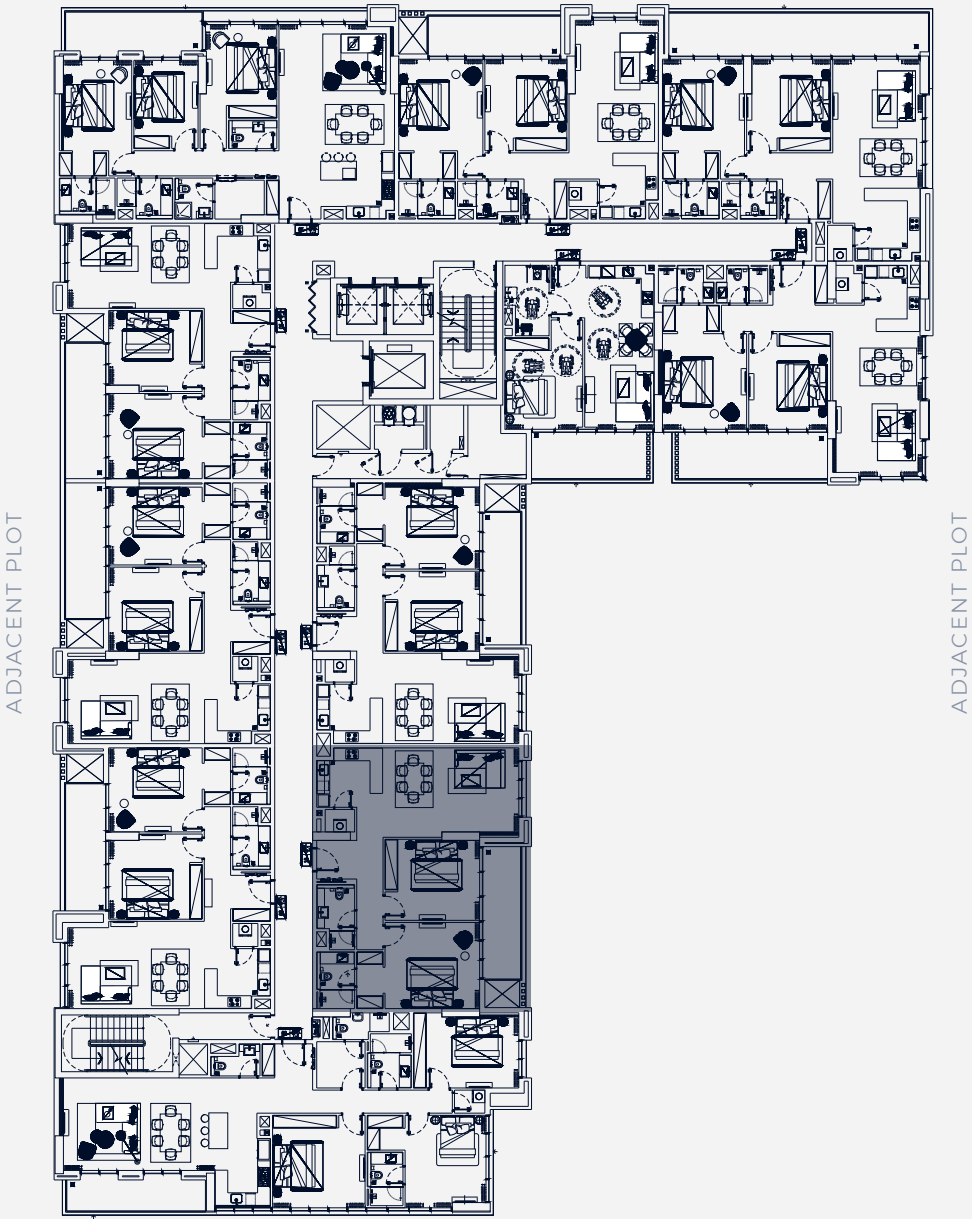
2 BEDROOM TYPE 1

2nd to 9th Floor



SUIT AREA: 1160.36 SQ.FT | TOTAL AREA: 1286.94 SQ.FT

TYPICAL UNITS

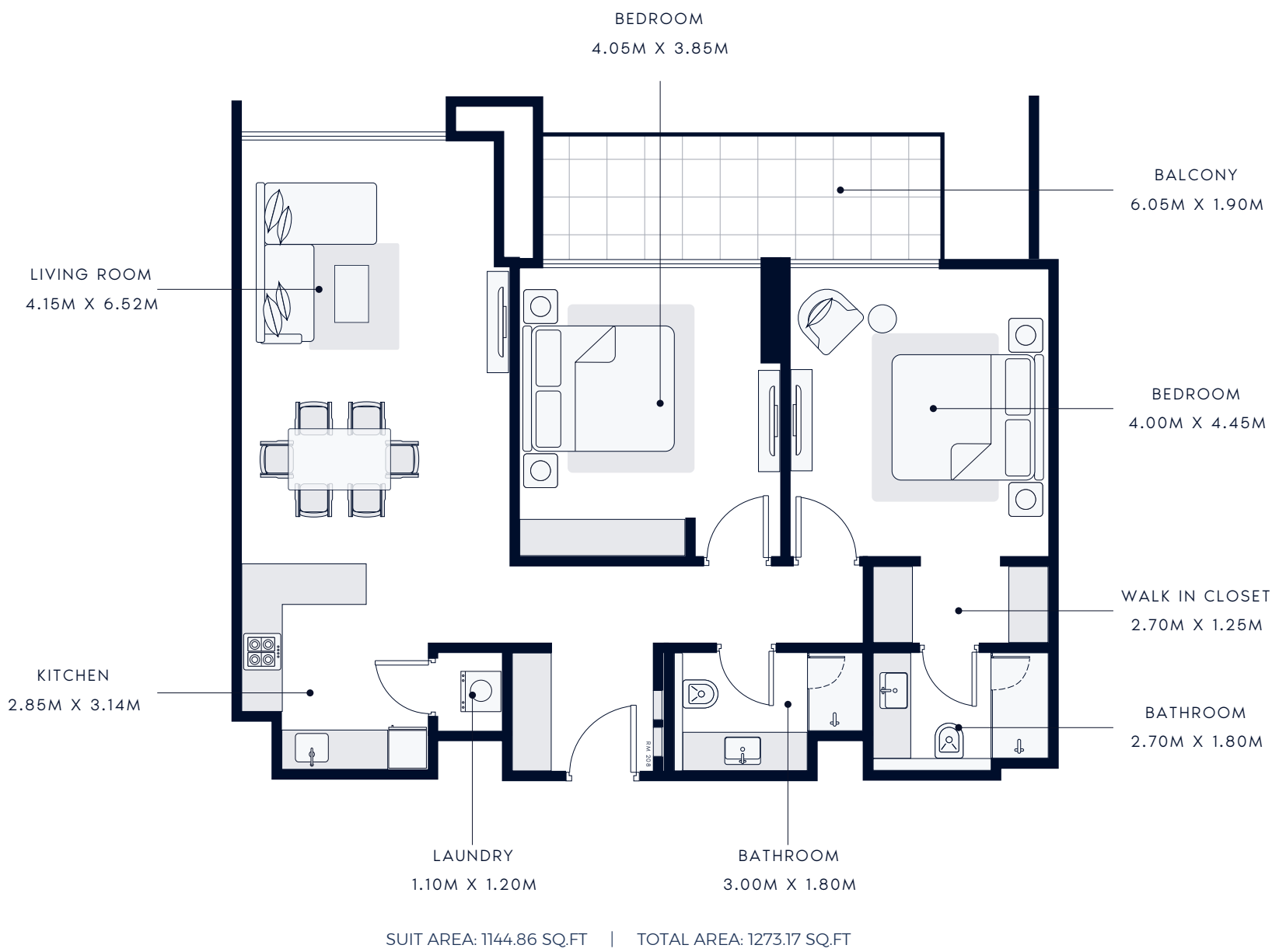


FLOOR PLATE

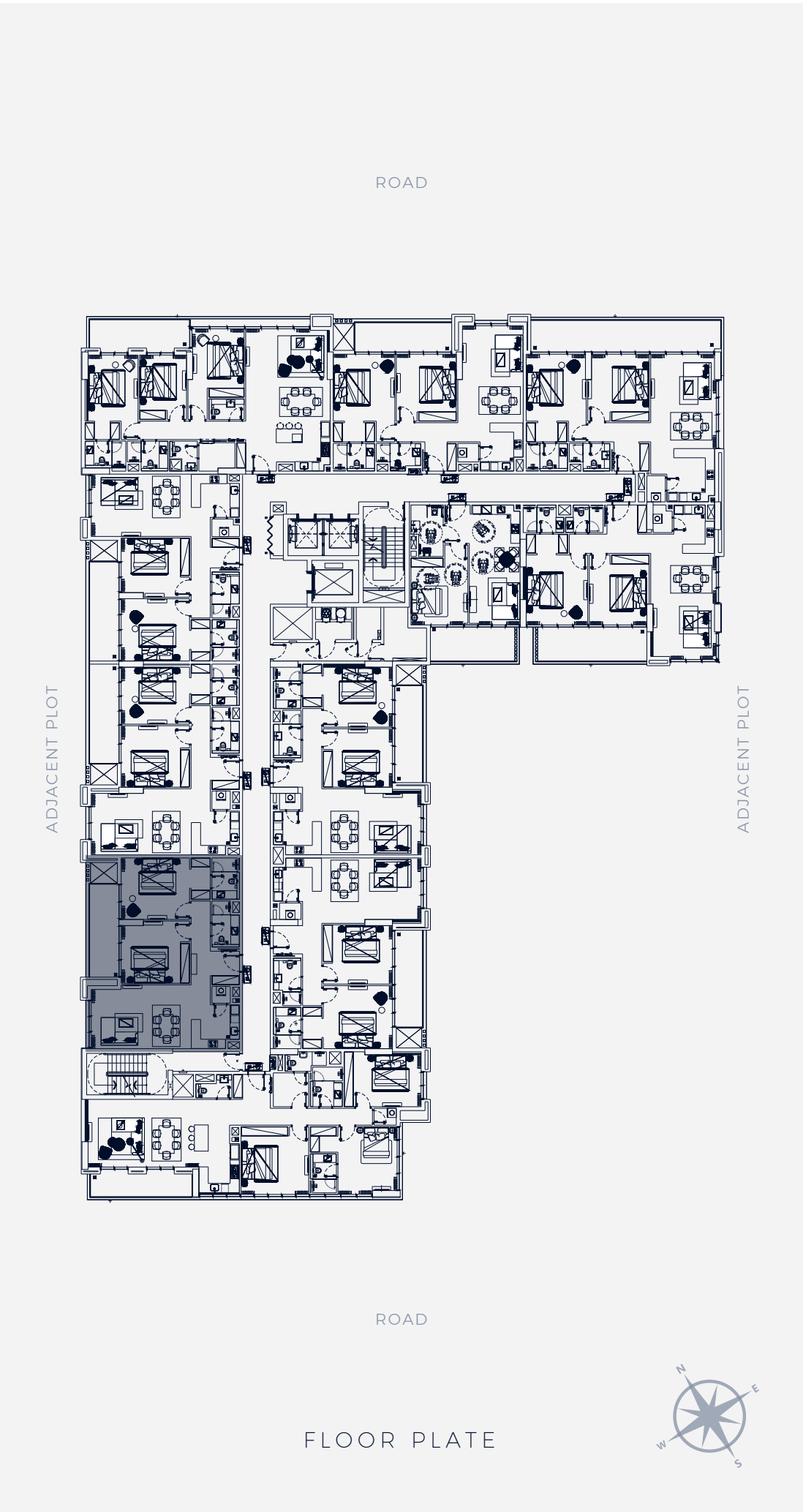


2 BEDROOM TYPE 2

1st to 9th Floor

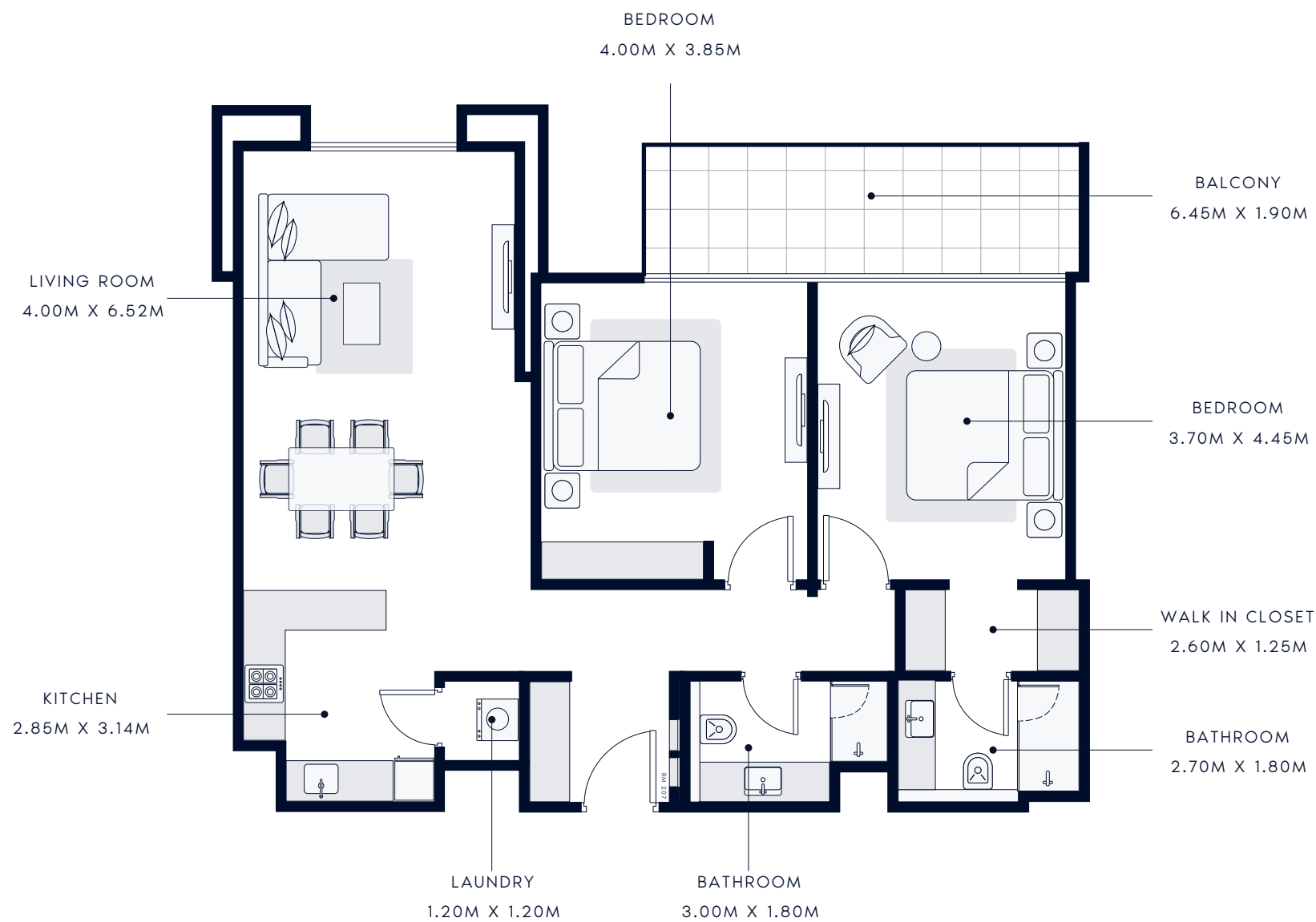


TYPICAL UNITS



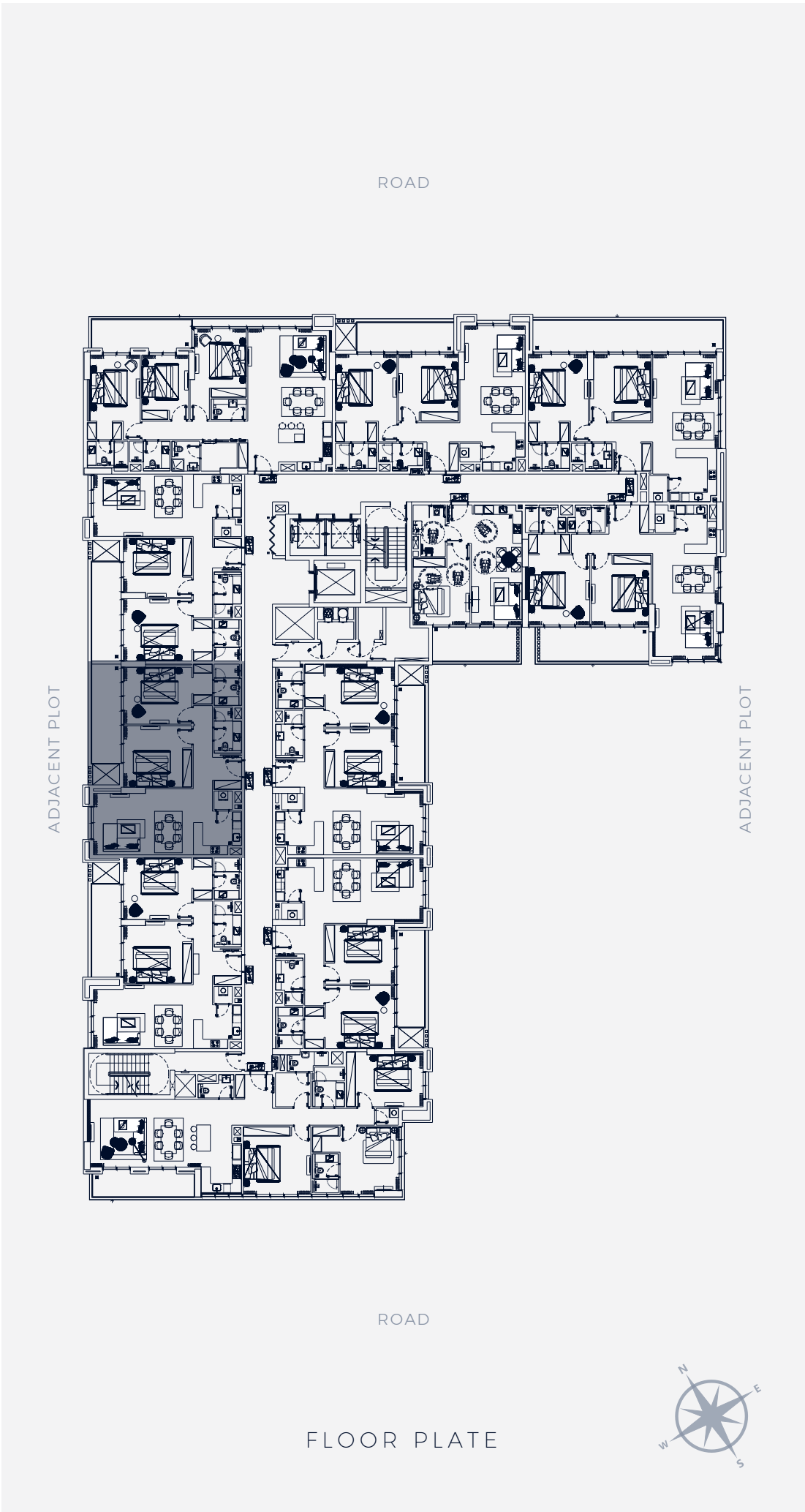
2 BEDROOM TYPE 3

1st to 9th Floor



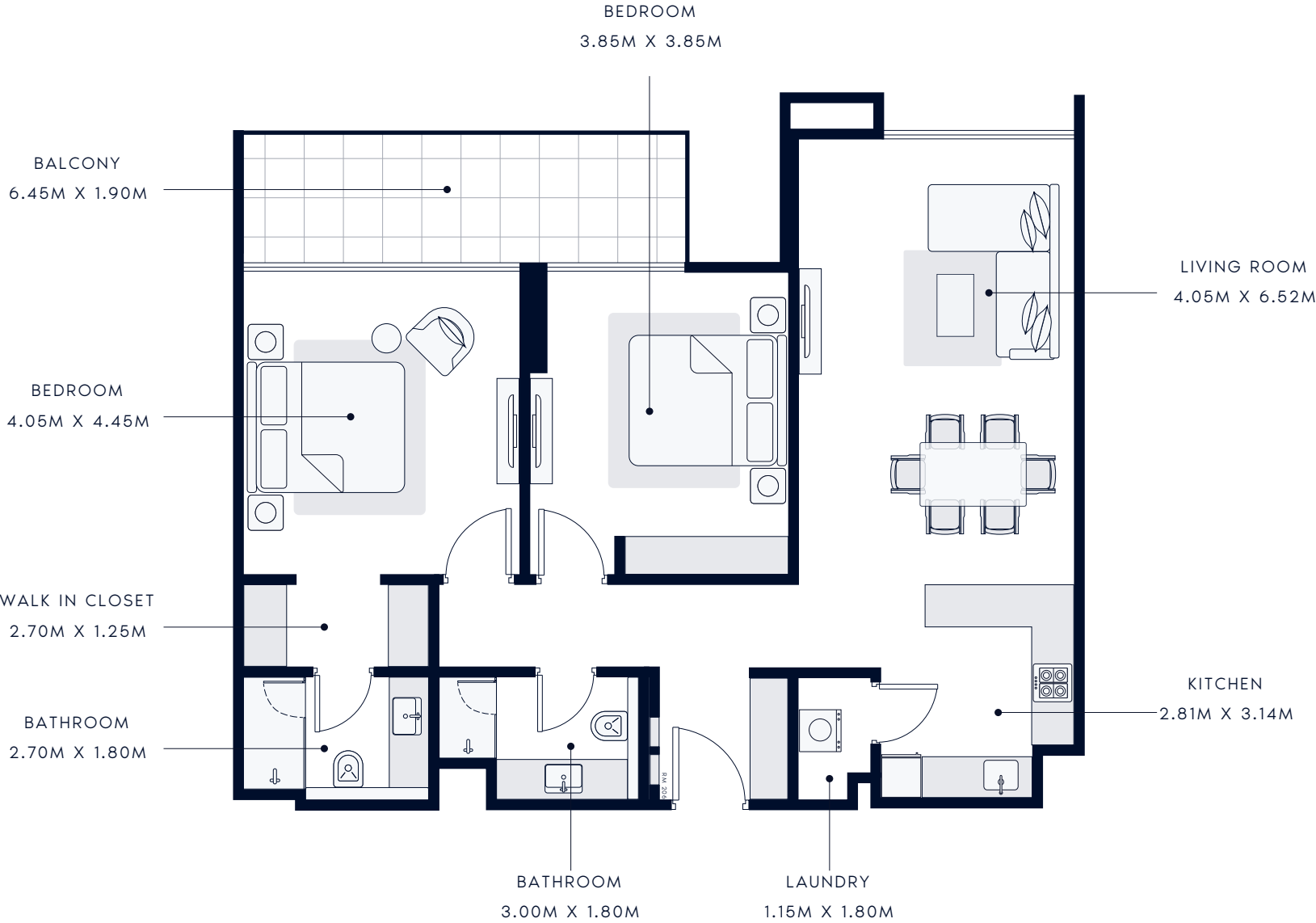
SUIT AREA: 1146.15 SQ.FT | TOTAL AREA: 1283.28 SQ.FT

TYPICAL UNITS



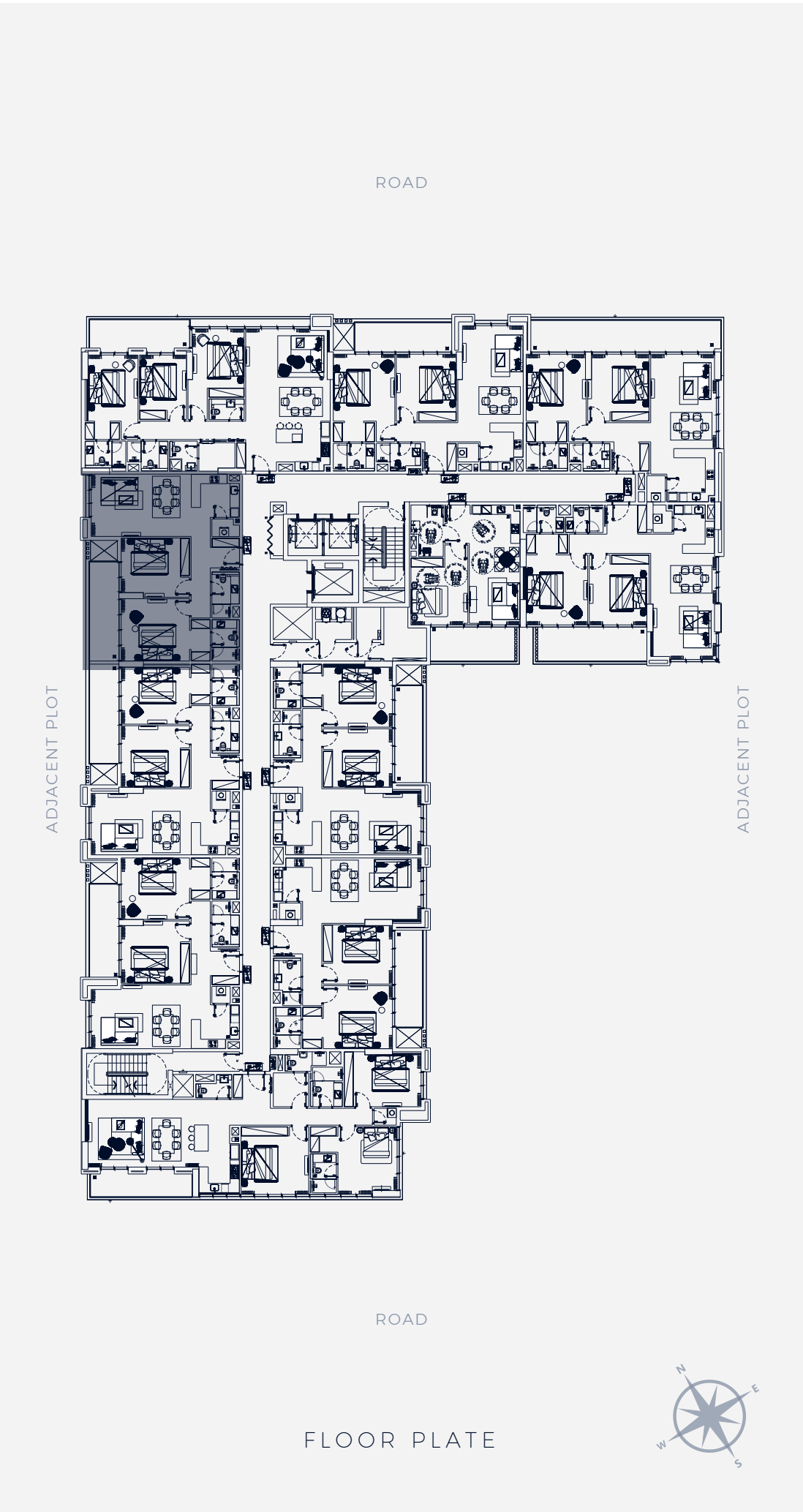
2 BEDROOM TYPE 4

1st to 9th Floor



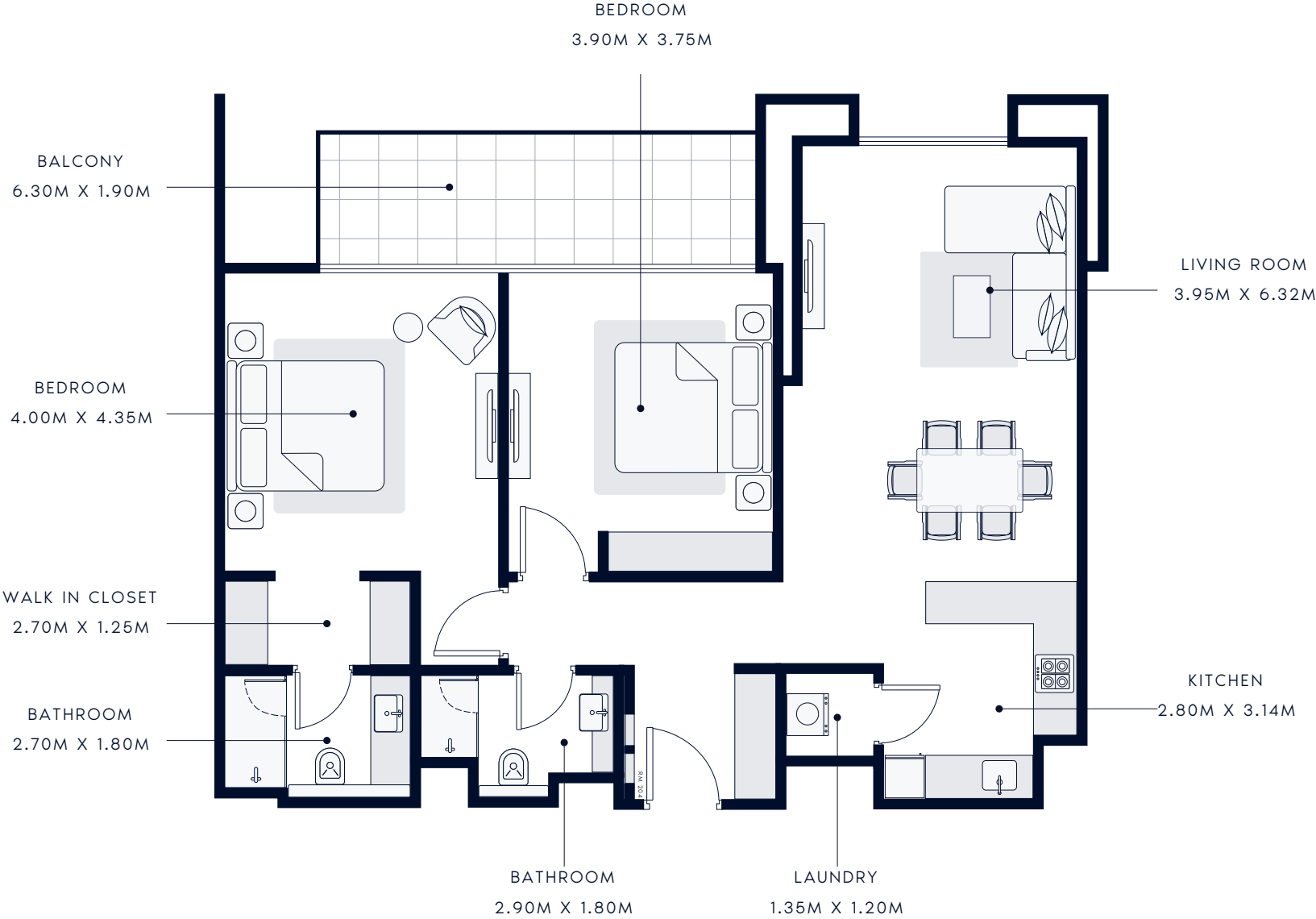
SUIT AREA: 1136.57 SQ.FT | TOTAL AREA: 1273.70 SQ.FT

TYPICAL UNITS



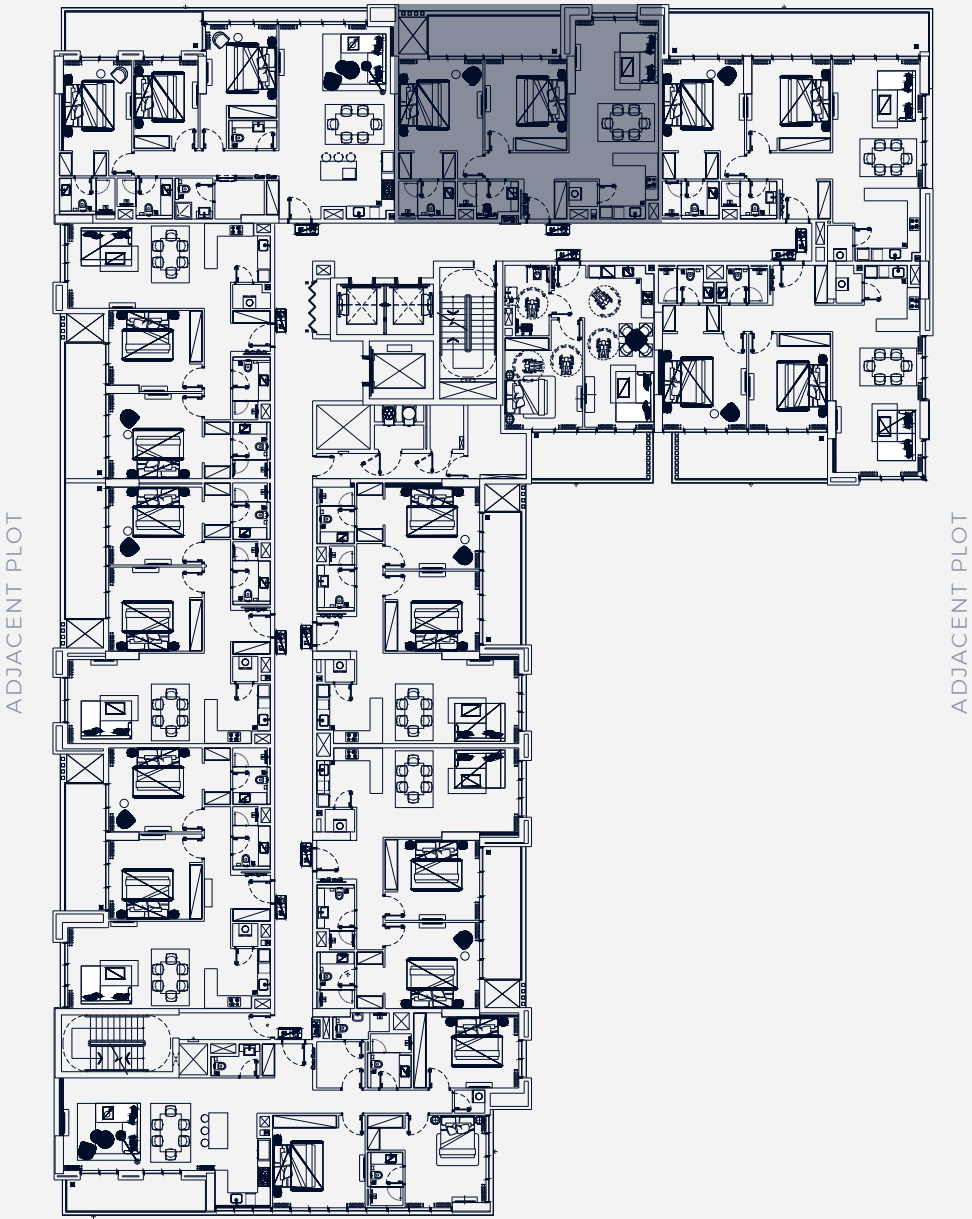
2 BEDROOM TYPE 5

1st to 9th Floor



SUIT AREA: 1116.98 SQ.FT | TOTAL AREA: 1250.99 SQ.FT

TYPICAL UNITS

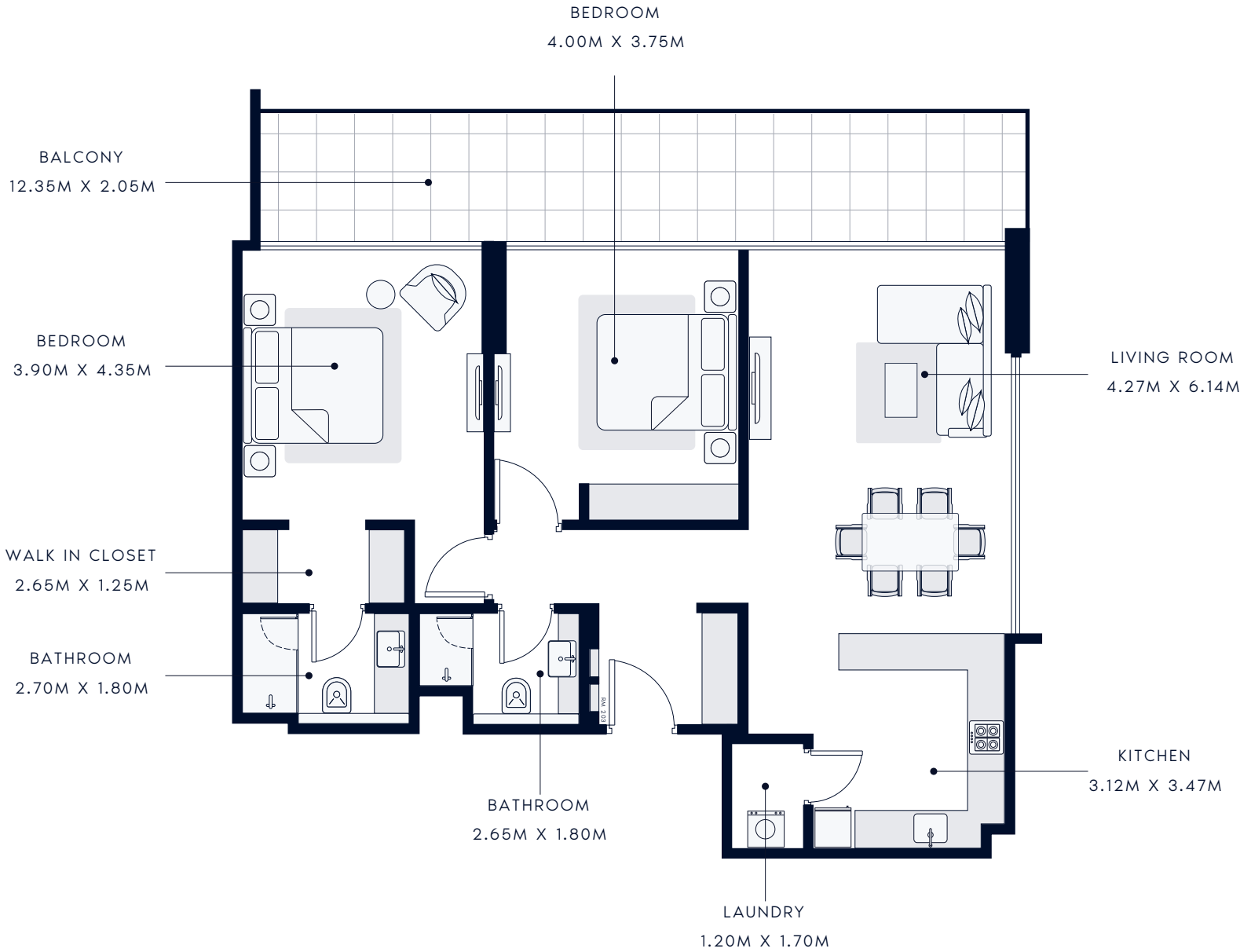


FLOOR PLATE



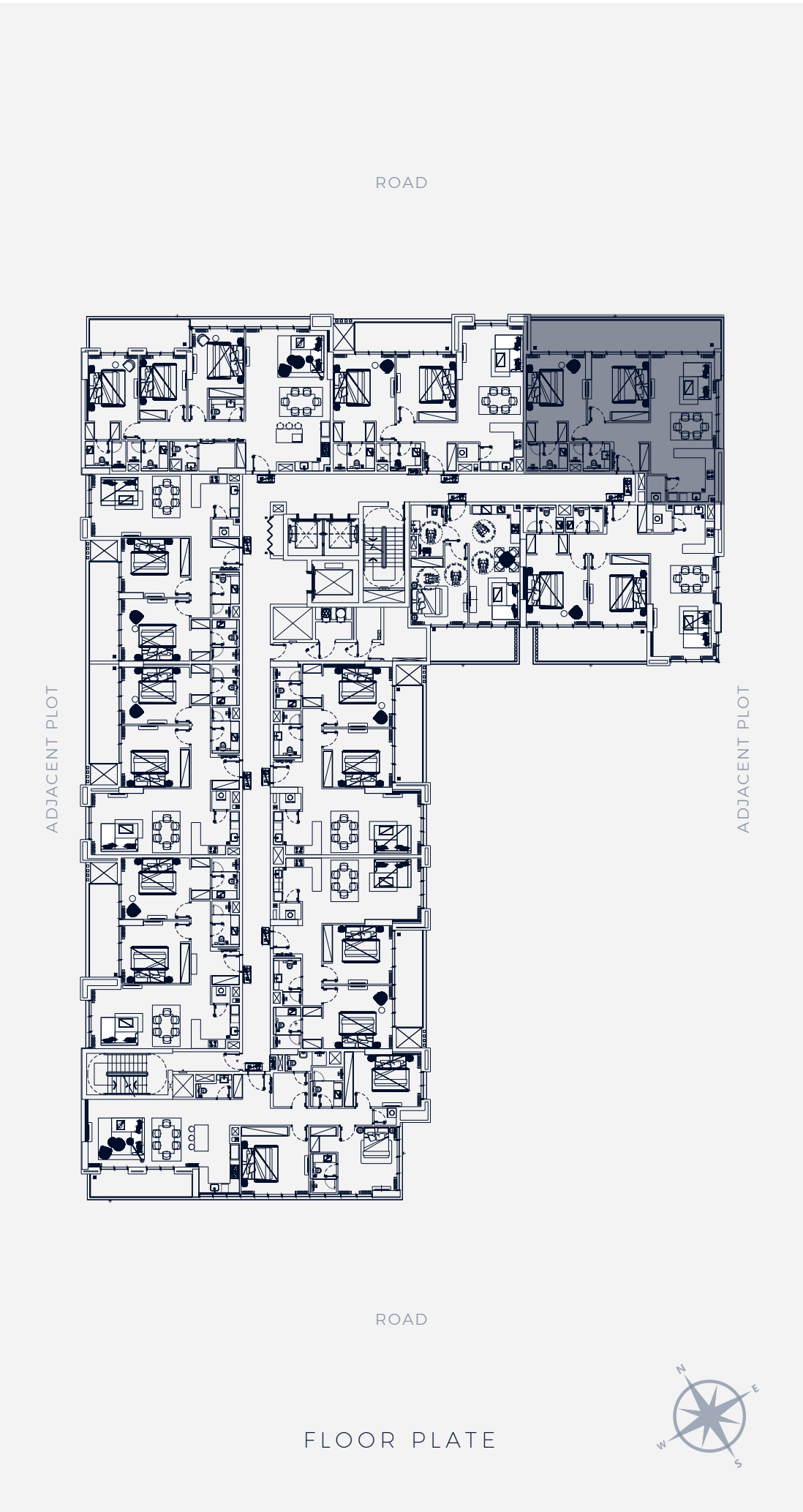
2 BEDROOM TYPE 6

1st to 9th Floor



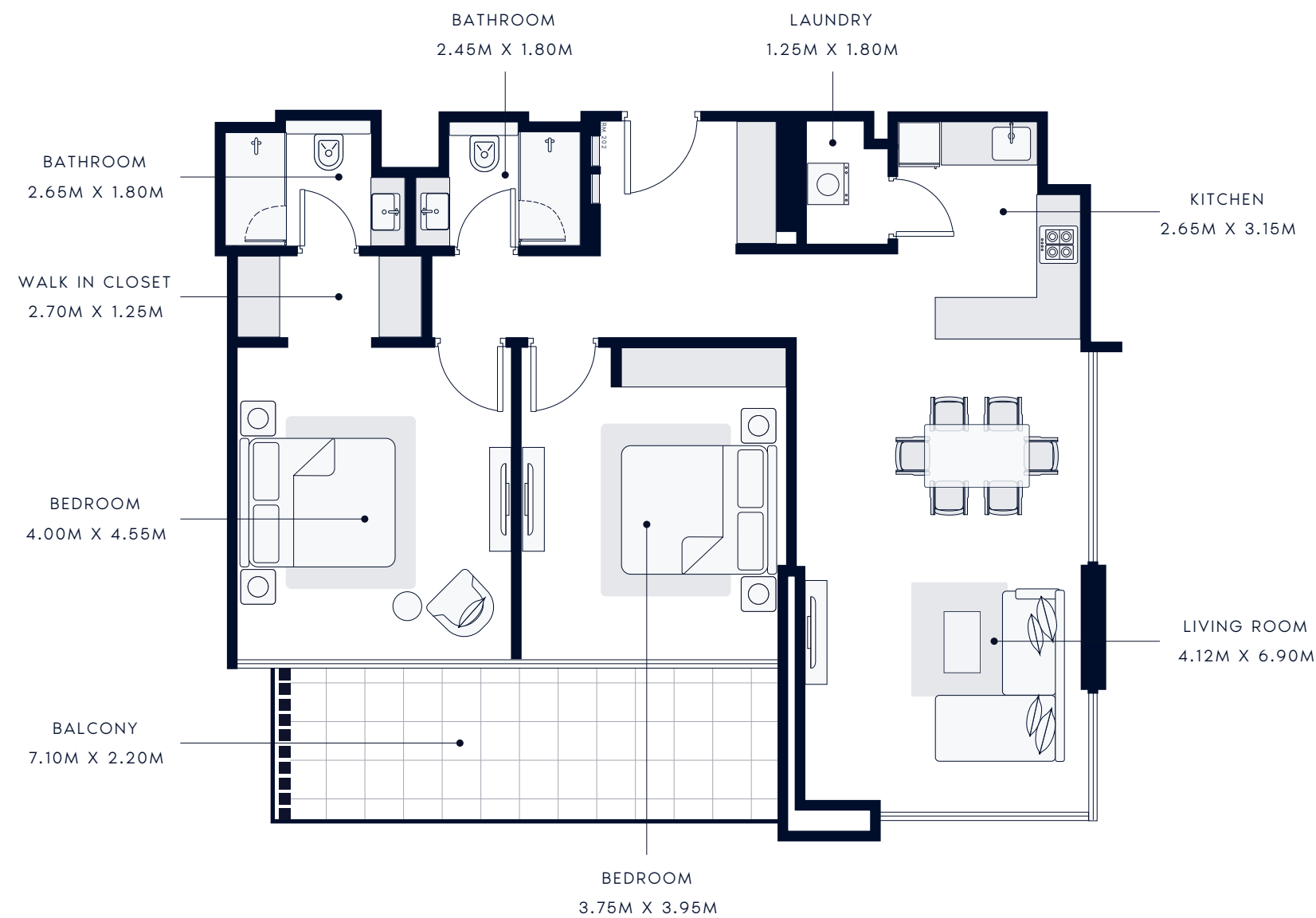
SUIT AREA: 1152.39 SQ.FT | TOTAL AREA: 1433.76 SQ.FT

TYPICAL UNITS



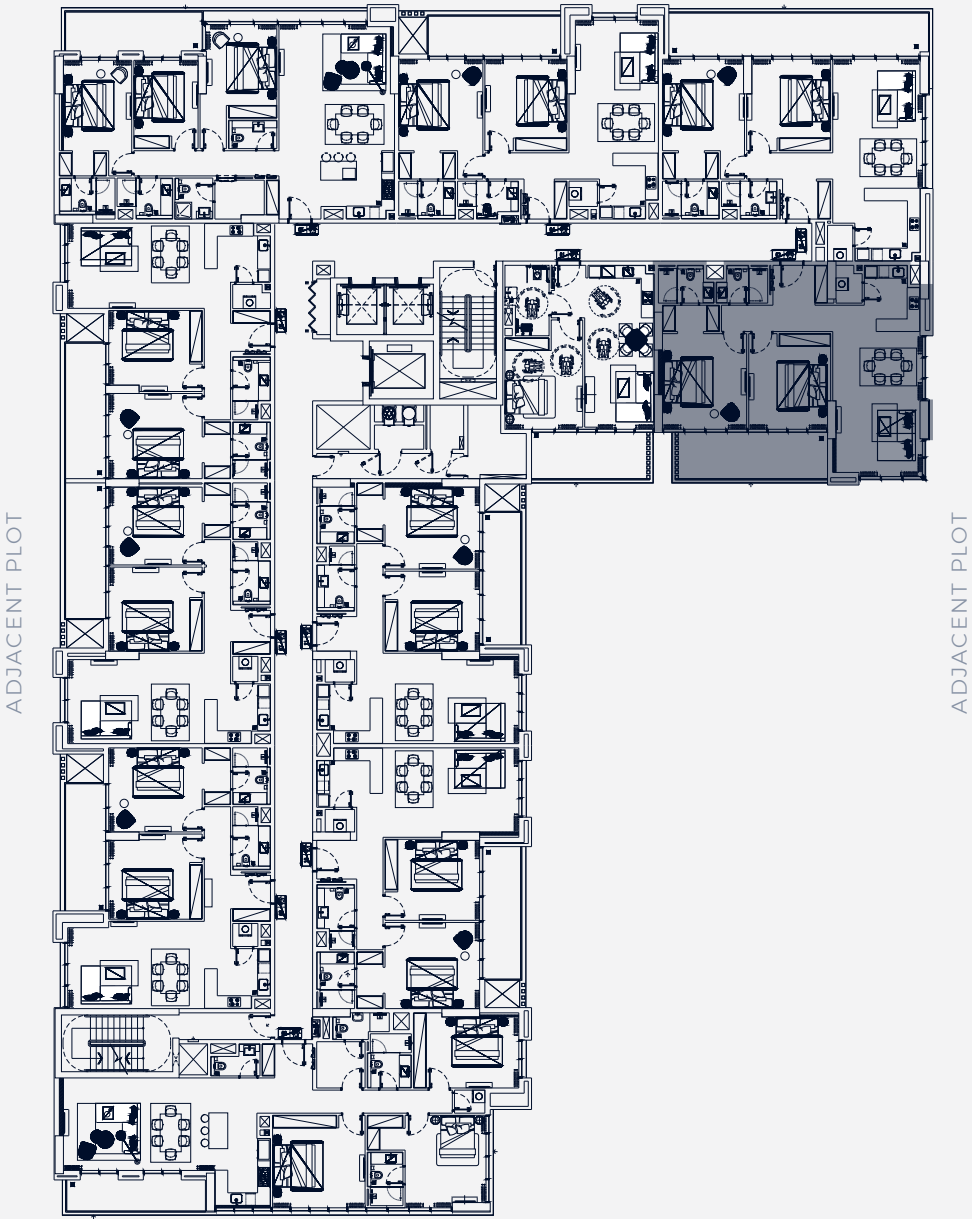
2 BEDROOM TYPE 7

1st to 9th Floor



SUIT AREA: 1191.57 SQ.FT | TOTAL AREA: 1367.24 SQ.FT

TYPICAL UNITS



FLOOR PLATE



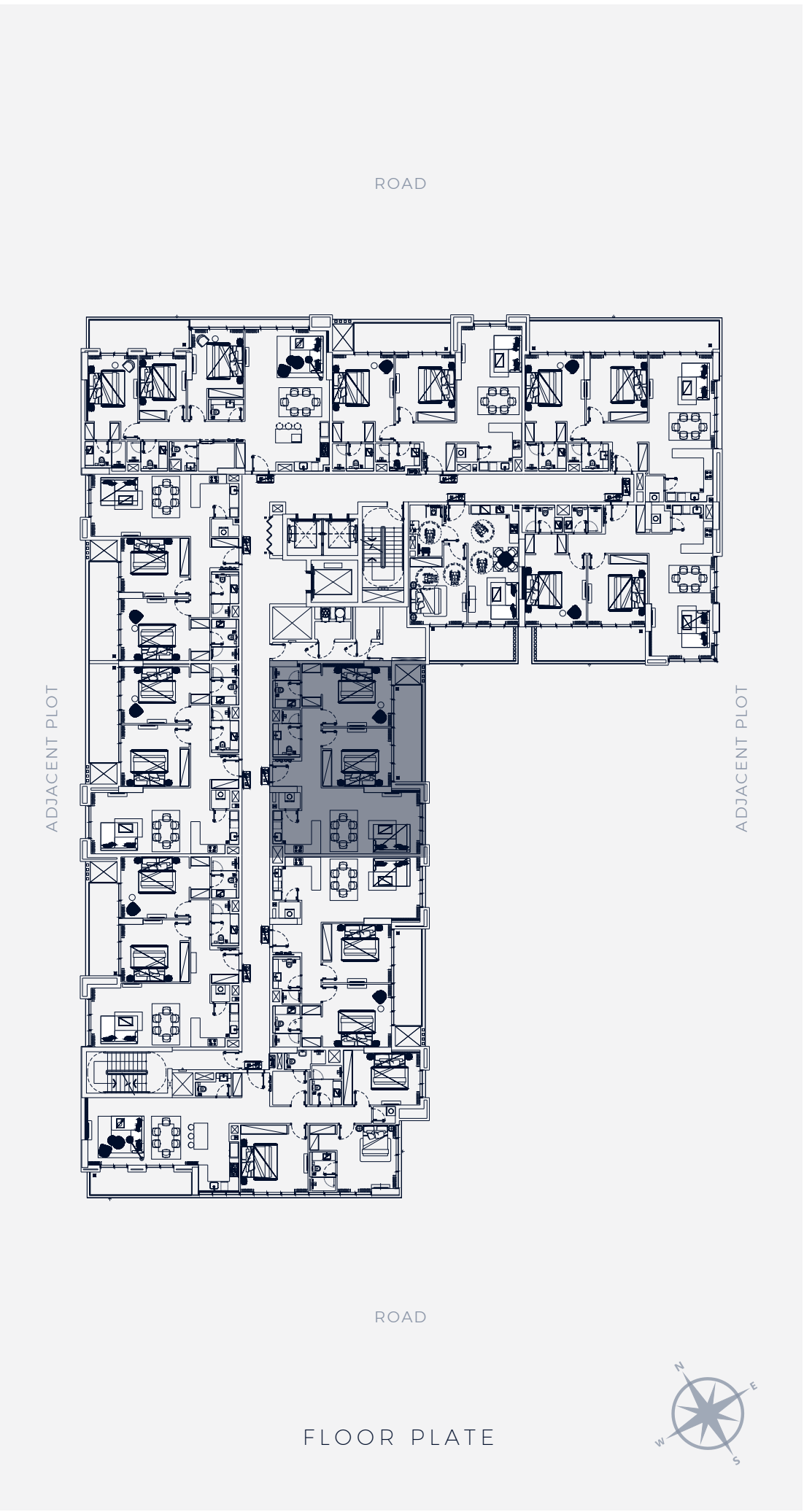
2 BEDROOM TYPE 3

2nd to 9th Floor



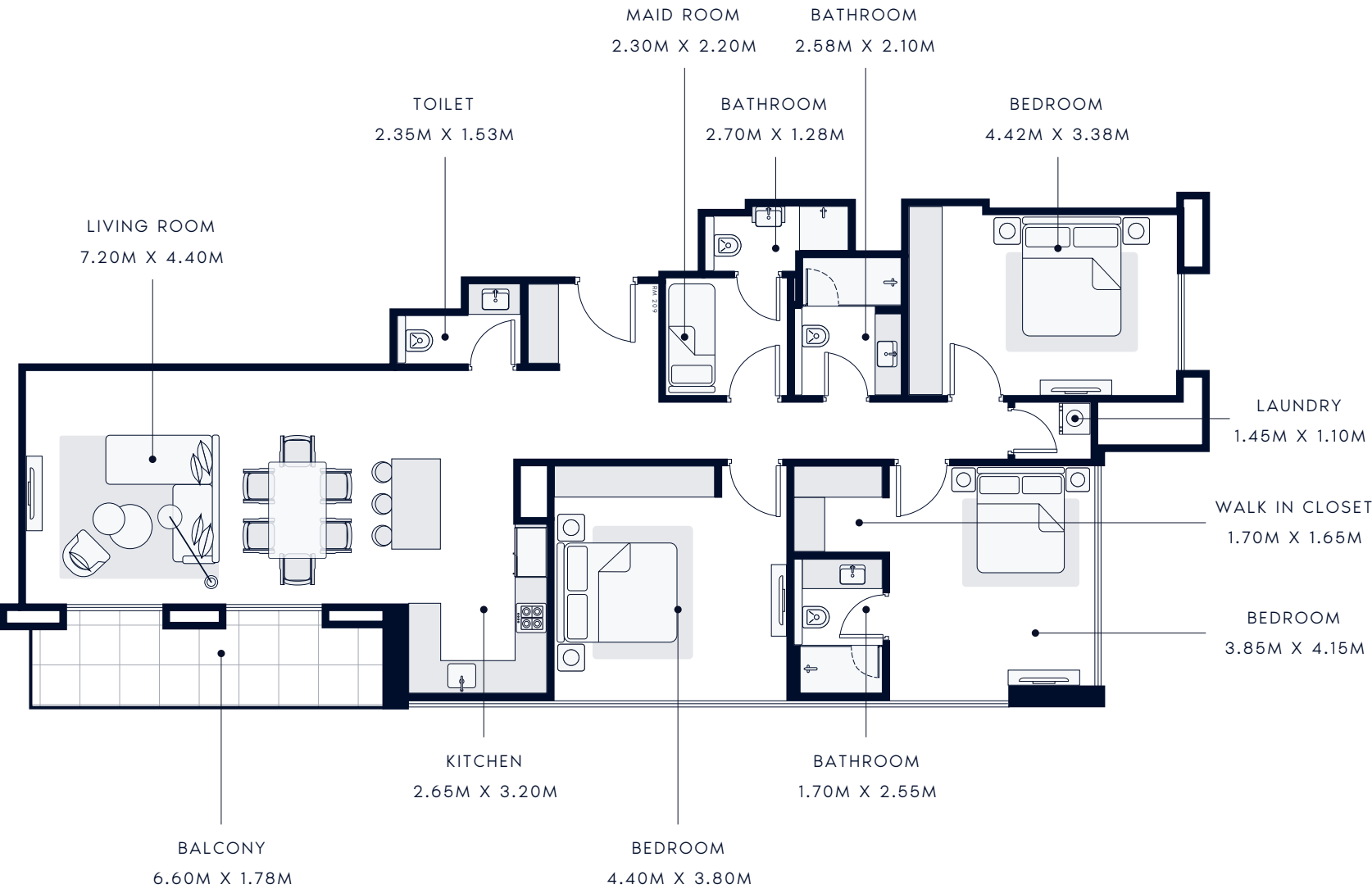
SUIT AREA: 1159.18 SQ.FT | TOTAL AREA: 1285.76 SQ.FT

TYPICAL UNITS



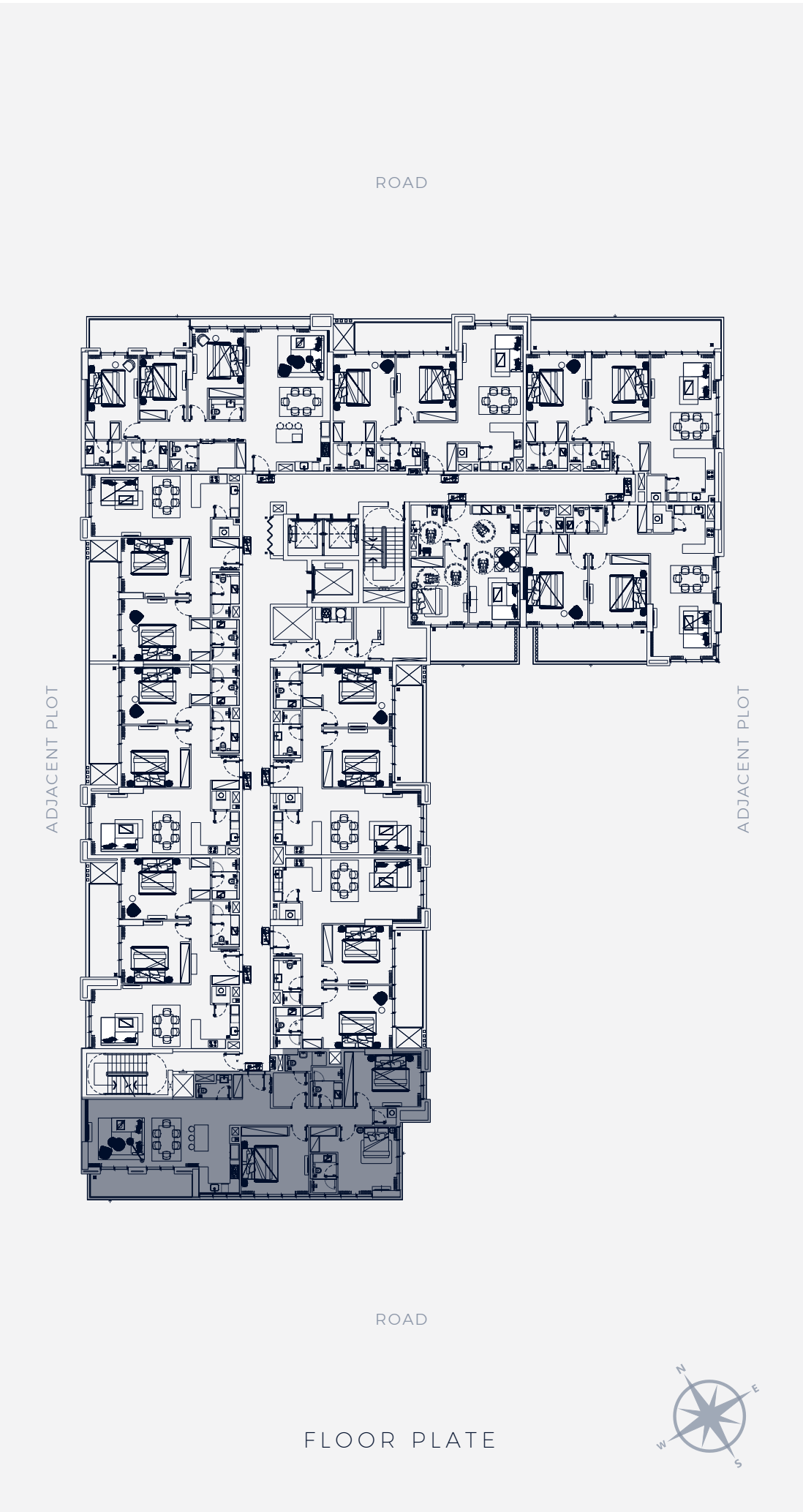
3 BEDROOM TYPE 1

1st to 9th Floor



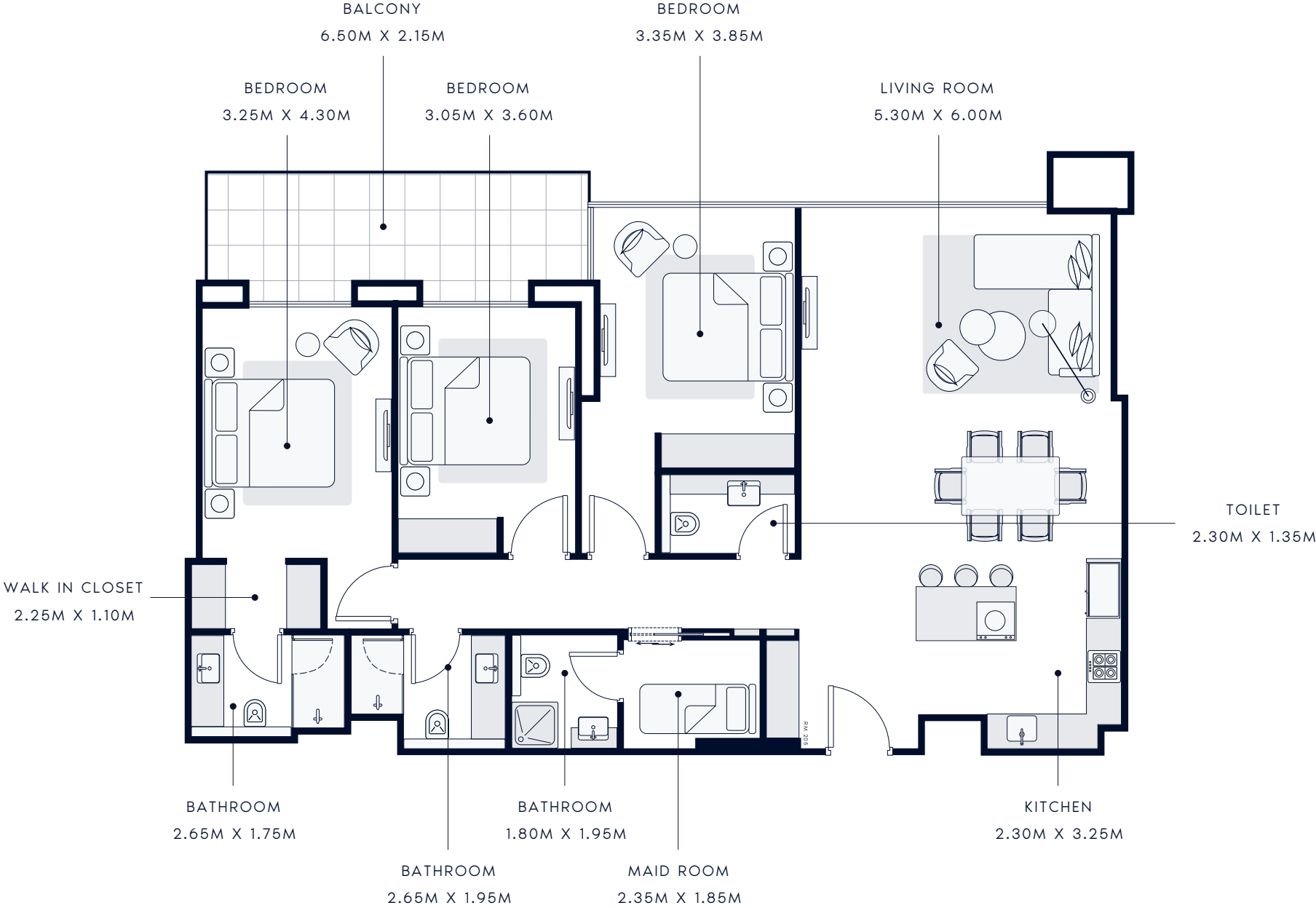
SUIT AREA: 1669.28 SQ.FT | TOTAL AREA: 1803.29 SQ.FT

TYPICAL UNITS



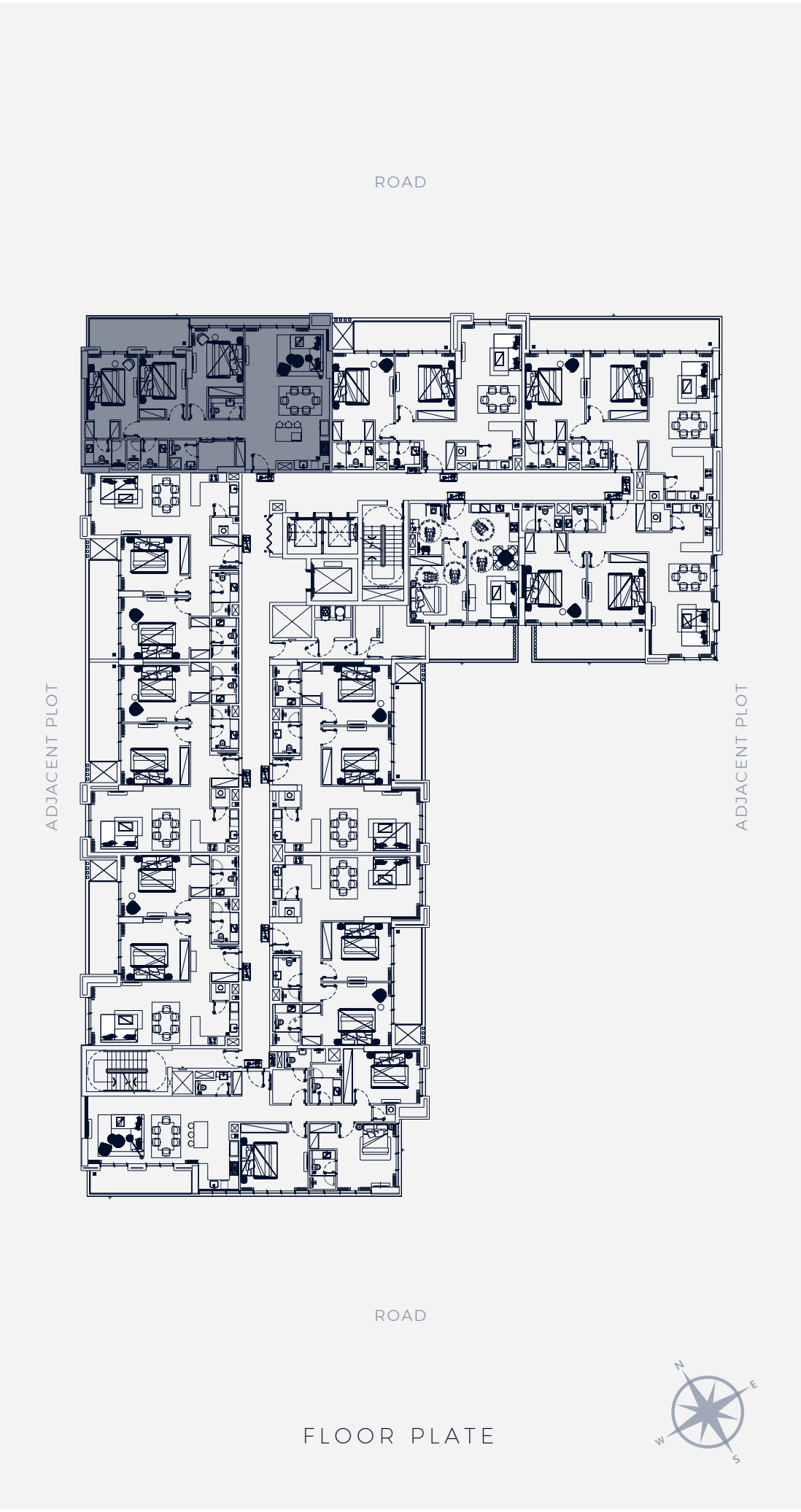
3 BEDROOM TYPE 2

1st to 9th Floor



SUIT AREA: 1507.28 SQ.FT | TOTAL AREA: 1661.64 SQ.FT

TYPICAL UNITS



Disclaimer

Please note this floor plan is for marketing purposes and is to be used for presentation and indicative purposes only and not contractual. The Developer reserves the right to make revisions to the floor plans at any time which may include but not limited to any features, materials, dimensions, drawings, layout, design features, views, areas, images and amenities without notice.