

CENTRAL PARK *PLAZA*





AN EXCLUSIVE ADDRESS

Located in City Walk one of the most vibrant location in Dubai, between Jumeirah street and Sheikh Zayed road. Central Park aims to establish one of the most unique living communities in the city of Dubai.

CONNECTIVITY

Its central location provides ease of connectivity through well-established road networks to the rest of the city having access to some of the main destinations in Dubai.

2

MINUTES FROM
CITY WALK MALL

2

MINUTES FROM
SHEIKH ZAYED ROAD

5

MINUTES FROM
The DUBAI MALL

10

MINUTES FROM
JUMEIRAH BEACH

15

MINUTES FROM
DUBAI INTERNATIONAL AIRPORT





10

RESIDENTIAL
BUILDINGS

200

METRE
WIDE PARK

20+

COMMUNITY
AMENITIES

40,000

SQUARE METRES
OF GREEN SPACE

CENTRAL PARK AT CITY WALK

Central Park is a lush green community inspiring residents to embrace a healthy lifestyle within the heart of Dubai.



PARK FACILITIES



Water Features



Central Pool Area



Outdoor Sport Facilities



Playgrounds and Activity Areas



Jogging Tracks



Fitness Station



Event Spaces



BBQ and Picnic Areas



Pet Park





LUSH PARKLAND & OPEN LAWN AREAS



WATER FEATURES AND INTERACTIVE SPLASH SPACES



GATED COMMUNITY WITH PARK ONLY ACCESSIBLE BY RESIDENTS



WINDING WALKWAYS WITHIN THE PARK IDEAL FOR STROLLS WITH FRIENDS AND FAMILY



KIDS PLAYGROUND AND OUTDOOR ACTIVITY AREAS



MULTI-USE OUTDOOR SPORTS FACILITIES



PUTTING GREEN FOR AVID GOLFERS AND LEARNERS ALIKE



PET PARK FOR OUR FURRY FRIENDS TO ENJOY AND MUCH MORE

CENTRAL PARK
PLAZA

PROJECT LOCATION



LOCATED IN AN IDEAL AREA OF THE COMMUNITY, CAPTURING VIEWS OF THE LUSH PARK, SEA AND DUBAI SKYLINE FROM HIGHER FLOORS.

CENTRAL PARK
PLAZA

EXPERIENCES AND AMENITIES



AN ARRIVAL EXPERIENCE THAT EXUDES GRANDEUR FOR GUESTS AND RESIDENTS TO MARVEL



A TRULY UNIQUE AND BESPOKE SHADED DROP OF AREA



AN AWE-INSPIRING AND WELCOMING EXPERIENCE AT THE MAIN ENTRANCE LOBBY



LOBBY LOUNGES CONNECTING RESIDENTS TO THE WIDE RANGE OF AMENITIES



A PRIVATE INDOOR/OUTDOOR LOUNGE AREA FOR RESIDENTS, SPILLING OUT AND CONNECTING DIRECTLY TO THE PARK.



WELL EQUIPPED FITNESS CENTRE TO PROMOTE A HEALTHY LIFESTYLE



OFFERING PANORAMIC VIEWS OF THE PARK, THE PODIUM LEVEL IS ALSO SIGNIFICANTLY LANDSCAPED TO BLEND WITH THE LUSH SURROUNDINGS.



CENTRAL PARK PLAZA WILL BE THE MOST SOUGHT-AFTER PHASE OF THE COMMUNITY

CENTRAL PARK
PLAZA

PRIVATE OUTDOOR
FACILITIES



AN INFINITY POOL OVERLOOKING THE PARK WITH A RELAXING ATMOSPHERE



A PRIVATE PODIUM TERRACE EXCLUSIVELY FOR RESIDENTS



STEPPED LANDSCAPING CONNECTING THE PRIVATE AREA RESERVED FOR RESIDENTS TO THE CENTRAL PARK

CENTRAL PARK
PLAZA

APARTMENTS



THE UNITS ARE DESIGNED TO CONNECT THE INSIDE TO OUTSIDE, ACCENTUATED BY EXPANSIVE SLIDING WINDOWS, LEADING TO SPACIOUS TERRACES THAT CAPTURE THE BEST VIEWS OF CENTRAL PARK AND THE CITY SKYLINE



PANELS THAT CAN BE COMPLETELY OPENED, CONNECTING YOUR HOME TO THE NATURE OF THE PARK



CONTEMPORARY LIVING ENHANCED BY SUPERIOR FINISHES WITH CORNER PANORAMIC VIEWS



ELEGANT KITCHEN DESIGNS WITH FITTED APPLIANCES AND METICULOUSLY SELECTED FINISHES



BEDROOMS WITH FULL HEIGHT GLASS PANELS OVERLOOKING THE PARK



SPACIOUS BATHROOMS WITH VARIETY OF FIXTURES AND HIGH-END MATERIALS SELECTION

CENTRAL PARK
PLAZA

TOWNHOUSES



CLOSEUP VIEW OF THE TOWNHOUSES WITH FULL ACCESS TO THE PARK THROUGH RAISED PRIVATE GARDENS.



TOWNHOUSES WILL CONSIST OF A RAISED GARDEN WITH A PRIVATE ACCESS TO THE PARK, SURROUNDED BY LUSH GREEN LANDSCAPED BUFFERS TO PROVIDE OPTIMUM PRIVACY.



LARGE DOUBLE HEIGHT LIVING SPACES OVERLOOKING THE PARK



UNIQUE INTERIOR DESIGN WITH A FEATURE STAIRCASE AND A MODERN APPROACH



SPACIOUS ENTRY EXPERIENCE CONNECTING INTERIORS TO EXTERIORS



MODERN BEDROOMS WITH TIMELESS DESIGN APPROACH



MULTIPLE FIXTURES AND LAVISH MATERIALS AND FINISHES FOR MASTER BATHROOMS

CENTRAL PARK
PLAZA

PENTHOUSES



OFFERING DUPLEX PENTHOUSES WITH PRIVATE ROOFTOP TERRACES, FACING THE BEST VIEWS.



LARGE DOUBLE-HEIGHT SITTING AREAS WITH A SEAMLESS CONNECTION TO THE KITCHEN



SPACIOUS SHOW KITCHEN FACING DINING AREAS TO BRING PEOPLE TOGETHER



PANORAMIC LIFT AND FEATURE STAIRCASE OVERLOOKING THE PARK.



SPACIOUS BEDROOMS WITH HIS & HER CLOSETS



HIS AND HERS CLOSETS WITH CONNECTED BATHROOM EXPERIENCE

CENTRAL PARK
PLAZA

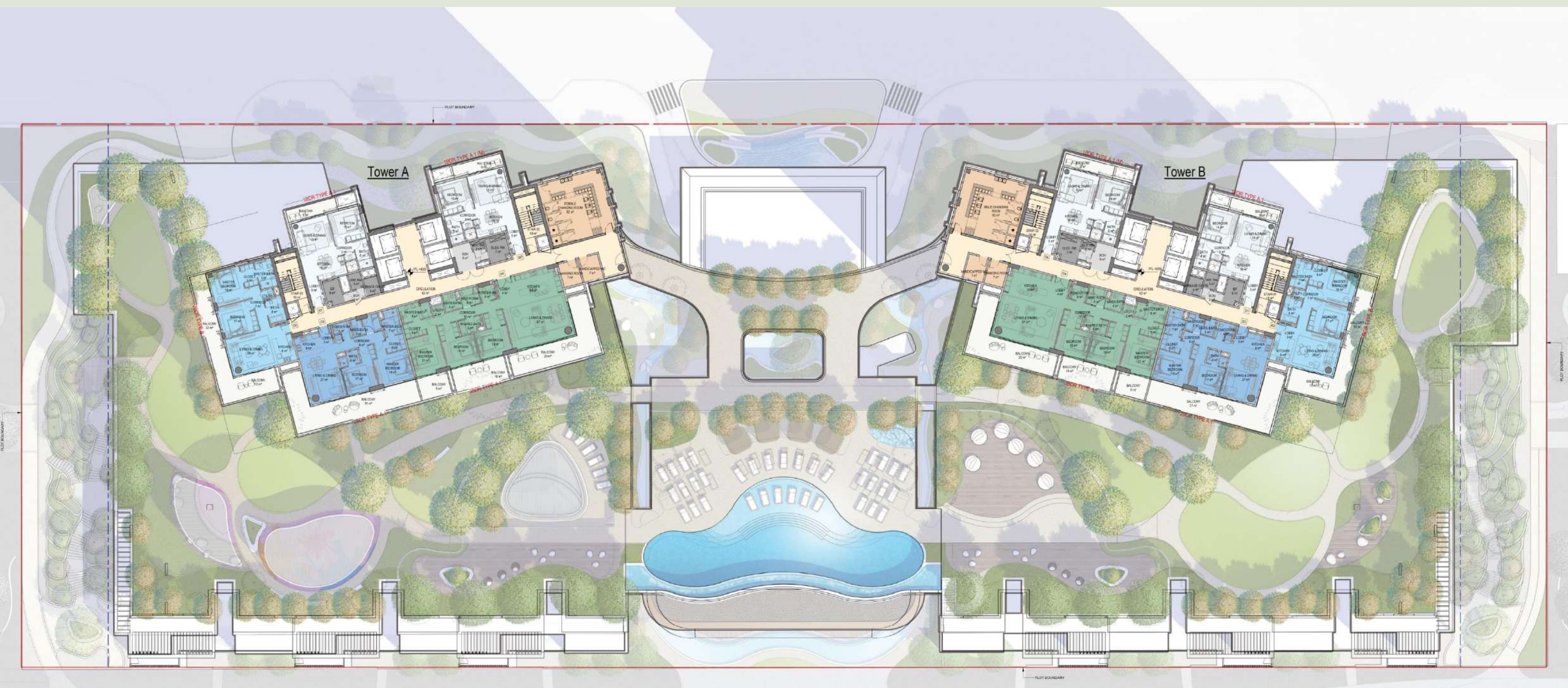
FLOOR PLATES AND UNIT
LAYOUTS

CENTRAL PARK
PLAZA



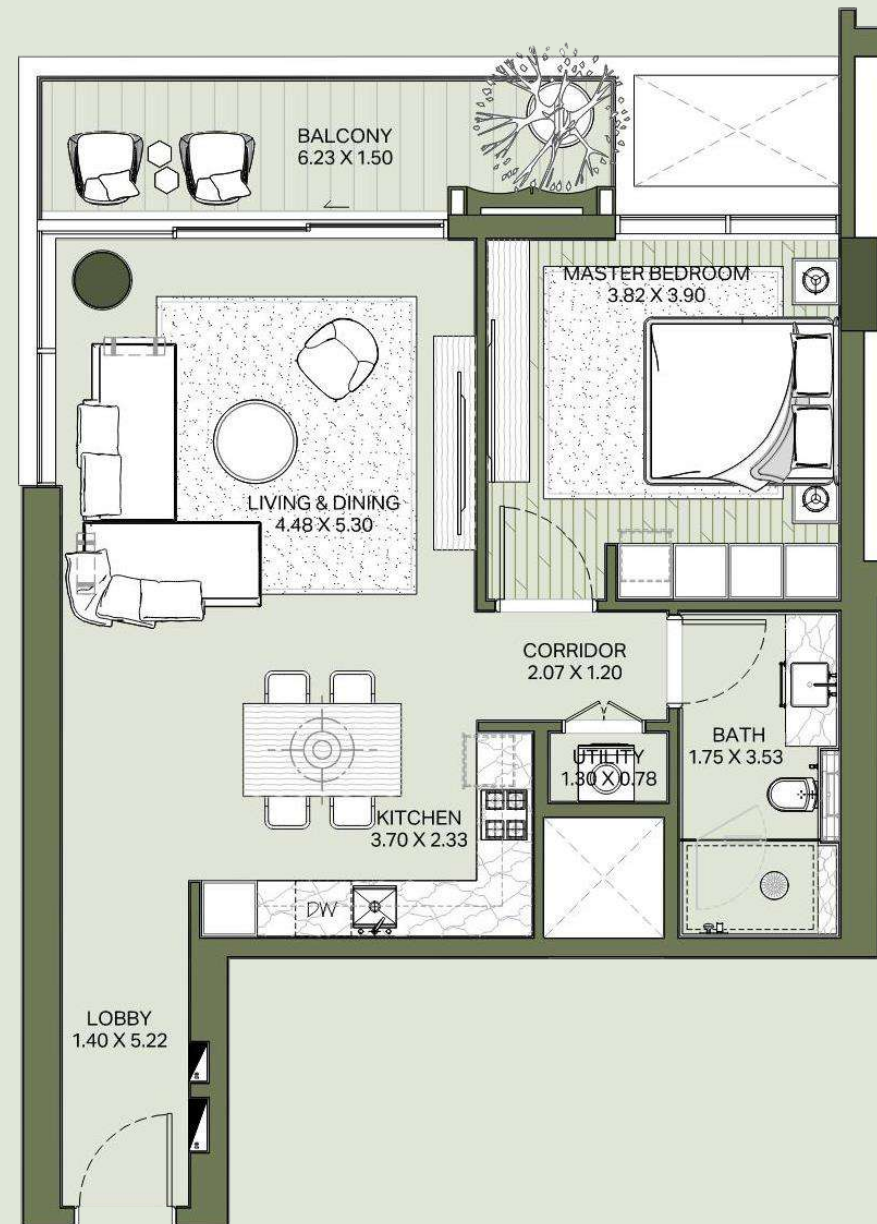
FIRST FLOOR

CENTRAL PARK
PLAZA



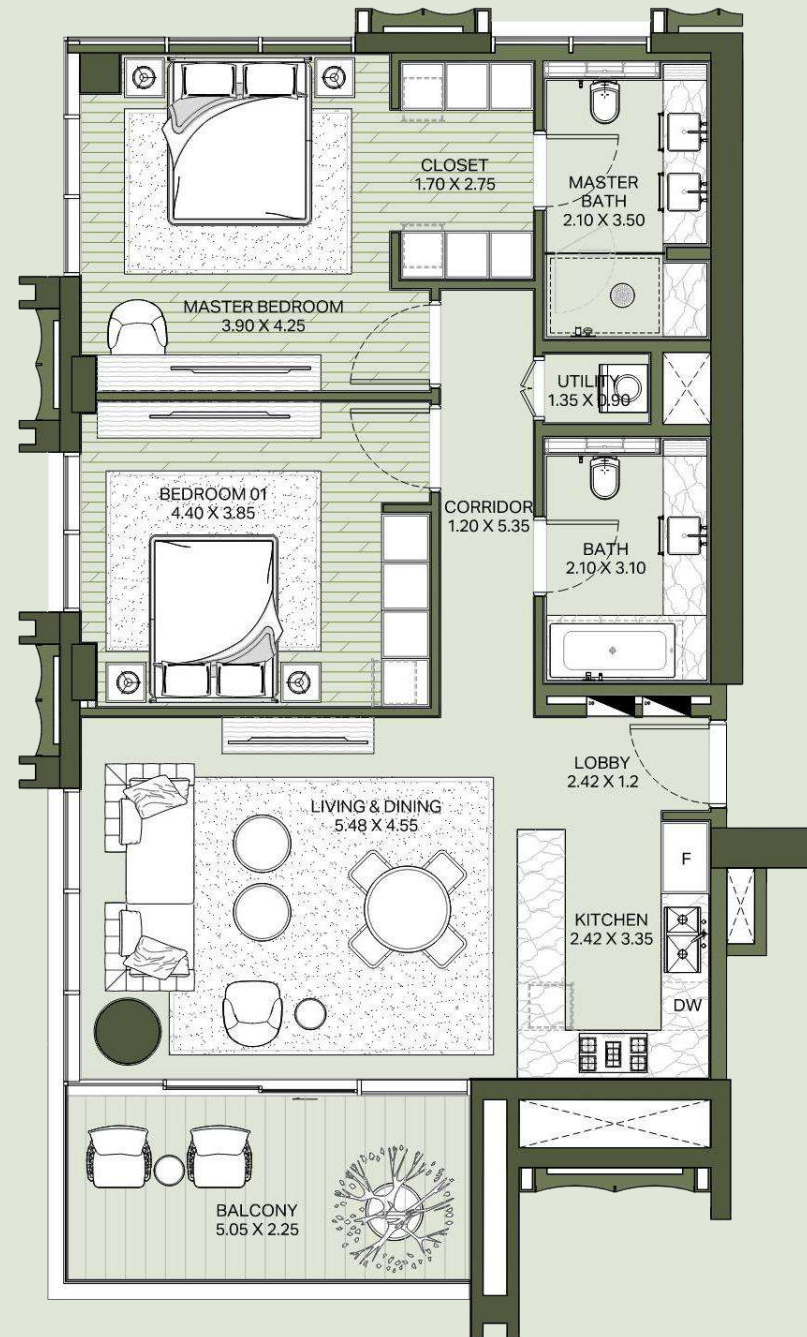
SECOND FLOOR

CENTRAL PARK
PLAZA



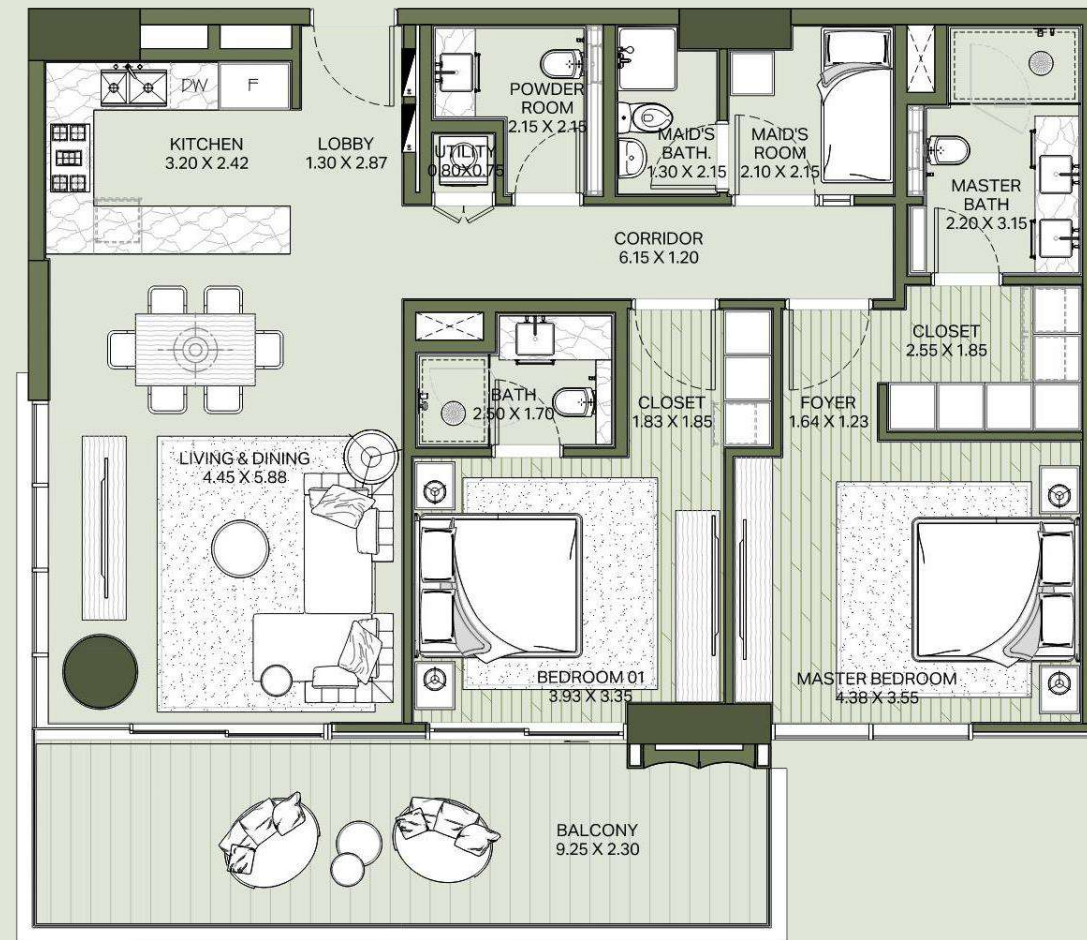
**CENTRAL PARK
PLAZA**
1-BEDROOM TYPE-A

CENTRAL PARK
PLAZA



**CENTRAL PARK
PLAZA**
2-BEDROOM TYPE-B

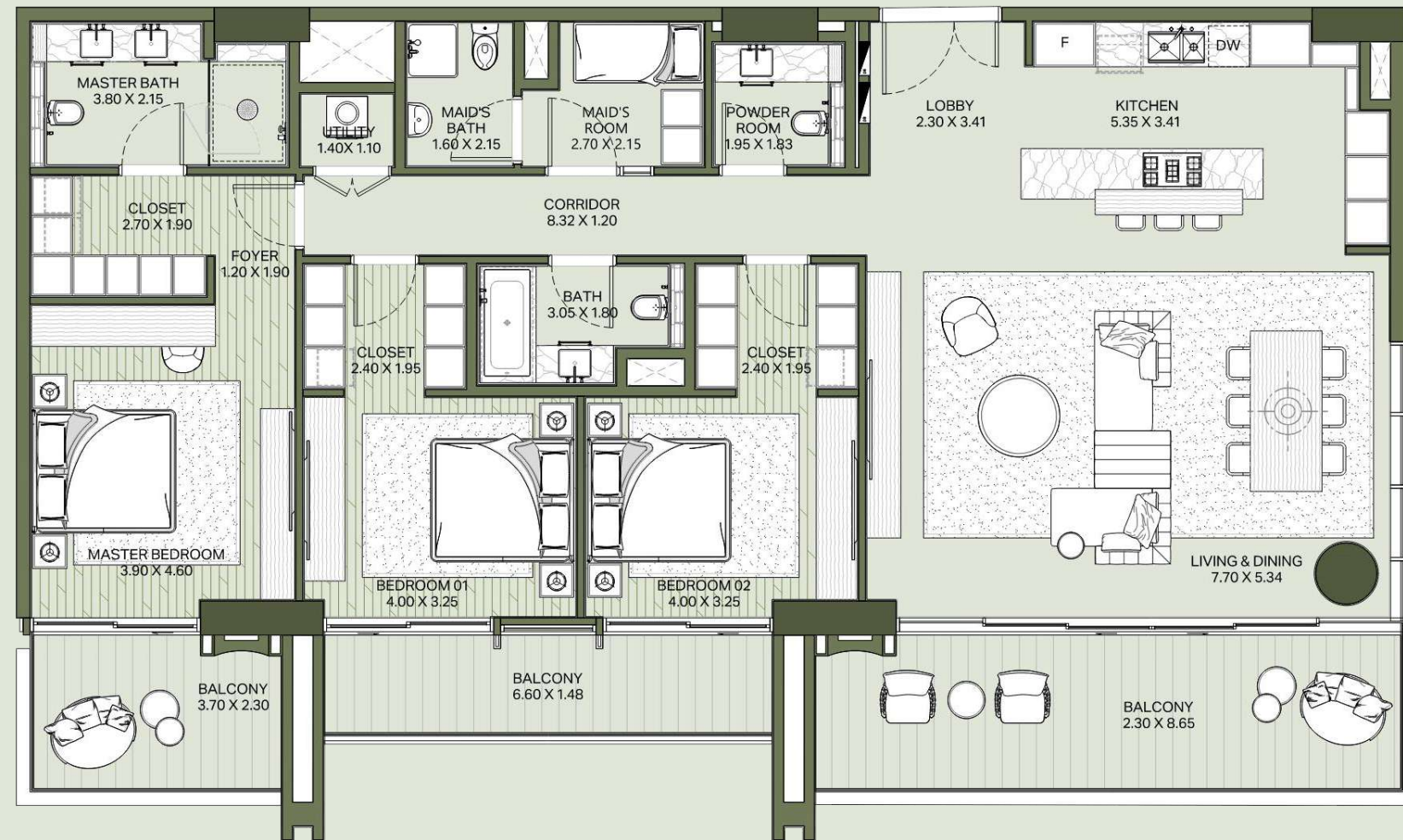
CENTRAL PARK
PLAZA



**CENTRAL PARK
PLAZA**

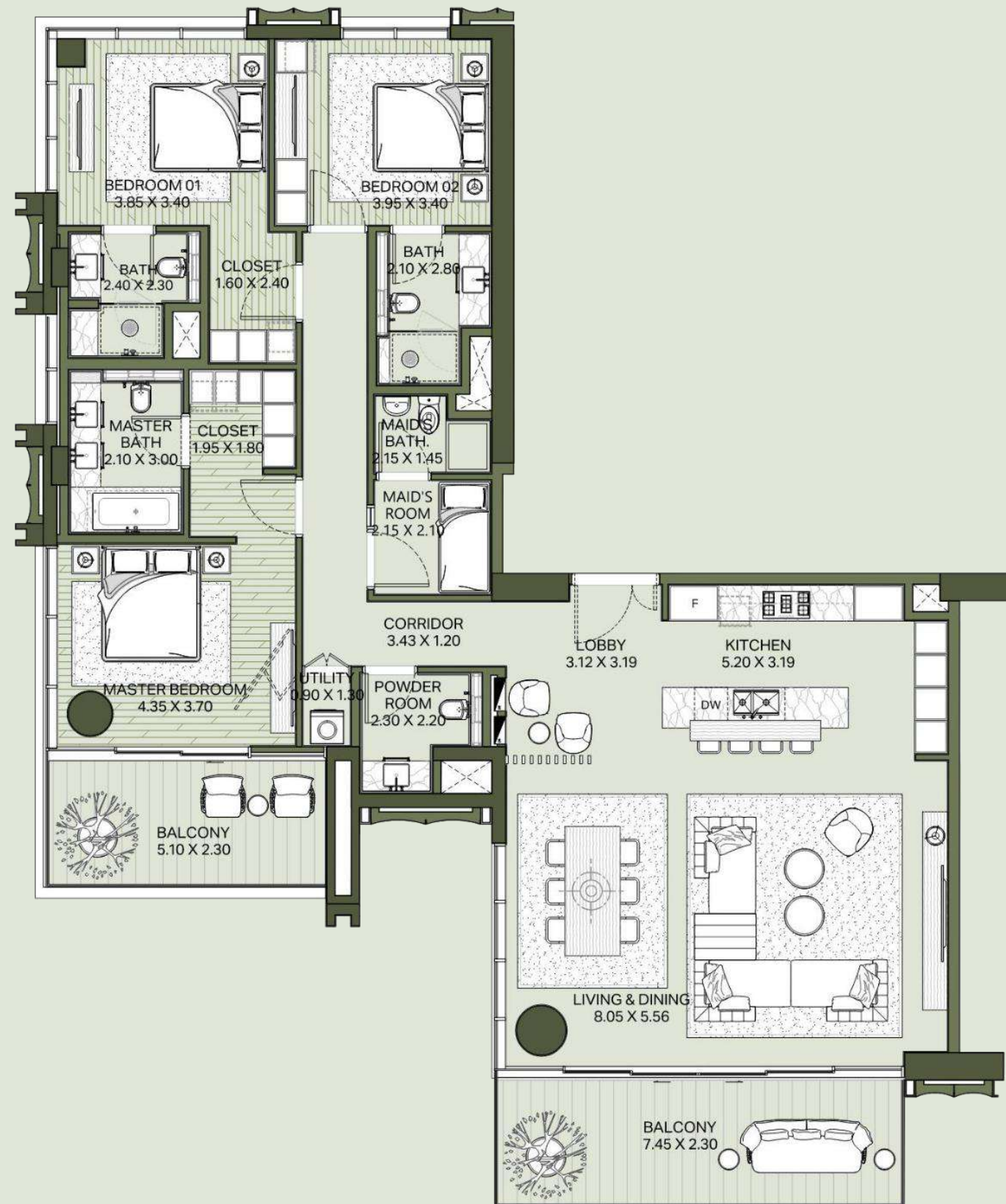
2-BEDROOM TYPE-A

CENTRAL PARK
PLAZA



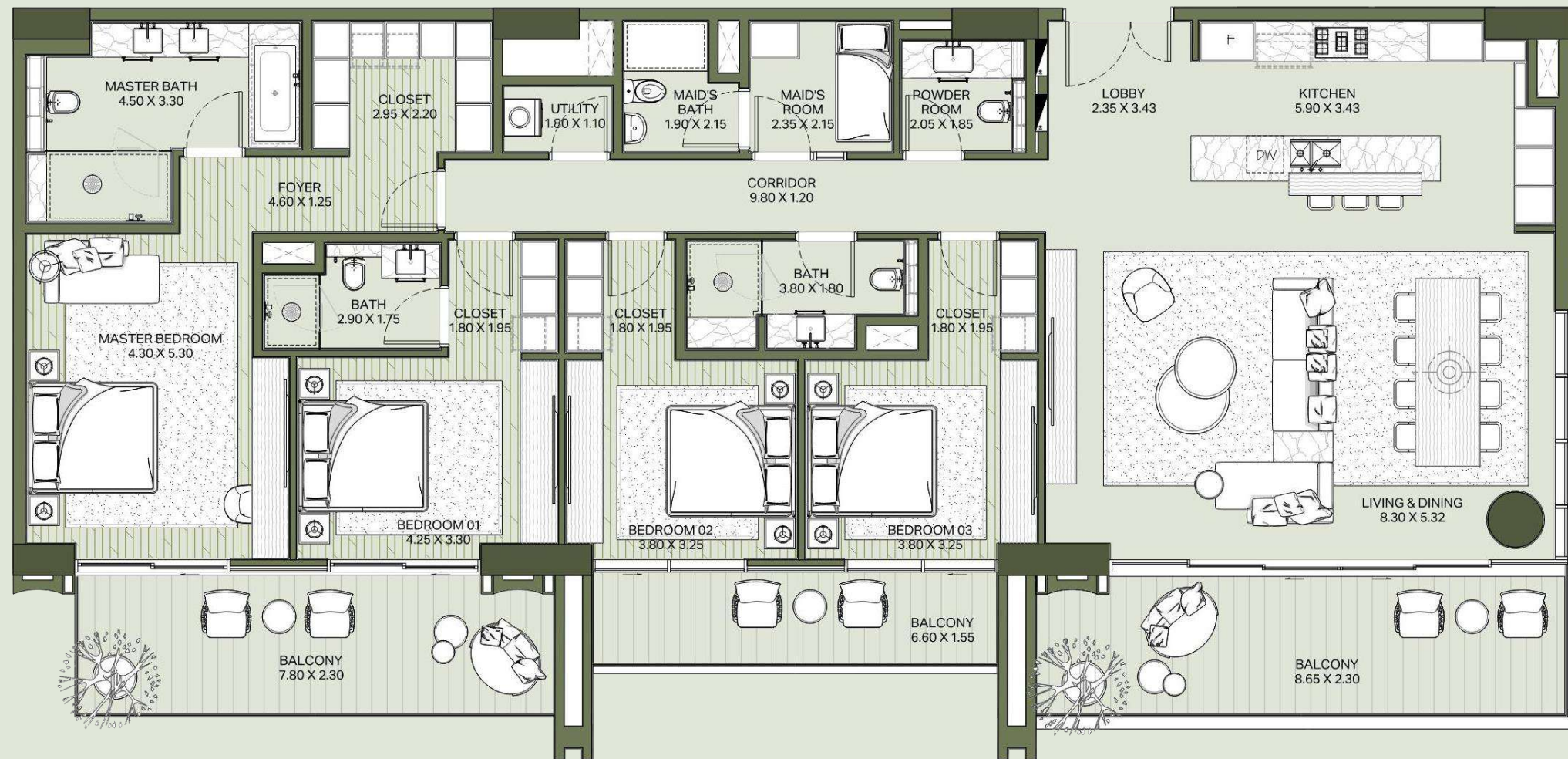
**CENTRAL PARK
PLAZA**
3-BEDROOM TYPE-A

CENTRAL PARK
PLAZA



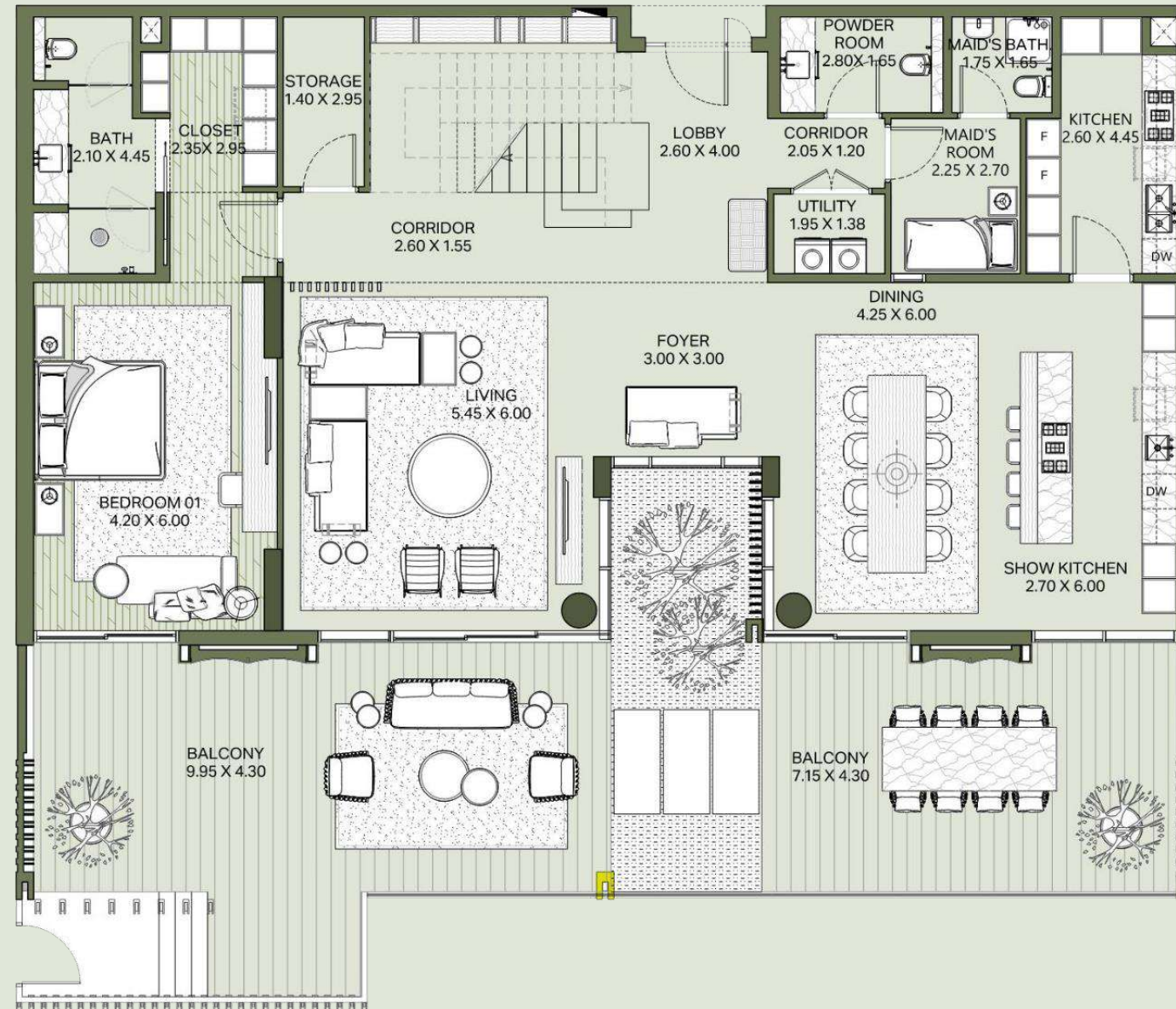
**CENTRAL PARK
PLAZA**
3-BEDROOM TYPE-B

CENTRAL PARK
PLAZA



**CENTRAL PARK
PLAZA**
4-BEDROOM

CENTRAL PARK
PLAZA



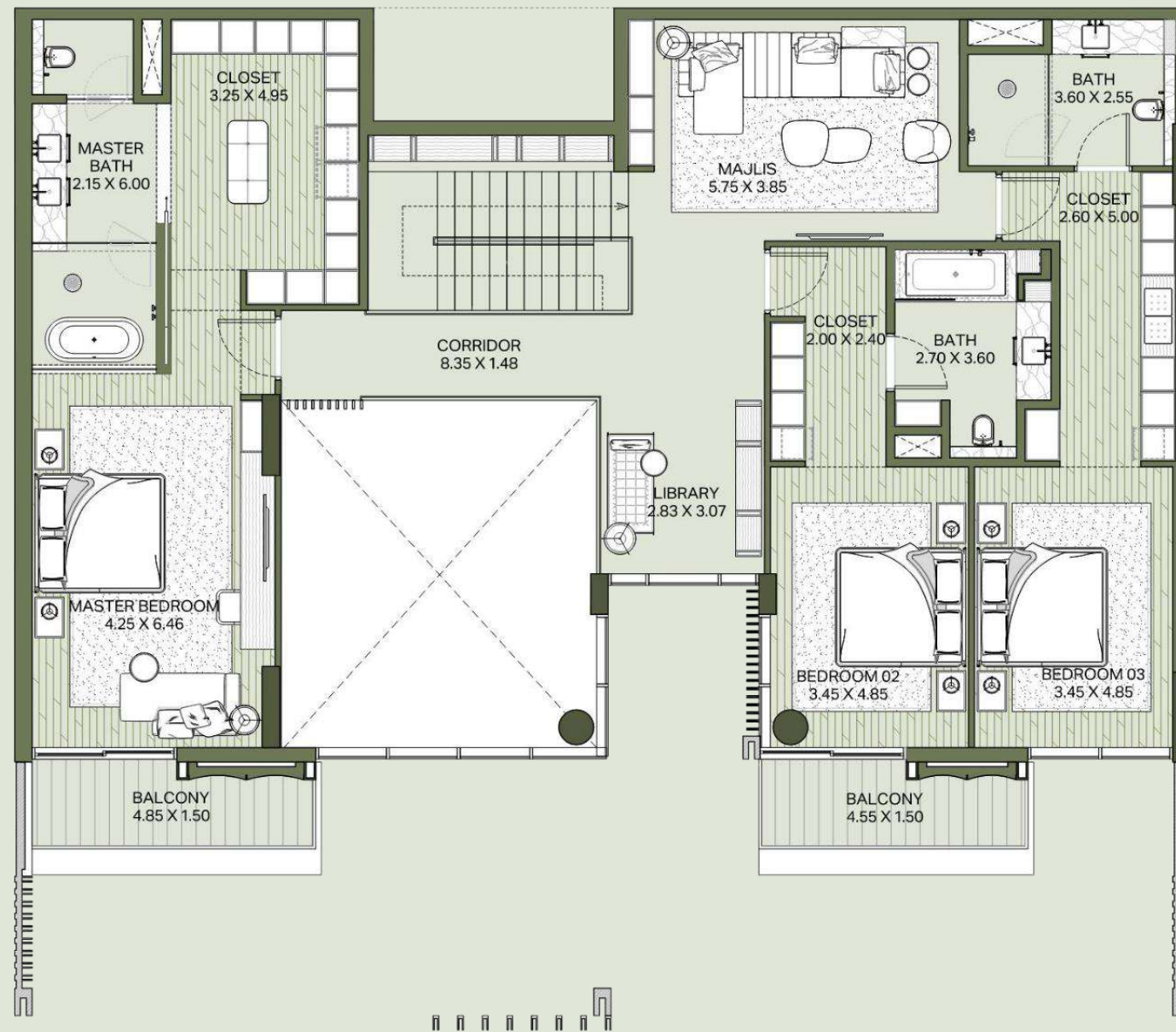
CENTRAL PARK PLAZA

4-BEDROOM

TOWNHOUSE

LOWER FLOOR

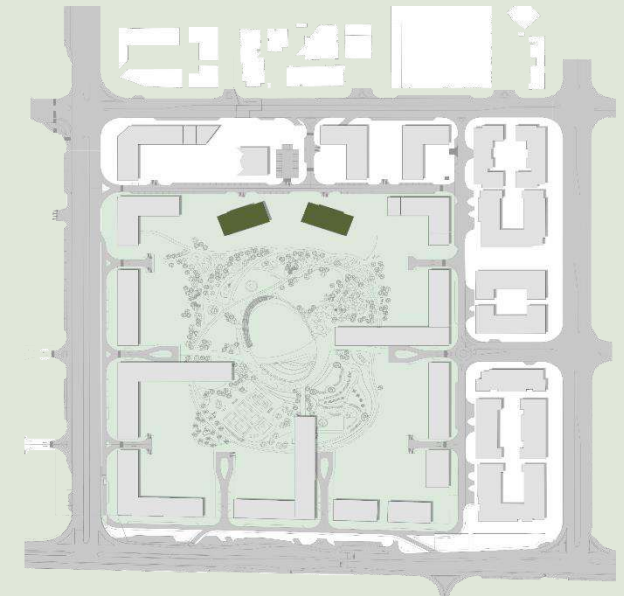
CENTRAL PARK
PLAZA



CENTRAL PARK PLAZA

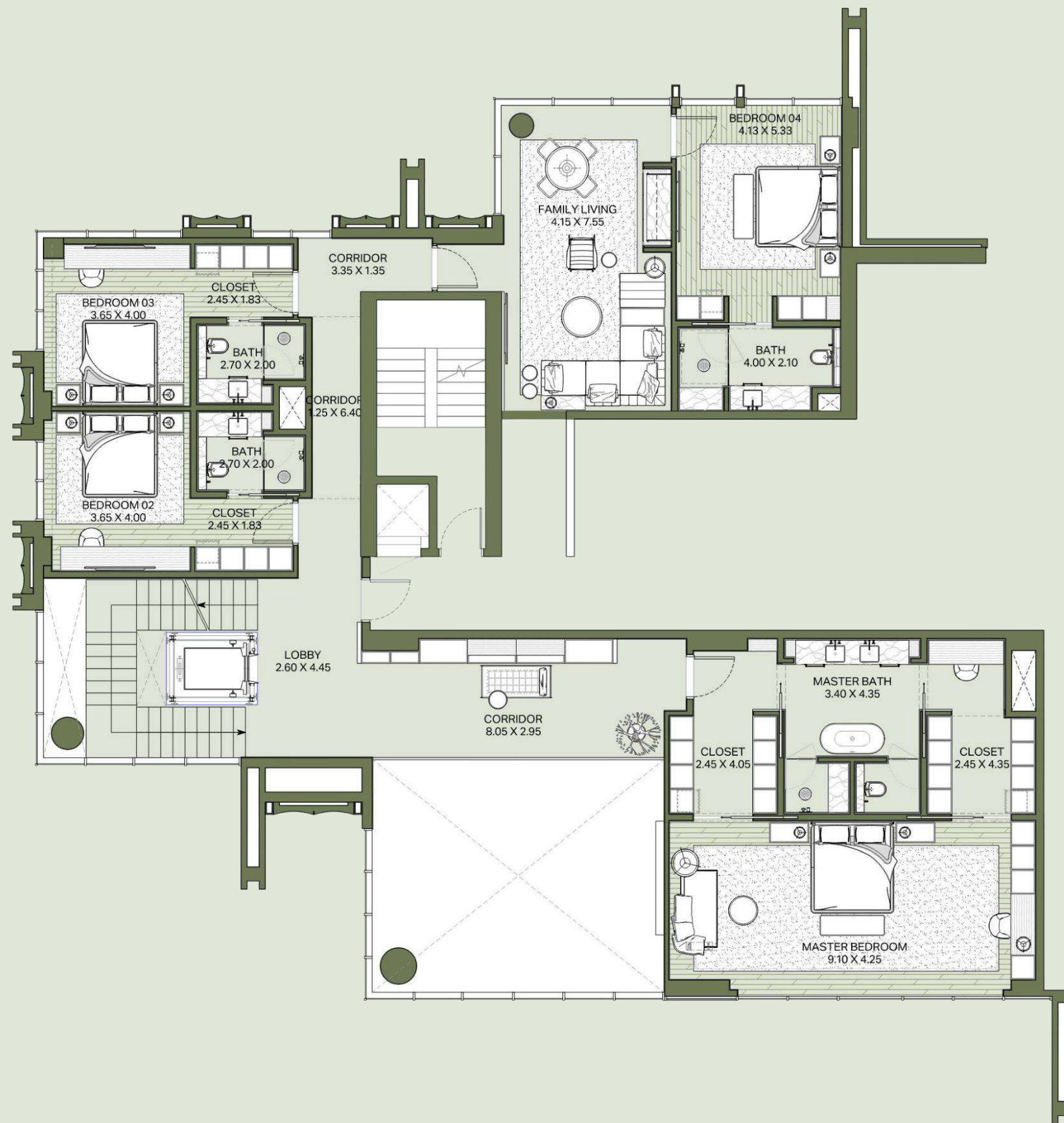
4-BEDROOM
TOWNHOUSE
UPPER FLOOR

CENTRAL PARK
PLAZA



CENTRAL PARK PLAZA
PENTHOUSE TYPE-A
LOWER FLOOR

CENTRAL PARK
PLAZA



CENTRAL PARK PLAZA
PENTHOUSE TYPE-A
UPPER FLOOR

CENTRAL PARK
PLAZA



CENTRAL PARK PLAZA
PENTHOUSE TYPE-A
ROOFTOP TERRACE

BUILDING CHARACTERISTICS

- 2 Towers
- 212 Residential Units
- 1, 2, 3, 4 bedrooms units, 4 Bedroom Townhouses, 5-bedroom Penthouses
- Wide range of indoor Amenities for Residences such as:
 - Grand double height reception area
 - Formal/casual lounge areas.
 - Co-working space and meeting rooms.
 - Adult private lounge and games room.
 - Fully equipped Fitness center with panoramic views of the park.
 - Spa and relaxing facilities.
 - Media Room.
 - Library.
 - Kids play areas.
- Exterior Amenities for Residences such as:
 - Infinity pool with breathtaking views of the park.
 - Lush green spaces.
 - Private outdoor seating.
 - Shaded kids pool and outdoor play area.
 - Direct access to the park through landscaped stepping.

Unit Type	Unit Count	Minimum total area	Maximum total area
1 Bedroom	70	875 Sq.ft	880 Sq.ft
2 Bedroom	91	1,280 Sq.ft	1,870 Sq.ft
3 Bedroom	35	2,235 Sq.ft	2,730 Sq.ft
4 Bedroom	6	2,803 Sq.ft	2,917 Sq.ft
4 Bedroom Townhouse	6	5,755 Sq.ft	
5 Bedroom PH	4	7,210 Sq.ft	9,445 Sq.ft
Total	212		

SALES LAUNCH EVENT

Venue: The Forum – Caesars Palace, Dubai

Date: Thursday, 12th October 2023

Time: 9:00am onwards

PAYMENT PLAN

20%

On Booking

10%

March 2024

10%

September 2024

10%

March 2025

10%

September 2025

10%

March 2026

30%

July 2027

(ON HANDOVER)

PRICES

1 BEDROOM: **Starting from AED 2.73M**

2 BEDROOM: **Starting from AED 3.76M**

3 BEDROOM: **Starting from AED 7.09M**

4 BEDROOM: **Starting from AED 12.43M**

TOWNHOUSE: **Starting from AED 19.50M**

PENTHOUSE: **Starting from AED 31.72M**

ONLINE REGISTRATION PROCESS

After 2 to 3 days, you will receive a notification to register your clients with a few dos and don'ts to keep in mind.

Do's

- Only use the link provided in the registration notification.
- Only register clients with genuine interest.
- Fill out your client's details where it states 'customer' and your personal details where it states 'broker'.
- To avoid delays at the booking stage, please ensure that your client's email address and mobile number are correct, and their name is exactly as it appears on their passport.
- Select the correct agency name.

ONLINE REGISTRATION PROCESS

Don'ts

- Do not register your client before receiving the official registration notification. Registrations received before the official notification will be excluded.
- Do not fill in your email ID in the client's email ID field.
- Do not fill in your mobile number in the client's mobile number field.
- Do not register the same client more than once.
- Do not register inaccurate client names.
- Do not forge, alter or duplicate tokens. This will significantly reduce your chances of obtaining a unit and increase the possibility of being excluded from future launches.

CENTRAL PARK
PLAZA



meraas.com