

# OLIVE FARMS

RAYA JEBEL SIFAH



## TIMELESS LIVING

Olive Farms by Raya is a boutique villa community offering a new concept of flexible living. Each villa is designed as a foundation, giving homeowners the freedom to customize and expand with features that reflect their lifestyle.

Here, your home adapts to you; add a private pool, shaded BBQ pavilion, firepit, solar energy, or bespoke interiors to create a villa that grows with your family.

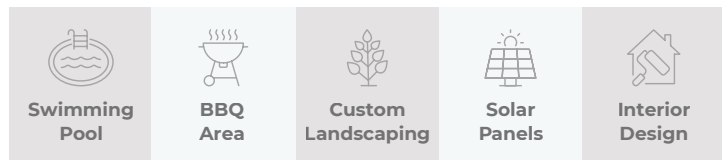
Found in Raya, Jebel Sifah's sanctuary of serenity, Olive Farms combines the peace of nature with direct access to world-class amenities, making it the perfect retreat just steps away from the shore.

## OLIVE FARMS FEATURES

- Villas designed to adapt as your lifestyle evolves
- Expansive private gardens and outdoor living areas
- Seamless flow of natural light across living spaces
- Sustainable, future-ready design choices
- Views of the majestic Al Hajar Mountains as your backdrop

## YOUR VILLA, YOUR CHOICE

### ADD FEATURES THAT REFLECT YOUR LIFESTYLE



## JEBEL SIFAH – THE CAPITAL'S SECRET GETAWAY

Just 35 minutes from Muscat, Jebel Sifah is a coastal destination framed by the Al Hajar Mountains. With a 117-berth marina, PGA-designed golf course, 5.5 km of shoreline, boutique hotels, and leisure amenities, it offers a lifestyle where nature and community meet.



## ABOUT THE DESTINATION

- Just 40 minutes from Muscat
- A 6.2 million sqm master development blending sea, mountains & community
- 117-berth modern marina
- 9-hole PGA Harradine golf course
- 5.5 km of pristine shoreline
- Boutique hotels, cafés & restaurants
- Leisure amenities: beach clubs, kids club, watersports, horse stables & beach camp
- A thriving community with 1,500+ residents from 20+ nationalities



## SELECT THE OLIVE FARM THAT SUITS YOU BEST

■ 1 Bed Farmhouse	■ 2 Bed Farmhouse	■ 3 Bed Farmhouse
<b>Starting:</b> OMR 75,000	<b>Starting:</b> OMR 99,000	<b>Starting:</b> OMR 120,000
<b>BUA:</b> 75 m <sup>2</sup>	<b>BUA:</b> 98 m <sup>2</sup>	<b>BUA:</b> 120 m <sup>2</sup>
<b>Plot Area:</b> 250 m <sup>2</sup>	<b>Plot Area:</b> 280 m <sup>2</sup>	<b>Plot Area:</b> 335 m <sup>2</sup>
<b>Garden Area:</b> 175 - 200 m <sup>2</sup>	<b>Garden Area:</b> 190 - 210 m <sup>2</sup>	<b>Garden Area:</b> 220 - 250 m <sup>2</sup>

## PAYMENT PLAN (3 YEARS)

### Down Payment 10%

3 Months	6 Months	9 Months	12 Months
7.5%	7.5%	7.5%	7.5%
15 Months	18 Months	21 Months	24 Months
7.5%	7.5%	7.5%	7.5%
27 Months	30 Months	33 Months	36 Months
7.5%	7.5%	7.5%	7.5%



by ORASCOM  
DEVELOPMENT



& **UD**

Disclaimer: All information and drawings used in this brochure and its annexes are for illustrative purposes only. The developer reserves the right to make revisions and changes to all drawings, features, and images and in relation to materials, amenities, and dimensions mentioned in this Brochure. Actual areas may vary from the stated areas, and unit direction may vary from unit to unit. All areas are based on gross external areas. Locations and dimensions for the pool and pool deck vary according to land dimensions if applicable. The inclusion of the swimming pool may incur an extra charge.



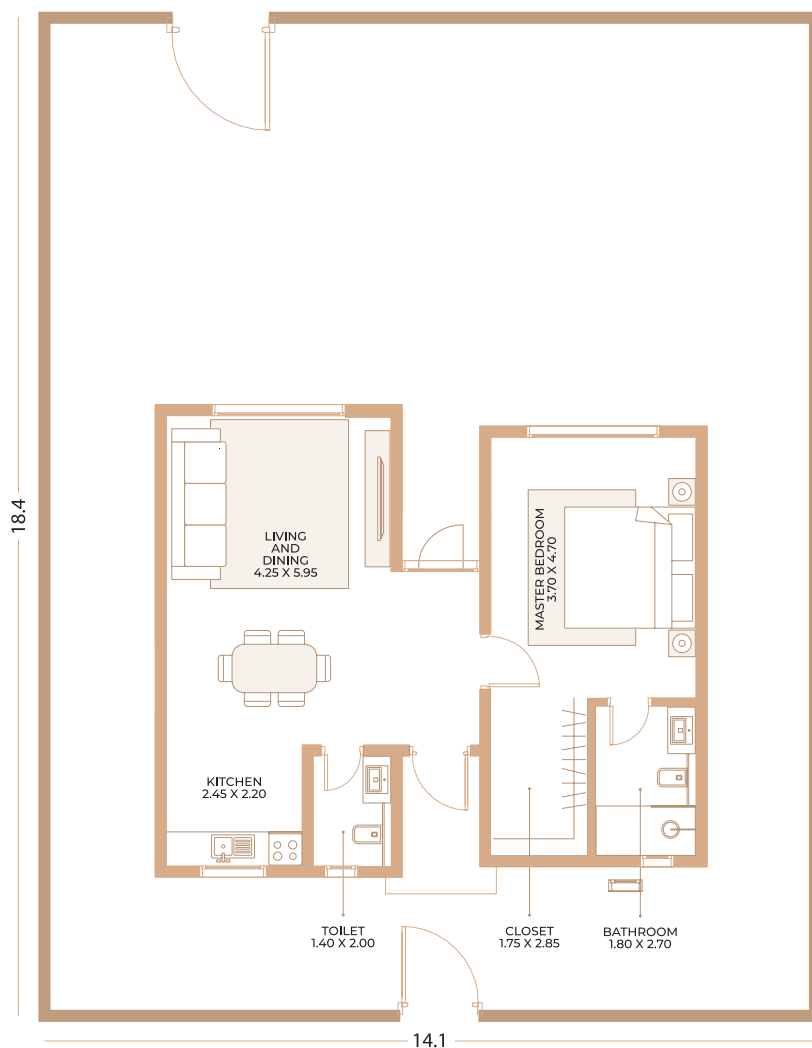
## ONE BEDROOM FARMHOUSE

**Starting Price:**  
OMR 75,000

**BUA**  
75 m<sup>2</sup>

**Plot Area:**  
250 m<sup>2</sup>

**Garden Area:**  
175 - 200 m<sup>2</sup>



**MURIYA**  
مرييا



by ORASCOM  
DEVELOPMENT



& UTHMANIYAH  
DEVELOPMENT

Disclaimer: All information and drawings used in this brochure and its annexes are for illustrative purposes only. The developer reserves the right to make revisions and changes to all drawings, features, and images and in relation to materials, amenities, and dimensions mentioned in this Brochure. Actual areas may vary from the stated areas, and unit direction may vary from unit to unit. All areas are based on gross external areas. Locations and dimensions for the pool and pool deck vary according to land dimensions if applicable. The inclusion of the swimming pool may incur an extra charge.





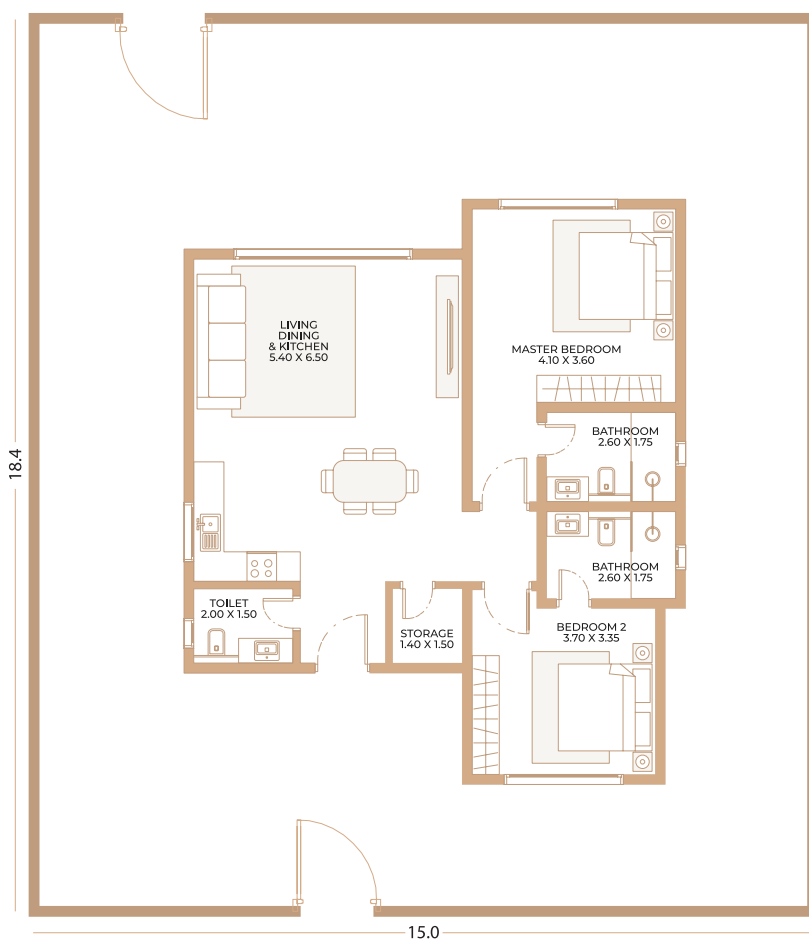
## TWO BEDROOM FARMHOUSE

**Starting Price:**  
OMR 99,000

**BUA**  
98m<sup>2</sup>

**Plot Area:**  
280 m<sup>2</sup>

**Garden Area:**  
190 - 210 m<sup>2</sup>



**MURIYA**  
مرييا



by ORASCOM  
DEVELOPMENT

&



Disclaimer: All information and drawings used in this brochure and its annexes are for illustrative purposes only. The developer reserves the right to make revisions and changes to all drawings, features, and images and in relation to materials, amenities, and dimensions mentioned in this Brochure. Actual areas may vary from the stated areas, and unit direction may vary from unit to unit. All areas are based on gross external areas. Locations and dimensions for the pool and pool deck vary according to land dimensions if applicable. The inclusion of the swimming pool may incur an extra charge.



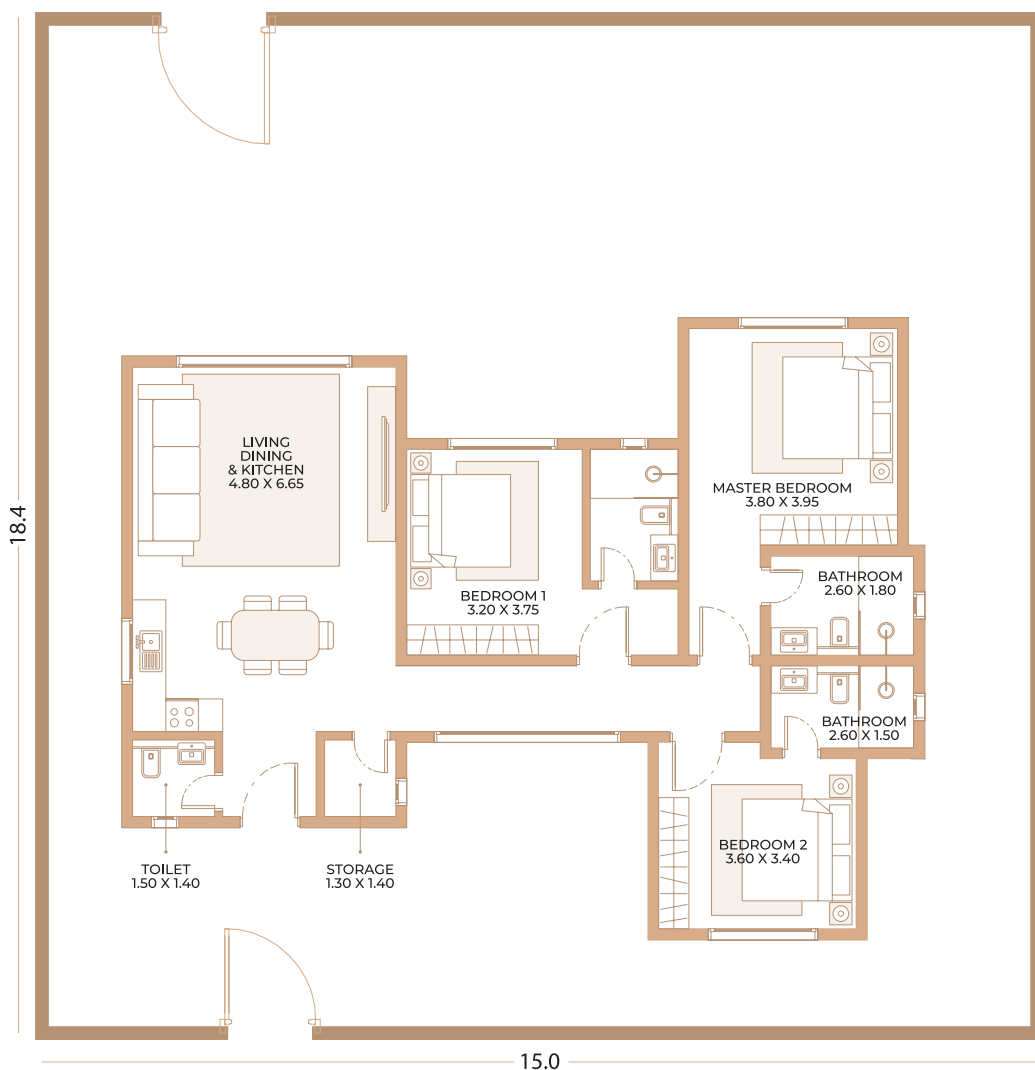
## THREE BEDROOM FARMHOUSE

**Starting Price:**  
OMR 120,000

**BUA**  
120 m<sup>2</sup>

**Plot Area:**  
335 m<sup>2</sup>

**Garden Area:**  
220-250 m<sup>2</sup>



**MURIYA**  
مرييا



by ORASCOM  
DEVELOPMENT



UD

Disclaimer: All information and drawings used in this brochure and its annexes are for illustrative purposes only. The developer reserves the right to make revisions and changes to all drawings, features, and images and in relation to materials, amenities, and dimensions mentioned in this Brochure. Actual areas may vary from the stated areas, and unit direction may vary from unit to unit. All areas are based on gross external areas. Locations and dimensions for the pool and pool deck vary according to land dimensions if applicable. The inclusion of the swimming pool may incur an extra charge.









# OLIVE FARMS

RAYA JEBEL SIFAH



Legend

- 1 Bedroom
- 2 Bedroom
- 3 Bedroom

